

SENCOR®

Let's live!



Phone

Element P503

USER'S MANUAL

EN



**CAUTION:**

THE USER PROPERTIES OF THIS MOBILE PHONE MAY BE AFFECTED BY THE SOFTWARE THAT IS INSTALLED. THIS USER'S MANUAL MAY DESCRIBE FUNCTIONS AVAILABLE ONLY IN DESIGNS DIFFERENT TO YOUR SPECIFIC MODEL.

TABLE OF CONTENTS

1.	Important safety instructions.....	3
1.1	Safety instructions.....	4
1.2	Supplement to LCD.....	7
2.	Getting started.....	8
2.1	Inserting SIM and memory cards.....	8
2.2	Buttons and connectors.....	9
2.3	Turning on the phone.....	10
2.4	Turning off the phone.....	11
2.5	Charging the battery.....	11
2.6	Home screen	12
2.7	Using the touchscreen	15
3.	Using the basic phone functions.....	16
3.1	Entering text.....	16
3.2	Making calls	17
3.3	Contacts	18
3.4	Sending messages	19
3.5	Data connection	20
3.6	Browser	21
3.7	Camera	21

3.8	Connecting to a PC	22
3.9	Alarm, stopwatch, countdown	23
4.	Phone settings	24
4.1	Wireless connections and networks	24
4.2	Device	25
4.3	Personal	26
4.4	System	29
5.	Technical specifications	31

1. Important safety instructions

Attention:

Pay special attention to these instructions. The manufacturer takes no responsibility for a user that does not follow these recommendations or uses the smartphone inappropriately. Through inappropriate use, the user risks breaching respective laws.

Carefully read these operating instructions before use.

Carefully store this information for future use.

- If the phone supports the "Flight mode" function, please set it to the "Flight mode" prior to boarding a plane. If the phone does not support this mode, then turn it off prior to boarding a plane because the phone may cause interference to the plane's electronic equipment. Please follow the instructions provided onboard the plane.
- Turn off the device when in the vicinity of fuel, chemical substances or explosives. Keep the device out of children's reach.
- When using the phone while driving, heed local laws and regulations. When talking on the phone while driving, please adhere to the following rules: Concentrate on driving and be aware of the traffic situation. If your smartphone has a hands-free function, use it. Under unfavourable traffic conditions, please stop the vehicle prior to dialling or picking up a call.
- Turn off your mobile phone in hospitals or in other locations, where phone use is forbidden. The operation of smartphones may have an effect on the functionality of electronic equipment and health devices such as, for example, pacemakers, hearing aids and other medical electronic equipment.
- Warranty repairs do not apply to non-original accessories and components.
- Do not disassemble the phone yourself. If your phone is out of order, please contact your supplier.
- Please do not connect the battery charger to your phone before the battery is installed. Do not short circuit the battery.
- Charge the battery of the smartphone in a well ventilated and cool area and at sufficient distance from flammable and explosive materials.
- To prevent demagnetization, keep your smartphone away from magnetic materials such as discs, credit cards, etc.
- Keep your device dry. Rain, humidity and all other types of liquids may contain minerals, which cause corrosion of electronic circuits. In the event that your device becomes wet, remove the battery and contact your supplier.
- Do not use the smartphone in an environment where the temperature is too high or too low, do not expose the smartphone to strong sunlight or high humidity.
- For cleaning the device, do not use a liquid or damp cloth soaked with a strong cleaning agent.
- This phone takes photographs, records videos and audio; follow all respective laws and regulations relating to the use of these functions. Under certain conditions, taking

photographs, recording videos or audio without permission may violate laws and regulations in force.

- When using the network functions, please do not download files containing viruses, do not install any damaged photographs or dial tones. If downloaded files result in abnormal behaviour of the phone, our company takes no responsibility whatsoever for the given fault.
- Please, dispose of batteries in accordance with local regulations, recycle them if possible. Please, do not throw batteries out with standard communal waste.

1.1 Safety instructions



ATTENTION

Pay special attention to these instructions. The manufacturer takes no responsibility for a user that does not follow these recommendations or uses the smartphone inappropriately. Through inappropriate use, the user risks breaching respective laws.

Carefully read these operating instructions before use. Carefully store this information for future use.

- When using this device, always heed the standard safety instructions to limit the risk of fire, injury by electrical shock or other injuries.
- Please read this user's manual and follow all instructions for use, maintenance and assembly. Do not use the mobile phone for purposes other than those for which it was designed.
- Not following the rules set forth in this user's manual or inappropriate use will void the warranty and may result in injuries or damage to property. In this case, the manufacturer takes no responsibility for any damages whatsoever.
- It is forbidden to use mobile phones in certain places. In the event that mobile phone use is forbidden, turn off the phone according to the instructions in the user's manual. The usual locations where the use of mobile phones is forbidden include: planes, petrol stations, areas where blasting works are being performed, etc. The operation of smartphones may have an effect on the functionality of electronic equipment and health devices such as, for example, pacemakers, hearing aids and other medical electronic equipment.
- Turn off the device when in the vicinity of fuel, chemical substances or explosives. Keep the device out of children's reach.
- Adhere to local regulations governing the use of mobile phones when driving vehicles; as the driver, your primary responsibility is for the given vehicle. If your smartphone has a hands-free function, use it. Under unfavourable traffic conditions, stop the vehicle prior to dialling or picking up a call.
- If the phone supports the "Flight mode" function, please set it to the "Flight mode" prior to boarding a plane. If the phone does not support this mode, then turn it off prior to boarding a plane because the phone may cause interference to the

plane's electronic equipment. Please follow the instructions provided onboard the plane.

- Use primarily original accessories with the phone, as the use of a non-original battery or charger subjects you to the risk of losing the right to a warranty repair, risk of damage to the phone and risk of injury to the user.
- It is forbidden to modify the mobile phone in any way, change the designed properties or to tinker with the device itself. Modifying the device may lead to serious malfunctions and damages to property, potentially it may also cause injury to the user. A modification is considered to also be changes to the operating system software, unless approved by the manufacturer.
- Do not connect the battery charger to your phone before the battery is installed. Do not short circuit the battery.
- Charge the battery of the smartphone in a well ventilated and cool area and at sufficient distance from flammable and explosive materials.
- To prevent demagnetization, keep your smartphone away from magnetic materials such as discs, credit cards, etc.
- Mobile phones are sensitive to external interference, which may seriously affect their function; in certain environments it is not possible to use the mobile phone.
- Neither the mobile phone nor the charger are toys; their use by children presents the risk of small parts being swallowed. The charger and its connection to the mains power grid are very risky for small children; this form of use is forbidden for children.
- Do not disconnect the charger from the power socket by pulling the power cord - it may damage the power cord / power socket, or potentially the charger. Disconnect the charger from the power socket by pulling the body of the charger.
- In the event that the front glass of the phone is damaged, be careful as there is a risk of sharp glass parts, which could result in an injury. Do not use phones damaged in this way, and seek professional repair.
- High volume of the mobile phone may damage hearing with prolonged use, be careful when setting the volume level. Listening to loud music by means of the phone may have serious consequences, be careful when setting the volume level while listening to music.
- Do not use liquid or aerosol cleaning agents, petrol, solvents or other similar substances. Use a lightly dampened cloth for cleaning.
- Do not use the device in the vicinity of water, e.g. in the bath, shower or pool. Submerging the device may lead to injury by electrical shock. Do not place the device into a container filled with water, e.g. a vase.
- Place the device on a stable surface. If your device falls, it can be damaged or injury may result.
- Do not cover the openings on the device. They are used for ventilation and overheating protection.
- Place the device in locations where nobody can step on it.
- Do not place any objects into the openings of the device. This presents a risk of fire or injury by electrical shock. Never permit the device to be sprayed with a liquid.
- To reduce the risk of injury by electrical shock, do not disassemble the device. In the



event that servicing or repairs of the device are necessary, take it to an authorised service centre or to a qualified technician. When it is opened or when the cover is being removed, places with dangerous voltage or other risks may be exposed.

In the event of incorrect reassembly, an injury by electrical shock may ensue upon subsequent use.

- Do not expose the device to extreme temperatures, e.g. in the vicinity of a hot heater or wood stove or in a hot car.
- Do not place burning items on to the device, e.g. candles or cigarettes.
- Do not use the device to report gas leaks when in their vicinity.
- This phone takes photographs, records videos and audio; follow all respective laws and regulations relating to the use of these functions. Under certain conditions, taking photographs, recording videos or audio without permission may violate laws and regulations in force.
- When using the network functions, please, do not download files containing viruses, do not install any damaged photographs or dial tones. If downloaded files result in abnormal behaviour of the phone, our company takes no responsibility whatsoever for the given fault.
- Dispose of batteries in accordance with local regulations, recycle them if possible. Do not throw batteries out with standard communal waste.

**WARNING**

To prevent a fire hazard or injury by electrical shock, do not expose this device to rain or humidity.

DECLARATION:

Our company reserves the right to revise the content of this manual without prior notice.

Notes:

Certain functions of the device and its accessories described in this user's manual depend on the installed software, and the capabilities and configuration of the local network, and may not be available or may be limited by network operators. The provided descriptions may, therefore, not correspond exactly to a specific phone or accessories that you purchased.

The manufacturer takes no responsibility for the quality and legality of any content that you record or download by means of this mobile phone, regardless of whether it is text content, images, music, films, additionally installed copyrighted software, etc. You are responsible for the consequences arising from the installation or use of the aforementioned content on this mobile phone.

All screenshots, symbols and icons in this user's manual are simulated. Reality may be different.

Depending on the installed firmware version, the individual steps may differ from the steps described in this user's manual.

Unless specified otherwise, the description of all steps in this user's manual assumes that you are on the home screen.

The phone is a device, the behaviour of which can be altered by the user by means of additional applications.

For this reason, procedures and individual steps may in reality differ from this user's manual.

Note regarding the operator: The phone is factory set for maximum utilisation of available services. Your phone operator may limit or modify certain functions, security or behaviour of this phone as described in this user's manual. In the event of differences, please seek information from your operator.

1.2 Supplement to LCD

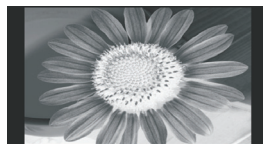
SENCOR[®]

Supplement to the LCD screen's user's manual

Measures to take when a static image is displayed; red/blue/green pixels on the screen

A static image can permanently damage the display part of the LCD screen.

- Do not leave a static image on an LCD screen for longer than 2 hours, because this could damage the screen. This type of damage is known as "screen burn-in".



Damage to the screen resulting from the above mentioned causes is not covered by the warranty!

Red/blue/green/black pixels may appear on the screen

- This is a characteristic feature of liquid crystal displays and does not represent a problem. LCD screens are manufactured using a very precise technology in order to achieve a very fine picture resolution. From time to time several inactive pixels may appear on the screen as a permanently red, blue, green or black pixel (up to 0.001% of the total number of pixels on the screen). This does not in any way affect the features and performance of your television.

2. Getting Started

2.1 Inserting SIM and memory cards

To open the rear cover, hold the phone, push the central part of the rear cover down with your thumb and at the same time pull the rear cover down with your fingers off the body of the phone (ideally in the location of the bottom corner of the phone). Gradually release the cover along the entire perimeter of the phone.

Pull the battery up with your fingernail or a blunt instrument on its bottom edge in the location of the cut-out.

Warning:

before handling cards (SIM and memory cards), first disconnect the charger, turn off the phone and remove the battery.

Insert the **SIM card** into the appropriate slot with the contacts facing downwards so that the SIM card contacts touch the built-in SIM contacts inside the phone. Insert the SIM 1 card into the right slot with the bevelled edge facing downwards; insert SIM 2 card into the left slot with the bevelled edge facing upwards.

Insert the **memory card** into the middle slot between the SIM card contacts facing downwards so that the contacts on the memory card touch the built in memory card contacts inside the phone.

When **inserting the battery** into the phone, first connect the battery contacts with the contacts inside the phone (at the top right) and then gently push the battery downwards into the battery compartment. When putting on the rear cover, place it against the top edge of the phone and gradually, gently push down the edge of the cover, going from the top edge downwards along the entire perimeter of the cover until it slides properly on to the body of the phone along the entire perimeter.

Attention:

phone functions such as voice calls and video calls, receiving and sending text and multimedia messages, and data transmission of various speeds, are only possible and available when at least one SIM card with activated operator functions and within range of a wireless network is inserted. Request information from your operator about available services on your SIM card and the accessibility of the network.

2.2 Buttons and connectors



Charging socket (no. 1 in the picture below) is located at the top of the phone and is used for connecting the USB charging connector. By connecting your phone to a computer, you may take advantage of other available functions (see section Connecting to a computer).

The headphone jack (no. 2) is located at the top of the phone.

A **camera** (no. 3) is located on the front side of the phone, and can be activated as a camera or used when making calls.

The volume button (no. 4) makes it possible to quickly adjust the volume level of the ringtone/notification tone or the receiver while making a call. When the lowest phone ringtone volume level is set, the phone will switch to Vibrations mode.

The **power** button (no. 5) is used for turning the display on/off (press the button), and for opening the quick select screen for ringtone profile selection or for phone shut-down options (long press of the button).

Press the **Back** button (No. 6) to return back by the last performed step depending on the currently active application (this does not apply in the case of confirming a command to remove contacts, uninstall an applications, etc.).

Press the **Home** button (No. 7) to leave the currently running application and to display the home screen. Press and hold the button on the home screen to show a list of recently launched applications. Press the respective application to re-open it. Remove the running application from the list (tap and drag it to the side) to shut it down and free up resources (memory) that it was using.

Press the **Setting** button (No. 8) to show the available options for the currently running application, if available.

2.3 Turning on the phone

If you wish to turn on a turned off phone, hold down the **Power** button for a few seconds until the phone turns on. Then the operating system and other parts of the phone will start loading. Wait until it loads up fully and the home screen or security message (e.g. SIM card lock) appears.

If the phone is turned on without the SIM card being inserted, the phone will show the message **"No SIM card"**. When the SIM card is inserted, the phone automatically checks whether the SIM card is usable. However, even without inserting a working SIM card, it is still possible to connect to Wi-Fi and to login to, for example, a Google account and to use certain functions on the phone.

2.3.1 Turning on the phone for the first time

If you are turning on a new phone for the first time, a "Settings wizard" will guide you through the first start-up and basic settings. The phone settings that you make before the first start-up (language, WiFi networks, etc.) can be changed at any time in the phone Settings.

In the first step, select a language for the phone. The "Settings wizard" will then continue in this language. The wizard consists of several screens, which you may navigate by pressing the buttons at the bottom of the screen "Next"/"Back" or "Skip".

The following messages may appear while the phone is starting up:

- **"Input Phone Lock Code" (Enter the lock code into the phone)** - The phone is locked. Enter the appropriate code for unlocking the phone.

- **Input PIN (Enter the PIN code)** - SIM card is locked. Enter the appropriate code for opening the SIM card and confirm with the "tick" on the keyboard.
- **Searching** - Phone is searching for a network connection.

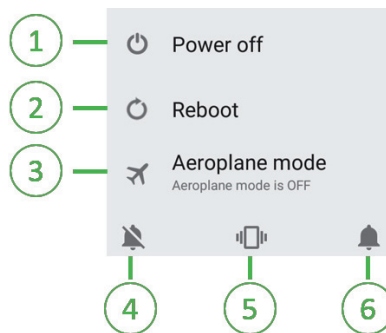
Tip:

short press the Power button to "wake up" the phone when it is turned on but running in the sleep mode to save battery power by turning off the display.

2.4 Turning off the phone

If you wish to turn off the phone, press the **Power** button until an options window appears on the screen. Select the option **Power off** (No. 1 on the picture below) and confirm by pressing **OK**.

After pressing and holding down the **Power** button, you may also select the option **Reboot** phone (No. 2) or activate a selected phone profile: **Aeroplane** (No. 3), **Silent** (No. 4), **Meeting** (No. 5), **General** (No. 6).

**Tip:**

to save battery power, short press the Power button to "put to sleep" a running phone.

2.5 Charging the battery

The charging socket is located on the top edge of the phone above the display. Insert the charger connector into the phone and plug the charger into a power socket. On a turned on phone, the phone charging process will be indicated in the batter icon on the status bar. On a turned off phone, a large charging icon (a battery) will appear briefly.

In the event that the mobile phone is used up until the battery is completely discharged, it may take some time (several minutes) until the charging icon appears on the screen. A phone with a completely flat battery cannot be turned on until the battery is charged to a minimum level that is necessary for starting up the phone.

The phone is equipped with a powerful battery for satisfactory operation in ready mode (Sleep/Standby) as well as operation with a turned on screen and running applications. The battery takes several hours to charge (initially quickly, then slowly in the end) to ensure maximum battery life and utilisation of its capacity. We recommend charging the battery only after the phone first gives a weak battery notification (typically 15 %) and to charge it fully (100 %).

We recommend that the first three charging cycles are performed completely without interruption (charge up to 100 % and discharge through normal use until it turns itself off). In this way, you will achieve improved battery performance for a longer product lifetime. The phone and charger heat up during the charging process, which is normal.

The full battery capacity icon on the screen indicates that the battery is fully charged and to stop charging the phone.

When the charging process is complete, unplug the charger from the power socket and disconnect the connector from the mobile phone.

Attention:

- Charging must be performed in a well ventilated area at an ambient temperature of between -10°C and +45°C. The original charger supplied with the phone must be used. Using a different charger may be dangerous or may result in not achieving the expected performance or may lower, in particular, the lifetime of the battery.
- If the mobile phone turns itself off automatically or the message "Battery is low" appears, you should charge the battery. If the battery was not completely flat before charging, the time until it is fully charged will be shorter.

2.6 Home screen

Note:

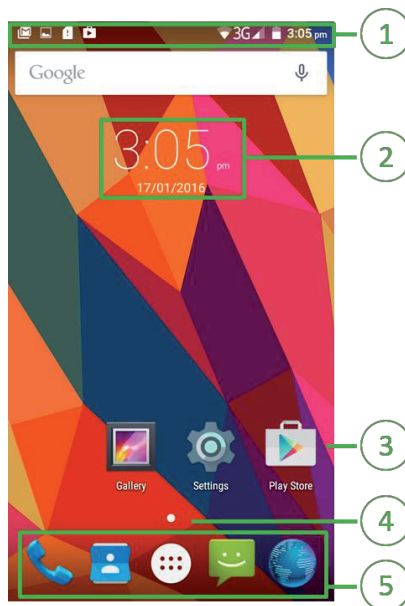
for improved understanding, hereafter we shall call the simple and short touching of the control surface a **tap**, the field for entering a certain value into the system a **button**, the long touch or sliding of a finger along the touchscreen for the purpose of entering a range or moving an object will be called **hold**.

Attention:

do not use force and do not push on the display when using touch controls. If the system response time is not up to your expectations, remove the cause (e.g. moisture on the display, gloves) or wait for a system response in the case where it is busy with another application or activity.

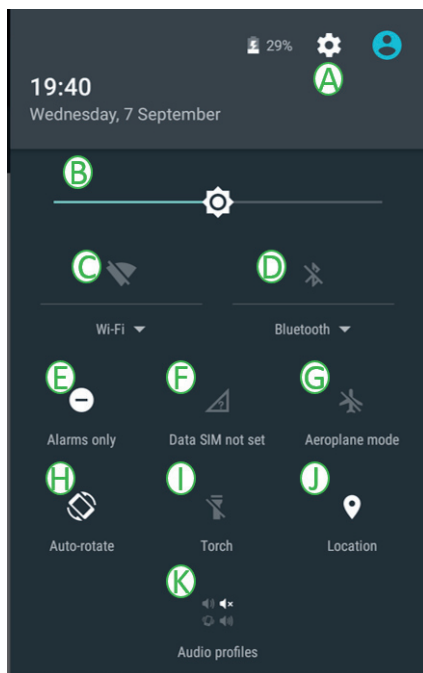
The Status bar (top row on the screen, No. 1 in the picture below) may show, for example, signal strength, battery power level, WiFi network connection, ongoing data transfer, missed call, received message and notifications about installed applications.

The Home screen (default) contains the icons of the most frequently used items. Here you may place your applications, widgets (No. 2), folders or shortcuts (No. 3) to enable their fast start-up. In the event of a large number of items, you may use the wide area of the home screen (the home screen contains several areas, which you navigate by sliding your finger from right to left and vice versa). The graphical indicator on the screen always shows your location on the screen (No. 4). The bottom panel (No. 5) contains icons for starting basic phone functions (e.g. Messages, Contacts). Applications in this panel can be changed as required (see Using the touchscreen – moving icons). In the middle of the bottom panel, there is a white icon for displaying all scroll lists of all phone applications in alphabetical order.



Display the **Information panel** containing information about current application notifications by sliding the status bar downwards. Display the quick select menu by repeatedly pulling down the top panel.

The quick select menu enables quick activation/deactivation of selected phone functions or displaying of detailed information. The quick select menu consists of the following items: settings (A), brightness (B), WiFi (C), Bluetooth (D), transferred data (E), data connection (F), Aeroplane mode (G), screen auto-rotate (H), torch (I), position (J), audio profiles (K).



2.7 Using the touchscreen

Various finger gestures on the screen are used to control the phone menus and to enter commands. **Tap** on the respective icon on the main screen or in a phone menu to launch/open an application, to select a desired item from a list or to perform an action (e.g. Call a contact, Edit, Save). **Drag an icon** to the main screen by touching, holding down and then dragging the icon to a different location. In the phone contact list, when viewing websites or stored images, you may move around by **sliding fingers** on the screen (top down, bottom up or side to side). To zoom in/out of a website or photograph, place your thumb and index finger on the screen and **move them towards or away from each other** to change the image scale. On the phone, you may also set the auto rotate screen function where its orientation will change when you turn the phone to the "landscape" position. Set this function in the Settings – Display menu.

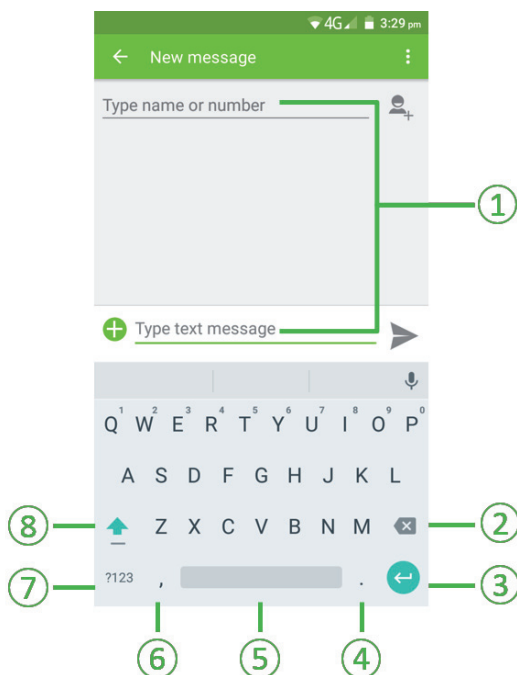
Note:

the high sensitivity of the capacitive touchscreen display may affect the accuracy of entry, and likewise current or personal conditions or inappropriate protective foils. Try it out and learn to control it by means of touch. Always use the phone in a dry environment without gloves or other barriers.

3. Using the basic phone functions

3.1 Entering text

The keyboard automatically appears on the phone screen when it is necessary to enter text or numbers (as a rule when the required application or text entry function is pressed, e.g. the enter SMS message field is pressed, No. 1 in the picture below). The size of the keyboard on the screen can be changed by rotating the phone to "landscape" (when the auto-rotate screen function is enabled).



Hold down and drag to select the character with a diacritical symbol (e.g. letter "š" after pressing, holding and dragging the selection for letter "s") or number (number "2" in the menu for letter "w").

Remove incorrect characters using the **"Backspace"** button (No. 2) on the top right side of the keyboard (left arrow with cross). If you need to delete or enter characters in the higher located text, select the desired location by pressing with your finger, edit as required and then press the location where you wish to continue with the text.

Press the **"Enter"** key (No. 3) to set text to a new row. Press, hold and drag a finger on the emoticon icon to select and enter picture characters.

When the **special character** button (No. 4) is held down, this will display an offer of punctuation characters. **Use the Space bar** (No. 5) to make a space between entered text. To change the keyboard settings, press and hold down button No. 6.

Press key **"123"** (No. 7 in the picture) to switch to a keyboard with special characters and numbers, press "ABC" to switch back to the keyboard with letters. Press the **"Shift"** key (No. 8) to switch to capital letter entry mode. Press and hold to activate capital letters until this key is pressed again.

3.2 Making calls



Starting a call – a call can be made using the Phone application (phone icon). Enter the phone number including prefix into the top row, select a SIM card (unless a default SIM card is set) and press the green phone icon (or select the option "Call"). Call information will be shown during a call. For international calls, press the "O" key until the international call "+" character appears. Enter the country code and the full phone number that you wish to call.

In the event that an incorrect character is entered, use the back arrow with cross to delete it. The entered phone number may also be stored in the contacts list. The required number may also be selected from the stored contacts or from the call history (people and clock icon at the top of the screen of the running Phone application). You may switch between the large keyboard number entry mode and the Phone application functions using the blue keyboard icon (at the bottom of the display of the most frequent and latest call modes) and using the Back button.

During a phone call, you may use respective buttons on the screen to perform actions such as, for example, display the numerical keypad, activate/deactivate speakers, mute the microphone.

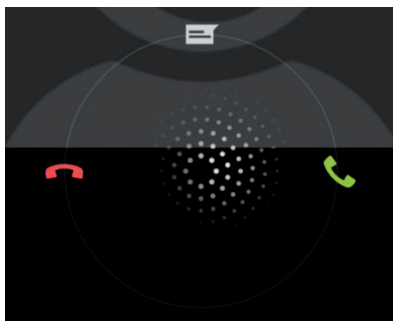
Call history – after starting the Phone application, press the icon at the top of the screen to display a list of previous calls. In this list of all made/missed/rejected calls, the individual types of calls are colour designated (blue arrow – incoming calls, green arrow – outgoing calls, red arrow – missed calls).

Storing contacts from call history – tap to select a record in the recent call history and select the option "Create new contact" or "Add to contact" to save to an already existing record. Choose whether to store the contact on one of the inserted SIM cards, in the phone or another storage location. After entering the details for storing a contact, store by pressing the "tick" in the upper right-hand corner of the screen.

Quick select settings - Press and hold button "1" in the large keyboard phone number dialling mode to dial voice mail if this service is activated (for more information, contact your network provider).

Ending a call - if you wish to end the current call, press the red phone icon on the screen.

Receive/reject an incoming call - When there is an incoming call, press the phone icon on the screen. Further options will appear (see picture below). Hold down the icon and slide it to the right to accept the call. Hold it down and slide it to the left to reject the call. Hold down and slide the icon upwards to reject the call and send the caller a preset message. If a headset is connected, you may also use the button located on the headset to receive the call.



Tip:

The ringtone volume of an incoming call can be lowered by pressing the Volume increase/decrease button.

Emergency call: Regardless of whether there is a SIM card inserted in the phone or not, the phone can call the emergency phone number for help: 112.

3.3 Contacts



You may view the contacts in the phone, create or synchronise contacts with a Gmail account or other applications on the internet or in the phone. In the top menu of the Contacts application, you may switch between contacts marked as favourites and the list of all stored contacts.

Search stored contacts – in the application you may search for a contact by scrolling up/down through the alphabetically ordered list or use the Search function (magnifying glass icon in the top right-hand corner) to enter the start of the name of the searched contact.

Create new contact – in the application, select the add new contact function (icon with a person and a plus sign in the bottom right corner). Then select where the contact is to be stored (e.g. SIM card, phone), enter the name of the contact, phone number, and any additional information. Store the created contact by pressing the "tick" in the upper right-hand corner of the screen.

Attention:

The stored information options for contacts differs depending on the selected type of storage.

Import/export contacts – in the application, press the navigation key "Settings", select Import/Export. In the first step, select from where the contacts will be selected, in the next step, select where the copied contacts will be stored. Subsequently, you may mark only selected contacts or use mass selection of all available contacts (at the top of the screen, in the number of selected contacts indicator). Press the OK key to confirm your selection and start importing/exporting contacts.

3.4 Sending messages



In the messages overview, you will find all received, sent and draft SMS and MMS messages automatically arranged into individual conversations. Upon receiving a new message, the given conversation thread is highlighted by a bold font until the conversation is opened.

Writing new messages – in the top right-hand corner of the conversation overview screen, press the message icon with the "plus" sign. You will be asked to enter the phone number or the name of the person stored in the contacts list. After entering several characters (e.g. initial letters of a stored name) you may select the contact from the offered overview of all contacts corresponding to the pre-filled-in characters. Select the desired contact by tapping on it. In the next step, tap the text message entry field (at the bottom of the screen) and enter the text of the SMS or MMS message. Press the "arrow" in the bottom right corner of the screen located near the entered text to send the message.

Tip:

when in the text writing mode, you may attach a video, photograph, sound or contact to your message by means of the "paper clip" icon at the top of the display. By attaching such a file, the SMS message will automatically change to an MMS message, which may be charged a different fee. For more information, please contact your network provider.

Removing messages – in the overview of all messages, press and hold a selected conversation to activate a remove message menu. Tap to mark all conversations that you wish to delete and confirm their deletion using the waste bin icon in the top right-hand corner of the screen.

Message settings – message settings are available in a menu after pressing the "Settings" navigation key on the all conversations screen. In item "Settings" it is possible to edit the SMS/MMS message settings (e.g. delivery notification, type of storage), message notification (e.g. ringtone, vibrations), general settings (e.g. conversation wallpaper, message font size, CB messages).

Calling from a message – if the message contains multiple numbers, the phone may be automatically activated to the number selection menu from the message. Press the call button (phone icon on the screen) to dial the required number.

3.5 Data connection

Your phone enables an internet connection via GPRS, EDGE, 3G, LTE and WiFi. Activation/deactivation of data transmission can be setup in the phone settings (see chapter Phone settings – Wireless connections and networks) or in the quick select menu. Ongoing data transfer will be indicated in the status bar on the SIM card signal icon / WiFi icon with small arrows.

Note:

Network services will be automatically configured, when the phone is turned on for the first time with the inserted SIM card. Should problems arise, please contact your network provider. The phone automatically switches between faster and slower services depending on current availability and mobile network status. Faster transmissions require a stronger signal than slower transmissions.

Attention:

A fee is charged for data transmissions in the mobile operator's network. This also includes background transmissions, e.g. when multimedia attachments are transmitted. Request information from your operator about the range of services and pricing.

3.6 Browser



The phone has a pre-installed basic browser. This browser may not be able to display all types of websites correctly. For the Browser to function properly, you must have an active data connection.

Press the browser icon to launch the application. The address entry field is located at the top of the screen. When moving around the screen, the bottom bar of the screen shows a quick function menu (shown on the picture below, from left to right in the following order: Back, Forward, List of opened tabs, Bookmarks/History).



To display a selected website, press the address entry field of the browser and use the keyboard to enter the address of the website. Confirm your selection by pressing the Go button (white arrow in green circle icon), located at the bottom right of the keyboard.

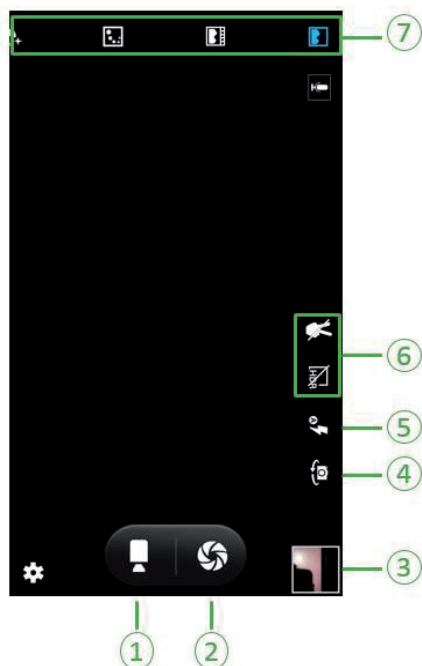
3.7 Camera



To zoom in/out, place your thumb and index finger on the screen (moving them towards or away from each other will change the image scale). Tapping the required location in the preview mode to take a shot activates auto-focus on the location that was tapped (once focused, the viewer colour changes to green). Take the shot by pressing the volume button on the side of the phone or the Take shot icon on the screen (No. 2 on the picture below).

The **camera** shaped icon (No. 1) serves to toggle to the video recording mode (recording starts immediately – you may stop and save it by repeatedly pressing the camera icon, apart from the option to toggle back to the photograph camera). The taken photographs/videos can be immediately displayed by pressing the preview (No. 3). The Camera application (and similarly also the Gallery viewing application) stores photos and recordings in memory preset for storage (Settings/Storage) by the user, or in the phone's internal memory, or on to an inserted memory card.

At the camera home screen you can, for example, toggle between the front and rear camera (No. 4), take a photograph or make a video recording, activate/deactivate the flash (No. 5) and use special photography modes (No. 6 and 7).



3.8 Connecting to a PC

Connect a USB cable to a computer and your phone. Wait until your computer's operating system installs the necessary drivers for communicating with the phone. Open the information panel menu on the phone's home screen and select the option "Connected as...". You can select one of the offered options (e.g. USB storage for transferring files).

Attention:

Connection of the phone to a computer is supported by Microsoft operating systems Windows 7 and higher.

Note:

While there is a software connection of the internal memory or memory card to the computer system, this memory will not be accessible to the phone. It will not be possible to use certain mobile phone applications, e.g. camera. After disconnecting from the computer, the phone will renew access to this memory.

3.9 Alarm, stopwatch, countdown

Setting the alarm clock - In the Clock application under the alarm tab (top left icon) press the "plus" icon and drag your finger along the dial to set the desired time. In the next step, you can activate/deactivate the set alarm (by pressing the toggle button located on the right of the set alarm time), select repetition for individual days of the week, select a ringtone for the alarm and enable/disable vibrations during an alarm.

Tip:

In the Clock application you can also see an overview of the current time in set cities, a countdown function or a stopwatch (following the top icons behind the alarm icon at the top of the screen from left to right).



4. Phone settings



The options for phone settings are separated into several sections. At the top of the display you can use an icon to toggle between a simplified general menu ("General") and displaying all the available items ("All"), which are categorised into individual subcategories for improved orientation. The most frequently used settings for your phone are described below.

4.1 Wireless connections and networks

WiFi – the icon for enabling/disabling a WiFi connection is located on the top right. When a WiFi connection is activated, a list of the available networks is shown once all are loaded and identified. To activate a new connection, tap on the selected WiFi network and enter the password if required. If problems occur, please contact the administrator of the WiFi network to which you are unable to connect.

Turbo download – icon for enabling/disabling the simultaneous downloading option using WiFi and 4G/3G network connections is located at the top right.

Bluetooth – the icon for enabling/disabling a Bluetooth connection is located at the top right. When activated, the phone will perform a scan and attempt to identify devices that are set as Visible. To activate a new connection, tap on the selected device and enter the pairing code if required.

SIM cards – serves to set the settings for SIM cards available in the phone. For making voice calls, sending SMS messages and data connections you may permanently set an appropriate SIM card (default SIM) or use the option "always ask" and to arbitrarily change the SIM card every time a call is dialled, a messages is sent or a data connection is made. It is possible to select a default service for the selected SIM card, it can be disabled or enabled, and setting options for their easy recognition in the case that two SIM cards are used in the phone.

Data usage – this function serves to provide information about the history of the number of data transfers and an overview of the utilisation of data volumes by individual applications installed on the phone in the selected period as calculated by the phone. Master systems may, however, also count certain service related transfers that are not accessible in the phone itself.

Other...

- **Flight mode** - here you can enable/disable the Flight mode (the phone is not logged into the network of the operator and data transfers do not function, other applications can be used)

- **Tethering and portable hotspots** – with this function, you can create your own WiFi/Bluetooth hotspot and share a data connection with those nearby. In this mode, the phone changes roles from being a user (client) to the role of a provider (of WiFi/BT). To resume the role of a client, it is necessary to disable tethering.
- **Mobile networks** – enables automatic or manual scanning of mobile networks for individual operators, setting of data services (in the event of difficulties, please contact your mobile network provider), network mode setting option. (TIP: for a longer phone battery-powered stand-by time, use the 2G network)

4.2 Device

Display – serves to adjust settings for wallpaper, brightness, auto-rotate screen, sleep mode, screensaver and font size.

Gesture settings – enables the activation of selected phone functions that are available when the phone display is lit. These functions are not active in the sleep mode.

The item "Gesture Motion" enables the following functions to be set:

- Gallery – option to enable/disable scrolling to the next picture in the picture gallery by moving the palm over the phone display
- Music – option to enable/disable scrolling to the next audio track in the Music application by moving the palm over the phone display
- FM Radio – option to enable/disable scrolling to the next radio station in the FM Radio application by moving the palm over the phone display
- Video – option to enable/disable scrolling to the next video in the Video application by moving the palm over the phone display

"Smart Motion" offers the activation of the following functions:

- Action unlock – option to unlock the phone by moving the palm over the phone display. If there is no gesture or PIN lock set on the phone, then it is not possible to use this function. You will always be asked to enter the safety gesture, PIN or password
- Smart answer – option to pick up an incoming call by placing the phone against one's ear
- Answer by swing – option to pick up an incoming call by fast movement of the phone
- Smart switch – turn off a loud speaker when the phone is brought close to the ear
- Smart call – dial a selected phone contact by placing the phone against one's ear
- Flip Mute – mute the phone by turning the screen downwards

"Gesture Wake" offers the activation of the following functions when the display is turned off:

- Double click - display home screen when an unlit phone screen is double-clicked
- Up - unlock phone when finger is dragged upwards
- Down - start application Phone when finger is dragged downwards

- Left – go to previous audio track during playback in the Music application after dragging finger to the left
- Right – go to next audio track during playback in the Music application after dragging finger to the right
- c, e, m, o, s, v, w, z - launch selected application after drawing a given character (letter)

Sound and notification – item offers the option to add a new sound profile using the Settings navigation key; select a sound profile or edit the General ringtone profile settings

Application – displays a list of applications installed on the phone. Tapping on the selected application will show details about the application including the option to uninstall/remove the application from the phone. Preset applications cannot be uninstalled.

Storage and USB – the default memory for storage can be set (memory of the phone or SD card), show an overview of memory use, use the safe SD card removal function or delete memory card function if a memory card is inserted in the phone. Data deleted from a memory card cannot be undeleted.

Attention:

The total shown storage capacity of the phone is also used for system resources and therefore it cannot be fully utilised. When updating applications, ensure that there is sufficient space available in the internal memory. It is recommended to install your own applications on external storage. Images and video recorded by the camera are always stored in the phone's memory.

Battery – shows an overview of individual applications and their share of battery use

Power saving mode – shows battery power level, history and offers power saving options ("Super mode" for reducing the performance of the phone, "Extreme mode" for limiting all applications except for calling, SMS and the clock)

Memory – shows the utilisation of memory over a selected time interval

4.3 Personal

Position – certain applications require identification of the phone's position for them to function correctly or even activated GPS reception (e.g. Maps, Navigation). The enable/disable icon is located on the top right. The location mode offers the option to set the location information collection mode.

Tip:

In the location mode, select the option "device only", a fee may be charged by the operator for other modes – request information from your operator. For reading the position from the GPS satellite system, it is, nevertheless, necessary to have an unimpeded view of the sky and the position identification takes some time.

Security – offers option to manage the security of SIM cards by means of PIN codes (basic information is provide in chapter SIM card security; for more information, please contact your mobile network provider), phone encryption security. It is also possible to set Device (application) managers, permission for installation of applications from unknown sources, installation of suspicious files and modification of rights of applications to use certain phone functions.

TIP: By filling in the item "Locked screen report", it is then possible to display the owner's contact details on a locked phone screen in the event that your phone is lost.

One-handed operation – enables the activation of the option to toggle the position of the large keyboard for dialling numbers in the Phone application between the right and left side of the screen (by means of an arrow icon) for easier one-handed operation.

Accounts - the phone supports simultaneous connection to several different email accounts using protocols IMAP, POP3 and/or Exchange in the case of a company email account (more information in separate chapter Accounts). Please contact the administrator of your email server for correct setup of your email account.

Language and input – here you can change the phone's language, keyboard and text input methods.

Backup and data reset – the function "factory data reset" will restore the phone's default factory settings and irretrievably delete all data stored on the phone (e.g. music, contacts, photographs).

Tip:

Before launching this function, back up all the data on the phone on to an external device away from the phone where the reset to factory settings is performed.

Google – enables the setting of Google services and related applications.

4.3.1 SIM card security

The SIM card as an expressly personal communications tool is thoroughly secured against misuse. The most typical procedures of the operators are below: Carefully read the operator's documentation for your SIM card.

PIN code on the SIM card:

The PIN code (personal identification number, 4 -8 digits) is used to prevent unauthorised use of your SIM card. If the PIN verification function is activated, the PIN code will be requested whenever the phone is turned on. If the PIN code is entered incorrectly three times, the SIM card will be blocked.

The following instructions will describe how to unlock the card:

- 1) To unlock the SIM card, enter the correct PUK code into the row on the screen.
- 2) Then enter a new PIN code and confirm.
- 3) If requested to re-enter the new PIN code, enter the PIN code again and confirm.
- 4) If the PUK code is correct, the SIM card will be unlocked and the new PIN code will be activated.

Attention:

If the PIN code is entered incorrectly three times, the SIM card will be locked automatically. In this case, it is necessary to use the PUK code to unblock the card. The PUK code is kept by the network operator.

PUK code:

PUK code (PIN unblock code, 8 digits) is used for unblocking a SIM card with an incorrectly entered PIN code. The PUK code is provided by the phone operator together with the SIM card. In the event that the PUK code was entered incorrectly ten times in a row, the SIM card will be invalidated. Request a new SIM card from your phone operator.

PIN2 code:

PIN2 code (4 - 8 digits) is used together with the SIM card to set fixed options and other functions. Contact your phone operator and check whether your SIM card supports such functions. If the PIN2 code is entered incorrectly three times, the PIN2 code will be blocked. The following instructions will describe how to unlock the card:

- 1) To unlock the PIN2 code, enter the correct PUK2 code into the row on the screen.
- 2) Then enter a new PIN2 code and confirm.
- 3) If requested to re-enter the new PIN2 code, enter the PIN2 code again and confirm.

PUK2 code:

The PUK2 code (code for unlocking the PIN2 code, 8 digits) is used to unlock a locked PIN2 code. The PUK2 code is provided by the phone operator together with the SIM card. In the event that the PUK2 code was not provided, please contact your phone operator. In the event that the PUK2 code is entered incorrectly ten times, it will not be possible to use the PUK2 code function. If you wish to use these functions, please request a new SIM card from your phone operator.

4.3.2 Accounts

In order to fully utilise all the functions of your mobile phone (e.g. Play Store services, photo and document synchronisation, Google Maps) it is appropriate to connect the phone to a Google account. You can add a new or already existing account. In the Add account options, navigate between the individual settings steps using the arrows at the bottom of the screen (step back/forward).

Connecting to an already existing Google account – fill out the login details for the Google account that you use (email address and in the following step your password).

Creating a new Google account – select the option "Create a new account" and fill in your name and surname, select a suitable unique user name (email address) and enter your login password (enter the password twice to eliminate the possibility of an accidental typing error). You can also fill in your contact details for renewing a forgotten password by means of an SMS or an alternative email address. Certain steps in the settings can be skipped entirely or postponed until later without affecting the basic functionality of the Google account (e.g. account upgrade, payment details settings).

Tip:

You do not need to enter your bank card details into your account if you are not planning to use them for purchasing paid applications in the Play Store.

Attention:

A reliable internet connection is required while creating your new account.

Email accounts – the phone supports simultaneous connection to several different email accounts using protocols IMAP, POP3 and/or Exchange in the case of a company email account. Please contact the administrator of your email server for correct setup of your email account.

Other accounts – when certain other applications are installed, they may add their own accounts for adding and administration (e.g. Skype, company accounts, etc.).

4.4 System

Date and time – it is possible to modify the current date and time in the phone, set automatic synchronisation via the GSM network or GPS, set the time and date format.

Planned on/off – the function enables setting the phone to automatically turn on or turn off at a predetermined time and week day.

Attention:

When your SIM card is protected using a PIN code, your phone will not log into the network after an automatic startup until you enter a valid PIN code.

Accessibility – serves to adapt the phone in the event of difficulties with its controls (e.g. gestures for zooming in, large font, speaking a password, delay period for tapping and holding).

Print – this menu item is prepared for the case of a printing service being installed.

Information about the phone – here you will find system information about the device.

5. Technical specifications

Screen size: 5" (IPS LCD technology)

Resolution: HD 720 x 1280 (16.7 million colours)

Accelerometer, light sensor, proximity sensor, gravitational sensor

Dual SIM

CPU: MTK MT6735 (Quad Core 1.0 GHz)

GPU: Mali-720

RAM memory: 1 GB DDR3

Memory storage: 8 GB EMMC NANO

Micro SDHC card slot (up to 32 GB)

Front camera: 5 MP

Rear camera: 8.0 MP (Auto-focus, panorama, digital zoom, illumination LED diode, multiple angle shots, live photography)

GSM 850/900/1800/1900 MHz

FOO LTE 800/ 900/1800/2100/2600

WCDMA 900/2100

Batteries: 2400 mAh Li-Ion

Power input: 5 V 1,000 mA

OS: Android 6.0 Marshmallow

WiFi: IEEE 802.11 b/g/n

Bluetooth: BT 4.0 EOR, A2DP

GPS/AGPS

FM radio (87.5- 108 MHz)

Micro USB 2.0

Dimensions: 145 x 72.6 x 8.8 mm

Weight: 154 g (including the battery)

Accessories: USB cable, power adapter

The technical specifications provided above may change without prior notice.

Address of the manufacturer: FAST ČR, a.s., Černokostelecká 1621, Říčany CZ-251 01

The original version is in the Czech language.

The CE symbol displayed on the unit, in the user's manual and on the packaging shows that the unit meets the basic requirements of the R&TTE Directive, 1995/5/EC, Directive for low voltage 73/23/EEC. The declaration of conformity can be found at www.sencor.cz.

INSTRUCTIONS AND INFORMATION REGARDING THE DISPOSAL OF USED PACKAGING MATERIALS

Dispose of used packaging material at a site designated for waste in your municipality.

DISPOSAL OF USED ELECTRICAL AND ELECTRONIC EQUIPMENT



This symbol on products or original documents means that used electric or electronic products must not be added to ordinary municipal waste. For proper disposal, renewal and recycling hand over these products to determined collection points. Or as an alternative in some European Union states or other European countries you may return your products to the local retailer when buying an equivalent new product. Correct disposal of this product helps save valuable natural resources and prevents damage to the environment caused by improper waste disposal. Ask your local authorities or collection facility for more details. In accordance with national regulations penalties may be imposed for the incorrect disposal of this type of waste.

For business entities in European Union states

If you want to dispose of electric or electronic appliances, ask your retailer or supplier for the necessary information.

Disposal in other countries outside the European Union

This symbol is valid in the European Union. If you wish to dispose of this product, request the necessary information about the correct disposal method from the local council or from your retailer.



This product meets all the basic requirements of EU directives that apply to it.

Changes in the text, design and technical specifications may be made without prior notice and we reserve the right to make these changes.

The original version is in the Czech language.

Address of the manufacturer: FAST ČR, a.s., Černokostelecká 1621, Říčany CZ-251 01

SENCOR®

EN Warranty conditions

Warranty card is not a part of the device packaging.

This product is warranted for the period of 24 months from the date of purchase to the end-user. Warranty is limited to the following conditions. Warranty is referred only to the customer goods using for common domestic use. The claim for service can be applied either at dealer's shop where the product was bought, or at below mentioned authorized service shops. The end-user is obligated to set up a claim immediately when the defects appeared but only till the end of warranty period. The end user is obligated to cooperate to certify the claiming defects. Only completed and clean (according to hygienic standards) product will be accepted. In case of eligible warranty claim the warranty period will be prolonged by the period from the date of claim application till the date of taking over the product by end-user, or the date the end-user is obligated to take it over. To obtain the service under this warranty, end-user is obligated to certify his claim with duly completed following documents: receipt, certificate of warranty, certificate of installation.

This warranty is void especially if apply as follows:

- Defects which were put on sale.
- Wear-out or damage caused by common use.
- The product was damaged by unprofessional or wrong installation, used in contrary to the applicable instruction manual, used in contrary to legal enactment and common process of use or used for another purpose which has been designed for.
- The product was damaged by uncared-for or insufficient maintenance.
- The product was damaged by dirt, accident of force majeure (natural disaster, fire, and flood).
- Defects on functionality caused by low duality of signal, electromagnetic field interference etc.
- The product was mechanically damaged (e.g. broken button, fall).
- Damage caused by use of unsuitable media, fillings, expendable supplies (batteries) or by unsuitable working conditions (e.g. high temperatures, high humidity, quakes).
- Repair, modification or other failure action to the product by unauthorized person.
- End-user did not prove enough his right to claim (time and place of purchase).
- Data on presented documents differs from data on products.
- Cases when the claiming product cannot be indentified according to the presented documents (e.g. the serial number or the warranty seal has been damaged).

Authorized service centers

Visit www.sencor.eu for detailed information about authorized service centers.

