

SENCOR®

SCT-4024MR

USER'S MANUAL

NÁVOD K OBSLUZE

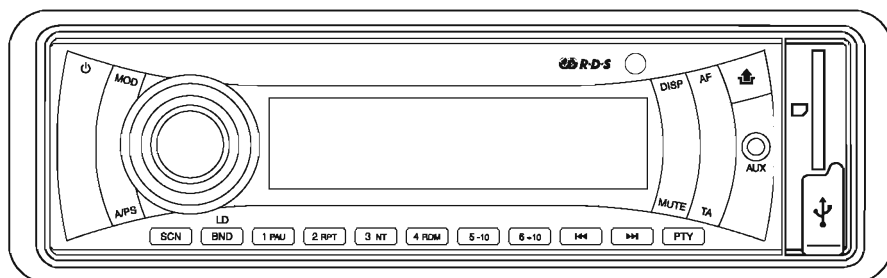
NÁVOD NA OBSLUHU

FELHASZNÁLÓI KÉZIKÖNYV

INSTRUKCJA OBSŁUGI

РУКОВОДСТВО ПОЛЬЗОВАТЕЛЯ

VARTOTOJO VADOVAS



CAR STEREO MP3/WMA PLAYER WITH PLL FM STEREO RADIO RDS
USB / SD/MMC / FRONT AUX INPUT DETACHABLE FRONT PANEL

STEREO MP3/WMA AUTOPŘEHŘÁVAČ PLUS PLL FM STEREO RÁDIO S RDS
USB / SD/MMC / PŘEDNÍ VSTUP AUX / ODNÍMATELNÝ ČELNÍ PANEL

STEREO MP3/WMA AUTOPREHRÁVAČ PLUS PLL FM STEREO RÁDIO S RDS
USB / SD/MMC / PREDNÝ VSTUP AUX / ODNÍMATELNÝ ČELNÝ PANEL

SZTEREO MP3/WMA LEJÁTSZÓ PLL FM SZTEREO RDS RÁDIOVAL
USB / SD/MMC / ELÜLSŐ AUX BEMENET / LEVEHETŐ ELŐLAP

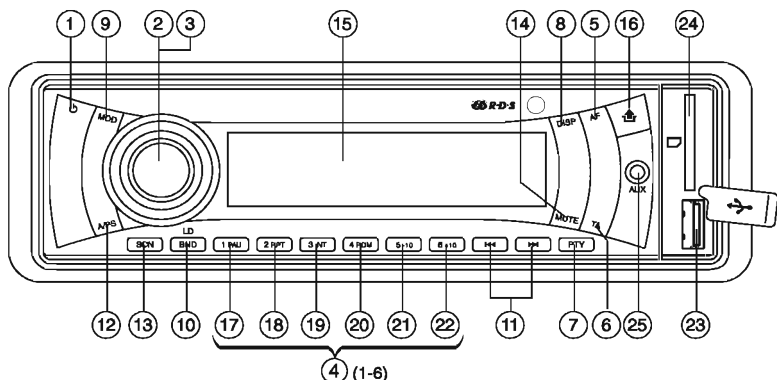
RADIOODTWARZACZ STEREO MP3/WMA PLUS RADIO PLL FM STEREO Z RDS
USB / SD/MMC / PRZEDNIE WEJŚCIE AUX / ZDEJMOWANY PANEL PRZEDNI

АВТОМОБИЛЬНАЯ СТЕРЕОМАГНИТОЛА МР3/ММА С ФУНКЦИЕЙ PLL, СТЕРЕО РАДИО FM, RDS
СЪЕМНАЯ ПЕРЕДНЯЯ ПАНЕЛЬ С РАЗЪЕМАМИ USB / SD / MMC / ВХОДНЫМ РАЗЪЕМОМ AUX

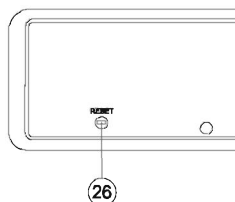
AUTOMOBILINIS STEREOFONINIS MP3/WMA GROTVAS SU PLL FM STEREOFONINIO RADIO RDS
USB / SD/MMC / PRIEKINIS PAGALBINIS ĮVESTIES LIŽDAS NUIMAMAS PRIEKINIS SKYDELIS

EN CZ SK HU PL RU LT

LOCATION OF PARTS AND CONTROLS



1. POWER ON/OFF (⏻)
2. FUNCTION SELECT BUTTON: CONTROLS FOR BASS/TREBLE/BALANCE/FADER/TA/PI/RETUNE/MASK/EON/ BEEP/TA VOL/ADJ/DSP
3. VOL UP/VOL DOWN BUTTON: CONTROLS FOR BASS/TREBLE/BALANCE/FADER/TA/PI/RETUNE/MASK/EON/ BEEP/TA VOL/ADJ/DSP
4. PRESET STATIONS (1, 2, 3, 4, 5, 6)
5. 'AF' function (ALTERNATIVE FREQUENCIES)
6. 'TA' function (TRAFFIC ANNOUNCEMENT)
7. 'PTY' function (PROGRAM TYPE)
8. DISPLAY BUTTON (DISP)
9. MODE (MOD)
10. BAND/LOUDNESS BUTTON (BND/LD)
11. AUTOMATIC OR MANUAL TUNING (FREQ UP ►► OR FREQ DOWN ◄◄) / TRACK/SEARCH BUTTON
12. AUTO SEEK SEARCH TUNING (A/PS)
13. 'SCAN' AUTOMATIC TUNING CONTROL (SCN)
14. MUTE BUTTON (MUTE)
15. LCD DISPLAY
16. PANEL RELEASE BUTTON (🔑)
17. PAUSE BUTTON
18. REPEAT BUTTON
19. INTRO BUTTON (Preview all Tracks)
20. RANDOM BUTTON
- 21, 22. + 10 TRACK SEARCH DOWN/UP (MP3/WMA Files only)
23. USB PORT
24. MULTI-MEDIA CARD (MMC) / SD CARD SLOT
25. AUX IN
26. RESET BUTTON

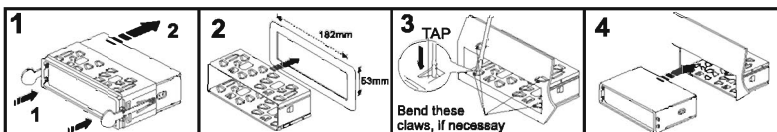


INSTALLATION

PRECAUTIONS

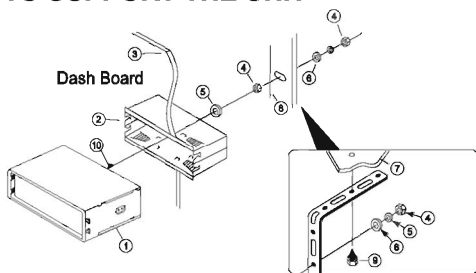
- Choose the mounting location carefully so that the unit will not interfere with the normal driving functions of the driver.
- Avoid installing the unit where it would be subject to high temperatures, such as from direct sunlight or hot air from the heater, or where it would be subject to dust, dirt or excessive vibration.
- Use only the supplied mounting hardware for a safe and secure installation.
- Be sure to remove the front panel before installing the unit.

Note: Inclination angle for car radio installation must not exceed 30° otherwise the front panel will not open.



Note: Keep the release key in the safe place as you may need it in future to remove the unit from the car.

TO SUPPORT THE UNIT



1. UNIT
2. RELEASE CASE
3. DASH BOARD
4. HEX NUT
5. LOCK WASHER
6. PLAIN WASHER
7. CAR BODY
8. REAR SUPPORT STRAP
9. TAPPING SCREW
10. M5 X 15 HEX BOLT

WIRE CONNECTION

RCA Jack Line Out: Red (right) White (left)

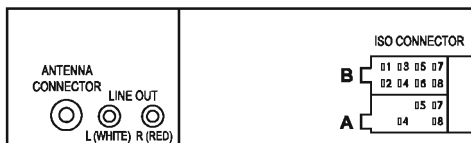
CONNECTOR A

4. MEMORY +12V
5. AUTO ANTENNA OUTPUT
7. +12V (TO IGNITION KEY)
8. GROUND

Note: (connector A no. 7) must be connected by car ignition key in order to avoid that car battery becomes weak when the car will be not used for long period.

CONNECTOR B

1. REAR RIGHT SPEAKER (+)
2. REAR RIGHT SPEAKER (-)
3. FRONT RIGHT SPEAKER (+)
4. FRONT RIGHT SPEAKER (-)
5. FRONT LEFT SPEAKER (+)
6. FRONT LEFT SPEAKER (-)
7. REAR LEFT SPEAKER (+)
8. REAR LEFT SPEAKER (-)



Maintenance

FUSE REPLACEMENT

If the fuse blows, check the power connection and replace the fuse. If the fuse blows again after the replacement, there may be an internal malfunction. In this case, consult your nearest repairing center.

Warning

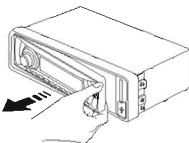
Use the specified amperage fuse for each lead. Use of a higher amperage fuse may cause serious damage.

Detaching and attaching the front panel

The front panel of this unit can be detached in order to prevent the unit from being stolen.

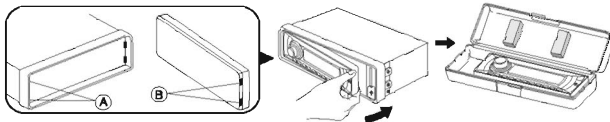
DETACHING THE FRONT PANEL

Before detaching the front panel, be sure to press the button OFF first. Press the button to release the front panel. Pull out the panel towards you in order to detach completely the panel from the main unit. Refer to instruction.



ATTACHING THE FRONT PANEL

Make sure the front panel is in the right way up when attaching it to the unit as it cannot be attached upside down. Bring side B of panel to side A of main unit. Insert the panel in and push until it clicks. Panel is attached.

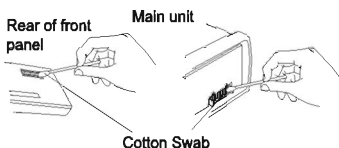


Notes:

- Do not press the front panel hard against the unit when attaching it. It can be easily attached by pressing it lightly against the unit.
- When you carry the front panel with you, put it in the supplied front panel case.
- Do not press hard or give excessive pressure to the display window of the front panel when attaching it to the unit.

CLEANING THE CONNECTOR

The unit may not function properly if the connectors between the unit and the front panel are contaminated with dirt. In order to prevent this from happening, detach the front panel by pressing the button and clean the connector from time to time. Clean the connector with a cotton swab together with contact cleaner as illustrated. Be sure to clean them carefully pin by pin and make sure not to damage the connecting points.



1. POWER ON/OFF (⏻)

Press ⏻ button to turn on the unit. To turn off, press and hold ⏻ button.

2.3. FUNCTION SELECT BUTTON: BASS / TREBLE / BALANCE / FADER / TA / PI / RETUNE / MASK / EON / BEEP / TA VOL / ADJ / DSP

Turning VOL knob (right/left) to adjust VOL/BAS/TRE/BAL/FAD. To select other functions, press the VOL knob shortly until the desired functions are shown on the display. Figure 1 shows how to control functions that are selected using the VOL knob.

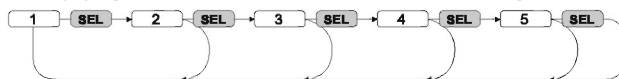
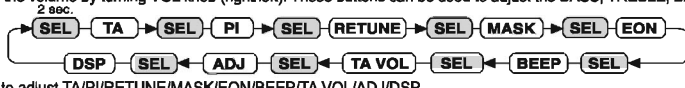


Fig. 1 Selection of sound control functions

1. VOL 2. BAS 3. TRB 4. BAL 5. FAD

Increase or decrease the volume by turning VOL knob (right/left). These buttons can be used to adjust the BASS, TREBLE, BALANCE and FADER.



Press and hold VOL to adjust TA/PI/RETUNE/MASK/EON/BEEP/TA VOL/ADJ/DSP

TA SEEK/ALARM

TA SEEK mode: When newly turned station does not receive TP information for 5 sec., the radio retunes to next station which has not the same station (PI) as the last station, but has the TP information.

In TA seek mode, the current station can be changed to the completely different station because the unit searches TP station when the field strength of the current station is very weak, or the current station has no TP signal.

TA ALARM mode: Any automatic retune mode is not activated, just can hear Beep sound.

PI SOUND

Action when 2 stations with different programme identification (PI) codes are on the same frequency:

SOUND: The radio switches to the new channel for a few seconds and then switches back again

MUTE: The radio is muted

RETUNE L/S

RETUNE L: Select 90 seconds as the initial time of automatic TA search.

RETUNE S: Select 30 seconds as initial time.

MASK DPI/ALL

MASK DPI: masked only the AF which has different PI.

MASK ALL: masked the AF which has different PI and NO RDS signal with field strength.

EON

Selected EON condition, ON or OFF.

BEEP

ALL: Button sound is on permanently

2nd: Button sound is triggered by secondary button functions (hold button down for a while)

OFF: Button sound is off

TA VOL

Traffic Announcement Volume

ADJ

Digital Clock. To adjust, turn VOL knob to right for hours and turn VOL knob to left for minutes.

DSP Modes

CLASSIC, ROCK, POP, FLAT, NONE

4. PRESET STATIONS (1,2,3,4,5,8)

When pressed short, these keys select a preset station directly. When pressed longer than 1 sec., current station is stored in preset memory bank.

USING THE RDS FUNCTION

What is RDS?

The RDS (Radio Data System) is a digital information system developed by the EBU (European Broadcast Union). Piggy-backed on normal FM broadcasts, RDS offers a variety of information services and automatic retuning functions for RDS-compatible car stereos.

In 1988, RDS became available in the United Kingdom, France, West Germany, Ireland and Sweden. Test transmissions are being conducted in many other European countries. It is expected that RDS will be available in most Western European countries in the near future.

5. 'AF' function (ALTERNATIVE FREQUENCIES)

When pressed short, AF switching mode is selected.

When AF switching mode is selected, the radio checks the signal strength of the AF all the time.

6. 'TA' function (TRAFFIC ANNOUNCEMENT)

When pressed short, it is activated as TA mode on or off

When TA mode is on and traffic announcement is transmitted

– If the volume level was under the threshold point, it will be raised to the threshold point.

– When TP station is received, TP segment is turned on in LCD display.

7. 'PTY' function (PROGRAM TYPE)

Each press of PTY button will toggle between *PTY Music*, *PTY Speech* and *PTY Off*.

When *PTY Music* is selected, press Buttons (1 - 6) for desired program types. Unit automatically search for corresponding programs.

- | | |
|---------------------|--------------------|
| 1 Pop M, Rock M | 4 Jazz, Country |
| 2 Easy M, Light M | 5 Nation M, Oldies |
| 3 Classics, Other M | 6 Folk M |

When *PTY Speech* is selected, press Buttons (1 - 6) for desired program types. Unit automatically search for corresponding programs.

- | | |
|----------------------------|------------------------------|
| 1 News, Affairs, Info | 4 Weather, Finance, Children |
| 2 Sport, Educate, Drama | 5 Social, Religion, Phone IN |
| 3 Culture, Science, Varied | 6 Travel, Leisure, Document |

Tips: Since each button number can store multiple program types, i.e. Button 1 stores Pop and Rock music, to switch between Pop and Rock music, simply press button 1 repeatedly until the desired program type shows in display.

8. DISPLAY BUTTON (DISP)

Press **DISP** button to switch between display informations such as radio frequencies, clock, track and other informations depending on the playing MODE.

9. MODE BUTTON (MOD)

By pressing this key, user can select. AUX/TUNER/USB or MMC/SD mode.

10. BAND/LOUDNESS BUTTON (BND/LD)

Each band is toggled cyclically by pressing this key FM1---FM2---FM3.

LOUDNESS: Press and hold this button, you can select **LOUDNESS** mode.

11. AUTOMATIC OR MANUAL TUNING (FREQ UP ►► or FREQ DOWN ◀◀)

(A) RADIO MODE

When pressed short, these keys are operated as SEEK tuning mode.

When pressed longer than 1 sec., they are operated as MANUAL tuning mode.

(B) MP3/WMA PLAYER MODE

When pressed short, they are operated as TRACK UP or TRACK DOWN mode.

When pressed longer than 1 sec., they are operated as CUE or REVIEW mode.

12. AUTO SEEK SEARCH TUNING (A/PS)

By pressing shortly, the radio searches for each preset station.

When field strength level is bigger than the threshold level of stop level, the radio is holding at that preset number for 5 sec. with releasing mute, and then searches again.

By pressing longer than 1 sec, and then 6 strongest stations are preset to the corresponding preset number. When AS operation is finished, the radio executes the preset scan.

13. 'SCAN' AUTOMATIC TUNING CONTROL (SCN)

1. Press the MODE button to switch to Radio mode.

2. Press SCAN button when a station has been found, it is played for 5 seconds and then the auto-scan is continued. Press the button again to stop the auto-scan to listen to the currently played station.


14. MUTE BUTTON (MUTE)

Press this button to mute the sound at once. Press again to return to previous volume level.

15. LCD DISPLAY

The Liquid Crystal Display will display the current state of the unit.

16. PANEL RELEASE BUTTON

Press button  and the right-hand part of the panel will be released.

MP3/WMA CONTROL LOCATION OF PARTS

TRACK/SEARCH BUTTON (11)

FORWARD AND REVERSE TRACK SEARCH (or changing songs)

Press the SKIP button (◀◀ or ►►) during play to go to the desired track(song).

◀◀.....REVERSE ►►.....FORWARD

Press and hold the SKIP button (◀◀ or ►►) during play to scan at high speed. When the desired music section is found, release the button. Normal play will resume.

17. PAUSE BUTTON

During "PLAY", press (17) 'PAU' button to "PAUSE". Press it again to resume play.

18. REPEAT BUTTON

When this button is pressed, 'RPT' indication is displayed and play of the selected track will be continually repeated until the Track repeat mode is cancelled by pressing 'RPT' button again.

19. INTRO BUTTON (Preview all Tracks)

When this button is pressed, 'INT' indication is displayed and the first several seconds of each track are played. Press again to stop intro and listen to track.

20. RANDOM BUTTON

When this button is pressed, 'RDM' indication is displayed and each track are played in random instead of normal progression. To cancel RANDOM mode, press 'RDM' button again.

21, 22. M5: 10 Track down / M6: 10 Track up (In case of MP3/WMA files) M5: 10 Track down / M6: 10 Track up

HOW TO SELECT MP3/WMA FILES

Searching by Track

1. Press **A/PS**. Digit starts blinking.
2. Rotate VOL RIGHT / VOL left knob until the desired track number shows then press **VOL** knob.
3. Song number you selected will start to play.

23, 24. USB/ SD/MMC MEMORY CARD

The device is equipped with a USB interface and a memory card reader for SD/MMC cards. MP3 or WMA files stored on these media can be played.

1. Plug your USB storage medium into the USB port.
2. If you use a memory card, insert it into the memory card reader.
3. The player automatically switches to the input used and starts playback.
4. See the section on operations common for audio files on how to control USB or memory card playback.

Note:

- Due to the great variety of devices with USB and SD/MMC card interfaces that sometimes have manufacturer-specific functions, we cannot guarantee that all media will be recognized and that all operational functions will be available with this device.
- You cannot operate USB hard drives on the device.

25. FRONT AUX IN

An external audio source (e.g. portable MP3 player) can be connected to the AUX IN socket to be played back by the vehicle loudspeakers. Press the **MOD/LOD** button to select the **AUX IN** mode.

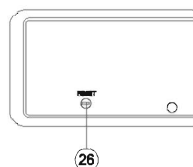
- Connect the AUX IN socket with the audio output of the external device.

26 RESET

Reset button is placed on the housing.

The reset button is to be activated for the following reason:

- Initial installation of the unit when all wiring is completed.
- All the function button do not operate.
- Error symbol on the display.



TECHNICAL SPECIFICATIONS

MP3/WMA PLAYER SECTION

Signal to Noise Ratio	> 60 dB
Channel Separation	> 50 dB (1kHz)
Frequency Response	20Hz - 20 kHz

TUNER (FM)

Frequency range	87.5-108 MHz
Sensitivity	2.8 μ V
Stereo separation	30 dB
Signal to noise ratio	50 dB
Channel step	50 kHz

LINE-OUT

Output	1.5V (max.)
Impedance	10k Ohm

FRONT AUX IN

Frequency Response	20 Hz - 20 kHz
Sensitivity	775 mV
Impedance	20k Ohm

GENERAL

Power Supply	12V DC (10.8-15.6V allowable)
Speaker impedance	4 or 8 Ohm
Output power	40W x 4CH
Fuse	10A

Note: Specification and the design are subject to possible modification without notice due to improvements.

INSTRUCTIONS AND INFORMATION REGARDING THE DISPOSAL OF USED PACKAGING MATERIALS

Dispose of packaging material at a public waste disposal site.

DISPOSAL OF USED ELECTRICAL AND ELECTRONIC APPLIANCES



The meaning of the symbol on the product, its accessory or packaging indicates that this product shall not be treated as household waste. Please, dispose of this product at your applicable collection point for the recycling of electrical & electronic equipment waste. Alternatively in some states of the European Union or other European states you may return your products to your local retailer when buying an equivalent new product. The correct disposal of this product will help save valuable natural resources and help in preventing the potential negative impact on the environment and human health, which could be caused as a result of improper liquidation of waste. Please ask your local authorities or the nearest waste collection centre for further details.

The improper disposal of this type of waste may fall subject to national regulations for fines.

For business entities in the European Union

If you wish to dispose of an electrical or electronic device, request the necessary information from your seller or supplier.

Disposal in other countries outside the European Union

If you wish to dispose of this product, request the necessary information about the correct disposal method from local government departments or from your seller.



This product meets all the basic EU regulation requirements that relate to it.

Changes to the text, design and technical specifications may occur without prior notice and we reserve the right to make these changes.