

SENCOR®

SDF 890T

Multimedia Picture Frame with DVB-T

Multimediální fotorámeček s DVB-T

Multimediálny fotorámček s DVB-T

Multimédia fotokeret DVB-T-vel

Multimedialna ramka fotograficzna z DVB-T



INSTRUCTION MANUAL

NÁVOD K OBSLUZE

NÁVOD NA OBSLUHU

HASZNÁLATI ÚTMUTATÓ

INSTRUKCJA OBSŁUGI

EN CZ SK HU PL

Contents

Important Safety Instructions	1-2
Appendix to LCD TV Instruction Manual	3
Features and functions	4
Description of the device	5
Remote control	6-8
Main menu	9-19
1. First Time Installation	9
2. DVB Mode of Main Menu	10
2.1. TV Program.....	10
2.2. Music Program	11
2.3. Sort.....	11
2.4. Country.....	13
2.5. Language	13
2.6. GMT Usage.....	14
2.7. Time Zone	14
2.8. System Schedule	14
3. Digital TV	15
4. Digital Picture Frame	16
4.1. DPF Setup Menu.....	16
4.2. DPF Menu	16
5. Accessories Menu	18
5.1. Calendar.....	18
5.2. Clock	18
5.3. Alarm.....	18
6. Setup Menu	19
6.1. System Setting	19
Technical Specifications	20

Thank you for choosing this product. Before connecting, operating or adjusting this product, please read this user's manual carefully and completely – contains important information for safe and optimal use of all features and functions. Store the instruction manual in case you need it again.

Important Safety instructions



Safety is important.



To ensure your safety and the safety of others, please ensure you read the Safety Instructions before you operate this product.

Keep this information in a safe place for future reference. Please read all the safety information before using the product.

Safety Considerations:

1. To prevent risk of fire or injury through electric shock, do not expose the device to the effects of dripping or splashing water, rain or moisture. Do not place any object filled with a liquid (e.g. vases) on the device.
2. The device is delivered with AC adaptor.
3. The power plug and the device's connector are used as a disconnecting device and for this reason these must remain easily accessible.
4. Always remember to remove the plug from the mains socket before disconnecting the power lead from the back of the unit.
5. Do not block the device power plug and it must be easily accessible during the operation.
6. Do not place naked flame sources, such as candles, on the top of the device.
7. The ventilation must not be impeded by covering the ventilation openings with objects such as newspaper, tablecloths, curtains etc. Ventilation slots and openings are used for device ventilation and for safe operation and overheating protection of the device. Do not put the product on a bed, sofa or anything that blocks ventilation. The device should not be installed into a closed place such as bookcase or shelf until sufficient ventilation will be provided or manufacturer's instructions will be kept.
8. Protect the power cord from being walked on or placed any objects. Position the cables so that they cannot be walked on or pinched by item placed on or against them.
9. Do not use the device near the source of water – for example near the bath, the lavatory, the kitchen sink or laundry tanks; in wet basement, near the swimming pool or any other tank with water or other liquid.
10. Do not let the device get wet.
11. Only use accessories recommended by the manufacturer. Other accessory than recommended can cause a risk of dangerous situation.
12. Always switch off and disconnect the device from mains outlet before cleaning. Do not use liquid or aerosol cleaners. Clean the device with a soft, damp (not wet) cloth.
13. Do not insert any object into the ventilation slots as these can cause a short circuit or a dangerous situation as it is fire or electric shock. Never pour any liquid into the device.
14. In no cases repair the device by yourself. There are no user serviceable parts in this device. After opening the case or removing the cover, you could expose yourself to dangerous voltage or other danger. Refer all servicing to qualified service personnel.
15. Do not install near any heat sources such as radiators, stoves, or other apparatus (including amplifiers) that produce heat.

Important Safety instructions



WARNING: To reduce the risk of electric shock, do not remove cover (or back). No user serviceable parts inside. Refer servicing to qualified service personnel.



IMPORTANT: Do not install the device into narrow places as for example bookcase.

Battery

Important: In case of improper insert risk of battery burst. Always change the battery for the same type.

Warning: Batteries (battery or battery-pack) shall not be exposed to excessive heat such as sunshine, fire or the like.

Pay higher attention to the use of batteries with regard to the environment. Dispose only discharged batteries. You should not dispose with household waste, but dispose to the special places or at you retailer.

WARNING: To prevent risk of fire or injury through electric shock, do not expose this device to rain or moisture.

Precautions When Still Image is Displayed, Red/Blue/Green/Black spots on the screen

A still image may cause permanent damage to TV screen

- Do not display still image on the LCD panel for more than 2 hours as it can cause screen image retention. This image retention is known as „screen bum“. To avoid such image retention, reduce the degree of brightness and contrast of the screen during still image watching.
- Similar „screen bum“ effect can appear on the LCD panel due to still TV channel logo displaying.
- Watching TV in 4:3, 16:9 or similar modes which doesn't cover whole screen for long period of time may leave traces of borders displayed on the left, right or center of the screen caused by the difference of light emission on the screen. Playing a DVD or a game console can cause a similar effect to the screen.
- Displaying still images from video games and PC for longer than a certain period of time may produce partial after-images. To prevent this effect reduce the brightness and contrast when displaying still images.



There may appear red spots, blue spots, green spots and black spots on the screen

- This is a characteristic of liquid crystal panels and is not a problem. The liquid crystal panels are built with very high precision technology giving you fine picture details. Occasionally a few non-active pixels may appear on the screen as fixed point of red, green, blue or black (up to 0.001 % of total display pixels). Please note this doesn't affect the performance of your LCD TV.

Damage caused by above reasons is not covered by the Warranty!

Features and functions

This device has been designed to receive terrestrial digital TV (DVB-T) and it can be used as a digital picture frame, to play MP3 music files from USB device or SD (MS or MMC) memory card.

Digital Picture Frame (DPF)

- 8 inch Digital LCD screen display, at 16:9 ratio
- play MP3 music files, JPEG files and video files from inserted memory card or USB
- support JPEG; MP3; MPEG-1; MPEG-2 and MPEG-4 files
- support SD, MMC, MS card, and USB device
- built-in AV signal output jack/audio jack and earphone jack
- automatic slideshow to play JPEG picture files from memory card including 17 transition effects to choose
- play slideshow with music on the background
- slideshow intervals of 5s/10s/15s/30s/1min/3min
- easily functioned by remote control

Accessories

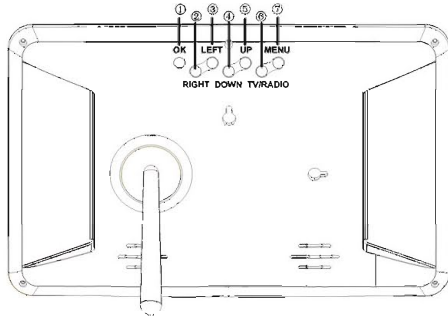
- clock, alarm and calendar function
- firmware update

Digital TV (DVB-T)

- reception of DVB-T TV according to MPEG-2 standard
- modulation format: QPSK, 16-QAM, 64-QAM
- bandwidth: 7 MHz (VHF) and 8 MHz (UHF)
- input frequency: VHF 170 – 230MHz; UHF 470 – 862MHz
- code rate: 1/2,2/3,3/4,5/6,7/8
- support EPG
- support Teletext and Subtitles
- automatic and manual search for TV channels in many countries (including CZ)
- channel manager functions including favorite programs, channel lock, program sort, delete TV channels
- favorite programs list, and TV or radio programs preview
- support program schedule
- support parental lock
- support TV programs display in thumbnail mode
- support show information of signal strength and quality of programs
- supported display type: 4:3PS, 4:3LB, 16:9
- multi OSD languages including Czech

Description of the device

Description of the device



- | | |
|---|----------|
| ① | OK |
| ② | RIGHT |
| ③ | LEFT |
| ④ | DOWN |
| ⑤ | UP |
| ⑥ | TV/RADIO |
| ⑦ | MENU |

Picture frame can be either mounted on the wall or placed on a stable surface. Both are possible to focus the picture in landscape or portrait. Menu and information are always displayed in landscape. Use the supplied supporting foot only on a stable surface. Be careful when using the supporting foot. Inserting and detaching the foot is marked on the back of the device.

Remote control

Remote Control

Key function description



SYMBOL	DESCRIPTION
	mute
TV/RADIO	switch between TV/Radio
DPF	open DPF menu
INFO	show the present channel information
1-9, 0	for channel select
	fast backwards
	fast forwards
RECALL	return to the previous channel
FAV	turn on favorite program function
	backward skip to previous piece/file/picture
	forward skip to next piece/file/picture
SETUP	setup menu/exit from menu
	play/pause
	stop
	up direction button/picture flip horizontally/channel up
	down direction button/picture flip vertically/channel down
OK	enter/setting
	left direction button/picture rotate
	right direction button/picture rotate
REPEAT	repeat
EXIT	exit

Remote control



MENU	get back to main menu
LIST	program list
TTX	teletext mode
EPG	enter to EPG mode
VOL+	increase volume
VOL-	decrease volume
AUDIO	enter to audio mode, red teletext button
SUBTITLE	enter to subtitle mode, green teletext button
YELLOW	yellow teletext button, Multiview function
BLUE	blue teletext button, ratio-change button

Remote control

First use of remote control

The remote control is protected by a plastic film from the factory. Remove the plastic film by pulling the protection part before using.

Exchanging the battery

1. Press a small pin of battery holder towards inside and at the same time, pull it out from the remote control with the battery.
2. Place new CR2025 battery into the holder. Pay attention to the correct polarity (+).
3. Push battery holder back until it clicks.

BATTERY

IMPROPER USE OF BATTERY CAN CAUSE BATTERY LEAKAGE AND CORROSION OR EXPLOSION.

To ensure that the remote control works correctly, proceed according to the instructions below:

- Do not insert the batteries in the wrong direction.
- Do not recharge, heat, open or short the batteries.
- Do not throw batteries into a fire.
- Do not leave discharged batteries in the remote control.
- Do not combine various types of batteries or new and old batteries.
- If you are not using the remote control for a longer period of time, remove the batteries to prevent potential damage caused by a subsequent battery leakage.
- If the remote control is not working correctly or its operational range is reduced, change all batteries for new ones.
- If electrolyte leaks out from the batteries, have the remote control cleaned by an authorised service centre.

USB interface

This device is equipped by an USB slot to play picture files, music files and video files from external memory device.

Memory card reader

This device is equipped by a memory card reader slot 3 in 1. It is possible to insert 3 types of memory cards – MMC, SD (HC), MS. Press DPF button and choose the desired function to play MP3 music files or MPEG-4 video files or JPEG files.

Notes:

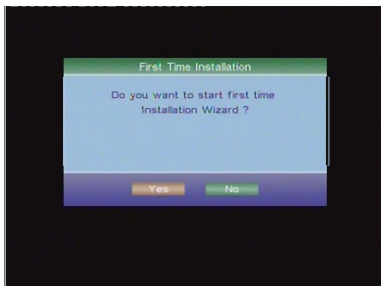
- USB port is compatible with flash memory. But no compatibility is ensured with MP3 player using own software.
- USB port is not able to charge high energy consumption memory devices (external HDD). In such case, use a device with its own charge adaptor.
- When using USB mode, insert the device in the correct direction. Otherwise, you can damage the USB device or the device.
- External memory device should have a FAT/FAT32 file format, one part, without protection.
- Full compatibility with all devices on the market cannot be guaranteed. It is necessary to try suitable external device.

Main menu

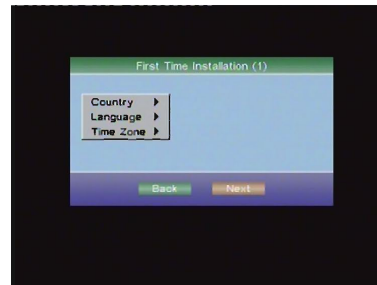
1. First Time Installation

After all the connections have been made properly, switch on your TV. Make sure the receiver is connected to the mains and press <ON> to switch the receiver on. If you are using the receiver for the first time, a **First Time Installation** menu will be displayed to guide you through the initial setup. Use the remote control to finish the setup.

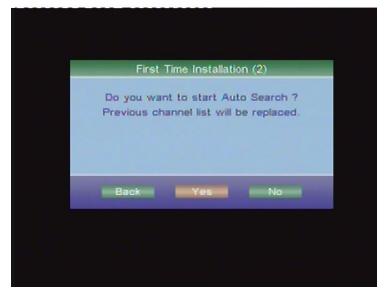
- a) At the **First time installation** menu, select **YES** and press <OK> button on the remote control to proceed.



- b) Enter your regional settings, include your Country, Language, Time Zone. Then select <NEXT> to proceed.



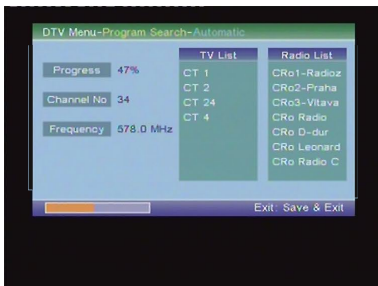
- c) Select **Yes** to start the automatic channel search.



- d) Wait to complete the scanning.

Main menu

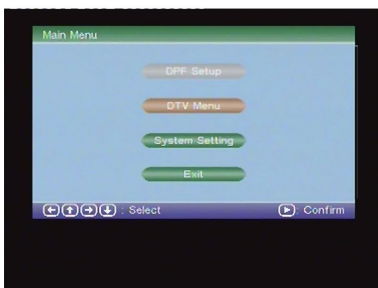
In case you want to stop the scanning, press the <EXIT> button. The channels already found will still be stored.



e) When finished, all active channels found will be stored automatically. The last found channel will be played.

2. DVB Mode of Main Menu

Press the <SETUP> button, the DVB main setup menu appears the screen.



Press the <UP> and <DOWN> button move on the DVB Menu and choose the DVB Menu-Program list option. Press OK or PLAY/PAUSE (▶||) to confirm.

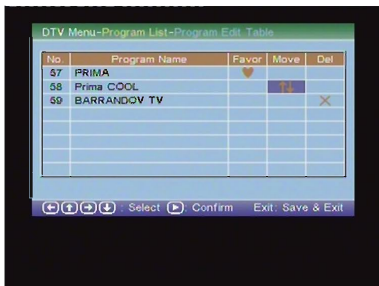
2.1. TV Program

Press the <RIGHT> button to highlight the TV Program. Then press the <OK> button to enter, the TV program options appear on the screen.



Main menu

All active channels are listed in the **Program List**, allowing you to make your own favorite channel group, move, delete channels.



Creating Favorite Channel Groups

This feature allows you to group your favorite channels. To create your favorite groups:

- Select the channel which you would like to add to the group and go to the **Favor** column.
- When the **Favor** column of the desired channel is highlighted, one red heart symbol will appear after press the <OK> button. Pressing the <OK> button again will unselect the channel of the favorite group.
- Once your favorite group is created, you can press the <FAV> keys to quick access your favorite channels.

Moving a Channel

- Select the channel which you like to move and go to the **Move** column.
- Press <OK> button and a ↓↑ symbol will be displayed.

- Use the <UP / DOWN> key to move the channel to a desired position.
- Press <OK> button again will be exit the moving channel mode.

Deleting a Channel

- Select the channel which you like to delete and go to the **Del** column.
- Press <OK> button and an **X** symbol will be displayed. Repeat this step in the channel to be deleted.
- Press <SETUP> or <EXIT> button and the marked channel will be deleted.
- Press <OK> button again will exit the deleting channel mode.

2.2. Radio Program

Press the <RIGHT> button to highlight the Radio Program. Then press the <OK> button to enter, the Radio program options appear on the screen.

NOTE: This Radio program options operation same the TV Program.

2.3. Sort

Press the <DOWN> button to highlight the Sort option, you can choose the channels Sort style. As: By Name, By Service ID, By Channel number.

Main menu

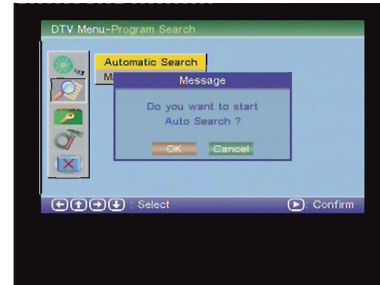
Press the Up and Down button move on the DVB Menu-Program Search option appears on the screen.



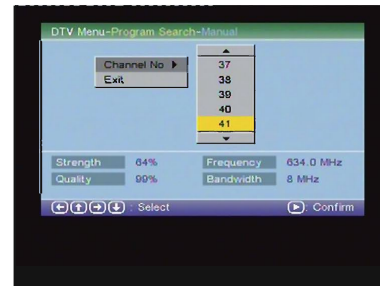
In the DVB Menu-Program Search, you can setup the Automatic Search, Manual Search options.

Automatic Search

Choose the Automatic Search option. This operation is the same as the First Time Installation. Refer to First time Installation.



Manual Search



Main menu

If any channel is missing after auto search, or you want to add newly launched channels, you can use **Manual Search** to scan the desired channels. To manually search the target channel, you must know its parameters, e.g., the channel number. After the channel is found, it is appended to the current channel list.

- a) Enter the **Manual Search menu via Main Menu > Program Search > Manual Search**.
- b) Specify the appropriate channel number in the **Channel No** field by press <DOWN> and <UP> button. Enter your selection, the frequency and bandwidth values are changed accordingly.
- c) Select <OK> button to start manual search
- d) If no signal is found, a message indicating no signal will appear. Otherwise scanner channel will be saved and appended to the current channel list.

Parental Control

This feature allows you to prevent children or unauthorized people from watching channels.

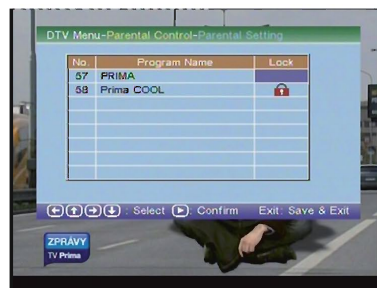
- 1) Enter **Main Menu > Parental Control**. First, you will need to enter PIN as prompted to use the parental control menu. (The default PIN is 8888 – you can change to you own 4-digit number.)
- 2) After correct PIN input, the following options are provided:

Channel Lock

Allows you to activate or de-activate the overall parental control. When set to **YES**, all the channels with locking settings will be locked.

Parental Setting

In the channel list, select the channel you want to lock and then press <OK>. A padlock symbol will be displayed. To remove the lock, press <OK> again.



2.4. Country

In the Country options, you can choose a kinds of the Countries. As: England Germany, Italy, France, Spain etc.

2.5. Language

Press the <DOWN> button to highlight the Language options. Then press the <OK> button to into the Language setup.

1 st /2nd Audio

This option allows you to select your first and second choice for the audio language. If neither of your selected language is available on the program transmitted, the main language of the program will be used.

Main menu

Subtitle

Allows you to select the subtitle language. If your selected language is not available on the program transmitted, the main language of the program will be used. Exit: you can choose the Exit options to return the System setting.

2.6. GMT usage

Allows you to enable/disable Greenwich Mean Time (GMT) usage. If you know the GMT time zone of your location, set **GMT usage** to **ON** and select an appropriate time zone. If you prefer to set the time manually, select **OFF** in **GMT usage** item and then manually select the date and time.

2.7. Time Zone

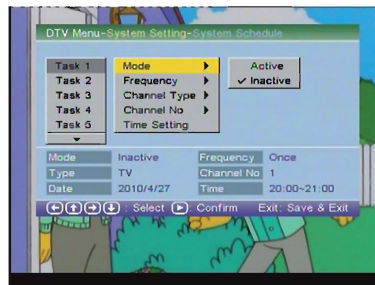
Select an appropriate time zone to display the local time correctly. Both EPG and system schedule need a correct time zone setting.

2.8. System Schedule

Press the <DOWN> button to highlight the System Schedule options. Then press the <OK> button to enter the System schedule setup. This feature allows the receiver to automatically switch on and tune to a pre-specified channel for a pre-set length of time. Up to 10 tasks can be scheduled.

- In the **Schedule** pane, use the <UP/DOWN> key to select a task and use <RIGHT/LEFT > key to switch between **Inactive** and **Active**.
- Press <OK> to enter the detail page.

- Enter the following settings as required. Use the <UP/DOWN> key to move between setting items, the <RIGHT/LEFT> key to switch between available selections and numeric keys to enter numeric value. **Mode:** You can repeat the task by setting the frequency as **Once**, **Daily** or **Weekly**. Or you can select Stop to disable the task. **Start and End Time:** Enter the start and end time that automatically turns on and off the receiver. **Channel Type:** Select TV or radio channel as required. **Channel No:** Select the channel to be played at scheduled time.
- When the setting is done, press <SETUP> or <EXIT> to save the changes.

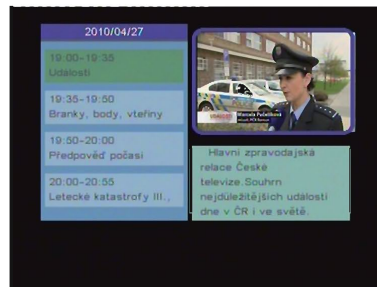


Main menu

3. Digital TV

After choosing **Digital TV** menu, press OK or PLAY/PAUSE (▶||) button and for operating the DVB-T channels you can use the following buttons:

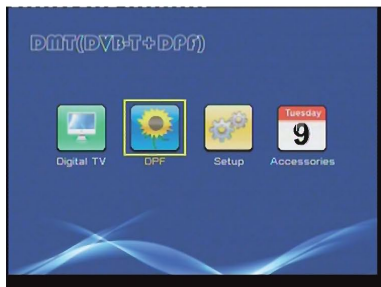
- **MUTE** – mute the system/restore the volume
- **VOL +/-** – volume control
- **MENU** – get back to the main menu while playing
- **TXT** – teletext/TV switch. Press EXIT button to leave the teletext mode. To browse, use colour or numeric buttons upon definition.
- **SUBTITLE** – display subtitles. Content depends on the broadcaster.
- **AUDIO** – audio setting information. Content depends on the broadcaster.
- **EPG** – information about current and future programs. To move in EPG mode, use the directions buttons, OK button and EXIT. Users can display the today program list and program list for future days pressing PREV and NEXT buttons. Press OK button to enter schedule. It is possible to display description about each emission. Content depends on the broadcaster.



- **YELLOW button** – Multiview function
- **INFO** – information about the playing channel (channel no., channel name, signal strength and signal quality).
- **TV/RADIO** – switch between TV and radio mode.

Main menu

4. Digital Photo Frame (DPF)



4.1. DPF Setup Menu

Photo Setting

- **Interval Time**
Intervals of slideshow for your option.
- **Transition Effect**
Different transition effects for your option.
- **Show type**
There are two options to choose: **Fit Screen**, **Full Screen**.
- **Browse**
This option is used for choosing picture browse mode. There are two options for choices: **Thumbnail** and **File manager**.

Auto-Play

This option provides users to choose **On** or **Off** photo/music/movie auto-play function.

Exit

Option to exit the program.

4.2. DPF Menu

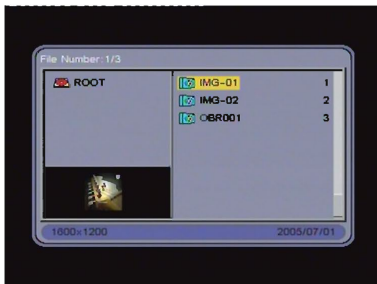
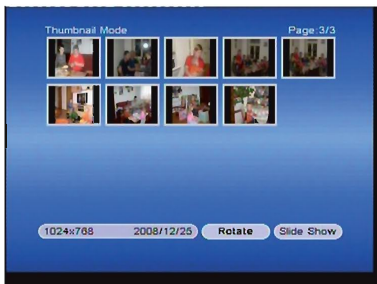


4.2.1. Photo/Music/Movie

After choosing **Photo/Music/Movie**, press OK or PLAY/PAUSE (▶||) button. The system will automatically check whether USB or memory card or any other compatible memory device is connected. Otherwise, it will come back to DPF menu.

Note

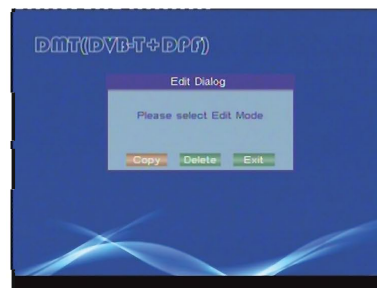
- The device does not support reading multi devices at the same time.
- If **Auto-Play** function is set on, the device will automatically play after inserting.
- If **Auto-Play** function is set off, the device will enter **Thumbnail** or **File Manager** mode (after inserting media with music or video file). When you choose the file you wish to play, press OK or PLAY/PAUSE (▶||) to play it.



- Music can be in mp3 or wma format.
- If video avi file contains subtitles (SRT, SUB, TXT), both files with the same name but different file extension, then the device will display the subtitles while playing the video file.
- Video picture can be in MPEG-2 (MPG), MPEG-4 (AVI DivX 4, 5 or Xvid codec) or VOB format.
- Playing of all versions and encoded pictures, music and videos (or background music) is not guaranteed.

4.2.2. Photo+Music

After choosing **Photo+Music**, press OK or PLAY/PAUSE (▶||) button. The system will automatically check whether USB or memory card or any other compatible memory device is connected. Otherwise, it will come back to DPF menu.



4.2.3. Edit

After choosing **Edit**, press OK or PLAY/PAUSE (▶||) button. The system will enter **Edit** mode, where three options for your choice are available: **Copy**, **Delete** and **Exit**.

- **Copy**

This option is used to copy pictures from USB or Memory card to internal memory and set them as screen savers. Choose a picture by pressing ▲▼, then press OK or PLAY/PAUSE (▶||) button to confirm selection. Selection will be cancel by pressing OK or PLAY/PAUSE (▶||) button again. To store the picture, press ◀▶ to choose **Save**.

Main menu

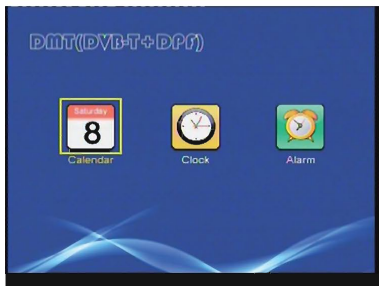
- **Delete**

This option is used to delete the stored screen savers. Choose the **Delete** option and press OK or PLAY/PAUSE (▶||) button to enter **Delete** mode. Using the direction buttons select the pictures you wish to delete. Then press OK or PLAY/PAUSE (▶||) button to delete the selected one. To delete all pictures choose **Delete All**. To change the slideshow order of the screen savers choose **Sort** option. Firstly select the desired picture and press OK or PLAY/PAUSE (▶||) button to confirm. Using ◀▶ buttons choose the place where you wish to insert the picture and press OK or PLAY/PAUSE (▶||) button to confirm. To check the slideshow order, select **Slide Show** and press OK or PLAY/PAUSE (▶||) button to confirm.

4.2.4. Favorite

This option is to slideshow the pictures saved in internal flash.

5. Accessories Menu

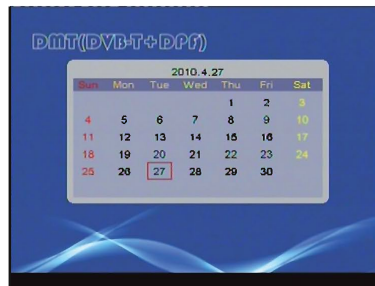


5.1. Calendar

Choose **Calendar** in **Accessories Menu** and press OK or PLAY/PAUSE (▶||) button to enter the calendar setting interface.

- **Display**

This option is to display **Calendar**. Current date is set by system. To browse different months use ▲▼ buttons, or to check different years press ◀▶.

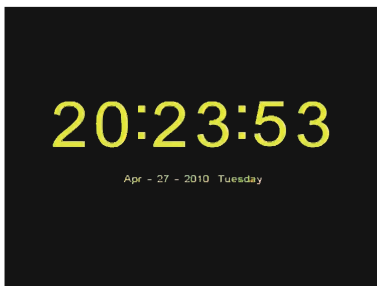


- **Set Date**
You can set date of system.
- **Exit**
Get back to **Accessories Menu**.

Main menu

5.2. Clock

Choose **Clock** in **Accessories Menu** and press OK or PLAY/PAUSE (▶||) button. The clock setting interface will appear on the screen.



5.3. Alarm

Choose **Alarm** in **Accessories Menu** and press OK or PLAY/PAUSE (▶||) button. The alarm setting interface will appear on the screen.

6. Setup Menu

6.1. System Setting

Language Setup

- **OSD Language**
This option is used to set OSD language.
- **Encoding**
Two options: Western European, Central European.

Display Setup

The following option can be set up: **TV Standard**, **AV Output**, **Display type**, **Brightness**, **Contrast**, **TFT Brightness**, **TFT Contrast** and **TFT Saturation** in this menu.

Note

- When setting the TV system, the TV format change can be shown only on the TV screen.
- When choosing the AV Output, there are available two options – **TV** and **Panel**. When selecting TV, then you can watch the change of AV Output function.

Tip: If for whatever reason an image does not appear on the external TV screen, turn the device off and then on again, the image will appear on the panel of the device.

Preference

- **Change Pin**
This option is to change pin.
- **Default**
After choosing this option, all the settings will turn back to factory setting.

Exit

Go back to **Setup Menu**.

Technical Specifications

Panel Size	8 inches
Resolution	800 × 3RGBx480
Screen Size Mode	16 : 9
Modulation format	QPSK, 16-QAM, 64-QAM
Bandwidth	6, 7 or 8 MHz
Input Frequency	VHF 170 - 230MHz, UHF 470 - 862MHz
Trans Mode	2k or 8k FFT
Power Requirement	DC 12V/1A
Power Consumption	10W
Speaker Output	1W × 2

Note

Terrestrial digital TV reception is dependant on the area. Please check coverage before purchasing the product.

Instructions for the correct disposal of the product

INSTRUCTIONS AND INFORMATION REGARDING THE DISPOSAL OF USED PACKAGING MATERIALS

Dispose of packaging material at a public waste disposal site.

DISPOSAL OF USED ELECTRICAL AND ELECTRONIC APPLIANCES



The meaning of the symbol on the product, its accessory or packaging indicates that this product shall not be treated as household waste. Please, dispose of this product at your applicable collection point for the recycling of electrical & electronic equipment waste. Alternatively in some states of the European Union or other European states you may return your products to your local retailer when buying an equivalent new product. The correct disposal of this product will help save valuable natural resources and help in preventing the potential negative impact on the environment and human health, which could be caused as a result of improper liquidation of waste. Please ask your local authorities or the nearest waste collection centre for further details. The improper disposal of this type of waste may fall subject to national regulations for fines.

For business entities in the European Union

If you wish to dispose of an electrical or electronic device, request the necessary information from your seller or supplier.

Disposal in other countries outside the European Union

If you wish to dispose of this product, request the necessary information about the correct disposal method from local government departments or from your seller.



This product meets all the basic EU regulation requirements that relate to it.

Changes to the text, design and technical specifications may occur without prior notice and we reserve the right to make these changes.