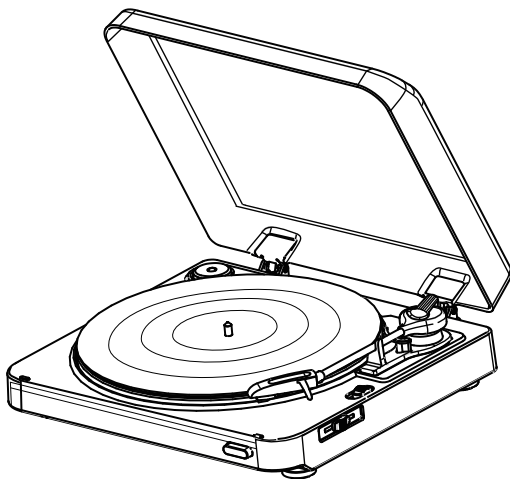


SENCOR®

STT313U

TURNTABLE
GRAMOFON
GRAMOFÓN
LEMEZJÁTSZÓ
GRAMOFON
ПРОИГРЫВАТЕЛЬ
PLOKŠTELIŲ GROTVAS



INSTRUCTION MANUAL
NÁVOD K OBSLUZE
NÁVOD NA OBSLUHU
HASZNÁLATI ÚTMUTATÓ
INSTRUKCJA OBSŁUGI
РУКОВОДСТВО ПО ЭКСПЛУАТАЦИИ
VARTOTOJO VADOVAS

EN CZ SK HU PL RU LT

CONTENT

- Safety precautions 3
- Before the first use 5
- Description of the device 5
- Before operation 6
- Connection 6
- Operation 7
- Maintenance 7
- Technical specifications 7
- AUDACITY software overview 8

SAFETY PRECAUTIONS



WARNING

DO NOT EXPOSE THE UNIT TO RAIN OR MOISTURE TO PREVENT A RISK OF FIRE OR AN ELECTRIC SHOCK.



CAUTION: TO PREVENT FIRE OR ELECTRIC SHOCK, DO NOT REMOVE THE DEVICE COVER (OR ITS BACK PART). THERE ARE NO SERVICEABLE PARTS THAT USER CAN REPAIR. REFER SERVICING TO QUALIFIED SERVICE PERSONNEL.



The lightning flash within an equilateral triangle is intended to alert the user to the presence of uninsulated „dangerous voltage“ within the unit's cabinet that may cause a risk of electric shock to persons.



The exclamation mark within an equilateral triangle is intended to alert the user to presence of important operating and maintenance instructions in the instruction manual.

CAUTION: To operate the device correctly, read the instruction manual carefully and store in a safe place for future reference. If the device needs servicing or maintenance, contact qualified personnel only.

CAUTION: In case of removing the cover, unplug the power cord from the power outlet at first.

1. Read the instruction manual

Read all instruction manual carefully after unpacking the device. Follow all operating and other instructions in the manual.

2. Power sources

This product should be operated only from the type of power source indicated on the making label. If you are not sure of the type of power supply to your home, consult your product dealer or local power company. For products intended to operate from battery power or other sources, refer to the operating instructions.

3. Ventilation

Slots and openings in the cabinet are provided for ventilation. It protects it from overheating and ensures reliable operation of the product. Do not block or cover these ventilation openings. The openings should never be blocked by placing the product on a bed, sofa, rug or other similar surface. This product should not be placed in a built-in installation such as a bookcase or rack unless proper ventilation is provided or manufacturer's instructions have been adhered to.

4. High temperatures

Do not place the device near the heating elements, stoves, fire place or other sources of heat (including amplifiers). Do not place any open flame (e.g. burning candle) on the device.

5. Water and moisture

Do not use this product near water for example near a bathtub, kitchen sink, in a wet basement, near a swimming pool and the like. Do not place any objects (e.g. vases) filled with water on the device.

6. Cleaning

Unplug this product from the wall outlet before cleaning. Do not use liquid cleaners or aerosol cleaners. Use a damp cloth for cleaning.

7. Power cord protection

Power supply cords should be routed so that they are not likely to be walked on or pinched by items placed upon or against them, paying particular attention to cords at plugs, convenience receptacles, and the point where they exit from the product.

8. Overloading

Do not overload wall outlets, extension cords, or integral convenience receptacles, as this can result in a risk of fire or electric shock.

9. Lightning

For added protection for this product during a lightning storm, or when it is left unattended and unused for long periods of time, unplug it from the wall outlet and disconnect the antenna or cable system. This will prevent from damage to the product due to lightning and power lines surges.

10. Object and liquid entry

Never push objects of any kind into this product through openings as they may touch dangerous voltage points or short-out parts that could result in a fire or electric shock. Never spill liquid of any kind on the product.

11. Plug-in

Do not use the types of connection that are not recommended by the manufacturer. Otherwise you risk a healthy or possession danger. The socket you plug the power cord to or the AC adapter, must be easily accessible.

12. Accessories

Do not place this product on an unstable cart, stand, tripod, bracket, or table. The product may fall, causing serious injury to a child or adult and serious damage to the product. Use only with a cart, stand, tripod, bracket, or table recommended by the manufacturer, or sold with the product. Any mounting of the product should follow the manufacturer's instructions, and should use a mounting accessory recommended by the manufacturer. A product and cart combination should be moved with care. Quick stop, excessive force, and uneven surface may cause the product and cart combination to overturn.

13. Loading

Do not step or place any heavy objects on the device. If such heavy object falls, it may cause an injury or damage the device.

14. Connection

If you connect the device to another device, turn off and unplug all devices. Before connecting always read carefully the connection guide and follow the instructions.

15. Volume

Before turning on, always set the volume to minimum. In case of high volume you can damage your hearing or speakers.

16. Sound distortion

Do not leave the device to produce distorted sound for a long time. It can heat the speakers up and may cause a fire.

17. Earphones

Set reasonable volume level when using the earphones. The long-term listening at excessive volume can damage hearing.

18. Records

Do not use cracked, deformed or repaired records. They can break down or cause serious injury or damage the device.

19. Damage requiring service

Unplug this product from the wall outlet and refer servicing to qualified personnel under the following conditions:

- a) when the power-supply cord or plug is damaged;
- b) if liquid has been spilled or objects have fallen into the product;
- c) if the product has been exposed to rain or water;
- d) if the product does not operate normally by following the operating instructions. Adjust only those controls that are covered by the operating instructions as an improper adjustment of other controls may result in damage and will often require extensive work by qualified technician to restore the product to its normal operation;
- e) if the product has been dropped or damaged in any way;
- f) when the product exhibits a distinct change in performance this indicates a need for service.

20. Servicing

Do not attempt to service this product yourself. As opening or removing the cover may expose you to dangerous voltage or other hazards. Refer all servicing to qualified service personnel.

21. Replacement parts

When replacement parts are required, be sure the service technician has used replacement parts specified by the manufacturer or have the same characteristics as the original part. Unauthorized substitutions may result in fire, electric shock, or other hazards.

22. Safety check

Upon completion of any service or repairs to this product, ask the service technician to perform safety checks to determine that the product is in proper operating condition.

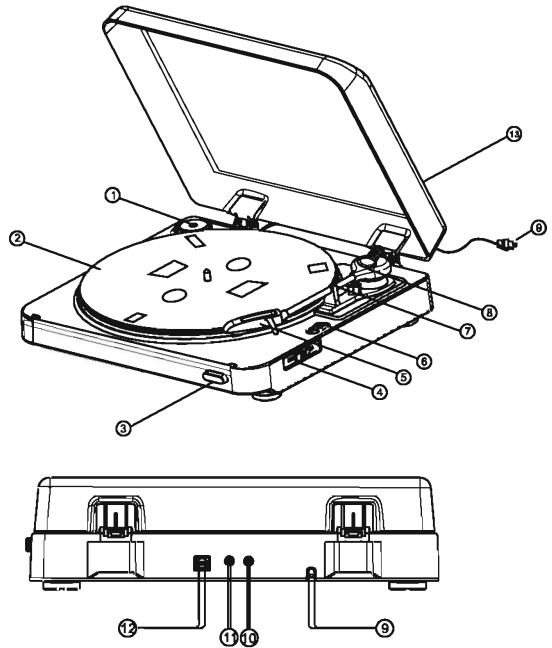
BEFORE THE FIRST USE

After unpacking, check the packaging contains the following:

Device
Instruction manual
USB cable
RCA cable
Rubber pad
45 RPM adapter

DESCRIPTION OF THE DEVICE

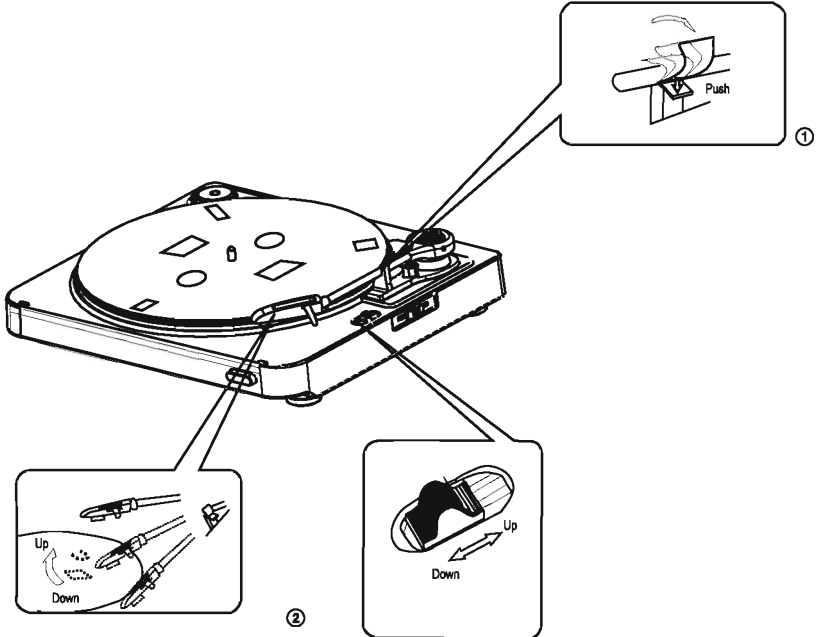
1. 45 RPM adapter
2. Turntable platter
3. STOP button
4. Speed regulator (33/45 rpm)
5. Cartridge
6. Up / down button
7. Tone arm stand
8. Tone arm
9. Power cord
10. LINE OUT (L)
11. LINE OUT (R)
12. USB port
13. Dust cover



BEFORE OPERATION

Remove any promotional stickers before using the turntable for the first time. Follow these instructions:

- Open the buckle on the tone arm (see picture 1).
- Remove the stylus cover (see picture 2).



CONNECTIONS

Before connecting the unit, read the instruction manual carefully.

Note: Ensure the device is turned off and unplugged before you make changes in connections.

1. Connect power cord plug (9) to power outlet.
2. Using RCA cable connect turntable LINE OUT (10/11) to input terminal of the external device (e.g. amplifier or receiver).

L (white) == L channel
R (red) == R channel

3. To connect to PC, use the USB port (12).

OPERATION

The tone arm will automatically return to the rest position when the record finishes.

1. Open the dust cover (13).
2. Place a record on the platter.
3. Set the speed (45 / 33) using the speed regulator (4).
4. Select „up“ using the up / down button (6).
5. Lift and place the tone arm above the record.
6. Select „down“ using the up / down button (6) and the turntable will automatically start playing.
7. Adjust the volume level on the amplifier.

Stop during playing (B)

To stop playing, press STOP button (3).

Precaution when playing records

- Do not rotate or stop the platter manually. You can risk of injury or damage the device.
- Do not stop the tone arm manually when it is returning automatically. You can damage the device.
- Do not transfer or move the unit until you secure the tone arm in the tone arm stand. Otherwise you can damage the device.
- Do not use flexible, scratched or badly warped records for playing. As these can damage the platter and the stylus.

MAINTENANCE

For cleaning, use a clean and soft cloth which you can gently damp in water. Make sure the water does not enter the device. Do not use steel-wool sponge, wire wool for cleaning as these can scratch the surface. Do not use thinners, benzene or dissolvent for cleaning the outer finish.

TECHNICAL SPECIFICATIONS

Drive system.....	belt drive
Motor	DC servo motor
Speed	33 – 1/3 and 45 rpm
Wow & flutter	0, 15% wrms
Tone arm.....	dynamic balanced type
Stylus pressure adjustment range	5g (fixed)
Cartridge.....	KTP-24
Output voltage	2, 5 mV
Optimal stylus pressure.....	5g
Power supply.....	230 V ~, 50 Hz
Power consumption	3 W
Dimensions.....	370 x 345 x 100 mm
Weight	2, 8 kg

AUDACITY SOFTWARE OVERVIEW

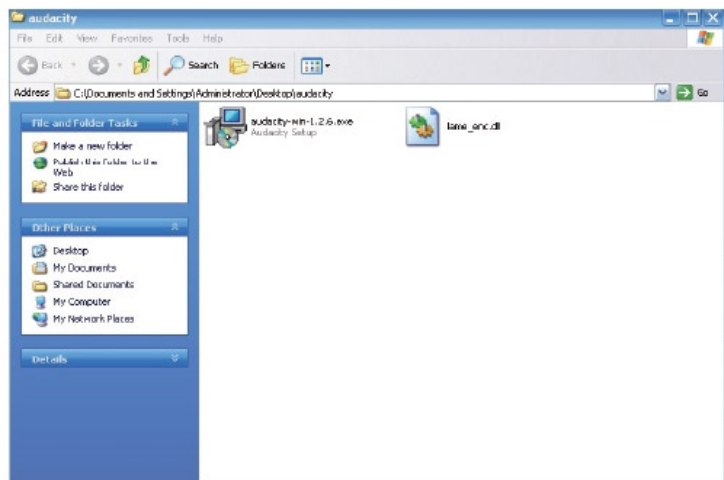
The device can connect with PC via USB Port, PC can record tracks the device is playing with audacity .

Audacity is free software, licensed under the GNU General Public License (GPL). More information can be found on the web at <http://audacity.sourceforge.net/download/>

Note: Please ensure you have installed the software before starting.

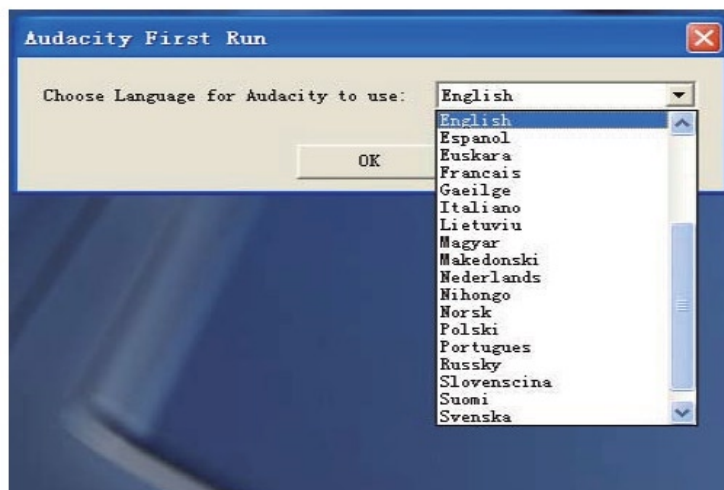
Install steps:

OPEN THE DOWNLOAD FILE TO START THE "AUDACITY".



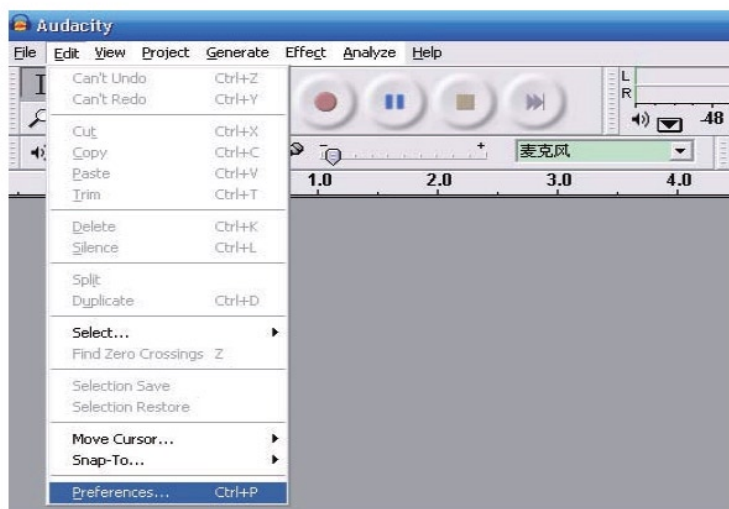
INSTALL THE SOFTWARE STEP BY STEP.

You can select the language you want if you run the software at the first time.

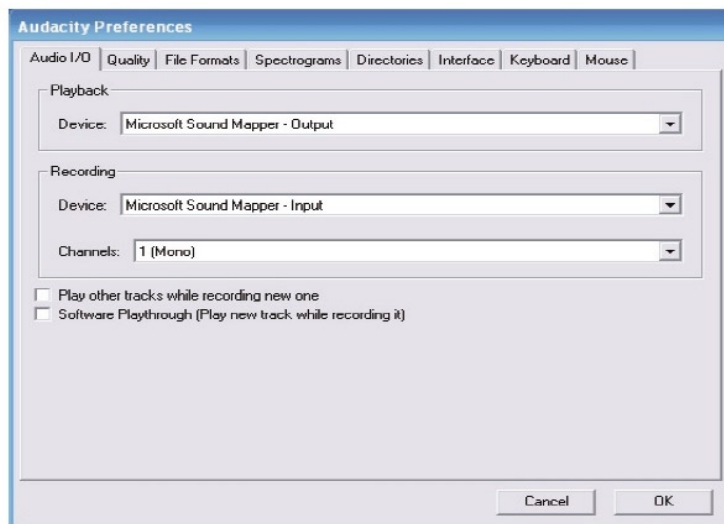


Software settings

We need some software settings after installing the software, run Audacity, Then click "Edit" -> "Preferences".



Select Audio I/O tab at the top left Channels, select 2 (stereo)



How to record

Set turntable to play the album you want to record.



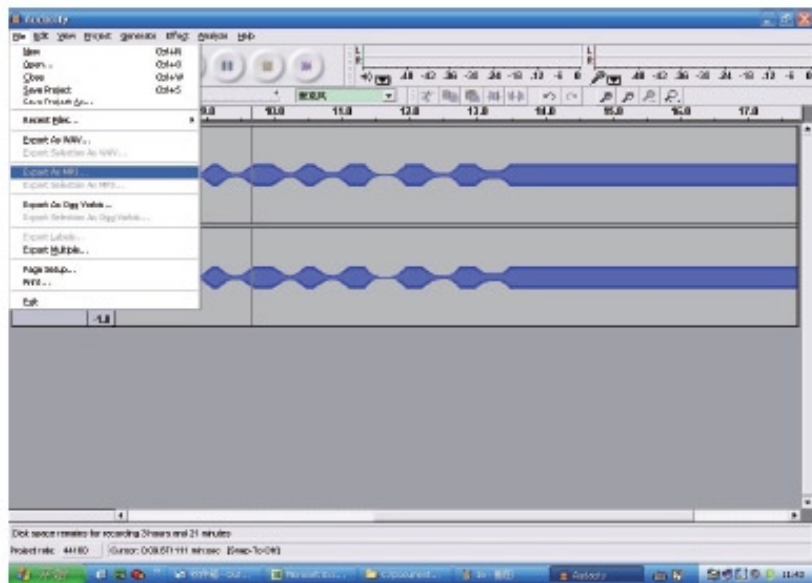
Click on the record button to begin recording.

Click on the pause button to pause the recording, press it again to continue.

Click on the stop button to finish recording.

EXPORT RECORD FILES

Run the Audacity program, Select File->Export->MP3 OR Export->WAV.



Then you can save the record file on computer.

INSTRUCTIONS AND INFORMATION REGARDING THE DISPOSAL OF USED PACKAGING MATERIALS

Dispose of packaging material at a public waste disposal site.

DISPOSAL OF USED ELECTRICAL AND ELECTRONIC APPLIANCES



The meaning of the symbol on the product, its accessory or packaging indicates that this product shall not be treated as household waste. Please, dispose of this product at your applicable collection point for the recycling of electrical & electronic equipment waste. Alternatively in some states of the European Union or other European states you may return your products to your local retailer when buying an equivalent new product. The correct disposal of this product will help save valuable natural resources and help in preventing the potential negative impact on the environment and human health, which could be caused as a result of improper liquidation of waste. Please ask your local authorities or the nearest waste collection centre for further details. The improper disposal of this type of waste may fall subject to national regulations for fines.

For business entities in the European Union

If you wish to dispose of an electrical or electronic device, request the necessary information from your seller or supplier.

Disposal in other countries outside the European Union

If you wish to dispose of this product, request the necessary information about the correct disposal method from local government departments or from your seller.



This product meets all the basic EU regulation requirements that relate to it.

Changes to the text, design and technical specifications may occur without prior notice and we reserve the right to make these changes.

