

SENCOR®

STT015

**TURNTABLE
GRAMOFON
GRAMOFÓN
LEMEZJÁTSZÓ
GRAMOFON
ПРОИГРЫВАТЕЛЬ
PLOKŠTELIŲ GROTVAS**



**INSTRUCTION MANUAL
NÁVOD K OBSLUZE
NÁVOD NA OBSLUHU
HASZNÁLATI ÚTMUTATÓ
INSTRUKCJA OBSŁUGI
РУКОВОДСТВО ПО ЭКСПЛУАТАЦИИ
VARTOTOJO VADOVAS**

EN CZ SK HU PL RU LT

CONTENTS

Device	5
Remote control transmitter	6
Precautions for use	7
Setting the clock	8
Listening to radio	8
Playback of MP3/WMA song via USB storage media or memory card	9
Phono	12
More features	13

SAFETY PRECAUTIONS



WARNING

DO NOT EXPOSE THE UNIT TO RAIN OR MOISTURE TO PREVENT A RISK OF FIRE OR AN ELECTRIC SHOCK.



CAUTION: TO PREVENT FIRE OR ELECTRIC SHOCK, DO NOT REMOVE THE DEVICE COVER (OR ITS BACK PART). THERE ARE NO SERVICEABLE PARTS THAT USER CAN REPAIR. REFER SERVICING TO QUALIFIED SERVICE PERSONNEL.



The lightning flash within an equilateral triangle is intended to alert the user to the presence of uninsulated „dangerous voltage“ within the unit's cabinet that may cause a risk of electric shock to persons.



The exclamation mark within an equilateral triangle is intended to alert the user to presence of important operating and maintenance instructions in the instruction manual.

CAUTION: To operate the device correctly, read the instruction manual carefully and store in a safe place for future reference. If the device needs servicing or maintenance, contact qualified personnel only.

CAUTION: In case of removing the cover, unplug the power cord from the power outlet at first.

1. Read the instruction manual

Read all instruction manual carefully after unpacking the device. Follow all operating and other instructions in the manual.

2. Power sources

This product should be operated only from the type of power source indicated on the making label. If you are not sure of the type of power supply to your home, consult your product dealer or local power company. For products intended to operate from battery power or other sources, refer to the operating instructions.

3. Ventilation

Slots and openings in the cabinet are provided for ventilation. It protects it from overheating and ensures reliable operation of the product. Do not block or cover these ventilation openings. The openings should never be blocked by placing the product on a bed, sofa, rug or other similar surface. This product should not be placed in a built-in installation such as a bookcase or rack unless proper ventilation is provided or manufacturer's instructions have been adhered to.

4. High temperatures

Do not place the device near the heating elements, stoves, fire place or other sources of heat (including amplifiers). Do not place any open flame (e.g. burning candle) on the device.

5. Water and moisture

Do not use this product near water for example near a bathtub, kitchen sink, in a wet basement, near a swimming pool and the like. Do not place any objects (e.g. vases) filled with water on the device.

6. Cleaning

Unplug this product from the wall outlet before cleaning. Do not use liquid cleaners or aerosol cleaners. Use a damp cloth for cleaning.

7. Power cord protection

Power supply cords should be routed so that they are not likely to be walked on or pinched by items placed upon or against them, paying particular attention to cords at plugs, convenience receptacles, and the point where they exit from the product.

8. Overloading

Do not overload wall outlets, extension cords, or integral convenience receptacles, as this can result in a risk of fire or electric shock.

9. Lightning

For added protection for this product during a lightning storm, or when it is left unattended and unused for long periods of time, unplug it from the wall outlet and disconnect the antenna or cable system. This will prevent from damage to the product due to lightning and power lines surges.

10. Object and liquid entry

Never push objects of any kind into this product through openings as they may touch dangerous voltage points or short-out parts that could result in a fire or electric shock. Never spill liquid of any kind on the product.

11. Plug-in

Do not use the types of connection that are not recommended by the manufacturer. Otherwise you risk a healthy or possession danger. The socket you plug the power cord to or the AC adapter, must be easily accessible.

12. Accessories

Do not place this product on an unstable cart, stand, tripod, bracket, or table. The product may fall, causing serious injury to a child or adult and serious damage to the product. Use only with a cart, stand, tripod, bracket, or table recommended by the manufacturer, or sold with the product. Any mounting of the product should follow the manufacturer's instructions, and should use a mounting accessory recommended by the manufacturer. A product and cart combination should be moved with care. Quick stop, excessive force, and uneven surface may cause the product and cart combination to overturn.

13. Loading

Do not step or place any heavy objects on the device. If such heavy object falls, it may cause an injury or damage the device.

14. Connection

If you connect the device to another device, turn off and unplug all devices. Before connecting always read carefully the connection guide and follow the instructions.

15. Volume

Before turning on, always set the volume to minimum. In case of high volume you can damage your hearing or speakers.

16. Sound distortion

Do not leave the device to produce distorted sound for a long time. It can heat the speakers up and may cause a fire.

17. Earphones

Set reasonable volume level when using the earphones. The long-term listening at excessive volume can damage hearing.

18. Records

Do not use cracked, deformed or repaired records. They can break down or cause serious injury or damage the device.

19. Damage requiring service

Unplug this product from the wall outlet and refer servicing to qualified personnel under the following conditions:

- a) when the power-supply cord or plug is damaged;
- b) if liquid has been spilled or objects have fallen into the product;
- c) if the product has been exposed to rain or water;
- d) if the product does not operate normally by following the operating instructions. Adjust only those controls that are covered by the operating instructions as an improper adjustment of other controls may result in damage and will often require extensive work by qualified technician to restore the product to its normal operation;
- e) if the product has been dropped or damaged in any way;
- f) when the product exhibits a distinct change in performance this indicates a need for service.

20. Servicing

Do not attempt to service this product yourself. As opening or removing the cover may expose you to dangerous voltage or other hazards. Refer all servicing to qualified service personnel.

21. Replacement parts

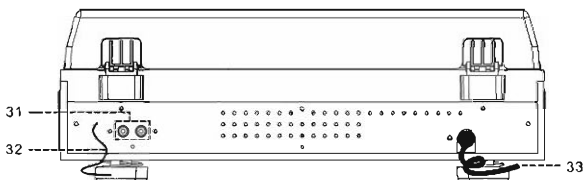
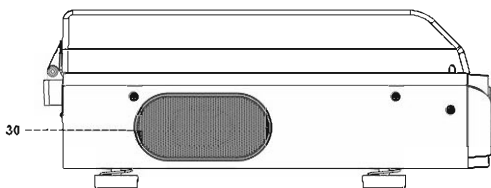
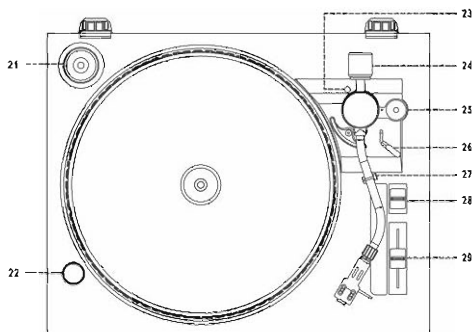
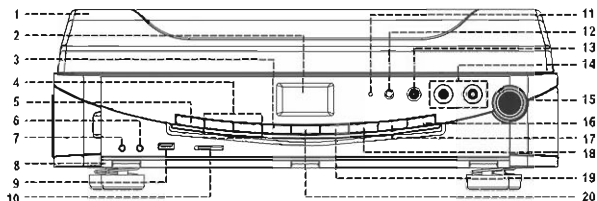
When replacement parts are required, be sure the service technician has used replacement parts specified by the manufacturer or have the same characteristics as the original part. Unauthorized substitutions may result in fire, electric shock, or other hazards.

22. Safety check

Upon completion of any service or repairs to this product, ask the service technician to perform safety checks to determine that the product is in proper operating condition.

DEVICE

- 1) Dust cover
- 2) LCD display
- 3) STOP ■ /BAND button
- 4) TUNING/SKIP up ►► /down ◀◀ button
- 5) ● REC (record) button
- 6) 3.5mm AUX IN jack
- 7) 3.5mm Headphone jack
- 8) Panel cover
- 9) USB socket
- 10) SD/MMC card slot
- 11) Standby LED indicator
- 12) Remote sensor
- 13) POWER ON/STANDBY button
- 14) VOLUME up/down button
- 15) EJECT button
- 16) FUNCTION button
- 17) PRESET EQ button
- 18) MEMORY/CLOCK-ADJUST button
- 19) FOLDER/PRE-up button ▲
- 20) ST-MONO/PLAY/PAUSE ►►|| button
- 21) Spindle adaptor
- 22) Strobe illuminator
- 23) Alignment screw with rubber cover
- 24) Counter weight
- 25) Anti skating
- 26) Cueing lever
- 27) Tone-arm lock
- 28) Turntable speed selector
- 29) Pitch adjustment
- 30) Internal speaker
- 31) LINE OUT socket (L/R)
- 32) FM antenna
- 33) AC cord



CAUTION

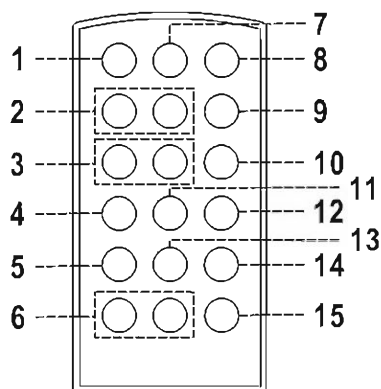
- Usage of controls or adjustments or performance of procedures other than those specified herein may result in hazardous radiation exposure.
- This unit should not be adjusted or repaired by anyone except qualified service personnel.

REMOTE CONTROL TRANSMITTER

Battery Installation

(battery not provided)

The infra-red transmitter require 2 pc AAA size battery for operation – when inserting batteries into the remote control, keep their polarity. When the effective range of the remote control is reduced, change both batteries.



Button description

- | | |
|-------------------------------|--|
| 1. ON/STANDBY | Press to switch on/standby the system |
| 2. TUNING/SKIP up ►►/ down ◄◄ | In MP3/WMA mode: to select previous / next track
In tuner mode: press to step up/down of frequency |
| 3. FOLDER/PRE-down ▼
-up ▲ | In MP3/SD mode: press to skip down-up the album
In tuner mode: press to call down the preset memory |
| 4. REP/INTRO/RAN | Select different playing mode during playback USB/SD |
| 5. FIND / T | In USB/SD playing mode: press to active song search function
In encoding mode: press to active track separation function |
| 6. VOLUME +/- | Press to adjust volume level up/ down |
| 7. FUNCTION | Press to select the functions |
| 8. ● REC | In REC mode: Press to active encoding/mp3 file copy function. |
| 9. PLAY/PAUSE (▶) | In FM mode: press to select Mono/Stereo
In USB/SD mode: press once to start playback. Press once again to stop playback temporarily |
| 10. STOP (■) | In FM mode: press to select tuner band
In USB/SD mode: press to stop playback or cancel programmed memory |
| 11. DISPLAY | At power on: press to display current time |
| 12. MEMORY/CLK-ADJ | In USB/SD mode: press to active program function
In Tuner mode: press to active preset station mode
In standby mode: press to adjust clock setting |
| 13. DEL/INFO | In USB/SD mode: press to delete the file in the USB/SD memory
In MP3 playback mode: press to active ID3 function |
| 14. SLEEP/TIMER | In power on mode: press to active sleep function
In standby mode: press and hold to enter timer set up mode and press once to active/de-active timer function |
| 15. PRESET EQ | Press to select difference EQ mode for enjoyment |

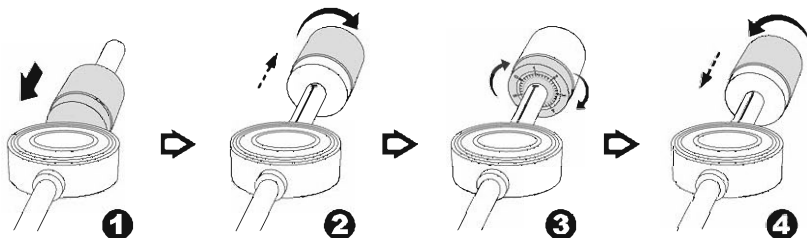
PRECAUTIONS FOR USE

Installation

- After unpacking the device from the shipping carton, check:
 - If the device is not damaged;
 - Completeness of the supplied accessories.In case of possible shortcomings, contact the vendor.
Dispose of the packing material according to local regulations.
- Do not connect the unit to the mains before checking the mains voltage and before all other connections have been made.
- Do not cover any vents and make sure that there is a space of several centimeters around the unit for ventilation.

Installation of counter weight

The turntable of this device is a precise product and allows an exact setting of the weight acting on the needle at the tip of the tone arm as demanded by its manufacturer. The correct setting will assist in the optimal use of the record player's properties and it will minimize wear and tear of the records. To set the tone arm counterweight, follow these instructions.



1. Slide in the counter weight completely into the rear of the tone arm until it reach the end, turn it clockwise until it click with pit inside.
2. Twist the counter weight clockwise & backward until it reach the white line as figure 2.
3. Twist the counter marking until it reach "1" position.
4. Twist the counter weight anti-clockwise & inward until it reach the appropriate working pressure.

REMARK

The working pressure of the provided stylus is from the range 4 – 6 grams. According to the cartridge manufacturer. All stylus has its own working pressure and please refer to the specification respectively.

Connection

Connecting LINE OUT

Connect using the stereo cable with audio connectors RCA (sold separately) to RCA LINE OUT (L/R) external component to process a stereo audio signal output from the device (e. g. amplifier)

Connecting headphones

Insert the headphones stereo cable into the jack marked as PHONES (diameter 3,5 mm). The built-in speakers will switch off when the headphones are connected.

WARNING

Do not use headphones set to high volume – long- term use of headphones set to high volume may result in hearing damage and loss.

Connecting the device to main power

1. Connect the power cord (33) to ac outlet.
2. Press the **POWER ON/STANDBY** button (13) and if standby LED Indicator (11) light off, it's mean the power supply is normal. Now your system is ready to play the music.

SETTING THE CLOCK

1. Set unit in standby mode.
2. Press the **MEM/CLK-ADJ** button (18) twice, the LCD display (2) will show 12HR24HR.
3. Press **TUNING/SKIP** **◀◀** or **SKIP ▶▶** button (4) to select the appropriate area hour format (12hr or 24hr) and selected format will flash.
Press **MEM/CLK-ADJ** button (18) again to confirm.
4. The LCD (2) will display the first & second digit of "00" is flashing. Press **TUNING/SKIP** **◀◀** or **SKIP ▶▶** button (4) to set the correct hour.
Press **MEM/CLK-ADJ** button (18) to store the correct hour.
5. The third & fourth digit of "00" is flashing, press the **TUNING/SKIP** **◀◀** or **SKIP ▶▶** button (4) to set the correct minutes. Then press **MEM/CLK-ADJ** (18) to store the correct minute.

REMARKS

- The pre-set time will be re-set completely if disconnecting the main power supply. You are recommended to switch the system into standby mode for convenience usage.
- The clock setting mode will be quit automatically if 5 second being no pressing any button in a period about 5 second.

LISTENING TO RADIO

Manual tuning

1. Press the **POWER ON/STANDBY** button (13) to turn on the unit.
2. Press **FUNCTION** button (16) to select tuner mode.
3. Press **STOP** **■**/BAND button (3) to select desired band (MW or FM).
4. Tune to the required station by pressing the **TUNING/SKIP** up **▶▶** or down **◀◀** (4) button.
5. Adjust **VOLUME** control (14) to the desired volume level.

Auto tuning

1. Press the **POWER ON/STANDBY** button (13) to turn on the unit.
2. Press **FUNCTION** button (16) to select tuner mode.
3. Press **STOP** **■**/BAND button (3) to select desired band (MW or FM).
4. Press and hold the **TUNING/SKIP** up **▶▶** or down **◀◀** (4) button for 1-2 seconds and then release.
5. The unit will start seeking automatically and stop until a radio station is reached.
6. Repeat step 3 & 4 until the desired radio station is being reached.
7. Adjust **VOLUME** up/down controls (14) to the desired volume level.

Preset stations

You can store up to total of 50 radio stations (30 FM, 20 AM) in the memory.

Presetting a radio station

1. Set to tuner mode
2. Turn to the desired radio station by "Manual" or "Auto" tuning method.
3. Press **MEM/CLK-ADJ** button (18) to enable program state.
4. Press **FOLDER/PRE-up** **▲** (19) or **FOLDER/PRE-down** **▼** button (at remote handset) to select the desired station memory position for storage.
5. Press **MEM/CLK-ADJ** button (18) again to confirm the setting.
6. Repeat step 2 to 5 to store other stations. You can overwrite a preset station by storing another frequency in its place.

Recall of preset radio station

1. Press **FOLDER/PRE-up** **▲** or down **▼** button at remote handset to select the desired preset stations.
2. To return normal tuner mode, leave keys free.

CAUTION

The pre-set memories will be cancelled completely if disconnect the main plug. You are recommended to switch the system into standby mode for convenience usage.

FM & FM-stereo reception

- Press the **ST/MONO** **▶▶** button (20) repeatedly, the FM programs are receiving in mono and stereo mode repeatedly. In particular when stereo signals are weak. It is preferable to receive the program in mono.
- If stereo signal is being received, the indicator "**(ST)**" will appear on LCD display (2) to show FM stereo program is now receiving.

Hints for best reception

- AM: The receiver has a build-in am bar antenna. If AM reception is weak, slight rotate or re-positioning of the unit will usually improve the AM reception.
- FM: the receiver has a build-in FM wire antenna (32) hanging at the rear cabinet. This wire should be totally unraveled and extended for the best reception.

PLAYBACK OF MP3/WMA SONG VIA USB STORAGE MEDIA OR MEMORY CARD

The system is able to decode and playback all MP3 /WMA file which stored in the memory media with USB connecting port or SD/MMC memory card.

1. Set the system at standby mode first or other function except SD or USB mode.
2. Plug-in the USB pen-drive with the face up & make sure it going into completely or insert the memory card in the direction of the arrow as shown in the label on the upper side of the memory card slot. Insert straight without bending.
3. Press **FUNCTIONS** button (16) to select "CARD" mode or "USB" mode.

Connecting the USB upside down or backwards could damage the audio system or the storage media (USB thumb drive / SD/ MMC card). Check to be sure the direction is correct before connection.

The system will start reading the storage media automatically after connecting, and LCD display (2) will show the total number of MP3/WMA files being detected then it will start to play from first automatically.

Play / pause mode ►||

1. To interrupt, press the **ST/MONO/►||** button (20) once, and the playing time will be freeze & flashing on the LCD display (2). Press again to resume normal playback.

Stop mode ■

1. If **STOP ■** button (3) is pressed during play or pause mode, system will go to stop mode.

Skip mode (TUNING/SKIP up ►►| / SKIP down |◄◄)

1. During play or pause mode, if **SKIP up ►►|** button (4) is pressed. It will go to next track and display the track no. and then remain the play or pause mode.
 2. During play or pause mode, if **SKIP down |◄◄** button (4) is pressed. It will go back to the beginning of the track, original track no. is display and remain the play or pause mode.
 3. After step 2, press **SKIP down |◄◄** button (4) again will go to the previous track and remain the play or pause mode.
- Press and hold **TUNING/SKIP (►►|/|◄◄)** for longer than 2 seconds during playback to increase the playback speed (searching in the recording - reading the displayed data). During search, the system is muted. The playback will continue from the found point in the recording when you release the button.

REMARK

- USB port does not support connection with USB extension cable and is not designed for communication with computer directly and any battery charging.
- If connect the system to MP3 player via the USB socket, due to variances in MP3 encoding format, some MP3 player may not be able to play via the USB socket. This is not a malfunction of the system.

ID3 (track/album title) function (by remote handset)

Press the **INFO** button until the LCD display (2) show "--" during playback of MP3/WMA file, the song title / artist name / album name is being displayed in sequence. Press the **INFO** button again to disable the function.

REMARK

- In that case of no name had been assigned for the track, "UNKNOWN" is being displayed" on LCD display (2).
- No Title/Album name can be recognized if the input format on the mass media is not supporting by the system.
- The system support only English and numeral for ID3 function

Song title/folder name search function

(by remote handset)

You can search the track by the title/folder name in disc during stop or playback mode:

1. Press the **FIND** button once, then press the **SKIP up ►►|** or **SKIP down |◄◄** button (4), you can search the title of each song one by one under alphabet order & the number (a to z & then 0 to 9) order on LCD display (2), then press the **ST/MONO/►||** button (20) to start the playback of the selected track.
2. Press again **FIND** button, the folder name is being displayed. Then press the **SKIP up ►►|** or **SKIP down |◄◄** button (4), to select the desired folder, and press the **ST/MONO/►||** button (20) to start the playback of all tracks inside that selected folder.

MP3/WMA track format requirement

- MP3 bit rate : 32 kbps-256 kbps and WMA bit rate : 32 kbps ~ 320 kbps
- The performance of playing MP3 file is various from the quality of recording disc and the method of recording.
- Assessment of the recording and search in the recording containing MP3/WMA files requires sometimes slightly longer period of time due to a different format of the recordings.

Repeat/Intro/Random play

Press the REP/INTRO/RAN button (on the remote only) during playback to select repeat, intro and random function can be played in difference mode as follow:



Indicator on LCD display	Play mode	
	Repeat single track	You can listen the desired tracks, folder or all tracks repeatedly by this function.
	Repeat all tracks	
	Repeat single folder	
INTRO	Intro play	You can listen the first 10 seconds of each track by this function.
RAN	Random mode	You can listen all the tracks in a random order by this function.
—	Off mode	

Tracks programming

Up to 32 tracks can be programmed for MP3/WMA tracks playing in any order. Before use, be sure the unit at stop mode.

1. Press the MEM/CLK-ADJ button (18), "MEMORY" will appear on LCD display (2). Moreover, it will flash with program no. and indicate digits for track no. to be programmed – "P-01 001".
2. Select a desired track by pressing TUNING/SKIP up ►►1 or down 1◄◄ buttons (4). Press the FOLDER/PRE-up ▲ button (19) can select the 1st track of next folder directly and hence to speed up the song selection.
3. Press the MEM/CLK-ADJ button (18) to store the track into memory.
4. Repeat steps 2 and 3 to enter additional tracks into the memory if necessary.
5. After program complete, press MEM/CLK-ADJ button (18) repeatedly to review the tracks being programmed.
6. When all the desired tracks have been programmed, press ST/MONO►►111 button (20) to play the tracks assigned order. The program playback will end with playing the last programmed file.
7. Press STOP ■ button (3) to terminate program play. Press STOP ■ button (3) at stop mode to cancel all programmed memory.

Encoding into MP3 file to USB memory

The system is able to encode turntable, tuner or Aux in to MP3 format and recording at memory media with USB connecting port or SD/MMC card slot. Before starting the encoding, please insert the memory media (USB pen drive) to the system & make sure it had adequate free memory size for recording.

Phono encoding

Insert SD or MMC memory card into the device, place the record on the turntable and follow these instructions:

1. Select "PHONO" mode by FUNCTION button (16) and then press the ● REC button (5) directly.
2. The LCD display (2) with show "CHECK" a second then & "REC" icon are flashing.
3. The transfer of music from the record to MP3 format will start with a few seconds delay.
4. Start playback at phono for the track which you want to record to USB position.
5. After finish of recoding, press the STOP ■ button (3) then the & "REC" icon disappear on LCD display.

Radio encoding

1. Select tuner mode and then select the desire radio station.
2. Press the ● REC button (5) to start the encoding.
3. The LCD display (2) with show "CHECK" a second then & "REC" are flashing. Now the system is starting the recording.
4. After finish of recoding, press the STOP ■ button (3) then the & "REC" icon disappear on LCD display.

Aux-in encoding

Connect one end of this cord to the 3.5mm dia. headphone jack on the external device and the other end to the 3.5mm Aux-in jack (6) on the side of the unit.

REMARK

- When encode from Phono, Tuner or Aux mode and both memory media (USB pen drive and SD card) inserted to the unit, the system will ask encode to which media and "USB" will flash and "CARD" appear on LCD(2) display, press SKIP up ►►1 or SKIP down 1◄◄ button (4) to select the media for encoding then press ● REC button (5) again to start encode.

Copying of MP3/WMA file

The system allow to copy the file from USB to SD or SD to USB by 1 files or all files. Below explanation was copy file from USB to SD card. The system will create a "copy" folder and store the copy track inside.

Copy 1 track

1. Insert both media (USB pen and SD) then select to USB mode by **FUNCTION** button (16).
2. Playback the copying track then press **REC** button (5) display will flashing "CARD" & "**REC**" icon, copy mode is performing now and audio output will muted during copy file.
3. After completed of copy, the display will disappear "CARD" & "**REC**" icon and return to normal.

Copy all track

1. Insert both media (USB pen and SD) then select to USB mode by **FUNCTION** button (16) and keep in stop mode.
2. Press **REC** button (5) display will flashing "CARD" & "**REC**" icon, copy mode is performing now.
3. After completed of copy, the display will disappear "CARD" & "**REC**" icon and return to normal.

REMARK

- If copy file from SD to USB, just select the mode to SD by **FUNCTION** button (16). The other procedure were same as above.
- To start copying files from the played medium to another medium immediately, press **REC** on the remote control during playback.

Track separation (by remote handset)

You can divide the recording music from Phono or Aux to USB/SD track by track during encoding. Every time when press the "**TB**" (track separation) button once at remote handset during encoding from Phono, Aux or Tuner to USB/SD, the system will generate a new track and continuous the recording. The text "PHONO" or "AUX" at LCD display (2) will flashing one time, it mean the unit is creating a new track successfully.

Encoding bit rate (by remote handset)

You can select the desired bit rate before encoding to USB or SD, the selectable range from 32 / 64 / 96 / 128 / 192 / 256 kbps.

1. Set In "Phono" or "Aux" by **FUNCTION** button (16) & remain stop mode.
2. Press the **INFO** function and the LCD display will show the defaulted bit rate (128 kbps).
3. Press **TUNING/SKIP** forward **▶▶▶** or **◀◀◀** buttons (4) to select the desired bit rate for encoding.
4. Press again the **INFO** button to confirm the setting and the LCD display (21) resume to normal.

File delete at USB / SD card (by remote control)

The system is able to erase the file stored inside the USB pen drive or SD card by following. Press **STOP** **■** button (3) once at remote handset to quite delete mode.

Single file delete (by remote handset)

1. Preset at "USB" or "SD" mode.
2. Press and hold the **DEL/INFO** button a while, the LCD display (2) will show "DEL 001".
3. Press **TUNING/SKIP** forward **▶▶▶** or **SKIP** backward **◀◀◀** button to select the file going to delete.
4. Press the **REC** button to enter "YES/NO" mode and then press **SKIP** forward **▶▶▶** or **SKIP** backward **◀◀◀** to select "YES".
5. Press the **REC** button again to confirm the delete.

All files delete

1. Press and hold the **DEL/INFO** button a while, the LCD display (2) will show "DEL 001".
2. Press and hold the **INFO** button again LCD display (2) will show "FORMAT 7N", then press **SKIP** forward **▶▶▶** or **SKIP** backward **◀◀◀** (4) button to select "FORMAT 7Y".
3. Press the **REC** button to confirm the all delete, display will show "FORMAT".
4. After completed the deleting, will show "NO FILE".

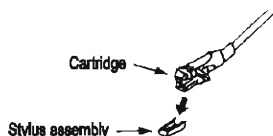
Removing of USB / memory card

- To remove the USB / memory card, turn off the power or switch the function mode to either, phono or tuner first. For USB port – un-plug it by pulling out the USB socket directly, for memory card – pulling out the SD card smoothly.

PHONO

Before using the record player, do the following:

- Remove the stylus protector.
- Be sure that the tone arm is being detached from the tone arm rest before operating and re-secured again afterwards.



Operation:

1. Press **FUNCTION** button (16) to select "PHONO" mode.
The LCD display (2) will show "PHONO".
2. Set the speed selector (28) to the proper position depending on the record to be played.
3. Place the record on the platter (use the spindle adaptor if required).
4. Set the cueing lever (26) to the up position. Lift the tone arm from the rest and slowly move it to the record side. The platter will start to rotate and locate the tone arm over the desired position of the record.
5. Pull down the cueing lever (26). The tone arm will come slowly on the recorder and start playback.
6. Set desired volume.
7. At the end of record, the tone arm will return to the rest position automatically.
8. Press the **EJECT** button to finish the record playback before playing the entire recording.

Play suspension

Set the cueing lever (26) to the up position will lift up the tone arm to stop playback temporarily.

Play ejection

Press the **EJECT** button (15) anytime during playback will return the tone arm to the rest position immediately.

Adjustments

Anti-skating control

The anti-skating control (25) is made the stylus more stable and this relative to the different type of vinyl, thus, just set it to the comfortable position as you desired.

Platter speed alignment

- During playback of record, observe the appropriate strip of strobe calibration dots from the strobe lens. The upper one is for 33 rpm and the middle one is for 45 rpm.
- If the strobe dots appear to flowing to the right, it means the platter is revolving slower than rated speed. Turn the pitch control (29) to the "+" direction.
- If the strobe dots appear to flowing to the left, it means the platter is revolving faster than rated speed. Turn the pitch control (29) to the "-" direction.
- Adjust the pitch control (29) until the strobe dots do appear to be stationary without moving left or right.

Tone arm stopping position alignment

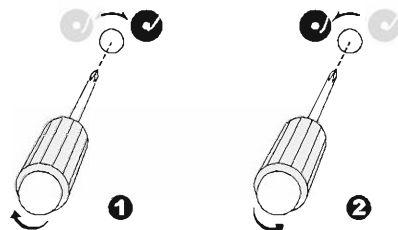
The position of the tone arm complete playback and return to the rest station can be adjusted at the alignment screw (23) as follow. Before starting the alignment, please take out the hole covering rubber.

If the system cannot complete the playback of record and return earlier

Use a cross head screw driver and turning the alignment screw (23) inside the hole clockwise, the stopping and eject position of the tone arm will move more inward to the center of the record before playback completion.

If the system cannot return to rest position automatically after playback of record

Use a cross head screw driver and turning the alignment screw (23) inside the hole anti-clockwise, the stopping and eject position of the tone arm will move more away from the center of the record before playback completion.



REMARKS

- The stopping position is very subjective among different customers, please select the most suitable position based on your own record collection. The ex-factory setting is based on the most common template.
- Please check the stopping position time by time during adjustment and avoid over turning of the screw inside.

MORE FEATURES

LINE OUT (L/R) connection

You can connect the system to your whole hi-fi system by connecting the line out socket (31) to the auxiliary input socket with a RCA cable (not provided).

Sleep setting (by remote control)

1. Press **SLEEP** button during on mode and "SLEEP" icon will flash on the LCD display (2).
2. Keep pressing the button to adjust the sleep timer in the order of 90 > 80 > 70...10 minutes.
3. System will stop and go to standby mode automatically after the selected timing.
4. To cancel the sleep mode, press **SLEEP** button until it reach "OFF" mode.

REMARK

If press the sleep button once and the sleep icon "SLEEP" flash on the LCD display (2), the system will go to standby mode automatically after the selected minutes.

Timer setting (by remote control)

The device allows to set automatic turning on and starting playback of a preset signal source and switching to standby mode in preset times. Set timer:

1. Set the unit at standby mode.
2. Press and hold **TIMER** button a while, the display will show "ON TIME" a second then 0:00 will show and hour digit was flash on LCD display (2).
3. Press **TUNING/SKIP** up **▶▶▶** or down **◀◀◀** to select the hour then press **TIMER** to confirm. Now the minute digit was flashing on display.
4. Press **TUNING/SKIP** up **▶▶▶** or down **◀◀◀** to select the minute and press **TIMER** again to confirm Timer on time. Now the Timer wake up mode flash on display.
5. Press **FUNCTION** button to select the wake up mode between Tuner, USB, CARD, press **Timer** button again to confirm the wake up mode.
6. Then, wake up volume will flash on display, press **VOLUME** up/down button to adjust the wake up volume level and press **TIMER** again to confirm.
7. The display will show "OFF TIME" a second then 0:00 will show and hour digit was flash on LCD display (2), press **TUNING/SKIP** up **▶▶▶** or down **◀◀◀** to select the hour then press **TIMER** to confirm.
8. Now the minute digit was flashing on display, press **TUNING/SKIP** up **▶▶▶** or down **◀◀◀** to select the minute and press **TIMER** again to confirm Timer off time and complete timer function setting.

NOTES:

- Them unit will switch on automatically once arrive the preset timer on time.
- If there is no music source being detected (such as USB/SD) when the preset time is reached, system will default to tuner mode automatically.
- For tuner wakes up, the system will preset at the latest radio frequency being listened before switching off.
- Switch off the system manually anytime during timer wake up mode or system will switch off automatically when arrive the preset timer off time.

Active/de-active timer function

- To active the timer, press once the **TIMER** button on remote handset until the timer indicator "⌚" is shown on LCD display (2) and all the previous setting will review once through the LCD display (2).
- To cancel timer function by press once again **TIMER** button until the timer indicator "⌚" disappear.

Pre-set EQ function (by remote control)

This unit provides 4 differences sound mode to enhance your listening experience. You can select the desired effect by pressing the **PRESET EQ** button repeatedly at following sequence:

FLAT → CLASSIC → ROCK → POP → JAZZ
↑

Select **FLAT** to switch off the equalizer.

Display function (by remote handset)

Press **DISPLAY** to indicate the current time when the systems is operating by any mode of all functions.

INSTRUCTIONS FOR THE CORRECT DISPOSAL OF THE PRODUCT

Instructions and information regarding the disposal of used packaging materials

Dispose of packaging material at a public waste disposal site.

Disposal of used electrical and electronic appliances



The meaning of the symbol on the product, its accessory or packaging indicates that this product shall not be treated as household waste. Please, dispose of this product at your applicable collection point for the recycling of electrical & electronic equipment waste. Alternatively in some states of the European Union or other European states you may return your products to your local retailer when buying an equivalent new product.

The correct disposal of this product will help save valuable natural resources and help in preventing the potential negative impact on the environment and human health, which could be caused as a result of improper liquidation of waste. Please ask your local authorities or the nearest waste collection centre for further details. The improper disposal of this type of waste may fall subject to national regulations for fines.

For business entities in the European Union

If you wish to dispose of an electrical or electronic device, request the necessary information from your seller or supplier.

Disposal in other countries outside the European Union

If you wish to dispose of this product, request the necessary information about the correct disposal method from local government departments or from your seller.



This appliance complies with EU rules and regulations regarding electromagnetic and electrical safety.

Changes to the text, design and technical specifications may occur without prior notice and we reserve the right to make these changes.