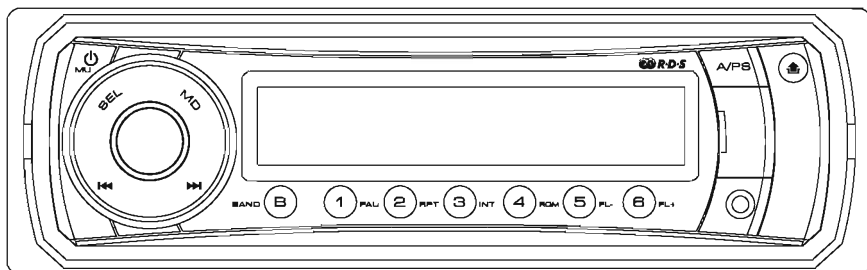


SENCOR®

SCT-3014MR

**INSTRUCTION MANUAL
NÁVOD K OBSLUZE
NÁVOD NA OBSLUHU
HASZNÁLATI ÚTMUTATÓ
INSTRUKCJA OBSŁUGI
РУКОВОДСТВО ПО ЭКСПЛУАТАЦИИ
NAUDOTOJO VADOVAS**



CAR STEREO MP3/WMA PLAYER WITH PLL FM STEREO RADIO RDS
USB / SD/MMC / FRONT AUX INPUT DETACHABLE FRONT PANEL

STEREO AUTORÁDIO S MP3/WMA PŘEHRÁVAČEM, PLL LADĚNÍM, RDS,
USB / SD/MMC / PŘEDNÍM VSTUPEM AUX A ODNÍMATELNÝM ČELNÍM PANELEM

STEREO AUTORÁDIO S MP3/WMA PREHRÁVAČOM, PLL LADENÍM, RDS,
USB / SD/MMC / PREDNÝM VSTUPOM AUX A ODNÍMATELNÝM ČELNÝM PANELOM

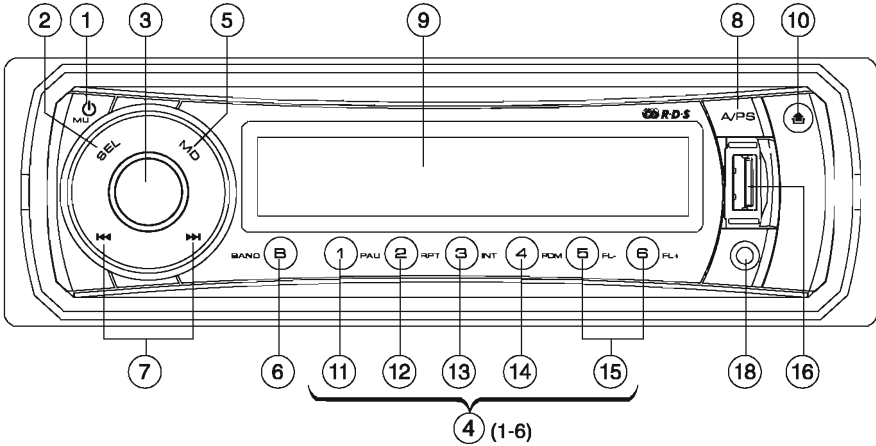
SZTEREO AUTÓRÁDIÓ MP3/WMA LEJÁTSZÓVAL, PLL HANGOLÁSSAL, RDS,
USB / SD/MMC / ELŐLSŐ AUX BEMENETTEL ÉS LEVEHETŐ ELŐLAPPAL

SAMOCZODOWE RADIO STEREO Z ODTWARZACZEM MP3/WMA, FUNKCJA PLL, RDS,
USB / SD/MMC / PRZEDNIM WEJŚCIEM AUX ORAZ ZDEJMOWANYM PANELEM PRZEDNIM

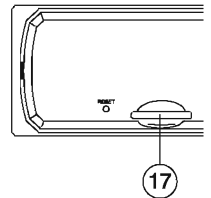
АВТОМОБИЛЬНЫЙ СТЕРЕО MP3/WMA ПЛЕЕР С PLL FM СТЕРЕО РАДИО RDS
USB / SD/MMC / AUX ВХОД НА ПЕРЕДНЕЙ ПАНЕЛИ СЪЕМНАЯ ПЕРЕДНЯЯ ПАНЕЛЬ

AUTOMAGNETOLA SU MP3/WMA GROTVU IR PLL FM STEREOFONINIŲ RADIJŲ RDS USB / SD/MMC /
PRIEKINIS PAGALBINIS ĮVADAS NUIMAMAS PRIEKINIS SKYDELIS

LOCATIONS OF CONTROLS



1. POWER ON/OFF (⏻) / MUTE (MU)
2. FUNCTION SELECT BUTTON: BASS/TREBLE/BALANCE/FADER / TA SEEK/MASK DPI/ RETUNE/AUDIO DSP/LOUDNESS/SCROLL/BEEP/STEREO/LOCAL/ AF/TA/PTY/DISP (SEL)
3. VOL UP/VOL DOWN FOR BASS/TREBLE/BALANCE/FADER / TA SEEK/MASK DPI/ AUDIO DSP/LOUDNESS/SCROLL/BEEP/STEREO/LOCAL/ AF/TA/PTY/DISP
4. PRESET STATIONS (1, 2, 3, 4, 5, 6)
5. MODE BUTTON (MD)
6. BAND BUTTON (BAND)
7. AUTOMATIC OR MANUAL TUNING (FREQ UP ►► OR FREQ DOWN ◄◄ / TRACK/SEARCH BUTTON)
8. AUTO SEEK SEARCH TUNING (A/PS)
9. LCD DISPLAY
10. PANEL RELEASE BUTTON (🔒)
11. PAUSE BUTTON (PAU)
12. REPEAT BUTTON (RPT)
13. INTRO BUTTON (Preview all Tracks) (INT)
14. RANDOM BUTTON (RDM)
15. SEARCH PREVIOUS / NEXT FOLDER (FL- / FL+)
16. USB PORT
17. SD CARD / MULTI-MEDIA CARD (MMC) SLOT
18. AUX IN



INSTALLATION

PRECAUTIONS

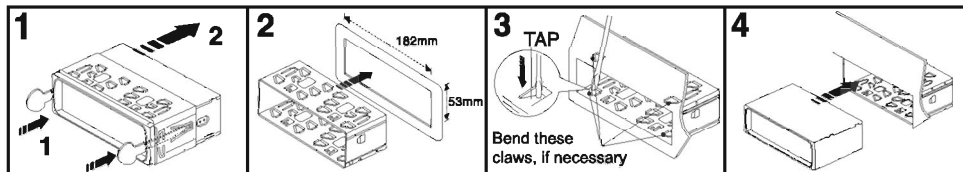
- Choose the mounting location carefully so that the unit will not interfere with the normal driving functions of the driver.
- Avoid installing the unit where it would be subject to high temperatures, such as from direct sunlight or where it would be subject to dust, dirt or excessive vibration.
- Use only the supplied mounting hardware for a safe and secure installation.
- Be sure to remove the front panel before installing the unit.

Mounting angle adjustment

Adjust the mounting angle to less than 20°.

MOUNTING EXAMPLE

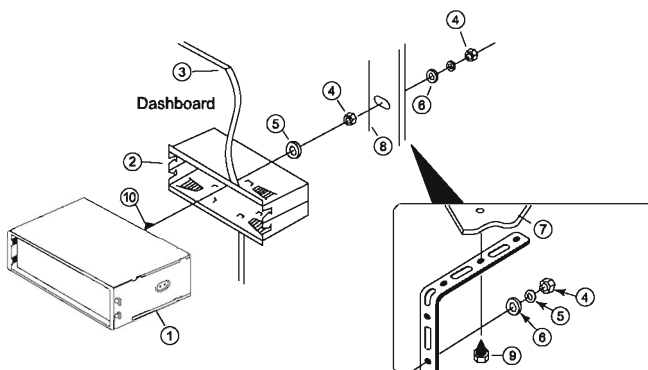
Installation in the dashboard



Note: Keep the release key in a safe place as you may need it in the future to remove the unit from the car.

TO SUPPORT THE UNIT

1. UNIT
2. RELEASE CASE
3. DASH BOARD
4. HEX NUT
5. LOCK WASHER
6. PLAIN WASHER
7. CAR BODY
8. REAR SUPPORT STRAP
9. TAPPING SCREW
10. M5 × 15 HEX BOLT



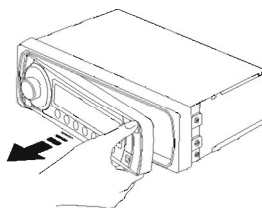
Detaching and attaching the front panel

The front panel of this unit can be detached in order to discourage the thief from stealing the unit.

DETACHING THE FRONT PANEL

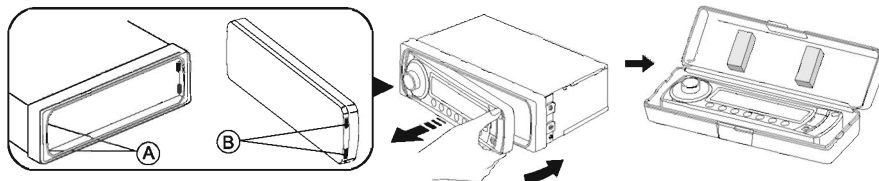
Before detaching the front panel, be sure to press the to power-off the unit first. Press the button to release front panel.

Pull out the panel towards you in order to detach completely the panel from the main unit. Refer to instruction.



ATTACHING THE FRONT PANEL


Make sure the front panel is in the right way up when attaching it to the unit as it cannot be attached upside down. Bring side B of panel to side A of main unit. Insert the panel in and push until it clicks.

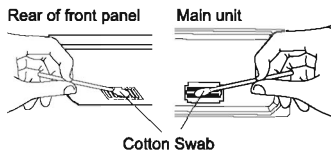


Notes:

- Do not press the front panel hard against the unit when attaching it. It can be easily attached by pressing it lightly against the unit.
- When you carry the front panel with you, put it in the supplied front panel case.
- Do not press hard or give excessive pressure to the display window of the front panel when attaching it to the unit.

CLEANING THE CONNECTOR

The unit may not function properly if the connectors between the unit and the front panel are contaminated with dirt. In order to prevent this from happening, detach the front panel by pressing the  button and clean the connector from time to time. Clean the connector with a cotton swab together with contact cleaner as illustrated. Be sure to clean them carefully pin by pin and make sure not to damage the connecting points.



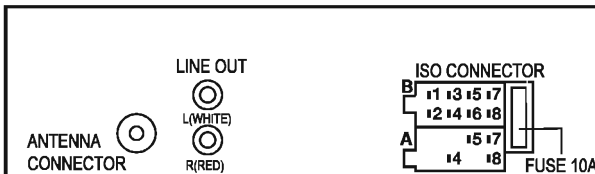
ISO CONNECTOR

RCA Jack Line Out:

Red (right) White (left)

CONNECTOR A

4. MEMORY +12V
5. AUTO ANTENNA OUTPUT
7. +12V (TO IGNITION KEY)
8. GROUND



Note: connector A no. 7 must be connected by car ignition key in order to avoid that car battery being drained when the car will be not used for long period.

CONNECTOR B

1. REAR RIGHT SPEAKER (+)
2. REAR RIGHT SPEAKER (-)
3. FRONT RIGHT SPEAKER (+)
4. FRONT RIGHT SPEAKER (-)
5. FRONT LEFT SPEAKER (+)
6. FRONT LEFT SPEAKER (-)
7. REAR LEFT SPEAKER (+)
8. REAR LEFT SPEAKER (-)

Maintenance

FUSE REPLACEMENT

If the fuse blows, check the power connection and replace the fuse. If the fuse blows again after the replacement, there may be an internal malfunction. In this case, consult your nearest repair center.

Warning

Use the specified fuse amperes for each lead. Use of a higher fuse amperes may cause serious damage.

OPERATING INSTRUCTIONS

1. POWER ON/OFF

Press and hold this key to switch the unit on and off. Also this unit can be turned on by pressing any key. If you just press this key briefly, it will turn to MUTE. To return to sound, press it briefly again.



2. SELECT

3. VOLUME UP/DOWN

Turn the VOL knob Right or Left (3) to adjust VOL/BASS/TREB/BAL/FAD. To select other functions, continue to press the VOL knob until the desired function is shown on the display. See Figure 1.



Fig. 1 Selection of sound control functions
1. VOL 2. BAS 3. TRB 4. BAL 5. FAD

Turn the VOL knob  or  to increase or decrease the volume levels. These buttons can also be used to adjust the BASS, TREBLE, BALANCE and FADER.

TA SEEK/ALARM (2)

Press the SEL button for more than 2 seconds to select TA SEEK/TA ALARM.

2 sec.



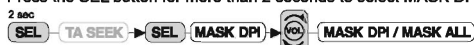
TA SEEK mode: When newly tuned station does not receive TP information for 5 sec., the radio retunes to next station which has not the same station (PI) as the last station, but has the TP information.

In TA seek mode, the current station can be changed to the completely different station because the unit searches TP station when the field strength of the current station is very weak, or the current station has no TP signal.

TA ALARM mode: Any automatic retune mode is not activated, just can hear Beep sound.

MASK DPI/ALL (2)

Press the SEL button for more than 2 seconds to select MASK DPI/MASK ALL.



MASK DPI: masked only the AF which has different PI.

MASK ALL: masked the AF which has different PI and NO RDS signal with field strength.

RETUNE L/S (2)

Press the SEL button for more than 2 seconds to select RETUNE LONG/RETUNE SHORT.



RETUNE L: Select 90 seconds as the initial time of automatic TA search.

RETUNE S: Select 30 seconds as initial time.

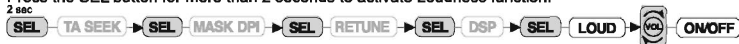
AUDIO DSP CONTROLS (2)

Press the SEL button for more than 2 seconds to select Digital Sound Processor mode.



LOUDNESS CONTROLS (2)

Press the SEL button for more than 2 seconds to activate Loudness function.



LOUD ON/OFF mode is selected by or . The bass and treble response will boost.

SCROLL MODE

Press the SEL button for more than 2 seconds to activate this mode.



SCROLL 1: Unit displays song details but no text scrolling.

SCROLL 2: Unit displays song details and scrolls the text information to the left.

BEEP MODE (2)

Press the SEL button for more than 2 seconds to activate Beep functions.



BEEP ON: BEEP sound can be heard when any button is pressed.

STEREO/MONO (2)

Press the SEL button for more than 2 seconds to activate these function.



When FM signal is weak or distorted, reception may improve by selecting MONO.

LOCAL/DX (2)

Press the SEL button for more than 2 seconds to activate this function.



"Local" position in areas with strong signal will cause radio to stop at only strong stations. During manual tuning (LOC appears). Select Distant position in areas with weak signal.

USING THE RDS FUNCTION

What is RDS?

The RDS (Radio Data System) is a digital information system developed by the EBU (European Broadcast Union). Piggy-backed on normal FM broadcasts, RDS offers a variety of information services and automatic retuning functions for RDS-compatible car stereos. In 1988, RDS became available in the United Kingdom, France, West Germany, Ireland and Sweden. Test transmissions are being conducted in many other European countries. It is expected that RDS will be available in most western European countries in the near future.

'AF/REG' function (ALTERNATIVE FREQUENCIES) (2)

Press the SEL button for more than 2 seconds to activate this function.

2 sec.



When AF/REG mode is selected, the radio checks the signal strength of the AF all the time.

– Regional mode ON:

AF switching or PI SEEK is implemented to the station which have all PI codes same as current station. REG segment is turned on, in LCD display.

– Regional mode OFF

The regional code in the format of PI code is ignored when AF switching or PI SEEK is implemented.

'TA' function (TRAFFIC ANNOUNCEMENT) (2)

Press the SEL button for more than 2 seconds to activate this function.

2 sec.



When TA mode is on and traffic announcement is transmitted

- If the volume level was under the threshold point, it will be raised to the threshold point.
- When TP station is received, TP segment is turned on in LCD display.

'PTY' function (PROGRAM TYPE) (2)

Press the SEL button for more than 2 seconds to activate this function.

2 sec.



When PTY Music is selected, press Buttons (1-6) for desired program types. Unit automatically search for corresponding programs.

- | | | |
|-----------------|--------------------|---------------------|
| 1 Pop M, Rock M | 2 Easy M, Light M | 3 Classics, Other M |
| 4 Jazz, Country | 5 Nation M, Oldies | 6 Folk M |

When PTY Speech is selected, press Buttons (1-6) for desired program types. Unit automatically search for corresponding programs.

- | | | |
|------------------------------|------------------------------|-----------------------------|
| 1 News, Affairs, Info | 2 Sport, Educate, Drama | 3 Culture, Science, Varied |
| 4 Weather, Finance, Children | 5 Social, Religion, Phone IN | 6 Travel, Leisure, Document |

Tips: Since each button number can store multiple program types, i.e. Button 1 stores Pop and Rock music, to switch between Pop and Rock music, simply press button 1 repeatedly until the desired program type shows in display.

DISPLAY MODE (2)

Press the SEL button for more than 2 seconds to activate this function.

Turn VOL knob to left two squares to adjust clock time. Turn VOL knob clockwise to set hours and counter clockwise to set minutes.

2 sec.



4. PRESET STATIONS

Six numbered preset button store and recall stations for each band.

Storing a station:

1. Select a band (if needed)
2. Select a station
3. Hold a preset button longer than one second. Preset station number appears in the display when station is saved.

Recall a station:

1. Select band (if needed)
2. Press a preset button for less than one second to select stored station.

5. MODE BUTTON (MD)

By pressing this key, user can select. AUX/TUNER/USB or MMC/SD mode.

6. BAND BUTTON (BAND)

Push this switch to select the desired band. FM1—FM2—FM3—MW(AM)1—MW(AM)2

7. AUTOMATIC OR MANUAL TUNING (FREQ UP ►► OR FREQ DOWN ◀◀)

(A) RADIO MODE

When pressed for less than 1 second, these keys operate as MANUAL tuning mode.

When pressed longer than 1 second they operate as SEEK tuning mode.

If the keys are not pressed for 3 seconds, they will return to SEEK mode again.

(B) MP3/WMA PLAYER MODE

When pressed for less than 1 second, they will operate as TRACK UP or TRACK DOWN mode.

When pressed longer than 1 second they will operate as CUE or REVIEW mode.

8. AUTOMATICALLY STORE STATIONS (A/PS)

Select six strong stations and store them in current band.

1. Select a band (if needed)
2. Hold A/PS button for more than three seconds. The new stations replace stations already stored in that band.

Preset Scan


Scan stations stored in current band

1. Select a band (if needed)
2. Press A/PS for more than one second but less than three seconds. Radio pauses for five seconds at each station. Press A/PS again to stop scanning when desired station is reached.

9. LCD DISPLAY

The Liquid Crystal Display will display the current state of the unit.

10. PANEL RELEASE BUTTON

Press  button and the front panel will detached.

MP3/WMA CONTROL

TRACK/SEARCH BUTTON

FORWARD ►► AND REVERSE ◀◀ TRACK SEARCH

Press and release to advance to next track or to return to the beginning of the current track (track number will be displayed.) Press and hold to fast forward ►► or reverse ◀◀. Play will begin at the point when you release the button.

11. PAUSE BUTTON

During "PLAY", press (11) 'PAU' button to "PAUSE". Press it again to resume play.

12. REPEAT BUTTON 'RPT'

When this button is pressed, 'RPT' is displayed and the selected track will repeat continually until the Track repeat mode is cancelled by pressing 'RPT' button again.

13. INTRO BUTTON (Preview all Tracks) 'INT'

Press this button to display 'INT'. Each track will play for a few seconds successively. Press again to stop intro and listen to selected track.

14. RANDOM BUTTON 'RDM'

When this button is pressed, 'RDM' is displayed and each track will play in random order instead of normal sequence. To cancel RANDOM mode, press 'RDM' button again.

15. SEARCH PREVIOUS / NEXT FOLDER: (In case of MP3/WMA files) (FL- / FL+)

Press preset button 5 to search previous folder / Press preset button 6 to search next folder

HOW TO SELECT MP3/WMA FILES

1. Searching Track:

- Press and hold "A/PS". Search track is activated.
- Press "SEL" button. The first digit will flash.
- Rotate "VOL knob to right or left". Select first digit desired.
- Press "SEL" button. The first digit is then fixed and second digit will flash.
- Rotate "VOL knob to right or left". Select 2nd and 3rd respectively.
- The song selected will then automatically play.

2. Searching Character:

- Press and hold "A/PS". Press "A/PS" again to activate character search mode.
- Press "SEL" button. "A" character is displayed.
- Rotate "VOL knob to right or left" to select the desired letter.
- Press "SEL" button for longer than 2 seconds. The song with this character will display.
- Rotate "VOL knob to right or left" to select the desired song.
- Press "SEL" button again. The selected song will now play.

3. Searching File Name:

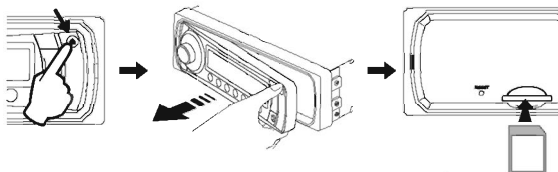
- Press and hold "A/PS". Press "A/PS" again, then directory search is activated.
- Press "SEL" button. The first directory is displayed.
- Rotate "VOL knob to right or left" to select the desired directory.
- Press "SEL" button again. The directory is fixed and the first file name is displayed.
- Rotate "VOL knob to right or left" to select the required file.
- Press "SEL" button again. The selected song will now play.

Connecting it to Portable MP3 Player

16,17. USB PORT / SD/MMC MEMORY CARD

The device is equipped with a USB interface and a memory card reader for SD/MMC cards. MP3 or WMA files stored on these media can be played.

1. Plug your USB storage medium into the USB port.
2. If you use a memory card, insert it into the memory card reader.



3. The player automatically switches to the input used and starts playback.
4. See the section on operations common for audio files on how to control USB or memory card playback.

Note:

- Due to the great variety of devices with USB and SD/MMC card interfaces that sometimes have manufacturer-specific functions, we cannot guarantee that all media will be recognized and that all operational functions will be available with this device.
- You cannot operate USB hard drives on the device.

18. FRONT AUX IN

An external audio source (e.g. portable MP3 player) can be connected to the AUX IN socket to be played back by the vehicle loudspeakers.

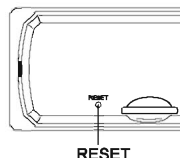
- Connect the AUX IN socket with the audio output of the external device.

RESET

Reset button is placed on the housing.

The reset button is to be activated for the following reason:

- Initial installation of the unit when all wiring is completed.
- All the function button do not operate.
- Error symbol on the display.



TECHNICAL SPECIFICATIONS

MP3/WMA PLAYER SECTION

Signal to Noise Ratio	> 60 dB
Channel Separation	> 50 dB (1kHz)
Frequency Response	20Hz - 20 kHz

TUNER (FM)

Frequency range	87.5-108 MHz
Channel step	50 kHz
Sensitivity	2.8 µV
Stereo separation	30 dB
Signal to noise ratio	50 dB

TUNER (AM)

Frequency range	522-1620 KHz
Usable sensitivity	32 dB

LINE-OUT

Output	1V (max.)
Impedance	10k Ohm

GENERAL

Power Supply	12V DC (10.8-15.6V allowable)
Speaker Impedance	4 or 8 ohm
Output Power	4 × 7 Watts
Fuse	10A

Note: Specifications and design may be subject to change without prior notice.

INSTRUCTIONS AND INFORMATION REGARDING THE DISPOSAL OF USED PACKAGING MATERIALS

Dispose of packaging material at a public waste disposal site.

DISPOSAL OF USED ELECTRICAL AND ELECTRONIC APPLIANCES



The meaning of the symbol on the product, its accessory or packaging indicates that this product shall not be treated as household waste. Please, dispose of this product at your applicable collection point for the recycling of electrical & electronic equipment waste. Alternatively in some states of the European Union or other European states you may return your products to your local retailer when buying an equivalent new product. The correct disposal of this product will help save valuable natural resources and help in preventing the potential negative impact on the environment and human health, which could be caused as a result of improper liquidation of waste. Please ask your local authorities or the nearest waste collection centre for further details. The improper disposal of this type of waste may fall subject to national regulations for fines.

For business entities in the European Union

If you wish to dispose of an electrical or electronic device, request the necessary information from your seller or supplier.

Disposal in other countries outside the European Union

If you wish to dispose of this product, request the necessary information about the correct disposal method from local government departments or from your seller.



This product meets all the basic EU regulation requirements that relate to it.

Changes to the text, design and technical specifications may occur without prior notice and we reserve the right to make these changes.