

SENCOR®

SLE 1950T titanium
SLE 22F50T titanium
SLE 24F50T titanium



LED television Instruction manual

Please read this manual carefully before TV operation. Retain it for future reference. Record model number and serial number of the set. See the label attached on the back cover and quote this information to your dealer when you require service.

Important safety instructions	3
1. Description of the device	6
2. Remote control	7
3. Connection and setting	9
4. Basic operation	11
5. Menu operation	13
5.1 Channel menu	13
5.2 Picture menu	14
5.3 Sound menu	14
5.4 Time menu	15
5.5 Lock menu	16
5.6 Option menu	17
5.7 Digital program recording	17
5.8 Screen menu (in PC mode)	18
5.9 Using media mode	19
5.9.1 Photo	19
5.9.2 Music	20
5.9.3 Video	20
5.9.4 Text	20
6. Important unique buttons	22
6.1 Program guide (in DTV mode)	22
6.2 Channel list	22
7. Teletext	23
8. Troubleshooting Guide	24
9. Technical Specifications	26

TELEVISION



This symbol is used to warn the user about the “dangerous voltage” contained inside the housing of the product that may create a risk of electrical shock.



This symbol is used to remind the user the important usage and service instructions supplied with the device.

- 1) Please **READ** the operating instructions before using the device for the first time.
 - 2) Please observe the instructions contained in the Instruction Manual.
 - 3) Please consider all warnings.
 - 4) **MAKE SURE** that all power connections (extension cables and the connections between the device components) have been made properly and in accordance with the manufacturer's instructions. Before making or changing the connections, power off the device and unplug the mains connection plug.
 - 5) If you have any doubts regarding the installation, operation or safety of the device, please **REFER** to the vendor.
 - 6) **BE CAREFUL** with glass panels and covers on the device. The screen glass may break and cause serious injuries if something hits it.
 - 7) To ensure adequate ventilation, please leave a clearance area of at least 10 cm around the television. This clearance prevents the TV from overheating and consequently causing damage.
 - Using the device in dusty environments should also be avoided.
 - Never block the slots and openings by placing the TV on a bed, sofa, pillow or other similar surfaces.
 - Never install the TV into closed places such as bookcases or cabinets unless adequate ventilation is provided.
 - 8) **DO NOT COVER** the ventilation openings of the device with items such as newspapers, tablecloth, curtain, etc. Overheating causes damage and shortens the service life of the device.
 - 9) Your TV may be damaged if you place it under direct sunshine or close to a heater. Please abstain from using the product in very hot or humid locations or in places where the temperature is likely to decrease below 5°C (41°F). **DO NOT PLACE ON OR NEAR THE DEVICE ANY HOT OBJECTS OR ITEMS WITH OPEN FLAME SUCH AS CANDLES OR ANY NIGHT LAMPS. THE HIGH TEMPERATURE CAN MELT PLASTIC PARTS AND CAUSE A FIRE.**
 - 10) Never operate electrical devices close to water. Operating such devices, for example, near a bathtub, washbasin, kitchen washbasin, washing basin, wet basement and swimming pool can cause fire or electric shock.
 - Do not allow your TV to get wet. Never pour any liquids onto the TV. Do not operate your TV if any solid or liquid substance enters into it. This can cause electric shock and your TV may be damaged. Have it checked immediately by qualified personnel.
 - **KEEP FLAMMABLE MATERIALS AND OPEN FLAME SOURCES (SUCH AS CANDLES) AWAY FROM TV IN ORDER TO AVOID RISK OF FIRE.**
 - THE APPARATUS SHALL NOT BE EXPOSED TO DRIPPING OR SPLASHING AND THAT NO OBJECTS FILLED WITH LIQUIDS, SUCH AS VASES, SHALL BE PLACED THE APPARATUS.
 - 11) **DO NOT USE** headphones at extremely high volume levels since this may cause permanent loss of hearing.
 - 12) Operate your TV only in the 110-240 V~ 50Hz voltage range. Use the AC power cable supplied with the product. If your TV is a grounded (Class I) product, then it must certainly be connected to a grounded socket.
 - **The socket into which you plug in the AC power cable or the adaptor must be within easy reach.**
 - **Unplug the device in order to disconnect it from mains power.**
- Note: If your device has an adaptor, then use the adaptor and AC power cable supplied with your product. Do not use defective sockets. Make sure that the plug is firmly inserted into the socket. If the plug remains loose, then it can cause fire due to arcing. Refer to an electrician to have your socket replaced.**

Important Safety Instructions

- 13) Make sure that the power cable is not stepped on and that there is no bending at the plug sections, plug heads and device output point.
- 14) Use only the accessories specified by the manufacturer.
- 15) Use only together with the carts, bases, tripods, brackets or stands specified by the manufacturer or sold along with the product. When using a cart, pay attention that it will not overturn while carrying the cart/device combination and cause injuries. The device must be fixed to the floor or wall as indicated in the installation instructions in order to avoid any possible damages. Place your device on a level surface.
- 16) Unplug the power cable during thunderstorms or when you will not use your device for a long period of time.
- 17) Consult authorised service personnel for service requirements. Never attempt to repair the device yourself. Opening the cabinet can expose you to dangerous voltages or other hazardous situations. Service is required in situations such as damage to the power cable of the device or its plug, water spills or substances, falling into the device, the device is subjected to rain or moisture, it does not operate normally or it is dropped.
- 18) Wipe the TV cabinet clean with a soft and dry cloth. Wipe dust from the screen gently with a soft cloth. Stubborn stains can be cleaned with a cloth slightly moistened with soap and lukewarm water. Never use solvents such as thinner or gasoline for cleaning. Unplug the AC power cable from the socket when cleaning the TV. Otherwise, there is the risk of electric shock.
- 19) Do not dispose of your TV with regular household waste. Observe local laws and regulations for disposal.

Note 1: This is a Class A product. During operation, the device can cause radio interference. In this case the user may have to remedy this. Please contact your specialist dealer.

Note 2: Electromagnetic fields can cause temporary performance degradation. This can be distinguished as noise in the image.

Remote control and batteries

- The remote control and batteries must not be exposed to direct sunshine or heat sources, such as heating, heat exchangers, stoves or other similar products (including amplifiers) producing heat. Do not use or leave remote control or batteries near the source of open fire.
- Do not expose the remote control sensor to direct sunshine or the light of fluorescent lamp or other fluorescent sources. These may affect the effective range of remote control or the reliability of executive commands.
- Do not expose remote control or batteries to dripping or running water, do not place any objects filled with water (e.g. vases) on them. Protect from raining, splashing or pouring by any liquid. Do not use outdoors. Otherwise you risk a damage of remote control or batteries.
- Do not use remote control or batteries near water.
- Dispose of the exhausted batteries in accordance with the local laws and regulations in order to protect our environment.
- The incorrect use of batteries may cause the leakage of the electrolyte and corrosion. To ensure that the remote control works correctly, proceed according to the instructions below:
 - Do not insert the batteries in the wrong direction.
 - Do not recharge, heat, open or short the batteries.
 - Do not throw batteries into a fire.
 - Do not leave discharged batteries in the remote control.
 - Do not combine various types of batteries or new and old batteries.
 - If you are not using the remote control for a longer period of time, remove the batteries to prevent potential damage caused by a subsequent battery leakage.
 - If the remote control is not working correctly or its operational range is reduced, change all batteries for new ones.
 - If electrolyte leaks out from the batteries, have the remote control cleaned by an authorised service centre.

SENCOR® Appendix to LEDTV Instruction Manual

Precautions When Still Image is Displayed, Red/Blue/Green/Black spots on the screen

A still image may cause permanent damage to TV screen

- Do not display still image on the LEDpanel for more than 2 hours as it can cause screen image retention. This image retention is known as "screen burn". To avoid such image retention, reduce the degree of brightness and contrast of the screen during still image watching.
- Similar "screen burn" effect can appear on the LEDpanel due to still TV channel logo displaying.
- Watching TV in 4:3, 16:9 or similar modes which doesn't cover whole screen for long period of time may leave traces of borders displayed on the left, right or center of the screen caused by the difference of light emission on the screen. Playing a DVD or a game console can cause a similar effect to the screen.
- Displaying still images from video games and PC for longer than a certain period of time may produce partial after-images. To prevent this effect reduce the brightness and contrast when displaying still images.

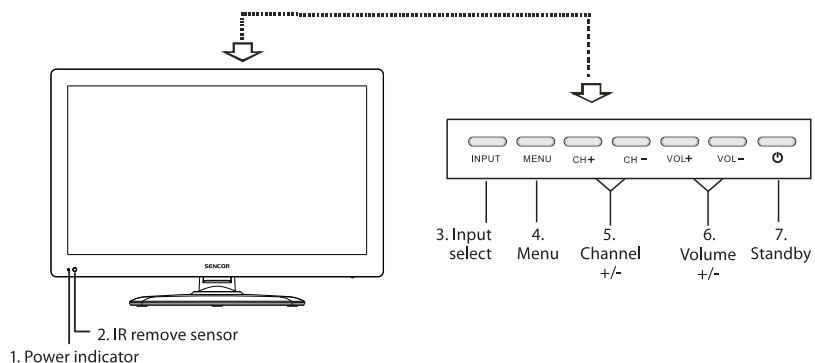


Damage caused by above reasons is not covered by the Warranty!

There may appear red spots, blue spots, green spots and black spots on the screen

- This is a characteristic of liquid crystal panels and is not a problem. The liquid crystal panels are built with very high precision technology giving you fine picture details. Occasionally a few non-active pixels may appear on the screen as fixed point of red, green, blue or black (up to 0.001 % of total display pixels). Please note this doesn't affect the performance of your LEDTV.

1. Description of the device



1. Power indicator

Blue: Normal playing status. Red: Standby status.

2. IR remote sensor

Point remote control at this sensor to conduct remote control.

3. INPUT button

Press to select the input source.

4. MENU button

Brings up the LED main menu to the screen in TV mode.

5. CH +/- buttons

Press to scan through or to select a channel.

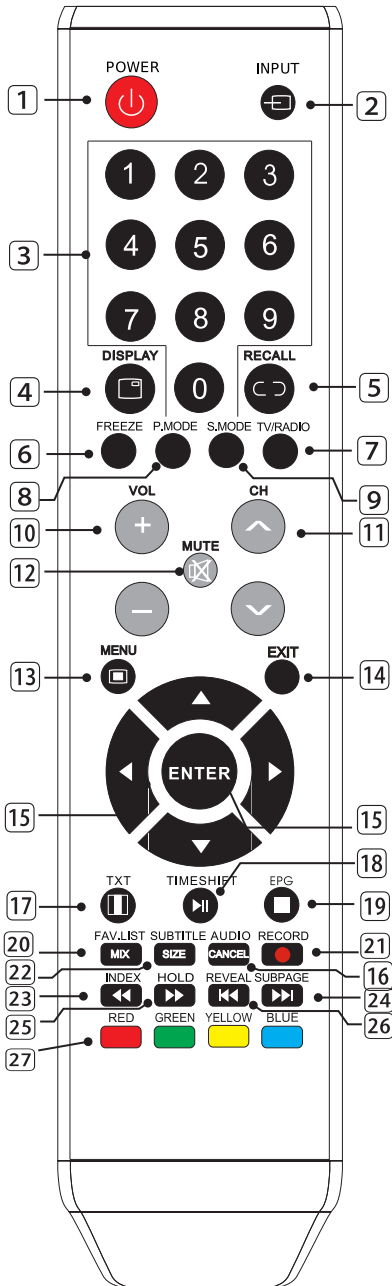
6. VOL +/- buttons

Press to increase/decrease the sound level.

7. STANDBY button

Switch on LEDTV when at standby mode.

2. Remote control



1. POWER button

Switch on LEDTV when at standby mode.

2. INPUT button

Press to select the input source.

3. Numeric buttons 0-9

Press 0-9 to select a TV channel directly when you are watching TV. Enter page number in teletext mode and so on.

4. DISPLAY button

Press to display the source and channel information.

5. button

Return to the previously viewed program.

6. FREEZE

Freeze the picture

7. TV/RADIO button

Press to select TV or RADIO mode.

8. P.MODE button

Press repeatedly to cycle through the available video picture modes.

9. S.MODE button

Press to cycle through the different sound settings.

10. VOL+/- buttons

Press to increase/decrease the sound level.

11. CH+/- buttons

Press to scan through or to select a channel.

12. MUTE button

Press to mute the sound. Press again or press VOL+ to unmute.

13. MENU button

Bring up the LED main menu to the screen in TV mode.

14. EXIT button

Exit function from the menu or display.

15. ▲/▼/◀/▶/ENTER buttons

Allows you to navigate the on-screen menus and adjust the system settings to your preference.

16. AUDIO button

Change in DTV/Media: choose the music background if available. Change audio mode in ATV source: Stereo/Dual I/II/Mono. Change audio mode in other source: Left/Right.

17. TEXT button

Switch on or off the teletext mode.

18. ►II button

Play/pause or start time shift recording.

19. EPG button

Press to show the Electronic Program Guide menu.

20. FAV.LIST button

Press in TV mode to display/exit the FAV menu.

21. ● button

Press to begin recording.

22. SIZE button

Press SIZE to change display size in teletext mode.

23. INDEX button

Press INDEX to display the content page of teletext.

24. SUBPAGE button

Press SUBPAGE to enter sub coded page of teletext.

25. HOLD button

Hold on or off for current page display.

26. REVEAL button

Press REVEAL to show or hide the hidden information of teletext (depending on broadcasting).

27. RED/GREEN/YELLOW/BLUE buttons

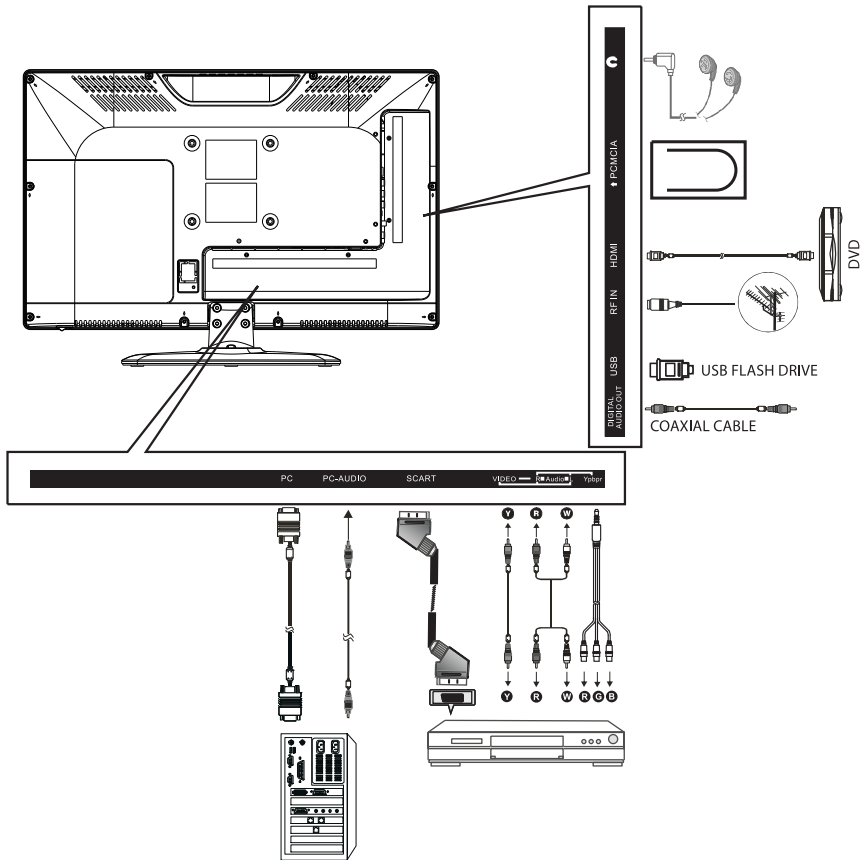
Correspond to the differently colored subjects in teletext.

Note:

Remove battery during storage or when you are not using the device for a long time.

- To control the device using the remote control, point the remote control at the device and then press the button with the required function. The maximum range of the remote control is about 5 meters with a deviation of up to +/- 30° from the perpendicular direction to the reception sensor of the remote control on the front side of the device. The falling capacity of the batteries gradually reduces the remote control range. There must be no solid obstacles in the area between the remote control and the device when the remote control is being used.
- During standard use the lifetime of batteries in the remote control is about 1 year. When the effective range of the remote control is substantially reduced, or when there are problems with its use, change both the batteries in the remote control. If you will not be using the remote control for a longer period of time, take out both batteries from it – in this way you will prevent potential damage caused by their leakage.
- Avoid strong impact of light (e.g. sunlight or light from strong fluorescent/saving sources) which can reduce the effectiveness and reliability of IR remote control.

3. Connection and setting



- Y** Vedio (yellow-AV)
- R** Audio Right (red-AV)
- W** Audio Left (white-AV)
- G** Component Y (green-Component)
- B** Component Pb (blue-Component)
- R** Component Pr (red-Component)

Cable installation

Please read the instruction manual carefully before installation and use.

1. Take out the TV from the package and put it in a drafty and flat place.

Note:

When you plug or unplug the TV, computer or other equipments, you must make sure that the AC power has been already shut down; when unplugging the power cable or signal cable, please hold the plug (the insulated part), do not draw the body of the cable.

2. The RF output terminal can be connected with the RF input port of the TV.
3. The output AV terminal of DVD can be connected with the AV input port of the TV through AV cable.
4. Connect one end of the VGA cable with the VGA port on computer, connect the other end of the VGA cable with the VGA port on the TV, and tighten the bolts clockwise on the each end of VGA cable.

Note:

While connecting the 15-pin VGA, please do not insert the plug overexertedly, for fear the pin might be broken.

5. Connect one end of the HDMI cable to HDMI device, and connect the other end of the HDMI cable to TV.

Note:

While connecting the HDMI, please aim at carefully, do not insert overexertedly, for fear the pin might be broken.

6. Check and make sure that all AV cables are connected with the corresponding ports correctly.
7. Connect SCART socket input or output from an external device to these jacks.
8. Connect the AC power cable with 110 – 240 V~ power supply.

Note:

The range of power input for the TV is 110 – 240 V ~ 50/60 Hz, do not connect the TV power input port with the AC power out of the above range.

Please hold the insulated part of the plug when you are unplugging the power cable, do not touch directly the metallic part of the cable.

4. Basic operation

Connection

1. Connect the antenna and the mains.
2. If TV has a power switch, turn it on firstly. Then press \odot button on the remote to turn on the TV.

Initial setup

When the TV is initially powered on (Or no preset channels), prompts will assist in configuring basic settings.

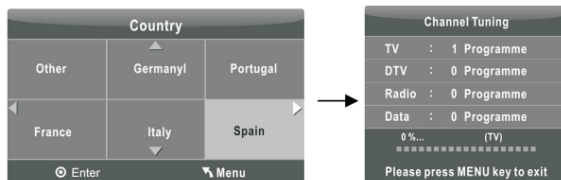
1. Select the desired OSD language.

Press $\blacktriangle/\blacktriangledown/\blacktriangleleft/\blacktriangleright$ and then press **ENTER** button.



2. Select the appropriate country.

Press $\blacktriangle/\blacktriangledown/\blacktriangleleft/\blacktriangleright$ to select the country, and then press **ENTER** button to start auto tuning.



Turning on and off the TV

Turning on the TV

Connect the AC cable then turn on the power switch of the TV (if there is one). The TV will enter standby mode. Press \odot button to turn on TV from standby mode.

Turning off the TV

Press \odot button to enter standby mode. Unplug the set if not using for a long time.

No signal

If no signal input: In TV/DTV mode, the TV will turn off automatically. In PC mode, the TV set will automatically turn off in five minutes.

Program selection

Use **CH+ / CH-** on the front panel of TV or on the remote control.

Press **CH +** to increase channel number.

Press **CH -** to decrease channel number.

Use **0-9** numeric buttons.

Press 0 to 9 to select the channel (in TV or DTV mode).

Example:

Select channel 5: Press 5. Select channel 20: Press 2 and 0.

Volume setting

Press **VOL+/-** to adjust the volume.

Press **⏸** button to switch the sound off. To release mute press **⏸** button again or increase/decrease the volume.

Changing the input source

Press **INPUT** button to select the input source.

Press **▲/▼** buttons to go through the input sources and press **ENTER** button to confirm your choice.

5. Menu operation

Navigation in menu

Before using the TV follow the steps below to learn how to navigate the menu in order to select and adjust different functions. The access step may differ depending on the selected menu.

1. Press **MENU** to display the main menu.
2. Press **◀/▶** to go through the main menu.
3. Press **▲/▼** to select the desired submenu.
4. Press **ENTER** to enter the submenu.
5. Press **▲/▼/◀/▶** buttons to select the desired value. The adjustment in the OSD may differ depending on the selected menu.
6. Press **MENU** to go back to the previous menu.
7. Press **EXIT** to exit from the menu.

Note:

When an item in **MENU** is displayed gray, it means that the item is not available or cannot be adjusted in current menu or submenu.

Buttons on the TV have the same function as corresponding buttons on the remote control.

This manual focuses on operation of the remote control.

5.1 Channel menu

Auto Tuning

Press **ENTER** to start Auto Tuning.

1. Select the country and tune type for channels.
2. The TV will begin memorizing all of the available channels. Once the progress bar is full, the found channels will be stored and the unit will proceed to the search for TV, DTV, Radio and Data.



If you press **MENU** in TV searching, the Auto Tuning will skip to DTV searching as the suggestive picture shows.

ATV Manual Tuning

Press the **▲/▼** to select items. Press the **◀/▶** to adjust it. Press **RED** button to save it. Press the **EXIT** to exit.

DTV Manual Tuning

Press **◀/▶** to select the channel. Press **ENTER** to search. Press **EXIT** to exit.

Program Edit

Press **▲/▼** to select items. Press **RED** button to delete the channel. Press **GREEN** button to rename the channel. In ATV mode, press the **YELLOW** button to move the channel. Except DTV channels with LCN, press the **BLUE** button to skip the channel. Press **FAV** button to set the favorite channel. **CH+/CH-** buttons can be used to select the following or preceding page. In DTV mode, some function of digital broadcasting can be limited by the broadcaster (rename, move).

Signal Information

Display the current signal information.

CI Information (in DTV mode)

This function enables you to watch some encrypted services (pay services). Please insert CI (Common Interface) card into the PCMCIA slot according to the arrow on the CI card.

Note:

The function can only be got when CI slot is available.

This OSD is only for illustration and the menu options and screen format will vary according to the digital pay services provider.

It is possible for you to change CI menu screen and service by consulting your dealer.

Please do not insert or pull out the CI card when power on.

Do not insert or pull out the CI card frequently so as to avoid any damages of the TV and the CI card.

During initialization of the CI card, do not operate the TV.

5.2 Picture menu**Picture Mode**

Select the a type of picture to suit your viewing requirements.

You can change the value of contrast, brightness, colour, tint and sharpness when the picture is in personal mode.

Contrast

Adjust the picture contrast.

Brightness

Adjust the picture brightness.

Colour

Adjust the intensity of all colors.

Tint (only for NTSC mode)

Adjust the picture tint.

Sharpness

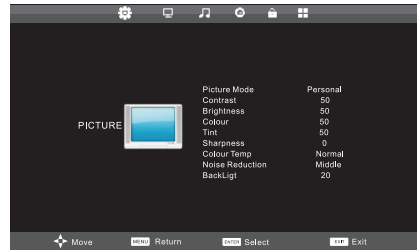
Adjust the picture sharpness.

Colour Temp

Select the color temperature of the picture.

Noise Reduction

Reduce the screen noise without compromising the video quality.

**5.3 Sound menu****Sound Mode**

Select a sound mode to suit your personal preferences.

You can change the value of treble and bass when the sound is in personal mode.

Bass

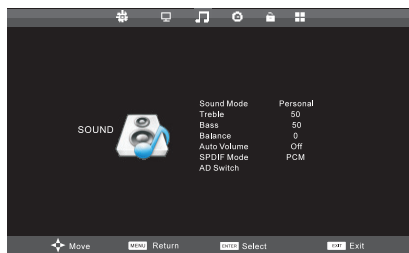
Adjust the sound bass.

Balance

Adjust the sound balance to the desired level.

Treble

Adjust the sound treble.



Auto Volume

Press ▲/▼ to select Auto Volume, and then press **ENTER** to select On or Off. This item is used for reducing the difference between channel and program's volume automatically. It makes the overall water to be even. This function will also reduce the fluctuation of the sound.

SPDIF Mode

Press ▲/▼ to select SPDIF Mode, press **ENTER** to select Auto, Off or PCM.

AD Switch (in DTV mode)

This is an auxiliary audio function that provides an additional audio track for visually challenged persons. This function handles the Audio Stream for the AD (Audio Description), when it is sent along with the Main audio from the broadcaster. Users can turn the Audio Description On or Off and control the volume.

5.4 Time menu

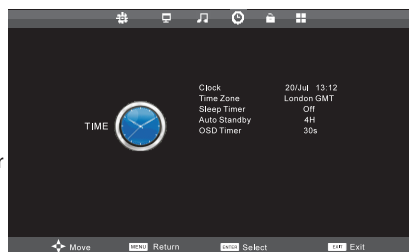
Clock

Display the system time got from DTV signal stream.

Time Zone

Select your time zone.

Press ▲/▼ to select Time Zone, then press **ENTER** to enter submenu. Press ▲/▼/◀/▶ to select time zone.



Sleep Timer

Select the time to turn the TV to standby mode automatically.

Auto Standby

Select the Auto Standby time you want. The TV will enter standby mode automatically when there is no operation for 4 hours.

OSD Timer

Select OSD displaying time.

5.5 Lock menu

Lock System

The feature can prevent unauthorized operating the TV set, unless entering 4-digit password. When Lock System is on and the system is locked, we must input the system password at Auto Tuning, Manual Tuning, Program Edit or Reset. Press the right number buttons for the password. The default password is **0000**.



Set Password

Press **▲/▼** to select Set Password, then press the **ENTER** button to enter submenu to set new password.

Note:

If you forget, the super password of **4711** is still valid.

Block Program (in TV/DTV mode)

Press **▲/▼** to select Block Program, then press the **ENTER** button to enter submenu.

Press **◀/▶** to select the program you want to lock, and then press **GREEN** button on your remote control. To unlock the program, input the password you set. Press **ENTER** to save the setting and **MENU** to go back to the previous menu.

Parental Guidance (in DTV mode)

Press **▲/▼** to select Parental Guidance, and then press **ENTER** to enter submenu to select.

Key Lock

Press **▲/▼** to select Key Lock, and then press **◀/▶** to select Off or On. When Key Lock statue is on, you cannot use the Key panel button.

Hotel mode

You can limit the TV features if used in a hotel. Except the user conveniences, it locks the most important functions of TV (tuning and edit channels) by using a password.

Hotel mode On and Off – you can turn on or off the hotel mode.

Input lock – turning on the lock you can eliminate the availability of certain source for a user.

Initial source – select the source which TV will select after turning on.

Initial program – select the initial channel number (only for ATV).

Max. volume – select OK, press left/right to adjust the max. available volume and press OK to confirm.

(The function serves to regulate the max. available volume in order not to disturb other guests by loud listening. Select according to your preferences. If 100 selected, it means the max volume will not be limited.)

Delete lock – Delete the overall lock of the hotel mode

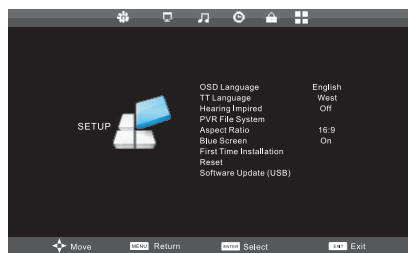
Note:

- Do not forget to change the initial password 0000 to your own password.
- Hotel mode subordinated to the overall TV lock. To activate the hotel mode, you should activate the overall lock in Lock system menu as well as the hotel mode.

5.6 Option menu

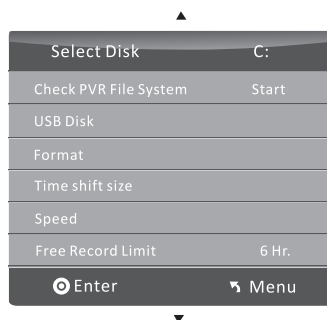
OSD Language

Press ▲/▼ to select OSD Language, then press **ENTER** button to enter submenu. Press ▲/▼/◀/▶ to select OSD language.



TT Language

Press ▲/▼ to select TT Language, and then press **ENTER** to enter submenu. Press the ▲/▼ to select TT language.



Hearing Impaired

Press ▲/▼ to select Hearing Impaired, and then press **ENTER** button to select On or Off.

PVR File System (in DTV mode)

Select Disc: Select the disc used for PVR.

Check PVR File System: Check the discs and test the system speed.

USB Disc: Activation/deactivation of USB.

Format: Format of USB disc.

Time shift size: Select the time shift.

Speed: Display the speed of the storage device.

Free Record Limit: Select the recording duration.

5.7 Digital program recording

Insert an USB disc and the system will automatically create a folder (_MSTPVR) to store the files has been recorded.

1. Press ● button to record the current program. During the recording, press ● button to display or hide the record menu.
2. Press ■ button to stop recording. The TV will return to normal TV broadcasting mode.
3. When the storage space of disc is shortage, it will appear a warning message, then it stops recording automatically and return to normal TV broadcasting TV mode.
4. Press **INDEX** button to see the recorded list information.
5. Press **DISPLAY** button to see the details of the program.

Time shift function

Press ►|| to activate Time Shift while recording. Press ● to display or hide the Time shift menu. You can operate refer to the **TIME SHIFT** menu.

Record List

Press the **INDEX** button to display the Record list.
Press ▲/▼ to select an item, then press **ENTER** button to play.
Press the **RED** button to delete the program.
Press the **GREEN** button to display the program information.
Press the **INDEX** button to sort programs.
Press **EXIT** button to exit.

Note:

Capacity of USB disc should be more than 512 MB. Please format the inserted USB disc when it cannot be recorded to. Do not disconnect the device while formatting is in progress. If you format the device, all files will be deleted. Please back up your files before formatting. The PVR file destination should be chosen manually if there is more than one partition on the disc. USB memory device must support USB2.0 high-speed specification. Some of nonstandard USB device may not be supported.

Aspect Ratio

Aspect ratio supported: 4:3 a 16:9.

Blue Screen

In TV mode, the background can be blue if there is no signal. Press **ENTER** to set ON or OFF.

First Time Installation

Press ▲/▼ to select First Time Installation, press **ENTER** to set options including OSD language, country and channel tuning.

Reset

Recall the default factory setting.

Software Update (USB)

Press ▲/▼ to select Software Update (USB), press **ENTER** to update software using USB. Then press ◀ to conform or ▶ to cancel.

5.8 Screen menu (in PC mode)**Auto Adjust**

Adjust the image automatically.

H-Offset

Centre the image by moving it to left or right.

V-Offset

Centre the image by moving up or down.

Size

Adjust the screen size.

Phase

Adjust when characters have low contrast or when the image flickers.

Position Reset

Reset the screen setting to the default.

5.9 Using media mode

Access/exit DMP mode

1. Connect an USB device.
2. Press **SOURCE**, use ▲/▼ to highlight Media, and press **ENTER** to access the Media mode.
3. You may also use the source selection bar to exit from the Media mode.

Note:

Special USB device may be not supported.

The formats supported

DMP function supports the USB device with Following formats:

Photo Format Support: JPEG, BMP, PNG.

Music Format Support: MP3, AAC, M4A.

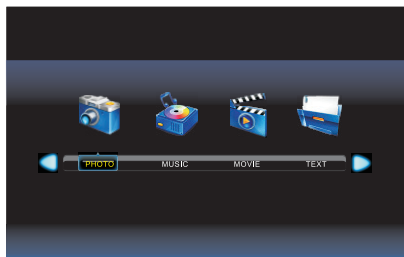
Movie Format Support: AVI, VOB, DAT, MPG, TS/TP.

Text Format Support: TXT.

Note:

Some documents may not be supported.

Main operating interface



5.9.1 Photo

Press ◀/▶ to select **PHOTO** in the main menu, and then press **ENTER** to enter.

Press **EXIT** to return to the previous menu.

Press ◀/▶ to select partition, and then press **ENTER** to enter.

Press ▲/▼/◀/▶ to select **Return** option to go back to the previous menu.

Press ▲/▼/◀/▶ to select the file from the list. When highlighting the option you select, the file information will appear on the right and picture will be previewed in the center.

Press **ENTER** to play the selected file.

Press **DISPLAY** to display the tools bar.

Press **EXIT** to stop playing and return to the previous menu.

5.9.2 Music

- Press ◀/▶ to select **MUSIC** in the main menu, and then press **ENTER** to enter.
- Press **EXIT** to return to the previous menu.
- Press ◀/▶ to select partition, and then press **ENTER** to enter.
- Press ▲/▼/◀/▶ to select **Return** option to go back to the previous menu.
- Press ▲/▼/◀/▶ to select the file from the list. When highlighting the option you select, the file information will appear on the right.
- Press **ENTER** to play the selected file.
- Press ◀/▶ to select options you want to run, press **ENTER** to operate.
- Press **EXIT** to stop playing and return to the previous menu.

5.9.3 Movie

- Press ◀/▶ button to select **MOVIE** in the main menu, and then press **ENTER** to enter.
- Press **EXIT** to return back to the previous menu.
- Press ◀/▶ to select partition, and then press **ENTER** to enter.
- Press ▲/▼/◀/▶ to select **Return** option to go back to the previous menu.
- Press ▲/▼/◀/▶ to select a file from file list. When highlighting the option you select, the file information will appear on the right and movie will be previewed in the center.
- Press **ENTER** to play the selected movie.
- Press **INFO** to display the tools bar.
- Press ◀/▶ to select options you want to run, press **ENTER** to operate.
- Press **EXIT** to stop playing and return to the previous menu.

5.9.4 Text

- Press ◀/▶ to select **TEXT** in the main menu, press **ENTER** to enter.
- Press **EXIT** to return to the previous menu.
- Press ◀/▶ to select partition, and then press **ENTER** to enter.
- Press ▲/▼/◀/▶ to select **Return** option to go back to the previous menu.
- Press ▲/▼/◀/▶ to select a file from file list. Press **ENTER** to display.
- Press ▲/▼ to page up or page down the file.
- Press **INFO** to display the tools bar.
- Press ◀/▶ to select options you want to run, press **ENTER** to operate.
- Press **EXIT** button to return back to the previous menu.

Basic operation

1. ▶||: Play/Pause
2. ■: Stop
3. ◀◀/●: Fast reverse/Fast forward
4. ◀◀/▶▶: Previous/Next
5. **RED** button
You can delete the selected file.
6. **CH+/CH-**
When view the **TEXT** files, press **CH+/CH-** to change the pages up and down.
7. **REPEAT**
When play **PHOTO**, **MOVIE** and **MUSIC** files you can press this button to select the repeat playback mode.
8. ◀/▶
Change the rotation of the display of a photo. If select the rotation clockwise when playing a photo, photo playback will be automatically paused.

Note:

- Before using the USB memory device, check its functionality of communication with a device and reading/recording speed of data. Be noted that reading the data can be quicker than recording on the same device and thus some devices can be suitable only for playing, but not for recording. In order to reach the max reading speed, we recommend keeping the defragmented disc space, using FAT32 file system, one part without protection.
- USB connector is of standard type and it cannot supply the USB device with higher consumption (e.g HDD). Use a device with own power supply and supply them from their chargers.
- The device was design with regard to the maximum compatibility with memory devices. Due to the wide range of devices on the market, it cannot be guaranteed full compatibility with any USB device. The device was tested when using Kingston memory devices.

Note to playing music, photo and movie files:

Despite the effort of the widest compatibility of built-in codecs, it is possible that the picture or sound or both will not be recognized or played correctly while playing. Use other type of encoding. The device is not intended to play the HD content.

6. Important unique buttons

6.1 Program guide (in DTV mode)

PROGRAMME GUIDE	
28 Jul 2004 04:00-05:00 Tom thinks hell! rumours of baby bashing start to circulate	28 Jul 2004 04:08
28 Jul	
1 7 Digital	04:00-05:00 BLUE HEELERS
2 7 HD Digital	05:00-06:00 PASSIONS
3 AFDO.4:3	
Record Move View	Display Next Day
Schedule Prev Day	Remind OK

Press **EPG** to enter **PROGRAMME GUIDE** menu.

Press **RED** (teletext) button to enter the submenu of program recording. You can choose the time of the appointment you want to record. The unit is able to do schedule recording when TV is turning on or in standby mode. You can set up several schedule recording. Different schedules should not overlap. When recording starts in standby mode, there will be no picture or sound from the unit. From the information about the selected program, it offers you the time of the beginning and the time of the end of recording which you can change if needed, e.g. because of delayed start/end or advertisements. Press **ENTER** to confirm the selected values. TV will inform you about successfully saved timer or trouble which occurred when entering the data. You can leave the menu before saving by pressing **RED** button again.

Press **GREEN** button to show detailed channel information.

Press **YELLOW** button to see the setting you have done before. In the list, you can select a certain timer and press **RED** button to delete it.

Press **BLUE** button to set the time you want to remind the program you want to watch. The time is offered according to the selected program but you can change it using the arrows if needed (e.g. 2 minutes ahead).

Press Up/Down to change the channel.

Press Skip FWD/BCK to select the previous/next day (up to 7 days ahead, depending on broadcasting).

Press **EXIT** to exit.

Note:

Content, completeness and accuracy of EPG are determined by a broadcaster. Television does not affect it. TV reads the accompanying data from broadcasting and it updates the display so as it receives the information.

6.2 Channel list

Press **ENTER** to display the Channel List.

Press **▲/▼** to select the channel. Press **ENTER** button to display the channel.

Press **◀/▶** button to page up or down the Channel list.

Press **EXIT** or **ENTER** to exit.

Favorite List

Press **FAV** button to display or exit the favorite list.

Press **▲/▼** to select the items. Press **ENTER** button to enter the channel.

Press **◀/▶** to page up or page down the Favorite list.

7. Teletext

Using teletext

Display teletext

1. Select a program with a teletext.
2. Press **TEXT** to enter teletext mode.
3. Press **TEXT** 2nd to enter Mix mode, this function enables you to super impose the teletext page over the TV program.
4. Press **TEXT** 3rd to return or exit to the normal TV/DTV mode.

Page selection

1. Using numeric buttons, enter the page number (three digits). If you press a wrong number during input, you must complete the three digit number and then reenter the correct page number.
2. **CH-/CH+** can be used to select the preceding or the following page.

Hold

Press **HOLD** to hold a page and press it again to release the page.

Index

Press **INDEX** to enter the main index page directly.

Enlarging text

You can double the text size to make it easier to read when displaying the page.

1. Press **SIZE** to enlarge the top half of the page.
2. Press **SIZE** to enlarge the bottom half of the page.
3. Press **SIZE** once more to go back to normal display.

Reveal mode

You can display the hidden teletext information (e.g. answer to puzzles or riddles, etc.). Use **REVEAL** button. Press **REVEAL** again to hide the information.

Subpage

Some pages of teletext can contain subpages which are automatically displayed at certain cycle.

1. Press **SUBPAGE** and using left/right to enter a certain subpage directly.
2. Press it again to exit the subpage mode.

Color buttons (red, green, yellow and blue)

Press these buttons to access directly to corresponding color pages at the bottom part of the screen. Match of pages to certain colors is dynamic and an author of teletext pages determines that.

8. Troubleshooting guide

Troubleshooting

Before you contact our service, perform the following simple checks. If problem still persists, disconnect the TV and contact the service.

PROBLEM	POSSIBLE SOLUTION
No sound and picture	<ul style="list-style-type: none"> - Check whether the power cord is inserted the power outlet. - Check whether you have pressed the POWER button on the front panel of TV set. - Check the setting of brightness and contrast.
Normal picture, but no sound	<ul style="list-style-type: none"> - Check the volume. - Sound muted? Press MUTE button. - Try another channel, problem can be with broadcasting. - Are audio cable installed correctly?
The remote control does not work.	<ul style="list-style-type: none"> - Check whether there is no object between the TV and the remote control. - Are batteries inserted correctly? - Correct operating mode set: TV, VCR etc.? - Insert new batteries.
TV is suddenly turned off.	<ul style="list-style-type: none"> - Is sleep timer set? - Check the power supply. Power has been interrupted. - Auto turn off function has been activated and tuned channel broadcasts no signal, or the remote control has not been used for a long time.
Picture appears slowly after switching on.	<ul style="list-style-type: none"> - It is normal; the picture is muted during the startup process. If the picture does not appear after 5 minutes, please contact the service center.
No or poor color or poor picture	<ul style="list-style-type: none"> - Adjust the color in menu. - Keep a sufficient distance between the TV and the VCR. - Try another channel, problem can be with broadcasting. - Are the video cables installed correctly? - Activate any function to restore the picture brightness.
Horizontal/vertical bars or picture shaking.	<ul style="list-style-type: none"> - Check for local interference such as an electrical appliance.
Poor reception of some channels	<ul style="list-style-type: none"> - Channel or cable TV problems. Tune other station or frequency of the same channel. - Channel signal is poor or disturbed. Reorient the antenna or have the antenna checked. (Bad antenna is usually the most common cause of reception problems.) - Check for the source of possible interference.
Lines or streaks in picture	<ul style="list-style-type: none"> - Check the antenna (change the direction of the antenna).
No output form one of the speaker	<ul style="list-style-type: none"> - Adjust the balance in the menu.

NOTE:

Problem in VGA mode (only for VGA mode).

Troubleshooting guide

PROBLEM	POSSIBLE SOLUTION
The signal is out of range.	<ul style="list-style-type: none"> - Adjust resolution, horizontal frequency or vertical frequency. - Check whether the signal cable is not loose. - Check the input source.
Vertical bar or stripe on the background and horizontal noise and incorrect position.	<ul style="list-style-type: none"> - Start up the automatic setting or adjust timing, phase or H/V position.
Unstable colors or single color picture.	<ul style="list-style-type: none"> - Check the signal cable. - Reinstall the PC video card.

Maintenance

Suitable maintenance can prevent from untimely aging of the device. Regular and careful cleaning can prolong the lifetime of your TV set. Always turn off and unplug the device from the power outlet before cleaning.

Cleaning the screen

1. Wet the soft cloth in a mixture of lukewarm water and fabric softener or dish washing detergent. Wring the cloth until it is almost dry and then wipe the screen.
2. Be sure no water remain on the screen. Before turning on the device make sure the device is absolutely dry.

Cleaning the cabinet

To remove the dirt and dust use a dry and soft cloth. Do not use wet cloth.

Extended absence



If you do not use the TV for a long time (e.g. holiday), unplug the power cord to protect the device from possible damage from lightning or power surges.

9. Technical specifications

Model	SLE 1906T	SLE 22F06T	SLE 24F06T	
Display Size	19" (max.)	22" (max)	24" (max)	
LED Panel Resolution	1366 × 768	1920 × 1080	1920 × 1080	
Sound Output	2 × 2 W			
Power Supply	110 – 240 V~, 50/60 Hz			
TV system	TV PAL: I, B/G, D/K SECAM: D/K, B/G, L			
Frequency	TV 46,25 MHz – 855,25 MHz			
Video input	NTSC 3.58/NTSC 4.43, PAL, SECAM			
Power consumption	30 W	35 W	41 W	
Standby Consumption	≤ 0.5W			
Antenna Input	75 ohms, unbalance			
Control Power	3 V (2 × AAA batteries)			
DVB-T	Receiving Range	VHF (174 MHz – 230 MHz)		
		UHF (474 MHz – 862 MHz)		
	Input Impedance	75 ohms		
	Channel Bandwidth	7 MHz / 8 MHz		
	Modulation	COFDM 2K/8K		
		QPSK, 16QAM, 64QAM		
Video system	MPEG-2 MP@ML			
Sound system	MPEG-1 layer 1/2, MPEG-2 layer 2			
Dimensions (L × W × H)	TV with stand	466 × 161 × 348	531 × 161 × 379	577 × 165 × 404
	TV without stand	466 × 49 × 304	531 × 45 × 332	577 × 46 × 359
Weight (net weight)	TV with stand	4 kg	4.8kg	5.5kg
	TV without stand	3kg	3.8kg	4.5 kg
Work Temperature	0 – 40 °C			
Accessories	Instruction Manual Remote Control Wall mount accessories (optional)			

Features and specifications are subject to change without notice.

INSTRUCTIONS AND INFORMATION REGARDING THE DISPOSAL OF USED PACKAGING MATERIALS

Dispose of the packaging material in the designated place for waste disposal.

DISPOSAL OF USED ELECTRICAL AND ELECTRONIC APPLIANCES



The meaning of the symbol on the product, its accessory or packaging indicates that this product shall not be treated as household waste. Please, dispose of this product at your applicable collection point for the recycling of electrical & electronic equipment waste.

Alternatively in some states of the European Union or other European states you may return your products to your local retailer when buying an equivalent new product. The correct disposal of this product will help save valuable natural resources and help in preventing the potential negative impact on the environment and human health, which could be caused as a result of improper liquidation of waste. Please ask your local authorities or the nearest waste collection centre for further details. The improper disposal of this type of waste may fall subject to national regulations for fines.

For business entities in the European Union

If you wish to dispose of an electrical or electronic device, request the necessary information from your seller or supplier.

Disposal in other countries outside the European Union

If you wish to dispose of this product, request the necessary information about the correct disposal method from local government departments or from your seller.

BATTERY DISPOSAL



To preserve natural resource, please cycle or dispose of expired battery properly! This product contains battery and must be disposed of properly! Local or federal laws may prohibit disposal of batteries in ordinary trash. Consult your local waste authority for information.



This product meets all the basic EU regulation requirements that relate to it.

Changes to the text, design and technical specifications may occur without prior notice and we reserve the right to make these changes.

