

SENCOR®

SPV 8012M4

SPV 8013M4

PORTABLE DVD PLAYER

PŘENOSNÝ DVD PŘEHŘÁVAČ

PRENOSNÝ DVD PREHRÁVAČ

HORDOZHATÓ DVD LEJÁTSZÓ

PRZENOŚNY ODTWARZACZ DVD

ПОРТАТИВНЫЙ DVD ПЛЕЕР

INSTRUCTION MANUAL

NÁVOD K OBSLUZE

NÁVOD NA OBSLUHU

FELHASZNÁLÓI KÉZIKÖNYV

INSTRUKCJA OBSŁUGI

РУКОВОДСТВО ПОЛЬЗОВАТЕЛЯ

EN CZ SK HU PL RU

CONTENTS

1. Important safety conditions	3
2. Description of the device	7
3. Remote control	9
4. Basic controls	11
4.1. Turning the device on and off.....	11
4.2. Playing DVD discs.....	11
4.3. Playback from USB devices.....	11
4.4. Playback from card readers.....	12
4.5. Audio/Video output.....	12
4.6. Using multimedia functions.....	12
5. System setup	14
5.1. System setup.....	14
5.2. Basic functions.....	15
6. DVB-T reception	16
6.1. Setting up the DTV channel search.....	16
6.2. Menu program.....	16
6.3. Editing programs.....	17
6.4. Parental lock.....	18
6.5. Setting up digital audio.....	19
6.6. Setting up video output.....	19
6.7. USB multimedia function.....	19
7. Troubleshooting	23
8. Technical specifications	24

1. Important safety conditions

If you want to use this product correctly, carefully read this user's manual and store it for future reference. If you give (sell) the device to somebody, please also include all the documentation together with this device, including this user's manual.



This symbol indicates that there is dangerous voltage inside this device, which presents a risk of injury by electrical shock.



This symbol indicates important operating or repair instructions in the device's documentation.



General safety instructions

- Read this user's manual. Follow the instructions contained in this user's manual.
- Heed all warnings.
- Adhere to all instructions.
- Use only accessories determined by the manufacturer.
- An open flame must not be placed on the device, e.g. burning candle.
- Use the device in a temperate climate zone.
- Neither the manufacturer nor the vendor of the device under no condition takes responsibility for any direct or indirect damages caused by not adhering to instructions for installation, set-up, use, repair or cleaning of this device as described in this user's manual.
- Protect the device against being knocked, dropped, hit, shaken and against vibrations, humidity and dust.
- Before allowing children to use the device, they must be appropriately to their age, informed about the correct and safe use of the player.

Installation, operation

- Install the device according to the instructions in the user's manual.
- Leave free space on all sides of the device, necessary for proper air circulation. This removes the heat created during operation. Covering the ventilation openings of the device's case creates a risk of overheating or damaging the device. It is necessary to ensure that the ventilation openings are not blocked, e.g. by a newspaper, table cloth, curtain, etc. Follow the installation instructions in the user's manual.
- Do not install the device in direct sunlight or near sources of heat, such as heaters, heat exchangers, stoves or other appliances (including amplifiers) producing heat. High temperatures significantly reduce the lifetime of electronic components in the device. Do not use or leave the device in the vicinity of an open fire.
- The device must not be exposed to dripping or running water and objects filled with water must not be placed on it, e.g. vases. Protect the device against rain, spray or contact with any other liquid, do not leave or install the device outdoors. Do not use the device outdoors. Not adhering to these instructions creates a risk of electrical shock or fire hazard.
- Do not use this device near water.
- Do not try to circumvent the polarised power plug safety feature. If the power plug cannot be inserted into your power socket, contact a qualified electrician to replace the old type of power socket.
- Before connecting the device into a power socket, check that the voltage in your power socket corresponds to the voltage on the rating label of the device or on its power adapter.
- Make sure that the power cord is not stepped on or compressed, particularly near the power plug, power socket and at the point where it exits the device or the adapter. The power plug (adapter) is used as a disconnection device and must be easily accessible.
- Remember to always disconnect the power plug (adapter) from the power socket before disconnecting the power cable from the rear side of the device.
- Disconnect the device from the power socket during storms or if you will not be using it for a longer time.
- Avoid moving the device from a cold environment to a warm one or vice versa, or when using the device in a very humid environment. Air humidity may condense on some components inside the case of the device and the device may stop working temporarily. If this occurs leave the device in a warm and well ventilated place and wait 1 – 2 hours until the moisture evaporates and the device can once more be used as usual. Take care especially during the first use of the player immediately after its purchase during a cold season.
- To recharge the battery pack that is integrated into the device, place the device in a well ventilated place and at a sufficient distance from easily flammable materials.
- Neither the manufacturer nor the vendor of the device under no condition takes responsibility for any direct or indirect damages caused by not adhering to instructions for installation, setup, use, repair or cleaning of this device as described in this user's manual.
- Protect the device against being knocked, dropped, hit, shaken and against vibrations, humidity and dust.

Repairs and maintenance

- To prevent risk of injury through electric shock or the creation of a fire, do not take the device out of the case - there are no parts inside the case repairable or adjustable by the user without relevant equipment and qualifications. Should the device require adjustment or repair, contact a professional service centre.
- In the case of any unusual events occurring during the use of the device, e.g. if there is a distinct smell of burning insulation or smoke comes out of the device, immediately turn off the device, disconnect the device from the power source and do not use the device until you have received the results of the inspection performed by the employees of the professional service centre.
- Have all repairs carried out by qualified personnel. Repairs are necessary if the device has been damaged in any way, for example if the power cord is damaged, liquid was poured on the device, foreign objects have entered the device, the device has been exposed to rain or moisture, if the device is not working as usual or if it has fallen.
- Before cleaning, carrying, taking discs out of the device or other maintenance, disconnect the plug (adapter) from the power socket.
- Clean the device only with a dry cloth.
- For cleaning do not use petrol, thinners or any other solvents or use any abrasive cleaning agents, steel wool or any sponges with steel wool.

Remote control and batteries

- Do not expose the remote control or the batteries to direct sunlight or sources of heat, such as heaters, heat exchangers, stoves or other appliances (including amplifiers) that produce heat. Do not use or leave the device in the vicinity of an open fire.
- Neither the remote control nor the batteries may be exposed to dripping or running water and objects filled with water must not be placed on them, e.g. vases. Protect against exposure to rain, spraying or pouring of any kind of liquid. Do not use outdoors. Not following these instructions creates a danger of damage to the remote control or the battery.
- Do not use this device near water.
- It is necessary to pay attention to the environmental impact aspects of battery disposal.
- The incorrect use of batteries may cause the leakage of the electrolyte and corrosion. To ensure that the remote control works correctly, proceed according to the instructions below:
 - Do not insert the batteries in the wrong polarity orientation.
 - Do not charge, heat, open or short circuit the batteries.
 - Do not throw batteries into a fire.
 - Do not leave discharged batteries in the remote control.
 - Do not combine various types of batteries or new and old batteries.
 - If you will not be using the remote control for a longer period of time, remove the batteries to prevent potential damage caused by a subsequent battery leakage.
 - If the remote control is not working correctly or its operational range is reduced, change all batteries for new ones.
 - If electrolyte leaks out from the batteries, have the remote control cleaned at an authorised service centre.


Attention: To prevent a fire hazard or injury by electrical shock, do not expose this device to rain or humidity.

Attention: Batteries must not be exposed to excessive heat, for example sunlight, fire, etc.

Supplement to the LCD TV user's manual

Measures to take when a static image is displayed; red/blue/green pixels on the screen

A static image can permanently damage the display part of the television

- Do not leave a static image on the LCD screen for longer than 2 hours, because this could damage the screen. This type of damage is known as "screen burn-in".
 - Similar damage to the LCD screen can be caused by a statically located TV channel logo.
- 
- Watching television in 4:3, 16:9 formats or similar (formats not covering the entire area of the screen) for a long time may leave marks on the right or left side, or possibly in the middle of the picture as a result of the differences in light emission. Similar damage may also occur when watching a DVD or playing games.
 - The display of a static image from video games or computers for an extended period of time may cause a partial effect of a "persistent image". To prevent this effect from occurring, lower the brightness and contrast when displaying a static picture.
 - Damage to the screen resulting from the above mentioned causes is not covered by the warranty!

Red/blue/green/black pixels may appear on the screen

- This is a characteristic feature of liquid crystal displays and does not represent a problem. LCD screens are manufactured using a very precise technology in order to achieve a very fine picture resolution. From time to time several inactive pixels may appear on the screen as a permanently red, blue, green or black pixel (up to 0.001% of the total number of pixels on the screen). This does not in any way affect the features and performance of your television.

Notes on the USB connector:

USB flash drives must be inserted into the device directly. To prevent data transmission failure or its interference do not use USB

extension cables. Electrostatic discharges may cause the device to malfunction. In such an event the user must restart the device. Before using a USB flash drive test its ability to communicate with the device and its data reading and writing speed. To achieve maximum reading speed we recommend that you keep disc space defragmented. Use the FAT32 file system, a single partition, without protection. If reading and writing on the USB flash disk is not continuous, undesirable effects may occur such as partial image loss (distortions/checkering effects) or complete image loss, audio defects, and in extreme cases the operation will be stopped. Unexpected behaviour of the connected flash drive, or the presence of viruses or other damaging software may cause the functions of the device to stop working, necessitating a restart.

The USB connector is the standard type and is not able to power a USB device with a high power usage (e.g. hard disk drives HDD). Use devices with independent power supplies and power them from their own power supplies.

The device was designed to achieve maximum compatibility with flash drives. With respect to the variety of devices on the market it is not possible to guarantee compatibility with every USB device. In the event of difficulties try formatting the flash drive directly in the appliance. If problems persist, use a different flash drive.

Due to the wide range of SD/MMC/MS cards / USB devices available on the market it is not possible to guarantee the compatibility of the device with all SD/MMC/MS cards / USB devices.

This product is equipped with copyright protection technology, which is protected by USA patents and other intellectual property laws of ROVI. Reverse engineering and disassembly are forbidden.

Notes about discs

Handling discs

- Do not touch the surface of the disc where there is no label and where the recording is stored. When handling the disc, hold it by its edges, or by the edge and the centre disc opening. Do not stick labels on to the discs - to label a disc use soft tip markers specially designed for this purpose, mark the side of the disc with the label.



- After playback return the disc into its cover, where it is protected against scratching. Do not leave discs in direct sunlight or near a heat source, do not leave discs in closed motor vehicles parked in direct sunlight. Risk of deformation of the disc.

Cleaning discs

- Fingerprints and dust affect the quality of the image while playing the recording from the disc. To remove this before playing the disc, clean with a soft lint-free cloth. When cleaning a disc proceed from the centre of the disc directly towards the edge (not using circular motion).



- For cleaning, do not use anti-static sprays for vinyl records, petrol, spirits or other solvents or thinners.

RW
COMPATIBLE

This information informs the user that the player can playback DVD-RW recordings in VR format (Video Recording).

Notes:

- Depending on the recording media, recording method (used PC program used for the disc recording) and its finalisation, it is possible that it will not be possible to play some CD-R or DVD+/-RW/R discs.
- Do not stick any stickers or labels on either side of the disc (the side with the printed label or the side with the recording).
- Use the player to play only circular discs - when playing irregular shaped discs there is a risk of damaging the disc or the player.
- Some DVD and Video CD playback operations may be intentionally programmed by the producer of the software. This device plays DVD and Video CD discs according to the disc contents created by the producer of the software and so some playback functions may not be available, or conversely there may be additional functions available.

Supported discs

Disc type	Marking	Contents	Size	Playback time
DVD	DVD	Audio + video (moving pictures)	12CM	About 2 hours (SS-SL: single sided or single layer discs)
				About 4 hours (DS-SL: double sided or double layer discs)
			8CM	About 80 minutes (SS-SL: double sided or double layer discs)
				About 160 minutes (DS-SL: double sided or double layer discs)
SuperVCD	SuperVCD	Audio + video (moving pictures)	12CM	About 74 minutes
VCD	VCD1.0/2.0	Audio+video (moving pictures)	8CM	About 20 minutes
CD	CD	Audio	12CM 8CM	About 74 minutes About 20 minutes
MP3	MP3	Audio	12CM	About 74 minutes

Note:

Due to the wide range of DVD, VCD, Super VCD discs available, the playback time here provided may differ from the actual playback times.

Made under a licence from Dolby Laboratories, Inc. "Dolby", "Pro Logic" and the double D icon are registered trademarks of Dolby Laboratories, Inc.

Region code



This player is intended for playing DVD video designated by the code for region 2 or ALL (discs designated in this way can be played by all DVD players). You can find the region code of the disc on its label, the region code of the player is located on its rear or under side. After inserting a DVD with a different than the above mentioned region code into the player a message will appear on the screen "Check region Code" and the playback of the DVD will be rejected.

Serial number of the device

The serial number of the device is unique and unequivocally identifies your device.

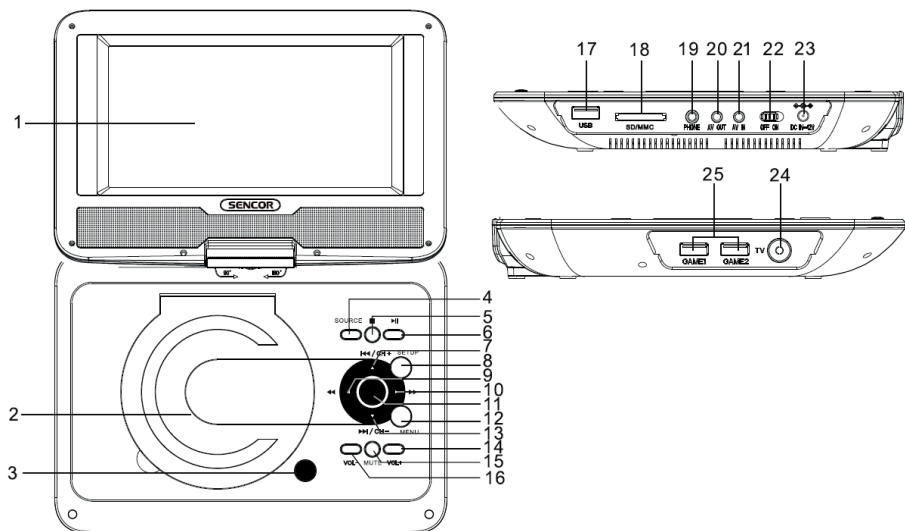
Enter the serial number of your device together with other details necessary for the definite identification of your device below.

Serial number: _____

Date of purchase: _____

2. Description of the device

Model SPV 8012M4

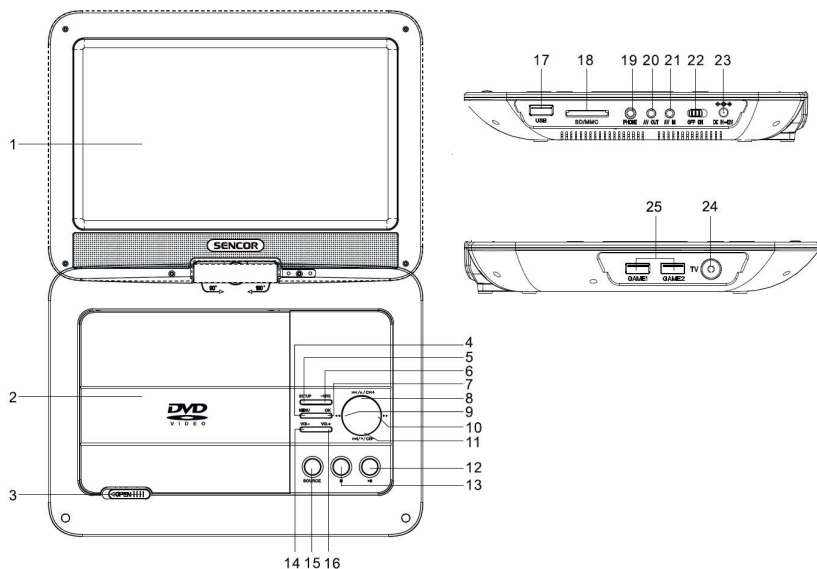


- | | |
|---------------------------------|---|
| 1. LCD display | 14. Increase volume VOL+ button |
| 2. Disc drive | 15. MUTE button |
| 3. OPEN disc drive button | 16. Decrease volume VOL- button |
| 4. SOURCE button | 17. USB socket |
| 5. STOP button | 18. SD/MMC card slot |
| 6. Play / pause button | 19. PHONE jack for connecting headphones |
| 7. Previous/up/CH+ button | 20. AV OUT output jack |
| 8. SETUP button | 21. AV IN input jack |
| 9. Left / fast rewind button | 22. Main switch |
| 10. Right / fast forward button | 23. DC IN power supply jack |
| 11. OK button | 24. ANT jack for connecting an additional antenna |
| 12. MENU button | 25. GAME1, GAME2 slot for connecting game control devices |
| 13. Next/down/CH- button | |

Note:

When the power supply indicator light is lit green, the device is in operation. When it is lit red, the device is in stand-by mode. When the indicator light is flashing red, the battery is recharging. When it is lit red, the battery is recharged.

Model SPV 8013M4

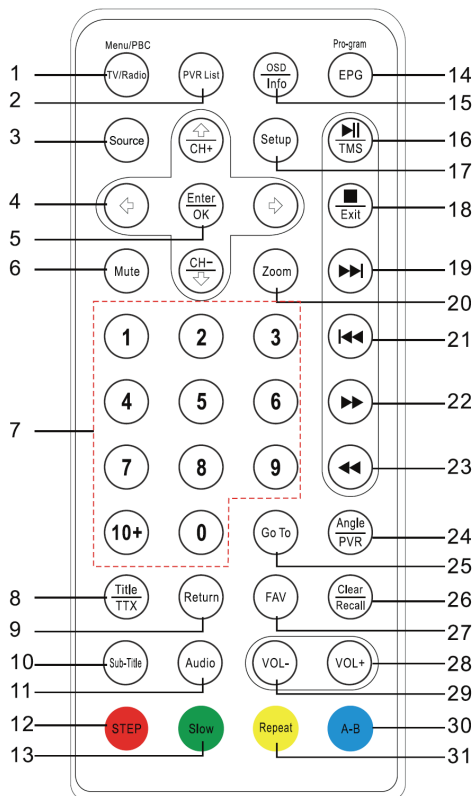


- | | |
|---|---|
| 1. LCD display | 14. Decrease volume VOL- button |
| 2. Disc drive | 15. SOURCE button |
| 3. OPEN slide button for opening the disc drive | 16. Increase volume VOL+ button |
| 4. MENU button | 17. USB socket |
| 5. SETUP button | 18. SD/MMC card slot |
| 6. MUTE button | 19. PHONE jack for connecting headphones |
| 7. OK button | 20. AV OUT output jack |
| 8. Previous /up/CH+ button | 21. AV IN input jack |
| 9. Fast rewind button | 22. Main switch |
| 10. Fast forward button | 23. DC IN power supply jack |
| 11. Next/down/CH- button | 24. ANT jack for connecting an additional antenna |
| 12. Play / pause button | 25. GAME1, GAME2 slot for connecting game control devices |
| 13. STOP button | |

Note:

When the power supply indicator light is lit green, the device is in operation. When it is lit red, the device is in stand-by mode. When the indicator light is flashing red, the battery is recharging. When it is lit red, the battery is recharged.

3. Remote control



1. TV/Radio / Menu/PBC button
2. PVR List button
3. Source button (Source)
4. Left, right, up/CH-, down/CH- button
5. Enter/OK Button (Confirmation)
6. Mute button (Mute the sound)
7. Numerical buttons
8. Title/TTX (Title/teletext) button
9. Return (Return) button
10. Sub-Title (subtitles) button
11. Audio (Sound) button
12. STEP (Stepping) button
13. Slow (Slow playback) button
14. EPG / Pro-gram button
15. OSD / Info button
16. Play/pause, TMS button
17. Setup Button (Settings)
18. Stop / Exit (Exit) button
19. Next button
20. Zoom (zoom) button
21. Previous button
22. Fast forward button
23. Fast rewind button
24. Angle / PVR (Angle / PVR) button
25. Go To (Skip to) button
26. Clear / Recall (Clear/Recall) button
27. FAV (Favourites) button
28. VOL + button
29. VOL - button
30. A-B button
31. Repeat (Repeated playback) button

Using the remote control

To control the device using the remote control, point the remote control at the device and then press the button with the required function. The effective range of the remote control is up to about 5 meters with a maximum deviation of +/- 30° from the perpendicular direction to the reception sensor of the remote control on the front side of the device. The falling capacity of the batteries gradually reduces the remote control range.

- There must be no solid obstacles in the area between the remote control and the device when the remote control is being used.
- During standard use the lifetime of batteries in the remote control is about 1 year. When the effective range of the remote control is substantially reduced or when there are problems with its use, change both the batteries in the remote control.
- If you will not be using the remote control for a longer period of time, take out both batteries - in this way you will prevent potential damage caused by their leakage.

The batteries must not be exposed to excessive heat, such as direct sun light, fire, etc.

The incorrect use of batteries may cause the leakage of the electrolyte and corrosion. To ensure that the remote control works correctly, proceed according to the instructions below:

- Do not insert the batteries in the wrong polarity orientation.
- Do not charge, heat, open or short circuit the batteries.
Do not throw batteries into a fire.
- Do not leave discharged batteries in the remote control.
- Do not combine various types of batteries or new and old batteries.
- If you will not be using the remote control for a longer period of time, remove the batteries to prevent potential damage caused by a subsequent battery leakage.
- If the remote control is not working correctly or its operational range is reduced, change all batteries for new ones.
- If electrolyte leaks out from the batteries, have the remote control cleaned at an authorised service centre.

Note:

Remove the batteries if you will be storing the device or not using it for an extended period of time.

4. Basic controls

4.1. Turning the device on and off

4.1.1. Turning on the device

Connect the power adapter plug to a power socket, insert the connector into the power supply jack of the device and move the **main switch** to the ON position. The device will turn on and the DVD logo will appear.

4.1.2. Turning off the device

Move the **main switch** to the OFF position and the device will turn off.

4.1.3. Recharging the battery

Connect the power adapter plug to a power socket, insert the connector into the power supply jack of the device and the built-in battery will be recharged. During the recharging process the recharging indicator light will be lit red. A flashing battery pack recharge symbol will appear in the bottom right hand corner of the display. The indicator light will turn off as soon as the battery is recharged.

Note:

There are two methods for recharging the device:

1. Recharging in the off state. Recharging is faster when the device is turned off (about 2 – 3 hours).
2. Recharging in the on state. Recharging is slower when the device is turned on (about 6 – 8 hours).

Note:

You can use the device even without the power adapter. In such a case the recharging indicator light will not be lit. Nevertheless, it is necessary to regularly check the power level of the battery. When it is almost flat, the device will turn off automatically and you will not be able to turn it on again. If this happens, connect the power cord plug to a power socket, insert the connector into the power supply jack of the device and you will again be able to turn on the device and use it.

4.2. Playing DVD discs

1. Turn on the device as described above. Depending on the model, either press the **OPEN** button or slide the **OPEN** button in the direction of the arrow. Insert an appropriate disc into the disc drive. If another disc is already inserted inside the player, take it out and only then insert the appropriate disc.
2. Check that the disc is properly seated. Close the cover.

Note:

Before first use remove the protective foil and transport lock of the DVD mechanism. Check that you have chosen the DVD disc playback mode.

4.3. Playback from USB devices

1. In the DVD mode, insert a USB disk into the USB slot on the side of the device.
2. If no disc is inserted, the system will automatically read the USB device and start playback from the first file (as a rule, an MP3). To select the file type, press TITLE and then select left/right the type.
3. If a disc is inserted inside the device, the system will automatically start playing the disc. So you need to press the **USB/CARD/DISC** button, select the USB function and confirm. The device will switch to USB mode and start playback from the first file (as a rule, an MP3).
4. Press the **RETURN** button to return to a file in the directory. Use the direction buttons to select the file you wish to play.

Note:

Check that the disc drive is closed. Insert USB devices in the correct direction. Do not use brute force as this could damage or destroy the USB and the device. Via USB you will be able to playback the following files: MP4, MP3, JPG or VCD. The device supports 4 selected file formats, including music, video (AVI, DivX, Xvid), games and images.

4.4. Playback from card readers

1. While in DVD mode, insert an appropriate SD / MMC card into the SD / MMC card slot.
2. If no disc is inserted, the system will automatically read the inserted card and start playback from the first file (as a rule, an MP3). To select the file type, press TITLE and then select left/right the type.
3. If a disc is inserted inside the device, the system will automatically start playing the disc. So you need to press the **USB/CARD/DISC** button, select the CARD function and confirm. The device will switch to card reader mode and start playback from the first file (as a rule, an MP3).
4. Press the **RETURN** button to return to a file in the directory. Use the direction buttons to select the file you wish to play.

Note:

Check that the disc drive is closed.

Insert the card in the correct direction. Never the other way around. Do not use brute force as this could damage or destroy the SD/MMC cards and the device.

Via CARD you will be able to playback the following file types: MP4, MP3, JPG or VCD.

The device supports 4 selected file formats, including music, video (AVI, DivX, Xvid), games and images.

4.5. Audio/Video output

You can connect the device to a TV via an AV cable.

Connection:

White = Left audio

Red = Right audio

Yellow = Video



4.6. Using multimedia functions

4.6.1. Selecting a channel

On multi-channel CD or VCD discs press the AUDIO button and select the left channel, right channel or stereo.

4.6.2. Fast playback

Use the **fast forward / fast rewind** buttons to search for the desired content on the disc.

Each time the button is pressed the speed will change as follows:

2 X → 4 X → 8 X → 20 X

Each time the button is pressed the speed will change as follows:

2 X → 4 X → 8 X → 20 X

Press the **play / pause** button to resume normal playback.

4.6.3. Repeat playback

You can repeatedly playback a selected A/V file, track or everything. Select one of the following repeat playback modes:

Playback single track: press the **REPEAT** button repeatedly until "single repeat" appears on the display. The appropriate track will be played repeatedly.

Repeat one group: press the **REPEAT** button repeatedly until "repeat disc" appears on the display. The whole group (disc or directory) will be played back.

Canceling repeat playback: press the **REPEAT** button repeatedly until the display is empty.

4.6.4. Closing a MENU

Press the **MENU** button to close a menu. Press again to show it again.

4.6.5. Slow-motion playback

During normal playback press the **SLOW** button on the remote control to enter the slow-motion playback mode. Each time the button is pressed the mode will change as follows:

1/2 → 1/3 → 1/4 → 1/5 → 1/6 → 1/7 → normal playback

4.6.6. Searching for music / time

When a disc is inserted, press the **GOTO** button and use the direction buttons to select one of the following options:

1. Title: show the current title, playback of the selected title number
2. Section: show between sections; playback of the selected chapter number
3. Time: show current playback time, go to the selected time

After selecting an option, press the **ENTER** button to confirm and exit the menu.

4.6.7. ZOOM function

You will be able to increase or decrease the size of the image on the screen.

During playback press the **b** button and repeatedly press the **ZOOM** button to select the appropriate mode.

Zoom 2 → Zoom 3 → Zoom 4 → Zoom 1/2 → Zoom 1/3 → Zoom 1/4 → normal display

4.6.8. Display

Press the **INFO** button to show information about the disc being played, such as: topics or chapter times. The information shown depends on the data stored on the inserted disc.

4.6.9. Programmed playback

Press the **PROGRAM** button to enter the programmed playback menu. Here you will be able to select your own disc playback sequence.

After finishing, press the play/pause button or the **ENTER** button and the device will start playback according to the set sequence.

If you want to cancel programmed playback, enter the programmed playback menu and select Cancel (Cancel). Press the confirmation button or press the **STOP** button twice.

5. System settings

Press the **SETUP** button to enter the settings menu. After completing setup, press the **SETUP** button to return to the previous menu.

Use the **left / right** buttons to navigate / select in a menu.

The **up / down** buttons are used to move up / down and to go to a selected item.

Press the **ENTER/OK** button to confirm.

5.1. System settings

Language settings (Language)

Select a language for the OSD: English, Czech, Slovak and others.

OSD display duration (OSD duration)

5.1.1. Aspect ratio

Select the relevant side aspect ratio for the content being played back.

4:3 panorama – a wide-angle picture will be shown on the entire screen but certain parts may automatically be removed.

4:3 mail – a wide-angle picture will be shown on the entire screen but in the top and bottom parts of the screen there will be black stripes.

16:9 wide-angle – a wide-angle picture will be shown on the entire screen without limitations.

Reset: Restore factory settings.

5.1.2. Picture

Picture mode: Standard (Standard), Vivid (Vivid), User (User).

Brightness

Contrast

Saturation

Sharpness

Hue

5.1.3. Player settings

TV system: NTSC, PAL and AUTO (automatic).

Reset

Screensaver

Password

Rating

1. KID SAFE

2. G

3. PG

4. PG13

5. PG-R

6. R

7. NC-17

8. ADULT (adult, without restrictions)

Mixing (AUDIO output): select from: LT/RT, STEREO, VSS.

5.2. Basic functions

Check that the antenna and the power supply are correctly connected.

5.2.1. Selecting a source

Turn on the device and press the **SOURCE** button on the remote control. Use the up/down buttons to select a source and press the **ENTER** or **OK** button to confirm.

5.2.2. Display

Press the **DISPLAY** button to show information about the current signal source.

5.2.3. MUTE button

Press the **MUTE** button in any mode to immediately silence the system. Press again to renew the initial volume.

5.2.4. Numerical buttons

Select a TV channel or music file.

5.2.5. Setting the volume

Set the volume using the **VOL+/-** buttons.

5.2.6. Changing channels

In the TV reception mode use the **CH+/-** buttons to change between channels.

5.2.7. Game function

Insert a disc with games and connect a joystick. Select the appropriate game.

6. DVB-T reception

6.1. Setting up the DTV channel search

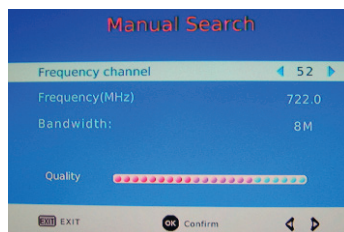
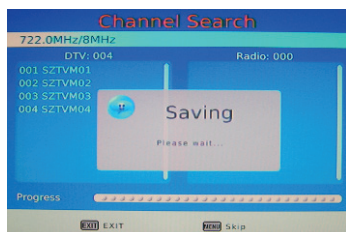
Set the country of installation before the channel search.

Press the **SOURCE** button and select the DTV mode.

1. Press the **SETUP** button to make a selection from the following menu:



2. Use the up / down buttons to select the automatic search or manual search.



Note:

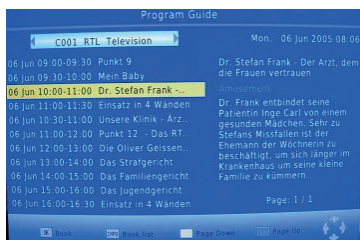
In the automatic search mode, press the MENU button to skip to the next frequency. Press the EXIT button to exit the search menu.

6.2. Program menu

1. Press the **SETUP** button to display the following menu:



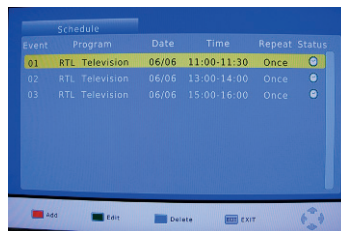
- Select EPG or press the **EPG** button on the remote control to go directly to the EPG menu.



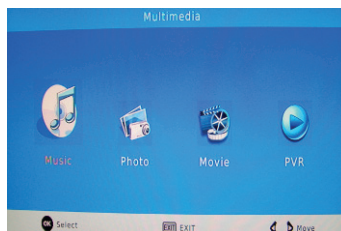
Note:

The EPG menu shows a 7-day TV program. The provided EPG information is the responsibility of the broadcaster of the given channel.

- In the EPG menu, press the OK button and select "view and recording" (see picture above).

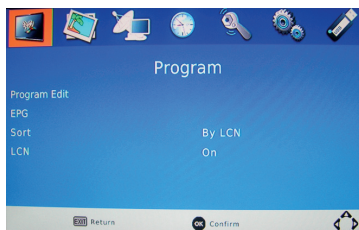


- To playback the recording made using the PVR function, press the **SETUP** button and select the USB menu. Enter the item Multimedia and then select PVR.

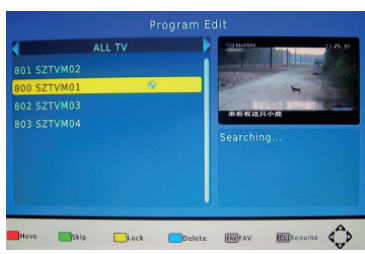


6.3. Program edit

- Press the **SETUP** button on the remote control and select the OSD menu:



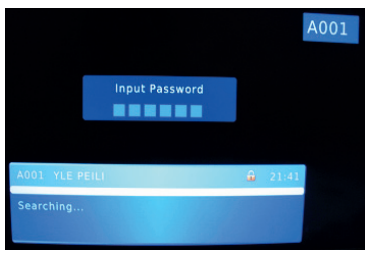
- 2. Select the option program edit and enter the menu. Use the left/right buttons to switch between the TV and radio mode. According to the displayed symbols, set the function film / skip / lock / delete / favourites / rename.



- 3. Enter the program edit menu and press the **RECALL** button to rename the title. Press the **ENTER/OK** button to confirm and return.

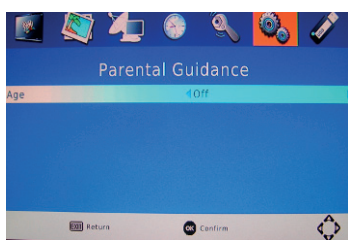


- 4. Enter the program edit menu and set the channel lock. This channel will be blocked and a valid password will be required to view it.



6.4. Parental Guidance

Press the **SETUP** button on the remote control and select the System menu. Here, select parental guidance and set the rating.



6.5. Digital audio settings

Press the **SETUP** button on the remote control and select the Options item and then Digital audio. Use the left/right buttons on the remote control to switch between PCM / RAW / off.



Note:

PCM mode: all audio outputs going through the loudspeakers or SPDIF are in PCM format

RAW mode: only AC3 and DTS output formats will go to SPDIF.

Off mode – audio output will only go through the loudspeakers, no audio will go to SPDIF.

6.6. Setting up video output

Press the **SETUP** button on the remote control and select Picture. Here you can setup the side aspect ratio, resolution, TV format, video output.

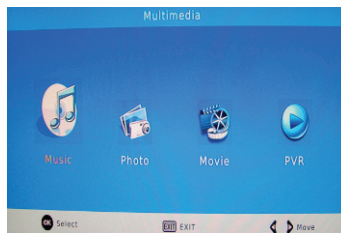


Note:

Video output can only be switched for a SCART connection to an external TV.

6.7. USB multimedia function

1. Press the **SETUP** button on the remote control and select the Multimedia and A/V source:



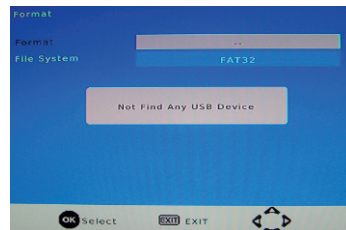
2. Select USB and enter the photo menu (Photo) to set the slide time, slide mode and the side aspect ratio.



3. Select USB and enter the movie menu (Movie) and then set the subtitle font, background and font colour.



4. Select USB and enter the PVR menu. Here, check information about the storage location, set the timeshift size or format the storage device.



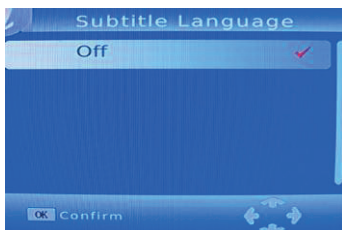
6.7.1. Playing movies

1. Select the Multimedia menu and select Movie (Movie). A list of files will be shown (see picture below). Select the file you want to play and press the OK button. Then press the red button to display full-screen, or press the play button to play it in full-screen mode. The functions fast forward / fast reverse, slow-motion playback, pause, subtitles and sound will also be active.

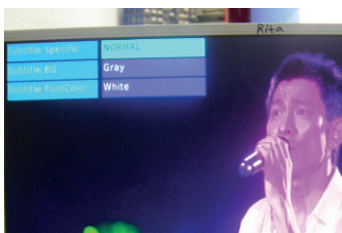


2. Subtitles and audio

- A. Press the Subtitle button on the remote control and select the subtitle language from the list provided (same controls as for USB or DTV).
- B. Press the AUDIO button on the remote control for audio settings (same controls as for USB and DTV).



(Subtitle / audio menu in DTV mode)



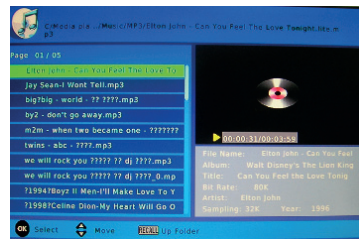
(subtitle/audio mode in the movie/PVR mode)

6.7.2. Playing music

Press the **SETUP** button on the remote control and select the Multimedia menu. Here select Music (Music). A list of files will appear. Select the file you want to play and press the **OK** button to start playback. The functions fast forward / fast reverse, slow-motion playback, next/previous track selection, pause and stop will also be active.

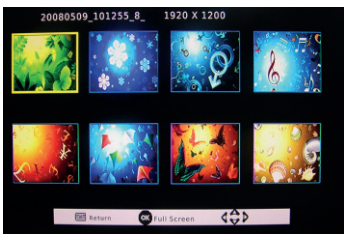
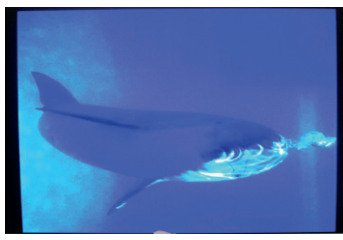
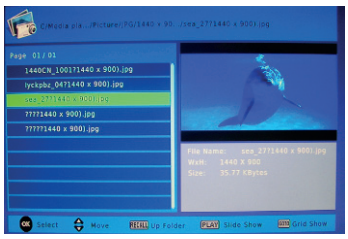
Note:

If you want to playback music or a photo, enter the music menu to playback music. The press the **RECALL** button to return to the previous menu and select a photo. Then it is possible to playback music and photos at the same time.



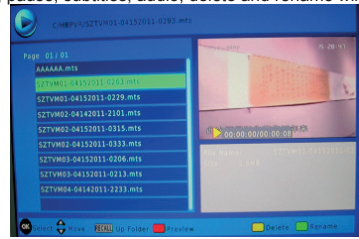
6.7.3. Displaying photos

Press the **SETUP** button on the remote control and select the Multimedia menu. Here select Slide (Photo). A list of files will appear. The functions previous/next photo, playback, pause, stop, zoom, rotate, miniatures will be available.



6.7.4. Playing PVR files

Press the **SETUP** button on the remote control and select the Multimedia menu. Here select PVR. The functions fast forward / fast reverse, previous / next track, play, pause, subtitles, audio, delete and rename will also be active.



7. Troubleshooting

The disc cannot be played back.

Check whether the disc is correctly inserted and secured.

Check that the disc is inserted with the printed side facing upwards.

Check whether the disc is dirty, scratched or deformed in any way. Clean dirty discs, however do not use scratched or deformed discs.

Check whether the device supports the inserted disc.

Remote control is not working.

Remove the obstacle between the device and the remote control.

Point the remote control at the remote control sensor on the device.

Check whether the batteries in the remote control are flat.

The inserted SD/MMC card or USB device is not being read.

Check that you have inserted the SD/MMC card or USB device correctly.

Check that it is supported by the device.

It is not possible to turn on the device.

Check whether you have moved the main power switch to the ON position.

Check whether the battery pack is flat.

Incorrectly displayed picture (during a TV connection).

Check whether you have correctly connected the AV cable.

Check the screen, colour and TV format settings.

The device does not react when buttons are pressed.

Check whether the disc is scratched, dirty or deformed.

Check the condition of the battery pack.

Turn off the device, wait several minutes and then turn it on again.

Reception of TV channels without colour or audio.

Check the colour and audio settings.

8. Technical specifications

Picture	Video D/A converter	10 bits
	Horizontal resolution	500 lines
Audio	Frequency	20 Hz-20 KHz
	Dynamic range	80 dB
	Audio D/A converter	96 KHz / 24 bits
Parameters	Video resolution	640×234
	LCD	9"-16:9
	Supported formats	DVD+R/W, DVD-R/W, DVD, CD-R, CD-RW, VCD, SVCD, PHOTO-CD, JPEG, MP3, MP4, DIVX.
	Weight	About 1 kg
	Size	290 x 175 x 40 mm
	TV format	PAL / NTSC / AUTO
	DVB-T	MPEG-4
	Impedance of the antenna	75 ohms
Operating temperature		0 – 40°C
Power source	Power adapter	Input 100 – 240 V ~ 50Hz/60HZ Output DC 12 V / 1.5 A
Power output		Less than 12 W
Accessories	AV cable, power adapter, remote control, user's manual, car recharger, headphones, antenna	

Note:

The technical specifications provided above may change without prior notice.

INSTRUCTIONS AND INFORMATION REGARDING THE DISPOSAL OF USED PACKAGING MATERIALS

Dispose of packaging material at a public waste disposal site.

DISPOSAL OF USED ELECTRICAL AND ELECTRONIC APPLIANCES



The meaning of the symbol on the product, its accessory or packaging indicates that this product shall not be treated as household waste. Please, dispose of this product at your applicable collection point for the recycling of electrical & electronic equipment waste. Alternatively in some states of the European Union or other European states you may return your products to your local retailer when buying an equivalent new product. The correct disposal of this product will help save valuable natural resources and help in preventing the potential negative impact on the environment and human health, which could be caused as a result of improper liquidation of waste. Please ask your local authorities or the nearest waste collection centre for further details. The improper disposal of this type of waste may fall subject to national regulations for fines.

For business entities in the European Union

If you wish to dispose of an electrical or electronic device, request the necessary information from your seller or supplier.

Disposal in other countries outside the European Union

If you wish to dispose of this product, request the necessary information about the correct disposal method from local government departments or from your seller.



This product meets all the basic EU regulation requirements that relate to it.

Changes to the text, design and technical specifications may occur without prior notice and we reserve the right to make these changes.

