

SENCOR®

SCR 4600



EN ■ User Manual

CZ ■ Návod k obsluze

SK ■ Návod na obsluhu

HU ■ Használati utasítás

PL ■ Instrukcja obsługi

4K CAMERA

4K KAMERA

4K KAMERA

4K KAMERA

4K KAMERA

Table of Contents

1. Important safety instructions.....	3
2. Description and control of the unit.....	4
3. Troubleshooting.....	13
4. Technical Data	14

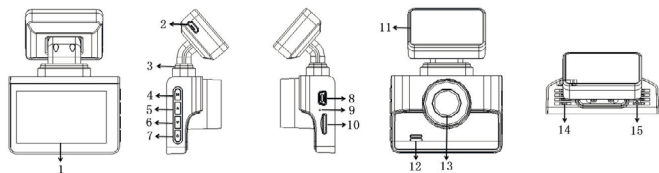
1. Important safety instructions

Carefully read this manual before using the device. It contains important information about safe use, operation and possible troubleshooting. Keep the user's manual in a safe place for possible future reference. If you are planning to sell or hand the unit over to another person, please include also the user's manual so that the new owner can also get acquainted to the unit.

Notice

- Protect the motor from scratching.
- Do not use force to connect the USB cable. Always make sure that the device you are connecting the USB cable to is in the off state.
- Do not insert any other connectors to the USB port than those specified for the given port size.
- Be careful when handling the monitor to avoid damage.
- Protect the unit from shocks. Do not expose the unit to extreme temperatures, direct sunlight etc.
- Before installation, please degrease the glass contact area, then make sure the holder is firmly attached to prevent the camera from falling.
- Take care and do not apply force when inserting the microSD card.
Before inserting the microSD card, make sure to turn the unit off.
- As there is a wide range of microCD cards available on the market, full compatibility with all of them cannot be guaranteed.
- Do not expose the unit or accessories to dripping or splashing water.
Protect them from moisture, dust and dirt. Do not put any containers filled with water, e.g. vases on the unit.
- Do not expose the unit to heat sources, such as sunshine. Do not place a naked flame source, such a candle on or in the vicinity of the unit.
- Use only a dry cloth for cleaning. Never, under any circumstances use petrol, thinners, ammonia or any similar substances.

2. Description and control of the unit



2.1. Description and control of the unit

- 1) **Screen**
- 2) **USB connector**
Powering the camera and charging its battery.
- 3) **Magnet and power supply contacts**
- 4) **MODE/Menu button**
Short press to switch between Video/Photo/Playback. Long press to enter the Settings menu. Then short press to switch between Mode Settings, General Camera Settings and Disable Settings – Normal Working Mode.
- 5) **Up button**
Scroll up in the menu.
- 6) **Down button**
Scroll down in the menu.
Turns the microphone off/on during recording.
- 7) **OK/Switch**
Confirmation button in the menu. In normal mode, start/stop recording or take a photo.
A longer, 4sec press turns the camera on or off. The camera can only be switched off with the button when recording is not running.
- 8) **Data connector for transmission to PC** (not to camera)
- 9) **Status indicator**
The blue indicator is lit when power is connected. Flashes slowly when recording.

10) microSD memory card slot

- Inserting the card: insert the card carefully into the unit while it's POWERED OFF in the correct direction (with the label facing the screen, the gold-plated contact areas pointing forward and inside the unit, and the card body recession pointing downward). Insert the card e.g. with your nail about 1mm under the surface until you hear a slight clicking sound of the lock mechanism. When released, the card be seated in place.
- Ejecting the card: Press the card e.g. with your nail about 1 mm under the surface until you hear a slight clicking sound of the lock mechanism. Hold the card as it is released, otherwise it will pop out sharply.

11) Adhesive tape**12) Loudspeaker****13) Lens****14) Microphone****15) RESET button**

Shuts down the camera if it becomes unstable or unresponsive to control, e.g. due to excessive heat. Press the button with a thin object without a tip, e.g. an open paper clip.

Notes:

- a) for recording it is necessary to use a quality card with fast writing, at least class 7 and a suitable size. Try the size of the card for your use in advance, a small card can soon be filled with regular recording and locked files. We recommend to use at least 16GB, but no more than 128 GB. The recording may be affected not only by the specified speed class, but also by the speed uniformity within the entire card memory range. When inserting a new card, **always format it in the camera.**
- b) despite the utmost compatibility efforts, the usability and undisturbed operation with all commercially available memory devices cannot be guaranteed. If the card function or record contents does not meet your expectations, format the card in your PC, then also in this unit. If the card malfunction persists, please use other card and a faster one, if possible.



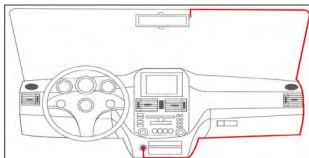
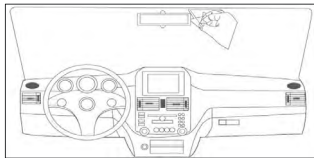
CAUTION: the inserted card uses technology sensitive to high temperatures or thermal shocks. Therefore, avoid leaving these memories in high-temperature environments (such as behind a car window in summer) and/or exposing them to temperature surges (such as in winter). This could lead to temporary or permanent damage to the memory stored contents.

2.2. Glass mount

Insert the unit carefully in the mount on car glass or other suitable smooth surface. Keep the contacts clean so that the camera can be switched on reliably.

Installing the mount on the car glass: Choose a place with a camera view that does not obstruct the driver's view. Peel off the adhesive tape (11) and apply slight pressure to a smooth, clean and degreased glass surface inside the car cab.

Also, make a couple of test recordings with different resolutions and camera positions to match the result to your expectation.



CAUTION: Do not use excessive force when handling and working with the mount and the camera. Both parts are lightweight and are not exposed to any mechanical stress during operation.

2.3. Battery and charging instructions

Battery charge indicator:



Full



Almost full



Weak

Power supply options: car adapter, PC USB port, external power adapter (supplied separately).



CAUTION: Use only 5V power supply, other voltage values could damage the unit.

When connected to the car ignition key, the unit turns on and starts recording when the key is turned to the "Accessories" position, and stops recording and turns off when the ignition key is turned off. The entire charging process of a fully discharged battery takes up to 180 minutes.

The camera built-in battery serves only as a buffer to bridge transient power states and does not prolong the camera operation with no power connected.

2.4. Description of basic and special functions

- **G-sensor**

An exceptional acceleration sensor, e.g. in the event of an impact or crash, locks the current file against automatic overwriting. Can be set in 3 stages or switched off. Try a suitable option to prevent the sensor from being activated, for example by normal traffic on road bumps, and filling the card with unwanted non-erasable files. This would prevent the camera from recording again.

- **Turning on and off**

By connecting the power supply, the camera turns on and starts recording and a few seconds after disconnecting the power supply, it stops recording and turns off. Most cars have a dashboard socket controlled by the ignition key, so you don't have to operate the camera manually or fiddle with the power cable.

Note: the camera starts recording in the "Accessories" key position when the engine is stationary. If the on-board voltage drops when the engine is started later, the camera will enter shut-down mode and stop recording. Press OK briefly to continue recording.

- **Formatting the card**

Creates a file system on the card for efficient recording. Recommended for any newly inserted card.



ATTENTION: The formatting will irreversibly erase the previous contents of the card!

Tip: due to the extreme stresses that can be placed on the memory card (vibrations, temperature fluctuations, humidity), it is advisable to occasionally check the integrity of the card's memory space on the computer, or reformat it on the computer and then on the camera. Cards with errors are recommended to be discarded from further use.

- **Setting the date and time**

The time and date can be set manually in the menu.

Working with USB

In addition to the power supply, the connector (8) is used to transfer data from the memory card in the camera to the computer. But not from the computer to the card (deletion, formatting), manage the files either with the camera functions or by moving the card to the card reader on the computer. The connected card is reported as an additional disk drive.



The Mass Storage message is lit on the camera display.

2.5. Putting into operation, recording


1. Charge the device outside the car, long press (5s) the On/Off button to turn it on and adjust it to your needs as described later in this manual. After the initial procedure, press the On/Off button for a longer time (up to 3s) to switch off the device.
2. Place the camera with the mount in a suitable place on the car glass and turn on the camera manually or connect it to a switched power supply for automatic switching.
3. When manually switching the camera on, turn it off manually after the recording is finished (not necessary if you have automatic shut-down).

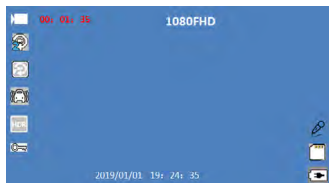
2.6. Operating modes and their use

Switching the operating modes with the MODE button

1. Press On/Off to turn on the device, after the splash screen, the operation screen with status icons and indicators will appear. If power is connected (e.g. in a car), the camera starts recording immediately, in which case stop it by pressing REC/OK button.
2. Press MODE to switch among video recording mode (camera),  taking photos (Photo)  and previously taken recordings. The operating icons are shown in the top left corner of the screen.

Recording and settings

While the unit is in the camera mode ( icon), press OK to start recording. In the left corner of the screen, the recording/loop time starts to slowly tick down, in red. Press OK to stop recording and the indicators will stop flashing.



Note: If the screen is off in power save mode, the first press of the button turns it on first, only the second press performs the desired action.

During recording, audio recording can be turned off/on by pressing DOWN (crossed-out microphone icon). You cannot make any adjustments on the unit while recording is in progress. Files are sized according to loop length and resolution. Example: 5 min 720P is 600 MB, 5 min 1080FHD is 900 MB. Shorter loops are recommended.

Parameter settings (MENU)

Long press the MENU button to access the mode settings, and another press to access the device settings. You can press again to return from both settings to the operating mode. Press OK to confirm each item, select UP/DOWN, confirm again, then press OK to return.

- Resolution: 1080P (1920×1080, 30 fps), 720P (1280×720, 30 fps), VGA (640×480, 30 fps)
- Loop: 1 min/2 min/5 min – an individual time interval duration to be stored in one file before next file is created.
- High Dynamic Range: Off/On – recording with higher dynamics in the image
- Exposure: -2...0...+2 – scene light correction
- Motion detection On/Off – recording will start automatically only if there is a big motion in the scene being shot (car movement) and stops automatically after about 1 minute.
- Audio recording: Off/On – the cab sound is only recorded by the built-in microphone if Audio is on here.
- Date Stamp: Off/Zap – when enabled, the date and time is recorded in the image according to the internal clock. Don't forget to set them up!
- G-Sensor: Off/Low /Medium/High – depending on the set sensitivity when the limit value is exceeded (shock, accident), the built-in acceleration sensor issues a command to protect the given file against automatic deletion.

Please check the sensitivity in your application so that files are not unnecessarily marked as locked even under normal conditions (road bumps, rail crossing, etc.). The sensor can be also completely disabled.

Parking mode

There is a special mode to create a short 20s video recording in case of hitting your stationary car to capture the offender. With the camera powered off.

Active parking mode is symbolised by the letter "P" at the top of the screen.

To enable the parking mode, proceed as follows:

- 1) In the unit menu, select Off to disable the parking mode.

Possible problems:

- a) When the battery power is low, the camera will turn on, detect low power, and turn off again. Keep the camera battery charged. If the camera is connected to the power, recording will not end after 20 s.
- b) The camera may turn on when you enter the car, but you don't set the ignition key in the ON position immediately after this. You set the ignition key to the ON position only around the 20 s recording interval while the camera is powering off. The camera will complete the powering off procedure and will not be powered on again. Turn on the camera manually.
- c) When the ignition key is set to the ON position during the recording interval in case of a longer stop. This is a conflict between the automatic internal powering off and external powering on.

Taking photos and setup


While the unit is in the photo mode  icon), press OK to take a picture.

Parameter settings (MENU)

One press of the MENU button takes you to the mode settings, two presses to the device settings. You can press again to return from both settings to the operating mode. Press OK to confirm each item, select UP/DOWN, confirm again, then press OK to return.

- Resolution (12M, 10M, 8M, 5M, 3M, 2M, 1.3M, VGA)
- Continuous shooting/Multiple shots (Off/On) – take 4 shots in succession
- Quality (Fine/Normal/Economy) – a higher quality means larger files
- Sharpness – (Strong/Normal/Fine) – display edges in the image
- White Balance (Auto/Daylight/Cloudy/Bulb/Fluorescent)
- Colour (Normal / Black and White / Sepia)
- ISO (Auto/100/200)
- Exposure (+2...0...-2)
- Anti-Shaking/Picture stabilisation (Off/On)
- Quick Review (Off/2 sec/5 sec) – display the photo you just took
- Date Stamp – insert date/time into photo

Viewing and setup

When the unit is in Viewing mode (for video, the film-strip icon; for photos, the  icon), the last file (recording or photo) is prepared for viewing first. You can scroll through the files with the UP / DOWN buttons and select by pressing OK. If the selected file is a video file, it can be started by pressing OK and the volume can be changed with the UP/DOWN buttons during playback. Press OK to stop the recording playback.

Delete

In playback mode, you can delete the currently displayed file.

Long press the MENU button and select the DELETE function. In the menu that appears, select whether to delete this one file (Delete Current) or all video files and photos (Delete All). Then press OK to confirm your intention or select Cancel to reject in the next menu. Write-protected files cannot be deleted directly, you must first unlock them.

Protection

In playback mode, you can also manually protect the currently viewed file from being deleted by the system. Long press the MENU button and select the PROTECTION function. In the menu that appears, select the operation: Lock this/Unlock this/Lock all/Unlock all. Locked files are protected against deletion, but any formatting of the card will permanently delete all content, regardless of protection.

If you only want to delete some of the protected files, you must unlock them before deletion. Similarly, to delete the files locked by the system (by the G-sensor command), they must be unlocked first.

Device settings

Setting the general properties of the device is the second option next to setting the individual modes. Enter it by pressing the MENU button, pressing the down arrow and confirming OK. You can press again to return to the operating mode. Press OK to confirm each item, select UP/DOWN, confirm again, then press OK to return.

- LCD screensaver/Shut-down LCD: Off/3/5/10 min – turns off the screen after a given time (without user control) and leaves the other operating modes unchanged to save battery power and minimize driving interference. To turn the screen back on, press any control button.
- Auto Power Off: Off/1 min/3 min – auto power off after a specified time of inactivity
- Language: please select according to your country.
- Frequency: 50 Hz/60 Hz – select to suppress light source flickering.
- Beep Sound: Off/On – audible signal of the buttons
- Date/time: press OK to move between the items: YY/MM/DD.
- Format: Formats the memory card for optimal use in the camera.
Use caution, formatting will permanently delete the records. Therefore, the device asks you to confirm the formatting, if you are sure, select YES or select NO to abort the formatting.
- Park mode – see description below.
- Default settings – you can restore the camera factory settings by selecting Factory reset (confirm Yes, exit No).
- Version – displays the software version.

3. Troubleshooting

Please read this before reaching out to your dealer or service.

- No pictures or recordings can be made.
Check if the inserted card is functional, contains enough free space and is not write-protected.
- The recording stops spontaneously.
Check the inserted card for integrity, format it in the unit or use another, faster card if possible. If the file system limit has been reached, please reduce the portions the recording is split into.
- "File error" message appears during video playback or picture viewing.
The file is corrupted due to a media error. Try to format the card or replace it for a new one.
- Blurred image
Check the lens for contamination and if necessary, clean it with soft wipes suitable e.g. for glasses.
- The photo colours are not faithful even under daylight.
Check the white balance in Settings.
- Stripe patterns in picture
The scene contains light with 50Hz or 60Hz frequency (according to your power grid). To compensate the stripe patterns, change the frequency in Settings.
- The unit's SW has stopped.
Press Reset to restart the unit.

4. Technical Data

LCD screen	2,3", HD, LCD
Lens	Wide-angle, high resolution
Video size	1080P/720P/VGA
Video format/codec	AVI, MJPEG
Photo resolution	12M/10M/8M/5M/3M/2M/1.3M
Photo format	JPG
Storage	MicroSD card up to 128 GB (not included)
Microphone/Speaker	Embedded
Line frequency	50Hz/60Hz
USB port	USB 2.0
Power	5V, 1A
Battery	180 mAh
Camera dimensions	68 × 33 × 52 mm
Camera weight	72g

Note: In order to improve the performance or matching, we reserve the right to make future changers without prior notice.

The original version is in the Czech language.

Manufacturer's address: FAST ČR, a.s., U Sanitasy 1621, Říčany CZ-251 01

INSTRUCTIONS AND INFORMATION ON DISPOSING OF USED PACKAGING MATERIALS

Dispose of used packaging material at a site designated for waste in your municipality.



DISPOSAL OF USED ELECTRICAL AND ELECTRONIC EQUIPMENT

This symbol on products or original documents means that used electric or electronic products must not be added to ordinary municipal waste. For proper disposal and recycling, take these products to designated collection points. Or in some European Union states or other European countries the products can be returned to the local retailer when buying an equivalent new product. Disposing of this product correctly helps save valuable natural resources and prevents potentially negative impact on the environment and human health by improper waste disposal. Ask your local authorities or collection facility for more details. In accordance with national regulations penalties may be imposed for the incorrect disposal of this type of waste.

For business entities in European Union states

If you want to dispose of electric or electronic devices, ask your retailer or supplier for the necessary information.

Disposal in other countries outside the European Union

This symbol is valid in the European Union. If you wish to dispose of this product, request the necessary information about the correct disposal method from the local council or from your retailer.

CE This product meets all the basic requirements of the applicable EU directives.

The text, design and technical specifications may be changed without prior notice and we reserve the right to make these changes.

SENCOR®

EN Warranty conditions

Warranty card is not a part of the device packaging.

This product is warranted for the period of 24 months from the date of purchase to the end-user. Warranty is limited to the following conditions. Warranty is referred only to the customer goods using for common domestic use. The claim for service can be applied either at dealer's shop where the product was bought, or at below mentioned authorized service shops. The end-user is obligated to set up a claim immediately when the defects appeared but only till the end of warranty period. The end user is obligated to cooperate to certify the claiming defects. Only completed and clean (according to hygienic standards) product will be accepted. In case of eligible warranty claim the warranty period will be prolonged by the period from the date of claim application till the date of taking over the product by end-user, or the date the end-user is obligated to take it over. To obtain the service under this warranty, end-user is obligated to certify his claim with duly completed following documents: receipt, certificate of warranty, certificate of installation.

This warranty is void especially if apply as follows:

- Defects which were put on sale.
- Wear-out or damage caused by common use.
- The product was damaged by unprofessional or wrong installation, used in contrary to the applicable instruction manual, used in contrary to legal enactment and common process of use or used for another purpose which has been designed for.
- The product was damaged by uncared-for or insufficient maintenance.
- The product was damaged by dirt, accident of force majeure (natural disaster, fire, and flood).
- Defects on functionality caused by low duality of signal, electromagnetic field interference etc.
- The product was mechanically damaged (e.g. broken button, fall).
- Damage caused by use of unsuitable media, fillings, expendable supplies (batteries) or by unsuitable working conditions (e.g. high temperatures, high humidity, quakes).
- Repair, modification or other failure action to the product by unauthorized person.
- End-user did not prove enough his right to claim (time and place of purchase).
- Data on presented documents differs from data on products.
- Cases when the claiming product cannot be indentified according to the presented documents (e.g. the serial number or the warranty seal has been damaged).

Manufacturer:

FAST ČR, a.s., U Sanitasu 1621, Říčany 251 01, Czech Republic

Visit www.sencor.com for detailed information about authorized service centers.

The original version of the instructions is in the Czech language, other language versions are made by the appropriate translation.

