

DVB-T2 SET-TOP BOX



- EN ■ User Manual
- CZ ■ Uživatelská příručka
- SK ■ Používateľská príručka
- HU ■ Felhasználói kézikönyv
- PL ■ Podręcznik użytkownika

Safety Information

TO MINIMIZE THE RISK OF FIRE AND ELECTRIC SHOCK, DO NOT EXPOSE THIS UNIT TO RAIN OR MOISTURE.



NOTICE
ELECTRIC SHOCK HAZARD – DO NOT OPEN



CAUTION

To minimize fire hazard or electric shock, do not remove the cover (or the rear panel) of the device. Leave all repairs to qualified service technicians.



The lightning bolt symbol, located in an equilateral triangle, alerts the user to the existence of uninsulated "dangerous voltages" inside the device that may be of such intensity as to constitute a risk of electric shock.



The exclamation point symbol within the equilateral triangle alerts the user to the existence of important operating and maintenance instructions in the instrument's accompanying documentation.



WARNING

TO MINIMIZE FIRE HAZARD OR ELECTRIC SHOCK, DO NOT EXPOSE THIS DEVICE TO RAIN OR HUMIDITY.



CAUTION

TO PREVENT FIRE HAZARD OR ELECTRIC SHOCK, ALIGN THE PLUG WIDE BLADE WITH THE SOCKET WIDE SLOT AND PUSH THE PLUG AS FAR AS IT GOES.



This symbol indicates that the appliance has double insulation between the dangerous mains voltage and the parts accessible to the user. In case of service, use only identical spare parts.

Do not expose the unit to dripping or splashing water or place objects filled with liquid, such as vases, on the unit.

Safety Information

During the manufacture of this set-top-box, great attention has been paid not only to meeting quality requirements, but also to providing safety which is a key factor in designing all of our products. But you must also do your part to ensure safety. Please read this document carefully before installing and using this set-top box.

This document contains important information that will help you learn how to correctly use this set-top box and its accessories to your satisfaction.



CAUTION

To minimize fire hazard or electric shock, do not remove the cover (or the rear panel) of the device. Leave all repairs to qualified service technicians.

Technical Data

TUNER AND CHANNEL	<ul style="list-style-type: none"> RF INPUT CONNECTOR × 1 (IEC TYPE, IEC169-2, SOCKET TYPE) FREQUENCY BAND: 174MHz ~ 230MHz (VHF) 470MHz ~ 862MHz (UHF) SIGNAL LEVEL: -15 ~ -70 dBm
DECODER	<ul style="list-style-type: none"> MPEG-2 MP@HL, AVC/H.264 HP @L4.1 MPEG-4 ASP, HEVC/H.265 HP @L4.1 SUPPORT MPEG-1 Layer 1,2/PCM/HE-AAC V1.0 ICE958 SPDIF/Dolby D+ and Dolby D 4:3/16:9 SWITCHABLE HDMI, SCART 16QAM, 64QAM, 256QAM
CONNECT	<ul style="list-style-type: none"> TUNER HDMI DATA PORT SCART ANTENNA INPUT × 1 HDMI OUTPUT × 1 USB 2.0 × 1 FOR TV × 1
ENERGY SOURCE	<ul style="list-style-type: none"> INPUT VOLTAGE 100~240V, 50/60Hz

Note:

Design and specifications are subject to change without notice.

Important Safety Measures

In the production of this set-top box, great attention was paid not only to meeting quality standards, but also to ensuring safety, which is a decisive factor in the design of each of our devices. But you must also do your part to ensure safety. This document contains important information that will teach you how to use this set-top box and its accessories properly so that you are satisfied. Please read them carefully before installing and using this set-top box.

Installation

1. **Read and observe the instructions** – Please read all safety and operating instructions before using this set-top-box. Follow all operating instructions.
2. **Keep the instructions** – Keep the safety instructions and operating instructions for future reference.
3. **Heed the warnings** – Observe all warnings on the set-top-box and in the operating instructions.
4. **Power** – This set-top box is powered from the mains or from the power plug of a DC adapter. To avoid the risk of electric shock, make sure that the power socket is connected correctly.
5. **Power Sources** – Only power sources that meet the ratings listed on the label on the rear panel of the set-top box may be used to power this set-top box. If you are not sure what type of power source is available at your home or office, contact your set-top box dealer or electrician. For set-top boxes designed to run on batteries or other power sources, please read the operating instructions.
6. **Overloading** – Do not overload the power outlets and extension cords to avoid risk of fire or electric shock. Overloaded power outlets and extension cords, frayed power cords, damaged or cracked conductor insulations and damaged plugs are dangerous and may lead to electric shock or fire. Inspect the cord on regular basis and if it appears that insulation damage or property deterioration may have occurred, ask a qualified service technician for a replacement.
7. **Power cord protection** – Route power cords so that they cannot be stepped on or damaged by placing objects on or against them, paying particular attention to where they exit the set-top box.
8. **Ventilation** – Cutouts and openings in the cabinet of the unit are used for ventilation to ensure reliable operation of the set-top box and to protect it from overheating. It is forbidden to block or cover these openings. These openings must never be blocked by placing the set-top box on a bed, sofa, mat or air heating device. Do not place this set-top-box in an enclosed space such as a fridge or a self unless proper ventilation is provided or it this is inconsistent with the set-to-box manufacturer requirements.
9. **Accessories** – To avoid any danger, do not use accessories other than those recommended by the manufacturer of this set-top box.
10. Do not expose the unit to dripping or splashing water or place objects filled with liquid, such as vases, on the unit.

Warning: Be safe when using electricity. The equipment or accessories supplied from the power line and connected to this device must be marked with the certification mark

on the accessory itself and must not be modified so as to block the safety functions. This minimises the potential risk of electric shock or fire. In case of any doubt, contact a qualified service technician.

11. **Accessories** – Do not place this set-top box on an unstable cart, stand, tripod, bracket or table. The set-top box could fall to the ground and cause serious injury to children or adults, or seriously damage itself. Use this set-top box only with the cart, stand, bracket or table recommended by the manufacturer or sold with the set-top box. Any installation of the device must be carried out in accordance with the manufacturer's instructions and the mounting accessories recommended by the manufacturer must be used.
- 11a. Be careful when moving the set-top box trolley. Quick stops, excessive force and uneven surfaces can cause damage to the set-top box.
12. **Outdoor aerial grounding** – If an outdoor aerial or cable system is connected to this set-top-box, it's necessary that this aerial or cable system should be earthed to provide a certain protection against voltage surges and static charge formation. Section 810 of the National Electrical Code, ANSI/NFPA No. 70-1984 (Section No. 54 of the Canadian Electrical Code, Part 1) provides instructions on proper grounding of the pole and the supporting framework, grounding the connecting lead to the aerial's discharge unit, connecting to the grounding electrodes and grounding electrode requirements.
13. **Power Lines** – The outdoor antenna system shall not be located near overhead power lines, other electric light or power circuits, or where it could fall on such power lines or circuits. When installing an outdoor antenna system, you must be extremely careful not to touch or approach such electrical lines or circuits, as this could be fatal. Installing an outdoor antenna can be dangerous, so leave it to the professionals who install antennas.

Usage

14. **Cleaning** – Unplug this set-top box from the power outlet before cleaning. Do not use liquid or spray cleaners. Use a damp cloth for cleaning.
15. Objects that can touch dangerous voltage points or "short out" parts can cause fire or electric shock. Avoid spilling any liquid on the set-top box.
16. **Lightning thunderstorms** – For increased protection of this set-top-box during a lightning thunderstorm or for longer periods when the device will not be used, disconnect the power cord from the power socket and disconnect the antenna or cable system. This will protect the set-top box from damage caused by lightning and power surges in the power grid.

Repairs

17. **Repairs** – Do not attempt to repair this set-top box yourself, as opening the cabinet or removing the covers could expose you to dangerous voltage or other hazards. Entrust all repairs to qualified service technicians.
18. **Damage requiring repair** – In the following situations, unplug the set-top box from the power outlet and have it repaired by qualified service technicians:

- A. If the power adapter or the connecting power cable is damaged.
- B. If liquid or foreign objects get into the set-top box.
- C. If the set-top box has been exposed to rain or water.
- D. If the image is not displayed correctly even though you follow the operating instructions. Only adjust the controls that are described in this manual. Improper adjustment of other controls can result in damage, and restoring the set-top box to normal operation often requires a significant amount of work by a qualified service technician.
- E. If the set-top box has fallen to the ground or its cabinet has been damaged.
- F. If the set-top box shows an obvious change in behaviour – this clearly indicates the need for repair.
19. **Replacement parts** – If replacement parts are required, ask the service technician to verify that the replacement parts used have the same safety characteristics as the original replacement parts. Using replacement parts specified by the set-top box manufacturer protects you from the risk of fire, electric shock or other hazards.
20. **Safety Check** – After completing any service or repair on this set-top box, ask your service technician to perform the manufacturer's recommended safety checks to verify safe operation of the set-top box.
21. **Wall or Ceiling Mounting** – This unit can only be wall or ceiling mounted in the manner recommended by the manufacturer.
22. **Heat** – This appliance must be located away from any heat sources such as radiators, air handlers, stoves or similar devices (including amplifiers) that produce heat.

Remote Control and Batteries

Do not expose the remote control or the batteries to direct sunlight or sources of heat, such as heaters, heat exchangers, stoves or other appliances (including amplifiers) producing heat. Do not use or leave the device in the vicinity of an open fire.

Ensure that the sensor is not exposed to a strong light source (e.g. sunlight) or light from fluorescent light tubes, which could reduce the effectiveness and reliability of the remote control.

Neither the remote control nor the batteries may be exposed to dripping or running water and objects filled with water must not be placed on them, e.g. vases. Protect from getting wet, splashing or spilling any liquid. Do not use outdoors. Failure to follow these instructions may result in damage to the remote control or batteries.

Do not use this device near water.

It is necessary pay attention to the environmental impact aspects of battery disposal.

The incorrect use of batteries may cause the leakage of the electrolyte and corrosion. Follow the instructions below to ensure that the remote control works properly:

- Do not insert the batteries in the wrong direction.
- Do not recharge, heat, open or short circuit the batteries.
- Do not throw the batteries into a fire.
- Do not leave discharged batteries in the remote control.
- Do not combine various types of batteries or new and old batteries.

- If you will not be using the remote control for a long period of time, remove the batteries to prevent potential damage caused by a subsequent battery leakage.
- If the remote control is not working correctly or its operational range is reduced, change all batteries for new ones.
- If electrolyte leaks out from the batteries, have the remote control cleaned at an authorised service centre.

Control in Normal Operation

Shortcut options from the remote control:

GREEN button – cyclic switching of resolution 576i, 576p, 720p, 1080i, 1080p.

YELLOW Button – cyclic switching of aspect ratio Auto, 16:9 Wide Screen, 16:9 Pillar Box, 16:9 Pan Scan, 4:3 Letter Box, 4:3 Pan Scan, 4:3 Full

BLUE button – enter timer overview

Remote Control



1. **STANDBY** (Standby mode)
(Turning the TV on or switching to standby)
2. **PLAY** (Playback)
3. **PAUSE** (Pause / Activate time shift function)
4. **TV/RADIO** (TV/radio)
(Switching between TV and radio modes)

5. **MEDIA** (Media)
(Open the Record menu)
6. **RED/GREEN/YELLOW/Blue button**
(For interactive functions / Nested menu function buttons)
7. **EPG** (Electronic Programme Guide)
(Open the Electronic Programme Guide menu)
8. **OK button**
(Confirm a menu selection)
9. **Cursor / CH+,-** (Previous/Next Channel)
/ VOL+,- (Volume Up/Down)
(Cursor: Navigation buttons to browse menu items)
(CH+/-: Previous/Next channel)
(VOL+/-: Volume up/down)
10. **Menu** (Menu)
(Open and close the menu screen)
11. **Search backward /forward**
(Search backwards/forwards)
12. **MUTE** (Turning the sound off/on)
13. **Numeric buttons**
(To enter numeric values and select a channel by direct number entering)
14. **TTX** (Teletext – opening interactive services)
15. **STANDBY** (Stand-by mode)
(Turning the STB on or switching to standby)
16. **RECORD** (Recording)
(TV programme recording)
17. **STOP** (Stop)
(Stop playback or programme recording)
18. **FAV** (Favourites)
(Open favourites list)
19. **AUDIO** (Audio)
(Select the sound mode and track)
20. **BACK** (Back)
(Switch to previous channel)
21. **EXIT** (Exit menu)
22. **INFO** (Information)
(Press to view information about the current channel)
23. **Previous/Next** (Previous/Next)
24. **SUBTITLE** (Turn subtitles on/off)

Programmable Button Learning Mode

1. To enter the learning mode, press the "SET" button in the TV CONTROL area for 3 seconds (until the LED lights up intensely).
2. Press the blue "POWER" button of the learning remote control (the LED will flash slowly).
3. Point the TV remote control directly at the learning remote control from a distance of 3–5 cm.
4. Press and hold down the "POWER" button on the TV remote control for approximately 3 seconds (the LED will flash rapidly) until the LED stops flashing (learning has been successful).
5. Repeat steps 2–4 to learn the other remote control commands (INPUT, VOL-, VOL+).
6. To exit the learning mode and save the learned codes, briefly press the "SET" button (LED will go off).

Get Started

The first time you use this STB, the "Installation Guide" menu will appear. Press the cursor buttons to set Language, Country.



Next, select Antenna Power (Antenna Power 5V), FTA (only non-paid stations). Press the "OK" button to save and start the channel search. Wait for full completion and saving to memory. Duplicate identical channels can be stored only once, depending on the specific parameters of the broadcaster.

Practical notes:

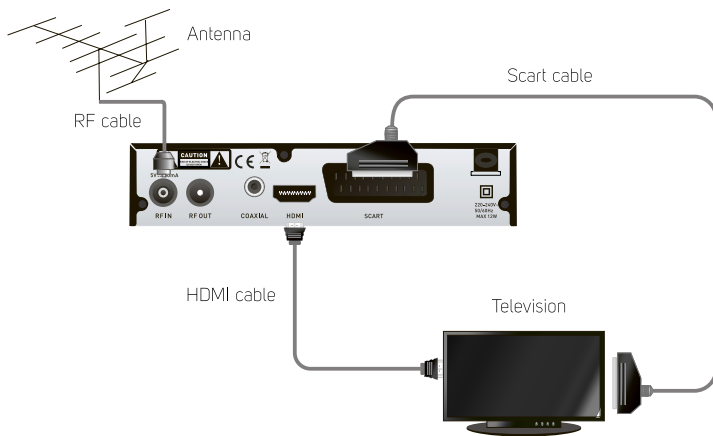
When you receive a tuned channel, you can check its reception quality by pressing the INFO button two times. Technical information about the multiplex being received, which carries multiple TV channels (5–15), is displayed. 3 indicators will also be displayed: Strength should be 60–100%, the other two parameters (BER and Quality) should be as full as possible, all the way to the right. Lower, and especially unstable, values can mean occasional or permanent reception failures, poor picture quality, etc. In this case, upgrade your antenna.

System Connection

General Information

There are many different types of TVs and other devices that can be connected to this STB. This guide lists the most common ways to connect your devices.

Connecting a TV



Note: Please connect the HDMI cable to the receiver ONLY when turned off (red Standby indicator lights)

Controls

Switching Channels

There are three ways to select a channel – by scrolling through the channel list, selecting by number and selecting from the on-screen channel list.

1. Scroll through the channel list:
To move through the channel list, press the up or down arrow button on the remote control.
2. Selection by number:
Enter the channel number directly by pressing the numeric buttons and press the "OK" button to select the desired channel.
3. Select from the list of channels on the screen:
You can also select the desired channel number by using the UP/DOWN arrow keys and confirming "OK" directly from the channel list on the screen. This list is displayed by pressing the "OK" button and, if necessary, the LEFT and RIGHT arrows to select a group of favourite channels. For more detailed information, see the "Channel Manager" section of this guide.

Electronic Programme Guide (EPG)

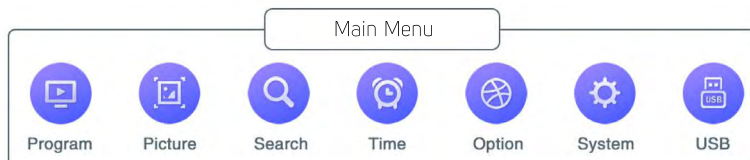
1. Press the "EPG" button to open the EPG (Electronic Programme Guide) menu.
 2. Press the cursor buttons to toggle between the channel list, the selected channel's event schedule.
 3. Press the "LEFT/RIGHT" button to switch between channel and programme windows.
 4. Only in the channel window: Press OK to view information about the current programme.
 5. Only in the programme window: Press the "RED" button to set the event timer to Record PVR or Reminder PLAY.
 6. Press the "GREEN" and "YELLOW" buttons to switch between days.
 7. Only in the programme window: Press "OK" to display selected event information.
 8. Press the "EXIT" button to return to the previous menu.
- Arrows – move between the programmes and shows.

Press the "BLUE" button to switch to Booking Management where you can manage previously created events or add new ones.



Main Menu

The main menu is used to set reception parameters, set advanced functions and manage channels. Press the MENU button to enter the menu. Use the LEFT and RIGHT keys to navigate through its categories, press OK to enter a category. Within a category, use the UP and DOWN keys to move between items. If the item has values to set marked with arrows before and after the current value, to toggle these values use the LEFT and RIGHT arrows on the remote control. Press OK to enter some items with multiple values (e.g. resolution, list of countries) or submenus.



Press the EXIT (or MENU) button to exit the current setting level and move to a higher level. If any settings need to be saved separately when leaving (e.g. setting a timer), the device prompts you to confirm. Confirm this save by pressing OK or cancel it by selecting Cancel.

Note on terminology:

“Programme” is a single, coherent part of a broadcast defined by its beginning, duration and end. In technical terminology it is called an “Event”.

“Channel” is a continuous series of programmes of a particular broadcaster, for TV it is called a TV Channel, for radio it is called a Radio Channel.

“RF channel” is a transmission characterised by a standardised number or carrier frequency in MHz (e.g. RF Channel 40 or 626 MHz) that contains multiple digital channels.

Channel Settings

Editing Channels

This option allows you to manage channel lists. In the submenu, select a mode using the number buttons 1–5, and its marking will light up in blue. Pressing the number button again will exit the mode and the blue mode marking will turn grey again. Use the UP/DOWN buttons to navigate the list. Press OK to select a channel to edit according to the selected mode. Inside the mode you can select all channels by pressing the RED button. For example, you can use this even if you want to unmark all previously marked channels in bulk, in which case you press the RED button twice. You can make edits in multiple modes, such as deleting and skipping. When you have made all the adjustments, press EXIT to confirm and save your changes. If you don't save the changes, they will be lost. Press the GREEN button to rename the channel.



List of Editing Modes:

- 1. Del (Delete)** – after switching on the mode, select the channel to delete with the OK button, a cross symbol will appear next to it. You can mark multiple channels.
- 2. Move** – after switching on the mode, select the channel to move with the OK button, a symbol will appear next to it. If you want to move multiple channels at once, mark them with the GREEN button. Then use the UP/DOWN arrow keys to move them to a new position in the list and press OK again to place them under the selected position.
- 3. Skip** – after switching on the mode, select the channel to skip with the OK button, a symbol will appear next to it. This channel will not be visible in the normal list, but will not be deleted. You can later cancel the skip again. The channel number series in the current list will not be broken, the numbering will be shifted.
- 4. Lock** – after switching on the mode and entering your password, select the channel to lock with the OK button, a lock symbol will appear next to it. The channel marked in this way will be protected by your password in normal mode, you will need to enter it to watch it.

5. Fav (Favourites) – after switching on the mode, select the channel to be added to one (or more) favourites list by pressing OK. When pressed, a list of favourite channel groups will appear (e.g. Movies, News, Sports, etc.). You can also indicate your inclusion in more than one group. When you exit the EXIT group list, a heart symbol will appear next to it.

Note: in normal operation, you can navigate between channel groups using the LEFT/RIGHT arrow keys. Appropriate compilation of favourite groups can greatly simplify the use of the receiver when receiving many channels, extensive lists.

EPG Programme Guide

The option has the same function as the EPG button on the remote control, described above.

Sort Channels

Extensive channel lists can be forced to sort by some property: LCN, Frequency, Service ID, Service Name. It always depends on the information obtained from the digital broadcast.

LCN

Logical channel numbering is a system of fixed channel number assignment according to the operator's choice. It is mainly used in cable television. In terrestrial broadcasting only in some states. If the option is enabled and there is no information in the broadcast, channels 800 and above are numbered.

Channel Updates

Enable or disable channel updates based on broadcast information. Such updates are performed by the operator, only occasionally.

Volume Adjustment

You can set either Bulk Adjustment (common volume for all channels, recommended) or Adjust by Channel (only if there are significant volume differences between channels).

Picture Setting



Aspect ratio

Set to Auto if you have a widescreen TV and it receives all commands from the HDMI interface. If not, set a suitable 16:9 image processing method

Resolution

Set the correct resolution according to your TV's characteristics. Proceed from lower values to the highest possible. Then confirm the new choice, otherwise the resolution will be reverted. This prevents image loss by overly high resolution.

TV Format

Choose between NTSC and PAL according to the system in your area.

TV Scart

Select a colour system (for SCART output only), CVBS is more compatible, RGB is more accurate but more demanding.

Panel Settings

Use the menu to adjust the panel brightness, channel number or time display, and time display during Standby.

Search



Search Mode

Choose between terrestrial DVB-T2 and cable DVB-C.

All or Free – FTA only

Select, if you want to tune all channels or only free, non-paid (FTA).

Automatic Search

Before starting, you will be asked to clear all previously tuned channels and automatically retune the entire band according to the parameters specified above.

Manual Search

DVB-C: to manually find a specific channel, search for its parameters according to your operator's data. Enter the Frequency, Symbol Rate and QAM Modulation, if applicable. Specify whether to search for other associated operator channels on this frequency according to the NIT table. Then press Start.

For DVB-C there is also an option to search a larger range of frequencies by selecting Search All.

DVB-T2: according to the information about terrestrial channels in your area, set the best radio channel number, its frequency and bandwidth will be assigned automatically according to the standard. Then press Start.

Country

Select the correct country where you are receiving in order to choose the correct frequency plan and other parameters.

Antenna Power Supply: 5V

If you have an active antenna equipped with an amplifier with a 5 volt power supply over the antenna cable, turn this option to ON. Otherwise, leave it on OFF.

Setting the Clock



Region and Time

Select the method of entering the time, either Manual, where you also select Region and Time Zone. Or select DVB, where the exact time will be loaded automatically from the broadcast (recommended). The automatic time depends on the accuracy of the broadcast and its operators. With DVB time, the current time cannot be entered manually. **Summer time:** Choose according to your current circumstances. Some operators also supply the correct information to the broadcast.

Sleep

Select after how many hours the receiver should be switched off when the user is idle. Alternatively, you can disable this function completely by selecting OFF.

Timer Setting

Press the GREEN button to set a timer to switch to a specific channel at a specific time by selecting Play. Or you can select PVR to record a specific channel for a set period of time. Once you have set valid values, press the EXIT button and confirm the saving of the set values by selecting OK. You can remove the set timers one by one with the RED button or edit them with the YELLOW button. To clear all timers, press the BLUE button.

The total number of timers is 8.



Automatic On and Off

You can leave full manual control by selecting Disabled or enable a function by entering a specific time. The function depends on the correct entry of the time and, if necessary, updating the time from the broadcast.

Options



OSD Language

Select the receiver menu language from the available languages.

EPG Language

We recommend leaving it on All, where the language definition is loaded from the broadcast. If it does not give good results, select the language manually, from those available.

Subtitle Language

Set to a specific language to search for a match with the broadcast subtitles – depends on the specific broadcast. Or suppress the subtitle display by selecting OFF.

Teletext Language

Leave it to Auto to search for a match with the broadcast teletext – depends on the specific broadcast. If it does not give good results, select the language manually, from those available.

The First Language of Sound

A match is searched for with the broadcast language, if found, the audio is selected when watching that channel.

The Second Language of Sound

If no match with the first sound is found in the broadcast, the second sound is searched for.

Digital Audio

The digital audio output is output in linear PCM format (most compatible) or original from the broadcast (Bypass) or according to the broadcast information (Auto).

Sound Memorisation

Saves the soundtrack determination. It depends on the broadcast and identification of the soundtrack.

Audio Description

If an audio description (usually marked AD for a particular programme) is broadcast, it can be switched on by selecting ON. The ratio of the original sound to the audio description (AD Volume Offset) can then be adjusted.

Turn Off after Recording

Select ON if you do not want to leave the receiver on after recording is complete.

HDMI CEC

HDMI CEC is a system of mutual control of different devices connected by HDMI cable. If you have another device equipped with HDMI CEC, test which functions will work together (on, off, volume, channel selection, etc.) with the remote control from the other device. Faultless cooperation between different devices is not guaranteed.

System



Parental Control

Enter the original password "000000" and set the age 4–18 to be searched for programmes during the broadcast. If a higher age is broadcast, the receiver will prevent reception of that programme until the password is entered.

Lock Settings

You can set Menu Lock, Channel Lock or change the factory password "000000" to a custom password. If you forget your own password, you can use the super password "876543" to set a new password

Factory Settings

If you need to clear all your settings and reset the receiver to factory settings, use this option. You will need to enter a password to do this.

System Information

Displays information about the receiver's hardware and software.

Software Upgrade

If you receive an approved software upgrade from the manufacturer, you can install it using this option. Select the type and location according to the instructions issued for this update and start the installation by selecting Start. **DO NOT SWITCH OFF THE DEVICE!** Ensure uninterrupted power during the upgrade. After the upgrade, you will need to reinstall the device.

Starting Mode

Select the status after the device is connected to power, e.g. after a power failure between On, Standby or Last status.

USB

Connecting a Mass Storage Device to the USB port will enable the Time Shift/Record feature for a broadcast program.

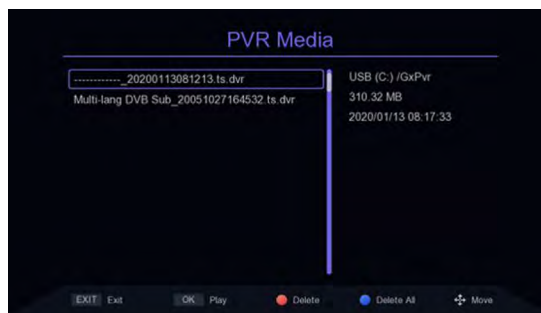
Note: For recording or the time-shift feature, use a USB 2.0 disc. For the time-shift and recording feature, please use a USB disc with a higher capacity (> 2 GB). To power the HDD, please use a separate power supply. The disk must be fast enough without failures, the required speed is determined by the transmission speed of the specific channel. If the speed is insufficient, the recording will be disturbed or unusable. Flash memories are less suitable than HDDs due to limited long-term reliability.

Multimedia

This option opens the playback option if you connect a compatible USB stick with your files. Next, select simple view FILE, VIDEO, MUSIC or IMAGE. You can then view the specified file type by opening the USB drive (C:). The playback is then controlled using the remote control keys: OK, PLAY, PAUSE, STOP.

PVR Records

If you have already recorded broadcasts to your USB drive, this option will display a list of them. Press OK to start playback of the selected recording. You can delete a particular recording with the RED button, or you can delete all with the BLUE button.



Note: The record list can be accessed in normal operation by pressing the MEDIA button.

PVR Settings

Time Shift:

Select On to enable time shift when watching a programme, after pressing the PAUSE button. If time shift is not enabled, pressing PAUSE will only pause the picture.

Length of Recording:

Set a preset recording duration after pressing the REC button, e.g. 2 hours.

PVR Transcription:

Turn on or off time-shift overwriting when there is insufficient space in the USB memory.

Storage Info:

Displays the total and free space in the USB memory. If there are multiple partitions on the disk, you can use the GREEN button to specify which one will be used for PVR. You can format the partition with the RED button.

ATTENTION! Formatting irreversibly deletes all the contents of the disk!



Time Shift / Recording

Time Shift

The Time Shift function can be activated in broadcast monitoring mode by pressing the "PAUSE" button if this function is enabled in the MENU/USB/PVR settings. When the function is started, an information window is briefly displayed.

During the time shift, you can control the watching with the PLAY (starts playback where you paused it) and PAUSE (pauses playback – the broadcast is still recording in the background) buttons. Press the FORWARD/BACKWARD buttons to fast-forward through the current recording. Or you can search for a specific location on the timeline by pressing INFO "i". Use the LEFT/RIGHT arrow keys to scroll on the timeline and press OK to start the found location.

To stop the Time Shift function, press the "STOP" button and confirm the end with OK.

Record

Instant recording during normal viewing of the broadcast by pressing the "RECORD" button. The preset recording length is determined by the setting in the PVR menu. To end the recording, press STOP and confirm with OK.

You can set the **general timer recording** in MENU/Time/Timer settings. In the timer settings, select PVR. Set the necessary values, press the EXIT button and confirm the saving of the set values by selecting OK. You can remove the set timers one by one with the RED button or edit them with the YELLOW button. To clear all timers, press the BLUE button.

Recording by EPG is the easiest timer to enter, as the receiver fills in the necessary data according to the information from the digital programme information stream displayed by the EPG system. With the EPG displayed, search for the desired channel in the left window and for the desired programme in the right window. Press the RED Reservation button, check the details you entered and press EXIT. Confirm the saving of these values by pressing OK. A red circle will appear next to the selected programme.

Note: If you did not select PVR when you entered the mode, but only Play, a green circle will appear next to the programme.

Multimedia Player

Multimedia Player Main Menu

Make sure that external data storage device is connected to the USB port.

1. Press the "MENU" button to open the main menu.
2. Press the "LEFT" or "RIGHT" button to highlight USB and press OK to select ""Multimedia".
3. Press the "UP" or "DOWN" button to select simple view Files, Video, Music or Images. You can then display the specified type by pressing OK and opening the USB drive (C:). The playback is then controlled using the remote control keys: OK, PLAY, PAUSE, STOP.
4. Press the "EXIT" or "MENU" button to exit.

Media Playback

This feature allows you to play media files from a device connected to the USB port. During playback, press OK to display the information and control window. It contains basic information about the file being played and a menu of controls (scroll, pause, settings, information) depending on the type of file being played.

Press "DOWN" to move to the available functions when the window is displayed, and then press "LEFT" and ""RIGHT" to switch between functions.

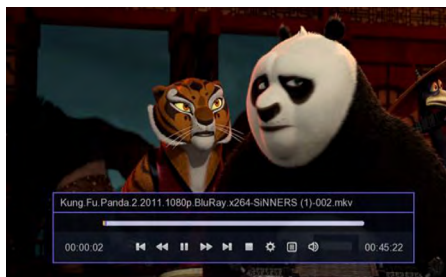
Files:

This option displays all files on the disk. After pressing OK, the media files will be played, while the others will display an error message. You can play files similar to the other options VIDEO, MUSIC, PICTURES, only they are visible all at once.

This option combines photo viewing with background music. Start music from the MP3 music folder first, then start viewing JPG photos from the pictures folder on the same drive. Music playback continues until you exit the selected USB drive (C:) or stop it.

Video:

Useful features include Settings (the gear symbol) which will offer to skip to a specific playback time, select a soundtrack from those available, set a repeat or switch the aspect ratio of the display if available. You can also view information about the file.



Note: When you stop playing a file, e.g. a movie, and restart it, the player will offer you the option to resume where you left off. You can confirm this by pressing OK or cancel and play from the beginning.

Audio:

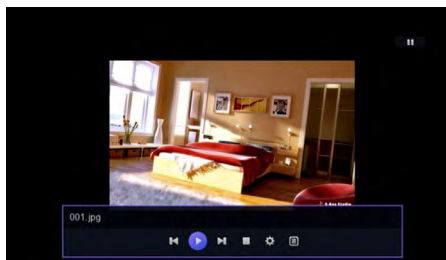
Useful features include Settings (the gear symbol), which will offer to set the repetition and the way text is displayed and coded if available. You can also view information about the file.



Note: Music playback continues until you exit the selected USB drive (C:) or stop it. You can continue to select other music on the disc with background music, which will start when you press OK on the music file.

Picture:

Useful features include Settings (the gear symbol), which offers to set the repetition and duration of a single image display. You can also view information about the file.



INSTRUCTIONS AND INFORMATION ON DISPOSAL OF USED PACKAGING MATERIAL

Dispose of used packaging material in the designated waste disposal area determined by the municipality.



DISPOSING OF USED ELECTRICAL AND ELECTRONIC EQUIPMENT

This symbol on products or original documents means that used electric or electronic products must not be added to ordinary municipal waste. For proper disposal and recycling of these products, deliver them to designated collection points. Alternatively, in some European Union states or other European countries the products can be returned to the local retailer when buying an equivalent new product. By properly disposing of this product, you help preserve valuable natural resources and contribute to preventing potential negative impacts on the environment and human health resulting from improper waste disposal. For further details, contact your local authorities or the nearest collection point. Fines may be imposed for improper disposal of this type of waste in accordance with national regulations.

For Business Entities in European Union States

If you want to dispose of electric or electronic devices, ask your retailer or supplier for the necessary information.

Disposal in Other Countries Outside the European Union

This symbol is valid in the European Union. If you wish to dispose of this product, request the necessary information about the correct disposal method from the local council or from your retailer.



FAST ČR, a.s. hereby declares that the radio device type SDB 5007T conforms to the 2014/53/EU directive.

For full version of the EU declaration of conformity, please refer to www.sencor.com website

The text, design and technical specifications may be changed without prior notice and we reserve the right to make these changes.

SENCOR®

EN Warranty conditions

Warranty card is not a part of the device packaging.

This product is warranted for the period of 24 months from the date of purchase to the end-user. Warranty is limited to the following conditions. Warranty is referred only to the customer goods using for common domestic use. The claim for service can be applied either at dealer's shop where the product was bought, or at below mentioned authorized service shops. The end-user is obligated to set up a claim immediately when the defects appeared but only till the end of warranty period. The end user is obligated to cooperate to certify the claiming defects. Only completed and clean (according to hygienic standards) product will be accepted. In case of eligible warranty claim the warranty period will be prolonged by the period from the date of claim application till the date of taking over the product by end-user, or the date the end-user is obligated to take it over. To obtain the service under this warranty, end-user is obligated to certify his claim with duly completed following documents: receipt, certificate of warranty, certificate of installation.

This warranty is void especially if apply as follows:

- Defects which were put on sale.
- Wear-out or damage caused by common use.
- The product was damaged by unprofessional or wrong installation, used in contrary to the applicable instruction manual, used in contrary to legal enactment and common process of use or used for another purpose which has been designed for.
- The product was damaged by uncared-for or insufficient maintenance.
- The product was damaged by dirt, accident of force majeure (natural disaster, fire, and flood).
- Defects on functionality caused by low duality of signal, electromagnetic field interference etc.
- The product was mechanically damaged (e.g. broken button, fall).
- Damage caused by use of unsuitable media, fillings, expendable supplies (batteries) or by unsuitable working conditions (e.g. high temperatures, high humidity, quakes).
- Repair, modification or other failure action to the product by unauthorized person.
- End-user did not prove enough his right to claim (time and place of purchase).
- Data on presented documents differs from data on products.
- Cases when the claiming product cannot be indentified according to the presented documents (e.g. the serial number or the warranty seal has been damaged).

Manufacturer:

FAST ČR, a.s., U Sanitasu 1621, Říčany 251 01, Czech Republic

Visit www.sencor.com for detailed information about authorized service centers.

The original version of the instructions is in the Czech language, other language versions are made by the appropriate translation.

