

Food chopper

Instruction manual

EN



SENCOR®

SHB 4320

CAUTION

Please read the use instructions carefully and completely before using the appliance.

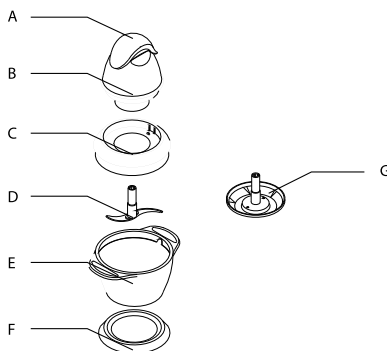
- This appliance is not intended for use by persons (including children) with reduced physical, sensory or mental capabilities, or lack of experience and knowledge, unless they have been given supervision or instruction concerning use of the appliance by a person responsible for their safety. Children should be supervised to ensure that they will not play with the appliance.
- The blades are very sharp! Handle with care.
- Before you plug the appliance into a socket, check whether the voltage in your home corresponds to the rating label of the appliance.
- Always unplug the appliance before assembling, disassembling, cleaning or storing.
- Do not let the power unit, cord or plug get wet.
- Never use a damaged appliance, if it has been damaged, please get it to approved service centre checked or repaired.
- Do not let excess cord hang over the edge of a table or worktop or touch hot surfaces.
- Remove the knife blade before emptying the bowl.
- Do not plug the appliance into the power supply until it is fully assembled and always unplug before disassembling the appliance or handling the knife blade.
- The appliance is constructed to process normal household quantities.
- If the supply cord is damaged, it must be replaced by the manufacturer or its service agent or a similarly qualified person in order to avoid a hazard.
- Switch off the appliance before changing accessories or approaching parts which move in use.

Important

- Do not run the food chopper continuously for longer than 30 seconds, leave it to cool for 2 minutes in between each 30 seconds operation.
- Never operate the food chopper with the bowl filled with liquid.
- Do not use small "S" blade chop hard foods, such as coffee beans, ice cubes, nutmeg, spices or chocolate.

Description:

- A. Switch cover
- B. Housing
- C. Cover
- D. Small blade
- E. Chopping bowl
- F. Skid proof mat
- G. Blending pole



How to use the food chopper

Chopping

- Carefully remove the plastic cover from the blade.
- Caution: The blade is very sharp! Always hold it by the upper plastic.
- Place the blade in the centre pin of the chopping bowl.
- Add your food. See processing guide.
- Put the cover on the chopping bowl.
- Inset the motor part into the cover.
- Plug in. Press down on the switch cover for short lengths of time to produce a pulsing action—this will avoid over processing the ingredients.
- After use, unplug, then remove the motor part and the cover.
- Carefully take out the blade.
- Remove the processed food from the chopping bowl.

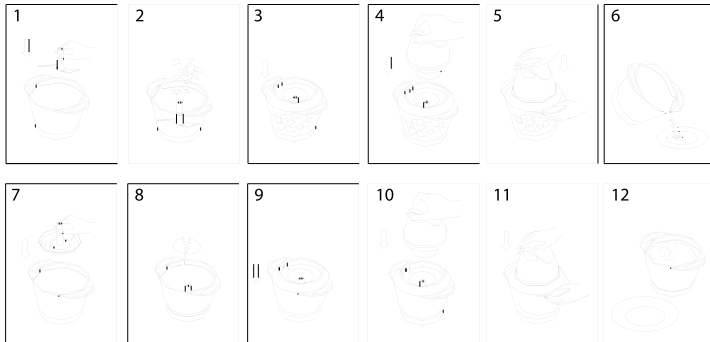
Food chopper

SHB 4320

NE

Egg processing

- Put the egg white into the chopping bowl.
- Place the blend pole onto the centre pin of the chopping bowl.
- Put the cover on the chopping bowl.
- Insert the motor part into the cover.
- Plug in, press down on the switch cover for 20 seconds.



Cleaning

- Always switch off and unplug before cleaning.
- Clean the motor part with a damp cloth only. Do not immerse it in water.
- All other parts can be cleaned in the dishwasher.
- When processing foods with color, the plastic parts of the appliance may become discolored, wipe these parts with vegetable oil before placing them in the dishwasher.
- Handle the cutting blades with care they are extremely sharp.

Processing guide

Food	Maximum	Operation time	Preparation
meat	200g	15sec	2,5cm
herbs	50g	6sec	
nuts, almonds	150g	15sec	
cheese	100g	10sec	2,5cm
bread	75g	20sec	2,5cm
onions	150g	10sec	half or quarter
biscuits	150g	20sec	2,5cm
soft fruit	200g	10sec	2,5cm
egg whites	4 egg whites	20sec	

Technical features:

230V ~ 50Hz, 350W
Bowl capacity: 750ml

INSTRUCTIONS AND INFORMATION REGARDING THE DISPOSAL OF USED PACKAGING MATERIALS

Dispose of packaging material at a public waste disposal site.

DISPOSAL OF USED ELECTRICAL AND ELECTRONIC APPLIANCES

The meaning of the symbol on the product, its accessory or packaging indicates that this product shall not be treated as household waste. Please, dispose of this product at your applicable collection point for the recycling of electrical & electronic equipment waste. Alternatively in some states of the European Union or other European states you may return your products to your local retailer when buying an equivalent new product. The correct disposal of this product will help save valuable natural resources and help in preventing the potential negative impact on the environment and human health, which could be caused as a result of improper liquidation of waste. Please ask your local authorities or the nearest waste collection centre for further details. The improper disposal of this type of waste may fall subject to national regulations for fines.

For business entities in the European Union

If you wish to dispose of an electrical or electronic device, request the necessary information from your seller or supplier.

Disposal in other countries outside the European Union

If you wish to dispose of this product, request the necessary information about the correct disposal method from local government departments or from your seller.



This product meets all the basic EU regulation requirements that relate to it.

Changes to the text, design and technical specifications may occur without prior notice and we reserve the right to make these changes.