

Hand Blender

Instruction Manual

EN




SENCOR®

SHB 4352

Before first use, please read user's manual carefully, even if you already have an experience with using similar equipment. Use blender only in accordance with the instructions included in this manual. Save manual for future reference.

Save the cardboard box, packaging material, cushioning, prove of purchase receipt and the warranty policy at least for the duration of the warranty period. In case you need to ship the appliance back, use the original packaging.

Important safety instructions

- This appliance is not intended for use by persons (including children) with reduced physical, sensory or mental capabilities, or lack of experience and knowledge, unless they have been given supervision or instruction concerning use of the appliance by a person responsible for their safety.
- Children should be supervised to ensure that they will not play with the appliance.
- Before connecting the power cord to the wall outlet, make sure that the voltage is compatible with the voltage shown on the label on the blender.
- Never use the blender close to water, bathroom, swimming pool or showering room. 
- Never use accessories that are not originally supplied with your product or accessories that are not designed to be used with your product.
- Do not place the blender on window ledge.
- Make sure that the power cord or the power cord plug are not in contact with water or are wet before connecting it to the wall outlet.
- Place the blender on even and flat surface.
- Do not pour water or any other liquids into the appliance.
- Always disconnect the appliance from the supply if it is left unattended and before assembling, disassembling or cleaning.
- Your blender has been designed for household use only. It is able to handle regular amounts of food.
- Do not use the blender for commercial purposes or outdoors!
- Do not use any spray bottles around the blender.
- Do not allow children to use the blender without supervision.
- If you are not using the blender, always disconnect the power cord from the wall outlet. Store away from children.
- Do not place the blender on hot surfaces such as electric or gas oven. Also do not place it close to heat producing equipment or close to an open fire.
- Do not use damaged blender or if it is not working properly. Do not use if the power cord or the power cord plug are damaged.
- If you discover damaged power cord or power cord plug, have it repaired by authorized service centre only.
- Never attempt to repair the appliance yourself. There is a risk of electrical shock. Have all repairs and adjustments done by an authorized service centre or repair shop. Any attempt to perform repair or adjustment during the warranty period will void the warranty.
- Do not place the power cord close to or on hot surfaces. Do not place on sharp objects. Do not place heavy objects on the power cord. Place the power cord in such way, so no one will step on it or trip over it. Make sure that the power cord is not hanging down from a table. Make sure it is not touching hot surfaces.
- When disconnecting the power cord from the wall outlet, do not pull it by the cord. You may damage the cable or the wall outlet. Instead, hold the power cord plug and pull it out of the wall outlet.
- Use the blender only for purposes for which it has been designed.
- Make sure that the appliance is switched off and unplugged before attaching the removable part to the motor unit or its removing.
- Do not switch on the appliance unless the removable part is properly attached to the motor unit. Do not switch on the appliance idly. Improper use could adversely affect the life of the appliance.
- Do not place your hands inside the mixing container while the device is operating.
- Do not place inside the mixing container items that you do not wish to be mixed.
- Use extreme caution when blending hot foods or hot items. Use only small portions. Hot mix may spill out and cause severe burns. If the items to be blended are very hot, allow them to cool down to a temperature at least 60 °C.
- Never use the blender for mixing or blending foods that are being cooked on an electric or gas stove.
- The operation time is 1 min. After one minute of use, let it rest for at least two minutes. If you are using the blender for mixing heavy or hard food items, we recommend taking a break every 20 – 30 seconds.
- **Caution!** The cutting knives are very sharp. Never attempt to touch the spinning knives.

How to use your blender

Press the button to attach/release the lower removable part and attach the lower part to the motor unit.
Note. If you would like to release the lower removable part, press the button and remove the part.

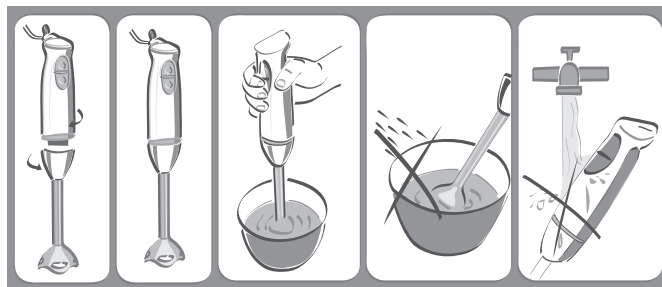
Prior to initial use, it is necessary to thoroughly wash the device and mixing dish with hot water, using washing-up liquid, followed by rinsing it with drinking water.

Hand Blender

SHB 4352

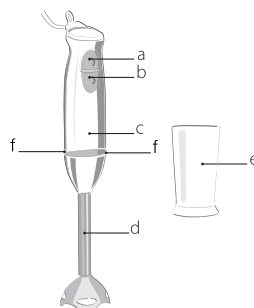
EN

During washing and cleaning, you may submerge in water only the removable part (D). Do not submerge in water or any other liquid the motor unit of the blender.



Part description

- a - Switch (speed I)
- b - Switch (speed II)
- c - Motor unit
- d - Detachable stainless steel blending shaft
- e - Mixing container
- f - Buttons (on both sides of the device) for attaching/ releasing the lower removable part.



This hand blender is suitable for the following operations:

- Mixing of cooked ingredients – e.g. preparation of mixed baby formulas
- Mixed drinks – e.g. preparation of milk cocktails, fruit drinks, sauces etc.
- Mixing of soft ingredients – e.g. preparation of bread spreading, mayonnaise etc.

Ingredients processing guide

Ingredients	Volume in g	Speed	Mixing time
Mixed baby formulas, sauces	100 - 300	1	45 s
Mixed drinks	100 - 500	2	30 s
Fruits and vegetables	100 – 200	1	45 s
Cheese	50 – 100	1	30 s

The shown mixing times are for you reference only. The actual mixing time depends on how fine mix you want to achieve.

Cleaning

Before cleaning, always disconnect the power cord from the wall outlet.

Clean the he blender cover (the motor unit) with soft and wet cloth. Never submerge this part in water or any other liquid.

Other parts, such as the mixing container and the removable lower part with the cutting knives may be washed in a regular dishwasher.

You may also clean the knives by submerging them in hot water with soap and by switching the blender on. In this case, you must have the blender connected to the wall outlet.

Do not use abrasive or aggressive cleaning products, such as paint thinners or benzene.

Technical parameters:

Voltage 230 V~50 Hz, 400 W

Electrical safety class: II (double insulation)

Noise level: 58dB(A)

The declared noise emission level for this appliance is 58 dB(A), which represents level A of the acoustic power relative to the reference acoustic power of 1 pW.

Instructions and information about the proper disposal of used packaging materials

Dispose of used packaging material properly in accordance with local rules.

Disposal of used electrical devices



This symbol on your product and its accessories indicates that this product may not be treated as a regular household waste. Instead, take the used product to the appropriate waste collection centre that is equipped to handle electrical waste. There are many independent electrical waste collection sites in the member countries of the European Union. By abiding by these regulations you help to protect the environment and lower the risk of health hazards that may occur due to improper waste management. Recycling greatly reduces the exploitation of natural resources. Therefore, dispose of waste properly and do not throw your old electrical appliances into the regular household waste. To find out more information about the proper waste management and recycling policies, valid in your location, please contact the environment protection authorities in your area or the retailer where you bought your electrical appliance.



This product is in compliance with the requirements of the regulations of EU on electromagnetic compatibility and electrical safety.