

Pedestal Fan

User's manual

EN



SENCOR®

SFN 4044WH

Prior to using this appliance, please read the user's manual thoroughly, even in cases, when one has already familiarised themselves with previous use of similar types of products. Use the appliance only as described in this manual. Keep this manual for later use.

We recommend saving the original shipping cardboard box, packaging material, receipt and warranty card for the duration of warranty. In the event of shipping, pack the appliance using the original packaging materials only.

EN-1

CONTENTS

IMPORTANT SAFETY INSTRUCTIONS.....	3
DESCRIPTION OF THE FAN	5
ASSEMBLING THE FAN	6
OPERATING THE FAN	6
CLEANING AND MAINTENANCE	7
TECHNICAL SPECIFICATIONS	7
INSTRUCTIONS AND INFORMATION REGARDING THE DISPOSAL OF USED PACKAGING MATERIALS ...	8
DISPOSAL OF USED ELECTRICAL AND ELECTRONIC APPLIANCES	8

IMPORTANT SAFETY INSTRUCTIONS

- This appliance may be used by children 8 years of age and older and by persons with physical or mental impairments or by inexperienced persons if they are properly supervised or have been informed about how to use of the product in a safe manner and understand the potential dangers. Do not allow children to play with the appliance.
- Cleaning and maintenance performed by the user must not be performed by unsupervised children.

IMPORTANT SAFETY INSTRUCTIONS**READ CAREFULLY AND STORE THESE INSTRUCTIONS FOR FUTURE USE.**

- Before connecting the appliance to a power socket, check that the technical details on the rating label of the appliance match the electrical voltage in the socket.
- To prevent the appliance from overheating, do not cover it with any items.
- The appliance is designed for use in households, offices and similar types of areas.
- Do not use the appliance in very dusty or humid rooms such as laundries or bathrooms, in areas where chemicals are stored, in industrial surroundings or outdoors!
- Do not place the appliance in the vicinity of an open flame or appliances that are sources of heat.
- Always place the appliance on an even, dry and stable surface. Do not place the appliance on unstable surfaces such as carpets with very long and thick fibres.
- Do not submerge the appliance in water or in any other liquid.
- Do not insert any items through the protective grill. An electrical short circuit could occur, a fire might start or the appliance may be damaged.
- Always turn off the appliance and disconnect it from the power socket if you will not be using it and before moving, cleaning, disassembling or assembling it.
- Do not disconnect the appliance from the power socket by pulling on the power cord. This could damage the power cord or the socket. Disconnect the cord from the power socket by gently pulling the plug of the power cord.
- Make sure that the power cord is not tripped over or that it is not touching a hot surface.
- It is forbidden to use the appliance if it has a damaged power cord or plug. If the power cord is damaged, have it replaced at a professional service centre.
- Do not use the appliance if it is not working correctly, if it has been damaged or has been submerged in water. To avoid the danger of injury by electrical shock, do not repair the appliance yourself or make any adjustments to it. Have all repairs or adjustments of the appliance performed at an authorised service centre. Tampering with the appliance during the warranty period may void the warranty policy.

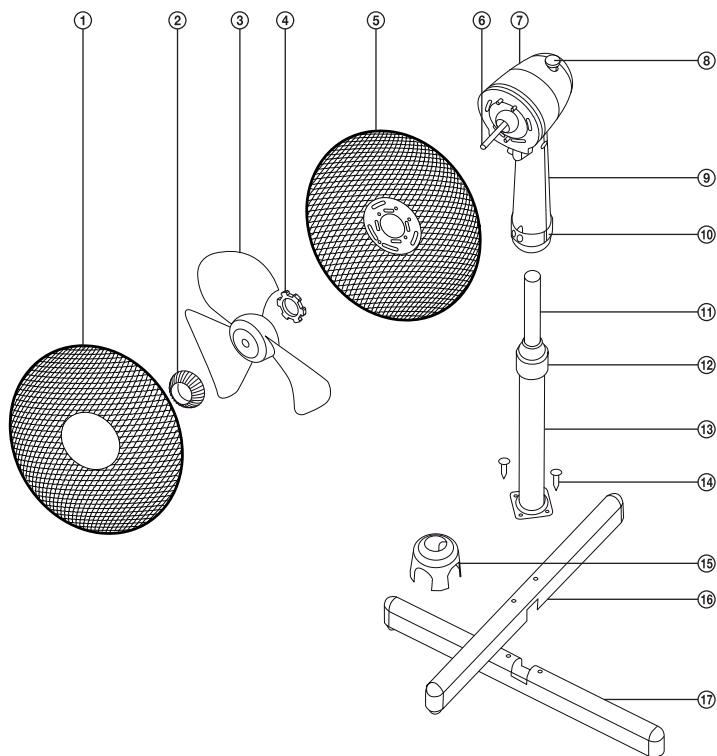
Pedestal Fan

SFN 4044WH

EN

DESCRIPTION OF THE FAN

A



- ① Front protective grill
- ② Fan blade fastening nut
- ③ Fan blades
- ④ Nut for fastening the rear protective grill
- ⑤ Rear protective grill
- ⑥ Motor shaft
- ⑦ Motor unit
- ⑧ Switch for activating and deactivating oscillation
- ⑨ Motor unit holder
- ⑩ Power off and fan speed selection dial
(0 – off, 1 – low speed, 2 – medium speed, 3 – high speed)
- ⑪ Inner telescopic pole
- ⑫ Inner telescopic pole lock
- ⑬ Outer pole
- ⑭ Screw (4 pcs included)
- ⑮ Cross base connection cover
- ⑯ Part A of the cross base
- ⑰ Part B of the cross base

Pedestal Fan

SFN 4044WH

ASSEMBLING THE FAN

- Take the fan out of the packaging material and check that you have all the parts illustrated in the chapter Description of the fan. Apart from the above mentioned the appliance also comes with a screw and nut for securing the outer band of the front and rear grill A① and A⑤.
- Take the screws A⑭ out of the cross base parts A A⑯ and B A⑰. There are cut-outs in the middle of parts A A⑯ and B A⑰. Cross the parts A A⑯ and B A⑰ so that the cut-outs slide into each other. Place the cross base on an even, dry and stable surface.
- Place the pole A⑬ perpendicular to the cross base while ensuring that the screw holes for the base of the pole A⑬ are aligned with the cross base. Use screws A⑭ (4 pcs) to screw the base of the pole A⑬ on to the cross base.
- Release the lock nut A⑫ and remove it from the inner pole A⑪. Slide the cover A⑮ on to the inner pole A⑪ and lower it down to the cross base so that the connections of the base of the pole A⑬ and the cross base are covered.
- Place the lock nut A⑫ back on to the inner pole A⑪. Slide out the inner pole A⑪ and set it to the required length. Hold the pole A⑪ in place and secure it in place using the lock nut A⑫.
- A fastening screw is located on the motor unit holder A⑨. Loosen the screw and place the motor unit holder A⑨ on to the inner pole A⑪. Tighten the screw to secure the holder A⑨ to the pole A⑪. The connection of the holder A⑨ and the pole A⑪ must be tight so that the motor unit A⑦ does not fall on to the floor.
- Unscrew the nut A② (if it is attached) and A④ from the motor shaft A⑥. Seat the rear protective grill A⑤ on to the motor shaft A⑥ in such a way that the fan carrying handle attached to the rear grill A⑤ points upwards. Push the rear grill A⑤ towards the motor unit A⑦ ensuring the lugs on the front part of the motor unit A⑦ pass through the holes in the central part of the rear grill A⑤. Use the nut A④ to secure the grill A⑤ to the motor unit A⑦.
- On to the motor shaft A⑥ place the fan blades A③ and push them fully in the direction of the motor unit A⑦. Make sure that the motor shaft A⑥ slides correctly into the hole in the centre part of the fan blades A③. Connect the fan blades A③ to the shaft using the fastening nut A②.
- On the outer band of the protective grill A① there are three fastening clamps, a hook and a screw hole. Release the clamps and hold the grill A① in such a way that the hook is located on the top part of the grill A①. Place the front grill A① against the back grill A⑤ in such a way that the outer band of the grill A⑤ fits into the hooks on the outer band of grill A①. Check that the outer bands and the screw holes are aligned. Fold down the clamps to fasten the outer bands together. For safety reasons secure the outer band connection using the supplied screw and nut. If during the assembly of the fan you proceeded according to the above instructions, the screw holes are located in the bottom part of the outer band.
- The fan is now assembled and ready for use.

OPERATING THE FAN

- Connect the fan to a power socket.
- 1) **Setting the height of the fan**
Use one hand to firmly hold the telescopic pole A⑪ and release the lock A⑫ with the other. Move the telescopic pole A⑪ up or down to set the desired height of the fan. Once you have set the height of the fan, tighten the lock nut A⑫. This will secure the telescopic pole A⑪ in the set position.
 - 2) **Setting the speed and turning off the fan**
Turn the dial A⑩ to position 1 to set the fan to low speed. Turn the dial A⑩ to position 2 or 3 to set the fan to medium or high speed. Turn the dial A⑩ to position 0 to turn off the fan.

Pedestal Fan

SFN 4044WH

NE

3) Activating and deactivating oscillation

If the fan is running, push switch A⑧ downwards to activate the oscillation of the motor unit A⑦. The motor unit A⑦ will oscillate horizontally. To deactivate the oscillation pull switch A⑧ upwards.

4) Setting the vertical tilt of the motor unit

Before setting the vertical tilt of the motor unit A⑦, first turn off the fan by turning the dial A⑩ to position 0 (off). Set the desired vertical tilt angle of the motor unit A⑦ and then turn the fan on again.



Note:

The motor unit A⑦ may only be tilted in a limited range. Do not use force to set the tilt angle of the motor unit A⑦.

- If you will not be using the fan, turn it off according to the instructions contained in paragraph "Setting the speed and turning off the fan" and disconnect it from the power socket.

CLEANING AND MAINTENANCE

- Before cleaning, turn off the fan and disconnect the power cord from the power socket.
- Wipe the surface of the fan using a clean and dry wiping cloth. In the event that it is more dirty, disassemble the fan and wipe the individual parts (not the power plug) with a wiping cloth slightly dampened in a solution of warm water and neutral detergent. Then thoroughly wipe all parts until dry. Take care not to allow water to enter the motor unit A⑦ or the turn dial A⑩ when cleaning.
- Do not use abrasive cleaning products, petrol, solvents, etc. for cleaning.
- If you will not be using the fan for a longer period of time, store it in a clean, dry location that is out of reach of children.

TECHNICAL SPECIFICATIONS

Nominal voltage range	220–240 V
Nominal frequency.....	50 Hz
Rated power input.....	50 W
Safety class (for electric shock protection)	II
Noise level.....	50 dB(A)
Fan blade diameter	40 cm

The declared noise emission level of the appliance is 50 dB(A), which represents a level A of acoustic power with respect to a reference acoustic power of 1 pW.

Glossary of technical terms

Safety class for electric shock protection:

Class II – Electric shock protection is provided by double or heavy-duty insulation.

We reserve the right to change the text and technical specifications.

INSTRUCTIONS AND INFORMATION REGARDING THE DISPOSAL OF USED PACKAGING MATERIALS

Dispose of packaging material at a public waste disposal site.

DISPOSAL OF USED ELECTRICAL AND ELECTRONIC APPLIANCES



The meaning of the symbol on the product, its accessory or packaging indicates that this product shall not be treated as household waste. Please, dispose of this product at your applicable collection point for the recycling of electrical & electronic equipment waste. Alternatively in some states of the European Union or other European states you may return your products to your local retailer when buying an equivalent new product. The correct disposal of this product will help save valuable natural resources and help in preventing the potential negative impact on the environment and human health, which could be caused as a result of improper liquidation of waste. Please ask your local authorities or the nearest waste collection centre for further details. The improper disposal of this type of waste may fall subject to national regulations for fines.

For business entities in the European Union

If you wish to dispose of an electrical or electronic device, request the necessary information from your seller or supplier.

Disposal in other countries outside the European Union

If you wish to dispose of this product, request the necessary information about the correct disposal method from local government departments or from your seller.



This product meets all the basic EU regulation requirements that relate to it.