

Installation instructions

Before installation:

Before installed the washing base, please read this Installation instructions carefully and keep it for future reference.

- Please keep the Installation instructions useful for the installers to reference.
- Please according to instruction when installed it.
- Installation time: 1H
- It must to be install it correct with the specialty installers.

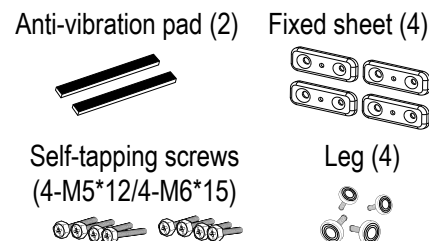
Warning: The washing is big and heavy, please be sure to two people installed it.

- Please read the user's manual if there is any other problem.

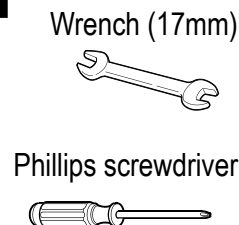
Preparation before installed:

- Removed the product package.
- Please spread out the package to protect the floor before installed the washing base.
- Take out the drawer clapboard, the installation appendix(in the packing box), and put them on the package.

Appendix



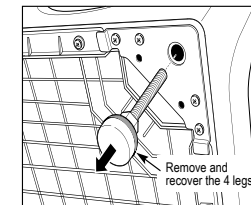
Tools



1 Removed the legs

I: Lean the washing machine, use the sleeve wrench to remove the legs.

II: Twist the screw with gasket.

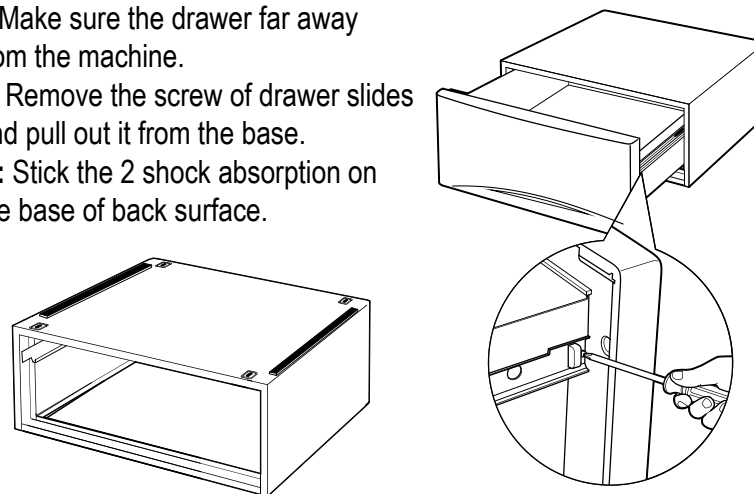


2 Ready for the parts of base

I: Make sure the drawer far away from the machine.

II: Remove the screw of drawer slides and pull out it from the base.

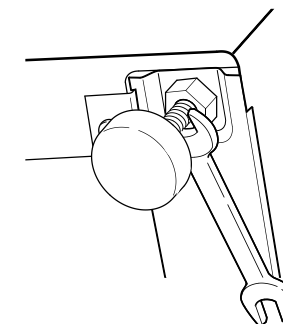
III: Stick the 2 shock absorption on the base of back surface.



4 Leveling the machine

I: Verticalized the washing machine and make sure laied it on the best location.

II: Adjusted the leg and tightened the screw nut is in touch with the washing base.

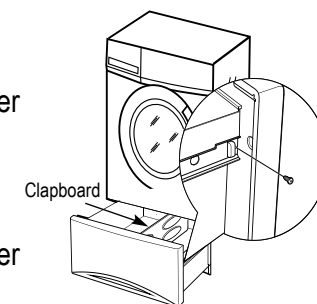


5 Installed the base again

I: Check the slides be closed.

II: Put the clapboard into the drawer trench.

III: Put the drawer slide and make the supporter align with the slide. Twist the screw between the drawer and slides.

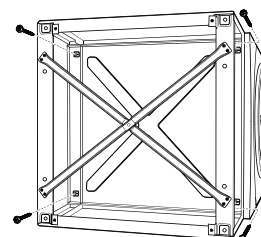
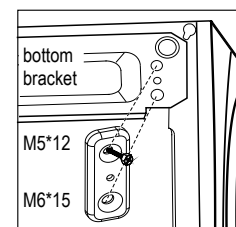


3 Installed the washing base

I: Laied the washing base, make sure the drawer and the machine facade in the same direction.

II: Aligned the hole of machine bottom bracket to installed the fixed sheet with screws (4-M5*12), and then connected the base and the bottom bracket with screws (4-M6*15).

III: Installed the legs with and make sure the gasket next to the base.



6 Installed checking

Ensure the drawer sliding smoothly and reading the user's manual to use the washing machine.

