

DISHWASHER

USER'S MANUAL

PHILCO



Famous for Quality the World Over

PDP 4

PDP 4 WH

Dear customer,
Thank you for buying a PHILCO brand product. So that your appliance serves you well, please read all the instructions in this user's manual.

CONTENT

PART 1: BEFORE PUTTING INTO OPERATION	2
PART 2: DESCRIPTION OF THE APPLIANCE	8
PART 3: INSTALLATION	10
• Unpacking	10
• Installation location of the appliance.....	10
• Water supply hose.....	11
• Drain hose	11
• Electrical connection.....	12
PART 4: BEFORE USING	13
• Before first use of dishwasher	13
• Water softener setting.....	13
• Adding salt into the salt compartment	14
• Adding rinsing aid.....	15
• Dishwashing detergents.....	16
• Using the dishwashing detergent	17
PART 5: CONTROL FEATURES	19
• Turning on the appliance.....	19
• Program change.....	19
• Adding dish.....	19
• Program end.....	20
• Program table	20
PART 6: WASHING DISHES / CUTLERY	21
PART 7: CLEANING AND MAINTENANCE.....	25
PART 8: TROUBLESHOOTING GUIDE.....	29
PART 9: INFORMATION SHEET	32

PART 1: BEFORE PUTTING INTO OPERATION

Important safety information



WARNING!

Read whole user's manual and keep in a safe place for using in future.

When using your dishwasher, follow the basic precautions including the following:



WARNING! HYDROGEN GAS IS EXPLOSIVE

Under certain conditions, Hydrogen gas may be produced in a hot-water system that has not been used for two weeks or more. HYDROGEN GAS IS EXPLOSIVE. If the hot-water system has not been used for such a period, before using the dishwasher turn on all hot-water faucets and let the water flow from each for several minutes. This will release any accumulated hydrogen gas. As the gas is flammable, do not smoke or use an open flame during this time.

WARNING! PROPER USE

- Do not abuse, sit on, or stand on the door or dish basket of the dishwasher; it could tip forward.
- Do not touch the heating element during or immediately after use.
- Do not operate your dishwasher unless all enclosure panels are properly in place. Open the door very carefully if the dishwasher is operating. There is a risk of water squirting out.
- When loading items to be washed:
 - Locate sharp items so that they are not likely to damage the door seal;

- Load sharp knives with the handles up to reduce the risk of cut-type injuries;
- Warning: Knives and other utensils with sharp points must be loaded in the basket with their points down or placed in a horizontal position.
- When using your dishwasher, you should prevent plastic items from contacting with heating element.
- Check that the detergent receptacle is empty after completion of the wash cycle.
- Do not wash plastic items unless they are marked dishwasher safe or the equivalent. For plastic items not so marked, check the manufacturer's recommendations.
- Use only detergent and rinse additives designed for an automatic dishwasher. Never use soap, laundry detergent, or hand washing detergent in your dishwasher.
- Other means for disconnection from the supply must be incorporated in the fixed wiring with at least 3mm contact separation in all poles.
- Keep children away from detergent and rinse aid, keep children away from the open door of the dishwasher, there could still be some detergent left inside.
- These instructions shall also be got form the manufacturer or responsible Vendor. To protect against the risk of electrical shock, do not immerse the unit, cord or plug in water or other liquid.
- This appliance can be used by children aged from 8 years and above and persons with reduced physical, sensory or mental capabilities or lack of experience and knowledge if they have been given supervision or instruction concerning use of the appliance in a safe way and understand the hazards involved. Children shall not play with the appliance. Cleaning and user maintenance shall not be made by children without supervision.

- Dishwasher detergents are strongly alkaline. They can be extremely dangerous if swallowed. Avoid contact with skin and eyes, and keep children away from the dishwasher when the door is open.
- The door should not be left in the open position since this could present a tripping hazard.
- If the supply cord is damaged, it must be replaced by the manufacturer or its service agent or a similarly qualified person in order to avoid a hazard.
- During installation, the power supply must not be excessively or dangerously bent or flattened.
- Do not tamper with controls.

Recycling

- Certain parts and packaging materials of your appliance were made using recycled materials.
- Plastic parts are marked using standard international markings.
- Cardboard parts were made from recycled paper and should be disposed of in a collection container for paper recycling.
- Such materials are not suitable for disposal together with mixed household waste. It is necessary to recycle them by taking them to a appropriate collection facility.
- Please contact your local authority for more information about disposal methods.

After unpacking the appliance

- Check the appliance for damage. Never turn on a damaged appliance, contact an authorised service center.
- Remove all packaging materials and take them to the nearest collection point according to local directives.

Important points during the installation of the appliance

- Select an appropriate, safe and even location for the installation of the appliance.
- Follow the here provided installation and connection instructions for the appliance.
- This appliance should be installed and repaired only by a qualified service technician.
- Always use only original spare parts.
- Prior to installation, make sure that the appliance is unplugged from the power socket.

Check that the household electrical fuse is connected according to valid local codes.

- All electrical connections must correspond to the values shown on the rating label.
- Pay special attention and check that the power plug is unplugged from the power socket.
- Never use an extension cord or a multi-socket adapter to connect the appliance. The power plug must be easily accessible after the installation of the appliance.
- After installing the appliance in an appropriate place, run the dishwasher empty.

Everyday use

- This appliance is designed for use in the household, do not use it for other purposes. Commercial use of the dishwasher may void the warranty.
- The water inside the appliance is not potable, do not drink it.
- Do not put any solvents or chemicals used for dissolving soils into the appliance as this presents an explosion hazard.

- This appliance must not be used by any persons (including children) with mental disabilities, weak strength or by inexperienced persons, unless they have been properly trained or schooled in the safe use of the product, or unless they are properly supervised by a qualified person who is responsible for their safety.

Child safety

- Do not allow children to play with the dishwasher or to start it.
- When the dishwasher door is open, pay increased attention if there are children nearby because there may be powder remains in the compartment and on the door.
- Make sure that an appliance put out of operation cannot cause any injuries to your children. Prevent the situation, where children could accidentally close themselves inside an old appliance. To prevent such a situation, destroy the door lock and cut off the power cord.

In the event of a malfunction

- In the event of any malfunction, always contact an authorised service center. Repairs performed by unqualified persons may result in damage to the appliance and may void the warranty.
- Prior to any repairs of the appliance, make sure that the power plug is unplugged from the power socket. Disengage the fuse or disconnect the appliance from the power socket. Never pull on the power cord when disconnecting the appliance from a power socket. Check that you have closed the water tap.

Recommendation

- To save electricity and water, remove large scraps from the dishes before placing them inside the dishwasher. Start the dishwasher only when it is fully loaded.

- Use the pre-wash function only when necessary.
- Always place dishes such as bowls, glasses and pots, etc. into the dishwasher upside down.
- Do not place dishes into the dishwasher that are atypical or not suitable for washing in a dishwasher.

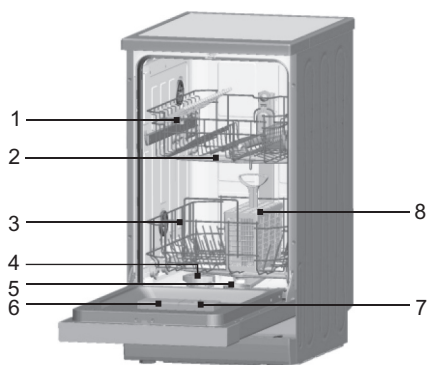
Dishes inappropriate for washing:

- Ashtrays, candle holders, polishing agents, paintings, chemical substances, products from iron alloys;
- Forks, spoons and knives with wooden or bone handles, handles from ivory or mother-of-pearl; dishes glued with adhesive, dishes soiled with abrasive, acidic or alkaline substances.
- Plastic dishes that are not heat resistant, and copper or pewter tableware.
- Aluminium or silver items (may become discoloured to a matte finish).
- Certain thin glass, porcelain with ornaments may be lost during the first wash, certain crystal tableware may lose its translucence, non-heat resistant cutlery, lead glass, boards, items made from synthetic fibers;
- Absorptive items such as sponges or kitchen wiping cloths are not suitable for washing in a dishwasher.

WARNING: We recommend that you purchase dishes and tableware suitable for washing in a dishwasher.

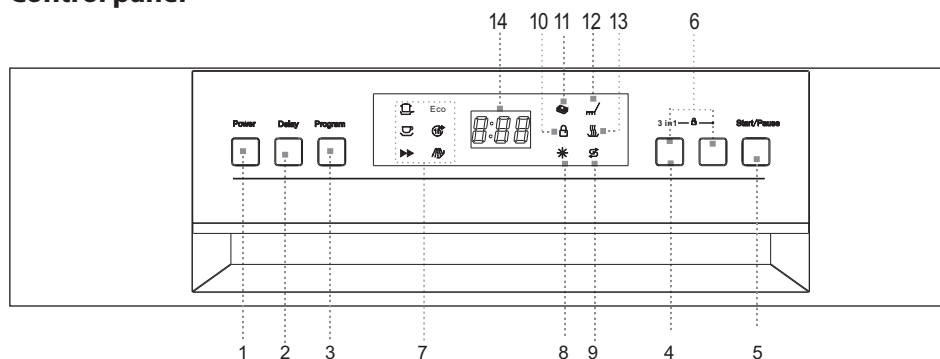
PART 2: DESCRIPTION OF THE APPLIANCE

This drawing is intended for information purposes about the individual parts and accessories of the product. Individual parts may differ depending on the model.



- 1 Upper Basket
- 2 Spray Arms
- 3 Lower Basket
- 4 Water Softener
- 5 Filters
- 6 Detergent Dispenser
- 7 Rinse Aid Dispenser
- 8 Cutlery basket

Control panel



1. **Power switch** – turn on / off
2. **Delay button** – set the delay time up to 24 hours
3. **Program button** – press repeatedly to choose a program. The corresponding program light control will be on thorough the washing cycle.
4. **3 in 1 button** – press to activate or deactivate the 3 in 1 feature.
5. **Start/Pause button** – start or pause the dishwasher
6. **Child lock button** – press simultaneously both buttons for at least 3 seconds, control panel will be locked and no button will be active.
7. **Program indicator light** – the light will be on after choosing the washing program
8. **Rinse aid refill indicator** – indicator lights up when dispenser need to be refilled
9. **Salt refill indicator** – indicator lights up when dispenser need to be refilled
10. **Child lock indicator** – after activating child lock feature, indicator flashes 6times, then it lights up.

11. **3 in 1 feature indicator** – indicator will light up once 3 in 1 feature is activated
12. **Washing light** – lights up when the dishwasher is washing.
13. **Drying light** – lights up when the dishwasher is drying.
14. **Digital display** – display the remaining time, error codes and delay start

PART 3: INSTALLATION

Warning

Keep this instruction manual in a safe place for future reference. If the appliance is sold, given away or moved, please ensure the manual is kept with the machine, so that the new owner may benefit from the advice contained within it.

Please read this instruction manual carefully: it contains important information regarding the safe installation, use and maintenance of the appliance.

If the appliance must be moved at any time, keep it in an upright position; if absolutely necessary, it may be tilted onto its back.

Unpacking

Remove the external packaging, remove the protective plastic film from the surface of the appliance (if used) and clean the external parts of the appliance with an agent designed for this purpose. Do not use steel wool or any coarse agents, which could irreparably damage the surface of the appliance. Carefully remove all papers and adhesive tape from the appliance, door and other parts packed in polystyrene. Remove documents and accessories from inside the appliance.

The packaging material is recyclable and is marked with a recycling symbol. For disposal, follow the local regulations. Packaging materials (plastic bags, polystyrene parts, etc.) must be kept out of the reach of children, because they present a possible source of danger.

Carefully inspect the appliance. If you discover any faults, stop the installation and contact the vendor.

Installation location of the appliance

When selecting the installation location, select a place where it will be easy to load and unload the dishes. Do not install the dishwasher in a room where the room temperature may fall below 0°C.

Prior to installation, take all packaging materials off the dishwasher and dispose of them properly. Locate the dishwasher near a water supply and drain connection. You need to take into consideration all possible connections that cannot be arbitrarily changed.

Do not hold the dishwasher by the door or control panel when placing it.

Leave sufficient space on both sides of the dishwasher so that it can be comfortably pulled out and then slid back into position for cleaning purposes.

Check that there are no water supply or drain hoses crimped during the installation. Also make sure that the appliance is not standing on the power cord.

Level the appliance using the levelling feet. Correct positioning of the appliance will ensure problem-free opening and closing of the door.

If the dishwasher door cannot be properly closed, check that the appliance is located on an even floor; level the appliance using the adjustable feet.

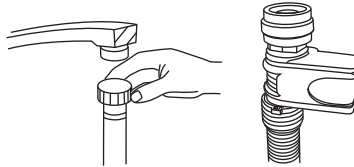
Position the dishwasher on a level and sturdy floor. If the floor is uneven, the front feet of the appliance may be adjusted until it reaches a horizontal position (the angle of inclination must not exceed 2 degrees). If the appliance is levelled correctly, it will be more stable and much less likely to move or cause vibrations and noise while it is operation.

Warning

Connection to the water and electricity supplies should only be performed by a qualified technician. The dishwasher should not stand on top of the water hoses or the electricity supply cable. The appliance must be connected to the water supply network using new piping. Do not use old piping.

Water supply hose

Connect the cold water supply hose to a threaded 3/4(inch) connector and make sure that it is fastened tightly in place. If the water pipes are new or have not been used for an extended period of time, let the water run to make sure that the water is clear and free of impurities. If this precaution is not taken, there is a risk that the water inlet can get blocked and the appliance could be damaged.

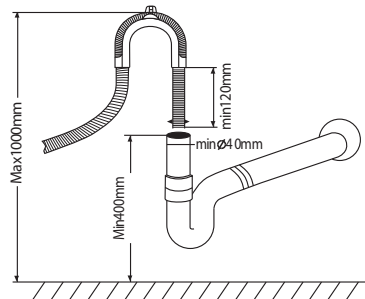


Drain hose

Fit the drainage hose of your machine to the drainage pipe without bending. If the length of the hose is not sufficient, apply to the authorized service. Remember that the length of the hose should not exceed 4 meters even when with an extension. If the drainage hose is longer than 4 m, the dishes will not be cleaned properly. Secure your hose firmly to the drainage pipe to avoid it coming off during the washing process.

If the sink is 1000mm higher from the floor, the excess water in hoses cannot be drained directly into the sink. It will be necessary to drain excess water from hoses into a bowl or a suitable container that is held outside and lower than the sink.

The waste connection must be at a height of between 50cm (minimum) and 100cm (maximum) from the bottom of the dish.



Electrical connection

Before inserting the plug into the electrical socket, make sure that:

- the socket is earthed and complies with current regulations;
- the socket can withstand the maximum load of the appliance, which is indicated on the data plate located on the inside of the door(see description of the appliance);
- the power supply voltage falls within the values indicated on the data plate on the inside of the door; the socket is compatible with the plug of the appliance. If this is not the case, ask an authorised technician to replace the plug (see assistance); do not use extension cables or multiple sockets.

Warning

Once the appliance has been installed, the power supply cable and the electrical socket should be easily accessible.

The cable should not be bent or compressed.

If the power supply cable is damaged, it must be replaced by the manufacturer or Technical Assistance Service in order to prevent all potential hazards.

The company shall not be held responsible for any incidents that occur if these regulations are not observed.

PART 4: BEFORE USING

Before first use of dishwasher

Before first use of the dishwasher check:

- the dishwasher is levelled and plugged correctly;
- the water inlet valve is open;
- no water leakage at the connections;
- wires are tightly connected;
- the dishwasher is turned on;
- hoses are not knotted;
- you removed all packaging material from the dishwasher;
- you set the water softener level;
- you fill the salt dispenser;
- you fill the rinse aid dispenser;
- you fill the detergent.

Water softener setting

The water softener is made so that it releases minerals and salts contained in water, which would have a negative effect on the operation of the dishwasher. The higher the content of these minerals and salts, the harder the water is. You should set the water softener according to the water hardness in your area.

The amount of salt dispensed can be set from H0 to H7. Salt is not required at the set value H0.

1. Find out about the hardness value of your tap water. Your water utility company will help you with this.
2. Set value can be found in the water hardness table.
3. Close the door.
4. Switch on „Power“ switch.
5. Hold down „Delay“ button and then press „Program“ button for 5 seconds. The buzzer rings one time and H.. flashes on the digital display.(factory setting is H4)
6. Each time the button is pressed, the set value increased by one level; when the value of H7 has been reached, the display jumps back to H0 (off).

Press „Program“ button. The chosen setting has now been stored.

Water hardness table

Water hardness		Mmol/l	Set value on the machine
°dH	Range		
0-6	Soft	0-1,1	H0
7-8	Soft	1,2-1,4	H1
9-10	Medium	1,5-1,8	H2
11-12	Medium	1,9-2,1	H3
13-16	Medium	2,2-2,9	H4
17-20	Hard	3,0-3,7	H5
21-30	Hard	3,8-5,4	H6
31-50	Hard	5,5-8,9	H7

Warning

If your dishwasher does not have a water softening system, you can skip this chapter.

The hardness of the water varies from place to place. If hard water is used in the dishwasher, deposits will form on the dishes and utensils. The appliance is equipped with a special softener that uses salts specifically designed to eliminate lime and minerals from the water.

Adding salt into the salt compartment

Always use salt intended for use with dishwasher.

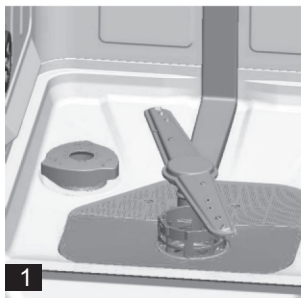
The salt container is located beneath the lower basket and should be filled as follows.

WARNING

Only use salt specifically designed for use in dishwashers! All other types of salt not specifically designed for use in a dishwasher, especially table salt, will damage the water softener. In case of damages caused by the use of unsuitable salt the manufacturer does not give any warranty nor is liable for any caused damages.

Only fill with salt just before starting one of the complete washing programs. This will prevent any grains of salt or salty water, which may have been split, remaining on the bottom of the machine for any period of time, which may cause corrosion. After the first wash cycle the control panel light expires.

- Remove the lower basket and then unscrew and remove the cap from the salt container – see fig. 1.
- If you are filling the container for the first time, fill 2/3 of its volume with water (around 500ml) – see fig. 2.



- Place the end of the funnel (supplied) into the hole and introduce about 1.2kg of salt. It is normal for a small amount of water to come out of the salt container.
- Carefully screw the cap back on.
- You should start a washing program immediately after the salt compartment has been refilled (we recommended the rinse or quick wash program). Otherwise the salt water could damage the filtration system, pump and other important parts of the dishwasher. This is not covered by the warranty.

WARNING

Only refill the salt compartment when the salt warning indicator light on the control panel lights up. Depending on how well the salt dissolves, the warning indicator light may stay on even after the salt compartment has been refilled.

If there is no salt warning indicator light on the control panel (on some models), you can estimate the amount after adding salt to the system by the number of cycles performed by the dishwasher.

If salt runs out anywhere, remove it by running the rinse program or the quick wash program.

Adding rinsing aid

The rinsing aid is released during the last rinse so that water drops do not remain on your dishes causing stains. It also improves drying due to the fact that all the water flows off the dishes. Your dishwasher is designed to only be used with a liquid rinsing aid. The rinsing aid compartment is located on the inside wall of the door next to the dishwashing detergent compartment.

Fill up the compartment by opening it and pouring in the rinsing aid until the indicator goes completely dark.

NOTE:

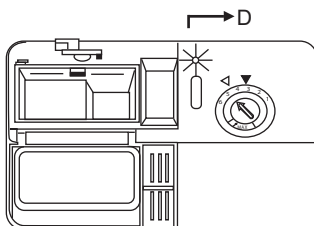
Use only branded dishwasher rinsing aids. Never pour other mixtures (such as liquid detergents, etc.) into the rinsing aid compartment. Otherwise the dishwasher may be damaged.

When should the rinsing aid be refilled?

If the rinsing aid compartment is empty, the relevant indicator light on the control panel will turn on indicating the need to add rinsing aid. After filling the compartment with rinsing aid the entire indicator is dark. As the rinsing aid is gradually used up the point of the indicator becomes smaller. Never allow the amount of rinsing aid to fall below 1/4 of the compartment volume.

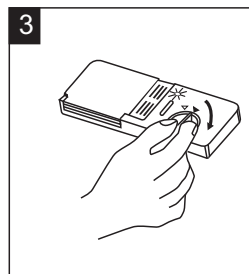
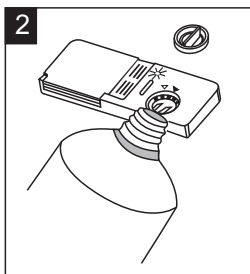
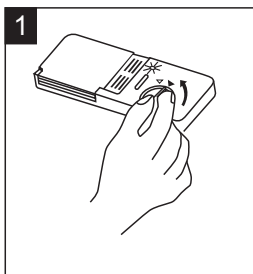
If there is no rinse-aid warning light on the control panel, you can judge the amount of rinse-aid by the color of the optical level indicator „D“ located next to the cap (see picture below).

- Indicator
- Full
 - ◐ ¾ full
 - ◑ ½ full
 - ◒ ¼ full – should be refilled
 - Empty



Filling process

1. To open the dispenser, turn the cap to the „open“ (left) arrow and lift it out.
2. Pour the rinse aid into the dispenser, be careful not to overfill.
3. Replace the cap by inserting it aligned with „open“ arrow and turning it to the „closed“ (right) arrow.

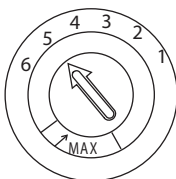


WARNING

Clean up any rinse aid spill during filling with an absorbent cloth to avoid excess foaming during the next wash. Do not forget to place the lid back.

Setting dial (rinse)

The rinsing aid compartment has six different settings. Its factory level setting is 3. If stains form on the dishes or if there is a problem with drying the dishes, increase the released amount of the rinsing aid by removing the lid and turning the dial to „4“. If despite this step the dishes are not without stains after drying, adjust the setting again to a higher level until the dishes are clean after drying. If rinsing aid residues remain on the dishes, reduce the level to 1 – 2. The recommended setting is „3“. (The value set by the manufacturer is „5“.)



NOTE:

Increase the dose if there are drops of water or lime spots on the dishes after washing. Reduce it if there are sticky whitish streaks on the dishes or a bluish film on glassware or knife blades.

Dishwashing detergents

Dishwashing detergents with their chemical additives are essential for the removal of soils, their decomposition and removal from the dishwasher. For this purpose the majority of commercial quality dishwashing detergents are suitable.

Dishwashing detergents

There are 3 types of dishwashing detergents:

1. containing phosphates and chlorine;
2. containing phosphates and without chlorine;
3. without phosphates and without chlorine.

New dishwashing detergents usually do not contain phosphates and so the softening function of the phosphates is missing. In such a case we recommended the use of a softening salt even when the water hardness is a mere 6°dH. If you use dishwashing detergents without phosphates and have hard water, this leads to the frequent appearance of white stains on dishes and glasses. In such a case you will therefore achieve better results if you add more dishwashing detergent. Chlorine-free dishwashing detergents whiten only slightly. For this reason strong and colourful stains will not be completely removed. In such a case select a program with a higher temperature.

Concentrated dishwashing detergents

Based on their chemical composition dishwashing detergents are divided into two basic types:

- standard, alkaline dishwashing detergents with caustic additives;
- less alkaline dishwashing detergents with natural enzymes.

Using „standard“ washing programs in combination with concentrated dishwashing detergents reduces pollution and is appropriate for your dishes. These programs are specifically improved with enzymes, which are contained in concentrated dishwashing detergents that can dissolve soils. For this reason you can achieve the same results with concentrated dishwashing detergents using a „standard“ washing program, as you would achieve only with the use of an „intensive“ program.

Dishwashing tablets

The dissolving speed of various brands of dishwashing tablets may differ. For this reason some tablets may not dissolve during the short programs and therefore fail to perform their cleaning function. So when using tablets use the long programs to ensure the removal of all dishwashing detergent remains.

Dishwashing detergent compartment

You must fill up the compartment before starting any washing cycle according to the instructions contained in the dishwashing cycle table. Your dishwasher uses less dishwashing detergent and rinsing aid than an ordinary dishwasher. Generally a single tablespoon of dishwashing detergent is sufficient for a standard wash. For more heavily soiled dishes you will need more dishwashing detergent. Always add the dishwashing detergent immediately before starting the dishwasher, otherwise it could become damp and subsequently not dissolve completely.

NOTE:

If the lid is closed, press the button. The lid will open.

Always add the dishwashing detergent immediately before starting each washing cycle.

Use only branded dishwashing detergents designed for dishwashers.

WARNING:

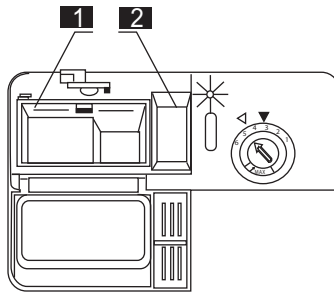
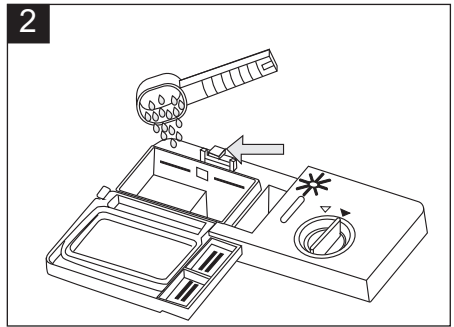
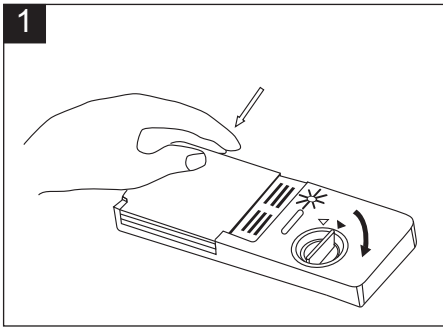
The dishwashing detergent is corrosive! Keep it out of children's reach.

Using the dishwashing detergent

Use only dishwashing detergent specifically designed for use in dishwashers. Store the dishwashing detergent in a dark and dry place. Do not put dishwashing detergent powder into the compartment unless you intend to start the dishwasher.

Dosage of the dishwashing detergent

1. Release the clip to open the dishwashing detergent compartment.
2. Place the required amount of dishwashing detergent into the main wash detergent compartment (if you are using a dishwashing powder). Make sure that the amount of the dishwashing detergent is between the MIN and MAX level lines.
3. If the dishes are overly soiled, also add dishwashing detergent into the pre-wash partition.
4. Close the dishwashing detergent compartment.
5. Now turn on the dishwasher.



NOTE:

The mark „MIN“ in the main wash detergent compartment corresponds to approximately 20 g of dishwashing detergent. The pre-wash detergent compartment will take approximately 5 g of dishwashing detergent. Follow the recommended dosages and storage indicated by the manufacturer on the packaging of the dishwashing detergent. Close the lid and press it down until it clicks in. If the dishes are heavily soiled, also add dishwashing detergent into the pre-wash compartment. This dose will be used during the pre-wash phase of the wash.

NOTE:

You can find the information about dishwashing detergent dosages in the washing program table. Keep in mind that the results may differ depending on the degree of soiling and hardness of the water used. Follow the manufacturer's recommendations on the dishwashing detergent package.

PART 5: CONTROL FEATURES

Turning on the appliance

1. Load dishes into the upper and lower basket (see the next chapter). Check the salt and rinse aid indicators. Load the dishwashing detergent.
2. Insert the plug into the socket (220 – 240 V ~ 50 Hz). Open the water inlet valve.
3. Close the door and press the Power button.
4. Select the washing program by the Program button.
5. Then press Start / Pause button.

Note:

You should hear a click sound when closing the door.
When the washing is finished, press the Power button and open the door.

Program change

A cycle that is underway can only be modified if it has only been running for a short time. Otherwise, the detergent may have already been released, and the appliance may have already drained the wash water. If this is the case, the detergent dispenser must be refilled.

1. Press Power button to cancel the program.
2. Select a new program by the Program button.
3. Press Power button again.

Note:

If you open the door when washing, the machine pauses and warning alarm rings, the display appears E1.
When you close the door, the machine will keep on working.

The 6 program lights show the state of the dishwasher:

- a) One of the program lights on--> cycle running
- b) One of the program lights blinking -->pause

Note:

If all the lights begin to glimmer, that indicates the machine is out of order, please turn off the main power and water supply before calling a service.

Adding dish

A forgotten dish can be added any time before the detergent cup opens.

1. Open the door a little to stop the washing.
2. After the spray arms stop working, you can open the door completely.
3. Add forgotten dishes.
4. Close the door, the dishwasher will work after ten seconds.

 **WARNING**

Open the dishwasher door only at exceptional cases and always open the door slightly and wait until the spray arms end. Pay higher attention, water in the dishwasher could be very hot and it could cause burns.

Program end

Once the program ends, the display will show **0:00**, and the buzzer rings 6 times. The program has been finished.

1. Press Power button to turn off the dishwasher.
2. Close the water valve.
3. Carefully open the dishwasher door. Attention – hot steam may escape from the dishwasher!






Warning:

Dishes are very hot and sensitive to crack. Let the dishes cool down for about 15 minutes before removing from the dishwasher.

Recommendation:

It is advisable to remove the dishes from lower basket and then from upper basket.

Program table

Program	Type of dish	Cycle	Washing detergent	Duration (min)	Energy (kWh)	Water (l)
 Intensive	Heavy soiled dishes, such as pots, pans, casseroles, dishes with dried food.	Pre-wash Main wash (62°C) Rinse 1 Rinse 2 Hot rinse Drying	5/22 (or 3 in 1)	170	1.2	16.4
Eco (*EN50424) (Standard program)	Normally soiled dishes, pots, pans, plates, glasses. Everyday use dishes	Pre-wash Main wash (46°C) Hot rinse Drying	5/22 (or 3 in 1)	168	0.78	10
 Light	Washing cycle for delicate dishes, sensitive to high temperatures (run straight after use)	Main wash (45°C) Rinse Hot rinse Drying	20 (or 3 in 1)	82	0.76	10
 60 minutes	Lightly or normally soiled plates and pans of daily use	Pre-wash Main wash (60°C) Hot rinse Drying	5/20	60	0.84	10
 Quick	Short wash for lightly soiled dishes, without drying	Main wash (45°C) Hot rinse	15	40	0.6	6.8
 Pre-wash	Rinse dishes you plan to wash later that day	Pre-wash	/	13	0.01	3.6

- * EN 50242: this program is the test cycle
The information for comparability test in accordance with EN50242:
- Capacity: 9 sets
 - Position of upper basket: lower position
 - Rinse aid setting: 5 (or 4 for 4 setting model dispenser)

PART 6: WASHING DISHES / CUTLERY

Purchase dishes designated as dishwasher safe.

Use a gentle dishwashing detergent marked as „gentle on dishes“. If necessary seek out further information from the dishwashing detergent manufacturer.

For certain types of dishes select a lower temperature.

To prevent possible damage, remove glassware and cutlery from the dishwasher as soon as possible after the end of the wash.

Unsuitable are:

- cutlery with wooden, bone or mother-of-pearl handles;
- plastic parts that are not heat resistant;
- older cutlery with glued parts that are not heat resistant;
- glued cutlery or dishes;
- pewter or copper dishes;
- crystal glassware;
- metal parts susceptible to corrosion;
- wooden cutting boards;
- dishes made from synthetic fibers.

Partially suitable are:

- some types of glass may corrode after several washes;
- silver and aluminium cookware may become discoloured by the wash;
- glazed patterns may fade if washed frequently.

NOTE:

Your dishwasher will achieve the best performance if you follow these instructions for loading dishes into the racks. The function and appearance of the racks and the cutlery basket may differ depending on the model of the dishwasher.

NOTE:

Do not place any items into the dishwasher soiled by cigarette ash, wax, varnish or paint. When buying new dishes, check that they are dishwasher safe.

First remove remaining or burned on foods. It is not necessary to wash dishes under running water.

Load the dishes into the dishwasher as follows.

Items such as cups, glasses, pots / pans, etc., should be placed bottom up.

Curved cookware and cookware with projections should be placed at an angle to allow water to freely flow out.

Place dishes safely so that they cannot tip over.

Place dishes in such a way that the spraying arms can rotate freely during the wash.

NOTE:

Do not wash very small pieces in the dishwasher because they can easily fall out of the rack.

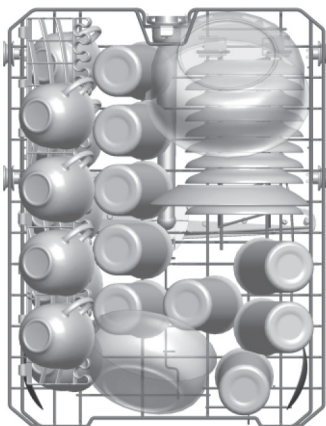
Taking dishes out of the dishwasher

To prevent water dripping down from the upper rack onto the dishes in the lower rack, we recommended you first empty the lower rack and only then the upper rack.

Loading the upper rack

The upper rack is designed for lighter dishes:

glasses, cups and mugs and saucers, also small plates, small bowls and shallow pots (if they are not too soiled). Place the dishes in such a way that they will not be moved by the sprayed water current.

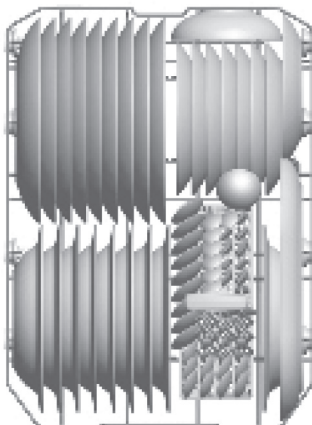


Loading the lower rack

We recommend you place larger cookware and hard-to-clean cookware into the lower rack:

pots, pans, lids, serving plates and bowls.

It is better to place serving plates and lids on the sides of the rack, so that the spraying arm does not become blocked.



Remember that:

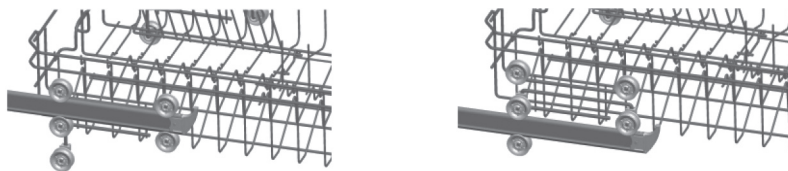
Pots, serving bowls, etc. must be placed bottom up; deep pots should be placed at an angle so that water can freely run out of them; the tines on the lower rack can be folded, so that you can load larger pots and pans or several smaller items.

Special cookware, e.g. large pans or plates should be placed in the lower rack. The recommended installation is shown below.

Setting upper basket

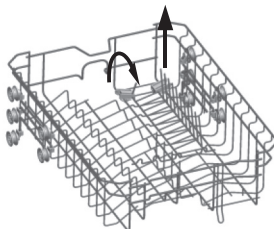
Setting the height of upper basket

The height of the upper rack can be set so as to create more space for larger dishes in the upper / lower rack. The height of the upper rack can be set without removal by simply lifting / pushing down the upper rack on both sides. Always check that both sides of the rack are at the same level.



Tilt down the tines in the upper basket

The upper rack is equipped with special tilting tines making it possible to quickly and easily adjust the upper rack area based on your current needs.



Setting lower basket

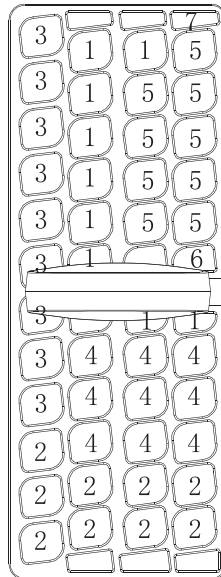
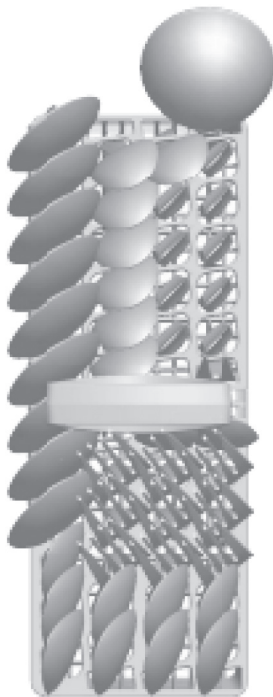
Tilt down the tines in the lower basket

The lower rack contains 4 tine sections, which can be tilted down, and they make placing dishes into the upper rack easier, e.g. pots, pans, plates, etc. Tilt the tines up or down as necessary.



Cutlery basket

Cutlery should be placed in the cutlery basket with handles at the bottom: If the basket has side baskets, the spoon should be loaded individually into the appropriate slots, especially long utensils should be placed in the horizontal position at the front of the upper basket.



1. Coffee spoons
2. Dessert spoons
3. Soup spoons
4. Forks
5. Knives
6. Serving forks
7. Ladles

⚠ WARNING!

Do not let any item extend through bottom.

Sharp cutlery place the sharp end downwards!

For your own safety and as a reason of maximum washing performance, make sure the cutlery:

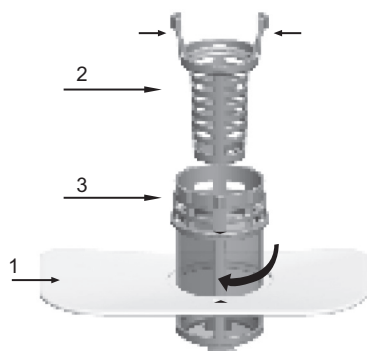
- Do not lay on each other;
- Cutlery handles let downwards;
- Knives and other dangerous object handles let upwards.

PART 7: CLEANING AND MAINTENANCE

BEFORE CLEANING, REGULAR MAINTENANCE OR OTHER HANDLING OF THE APPLIANCE, APART FROM THE OPERATION OF THE APPLIANCE, ALWAYS CHECK THAT YOU HAVE DISCONNECTED ITS POWER PLUG FROM THE POWER SOCKET.

Filtration system

The filter prevents food remains or other foreign items from entering the pump. Food remains may clog the filter and in such a case it is necessary to take it out. The filtration system consists of a coarse filter, a plastic filter and a micro-filter (fine filter).



1 Plastic filter

Food remains and soils captured by this filter are pulverised by a special jet on the bottom spraying arm and flushed down the drain.

2 Coarse filter

Larger parts, e.g. bits of bone or glass, which could clog the drain are stopped by the coarse filter. Remove the soils caught by this filter by taking the filter out - gently press the plug on the top of this filter and lift it up.

3 Fine filter

This filter stops the remains of soils and food in the area of the water tank and prevents the remains from returning back to the area of the dishwasher during the wash.

Installing the filter

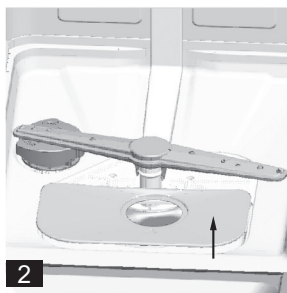
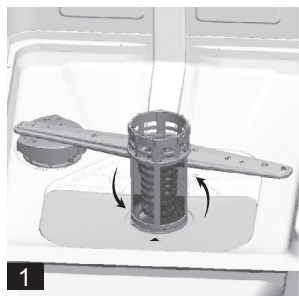
The filter effectively removes food remains from the water used to wash the dishes and so this water can be used repeatedly during the wash. You will achieve better wash results if you regularly clean out the filter. For this reason it is better to remove the food remains from the filter after every wash by flushing out the semi-circular filter and containers under running water. Take out the filter by pulling upwards on the container handle.

▲ WARNING!

Never run the dishwasher without filters.

An incorrectly seated filter may lower the efficiency of the dishwasher and cause damage to dishes.

1. To remove and clean the filtration system turn the filter anticlockwise and then lift it up.
2. Pull out the metal/plastic filter.
3. Take the coarse filter out of the fine filter.



NOTE:

Follow all the steps of this procedure remove the filtration system; then reinstall it by proceeding from step 3 to step 1.

Recommendation:

After every use of the dishwasher check that the filters are not clogged.

You can take out the filtration system by unscrewing the coarse filter. Remove any food remains and clean out the filters under running water.

NOTE:

You should clean the entire filtration set once per week.

Cleaning the filters

To clean the coarse and fine filters use a brush. Reassemble the individual parts of the filter as shown on pictures 1, 2 and 3. Reinsert them back into the dishwasher in their place and press them downwards.

⚠ WARNING:

Do not knock on the filters when cleaning them. Otherwise the filters could bend, which would lower the efficiency of the dishwasher. Never use the dishwasher without a filter. An incorrectly seated filter may lower the efficiency of the dishwasher and cause damage to dishes.

Dishwasher care

You can clean the control panel using a light damp wiping cloth. Thoroughly dry the area after cleaning. Clean the exterior parts of the dishwasher using a quality polish. Never use any sharp items, steel wool or coarse, sandy cleaning products to clean any part of the dishwasher.

Cleaning the door

To clean the door edges use a soft, warm, damp wiping cloth. To prevent water leaking into the door lock or its electronic parts, do not use any cleaning agents in sprays.

⚠ WARNING:

Never use cleaning agents in sprays to clean the dishwasher door because this could damage the door lock and electrical parts. Do not use sandy cleaning agents or certain types of kitchen paper towels, because they could scratch or leave marks on the stainless steel parts of the dishwasher.

Protection against frost

In winter take steps against the dishwasher freezing. After every wash do the following:

Disconnect the dishwasher from the power source.

Close the water inlet and disconnect the supply hose from the water valve.

Drain water from the water supply hose and the water valve. (Drain the water into a container.)

Reconnect the water supply hose to the water valve.

Take out the filter on the bottom of the dishwasher and using a sponge soak up the water from the waste tank.

NOTE:

If your dishwasher is not working because it has frozen, contact an authorised service technician.

Cleaning the spraying arms

It is important to regularly clean the spraying arms so that hard water minerals do not clog the jets and the bearings of the spraying arms. Detach the spraying arms by turning the nut clockwise, remove the washer from the spraying arm and then the spraying arm itself. Wash the spraying arms in warm soapy water and clean out the jets using a brush. After thoroughly flushing them reattach them.



How to keep your dishwasher in good condition?

After every wash

After every wash close the water inlet into the dishwasher and leave the door slightly open so that humidity that would otherwise accumulate inside is ventilated out.

Disconnect from the power socket

Always disconnect the dishwasher from the power source before cleaning or any maintenance.

No solvents or sandy cleaning agents

Never clean the external or rubber parts of the dishwasher using solvents or sandy cleaning agents. Only use a wiping cloth dipped in warm soapy water. Remove stains from the surface of the dishwasher using a wiping cloth dipped in water with a little vinegar or a cleaning agent specially designed for dishwashers.

When taking out of operation for an extended period

We recommend that you run an empty cycle without dishes and then disconnect the dishwasher from the power source, shut off the water supply and leave the dishwasher door slightly open. This will help to increase the lifetime of the door seals and will prevent the accumulation of odours inside the dishwasher.

Moving the appliance

In the event that you need to move the appliance, you must move it in the vertical position. If it is really necessary place it down on its rear side.

Seal

One of the factors causing odours inside the dishwasher is food remains, which get caught in the seals. You can prevent this by regularly cleaning with a damp sponge.

PART 8: TROUBLESHOOTING GUIDE

The appliance may only be repaired by an authorised service center.

Before calling the authorised service center, check whether you can remedy the problem yourself by reading the instructions or proceeding according to the operating instruction.

You may be charged repair fees even within the scope of a valid warranty.

Error codes

Error codes	Description	Possible case
E1	Door is open	Door is open while the appliance is running.
E2	Water inlet valve.	Water inlet valve malfunction.
E3	Water drainage.	Water drainage malfunction
E4	Temperature sensor	Temperature sensor malfunction
E5	Overflow/leakage	Overflow occurs/Water leakage occurs
E6	Water leakage	Water leakage occurs
E7	Heating element	Abnormal heating

Troubleshooting

Problem	Possible cause	What to do...
Dishwasher does not turn on.	Fuse is blown or circuit breaker off.	Replace the fuse or reset the circuit breaker. Remove all appliances sharing the same circuit with dishwasher.
	Power button was not pressed.	Press the Power button and ensure the door is closed. Make sure the power cord is correctly plugged into the power socket.
	Low water pressure	Check the water supply is connected properly and water inlet valve is open.
Drain pump does not stop.	Overflow	The system is designed to detect an overflow. When it does, it shuts off the circulation pump and turns on the drain pump.
Noise	Some audible sounds are normal	Sound from detergent cup opening.
	Dishes are not properly loaded.	To ensure everything is secured in the dishwasher.
	Motor hums.	Dishwasher has not been used regularly. If you do not use it often, remember to set it to fill and pump out every week, which will help keep the seal moist.
Suds in the tub	Improper detergent	Use only the special dishwasher detergent to avoid suds. If this occurs, open the dishwasher and let suds evaporate. Add 1 gallon of cold water to the tub. Close and latch the dishwasher, then start the „pre-rinse“ wash cycle to drain out the water... Repeat if necessary.
Stained tub interior	Detergent with colorant was used	Make sure that the detergent is the one without colorant.

Problem	Possible cause	What to do...
Dishes and flatware not clean	Improper program	Select a stronger program.
	Improper basket loading	Make sure that the action of the detergent dispenser and spray arms are not blocked by large dishware.
Spots and filming on glasses and flatware	<ol style="list-style-type: none"> 1 Extremely hard water 2 Low inlet temperature 3 Overloading the dishwasher 4 Improper loading 5 Old or damp powder detergent 6 Empty rinse agent dispenser 7 Incorrect dosage of detergent 	<p>To remove spots from glassware:</p> <ol style="list-style-type: none"> 1 Take out all metal utensils out of the dishwasher. 2 Do not add detergent. 3 Choose the longest cycle. 4 Start the dishwasher and allow it to run for about 18 to 22 minutes, then it will be in the main wash. 5 Open the door to pour 2 cups of white vinegar into the bottom of the dishwasher. 6 Close the door and let the dishwasher complete the cycle. If the vinegar does not work: Repeat as above, except use 1/4 cup (60 ml) of citric acid crystals instead of vinegar.
Cloudiness on glassware	Combination of soft water and too much detergent	Use less detergent if you have soft water and select a shortest cycle to wash the glassware and to get them clean.
Yellow or brown film on inside surfaces	Tea or coffee stains	<p>Using a solution of 1/2 cup of bleach and 3 cups of warm water to remove the stains by hand.</p> <p>⚠ WARNING You have to wait for 20 minutes after a cycle to let the heating elements cool down before cleaning interior; otherwise, burns will happen.</p>
	Iron deposits in water can cause an overall film	You have to call a water softener company for a special filter.
White film on inside surface	Hard water minerals	To clean the interior, use a damp sponge with dishwasher detergent and wear rubber gloves. Never use any other cleaner than dishwasher detergent for the risk of foaming or suds.
The Detergent dispenser lid cannot be closed properly	Clogged detergent residue is blocking the catch	Clean the detergent from the catch.
Detergent left in dispenser cups	Dishes block detergent cups	Re-loading the dishes properly.
Steam	Normal phenomenon	There is some steam coming through the vent by the door latch during drying and water draining.
Black or gray marks on dishes	Aluminum utensils have rubbed against dishes	Use a mild abrasive cleaner to eliminate those marks.
Water standing on the bottom of the tub	This is normal	A small amount of clean water around the outlet on the tub bottom keeps the water seal lubricated.

Problem	Possible cause	What to do...
Dishwasher leaks	Overfill dispenser or rinse aid spills	Be careful not to overfill the rinse aid dispenser. Spilled rinse aid could cause over sudsing and lead to overflowing. Wipe away any spills with a damp cloth.
	Dishwasher is not levelled.	Make sure the dishwasher is levelled.

If the problem persists, turn off the dishwasher, unplug the power cord.

PART 9: INFORMATION SHEET

Trade mark Philco: **PHILCO** 

Brand	Philco
Model number	PDP 4 / PD 4 WH
Dishwasher capacity	9
Energy efficiency class ¹	A+
Annual power consumption ²	222 kWh
Power consumption of standard washing cycle	0.78 kWh
Power consumption of off mode	0.35 W
Power consumption of left-on mode	0.9 W
Annual water consumption ³	2800 l
Drying efficiency class ⁴	A
Standard cleaning cycle ⁵	Eco
Program duration of the standard cleaning cycle	168 min
Noise level	45 dB (A) re 1 pW
Mounting	Freestanding
Could be built-in	Yes
Height	84.5 cm
Width	44.8 cm
Depth (with connectors)	60.0 cm
Power consumption	1850 W
Rated voltage / frequency	220 – 240 V ~ 50 Hz
Water pressure	0.4 – 10 bar = 0.04 – 1.0 MPa
Water temperature	Max. 65°C

¹ A+++ (highest efficiency) to D (lowest efficiency).

² Energy consumption „222“ kWh per year, based on 280 standard cleaning cycles using cold water fill and the consumption of the low power modes. Actual energy consumption will depend on how the appliance is used.

³ Water consumption „2800“ liters per year, based on 280 standard cleaning cycles. Actual water consumption will depend on how the appliance is used.

⁴ A (highest efficiency) to G (lowest efficiency).

⁵ This program is suitable for cleaning soiled normally soiled tableware and that it is the most efficient program in terms of its combined energy and water consumption for that type of tableware.

The device meets the European standards and the directives in the current version at delivery.

The above values have been measured in accordance with standards under specified operating conditions.

- LVD 2006/95/EC
- EMC 2004/108/EC
- EUP 2010/1016

The above mentioned data may change without prior notice.

Manufacturer may change the design and technical specifications without prior notice.

INSTRUCTIONS AND INFORMATION REGARDING THE DISPOSAL OF USED PACKAGING MATERIALS

Dispose of packaging material at a public waste disposal site.

DISPOSAL OF USED ELECTRICAL AND ELECTRONIC APPLIANCES



The meaning of the symbol on the product, its accessory or packaging indicates that this product shall not be treated as household waste. Please, dispose of this product at your applicable collection point for the recycling of electrical & electronic equipment waste. Alternatively in some states of the European Union or other European states you may return your products to your local retailer when buying an equivalent new product. The correct disposal of this product will help save valuable natural resources and help in preventing the potential negative impact on the environment and human health, which could be caused as a result of improper liquidation of waste. Please ask your local authorities or the nearest waste collection centre for further details. The improper disposal of this type of waste may fall subject to national regulations for fines.

For business entities in the European Union

If you wish to dispose of an electrical or electronic device, request the necessary information from your seller or supplier.

Disposal in other countries outside the European Union

If you wish to dispose of this product, request the necessary information about the correct disposal method from local government departments or from your seller.



This product meets all the basic EU regulation requirements that relate to it.

Changes to the text, design and technical specifications may occur without prior notice and we reserve the right to make these changes.

Manufacturer/Importer:
Fast ČR, a.s.
Praha 10, Černokostecká 2111
CZ-10000; CZECH REPUBLIC

PHILCO® 

**is a registered trademark used under license from
Electrolux International Company, U.S.A.**