

**INDUCTION
GLASS-CERAMIC HOB
OWNER'S MANUAL**

PHILCO



Famous for Quality the World Over

**PHD 64B
PHD 62B**

**Dear customer,
Thank you for buying a PHILCO brand product. So that your appliance serves you well, please read all the instructions in this user's manual.**

Dear customer,

Thank you for having chosen a induction hob.

In order to install properly your appliance and to make the best use of it, please read this entire instruction manual carefully.

CONTENTS

PART 1: SAFETY INFORMATION.....	2
PART 2: DESCRIPTION OF THE APPLIANCE	7
Technical characteristics.....	7
Control panel.....	8
PART 3: USE OF THE APPLIANCE	8
Display.....	8
Ventilation.....	8
PART 4: STARTING-UP AND APPLIANCE MANAGEMENT	9
Before the first use	9
Induction principle.....	9
Sensitive touch.....	9
Starting-up	9
Pan detection.....	10
Residual heat indication	10
Booster function.....	10
Timer	11
Control panel locking	12
PART 5: COOKING ADVICES	13
Pan quality	13
Pan dimension.....	13
Examples of cooking power setting.....	14
PART 6: MAINTENANCE AND CLEANING.....	14
PART 7: WHAT TO DO IN CASE OF A PROBLEM	15
PART 8: INSTALLATION INSTRUCTIONS	16
PART 9: ELECTRICAL CONNECTION	17
Connection of the hob.....	17



This appliance has been tested in accordance with the directives in force in the European Union.
This appliance conforms to the relevant safety provisions for electrical appliances in force in the European Union.

PART 1: SAFETY INFORMATION

PRECAUTIONS BEFORE USING

- UNPACK ALL THE MATERIALS.
- THE INSTALLATION AND CONNECTING OF THE APPLIANCE HAVE TO BE DONE BY APPROVED SPECIALISTS. THE MANUFACTURER CANNOT BE RESPONSIBLE FOR DAMAGE CAUSED BY BUILDING-IN OR CONNECTING ERRORS.
- TO BE USED, THE APPLIANCE MUST BE WELL-EQUIPPED AND INSTALLED IN A KITCHEN UNIT AND AN ADAPTED AND APPROVED WORK SURFACE.
- THIS DOMESTIC APPLIANCE IS EXCLUSIVELY FOR THE COOKING OF FOOD, TO THE EXCLUSION OF ANY OTHER DOMESTIC, COMMERCIAL OR INDUSTRIAL USE.
- REMOVE ALL LABELS AND SELF-ADHESIVES FROM THE CERAMIC GLASS.
- DO NOT CHANGE OR ALTER THE APPLIANCE.
- THE COOKING PLATE CANNOT BE USED AS FREESTANDING OR AS WORKING SURFACE.
- THE APPLIANCE MUST BE GROUNDED AND CONNECTED CONFORMING TO LOCAL STANDARDS.
- DO NOT USE ANY EXTENSION CABLE TO CONNECT IT.
- THE APPLIANCE CANNOT BE USED ABOVE A DISHWASHER OR A TUMBLER DRYER:
STEAM MAY DAMAGE THE ELECTRONIC APPLIANCES.

- THE APPLIANCE IS NOT INTENDED TO BE OPERATED BY MEANS OF EXTERNAL TIMER OR SEPARATE REMOTE CONTROL SYSTEM.
- CAUTION : THE COOKING PROCESS HAS TO BE SUPERVISED. A SHORT TERM COOKING PROCESS HAS TO BE SUPERVISED CONTINUOUSLY.

USING THE APPLIANCE

- SWITCH THE HEATING ZONES OFF AFTER USING.
- KEEP AN EYE ON THE COOKING USING GREASE OR OILS: THAT MAY QUICKLY IGNITE.
- BE CAREFUL NOT TO BURN YOURSELF WHILE OR AFTER USING THE APPLIANCE.
- MAKE SURE NO CABLE OF ANY FIXED OR MOVING APPLIANCE CONTACTS WITH THE GLASS OR THE HOT SAUCEPAN.
- MAGNETICALLY OBJECTS (CREDIT CARDS, FLOPPY DISKS, CALCULATORS) SHOULD NOT BE PLACED NEAR TO THE ENGAGED APPLIANCE.
- METALLIC OBJECTS SUCH AS KNIVES, FORKS, SPOONS AND LIDS SHOULD NOT BE PLACED ON THE HOB SURFACE SINCE THEY CAN GET HOT.
- IN GENERAL DO NOT PLACE ANY METALLIC OBJECT EXCEPT HEATING CONTAINERS ON THE GLASS SURFACE. IN CASE OF UNTIMELY ENGAGING OR RESIDUAL HEAT, THIS ONE MAY HEAT, MELT OR EVEN BURN.
- NEVER COVER THE APPLIANCE WITH A CLOTH OR A PROTECTION SHEET. THIS IS SUPPOSED TO BECOME VERY HOT AND CATCH FIRE.

- THIS APPLIANCE CAN BE USED BY CHILDREN AGED FROM 8 YEARS AND ABOVE AND PERSONS WITH REDUCED PHYSICAL, SENSORY OR MENTAL CAPABILITIES OR LACK OF EXPERIENCE AND KNOWLEDGE IF THEY HAVE BEEN GIVEN SUPERVISION OR INSTRUCTION CONCERNING USE OF THE APPLIANCE IN A SAFE WAY AND UNDERSTAND THE HAZARDS INVOLVED.
- CHILDREN SHALL NOT PLAY WITH THE APPLIANCE.
- CLEANING AND USER MAINTENANCE SHALL NOT BE MADE BY CHILDREN WITHOUT SUPERVISION.

PRECAUTIONS NOT TO DAMAGE THE APPLIANCE

- RAW PAN BOTTOMS OR DAMAGED SAUCEPANS (NOT ENAMELLED CAST IRON POTS,) MAY DAMAGE THE CERAMIC GLASS.
- SAND OR OTHER ABRASIVE MATERIALS MAY DAMAGE CERAMIC GLASS.
- AVOID DROPPING OBJECTS, EVEN LITTLE ONES, ON THE VITROCERAMIC.
- DO NOT HIT THE EDGES OF THE GLASS WITH SAUCEPANS.
- MAKE SURE THAT THE VENTILATION OF THE APPLIANCE WORKS ACCORDING TO THE MANUFACTURER'S INSTRUCTIONS.
- DO NOT PUT OR LEAVE EMPTY SAUCEPANS ON THE VITROCERAMIC HOBS.
- SUGAR, SYNTHETIC MATERIALS OR ALUMINIUM SHEETS MUST NOT CONTACT WITH THE HEATING ZONES. THESE MAY CAUSE BREAKS OR OTHER ALTERATIONS OF THE VITROCERAMIC GLASS BY COOLING: SWITCH ON THE APPLIANCE AND TAKE THEM IMMEDIATELY OUT OF THE HOT HEATING ZONE (BE CAREFUL: DO NOT BURN YOURSELF).

- **WARNING: DANGER OF FIRE: DO NOT STORE ITEMS ON THE COOKING SURFACE.**
- **NEVER PLACE ANY HOT CONTAINER OVER THE CONTROL PANEL.**
- **IF A DRAWER IS SITUATED UNDER THE EMBEDDED APPLIANCE, MAKE SURE THE SPACE BETWEEN THE CONTENT OF THE DRAWER AND THE INFERIOR PART OF THE APPLIANCE IS LARGE ENOUGH (2 CM). THIS IS ESSENTIAL TO GUARANTYA CORRECT VENTILATION.**
- **NEVER PUT ANY INFLAMMABLE OBJECT (EX. SPRAYS) INTO THE DRAWER SITUATED UNDER THE VITROCERAMIC HOB. THE EVENTUAL CUTLERY DRAWERS MUST BE RESISTANT TO HEAT.**

PRECAUTIONS IN CASE OF APPLIANCE FAILURE

- **IF A DEFECT IS NOTICED, SWITCH OFF THE APPLIANCE AND TURN OFF THE ELECTRICAL SUPPLYING.**
- **IF THE CERAMIC GLASS IS CRACKED OR FISSURED, YOU MUST UNPLUG THE APPLIANCE AND CONTACT THE AFTER SALES SERVICE.**
- **REPAIRING HAS TO BE DONE BY SPECIALISTS. DO NOT OPEN THE APPLIANCE BY YOURSELF.**
- **WARNING: IF THE SURFACE IS CRACKED, SWITCH OFF THE APPLIANCE TO AVOID THE POSSIBILITY OF ELECTRIC SHOCK. OTHER PROTECTIONS**

OTHER PROTECTIONS

- NOTE SURE THAT THE CONTAINER PAN IS ALWAYS CENTRED ON THE COOKING ZONE. THE BOTTOM OF THE PAN MUST HAVE TO COVER AS MUCH AS POSSIBLE THE COOKING ZONE.
- FOR THE USERS OF PACEMAKER, THE MAGNETIC FIELD COULD INFLUENCE ITS OPERATING. WE RECOMMEND GETTING INFORMATION TO THE RETAILER OR OF THE DOCTOR.
- DO NOT TO USE ALUMINIUM OR SYNTHETIC MATERIAL CONTAINERS: THEY COULD MELT ON STILL HOT COOKING ZONES.
- NEVER TRY TO EXTINGUISH A FIRE WITH WATER, BUT SWITCH OFF THE APPLIANCE AND THEN COVER FLAME E.G. WITH A LID OR A FIRE BLANKET.



THE USE OF EITHER POOR QUALITY POT OR ANY INDUCTION ADAPTOR PLATE FOR NON-MAGNETIC COOKWARE RESULTS IN A WARRANTY BREACH. IN THIS CASE, THE MANUFACTURER CANNOT BE HELD RESPONSIBLE FOR ANY DAMAGE CAUSED TO THE HOB AND/OR ITS ENVIRONMENT.

PART 2: DESCRIPTION OF THE APPLIANCE

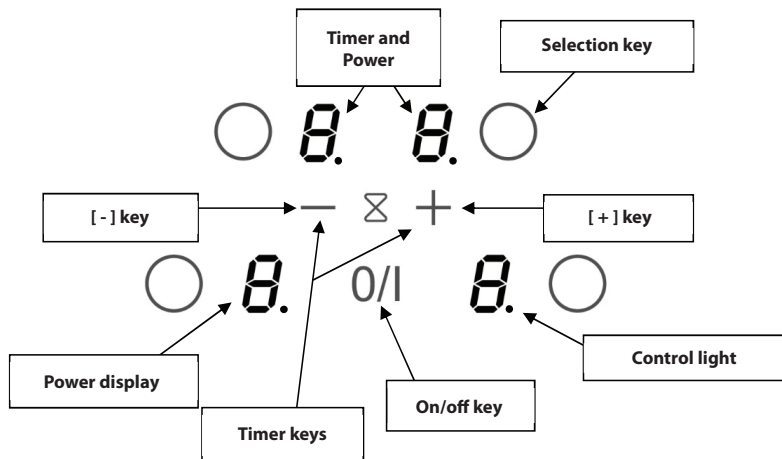
Technical characteristics

Type	PHD62B	PHD64B
Total power	6500 W	7400 W
Energy consumption for the hob EChob**	166.4 Wh/kg	170.6 Wh/kg
Front left heating zone		
Minimum detection	Ø 180 mm Ø 100 mm	Ø 180 mm Ø 100 mm
Nominal power*	1400 W	1400 W
Booster power*	1850 W	1850 W
Standardised cookware category**	B	B
Energy consumption EC _{cw} **	164 Wh/kg	164 Wh/kg
Rear left heating zone		
Minimum detection	Ø 180 mm Ø 100 mm	Ø 180 mm Ø 100 mm
Nominal power*	1400 W	1400 W
Booster power*	-	1850 W
Standardised cookware category**	B	B
Energy consumption EC _{cw} **	160 Wh/kg	164 Wh/kg
Rear right heating zone		
Minimum detection	Ø 180 mm Ø 100 mm	Ø 180 mm Ø 100 mm
Nominal power*	1400 W	1400 W
Booster power*	1850 W	1850 W
Standardised cookware category**	C	C
Energy consumption EC _{cw} **	172.7 Wh/kg	172.7 Wh/kg
Front right heating zone		
Minimum detection	Ø 180 mm Ø 100 mm	Ø 180 mm Ø 100 mm
Nominal power*	1400 W	1400 W
Booster power*	-	1850 W
Standardised cookware category**	A	A
Energy consumption EC _{cw} **	168.9 Wh/kg	181.6 Wh/kg

* The given power may change according to the dimensions and material of the pan.

** Calculated according to the method of measuring performance (EN 60350-2).

Control panel



PART 3: USE OF THE APPLIANCE

Display

Display	Designation	Function
0	Zero	The heating zone is activated.
1...9	Power level	Selection of the cooking level.
U	Pan detection	No pan or inadequate pan.
E	Error message	Electronic failure.
H	Residual heat	The heating zone is hot.
P	Booster	The boosted power is activated.
L	Locking	Control panel locking.

Ventilation

The cooling system operates continuously. He starts when turning on the hob and speeds up when the hob is used intensively. The cooling fan reduces its speed and stops automatically when the electronic circuit is cooled enough.

PART 4: STARTING-UP AND APPLIANCE MANAGEMENT

Before the first use

Clean your hob with a damp cloth, and then dry the surface thoroughly. Do not use detergent which risks causing blue-tinted colour on the glass surface.

Induction principle

An induction coil is located under each heating zone. When it is engaged, it produces a variable electromagnetic field which produces inductive currents in the ferromagnetic bottom plate of the pan. The result is a heating-up of the pan located on the heating zone.

Of course the pan has to be adapted:

- All ferromagnetic pans are recommended (please verify it thanks a little magnet): cast iron and steel pans, enamelled pans, stainless-steel pans with ferromagnetic bottoms...
- Are excluded: copper, pure stainless-steel, aluminium, glass, wood, ceramic, stoneware,...

The induction heating zone adapts automatically the size of the pan. With a too small diameter the pan doesn't work. This diameter is varying in function of the heating zone diameter.

If the pan is not adapted to the induction hob the display will show [U].

Sensitive touch

Your ceramic hob is equipped with electronic controls with sensitive touch keys. When your finger presses the key, the corresponding command is activated. This activation is validated by a control light, a letter or a number in the display and/or a "beep" sound.

In the case of a general use press only one key at the same time.

Starting-up

You must first switching on the hob, then the heating zone:

• Start-up/ switch off the hob:

Action	Control panel	Display
To start	Press key [0/I]	[0]
Touch the key	Press key [0/I]	Nothing or [H]

• Start-up/ switch off a heating zone:

Action	Control panel	Display
Zone selection	Press selection key from the zone	[0]
Increase power	Press key [+]	[1] to [9]
Decrease power	Press key [-]	[9] to [1]
Stop	Press key [-] or Press simultaneously [O] and [-]	[0] or [H]

If no action is made within 20 second the electronics returns in waiting position.

Pan detection

The pan detection ensures a perfect safety. The induction doesn't work:

- If there is no pan on the heating zone or if this pan is not adapted to the induction. In this case it is impossible to increase the power and the display shows [U]. This symbol disappears when a pan is put on the heating zone.
- If the pan is removed from the heating zone the operation is stopped. The display shows [U]. The symbol [U] disappears when the pan is put back to the heating zone. The cooking continues with the power level set before.

After use, switch the heat element off: don't let the pan detection [U] active.

Residual heat indication

After the switch off of a heating zone or the complete stop of the hob, the heating zones are still hot and indicates [H] on the display.

The symbol [H] disappears when the heating zones may be touched without danger.

As far as the residual heat indicators are on light, don't touch the heating zones and don't put any heat sensitive object on them. **There are risks of burn and fire.**

Booster function

The booster function [P] grants a boost of power to the selected heating zone.

If this function is activated the heating zones works during 5 minutes with an ultra high power.

The booster is foreseen for example to heat up rapidly big quantities of water, like nuddles cooking.

- **Start up / Stop the booster function:**

Action	Control panel	Display
Zone selection	Press selection key from the zone	[0]
Increase power	Press key [+]	[1] to [9]
Start up the booster	Press key [+]	[P] during 5 min
Stop the booster	Press key [-]	[9]

- **Power management :**

The hole cooking hob is equipped by a maximum of power. When the booster function is activated, and not to exceed the maximum power, the electronic system orders to reduce automatically the power level of an other heating zone. The display is blinking on [9] during a few seconds and then shows the maximum of power allowed ([6] or [8]).

Heating zone selected	The other heating zone: (example: power level 9)
[P] is displayed	[9] goes to [7] depending the type of zone

Timer

The timer is able to be used simultaneous with all heating zones and this with different time settings (from 0 to 99 minutes) for each heating zone.

- **Setting and modification of the cooking time:**

<u>Action</u>	<u>Control panel</u>	<u>Display</u>
Zone selection	Press selection key from the zone	[0]
Increase power	Press key [+]	[1] to [9]
To select « Timer »	Press simultaneously [-] and [+]	Timer [00] min
Decrease the time	Press key [-]	[00] goes to 30, 29...
Increase the time	Press key [+]	time increase

After a few seconds the control light stops with blinking.

The time is confirmed and the cooking starts until the time reaches [00].

- **To stop the cooking time:**

<u>Action</u>	<u>Control panel</u>	<u>Display</u>
Zone selection	Press selection key from the zone	[0]
To select « Timer »	Press simultaneously [-] and [+]	The remaining time
To stop the « Timer »	Press key [-]	[00] then stops

If several timers are activated repeat the process.

- **Automatic stop at the end of the cooking time:**

As soon as the selected cooking time is finished the timer displays blinking [00] and a sound rings.

To stop the sound and the blinking it is enough to press any key.

- **Egg timer function:**

<u>Action</u>	<u>Control panel</u>	<u>Display</u>
Activate the hob	Press key [0/I]	[0] or [H]
Select« Timer »	Press simultaneously [-] and [+]	Timer [00] min
Decrease the time	Press key [-]	[00] goes to 30, 29....
Increase the time	Press key [+]	time increase

After a few seconds the control light stops with blinking.

As soon as the selected cooking time is finished the timer displays blinking [00] and a sound rings.

To stop the sound and the blinking it is enough to press any key.

Control panel locking

To avoid modifying a setting of cooking zones , in particular with within the framework of cleaning the control panel can be locked (with exception to the On/Off key [0/I]).

- **Locking:**

Action	Control panel	Display
Start	Press key [0/I]	[0] or [H]
Hob locking	Press simultaneously [-] and [O]	No modification
	Repress selection key from the front right zone	[L]

- **Unlocking:**

Action	Control panel	Display
Start	Press key [0/I]	[L]
In the 5 seconds after start:		
Unlocking the hob	Press simultaneously [-] and selection key from the front right zone	[0]
	Repress key [-]	No light on the displays

PART 5: COOKING ADVICES

Pan quality

Adapted materials:

steel, enamelled steel, cast iron, ferromagnetic stainless-steel, aluminium with ferromagnetic bottom.

Not adapted materials:

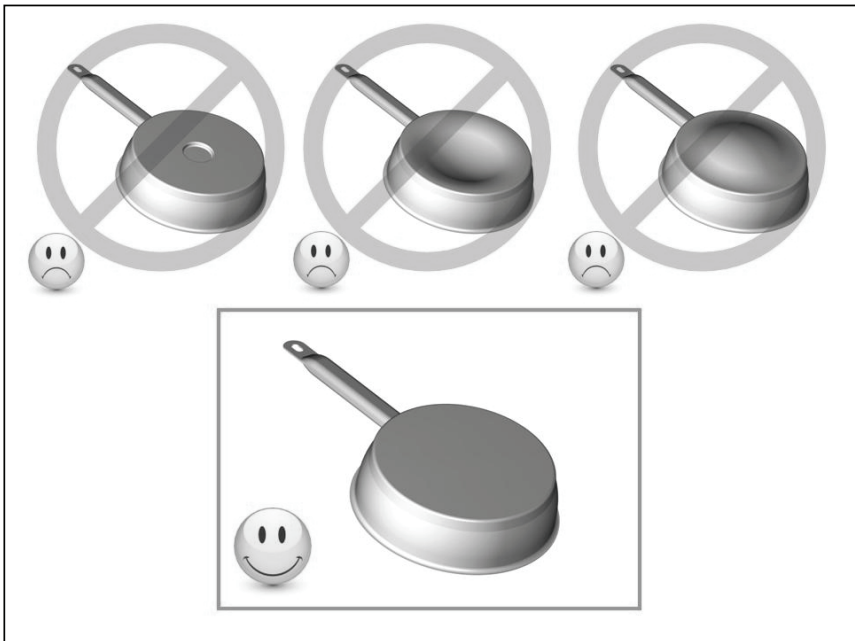
aluminium and stainless-steel without ferromagnetic bottom, copper, brass, glass, ceramic, porcelain.

The manufacturers specify if their products are compatible induction.

To check if pans are compatibles :

- Put a little water in a pan placed on an induction heating zone set at level [9]. This water must heat in a few seconds.
- A magnet sticks on the bottom of the pan.

Certain pans can make noise when they are placed on an induction cooking zone. This noise doesn't mean any failure on the appliance and doesn't influence the cooking operating.



Pan dimension

The cooking zones are, until a certain limit, automatically adapted to the diameter of the pan.

However the bottom of this pan must have a minimum of diameter according to the corresponding cooking zone.

To obtain the best efficiency of your hob, please place the pan well in the centre of the cooking zone.

Examples of cooking power setting

(the values below are indicative)

1 to 2	Melting Reheating	Sauces, butter, chocolate, gelatine Dishes prepared beforehand
2 to 3	Simmering Defrosting	Rice, pudding, sugar syrup Dried vegetables, fish, frozen products
3 to 4	Steam	Vegetables, fish, meat
4 to 5	Water	Steamed potatoes, soups, pasta, fresh vegetables
6 to 7	Medium cooking Simmering	Meat, liver, eggs, sausages Goulash, roulade, tripe
7 to 8	Cooking	Potatoes, fritters, wafers
9	Frying, roasting, boiling water	Steaks, omelettes, fried dishes, water
P	Frying, roasting Boiling water	Scallops, steaks Boiling significant quantities of water

PART 6: MAINTENANCE AND CLEANING

Switch-off the appliance before cleaning.

Do not clean the hob if the glass is too hot because they are risk of burn.

- Remove light marks with a damp cloth with washing up liquid diluted in a little water. Then rinse with cold water and dry the surface thoroughly.
- Highly corrosive or abrasive detergents and cleaning equipment likely to cause scratches must be absolutely avoided.
- Do not ever use any steam-driven or pressure appliance.
- Do not use any object that may scratch the ceramic glass.
- Ensure that the pan is dry and clean. Ensure that there are no grains of dust on your ceramic hob or on the pan. Sliding rough saucepans will scratch the surface.
- Spillages of sugar, jam, jelly, etc. must be removed immediately. You will thus prevent the surface being damaged.

PART 7: WHAT TO DO IN CASE OF A PROBLEM

The hob or the cooking zone doesn't start-up:

- The hob is badly connected to the electrical network.
- The protection fuse cut-off.
- The locking function is activated.
- The sensitive keys are covered with grease or water.
- An object is put on a key.

The control panel displays [U]:

- There is no pan on the cooking zone.
- The pan is not compatible with induction.
- The bottom diameter of the pan is too small.

Continuous ventilation after cutting off the hob:

- This is not a failure, the fan continuous to protect the electronic device.
- The fan cooling stops automatically.

One or all cooking zone cut-off:

- The safety system functioned.
- You forgot to cut-off the cooking zone for a long time.
- One or more sensitive keys are covered.
- The pan is empty and its bottom overheated.
- The hob also has an automatic reduction of power level and breaking Automatic overheating

The control panel displays [L]:

- Refer to the chapter control panel locking page.

The control panel displays [Er03]:

- An object or liquid covers the control keys. The symbol disappear as soon as the key is released or cleaned.

The control panel displays [E2] or [EH]:

- The hob is overheated, let it cool and then turn it on again.

The control panel displays [E3]:

- The pan is not adapted, change the pan.

The control panel displays [E5]:

- Defective network. Control the voltage of the electrical network.

The control panel displays [E6]:

- Defective network. Control the frequency of the electrical network.

The control panel displays [E8]:

- The air inlet of the ventilator is obstructed, release it.

The control panel displays [U400]:

- The hob is not connected to the network. Check the connection and reconnect the hob.

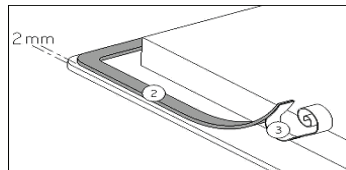
If one of the symbols above persists, call the SAV.

PART 8: INSTALLATION INSTRUCTIONS

The installation comes under the exclusive responsibility of specialists.
The installer is held to respect the legislation and the standards enforce in his home country.

How to stick the gasket:

The gasket supplied with the hob avoids all infiltration of liquids in the cabinet.
His installation has to be done carefully, in conformity of the following drawing.



Stick the gasket (2) two millimeters from the external edge of the glass, after removing the protection sheet (3).

Fitting - installing:

- The cut out sizes are:

Reference	Cut-size
PHD 64B / PHD 62B	560 x 490 mm

- Ensure that there is a distance of 50 mm between the hob and the wall or sides.
- The hobs are classified as "Y" class for heat protection. Ideally the hob should be installed with plenty of space on either side. There may be a wall at the rear and tall units or a wall at one side. On the other side, however, no unit or divider must stand higher than the hob.
- The piece of furniture or the support in which the hob is to be fitted, as well as the edges of furniture, the laminate coatings and the glue used to fix them, must be able to resist temperatures of up to 100 °C.
- The mural rods of edge must be heat-resisting.
- Not to install the hob to the top of a not ventilated oven or a dishwasher.
- To guarantee under the bottom of the hob casing a space of 20 mm to ensure a good air circulation of the electronic device.
- If a drawer is placed under the work, avoid to put into this drawer flammable objects (for example: sprays) or not heat-resistant objects.
- Materials which are often used to make worktops expand on contact with water. To protect the cut out edge, apply a coat of varnish or special sealant. Particular care must be given to applying the adhesive joint supplied with the hob to prevent any leakage into the supporting furniture.
- This gasket guaranties a correct seal when used in conjunction with smooth work top surfaces.
- The safety gap between the hob and the cooker hood placed above must respect the indications of the hood manufacturer. In case of absence of instructions respect a distance minimum of 760 mm.
- The connection cord should be subjected, after building, with no mechanical constraint, such for example of the fact of the drawer.
- **WARNING:** Use only hob guards designed by the manufacturer of the cooking appliance or indicated by the manufacturer of the appliance in the instructions for use as suitable or hob guards incorporated in the appliance. The use of inappropriate guards can cause accidents.

PART 9: ELECTRICAL CONNECTION

- The installation of this appliance and the connection to the electrical network should be entrusted only to an electrician perfectly to the fact of the normative regulations and which respects them scrupulously.
- Protection against the parts under tension must be ensured after the building-in.
- The data of connection necessary are on the stickers place on the hob casing near the connection box.
- The connection to the main must be made using an earthed plug or via an omnipolar circuit breaking device with a contact opening of at least 3 mm.
- The electrical circuit must be separated from the network by adapted devices, for example: circuit breakers, fuses or contactors.
- If the appliance is not fitted with an accessible plug, disconnecting means must be incorporated in the fixed installation, in accordance with the installation regulations.
- The inlet hose must be positioned so that it does not touch any of the hot parts of the hob or even.

Caution!

This appliance has only to be connected to a network 230 V~ 50/60 Hz.

Connect always the earth wire.

Respect the connection diagram.

The connection box is located underneath at the back of the hob casing. To open the cover use a medium screwdriver. Place it in the slits and open the cover.

Mains	Connection	Cable diameter	Cable	Protection calibre
230V~ 50/60Hz	1 Phase + N	3 x 2,5 mm ²	H 05 VV - F H 05 RR - F	25 A *
400V~ 50/60Hz	2 Phases + N	4 x 1.5 mm ²	H 05 VV - F H 05 RR - F	16 A *

* Calculated with the simultaneous factor following the standard EN 60 335-2-6/1990.

Connection of the hob

Setting up the configurations:

For the various kinds of connection, use the brass bridges which are in the box next the terminal

Monophase 230V~1P+N

Put a bridge between terminals L1 and L2 and between terminals N1 and N2.

Attach the earth to the terminal "earth", the neutral N to one of the terminals N1 or N2, the Phase L to one of the terminals L1 or L2.

Biphase 400V~2P+N

Put a bridge between terminal N1 and N2.

Attach the earth to the terminal "earth", the neutral N to terminals N1 or N2, the Phase L1 to the terminals L1 and the Phase L2 to the terminal L2.

We cannot be held responsible for any incident resulting from incorrect connection or which could arise from the use of an appliance which has not been earthed or has been equipped with a faulty earth connection.

INSTRUCTIONS AND INFORMATION REGARDING THE DISPOSAL OF USED PACKAGING MATERIALS

Dispose of packaging material at a public waste disposal site.

DISPOSAL OF USED ELECTRICAL AND ELECTRONIC APPLIANCES



The meaning of the symbol on the product, its accessory or packaging indicates that this product shall not be treated as household waste. Please, dispose of this product at your applicable collection point for the recycling of electrical & electronic equipment waste. Alternatively in some states of the European Union or other European states you may return your products to your local retailer when buying an equivalent new product. The correct disposal of this product will help save valuable natural resources and help in preventing the potential negative impact on the environment and human health, which could be caused as a result of improper liquidation of waste. Please ask your local authorities or the nearest waste collection centre for further details. The improper disposal of this type of waste may fall subject to national regulations for fines.

For business entities in the European Union

If you wish to dispose of an electrical or electronic device, request the necessary information from your seller or supplier.

Disposal in other countries outside the European Union

If you wish to dispose of this product, request the necessary information about the correct disposal method from local government departments or from your seller.



This product meets all the basic EU regulation requirements that relate to it.

Changes to the text, design and technical specifications may occur without prior notice and we reserve the right to make these changes.

Manufacturer/Importer:
Fast ČR, a.s.
Praha 10, Černokostecká 2111
CZ-10000; CZECH REPUBLIC

PHILCO[®] 

**is a registered trademark used under license from
Electrolux Home Products., Inc.**