

Wash Machine

OWNER'S MANUAL

PHILCO



Famous for Quality the World Over

PLDI 147 B King
PLDI 148 B King
PLDSI 148 B King

PLDI 149 B King
PLDI 1510 B King

Dear customer,
Thank you for buying a PHILCO brand product. So that your appliance serves you well, please read all the instructions in this user's manual.

CONTENTS

- SAFETY INSTRUCTIONS2**
- INSTALLATION.....7**
 - PRODUCT DESCRIPTION7
- OPERATIONS.....12**
 - QUICK START12
 - BEFORE EACH WASHING13
 - DETERGENT DISPENSER14
 - CONTROL PANEL15
 - OPTION.....16
 - OTHER FUNCTIONS18
 - PROGRAMMES.....20
 - WASHING PROGRAMMES TABLE.....21
- MAINTENANCE22**
 - CLEANING AND CARE.....22
 - CLEANING THE INLET FILTER23
 - CLEANING THE DRAIN PUMP FILTER.....24
 - TROUBLE SHOOTING25
 - TECHNICAL SPECIFICATIONS26
- PRODUCT INFORMATION SHEET27**

SAFETY INSTRUCTIONS

THIS APPLIANCE CAN BE USED BY CHILDREN AGED FROM 8 YEARS AND ABOVE AND BY PERSONS WITH REDUCED PHYSICAL, SENSORY OR MENTAL CAPABILITIES OR LACK OF EXPERIENCE AND KNOWLEDGE IF THEY HAVE BEEN GIVEN SUPERVISION OR INSTRUCTIONS CONCERNING USE OF THE APPLIANCE IN A SAFE WAY AND IF THEY UNDERSTAND THE HAZARDS INVOLVED.

CHILDREN MUST NOT PLAY WITH THE APPLIANCE.

CHILDREN YOUNGER THAN 3 YEARS OF AGE SHOULD BE PREVENTED FROM ACCESSING UNLESS THEY ARE UNDER PERMANENT SUPERVISION.

CLEANING AND USER MAINTENANCE CANNOT BE PERFORMED BY CHILDREN WITHOUT SUPERVISION.

IF THE SUPPLY CABLE GETS DAMAGED, HAVE IT REPLACED BY A SPECIALIZED SERVICE CENTRE IN ORDER TO AVOID DANGEROUS SITUATIONS. IT IS PROHIBITED TO USE AN APPLIANCE WITH THE SUPPLY CABLE DAMAGED.

FOR INFORMATION ON THE MAXIMUM DRY WEIGHT FOR WHICH THE APPLIANCE CAN BE USED, SEE PAGE 26 IN THE TECHNICAL DATA SECTION.

THE VENTILATION OPENINGS AT THE BOTTOM MUST NOT BE COVERED WITH CARPET.

THIS APPLIANCE IS INTENDED TO BE USED ONLY IN HOUSEHOLDS AND NOT IN SIMILAR PREMISES, SUCH AS:

- KITCHENETTES IN SHOPS, OFFICES AND OTHER WORKPLACES;
- AGRICULTURAL FACILITIES;
- HOTELS, MOTELS, AND OTHER ACCOMMODATION FACILITIES WHERE APPLIANCES ARE USED BY GUESTS;
- BED AND BREAKFAST FACILITIES;
- IN COMMON USE FACILITIES IN BLOCKS OF FLATS.

ADDITIONAL INFORMATION

THIS APPLIANCE IS INTENDED FOR WASHING FABRICS FOR WHICH THE MANUFACTURER HAS RECOMMENDED SUCH TREATMENT.

ALWAYS USE PROGRAMMES ACCORDING TO THE FABRIC TYPE.

THE WASHING MACHINE COULD GET DAMAGED WHEN WASHING SHOES.

DO NOT USE TO WASH CARPETS.

USE ONLY DETERGENTS THAT ARE INTENDED FOR WASHING CLOTHES IN AN AUTOMATIC DRUM WASHING MACHINE.

SOFTENERS AND SIMILAR PRODUCTS SHOULD ALWAYS BE USED IN ACCORDANCE WITH THEIR INSTRUCTION FOR USE.

- IF THE SUPPLY CORD GETS DAMAGED, IT MUST BE REPLACED BY THE MANUFACTURER, ITS SERVICE AGENT OR A SIMILARLY QUALIFIED PERSON.
- THE APPLIANCE SHOULD BE CONNECTED TO THE WATER SUPPLY AND DRAIN USING NEW HOSES, NOT USING HOSES THAT HAVE ALREADY BEEN USED.
- ALWAYS DISCONNECT THE APPLIANCE FROM THE MAINS BEFORE PERFORMING ANY MAINTENANCE.
- THE POWER CORD PLUG MUST BE CONNECTED TO A GROUNDED THREE-POLE ELECTRIC OUTLET.
- NEVER USE A POWER OUTLET WITH A RATED VOLTAGE THAT IS DIFFERENT FROM THE APPLIANCE'S VOLTAGE.
- DO NOT USE EXTENSION CORD TO CONNECT THE MACHINE TO THE POWER OUTLET.
- THE APPLIANCE, THE POWER CORD OR THE ELECTRIC OUTLET MUST NOT LIE IN, TOUCH OR BE SUBMERGED IN WATER OR ANY OTHER LIQUID TO AVOID ELECTRICAL HAZARDS.
- THE APPLIANCE MUST NOT STAND ON THE POWER CORD.
- THE POWER CORD MUST NOT BE EXCESSIVELY OR DANGEROUSLY BENT OR COMPRESSED DURING INSTALLATION OR OPERATION.
- THE CONTROLS AND DOOR OF THE APPLIANCE ARE NOT TO BE PLAYED WITH.
- THE GLASS DOOR OF THE APPLIANCE CAN GET HOT DURING OPERATION.

APPLIANCE INSTALLATION

- THIS APPLIANCE IS INTENDED FOR INTERIOR USE ONLY.
- THIS APPLIANCE IS INTENDED TO BE BUILT-IN.
- THE ELECTRIC OUTLET THAT THE POWER CORD IS CONNECTED TO MUST BE EASILY ACCESSIBLE AFTER THE APPLIANCE HAS BEEN INSTALLED.
- REMOVE ALL PACKAGING MATERIALS AND SAFETY TRANSPORT BOLTS BEFORE USING THE APPLIANCE. OTHERWISE THE APPLIANCE OR ITS SURROUNDINGS MIGHT GET SERIOUSLY DAMAGED.
- THE APPLIANCE, THE POWER CORD OR THE ELECTRIC OUTLET MUST NOT LIE IN, TOUCH OR BE SUBMERGED IN WATER OR ANY OTHER LIQUID TO AVOID ELECTRICAL HAZARDS.
- THE PACKAGING MATERIALS MUST BE DISPOSED OF IN A PROPER MANNER.
- DO NOT LIFT OR HANDLE THE APPLIANCE WHEN HOLDING ITS DOOR, CONTROLS, THE UPPER BOARD, HOSES OR POWER CORD.
- THE APPLIANCE MUST BE INSTALLED ONTO A FIRM AND EVEN SURFACE.
- AFTER YOU PLACE THE APPLIANCE, MAKE SURE IT IS LEVEL IN ALL DIRECTIONS USING A SPIRIT LEVEL.

**PLEASE READ THOSE SAFETY PRECAUTIONS CAREFULLY AND
STORE THEM FOR FUTURE REFERENCE.**

■ Safety Instructions

For your safety, the information in this manual must be followed to minimize the risk of fire or explosion, electric shock, or to prevent property damage, personal injury or loss of life.

Explanation of the symbols:

Warning!

This combination of symbol and signal word indicates a potentially dangerous situation which may result in death or serious injuries unless it's avoided.

Caution!

This combination of symbol and signal word indicates a potentially dangerous situation which may result in slight or minor injuries or damage to property and the environment.

Note!

This combination of symbol and signal word indicates a potentially dangerous situation which may result in slight or minor injuries.

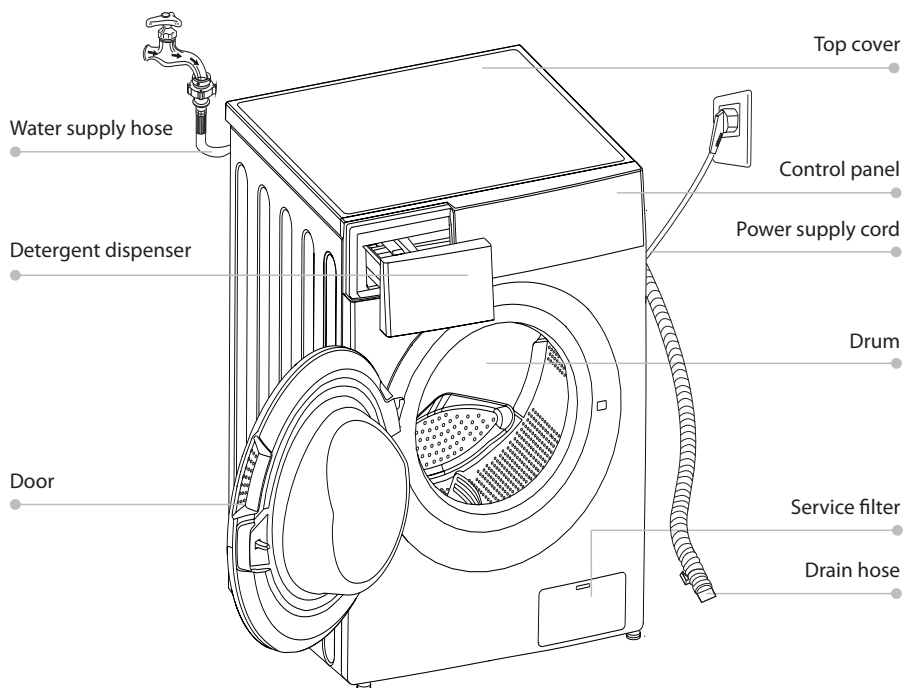
Packaging/Old appliance



This marking indicates that this product should not be disposed with other household wastes throughout the EU. To prevent possible harm to the environment or human health from uncontrolled waste disposal, recycle it responsibly to promote the sustainable reuse of material resources. To return your used device, please use the collection systems or contact the retailer where the product was purchased. They return and can take this product for environmental safe recycling.

INSTALLATION

■ Product Description



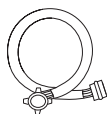
Note!

- The product line chart is for reference only, please refer to real product as standard.

Accessories



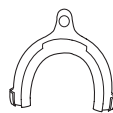
Transport hole
plug



Supply hose cold
water



Supply hose hot
water (optional)



Drain hose
support
(optional)



Owner's manual

■ Installation

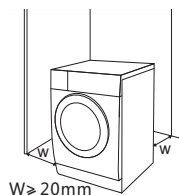
Installation area

Warning!

- Stability is important to prevent the product from wandering!
- Make sure that the product should not stand on the power cord.

Before installing the machine, the location characterized follows shall be selected:

1. Rigid, dry, and level surface
2. Avoid direct sunlight
3. Sufficient ventilation
4. Room temperature is above 0 °C
5. Keep far away from the heat resources such as coal or gas.

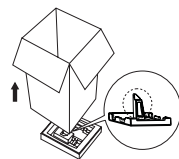


Unpacking the washing machine

Warning!

- Packaging material (e.g. Films, Styrofoam) can be dangerous for children.
- There is a risk of suffocation ! Keep all packaging well away from children.

1. Remove the cardboard box and styrofoam packing.
2. Lift the washer dryer and remove the base packing. Make sure the small triangle foam is removed with the bottom one together. If not, lay the unit down with side surface, then remove the small foam from the unit bottom manually.
3. Remove the tape securing the power supply cord and drain hose.
4. Remove the inlet hose from the drum.



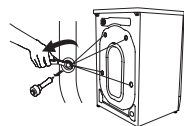
Remove transport bolts

Warning!

- You must remove the transport bolts from the backside before using the product.
- You'll need the transport bolts again if you move the product, so make sure you keep them in a safe place.

Please take the following steps to remove the bolts:

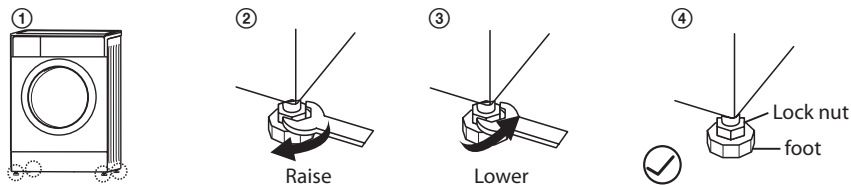
1. Loosen 4 bolts with spanner and then remove them.
2. Stop the holes with transport hole plugs.
3. Keep the transport bolts properly for future use.



Levelling the washer dryer

Warning!

- The lock nuts on all four feet must be screwed tightly against the housing.
1. Check if the legs are closely attached to the cabinet. If not, please turn them to their original positions tighten the nuts.
 2. Loosen the lock nut turn the feet until it closely contacts with the floor.
 3. Adjust the legs and lock them with a spanner, make sure the machine is steady.



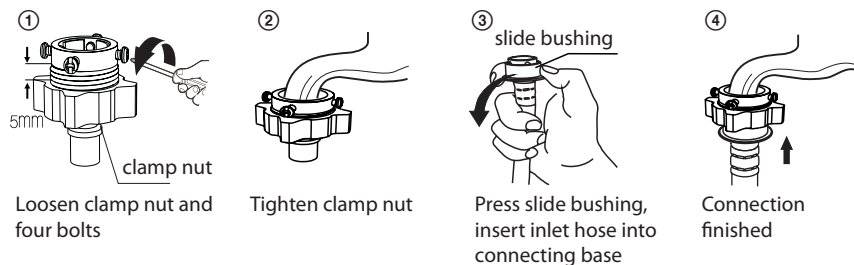
Connect Water Supply Hose

Warning!

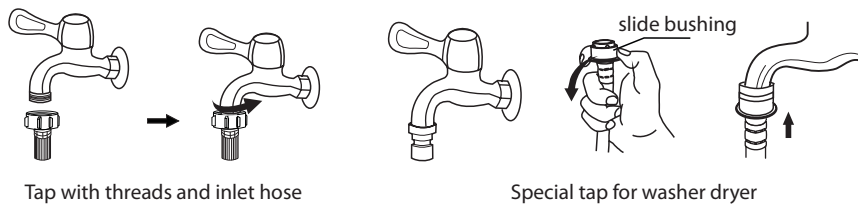
- To prevent leakage or water damage, follow the instructions in this chapter !
- Do not kink, crush, modify or sever water inlet hose.
- For the model equips hot valve, connect it to hot water tap with hot water supply hose. Energy consumption will decrease automatically for some program.

Connect the inlet pipe as indicated, There are two ways to connect the inlet pipe.

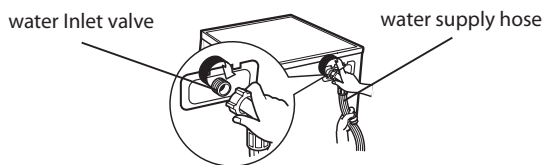
1. Connection between ordinary tap and inlet hose.



2. Connection between screw tap and inlet hose.



Connect the other end of inlet pipe to the inlet valve at the backside of product and fasten the pipe tightly clockwise.



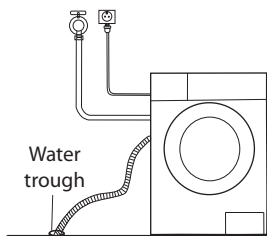
Drain Hose

Warning!

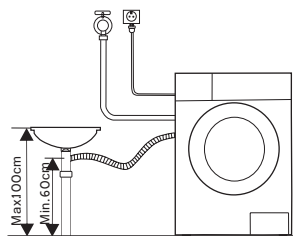
- Do not kink or protract the drain hose.
- Position drain hose properly ,otherwise damage might result of water leakage.

There are two ways to place the end of drain hose:

1. Put it into the water trough.

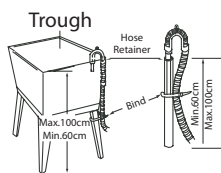
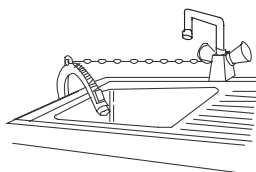


2. Connect it to the branch drain pipe of the trough.



Note!

- If the machine has drain hose support, please install it like the following .



Warning!

- When installing drain hose, fix it properly with a rope.
- If drain hose is too long, do not force it into washing machine as it will cause abnormal noises.

OPERATIONS

■ Quick Start

⚠ Caution!

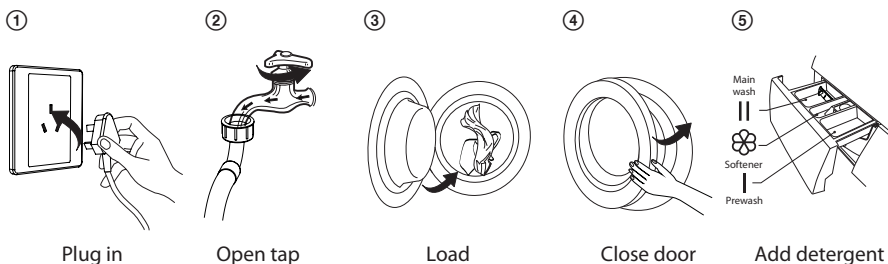
- Before washing, please make sure it's installed properly.
- Before washing at first time, the washing machine shall be operated in one round of the whole procedures without clothes in as follows.

📌 Calibration

It's recommend to calibrate the wash machine so that can serve you better.

- 1 Empty the wash machine;
- 2 Plug in;
- 3 Power on the wash machine and press "Temp." and "Soil" at the same time within 10 seconds then display "t19"(Washing only)
- 4 Press ▶▶ to start the wash machine and wait till display "*****"

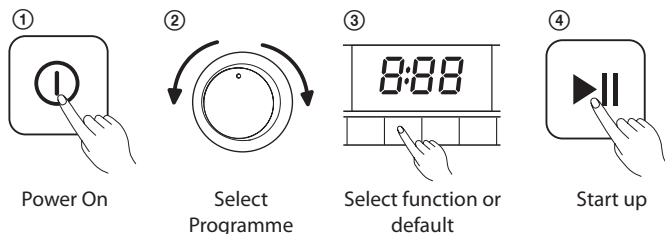
1. Before Washing



📌 Note!

- After prewash is selected in appliances equipped with this function, detergent must be added to the "I" drawer.

2. Washing





Note!

- If default is selected, step 3 can be skipped.
- The function button line chart is for reference only, please refer to real product as standard.

3. After Washing

Buzzer beep or "End" on display.

■ Before Each Washing

- The working condition of the washer should be (0-40) °C. If used under 0 °C, the inlet valve and draining system may be damaged. If the machine is placed under condition of 0 °C or less, then it should be transferred to normal ambient temperature to ensure the water supply hose and drain hose are not frozen before use.
- Please check the labels and the explanation of using detergent before wash. Use non-foaming or less-foaming detergent suitable for machine washing properly.



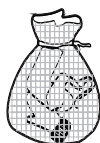
Check the label



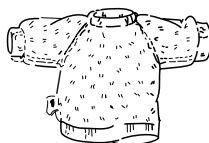
Take out the items out of the pockets



Knot the long strips, zip or button



Put small clothes into the pillow slip



Turn easy-pilling and long-pile fabric inside out



Separate clothes with different textures

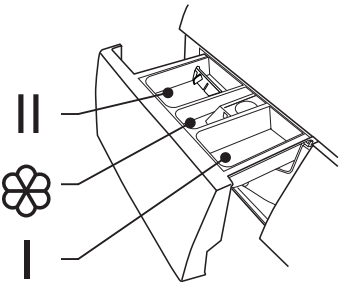


Warning!

- When washing a single piece of clothing the drum might be insufficiently balanced which might trigger a warning signal and the washing machine might stop working. In this case add other pieces of clothing that can be washed together to make the load in the drum sufficient and to ensure its correct balance.

Detergent Dispenser

- I Pre wash detergent
- II Main wash detergent
- Softener



Pull out the dispenser



Caution!

- Detergent only need to be added in „case I“after selecting pre-washing for machines with this function.

Programme	I	II /	
Cotton	<input type="radio"/>	<input checked="" type="radio"/>	<input type="radio"/>
Synthetic	<input type="radio"/>	<input checked="" type="radio"/>	<input type="radio"/>
Mix	<input type="radio"/>	<input checked="" type="radio"/>	<input type="radio"/>
Bed Linen	<input type="radio"/>	<input checked="" type="radio"/>	<input type="radio"/>
Baby Care	<input type="radio"/>	<input checked="" type="radio"/>	<input type="radio"/>
20 °C		<input checked="" type="radio"/>	<input type="radio"/>
Drum Clean			
Spin Only			

Programme	I	II /	
Rinse & Spin			<input type="radio"/>
Wool		<input checked="" type="radio"/>	<input type="radio"/>
ECO 40-60		<input checked="" type="radio"/>	<input type="radio"/>
Intensive		<input checked="" type="radio"/>	<input type="radio"/>
Quick 15'		<input checked="" type="radio"/>	<input type="radio"/>

☒ Means must ☐ Means optional

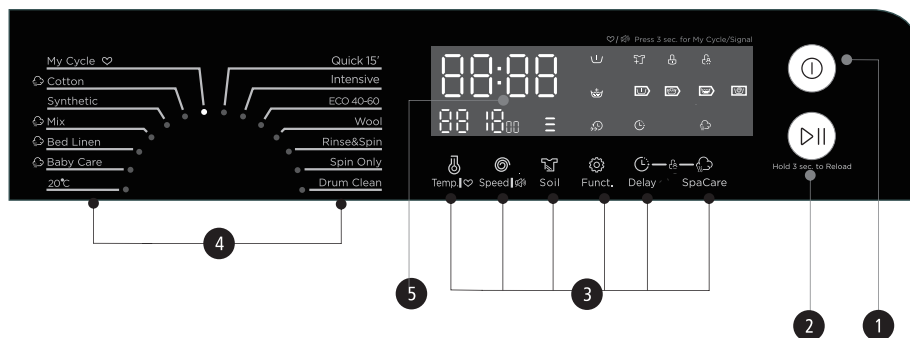


Note!

- If an extra thick detergent, additive or fabric conditioner is used, we suggest that you dilute it using a small amount of water before pouring it to the detergent or fabric conditioner drawer. This will prevent the drawer from overflowing during water pumping.
- Choose a suitable detergent type for different washing temperatures in order to achieve the best washing performance with lower water and energy consumption.

Control Panel

PLDI 147 B King, PLDI 148 B King, PLDI 149 B KING, PLDSI 148 B KING, PLDI 1510 B KING



Note!

- The chart is for reference only, Please refer to real product as standard.

1 On/Off

Product is switched on or off.

3 Option

This allows you to select an additional function and will light when selected.

5 Display

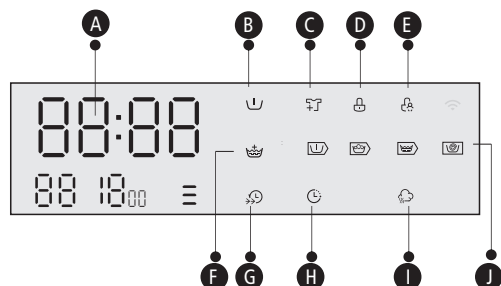
The display shows the settings, estimated time remaining, options, and status messages for your washer. The display will remain on through the cycle.

2 Start/Pause

Press the button to start or pause the washing cycle.

4 Programmes

Available according to the laundry type.



A Wash Time

1:25

Speed

400

End

End

Delay Time

2h

Error

E30

Temp.

30

B Pre Wash

C Reload

D Door Lock

E Child Lock

F Extra Rinse

G Speed Wash

H Delay

I SpaCare

J Pre Wash-Wash-Rinse-Spin

■ Option

Delay

Delay

Set the Delay function:

1. Select a programme.
2. Press the Delay button to choose the time (the delaying time is 0-24 H/3H-6H-9H).
3. Press [Start/Pause] to commence the delay operation.



Choose the Programme



Setting time



Start

Cancel the Delay function:

Press the [Delay] button until the display be 0H. It should be pressed before starting the programme. If the programme already started, should switch off programme to reset a new one.

Soil Level

Soil

The washing time will increase or decrease after you select it.



Caution!

- If there is any break in the power supply while the machine is operating, a special memory stores the selected programme and when the power is restarted, the program will continue.

Pre Wash

Pre Wash

The Prewash function can get an extra wash before main wash, it is suitable for washing the dust rises to surface of the clothes; You need to put detergent into the Case (I) when select it.

Extra Rinse

Extra Rinse

The laundry will undergo extra rinse once after you select it.

Speed wash

Speed Wash

The function can decrease the washing time.



My Cycle

To memory the frequently used programme.

After choosing the programme and setting the options, press [Temp.] 3 sec. before start to wash. The default setting course is Cotton.



Reload

This operation can be performed during washing.

The door cannot be opened by force that would be dangerous.

To add laundry during a programme, please do the following:

1. Press the [Start/Pause] button for 3 seconds.
2. Wait until the drum has stopped turning.
2. The door lock will unlock.
3. After you add the laundry, close the door and press the [Start/Pause] button.



Press[Start/Pause]3sec.



Reload the clothes



Start

SpaCare

SpaCare

SpaCare function can be selected by choose "Cotton","Mix","Bed Linen" and "Baby Care".

The customers can see the steam in the drum when operate SpaCare function. The SpaCare cannot be used simultaneously With Pre Wash and Speed Wash.



Caution!

- Don't use the Reload function when the water level over the edge of the inner tub or the temperature is higher.

■ Other functions

Temp.

Temp.
Press the button to regulate the temperature (Cold, 20 °C, 30 °C, 40 °C, 60 °C, 90 °C).

Speed

Speed
Press the button to change the speed.
1400: 0-400-600-800-1000-1200-1400
1500: 0-400-600-800-1000-1200-1400-1500

PLDI 147 B King, PLDI 148 B King, PLDI 149 B KING, PLDSI 148 B KING, PLDI 1510 B KING

Programme	Default Speed (rpm)	
	1400	1500
Cotton	1400	1500
Synthetic	1200	1200
Mix	800	800
Bed Linen	1000	1000
Baby Care	800	800
20 °C	1000	1000
Drum Clean	-	-

Programme	Default Speed (rpm)	
	1400	1500
Spin Only	1000	1000
Rinse&Spin	1000	1000
Wool	600	600
ECO 40-60	1400	1500
Intensive	800	800
Quick 15'	800	800



Child Lock

To avoid mis operation by children.

Delay

SpaCare

Press [Delay] and [SpaCare]
3 sec. till buzzer beep.



Caution!

When child lock is activated and program starts, child lock indicator will switch on, and the CL and remaining time on the display are alternately displayed in 0.5s. Press the other buttons will make child lock indicator flash for 3s. When program finish, CL and END alternate for 10s in 0.5s, then the child lock lights flash for 3s.

- Only press and hold the two button can release child lock, even power off, switch off and program end.
- The „Child Lock“ will lock all buttons except Power button and Child Lock button.
- Please release child lock before selecting program and staring washing.



Mute the buzzer



Choose the Programme



Press the [Speed] button for 3sec., the
buzzer is mute.

To act the buzzer function, press the button again for 3 seconds. The setting will be kept until the next reset.



Caution!

- After Muting the buzzer function, the sounds will not be activated any more.

■ Programmes

Programmes are available according to the laundry type. Detail info about your programmes depends on control panel . Please, check your model at chapter control panel.

Programmes	
Cotton	Hard-wearing textiles, heat-resistant textiles made of cotton or linen.
Synthetic	Wash synthetic articles, for example: shirts, coats, blending. While washing the knitting textiles, detergent quantity shall be reduced due to its loose string construction and easily forming bubbles.
Baby Care	Washing the baby's clothes, it can make the baby's wear cleaner and make the rinse performance better to protect the baby skin.
Mix	Mixed load consisting of textiles made of cotton and synthetics.
Bed Linen	This program is specially designed for washing duvet coats.
20 °C	20 °C default, can choose cold water.
ECO 40-60	Default 40 °C, not selectable, suitable for laundry washing at about 40 °C - 60 °C.
Quick 15'	
Quick 15'	Extra short programme approx, suitable for lightly soiled washing as a small amounts of laundry.
1h W/D	For small synthetic clothes or shirts, load limitation is 1 kg (about 4 shirts).
Wool	Hand or machine-washable wool or rich wool textiles. Especially gentle wash programme to prevent shrinkage, longer programme pauses (textiles rest in wash liquor).
Spin Only	Extra spin with selectable spin speed.
Rinse&Spin	Extra rinse with spin.
Intensive	To increase the washing effects, washing time is increased.
Drum Clean	Specially set in this machine to clean the drum and tube. It applies 90 °C high temperature sterilization to make the clothes washing more green. When this programme is performed, the clothes or other washing cannot be added. When proper amount of chlorine bleaching agent is put in, the barrel cleaning effect will be better. The customer can use this programme regularly according to the need.

■ Washing Programmes Table

PLDI 147 B King, PLDI 148 B King, PLDI 149 B KING, PLDSI 148 B KING, PLDI 1510 B KING

Programme	Dry laundry load (kg)				Temp. (°C)	Default Time
	7.0	8.0	9.0	10.0	Default	7.0/8.0/9.0/10.0
Cotton	7.0	8.0	9.0	10.0	40	3:39
Synthetic	3.5	4.0	4.5	5.0	40	3:18
Mix	7.0	8.0	9.0	10.0	40	1:20
Bed Linen	7.0	8.0	9.0	10.0	40	1:48
Baby Care	7.0	8.0	9.0	10.0	60	1:42
20 °C	7.0	8.0	9.0	10.0	20	1:01
Drum Clean	-	-	-	-	90	1:18
Spin Only	7.0	8.0	9.0	10.0	-	0:12
Rinse & Spin	7.0	8.0	9.0	10.0	-	0:20
Wool	2.0	2.0	2.0	2.0	40	1:07
ECO 40-60	7.0	8.0	9.0	10.0	-	3:13/3:32/3:41/ 3:35/3:53
Intensive	7.0	8.0	9.0	10.0	40	3:48
Quick 15'	2.0	2.0	2.0	2.0	Cold	0:15

- Energy test program: Intensive 60/40 °C; Speed: The highest speed;
Other as the default.
Half load for 7.0/8.0/9.0/10.0Kg machine: 3.5/4.0/4.5/5.0Kg.
- Concerning to (EU) 2019/2014
The EU energy efficiency class is: B
Energy test program: ECO 40-60.
Other as the default.
Half load for 7.0/8.0/9.0/10.0Kg machine: 3.5/4.0/4.5/5.0Kg.
Quarter load for 7.0/8.0/9.0/10.0Kg machine: 2.0/2.0/2.5/2.5Kg.

Note!

- The parameters in this table are only for user's reference. The actual parameters maybe different with the parameters in above mentioned table.

MAINTENANCE

■ Cleaning And Care

Warning!

- Before your maintenance starts, please unplug the machine and close the tap.

Cleaning The Cabinet

Proper maintenance on the washing machine can extend its working life. The surface can be cleaned with diluted non-abrasive neutral detergents when necessary. If there is any water overflow, use the wet cloth to wipe it off immediately. No sharp items are allowed.



Note!

- Formic acid and its diluted solvents or equivalent are forbidden, such as alcohol, solvents or chemical products, etc.

Cleaning The Drum

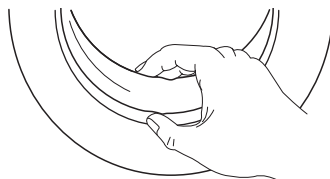
The rusts left inside the drum by the metal articles shall be removed immediately with chlorine-free detergents. Never use steel wool.

Note!

- Don't put laundry in the washing machine during the drum cleaning.

Cleaning The Door Seal And Glass

Wipe the glass and seal after each wash to remove lint and stains. If lint builds up it can cause leaks. Remove any coins, buttons and other objects from the seal after each wash.



■ Cleaning The Inlet Filter

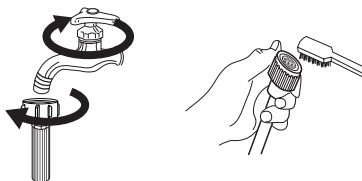


Note!

- Inlet filter must be cleaned if there is less water.

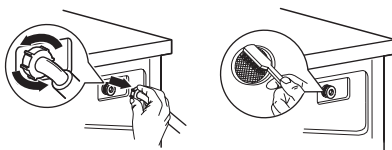
Washing the filter in the tap

1. Close the tap.
2. Remove the water supply hose from the tap.
3. Clean the filter.
4. Reconnect the water supply hose.



Washing the filter in washing machine:

1. Screw off the inlet pipe from the backside of the machine.
2. Pull out the filter with long nose pliers and reinstall it back after being washed.
3. Use the brush to clean the filter.
4. Reconnect the inlet pipe.

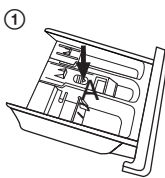


Note!

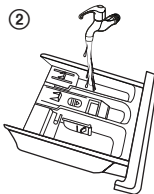
- If the brush is not clean, you can pull out the filter washed separately;
- Reconnect, turn on the tap.

Clean The Detergent Dispenser

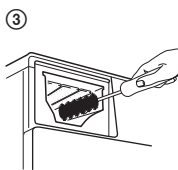
1. Press down the arrow location on softener cover inside the dispenser drawer.
2. Lift the clip up and take out softener cover and wash all grooves with water.
3. Restore the softener cover and push the drawer into position.



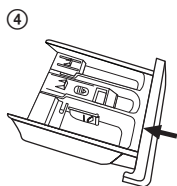
Pull out the dispenser drawer with press the A



Clean the dispenser drawer under water



Clean inside the recess with an old toothbrush



Insert the dispenser drawer



Note!

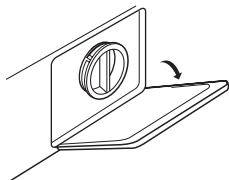
- Do not use alcohol, solvents or chemical products to clean the machine.

■ Cleaning The Drain Pump Filter

Warning!

- Be careful of the hot water!
- Allow detergent solution to cool down.
- Unplug the machine to avoid electrical shock before washing.
- Drain pump filter can filter the yarns and small foreign matters from the washing.
- Clean the filter periodically to ensure the normal operation of washing machine.

①



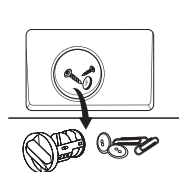
Open the lower cover cap

②



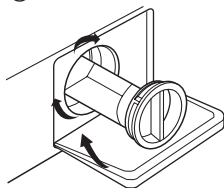
Open the filter by turning to the counter clockwise

③



Remove extraneous matter

④



Close the lower cover cap

Caution!

- Rotate lower cover cap directly to make water run into basin.
- When the appliance is in use and depending on the programme selected there can be hot water in the pump. Never remove the pump cover during a wash cycle, always wait until the appliance has finished the cycle, and is empty. When replacing the cover, ensure it is securely re-tightened.

■ Trouble Shooting

The start of the appliance does not work or it stops during operation.
First try to find a solution to the problem, If not, contact the service centre.

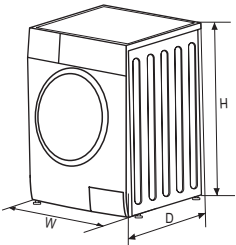
Description	Reason	Solution
Washer dryer cannot start up.	Door is not closed properly.	Restart after the door is closed. Check if the clothes is stuck.
Door can't be opened.	Washer's safety protection design is working.	Disconnect the power, restart the product.
Water leakage.	The connection between inlet pipe or outlet hose is not tight.	Check and fasten water pipes Clean up outlet hose.
Detergent residues in the box.	Detergent is dampened or agglomerated.	Clean and wipe the detergent box.
Indicator or display does not light	Disconnect the power PC board or harness has connection problem.	Check if the power is shut down and the power plug is connected correctly.
Abnormal noise.		Check if the fixing (bolts) have been removed. Check it's installed on a solid and level floor.
E30	Door is not closed properly.	Restart after the door is closed. Check if the clothes is stuck.
E10	Water injecting problem while washing.	Check if the water pressure is too low. Straighten the water pipe. Check if the inlet valve filter is blocked.
E21	Overtime water draining.	Check if the drain hose is blocked.
E12	Water overflow.	Restart the washer.
EXX	Others.	Please try again first, call up service line if there are still troubles.

Note!

- After the check, activate the appliance. If the problem occurs or the display shows other alarm codes again, contact the service.

■ Technical Specifications

Power Supply	220-240V~,50Hz
MAX. Current	10A
Standard Water Pressure	0.05MPa~1MPa



Model	Washing Capacity	Dimension (WxDxH)	Net Weight	Rated Power
PLDI 147 B King	7.0kg	595x495x850	61kg	2000W
PLDI 148 B King	8.0kg	595x565x850	68kg	2000W
PLDI 149 B KING	9.0kg	595x565x850	71kg	2000W
PLDSI 148 B KING	8.0kg	595x475x850	63kg	1950W
PLDI 1510 B KING	10.0kg	595x565x850	72kg	1950W

PRODUCT INFORMATION SHEET

Product Information Sheet

PHILCO 

COMMISSION DELEGATED REGULATION (EU) 2019/2016

Supplier's name or trademark: PHILCO

Supplier's address: U Sanitasu 1621, 251 01 Říčany, CZ

Model identifier: PLDI 147 B King

General product parameters: Washmachine

Parameter	Value		Parameter	Value	
Rated capacity (kg)	7.0		Dimensions in mm	Height	850
				Width	600
				Depth	500
EEL _w	59.9		Energy efficiency class*	B	
Washing efficiency index	1.031		Rinsing effectiveness (g/kg)	5.0	
Energy consumption in kWh per cycle, based on the eco 40-60 programme. Actual energy consumption will depend on how the appliance is used.	0.516		Water consumption in litre per cycle, based on the eco 40-60 programme. Actual water consumption will depend on how the appliance is used and on the hardness of the water.	45	
Maximum temperature inside the treated textile (°C)	Rated capacity	36	Remaining moisture content (%)	Rated capacity	53.9
	Half	34		Half	53.9
	Quarter	21		Quarter	53.9
Spin speed (rpm)	Rated capacity	1400	Spin-drying efficiency class	B	
	Half	1400			
	Quarter	1400			
Programme duration (h:min)	Rated capacity	3:28	Type	Free-standing	
	Half	2:42			
	Quarter	2:42			
Airborne acoustical noise emissions in the spinning phase (dB(A) re 1 pW)	76		Airborne acoustical noise emission class (spinning phase)	B	

Off-mode (W)	0.5	Standby mode (W)	N/A
Delay start (W) (if applicable)	4	Networked standby (W) (if applicable)	N/A
Minimum duration of the guarantee offered by the supplier: 24 months			
This product has been designed to release silver ions during the washing cycle		No	
Additional information:			
Weblink to the supplier's website, where the information in point 9 of Annex II to Commission Regulation (EU) 2019/2023 is found: www.philco.cz			

* A (highest efficiency) to G (lowest efficiency)

Product Information Sheet



COMMISSION DELEGATED REGULATION (EU) 2019/2016

Supplier's name or trademark: PHILCO

Supplier's address: U Sanitasu 1621, 251 01 Říčany, CZ

Model identifier: PLDI 148 B King

General product parameters: Washmachine

Parameter	Value		Parameter	Value	
Rated capacity (kg)	8.0		Dimensions in mm	Height	850
				Width	600
				Depth	570
EEL _w	60		Energy efficiency class*	B	
Washing efficiency index	1.031		Rinsing effectiveness (g/kg)	5.0	
Energy consumption in kWh per cycle, based on the eco 40-60 programme. Actual energy consumption will depend on how the appliance is used.	0.545		Water consumption in litre per cycle, based on the eco 40-60 programme. Actual water consumption will depend on how the appliance is used and on the hardness of the water.	48	
Maximum temperature inside the treated textile (°C)	Rated capacity	34	Remaining moisture content (%)	Rated capacity	53.9
	Half	29		Half	53.9
	Quarter	21		Quarter	53.9
Spin speed (rpm)	Rated capacity	1400	Spin-drying efficiency class	B	
	Half	1400			
	Quarter	1400			
Programme duration (h:min)	Rated capacity	3:38	Type	Free-standing	
	Half	2:48			
	Quarter	2:48			
Airborne acoustical noise emissions in the spinning phase (dB(A) re 1 pW)	76		Airborne acoustical noise emission class (spinning phase)	B	

Off-mode (W)	0.5	Standby mode (W)	N/A
Delay start (W) (if applicable)	4	Networked standby (W) (if applicable)	N/A
Minimum duration of the guarantee offered by the supplier: 24 months			
This product has been designed to release silver ions during the washing cycle		No	
Additional information:			
Weblink to the supplier's website, where the information in point 9 of Annex II to Commission Regulation (EU) 2019/2023 is found: www.philco.cz			

* A (highest efficiency) to G (lowest efficiency)

Product Information Sheet



COMMISSION DELEGATED REGULATION (EU) 2019/2016

Supplier's name or trademark: PHILCO

Supplier's address: U Sanitasu 1621, 251 01 Říčany, CZ

Model identifier: PLDI 149 B KING

General product parameters: Washmachine

Parameter	Value		Parameter	Value	
Rated capacity (kg)	9.0		Dimensions in mm	Height	850
				Width	600
				Depth	570
EEL _w	59.9		Energy efficiency class*	B	
Washing efficiency index	1.031		Rinsing effectiveness (g/kg)	5.0	
Energy consumption in kWh per cycle, based on the eco 40-60 programme. Actual energy consumption will depend on how the appliance is used.	0.57		Water consumption in litre per cycle, based on the eco 40-60 programme. Actual water consumption will depend on how the appliance is used and on the hardness of the water.	49	
Maximum temperature inside the treated textile (°C)	Rated capacity	34	Remaining moisture content (%)	Rated capacity	53.9
	Half	34		Half	53.9
	Quarter	21		Quarter	53.9
Spin speed (rpm)	Rated capacity	1400	Spin-drying efficiency class	B	
	Half	1400			
	Quarter	1400			
Programme duration (h:min)	Rated capacity	3:38	Type	Free-standing	
	Half	2:54			
	Quarter	2:54			
Airborne acoustical noise emissions in the spinning phase (dB(A) re 1 pW)	76		Airborne acoustical noise emission class (spinning phase)	B	

Off-mode (W)	0.5	Standby mode (W)	N/A
Delay start (W) (if applicable)	4	Networked standby (W) (if applicable)	N/A
Minimum duration of the guarantee offered by the supplier: 24 months			
This product has been designed to release silver ions during the washing cycle		No	
Additional information:			
Weblink to the supplier's website, where the information in point 9 of Annex II to Commission Regulation (EU) 2019/2023 is found: www.philco.cz			

* A (highest efficiency) to G (lowest efficiency)

Product Information Sheet



COMMISSION DELEGATED REGULATION (EU) 2019/2016

Supplier's name or trademark: PHILCO

Supplier's address: U Sanitasu 1621, 251 01 Říčany, CZ

Model identifier: PLDSI 148 B KING

General product parameters: Washmachine

Parameter	Value		Parameter	Value	
Rated capacity (kg)	8.0		Dimensions in mm	Height	850
				Width	600
				Depth	480
EEL _w	60		Energy efficiency class*	B	
Washing efficiency index	1.031		Rinsing effectiveness (g/kg)	5.0	
Energy consumption in kWh per cycle, based on the eco 40-60 programme. Actual energy consumption will depend on how the appliance is used.	0.55		Water consumption in litre per cycle, based on the eco 40-60 programme. Actual water consumption will depend on how the appliance is used and on the hardness of the water.	48	
Maximum temperature inside the treated textile (°C)	Rated capacity	37	Remaining moisture content (%)	Rated capacity	53.9
	Half	33		Half	53.9
	Quarter	23		Quarter	53.9
Spin speed (rpm)	Rated capacity	1400	Spin-drying efficiency class	B	
	Half	1400			
	Quarter	1400			
Programme duration (h:min)	Rated capacity	3:38	Type	Free-standing	
	Half	2:48			
	Quarter	2:48			
Airborne acoustical noise emissions in the spinning phase (dB(A) re 1 pW)	76		Airborne acoustical noise emission class (spinning phase)	B	

Off-mode (W)	0.5	Standby mode (W)	N/A
Delay start (W) (if applicable)	4	Networked standby (W) (if applicable)	N/A
Minimum duration of the guarantee offered by the supplier: 24 months			
This product has been designed to release silver ions during the washing cycle		No	
Additional information:			
Weblink to the supplier's website, where the information in point 9 of Annex II to Commission Regulation (EU) 2019/2023 is found: www.philco.cz			

* A (highest efficiency) to G (lowest efficiency)

Product Information Sheet



COMMISSION DELEGATED REGULATION (EU) 2019/2016

Supplier's name or trademark: PHILCO

Supplier's address: U Sanitasu 1621, 251 01 Říčany, CZ

Model identifier: PLDI 1510 B KING

General product parameters: Washmachine

Parameter	Value		Parameter	Value	
Rated capacity (kg)	10.0		Dimensions in mm	Height	850
				Width	600
				Depth	570
EEL _w	60		Energy efficiency class*	B	
Washing efficiency index	1.031		Rinsing effectiveness (g/kg)	5.0	
Energy consumption in kWh per cycle, based on the eco 40-60 programme. Actual energy consumption will depend on how the appliance is used.	0.593		Water consumption in litre per cycle, based on the eco 40-60 programme. Actual water consumption will depend on how the appliance is used and on the hardness of the water.	52	
Maximum temperature inside the treated textile (°C)	Rated capacity	38	Remaining moisture content (%)	Rated capacity	53.9
	Half	38		Half	53.9
	Quarter	23		Quarter	53.9
Spin speed (rpm)	Rated capacity	1500	Spin-drying efficiency class	B	
	Half	1500			
	Quarter	1500			
Programme duration (h:min)	Rated capacity	3:59	Type	Free-standing	
	Half	3:00			
	Quarter	3:00			
Airborne acoustical noise emissions in the spinning phase (dB(A) re 1 pW)	80		Airborne acoustical noise emission class (spinning phase)	C	

Off-mode (W)	0.5	Standby mode (W)	N/A
Delay start (W) (if applicable)	4	Networked standby (W) (if applicable)	N/A
Minimum duration of the guarantee offered by the supplier: 24 months			
This product has been designed to release silver ions during the washing cycle		No	
Additional information:			
Weblink to the supplier's website, where the information in point 9 of Annex II to Commission Regulation (EU) 2019/2023 is found: www.philco.cz			

* A (highest efficiency) to G (lowest efficiency)

TECHNICAL INFORMATION

Technical information can be found on the type plate on the inside of the appliance and on the energy label. The QR code, on the supplied energy label, contains a link to register the appliance in the EU Eprel database. Keep the energy label, the instructions for use, together with other documents supplied with the device.

TESTING INFORMATION

The delivered device is in accordance with EcoDesign and EN 60335-2-7:2010+A1:2013+A11:2013+A2:2019; EN 60335-1:2012+A11:2014+A13:2017+A1:2019+A2:2019+A14:2019; EN 62233:2008. Air access requirements for proper operation of the device, the minimum distance from the wall and the dimensions of the device are part of this manual. If you have any further questions, please contact the manufacturer.

CUSTOMER CARE AND SERVICE

Always use original spare parts.

Model name and serial number can be found on the rating plate. Position of rating plate can be changed without notice.

The original spare parts for some specific components are available for a minimum of 7 or 10 years, based on the type of component, from the placing on the market of the last unit of the model.

When contacting our authorized service, have the model designation, serial number and defect description available.

To download documents, visit www.philco.cz.

To report a defect and obtain additional service information, visit <https://philco.cz/podpora-a-servis>.

Subject to change without notice.

INSTRUCTIONS AND INFORMATION REGARDING THE DISPOSAL OF USED PACKAGING MATERIALS

Dispose of packaging material at a public waste disposal site.

DISPOSAL OF USED ELECTRICAL AND ELECTRONIC APPLIANCES



The meaning of the symbol on the product, its accessory or packaging indicates that this product shall not be treated as household waste. Please, dispose of this product at your applicable collection point for the recycling of electrical & electronic equipment waste. Alternatively in some states of the European Union or other European states you may return your products to your local retailer when buying an equivalent new product. The correct disposal of this product will help save valuable natural resources and help in preventing the potential negative impact on the environment and human health, which could be caused as a result of improper liquidation of waste. Please ask your local authorities or the nearest waste collection centre for further details. The improper disposal of this type of waste may fall subject to national regulations for fines.

For business entities in the European Union

If you wish to dispose of an electrical or electronic device, request the necessary information from your seller or supplier.

Disposal in other countries outside the European Union

If you wish to dispose of this product, request the necessary information about the correct disposal method from local government departments or from your seller.



This product meets all the basic EU regulation requirements that relate to it.

Changes to the text, design and technical specifications may occur without prior notice and we reserve the right to make these changes.

The English version of the manual is a translation of the original operating manual, which is in Czech.

NOTES/POZNÁMKY

[illegible]

NOTES/POZNÁMKY

[illegible]

NOTES/POZNÁMKY

This image shows a single sheet of white paper with horizontal blue or grey ruling lines. The lines are evenly spaced and run across the width of the page. There are no margins, text, or other markings on the paper.

Výrobce/Manufacturer:
Fast ČR, a.s.
U Sanitasu 1621
Říčany 251 01, CZECH REPUBLIC

Distributor:
FAST PLUS, a.s.
Na pántoch 18
831 06 Bratislava, SLOVAKIA

PHILCO® 

is a pending or registered trademark of Electrolux Home Products, Inc. and used under a license from Electrolux Home Products, Inc.