

# Dishwasher

## OWNER'S MANUAL

**PHILCO**



*Famous for Quality the World Over*

**PD 1046 ET**  
**PD 1046 ETDX**

**Dear customer,**  
**Thank you for buying a PHILCO brand product. So that your appliance serves you well, please read all the instructions in this user's manual.**

# CONTENTS

**PART 1: SAFETY PRECAUTIONS .....2**

**PART 2: DISHWASHER FEATURES.....5**

**PART 3: INSTALLING THE MACHINE .....6**

**PART 4: BEFORE USING THE APPLIANCE.....10**

**PART 5: LOADING YOUR DISHWASHER .....14**

**PART 6: PROGRAMME TABLE .....17**

**PART 7: THE CONTROL PANEL .....19**


**PART 8: CLEANING AND MAINTENANCE.....22**

**PART 9: TROUBLESHOOTING .....24**

**PART 10: TECHNICAL SPECIFICATIONS .....27**

**PART 11: PRODUCT INFORMATION SHEET .....28**

## PART 1: SAFETY PRECAUTIONS

 **WARNING!** Please adhere to the precautions below when using the dishwasher:

This appliance can be used by children aged from 8 years and above and by persons with reduced physical, sensory or mental capabilities or lack of experience and knowledge if they have been given supervision or instructions concerning use of the appliance in a safe way and if they understand the hazards involved.


Children must not play with the appliance.

Cleaning and user maintenance cannot be performed by children without supervision.

If the supply cable gets damaged, have it replaced by a specialized service center in order to avoid dangerous situations. It is prohibited to use an appliance with the supply cable damaged.

Do not leave the door in the open position to prevent the risk of tripping.

When storing dishes into the dishwasher:

-  **WARNING:** Knives and other utensils with sharp points and edges must be placed in the basket with points facing downwards or stored horizontally.
- Sharp items should be placed so that they cannot damage the door gasket.

- Knives and other similar sharp items should always be placed with their handles pointing upwards so that the sharp edge would not hurt anybody.
- Do not use the dishwasher to wash plastic items that have not been labeled as dishwasher safe by the manufacturer. The presence of plastic dishes in the dishwasher causes worsening of drying process results. Please adhere to the manufacturer's recommendations regarding plastic items that have not been labeled as dishwasher safe.

This appliance is intended to be used only in households and not in similar premises, such as:

- kitchenettes in shops, offices and other workplaces;
  - appliances used by guests in hotels, motels, and other accommodation facilities;
  - appliances used in bed and breakfast facilities;
  - appliances used in catering and other similar non-vending environments.
- Do not sit or stand on the door and dish baskets of the dishwasher and do not use force during operation.
  - Do not place any heavy items on the appliance and do not stand on the door when it is open. The appliance might tip over towards the front.

Use only detergents and polishing agents intended to be used with automatic dishwashers. Never use soap, detergents or washing agents for manual dish washing.

Make sure to prevent children from accessing detergents and polishing agents and also open door of the dishwasher that might contain residues of the agents as they are strongly alkaline and might be very dangerous.

The appliance, the power cord or the electric outlet must not lie in, touch or be submerged in water or any other liquid to avoid electrical hazards.

If the power cord gets damaged, it must be replaced by the manufacturer, its service technician or another person with similar qualification so that safety is not jeopardized.

The appliance must not stand on the power cord.

The appliance should be connected to the water supply using a new hose, not using a hose that has already been used.

Dispose of packaging in a proper manner.

The power cord must not be excessively or dangerously bent or compressed during installation.

The controls are not to be played with.

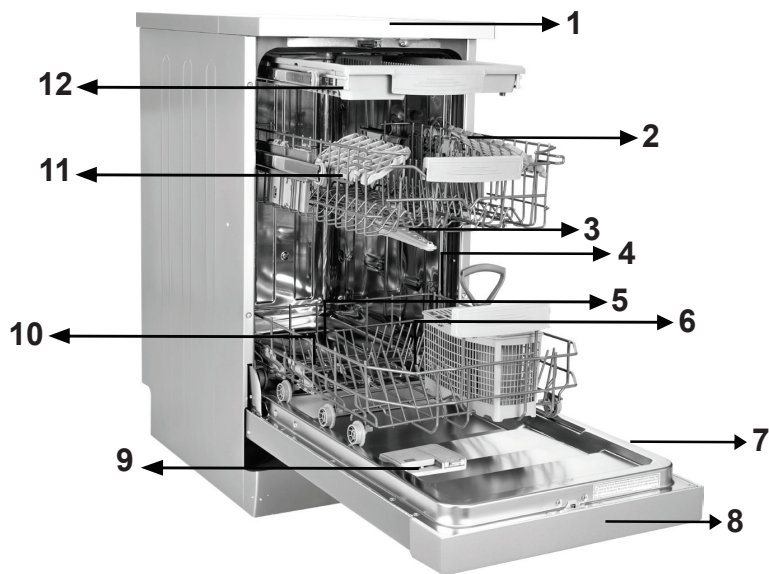
Make sure that the openings in the bottom part of the appliance are not blocked by the carpet.

The dishwasher should be used only for the purpose it was intended for - for washing dishes.

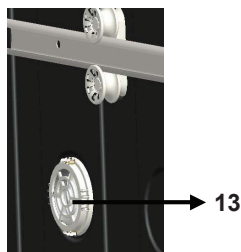
This dishwasher is for interior use only.

**PLEASE READ THOSE SAFETY PRECAUTIONS CAREFULLY AND  
STORE THEM FOR FUTURE REFERENCE**

## PART 2: DISHWASHER FEATURES



- |                            |                                      |
|----------------------------|--------------------------------------|
| 1. Worktop                 | 7. Rating plate                      |
| 2. Upper basket with racks | 8. Control panel                     |
| 3. Upper spray arm         | 9. Detergent and rinse-aid dispenser |
| 4. Lower basket            | 10. Salt dispenser                   |
| 5. Lower spray arm         | 11. Upper basket track latch         |
| 6. Filters                 | 12. Upper Cutlery Basket             |



**13. Turbo Drying Unit:** This system enhances the drying performance of your dishes.

## PART 3: INSTALLING THE MACHINE

### Machine positioning

When positioning the machine, place it in an area where dishes can be easily loaded and unloaded. Do not put the machine in an area where the ambient temperature falls below 0°C.

Read all warnings located on the packaging before removing the packaging and positioning the machine. Place the machine close to a water tap and drain. Take into consideration that the connections will not be altered once the machine is in position.

Do not hold the machine by its door or panel.

Leave an adequate distance around the machine to allow ease of movement when cleaning.



Ensure the water inlet and outlet hoses are not squeezed or trapped and that the machine does not stand on the electrical cable while positioning. Adjust the feet so the machine is level and balanced. The machine should be placed on flat ground otherwise it will be unstable and the door of the machine will not close properly.

### Water connection

We recommend fitting a filter to your water inlet supply in order to prevent damage to your machine due to contamination (sand, rust, etc.) from indoor plumbing. This will also help prevent yellowing and deposit formation after washing.

Note printing on the water inlet hose!

If models are marked with 25°, the water temperature may be max. 25 °C (cold water).

For all other models:

Cold water preferred; hot water max. temperature 60 °C.

### Water inlet hose



#### **WARNING!**

Use the new water inlet hose supplied with your machine, do not use an old machine's hose.



**WARNING!**

Use the new water inlet hose supplied with your machine, do not use an old machine's hose.

**WARNING!**

Run water through the new hose before connecting.

**WARNING!**

Connect the hose directly to the water inlet tap. The pressure supplied by the tap should be a minimum of 0.03 MPa and a maximum of 1 MPa. If the pressure exceeds 1 MPa, a pressure relief valve must be fitted between the connection.

**WARNING!**

After the connections are made, turn the tap on fully and check for water leaks. Always turn off the water inlet tap after a wash program has finished.



An Aquastop water spout is available with some models. Do not damage it or allow it to become kinked or twisted.

## Electrical connection

**WARNING!**

Your machine is set to operate at 220-240 V. If the mains voltage supply to your machine is 110 V, connect a transformer of 110/220 V and 3000 W between the electrical connection.



**Connect the product to a grounded outlet protected by a fuse complying with the values in the "Technical Specifications" table".**



**The earthed plug of the machine must be connected to an earthed outlet supplied by suitable voltage and current.**



**In the absence of earthing installation, an authorised electrician should carry out an earthing installation. In the case of use without earthing installed, we will not be responsible for any loss of use that may occur.**



**The plug on this appliance may incorporate 13A fuse depending on the target country. (For Example UK, Saudi Arabia)**

## Fitting the machine undercounter

If you wish to fit your machine undercounter, there must be sufficient space to do so and the wiring-plumbing must be suitable to do so (1). If the space under the countertop is suitable for fitting your machine, remove the worktop as shown in the illustration (2).



### **WARNING!**

The countertop, of which the machine will be placed under, must be stable in order to prevent imbalance. The top panel of the dishwasher must be removed to fit the machine under the countertop.

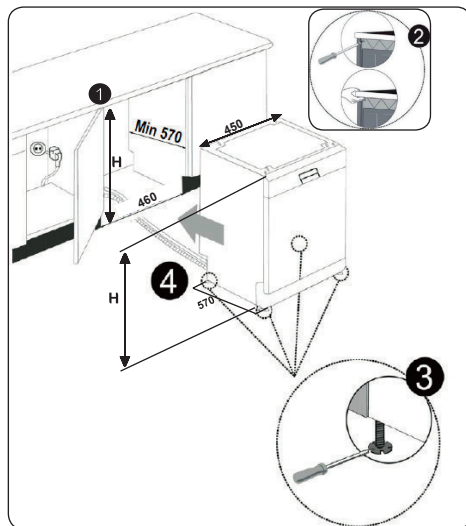
To remove the top panel, remove the screws that hold it on, located at the rear of the machine. Then, push the panel 1 cm from the front towards the rear and lift it. Adjust the machine feet according to the slope of the floor (3).

Fit your machine by pushing it under the counter taking care not to crush or bend the hoses (4).



### **WARNING!**

After removing the top panel of your dishwasher, the machine should be placed in a space of the dimensions shown in the figure below.



## PART 4: BEFORE USING THE APPLIANCE

### Preparing your dishwasher for first use

- Make sure the electricity and supply water specifications match the values indicated in the installation instructions for the machine.
- Remove all packaging material inside the machine.
- Set the water softener level.
- Fill the rinse aid compartment.

### Salt usage

For a good washing function, the dishwasher needs soft, i.e. less calcareous water. Otherwise, White lime residues will remain on the dishes and the interior equipment. This will negatively affect your machine's washing, drying and shining performance. When water flows through the softener system, the ions forming the hardness are removed from the water and the water reaches the softness required to obtain the best washing result. Depending on the level of hardness of the inflowing water, these ions that harden the water accumulate rapidly inside the softener system. Therefore, the softener system has to be refreshed so that it operates with the same performance also during the next wash. For this purpose, dishwasher salt is used.

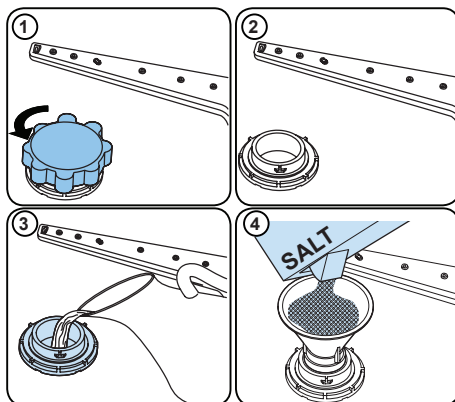
Machine can only be used by special dishwasher salt to soften the water. Do not use any small grained or powdered type of salts which can easily soluble. Using any other type of salt can damage your machine.

### Fill the salt

When you want to add water softening salt, open the salt compartment cover by rotating it anticlockwise. (1) (2) When using the appliance for the first time, fill the compartment with water and 1 kg of salt (3); the compartment should be full so that it almost overflows. If possible, using funnel (4) will make filling easier.

Close the cover after the filling. (5) Launch a short programme. (6) Refill the salt container to make it full again. (7) Launch a short programme. Now the dishwasher is ready to be used.

When salt is running out, an indicator will light up on the display. In this case refill the salt and always launch a short programme afterwards, this will prevent corrosion from forming in the dishwasher.








**The salt compartment should only be filled with water when the appliance is used for the first time.**

**Only salt intended for use in dishwashers should be used.**

**When salt overflows and gets out of the salt container, launch a short washing programme to protect the dishwasher from corrosion. Otherwise there is a risk of corrosion forming in the dishwasher.**

## Test Strip

	Run water through the tap (1min.)	Keep the strip in the water (1sec)	Shake the strip.	Wait (1min.)	Set the hardness level of your machine.
					<div><div></div><div></div><div></div><div></div><div></div><div></div></div> <div>2<div></div><div></div><div></div><div></div><div></div><div></div></div> <div>3<div></div><div></div><div></div><div></div><div></div><div></div></div> <div>4<div></div><div></div><div></div><div></div><div></div><div></div></div> <div>5<div></div><div></div><div></div><div></div><div></div><div></div></div> <div>6<div></div><div></div><div></div><div></div><div></div><div></div></div>

**NOTE:**

The level is set to 3 as default. If the water is well water or has a hardness level above 90 dF, we recommend that you use filter and refinement devices.

## Water Hardness Table

Level	German dH	French dF	British dE	Indicator
1	0-5	0-9	0-6	L1 is seen on the display.
2	6-11	10-20	7-14	L2 is seen on the display.
3	12-17	21-30	15-21	L3 is seen on the display.
4	18-22	31-40	22-28	L4 is seen on the display.
5	23-31	41-55	29-39	L5 is seen on the display.
6	32-50	56-90	40-63	L6 is seen on the display.

## Water Softener System

The dishwasher is equipped with a water softener which reduces the hardness in the mains water supply. To find out the hardness level of your tap water, contact your water company or use the test strip (if available).

## Setting

- Turn on the machine by pressing the On/Off button.
- Press the Program button for at least 3 seconds immediately after the machine is turned on.
- Release the Program button when “SL” is shown. Next, the last setting level is displayed.
- Press the program button to set the desired level. Each press of the program button increases the level. Once level 6 has been reached, the next press returns the level to 1.
- The last selected water hardness level is stored in the memory by turning the machine off with the On/Off button.

## Detergent usage

Only use detergents specifically designed for domestic dishwashers. Keep your detergents in cool, dry places out of reach of children.

Add the proper detergent for the selected program to ensure the best performance. The amount of detergent needed depends on the cycle, load size, and soil level of dishes.

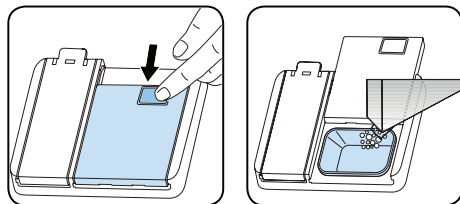
Do not fill detergent into the detergent compartment more than required; otherwise you can see whitish streaks or bluish layers on glass and dishes and may cause glass corrosion. Continued use of too much detergent may cause machine damage. Using little detergent can result in poor cleaning and you can see whitish streaks in hard water. See the detergent manufacturer's instructions for a further information.

## Filling the detergent

Push the latch to open the dispenser and pour in the detergent.

Close the lid and press it until it locks in place.

The dispenser should be refilled just before the start of each programme. If the dishes are heavily soiled, place additional detergent in the pre-wash detergent chamber.



## Using combined detergents

These products should be used according to the manufacturer's instructions.

Never put combined detergents into the interior section or the cutlery basket.

Combined detergents contain not only the detergent but also rinse-aid, salt replacement substances and additional components depending on the combination.

We recommend you do not use combined detergents in short programmes. Please use powder detergents instead. If you encounter problems when using combined detergents, please contact the detergent manufacturer.

When you stop using combined detergents, make sure that water hardness and rinse aid settings are set to the correct level.

## Rinse-aid usage

The rinse aid helps to dry the dishes without streaks and stains. Rinse-aid is required for stain-free utensils and clear glasses. The rinse aid is automatically released during the hot rinse phase. If rinse aid dosage setting set too low, whitish stains remains on dishes and dishes do not dry and washed clean. If rinse aid dosage setting set too height, you can see bluish layers on glass and dishes.

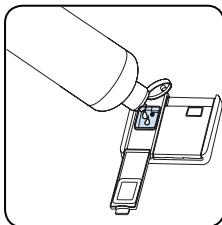
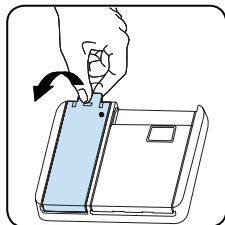
## Filling the rinse-aid and setting

To fill the rinse aid compartment, open the rinse-aid compartment cap. Fill the compartment with rinse aid to the MAX level and then close the cap. Be careful not to overfill the rinse aid compartment and wipe up any spills.

**In order to change the rinse aid level, follow the below steps before turning on the machine:**

- Turn on the machine by pressing the On/Off button.
- Press the Programme button for at least 5 seconds immediately after the machine is turned on.
- Release the Programme button when "rA" is shown. Rinse aid level setting follows water hardness level setting. Next, the last setting level is displayed.
- The machine will display the last setting.
- Set the level by pushing the programme button.
- Switch off the machine to save the setting.
- The factory setting is "4".

If the dishes are not drying properly or are spotted, increase the level. If blue stains form on your dishes, decrease the level.



Level	Brightener Dose	Indicator
1	Rinse-aid not dispensed	r1 is shown on the display.
2	1 dose is dispensed	r2 is shown on the display.
3	2 doses are dispensed	r3 is shown on the display.
4	3 doses are dispensed	r4 is shown on the display.
5	4 doses are dispensed	r5 is shown on the display.

## PART 5: LOADING YOUR DISHWASHER

For best results, follow these loading guidelines. Loading the household dishwasher up to the capacity indicated by the manufacturer will contribute to energy and water savings.

Manual pre-rinsing of tableware items leads to increased water and energy consumption and is not recommended. You can place cups, glasses, stemware, small plates, bowls, etc. in upper basket. Do not lean long glasses against one another or they cannot remain steady and may receive damage. When placing long stem glasses and goblets, lean them against the basket edge or rack and not against other items.

Place all containers such as cups, glasses and pots into the dishwasher with the opening facing downwards otherwise water can collect on items.

If there is cutlery basket in machine, you are recommended to use the cutlery grid in order to obtain the best result. Place all large (pots, pans, lids, plates, bowls etc.) and very dirty items in the lower rack.

Dishes and cutlery should not be placed above each other.



### **WARNING!**

Take care not to obstruct the rotation of spray arms.



### **WARNING!**

Make sure after loading the dishes do not prevent opening the detergent dispenser.

## Recommendations

Remove any coarse residue on dishes before placing the dishes in the machine. Start the machine with full load.

### **NOTE:**

Do not overload the drawers or place dishes in the wrong basket.



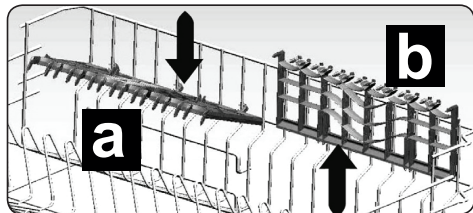
### **WARNING!**

To avoid any possible injuries, place long-handle and sharp-pointed knives with their sharp points facing down or horizontally on the baskets.



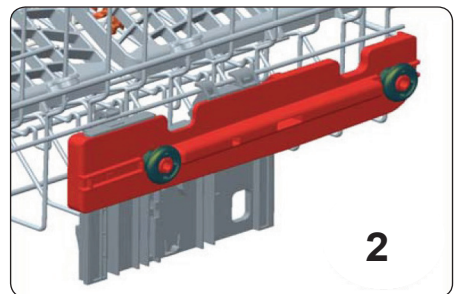
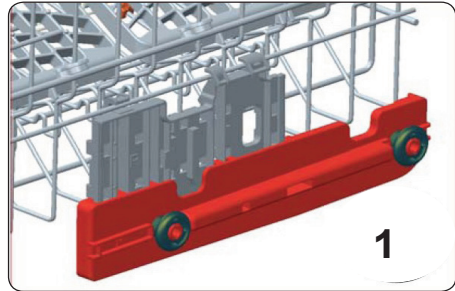
## Top basket Fixed Rack

Upper basket racks have two positions: open (a) and closed (b). You can place cups on the racks to be washed. You can also place long forks, knives and spoons on the racks laterally.



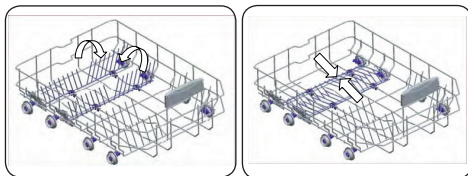
## Upper Basket

The upper basket includes a mechanism which enables the height of the basket to be adjusted up (1) or down (2) without having to remove the basket. Hold the basket on both sides and pull it up or push it down, ensuring both sides of the upper basket are in the same position.



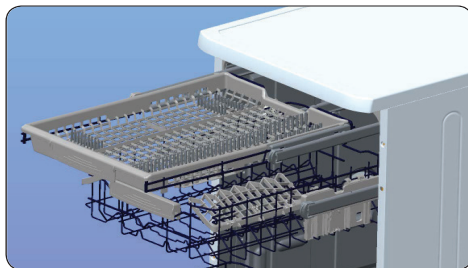
## Two Folding Racks

The folding racks allow large items, such as pots and pans, to be placed more easily. Each part can be folded separately. They can either be raised upwards or folded down.

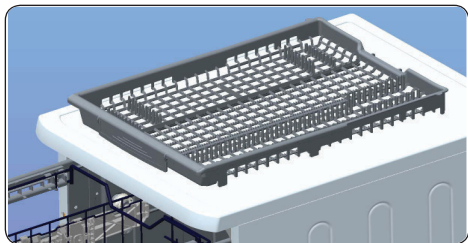


## Upper Cutlery Basket

The upper cutlery basket is designed for the placement of large and small cutlery and utensils.



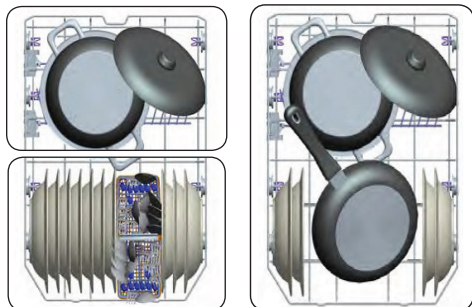
It is easily removed from the dishwasher, therefore allows ease of use when removing your items, along with the basket, after washing.



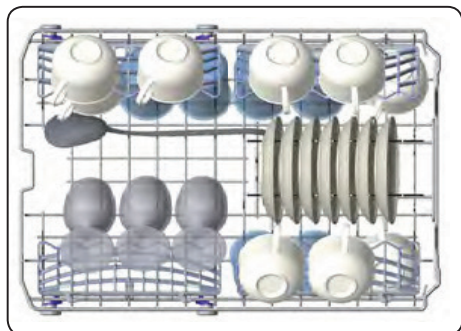
**WARNING:** Knives and other sharp objects must be placed horizontally in the cutlery basket.

## Alternative Basket Loads

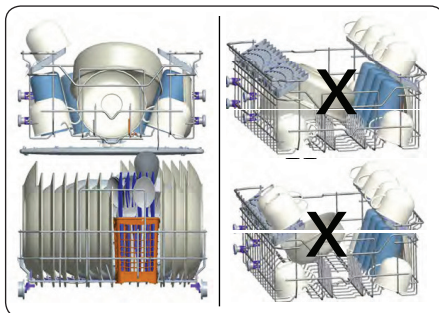
### Lower Basket



### Top Basket



## Incorrect loads








Incorrect loading can cause poor washing and drying performance. Please follow the manufacturer's recommendations for a good performance result.

### Important Note for Test Laboratories

For detailed information required for tests according to EN normatives and a softcopy of the manual, please send the model name and serial number to the following address: [dishwasher@standardtest.info](mailto:dishwasher@standardtest.info)

## PART 6: PROGRAMME TABLE

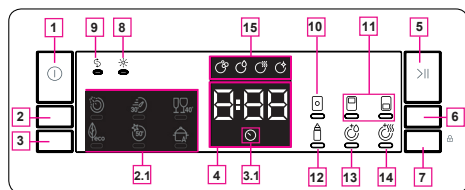
	P1 	P2 	P3 	P4 	P5 	P6 	
Program Name:	Prewash	Quick 30'	Delicate 40°C	Eco	Super 50'	Intensive 65°C (Model depending)	Auto (Model depending)
Type of Soil:	Suitable to rinse dishes that you plan to wash later.	Suitable for lightly soiled dishes and quick wash.	Suitable for lightly soiled delicate dishes.	Standard program for normally soiled daily using dishes with reduced energy and water consumptions.	Suitable for normally soiled daily dishes with faster program.	Suitable for heavily soiled dishes.	Auto program for heavily soiled dishes.
Level of Soil:	Light	Light	Light	Medium	Medium	Heavy	Heavy
Amount of Detergent: A: 25 cm <sup>3</sup> B: 15 cm <sup>3</sup>	-	A	A	A	A	A	A
Program Duration (h:min)	00:15	00:30	1:14	3:42	00:50	02:02	01:39 - 02:02
Electricity consumption (kWh/cycle)	0.020	0.670	0.800	0.755	1.000	1.600	1.300 - 1.600
Water consumption (l/cycle)	3.6	9.9	13.2	9.0	9.9	14.0	11.2 - 14.0

- The program duration may change according to the amount of dishes, the water temperature, the ambient temperature and selected additional functions.
- Values given for programmes other than the eco programme are indicative only
- If your model has turbidity sensor, it has Auto program instead of Intensive program.
- Eco programme is suitable to clean normally soiled tableware, that for this use, it is the most efficient programme in terms of its combined energy and water consumption, and that it is used to assess compliance with the EU ecodesign legislation.
- Washing tableware in a household dishwasher usually consumes less energy and water in the use phase than hand dishwashing when the household dishwasher is used according to the manufacturer's instructions.
- Only use powder detergent for short programs.
- Short programs do not include drying.
- To assist drying, we recommend slightly opening the door after a cycle is complete.
- You can access the product database where the model information is stored by reading the QR code on the energy label.

**NOTE:**

According to regulations 1016/2010 and 1059/2010, Eco program energy consumption values may differ. This table is in line with regulations 2019/2022 and 2017/2022.

## PART 7: THE CONTROL PANEL



1. The ON/OFF button
2. The Program Selection button
- 2.1 Program indicators
3. The Delayed Start button
- 3.1 The Delayed Start indicator
4. The Remaining Time indicator
5. The Start/Pause button
6. The Options button
7. The Select button
8. The Rinsing agent indicator
9. The Salt indicator
10. The Tablet indicator
11. The Half Load indicator
12. The Extra Hygiene indicator
13. The Extra Rinsing option
14. The Extra Drying indicator
15. Washing phases indicators
  - a- The washing phase indicator
  - b- The rinsing phase indicator
  - c- The drying phase indicator
  - d- The final phase indicator

### 1. The ON/OFF button

To switch the appliance on, press the ON/OFF button.

### 2. The Program Selection button

Select the suitable program by pressing the Program button. The indicator of the selected program (2.1) will light up. For details on the programs, please see the "Program table" section.

### 3. The Delayed Start button

By pressing the Delayed Start button before starting the program, you can delay the program by 1-2 ... 24 hours (3). The Delayed Start indicator (3.1) will light up. In order to change the delay duration, first press the Start/Pause button, then press the Delay Time button and select new time value. To activate the new delay time, press the Start/Pause button.

In order to cancel the delay, you must change the value to 0 hours using the Delay Time button.

### 4. The Remaining Time indicator

You can monitor the progress of the program using the Washing, Rinsing, Drying, End and Remaining Time indicators.

### 5. The Start/Pause button

You can start the program by pressing the Start/Pause button. The Washing indicator lights up and the Remaining Time indicator will show the duration of the program. It will also display the remaining time during the program. If you open the appliance door while the program is running, the duration of the program will pause and the indicator of the current washing phase will start flashing.

### 6. The Options button

You can select options by pressing the Options button repeatedly. The selected option is indicated by a flashing LED indicator.

### 7. The Select button

An option can be selected by pressing the Select button. The LED indicator of the selected option will remain lit.

### 8. The Rinsing agent indicator

When the rinsing agent level is low, the insufficient rinsing agent indicator will illuminate and you will have to refill the rinsing chamber.

### 9. The Salt indicator

If the amount of softening salt is insufficient, the low salt indicator will illuminate and you should add salt.

### 10. The Tablet indicator

When using multi-tablets containing salt, polish and other agents, select the Tablet function. The Tablet indicator will stay on as long as this option is selected. This option will change the temperature and duration of the washing.

### 11. The Half Load indicator

By choosing the Half Load function you can select the area of the dishwasher that contains the dishes to be washed. You can select both baskets, only the upper basket or only the lower basket. Press the button until the symbol corresponding to the basket containing the dishes that you want to wash lights up. When this feature is turned on, the Half Load indicator is on. Dishes placed in other sections will not be washed.

## 12. The Extra Hygiene indicator

If you select the Extra Hygienic Washing function, the washing temperature will increase to ensure maximum hygiene. The Extra Hygiene indicator will light up.

## 13. The Extra Rinsing option

As soon as you select the Extra Rinsing function, the wash-rinse steps will be added to the selected program, and the dishes that you remove from the dishwasher in the end will be cleaner and shinier.

## 14. The Extra Drying indicator

If you select the Extra Drying option, additional heating and drying will be added to the selected program, and your dishes will be completely dry.

## 15. Washing phases indicators

The display shows the indicators corresponding to the status of the running program. When the Drying indicator is on, the dishwasher will remain silent for 15 to 100 minutes, depending on the selected program.

- \* Washing
- \* Rinsing
- \* Drying
- \* End

### NOTE:

The child lock is activated/deactivated by pressing the button (7) for approx. 3 seconds. When it is activated, all the indicators will flash and the remaining time indicator will show "CL" (4). When deactivated, all indicators and "CL" will flash twice.

### NOTE:

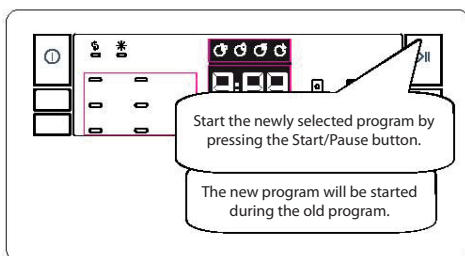
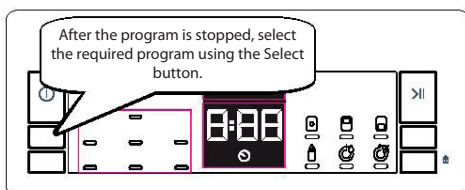
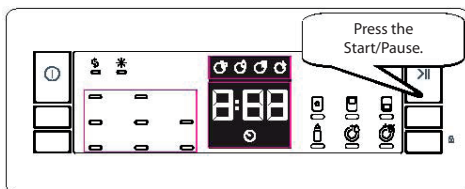
If you switch off the appliance after you select the delay start time and the program starts, the delay time will be canceled.

### NOTE:

If you want to save any program as your favorite program, press the Program Selection (2) and the Delayed Start (3) buttons at the same time. To select a favorite program, press the Program Selection button (2) for 3 seconds.

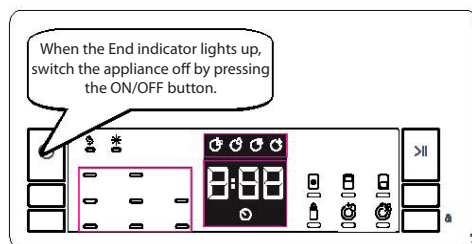
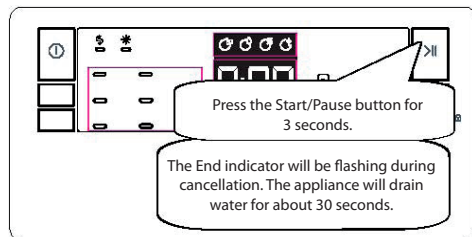
## Program change

If you want to change the program when the appliance is already running.

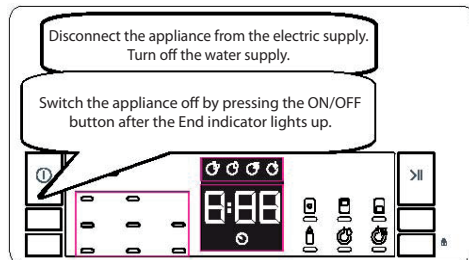


## Canceling a program

If you want to cancel the program while it is running.



## Switching the appliance off



### NOTE:

Do not open the door until the program has reached its end.

### NOTE:

At the end of the washing program, you can leave the door of your appliance ajar to speed up drying.

### NOTE:

If the appliance door is opened or in the event of a power failure during washing, the program will continue after the door is closed or after the power supply is restored.

## PART 8: CLEANING AND MAINTENANCE

Cleaning your dishwasher is important to maintain the machine's service life. Make sure that the water softening setting (If available) is done correctly and correct amount of detergent is used to prevent limescale accumulation. Refill the salt compartment when the salt sensor light comes on.

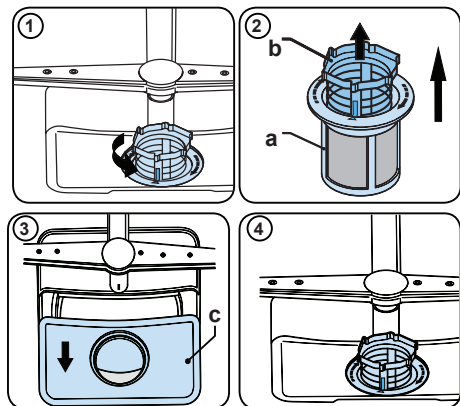
Oil and limescale may build up in your Dishwasher over time. If this occurs:

- Fill the detergent compartment but do not load any dishes. Select a programme which runs at high temperature and run the Dishwasher empty. If this does not clean your Dishwasher sufficiently, use a cleaning agent designed for use with dishwashers.
- To extend the life of your dishwasher, clean the appliance regularly on each month
- Wipe the door seals regularly with a damp cloth to remove any accumulated residue or foreign objects.

### Filters

Clean the filters and spray arms at least once a week. If any food waste remains or foreign objects on the coarse and fine filters, remove them and clean them thoroughly with water.

- a) Micro Filter      b) Coarse Filter  
c) Metal Filter

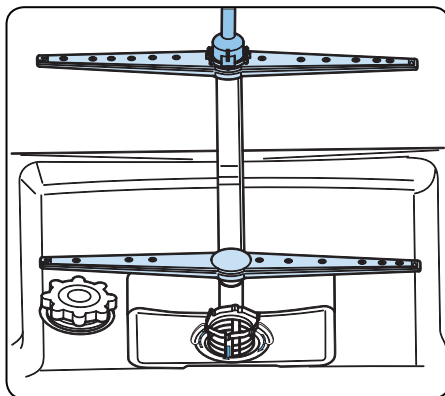


To remove and clean the filter combination, turn it counter clockwise and remove it by lifting it upwards (1). Pull the coarse filter out of the micro filter (2). Then pull and remove the metal filter (3). Rinse the filter with lots of water until it is free of residue. Reassemble the filters. Replace the filter insert, and rotate it clockwise (4).

- Never use your dishwasher without a filter.
- Incorrect fitting of the filter will reduce the washing effectiveness.
- Clean filters are necessary for proper running of the machine.

### Spray arms

Make sure that the spray holes are not clogged and that no food waste or foreign object is stuck to the spray arms. If there is any clogging, remove the spray arms and clean them under water. To remove the upper spray arm, undo the nut holding it in position by turning it clockwise and pulling it downwards. Make sure that the nut is properly tightened when refitting the upper spray arm.





## Drain Pump

Large food residues or foreign objects which were not captured by the filters may block the waste water pump. The rinsing water will then be above the filter.

### **Warning Risk of cuts!**

When cleaning the waste water pump, ensure that you do not injure yourself on pieces of broken glass or pointed implements.

In this case:

1. First always disconnect the appliance from the power supply.
2. Take out baskets.
3. Remove the filters.
4. Scoop out water, use a sponge if required.
5. Check the area and remove any foreign objects.
6. Install filters.
7. Re-insert baskets.

## PART 9: TROUBLESHOOTING

FAULT	POSSIBLE CAUSE	TROUBLESHOOTING
The programme does not start.	Your Dishwasher is not plugged in.	Plug your Dishwasher in.
	Your Dishwasher is not switched on.	Switch your Dishwasher on by pressing the On/Off button.
	Fuse blown.	Check your indoor fuses.
	Water inlet tap is closed.	Turn on the water inlet tap.
	Your Dishwasher door is open.	Close the Dishwasher door.
	Water inlet hose and machine filters are clogged.	Check the water inlet hose and machine filters and make sure they are not clogged.
Water remains inside the machine.	Water drain hose is clogged or twisted.	Check the drain hose, then either clean or untwist it.
	The filters are clogged.	Clean the filters.
	The programme is not finished yet.	Wait until the programme is finished.
Machine stops during washing.	Power failure.	Check mains power.
	Water inlet failure.	Check water tap.
Shaking and hitting noises are heard during a wash operation.	The spray arm is hitting the dishes in the lower basket.	Move or remove items blocking the spray arm.
Partial food wastes remain on the dishes.	Dishes placed incorrectly, sprayed water not reaching affected dishes.	Do not overload baskets.
	Dishes leaning each another.	Place dishes as instructed in the section on loading your dishwasher.
	Not enough detergent used.	Use the correct amount of detergent, as instructed in the programme table.
	Wrong wash programme selected.	Use the information in the programme table to select the most appropriate programme.
	Spray arms clogged with food waste.	Clean the holes in the spray arms with thin objects.
	Filters or water drain pump clogged or filter misplaced.	Check the drain hose and filters are correctly fitted.

FAULT	POSSIBLE CAUSE	TROUBLESHOOTING
Whitish stains remains on dishes.	Not enough detergent used.	Use the correct amount of detergent, as instructed in the programme table.
	Rinse aid dosage and/or water softener setting set too low.	Increase rinse aid and/or water softener level.
	High water hardness level.	Increase water softener level and add salt.
	Salt compartment cap not closed properly.	Check that the salt compartment cap is closed properly.
Dishes do not dry.	Drying option is not selected.	Select a programme with a drying option.
	Rinse aid dosage set too low.	Increase rinse aid dosage setting.
Rust stains form on the dishes.	Stainless-steel quality of the dishes is insufficient.	Use only dishwasher-proof sets.
	High level of salt in wash water.	Adjust the water hardness level using water hardness table.
	Salt compartment cap not closed properly.	Check that the salt compartment cap is closed properly.
	Too much salt spilled in the Dishwasher while filling it with salt.	Use funnel while filling salt to the compartment to avoid spillage.
	A poor mains grounding.	Consult a qualified electrician immediately.
Detergent remains in the detergent compartment.	Detergent was added when the detergent compartment was wet.	Make sure detergent compartment is dry before use.

## AUTOMATIC ERROR MESSAGES AND THEIR SOLUTIONS

ERROR CODE	POSSIBLE MALFUNCTION	SOLUTION
FF	Water supply malfunction	Make sure that the water supply valve is open and that water is flowing.
		Disconnect the supply hose from the tap and clean the hose filter.
		If the error persists, contact the service center.
F5	Pressure system malfunction	Contact the service center.
F3	Water supply malfunction	Close the water supply valve and contact the service center.
F2	Water cannot be drained	The drain hose and filters may be clogged.
		Cancel the program.
		If the error persists, contact the service center.
F8	Heating malfunction	Contact the service center.
F1	Overflowing	Disconnect the appliance from the electric supply and close the water supply valve.
		Contact the service center.
FE	Faulty electronic card	Contact the service center.
F7	Overheating	Contact the service center.
F9	Faulty partition position	Contact the service center.
F6	Faulty heating sensor	Contact the service center.
HI	Very high voltage	Contact the service center.
LO	Very low voltage	Contact the service center.

Installation and repair activities must always be performed by authorized service center representatives in order to prevent possible risks. The manufacturer is not responsible for damage that may occur during procedures performed by unauthorized persons. Repairs must only be performed by a technician. If a part needs to be replaced, make sure that only original spare parts are used.

Improper repairs or using non-original spare parts can cause significant damage and expose the user to considerable risk.

Customer service contact information can be found at the back of this manual. You can obtain original spare parts related to the respective functions according to the relevant ecodesign order from customer service for at least 10 years from the date on which your appliance was placed on the market within the European Economic Area.

## PART 10: TECHNICAL SPECIFICATIONS

Capacity	10 place settings
Height	850 mm
Width	450 mm
Depth	598 mm
Net Weight	40 kg
Electricity input	220-240 V, 50 Hz
Total current	10 A
Total Power	1900 W
Water supply pressure	Maximum: 1 (Mpa) Minimum: 0.03 (Mpa)

### Conformity with the standards and Test data / EU Declaration of Conformity

This product meets the requirements of all applicable EU directives with the corresponding harmonised standards, which provide for CE marking.

**Important Note for User:** For softcopy of this user manual, please contact following address:

**“dishwasher@standardtest.info”.** In your e-mail, please provide the model name and serial number (20 digits) which you can find on the appliance door.

## PART 11: PRODUCT INFORMATION SHEET

# Product Information Sheet

**PHILCO** 

COMMISSION DELEGATED REGULATION (EU) 2019/2016

**Supplier's name or trademark:** PHILCO

**Supplier's address:** U Sanitasu 1621 Říčany 251 01, Czech Republic

**Model identifier:** PD 1046 ET / PD 1046 ETDX

**General product parameters:** Dishwasher

Parameter	Value	Parameter	Value
Rated capacity (kg)	10	Dimensions in cm	Height 850
			Width 450
			Depth 600
EEI <sub>w</sub>	55.9	Energy efficiency class *	E
Cleaning performance index	1.13	Drying performance index	1.07
Energy consumption in kWh [per cycle], based on the eco programme using cold water fill. Actual energy consumption will depend on how the appliance is used.	0.755	Water consumption in litres [per cycle], based on the eco programme. Actual water consumption will depend on how the appliance is used and on the hardness of the water.	9
Programme duration (h:min)	3:42	Type	Free-standing
Airborne acoustical noise emissions (dB(A) re 1 pW)	45	Airborne acoustical noise emission class	C
Off-mode (W)	0.5	Standby mode (W)	1
Delay start (W) (if applicable)	1	Networked standby (W) (if applicable)	-

**Minimum duration of the guarantee offered by the supplier:** 24 months

**Additional information:**

Weblink to the supplier's website, where the information in point 6 of Annex II to Commission Regulation (EU) 2019/2022 is found: [www.philco.cz](http://www.philco.cz)

\* A (highest efficiency) to G (lowest efficiency)

## TECHNICAL INFORMATION

Technical information can be found on the type plate on the inside of the appliance and on the energy label. The QR code, on the supplied energy label, contains a link to register the appliance in the EU Eprel database. Keep the energy label, the instructions for use, together with other documents supplied with the device.

## TESTING INFORMATION

The delivered device is in accordance with EcoDesign and EN62552. Air access requirements for proper operation of the device, the minimum distance from the wall and the dimensions of the device are part of this manual. If you have any further questions, please contact the manufacturer.

## CUSTOMER CARE AND SERVICE

Always use original spare parts.

Model name and serial number can be found on the rating plate. Position of rating plate can be changed without notice.

The original spare parts for some specific components are available for a minimum of 7 or 10 years, based on the type of component, from the placing on the market of the last unit of the model.

When contacting our authorized service, have the model designation, serial number and defect description available.

To download documents, visit [www.philco.cz](http://www.philco.cz).

To report a defect and obtain additional service information, visit <https://philco.cz/podpora-a-servis>.

Subject to change without notice.

## INSTRUCTIONS AND INFORMATION REGARDING THE DISPOSAL OF USED PACKAGING MATERIALS

Dispose of packaging material at a public waste disposal site.

## DISPOSAL OF USED ELECTRICAL AND ELECTRONIC APPLIANCES



The meaning of the symbol on the product, its accessory or packaging indicates that this product shall not be treated as household waste. Please, dispose of this product at your applicable collection point for the recycling of electrical & electronic equipment waste. Alternatively in some states of the European Union or other European states you may return your products to your local retailer when buying an equivalent new product. The correct disposal of this product will help save valuable natural resources and help in preventing the potential negative impact on the environment and human health, which could be caused as a result of improper liquidation of waste. Please ask your local authorities or the nearest waste collection centre for further details. The improper disposal of this type of waste may fall subject to national regulations for fines.

### **For business entities in the European Union**

If you wish to dispose of an electrical or electronic device, request the necessary information from your seller or supplier.

### **Disposal in other countries outside the European Union**

If you wish to dispose of this product, request the necessary information about the correct disposal method from local government departments or from your seller.



This product meets all the basic EU regulation requirements that relate to it.

Changes to the text, design and technical specifications may occur without prior notice and we reserve the right to make these changes.

Original of this user manual is in czech language.



## This image shows a blank sheet of white paper with horizontal ruling lines. The lines are evenly spaced and run across the width of the page. There are no margins, text, or other markings on the paper.

## NOTES/POZNÁMKY/NOTATKI

[illegible]

## This image shows a single sheet of white paper with horizontal ruling lines. The lines are evenly spaced and run across the width of the page. There are no margins, text, or other markings on the paper.

Výrobce/Manufacturer:  
Fast ČR, a.s.  
U Sanitasu 1621  
Říčany 251 01, CZECH REPUBLIC

Distributor:  
FAST PLUS, a.s.  
Na pántoch 18  
831 06 Bratislava, SLOVAKIA

Distributor:  
FAST POLAND Sp. z o. o.  
Kwietniowa 36  
05-090 Wypędy, POLAND

**PHILCO®** 

**is a pending or registered trademark of Electrolux Home Products, Inc. and used under a license from Electrolux Home Products, Inc.**