

# Washing Machine

## OWNER'S MANUAL

**PHILCO**



*Famous for Quality the World Over*

**PLDSI 126 C steam**  
**PLDSI 147 C steam**

**PLDSI 126 CSPL**  
**PLDSI147CSPL**

**PLDSI 126 CSHU**  
**PLDSI147CSHU**

**Dear customer,  
Thank you for buying a PHILCO brand product. So that your appliance serves you well, please read all the instructions in this user's manual.**

# CONTENTS

<b>SAFETY INSTRUCTIONS</b> .....	<b>2</b>
<b>BEFORE USING THE WASHING MACHINE</b> .....	<b>10</b>
Removing the packaging and inspection .....	10
Remove the transport bolts .....	10
Install the washing machine .....	10
Water inlet.....	10
Drain.....	10
Electrical connection .....	11
Installation guide .....	12
Transport / Handling.....	12
Parts supplied.....	13
<b>DESCRIPTION OF THE WASHING MACHINE</b> .....	<b>17</b>
<b>BEFORE THE FIRST WASH CYCLE</b> .....	<b>18</b>
Preparation of the washing .....	18
Detergents and additives.....	19
<b>WASHING MACHINE PROGRAMS</b> .....	<b>21</b>
Control Panel (PLDSI 126 C Steam, PLDSI 147 C Steam) .....	21
Table of programs .....	21
Add Detergent, Close the Door and Set the Program .....	24
Addition function selection.....	24
Inlet water warning .....	24
Drainage warning .....	24
Door Lock Icon .....	25
Delay End Function .....	25
Favourite.....	25
Mute Function .....	25
Automatic weighting.....	26
Child Lock.....	26
To Start the Program .....	26
To Cancel the Program or Reselect the Options .....	26
End of the Program.....	26
Programme Instructions.....	27
<b>CARE AND MAINTENANCE</b> .....	<b>28</b>
Filter .....	28
Water supply hose .....	29
Mesh filter for water connection .....	29
<b>TROUBLESHOOTING GUIDE</b> .....	<b>31</b>
Fault Code List.....	32
Technical Specifications .....	34
Dimensions (mm).....	34
<b>PRODUCT INFORMATION SHEET</b> .....	<b>35</b>
Technical information.....	39

## SAFETY INSTRUCTIONS

### ■ SAFETY INSTRUCTIONS

FOR YOUR SAFETY, THE INFORMATION IN THIS MANUAL MUST BE FOLLOWED TO MINIMIZE THE RISK OF FIRE OR EXPLOSION, ELECTRIC SHOCK, OR TO PREVENT PROPERTY DAMAGE, PERSONAL INJURY OR LOSS OF LIFE.

EXPLANATION OF THE SYMBOLS:

#### **WARNING!**

THIS COMBINATION OF SYMBOL AND SIGNAL WORD INDICATES A POTENTIALLY DANGEROUS SITUATION WHICH MAY RESULT IN DEATH OR SERIOUS INJURIES UNLESS IT'S AVOIDED.

#### **CAUTION!**

THIS COMBINATION OF SYMBOL AND SIGNAL WORD INDICATES A POTENTIALLY DANGEROUS SITUATION WHICH MAY RESULT IN SLIGHT OR MINOR INJURIES OR DAMAGE TO PROPERTY AND THE ENVIRONMENT.

#### **NOTE!**

THIS COMBINATION OF SYMBOL AND SIGNAL WORD INDICATES A POTENTIALLY DANGEROUS SITUATION WHICH MAY RESULT IN SLIGHT OR MINOR INJURIES.

## **WARNING!**

THIS APPLIANCE CAN BE USED BY CHILDREN AGED FROM 8 YEARS AND ABOVE AND BY PERSONS WITH REDUCED PHYSICAL, SENSORY OR MENTAL CAPABILITIES OR LACK OF EXPERIENCE AND KNOWLEDGE IF THEY HAVE BEEN GIVEN SUPERVISION OR INSTRUCTIONS CONCERNING SAFE USE OF THE APPLIANCE AND IF THEY UNDERSTAND THE HAZARDS INVOLVED.

CHILDREN MUST NOT PLAY WITH THE APPLIANCE.

CHILDREN UNDER 3 YEARS OF AGE SHOULD BE PREVENTED FROM ACCESSING THE APPLIANCE UNLESS THEY ARE UNDER PERMANENT SUPERVISION.

CLEANING AND USER MAINTENANCE CANNOT BE PERFORMED BY CHILDREN WITHOUT SUPERVISION.

IF THE SUPPLY CORD IS DAMAGED, HAVE IT REPLACED BY A QUALIFIED SERVICE CENTRE IN ORDER TO AVOID DANGEROUS SITUATIONS. IT IS PROHIBITED TO USE AN APPLIANCE WITH A DAMAGED SUPPLY CORD.

THE MAXIMUM WEIGHT OF DRY TEXTILES THAT CAN BE USED WITH THE APPLIANCE IS 6KG FOR PLDSI 126 C STEAM OR 7KG FOR PLDSI 147 C STEAM.

THIS APPLIANCE IS INTENDED TO BE USED ONLY IN HOUSEHOLDS AND NOT IN SIMILAR PREMISES, SUCH AS:

- KITCHENETTES IN SHOPS, OFFICES AND OTHER WORKPLACES;
- APPLIANCES USED BY GUESTS IN HOTELS, MOTELS, AND OTHER ACCOMMODATION FACILITIES;
- APPLIANCES USED IN BED AND BREAKFAST FACILITIES;
- APPLIANCES USED IN CATERING AND OTHER SIMILAR NONVENDING ENVIRONMENTS

THIS APPLIANCE IS INTENDED FOR WASHING FABRICS FOR WHICH THE MANUFACTURER HAS RECOMMENDED SUCH TREATMENT.

ALWAYS USE PROGRAMMES ACCORDING TO THE FABRIC TYPE.

THE WASHING MACHINE MIGHT GET DAMAGED WHEN WASHING SHOES.

DO NOT USE TO WASH CARPETS.

USE ONLY DETERGENTS THAT ARE INTENDED FOR WASHING OR DRYING CLOTHES IN AN AUTOMATIC DRUM WASHING MACHINE.

SOFTENERS AND SIMILAR PRODUCTS SHOULD ALWAYS BE USED IN ACCORDANCE WITH THEIR INSTRUCTION FOR USE.



- IF THE SUPPLY CORD GETS DAMAGED, IT MUST BE REPLACED BY THE MANUFACTURER, ITS SERVICE AGENT OR OTHER SIMILARLY QUALIFIED PERSON.

- THE APPLIANCE SHOULD ONLY BE CONNECTED TO THE WATER SUPPLY AND THE DRAIN USING NEW HOSES, NOT USING HOSES THAT HAVE ALREADY BEEN USED.
- THE APPLIANCE SHOULD BE DISCONNECTED FROM THE MAINS BEFORE ANY MAINTENANCE.
- THE POWER CORD PLUG MUST BE CONNECTED TO A GROUNDED THREE-POLE ELECTRIC OUTLET.
- NEVER USE A POWER OUTLET WITH A RATED VOLTAGE THAT IS DIFFERENT FROM THE APPLIANCE'S VOLTAGE.
- DO NOT USE AN EXTENSION CORD TO CONNECT THE APPLIANCE TO THE POWER OUTLET.
- THE APPLIANCE, THE POWER CORD OR THE ELECTRIC OUTLET MUST NOT LIE IN, TOUCH OR BE SUBMERGED IN WATER OR ANY OTHER LIQUID TO AVOID ELECTRICAL HAZARDS.
- THE APPLIANCE MUST NOT STAND ON THE POWER CORD.
- THE POWER CORD MUST NOT BE EXCESSIVELY OR DANGEROUSLY BENT OR COMPRESSED DURING INSTALLATION OR OPERATION.
- THE CONTROLS AND THE DOOR OF THE APPLIANCE ARE NOT INTENDED FOR PLAYING.
- PETS OR CHILDREN COULD CRAWL INTO THE APPLIANCE. THE APPLIANCE SHOULD BE CHECKED BEFORE EACH USE.
- THE GLASS DOOR OF THE APPLIANCE CAN GET HOT DURING OPERATION.
- MAKE SURE THE CHILDREN AND PETS ARE AS FAR AWAY FROM THE APPLIANCE AS POSSIBLE DURING THE OPERATION OF THE APPLIANCE.
- REMOVE ALL PACKAGING MATERIALS AND TRANSPORTATION BOLTS BEFORE USING THE APPLIANCE. OTHERWISE IT MIGHT GET SERIOUSLY DAMAGED.

- DO NOT WASH OR DRY ITEMS THAT HAVE BEEN CLEANED, WASHED, STAINED OR SOAKED IN FLAMMABLE OR EXPLOSIVE SUBSTANCES (SUCH AS WAX, OIL, PAINT, GASOLINE, DEGREASING AGENTS, DRY CLEANING SUBSTANCES, PETROLEUM, ETC.). THIS COULD CAUSE A FIRE OR AN EXPLOSION. THOSE ITEMS SHOULD BE WASHED IN HAND BEFORE USING THEM IN THE APPLIANCE.

## **APPLIANCE INSTALLATION**

- THIS APPLIANCE IS INTENDED FOR INTERIOR USE ONLY.
- THIS APPLIANCE IS NOT INTENDED TO BE USED AS A BUILT-IN APPLIANCE.
- THE ELECTRIC OUTLET THAT THE POWER CORD IS CONNECTED TO MUST BE EASILY ACCESSIBLE AFTER THE APPLIANCE HAS BEEN INSTALLED.
- REMOVE ALL PACKAGING MATERIALS AND SAFETY TRANSPORTATION BOLTS BEFORE USING THE APPLIANCE. OTHERWISE THE APPLIANCE OR ITS SURROUNDINGS MIGHT GET SERIOUSLY DAMAGED.
- THE APPLIANCE, THE POWER CORD OR THE ELECTRIC OUTLET MUST NOT LIE IN, TOUCH OR BE SUBMERGED IN WATER OR ANY OTHER LIQUID TO AVOID ELECTRICAL HAZARDS.
- DISPOSE OF PACKAGING IN A PROPER MANNER.
- DO NOT LIFT OR HANDLE THE APPLIANCE WHEN HOLDING ITS DOOR, CONTROLS, THE UPPER BOARD, HOSES OR POWER CORD.
- THE APPLIANCE MUST BE PLACED ON A FIRM AND LEVEL SURFACE.
- AFTER YOU PLACE THE APPLIANCE, MAKE SURE IT IS LEVEL IN ALL DIRECTIONS USING A SPIRIT LEVEL.
- THE WASHING MACHINE MUST NOT BE INSTALLED IN A BATHROOM OR IN VERY DAMP AREAS, OR IN ROOMS WITH EXPLOSIVE OR CORROSIVE GASES.



- A WASHING MACHINE WITH A SINGLE SUPPLY VALVE MAY ONLY BE CONNECTED TO COLD WATER SUPPLY. IF POSSIBLE, AN APPLIANCE WITH TWO SUPPLY VALVES SHOULD BE CONNECTED TO THE HOT WATER SUPPLY AND THE COLD WATER SUPPLY.

**THESE SAFETY INSTRUCTIONS SHOULD BE READ  
AND FOLLOWED CAREFULLY AND KEPT FOR FUTURE  
REFERENCE.**

### **RISK OF DAMAGING APPLIANCE!**

- YOUR PRODUCT IS ONLY FOR HOME USE AND IS ONLY DESIGNED FOR THE TEXTILES SUITABLE FOR MACHINE WASHING.
- DO NOT CLIMB UP AND SIT ON TOP COVER OF THE MACHINE.
- DO NOT LEAN AGAINST MACHINE DOOR.
- CAUTIONS DURING HANDLING MACHINE:
  1. TRANSPORT BOLTS SHALL BE REINSTALLED TO THE MACHINE BY A SPECIALIZED PERSON.
  2. THE ACCUMULATED WATER SHALL BE DRAINED OUT OF THE MACHINE.
  3. HANDLE THE MACHINE CAREFULLY. NEVER HOLD EACH PROTRUDED PART ON THE MACHINE WHILE LIFTING. MACHINE DOOR CAN NOT BE USED AS THE HANDLE DURING THE CONVEYANCE.
  4. THIS APPLIANCE IS HEAVY. TRANSPORT WITH CARE.
- PLEASE DO NOT CLOSE THE DOOR WITH EXCESSIVE FORCES. IF IT IS FOUND DIFFICULT TO CLOSE THE DOOR, PLEASE CHECK IF THE CLOTHES ARE PUT IN OR DISTRIBUTED WELL.
- IT IS FORBIDDEN TO WASH CARPETS.

## **OPERATING THE APPLIANCE**

- BEFORE WASHING THE CLOTHES AT FIRST TIME, THE PRODUCT SHALL BE OPERATED IN ONE ROUND OF THE WHOLE PROCEDURES WITHOUT THE CLOTHES INSIDE.
- FLAMMABLE AND EXPLOSIVE OR TOXIC SOLVENTS ARE FORBIDDEN. GASOLINE AND ALCOHOL ETC. SHALL NOT BE USED AS DETERGENTS. PLEASE ONLY SELECT THE DETERGENTS SUITABLE FOR MACHINE WASHING, ESPECIALLY FOR DRUM.
- MAKE SURE THAT ALL POCKETS ARE EMPTIED. SHARP AND RIGID ITEMS SUCH AS COIN, BROOCH, NAIL, SCREW OR STONE ETC. MAY CAUSE SERIOUS DAMAGES TO THIS MACHINE.
- PLEASE CHECK WHETHER THE WATER INSIDE THE DRUM HAS BEEN DRAINED BEFORE OPENING ITS DOOR. PLEASE DO NOT OPEN THE DOOR IF THERE IS ANY WATER VISIBLE.
- BE CAREFUL OF BURNING WHEN THE PRODUCT DRAINS HOT WASHING WATER.
- NEVER REFILL THE WATER BY HAND DURING WASHING.
- AFTER THE PROGRAM IS COMPLETED, PLEASE WAIT FOR TWO MINUTES TO OPEN THE DOOR.

## PACKAGING/OLD APPLIANCE



THIS MARKING INDICATES THAT THIS PRODUCT SHOULD NOT BE DISPOSED WITH OTHER HOUSEHOLD WASTES THROUGHOUT THE EU. TO PREVENT POSSIBLE HARM TO THE ENVIRONMENT OR HUMAN HEALTH FROM UNCONTROLLED WASTE DISPOSAL, RECYCLE IT RESPONSIBLY TO PROMOTE THE SUSTAINABLE REUSE OF MATERIAL RESOURCES. TO RETURN YOUR USED DEVICE, PLEASE USE THE COLLECTION SYSTEMS OR CONTACT THE RETAILER WHERE THE PRODUCT WAS PURCHASED. THEY RETURN AND CAN TAKE THIS PRODUCT FOR ENVIRONMENTAL SAFE RECYCLING.

# BEFORE USING THE WASHING MACHINE

## Removing the packaging and inspection

- After unpacking, ensure that the washing machine is undamaged. If in doubt, do not use the washing machine. Contact After-Sales Service or your local retailer.
- Check that the accessories and supplied parts are all present.
- Keep the packaging materials (plastic bags, polystyrene parts, etc.) out of reach of children, as they are potentially dangerous.

## Remove the transport bolts

- The washing machine is fitted with transport bolts to avoid any possible damage to the interior during transport. Before using the machine, it is imperative that the transport bolts are removed.
- After their removal, cover the openings with the 4 enclosed plastic caps.

## Install the washing machine

- Move the appliance without lifting it by the worktop.
- Install the appliance on a solid and level floor surface, preferably in a corner of the room.
- Ensure that all four feet are stable and resting on the floor and then check that the washing machine is perfectly level (use a spirit level).

## Water inlet

- Connect the water supply inlet hose in accordance with the regulations of your local water company.
- Water inlet - Depending on models:
  - Single inlet - Cold water only
  - Dual inlet - Hot and cold water
- Water tap: 3/4 threaded hose connector

## Drain

- Connect the drain hose to the siphon or hook it over the edge of a sink by means of the "U" bend supplied.
- If the washing machine is connected to an integrated drainage system, ensure that the latter is equipped with a vent to avoid simultaneous loading and draining of water (siphoning effect).
- Fix the drain hose securely to prevent scalding during machine drainage.

## Electrical connection

- Electrical connections must be carried out by a qualified technician in compliance with the manufacturer's instructions and current standard safety regulations.
- Data regarding voltage, power consumption and protection requirements is given on the inside of the door.
- The appliance must be connected to the mains by means of a socket with an earth connection in accordance with current regulations. The washing machine must be earthed by law. The manufacturer declines all liability for damage to property or injury to persons or animals due to non-compliance with the directions given above.
- Do not use extension leads or multiple sockets. Make sure the capacity of the socket is powerful enough to drive the machine during heating.
- Before any maintenance on the washing machine disconnect it from the mains supply.
- After installation, access to the mains plug or to disconnection from the mains supply must be ensured at all times via a double-pole switch.
- Do not operate the washing machine if it has been damaged during transport. Inform After-Sales Service.
- Mains cable replacement is only to be carried out by After-Sales Service.
- The appliance must only be used in the household for the prescribed uses.

### **Only use a socket with an earth connection.**

- Do not use extension leads or multi sockets.
- Electric supply must be adequate for the machine's 10 A Current Rating.
- Electrical connections must be made in accordance with local regulations.
- The electrical power cable must be replaced exclusively by a licensed electrician.



## Installation guide



**NOISE, EXCESSIVE VIBRATIONS AND WATER LEAKAGES CAN BE CAUSED BY INCORRECT INSTALLATION.  
NEVER MOVE THE APPLIANCE BY LIFTING IT BY THE WORKTOP.**

- Read this "INSTALLATION GUIDE" before operating.
- Keep this "INSTALLATION GUIDE" for future reference.
- Read the general recommendations about disposing of packaging in the INSTRUCTION FOR USE.

## Transport / Handing

**Never lift the appliance by the worktop when transporting.**

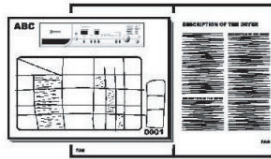
1. Pull out the mains plug.
2. Turn off the tap.
3. Disconnect the inlet and drain hoses.
4. Eliminate all water from the hoses and from the appliance (see "Removing the Filter", "Draining Residual Water")
5. Fit the transport bolts (obligatory)
6. The machine is over 55 kg in weight, two persons are needed to move it.

## Parts supplied

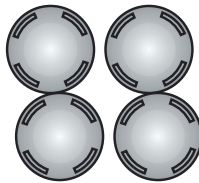
- Package with small items



Instruction for use, installation guide, warranty card (depends on model)



4 plastic caps



- Inlet hose (inside the machine or already installed)  
Cold inlet hose  
Hot inlet hose (if available, depending on models)



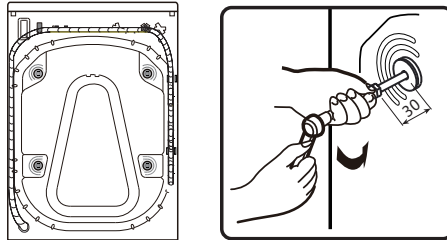
- "U"-bend (inside the machine or already installed)



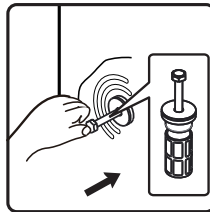
## BEFORE USING THE WASHER, PLEASE REMOVE TRANSPORT BOLTS!

**Important:** Transport bolts which are not removed can cause damage to the appliance.

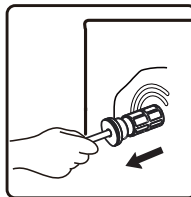
1. Screw off all transportation bolts for approx. 30mm with wrench following the direction of arrow shown (not fully screw it off).



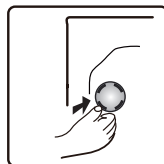
2. Push four transportation bolts on horizontal direction inward and loose transportation bolt.



3. Pull out transportation bolt together with rubber part and plastic part.



4. To ensure safety and reduce noise, you should install the transportation bolt cover supplied with the unit (see the annex accompanying the unit). Lean and place the transportation bolt into hole and press it following the shown direction until it clicks.



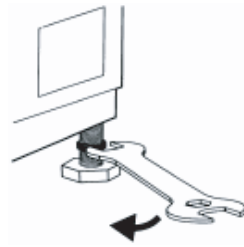
**Important:** Keep the transport bolts and the wrench for future transporting of the appliance and in this case refit the transport bolts in reverse order.



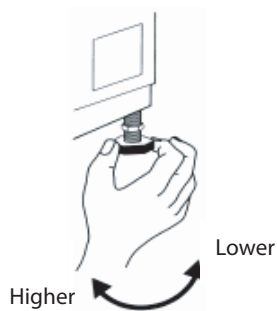
## ADJUSTMENT OF THE FEET

The appliance must be installed on a solid and level floor surface (if necessary use a spirit level). If the appliance is to be installed on a wooden floor, distribute the weight by placing it on a 60x60cm sheet of plywood at least 3cm in thickness and secure it to the floor. If the floor is uneven, adjust the 4 levelling feet as required; do not insert pieces of wood etc. under the feet.

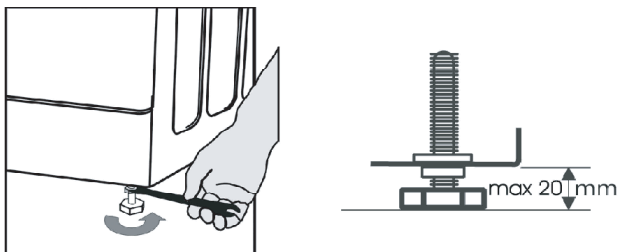
5. Slacken the locknut clockwise (see arrow) using the wrench.



6. Lift the machine slightly and adjust the height of the foot by revolving it.



7. **Important:** Tighten the locknut by turning it anti-clockwise towards the appliance casing.



8. Screw by hand the inlet hose onto the tap, tightening the nut.

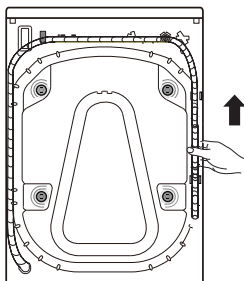
**Attention:**

- No kinks in the hose!
- The appliance **must not** be connected to the mixing tap of an un-pressurized water heater.
- Check water-tightness of connections by turning the tap completely on.
- If the hose is too short, replace it with a suitable length of pressure resistant hose (1000 kPa min)
- Check the inlet hose regularly for brittleness and cracks and replace if necessary.
- The washing machine can be connected without a non-return valve.

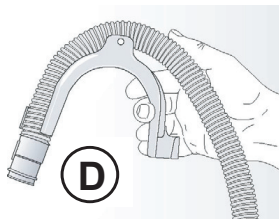
**CONNECT THE DRAIN HOSE**

9. **In case the drain hose is installed as shown below:**

Unhook it only from the right clip (see arrow)

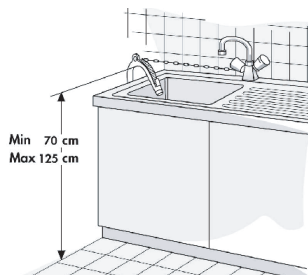


10. Connect the drain hose to the Drain or hook it over the edge of a sink by means of the “U” bend. Fit the “U” bend E, if not already installed, at the end of the drain hose.

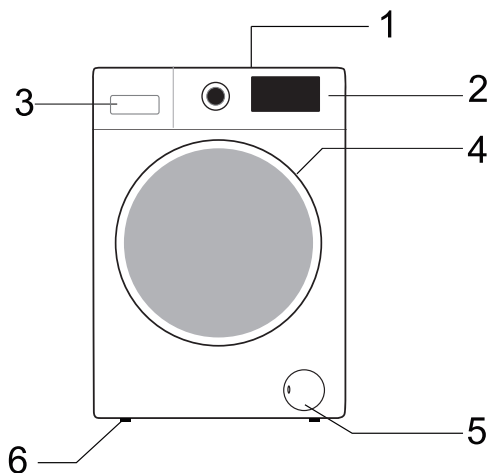


**Notes:**

- Ensure that there are no kinks in the drain hose.
- Secure the hose so that it cannot fall down. After wash phase, machine will drain out hot water.
- Small hand basins are not suitable.
- To make an extension use a hose of the same type and secure the connections with clips.
- Max. Overall drain hose length: 2.50 m.



## DESCRIPTION OF THE WASHING MACHINE




- 1 Worktop
- 2 Control panel
- 3 Detergent dispenser
- 4 Door
- 5 Plinth covering pump access
- 6 Adjustable feet


Control panel layout and appearance will depend on the model.

## BEFORE THE FIRST WASH CYCLE

To remove any residual water used during testing by the manufacturer, we recommend that you carry out a short wash cycle without laundry.

- 1 Open the tap.
- 2 Close the door.
- 3 Pour a little detergent (about 30 ml) into the main wash chamber  of the detergent dispenser.
- 4 Select and start a short programme (see separate quick reference guide).

## ■ Preparation of the washing

1. Sort the laundry according to...
  - Type of fabric / care label symbol  
Cottons, mixed fibres, easy care/synthetics, wool, handwash items.
  - Colour  
Separate coloured and white items. Wash new coloured articles separately.
  - Loading  
Wash items of different sizes in the same load to improve washing efficiency and distribution in the drum.
  - Delicates  
Wash small items (e.g. nylon stockings, belts etc.) and items with hooks (e.g. bras) in a cloth bag or pillow case with zip. Always remove curtain rings or wash curtains with the rings inside a cotton bag.
2. Empty all pockets  
Coins, safety pins etc. can damage your laundry as well as the appliance drum and tub.
3. Fasteners  
Close zips and fasten buttons or hooks; loose belts or ribbons should be tied together.  
Stain removal  
Blood, milk, eggs etc. are generally removed by the automatic enzyme phase of the programme.
  - To remove red wine, coffee, tea, grass and fruit stains etc. add a stain remover to the main wash chamber  of the detergent dispenser.
  - Pre-treat heavily-soiled areas with stain remover if necessary.

### Dyeing

- Only use dyes that are suitable for washing machines.
- Follow the Manufacturer's instructions.
- Plastic and rubber parts of the washing machine can be stained by dyes.

### Loading the laundry

- 1 Open the door.
- 2 Load the articles one at a time loosely into the drum, without overfilling. Observe the load sizes given in the quick reference guide.  
**Note:** Overloading the machine will result in unsatisfactory washing results and creased laundry.
- 3 Close the door.

## ■ Detergents and additives

**Always use high efficiency, low foam detergent for a front load machine.**

### **The choice of detergent depends on:**

- type of fabric (cottons, easy care/synthetics, delicate items, wool).

**Note:** Use only specific detergents for washing wool

- colour
- the wash temperature
- degree and type of soiling

### **Remarks:**

Any whitish residues on dark fabrics are caused by insoluble compounds used in modern phosphate-free powder detergents. If this occurs, shake or brush out the fabric or use liquid detergents. Use only detergents and additives specifically produced for domestic washing machines. When using descaling agents, dyes or bleaches for the pre-wash, make sure that they are suitable for use in domestic washing machines. Descalers could contain products which could damage your washing machine. Do not use any solvents (e.g. turpentine, benzene). Do not wash fabrics that have been treated with solvents or flammable liquids.

### **Dosage**

Follow the dosage recommendations on the detergent pack.

They depend on:

- degree and type of soiling
- size of wash
  - follow the detergent manufacturer's instructions for a full load;
  - half load: 3/4 the amount used for a full load;
  - minimum load (about 1 kg): 1/2 the amount used for a full load;
- water hardness in your area (ask for information from your water company).  
Soft water requires less detergent than hard water.

### **Notes:**

Too much detergent can result in excess foam formation, which reduces washing efficiency. If the washing machine detects too much foam, it may prevent spinning. Insufficient detergent may result in grey laundry in time and also calcifies the heating system, drum and hoses.

### **Where to put detergent and additives**

The detergent drawer has three chambers (fig. A)



### Prewash chamber

- Detergent for the prewash

### Mainwash chamber

- Detergent for the main wash
- Stain remover
- Water softener (water hardness class 4)

### Softener chamber

- Fabric softener
  - Liquid starch
- Pour additives only up to the "Max" mark.

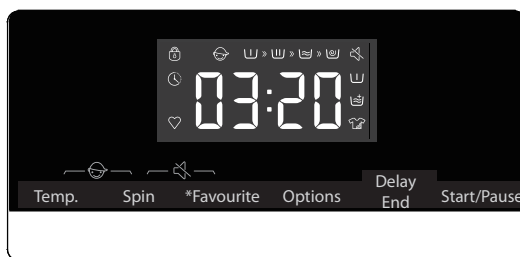
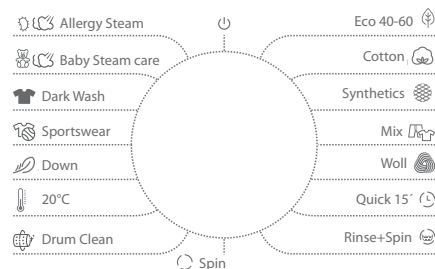
### Notes:

- Keep detergents and additives in a safe, dry place out of the reach of children.
- Liquid detergents can be used for programmes with prewash. However, in this case a powder detergent must be used for the main wash.
- Do not use liquid detergents when activating the "Start Delay" function (if available on your washing machine).
- To prevent dispensing problems when using highly concentrated powder and liquid detergents, use the special detergent ball or bag supplied with the detergent and place it directly inside the drum.
- When using descaling agents, bleaches or dyes, make sure that they are suitable for washing machines. Descalers could contain compounds that can damage parts of your washing machine.
- Do not use any solvents in the washing machine (e.g. turpentine, benzene).

# WASHING MACHINE PROGRAMS

This washing machine is equipped with automatic safety functions which detect and diagnose at an early stage and react appropriately.

## Control Panel (PLDSI 126 C Steam, PLDSI 147 C Steam)




\* Hold 3 sec to save program.





## Table of programs

Program	Care Label	Material / Level of Soiling Washing temperature selected as per the Care Label instruction.
Cotton --, 20°C, 30°C, 40°C, 60°C, 90°C		Heavily and moderately soiled cotton, or linen. For very heavily soiled items select the "Prewash" function.
Synthetics --, 20°C, 30°C, 40°C, 60°C		Moderately soiled synthetics, cotton blended fabrics.
Allergy Steam (2) 40°C, 60°C		It is suitable for high temperature resistant and less fading fabrics, which removes allergens such as pollens, mites and parasites through high temperature steam.
Eco 40-60 (1)	—	Normally soiled cotton laundry.
Wool --, 20°C, 30°C, 40°C		Machine washable wool. (Refer to the washing label attached to the clothing).
Baby Steam Care (2) 40°C, 60°C, 90°C		It is suitable for baby clothes and underwear, etc., which sterilizes and disinfects through high temperature steam.
Dark Wash --, 20°C, 30°C, 40°C, 60°C	—	Dark textiles made of cotton and dark easy-care textiles
Quick 15' --, 20°C, 30°C, 40°C		Cotton, mixed fabrics. Items worn for a short time or newly bought.
Mix --, 20°C, 30°C, 40°C		Mixed loads of moderately soiled cotton and synthetic fabrics.
Sportswear --, 20°C, 30°C, 40°C		Sportswear and leisure wear made from microfibre fabrics.
Down --, 20°C, 30°C, 40°C		Machine-washable items stuffed with synthetic fibres, such as pillows, quilts and bedspreads; also suitable for items stuffed with down.
20°C	—	This program is suitable for cotton clothes with light stains, energy saving.

Drum Clean 90°C	—	Program to remove dirt and bacterial residue that can breed in the machine after it has been used for a period, especially when low temperature washes are used regularly.
Rinse&Spin	—	This program is defaulted to two rinses and spin.
Spin	—	Select the length, and speed, of the spin manually.

Program	Maximum Wash Load kg PLDSI 126 / PLDSI 147	Detergent Compartment		
		Prewash 	Main wash 	Softener 
Cotton --, 20°C, 30°C, 40°C, 60°C, 90°C	6/7	*	Yes	*
Synthetics --20°C, 30°C, 40°C, 60°C	6/7	*	Yes	*
Allergy Steam (2) 40°C, 60°C	2	*	Yes	*
Eco 40-60 (1)	6/7	—	Yes	—
Wool --, 20°C, 30°C, 40°C	2	—	Yes	*
Baby Steam Care (2) 40°C, 60°C, 90°C	2	*	Yes	*
Dark Wash --, 20°C, 30°C, 40°C, 60°C	3/3,5	*	Yes	*
Quick 15' --, 20°C, 30°C, 40°C	1	—	Yes	*
Mix --, 20°C, 30°C, 40°C	3/3,5	*	Yes	*
Sportswear --, 20°C, 30°C, 40°C	2	*	Yes	*
Down --, 20°C, 30°C, 40°C	2	—	Yes	*
20°C	6/7	*	Yes	*
Drum Clean 90°C	—	—	Yes	—
Rinse&Spin	6/7	—	—	*
Spin	6/7	—	—	—



Program	Wash Program Functions							Maximum spin speed rpm
	Delay End 	Prewash 	Extra rinse 	Default rinse times	Intensive 	Spin	Temp.	
Cotton --, 20°C, 30°C, 40°C, 60°C, 90°C	*	*	*	3	*	*	*	1400
Synthetics -20°C, 30°C, 40°C, 60°C	*	*	*	3	*	*	*	1400
Allergy Steam (2) 40°C, 60°C	*	*	*	4	*	*	*	1400
Eco 40-60 (1)	*	—	—	1	—	*	—	1400
Wool --, 20°C, 30°C, 40°C	*	—	*	2	—	*	*	600
Baby Steam Care (2) 40°C, 60°C, 90°C	*	*	*	3	*	*	*	1400
Dark Wash --, 20°C, 30°C, 40°C, 60°C	*	*	*	2	*	*	*	1000
Quick 15' --, 20°C, 30°C, 40°C	*	—	*	1	—	*	*	800
Mix --, 20°C, 30°C, 40°C	*	*	*	2	*	*	*	1400
Sportswear --, 20°C, 30°C, 40°C	*	*	*	2	*	*	*	1000
Down --, 20°C, 30°C, 40°C	*	—	*	2	—	*	*	600
20°C	*	*	*	2	*	*	—	1400
Drum Clean 90°C	*	—	—	1	—	—	—	800
Rinse&Spin	*	—	*	2	—	*	—	1400
Spin	*	—	—	0	—	*	—	1400

\*: Optional Functions

Yes : Detergent Required

—: Cannot be selected

--: selected Temperature of unheated water

(1) Wash performance test programs are: Eco 40-60.

(2) Allergy Steam and Baby Steam Care both washing are suitable to sterilize the color fast clothes.

When you see the door glass with water mist, please don't put your hand on the door glass or open the dispenser to prevent burns.

## Add Detergent, Close the Door and Set the Program

Load the clothes to be washed in the drum and close the door. Add the detergent into the relevant compartments for the type of program you are going to select, Add detergent as described in Detergent and Additives section of User's Operation Manual.

1. Turn on the power.
2. Spin program selection button to required program, "off" must be passed through if pointer's initial position is not "off"»startup.
3. Select washing temperature, spin speed by pressing "Temp"; "Spin" buttons.
4. Press "Options" button to select additional functions.
5. After starting the program, display window displays program length (hours: minutes) and additional function options in sequence.

## Addition function selection

At standby state, press "Options" button to select additional function for current program. Select only one function for each press, and then corresponding icon flashes. After starting up, program cannot be changed.

### Pre-wash

Select the function to conduct pre-wash so as to enhance washing effects and better remove stains. This function is suitable for heavy dirt clothes.

Before inflowing, laundry detergent/ washing powder can be added to pre-wash box, and washing powder must be added to main wash box.

### Extra Rinse

After set the function of rinsing adding, the program runs the rinsing process once again before running the softening, and the total running time of the program increases accordingly.

### Intensive

The function can be selected to prolong washing time, strengthen washing effects and better remove stain.

## Inlet water warning

If tap is not opened, or water pressure is over low, display screen will prompt "F01" to give alarm.

## Drainage warning

If the pipe is squeezed, drainage will not be smooth. In case of failing to completely drain for long time, display screen will prompt "F03" to give alarm.

## Door Lock Icon

After the program starts the Door Lock icon will light up and the door will be locked.

After completing program, door lock unlocks automatically.

During pause, if door opening condition can be met halfway, the door lock will unlock and its indicator light will go out.

When door lock indicator light flashes, door shall not be opened forcibly so as to avoid personal injury.

## Delay End Function

Delay end function allows to run the machine at the consumers' convenience, for example, at night when electricity is cheaper.

- Only under the standby mode, this button is valid for selecting the reservation time.
- After the reservation function is selected, the time will increase 1h when each time the reservation button is pressed. Before reservation, if the program time does not satisfy the integral multiple of 1h, it shall be completed by pressing the reservation key for the first time, and then the time increases 1h when each time the reservation button is pressed. If the reservation is selected, before the program runs, the current reservation can be canceled by turning the button to select other programs.
- The delay time must be longer than the wash program length as the delay time is the time program will finish. For example: if the selected program time is 02:28, the delay time selected must be between 03:00 and 24:00.
- When the reservation process is operated, the icon of 'reservation time' will be on. When the reservation process is finished, the icon of 'reservation time' will be off.

## Favourite

After selecting the program and setting each parameter and starting, long press the Favorite key for 3 s to memorize the selected program, temperature, rotational speed and other related settings, and then the Favorite symbol lamp will be on. Under the circumstance that the Favorite lamp is not on, short press the Favorite key, then the program will be switched to the program memorized last time; and meantime, the temperature, rotational speed and other parameters will automatically change into the parameters memorized last time.

At this moment, if switching the program or pressing other keys, the panel will display a new program and parameters, and the Favorite symbol lamp will be off.

When the user uses it for the first time, if he/she has never long pressed the Favorite key to collect programs, he/she can short press the Favorite key and then the cotton linen program and its default settings will be collected by default.

## Mute Function

When the machine is in the state of holding, pause or operation, press "**Spin+ Favourite**" buttons for 2 seconds, The display will show mute function fault icon. All the buzzing will be turned off except the alarms.

When the machine is in the mute state, press "**Spin+ Favourite**" buttons for 2 seconds until mute function fault icon light off. All the buzzing will be activated.

## Automatic weighting

Washing machine displays “—” after startup, indicating that it is weighing automatically. It will adjust program length (hours: minutes) automatically according to weight of clothes.

## Child Lock

To strengthen the safety of children, this machine is equipped with Child Lock function.

When the programme starts, press “**Temp. +Spin**” button for 2 seconds. Child Lock icon will light up, and then Child Lock is set up. Repeat the same operation, the Child Lock will be released.

- When the Child Lock is set, all function buttons will be shielded.
- When you turn the machine off by rotating the program selection button “Off”, child lock is released.
- After completing program, child lock will automatically unlock.

## To Start the Program

After you have selected your options and placed detergent with in the detergent dispenser, turn on the water tap and press the “**Start/Pause**” button. The screen will display the current program progression with icons from left to right. It also displays the remaining program time.

## To Cancel the Program or Reselect the Options

1. Rotate the program to “**Off**” for 3 seconds to turn off the machine.
2. Select the new program and options.
3. Press “**Start/Pause**” button to turn on the machine without adding any extra detergent.

## End of the Program

The washing machine shows “END” at the end of the program, when the door is unlocked. If the knob is turned to “Off”, the power will be cut off. If there is no button or knob operation within 2 minutes, the program will automatically power off.

## Programme Instructions

1. The eco 40-60 programme is able to clean normally soiled cotton laundry declared to be washable about 40°C to 60°C, together in the same cycle, and that this programme is used to assess the compliance with the EU ecodesign legislation.
2. The power consumption of the off-mode is 0.49W.
3. The most efficient programmes in terms of energy consumption are generally those that perform at lower temperatures and longer duration.
4. Loading the household washing machine up to the capacity indicated by the manufacturer for the respective programmes will contribute to energy and water savings.
5. Correct use of detergent, softeners and other additives. Do not apply excessive detergent. This may affect the washing results adversely.
6. Periodic cleaning, including optimal frequency, and limescale prevention and procedure.
7. Noise and remaining moisture content are influenced by the spinning speed: the higher the spinning speed in the spinning phase, the higher the noise and the lower the remaining moisture content.
8. The product information and QR code are reflected in the energy consumption label, the product registration information can be obtained by scanning the QR code.
9. The information of standard programmes.

Program		Selected Temperature (C)	Rated Capacity (kg)	Maximum temperature in drum (C)	Program duration (h: min)	Energy consumption kWh/cycle	Water consumption litres/cycle	Remaining moisture content (%)	Maximum speedreached rpm
Eco 40-60 full load	6 kg	—	6	44	3:18	0.840	43.0	52.00	1200
	7 kg	—	7	46	3:28	0.970	55.0	51.00	
Eco 40-60 half load	6 kg	—	3	34	2:36	0.450	37.0	53.00	1200
	7 kg	—	3.5	34	2:40	0.450	40.0	53.00	
Eco 40-60 1/4 load	6 kg	—	1.5	26	2:36	0.170	28.0	52.00	1200
	7 kg	—	2	27	2:40	0.180	26.0	53.00	
20°C	6 kg	20	6	19	1:50	0.135	73.0	56.00	1200
	7 kg	20	7	20	1:50	0.140	75.0	56.00	
Cotton	6 kg	60	6	51	3:49	0.980	73.0	56.00	1200
	7 kg	60	7	51	3:49	1.000	73.0	56.00	
Mix	6 kg	40	3	37	1:58	0.460	48.0	45.00	1200
	7 kg	40	3	37	1:58	0.500	50.0	45.00	
Quick 15'	6 kg	40	1	37	0:30	0.270	15.0	65.00	800
	7 kg	40	1	37	0:30	0.280	15.0	65.00	

The values given for programmes other than the eco 40-60 programme are indicative only.

# CARE AND MAINTENANCE

## Appliance exterior and control panel

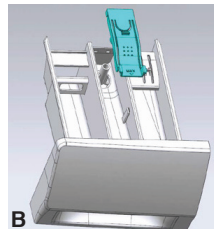
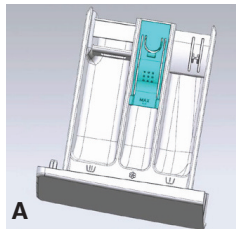
- Can be washed down with a soft, damp cloth.
- A little neutral detergent (non abrasive) can also be used.
- Dry with a soft cloth.

## Door seal

- Clean with a damp cloth when necessary.
- Check the condition of the door seal periodically.

## Detergent dispenser

1. Press the release lever in the main wash compartment downward and remove the drawer (fig."A").
2. Remove siphon cap from the fabric softener compartment (fig."B").
3. Wash all the parts under running water.
4. Refit the siphon in the detergent drawer and fit the drawer back inside its housing.



## Filter

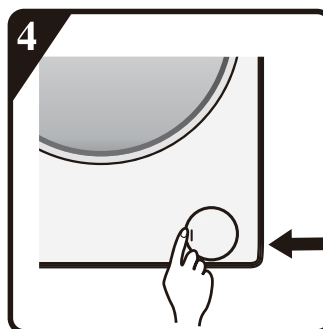
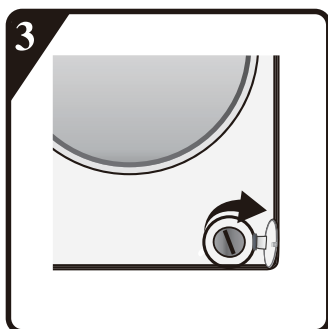
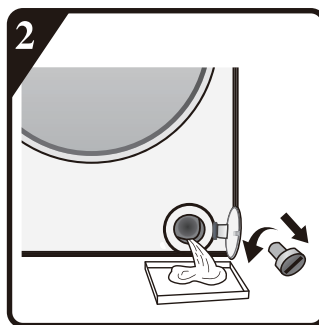
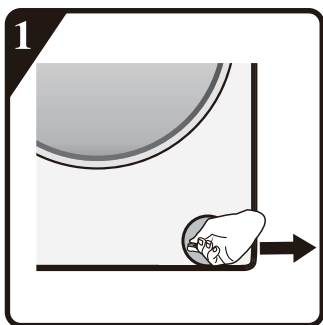
We recommend that you check and clean the filter regularly, at least two or three times a year.

### Especially:

- If the appliance is not draining properly or if it fails to perform spin cycles.
- If the pump is blocked by a foreign body (e.g. buttons, coins or safety pins).

### **IMPORTANT: Ensure that the water has cooled before draining the appliance.**

1. Stop the appliance and unplug it.
2. Insert removal tool like slotted screwdriver into the small opening of bottom baffle, press the bottom baffle downward with much strength and open it.
3. Put a flat container under filter door and then drain with emergency drain pipe (see [draining residual water] for specific operation methods). Then, loosen filter anticlockwise and completely unscrew and remove the filter.
4. Clean the filter and the filter chamber.
5. Check that the pump rotor moves freely.
6. Re-insert the filter and screw it in clockwise as far as it will go.
7. Reinstall the plinth.



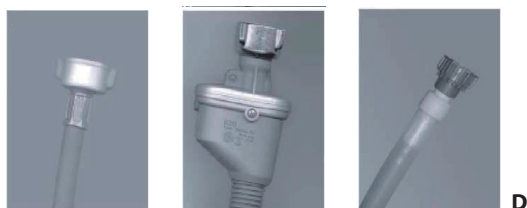
## Water supply hose

Check the supply hose regularly for brittleness and cracks and replace it if necessary using a new hose of the same type(available from After-Sales Service or specialist dealer).

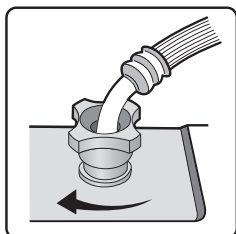
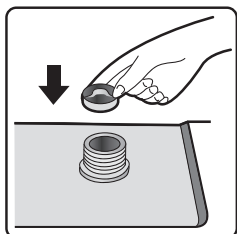
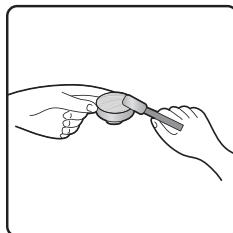
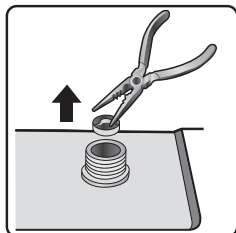
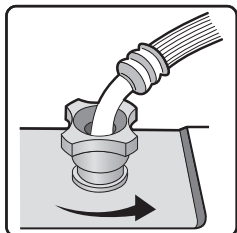
## Mesh filter for water connection

Check and clean regularly.

For washing machines with an inlet hose as shown on pictures "D".



1. Close the tap and loosen the inlet hose on the tap.
2. Clean the internal mesh filter and screw the water inlet hose back onto the tap.
3. Now unscrew the inlet hose on the rear of the washing machine.
4. Pull off the mesh filter from the washing machine connection with universal pliers and clean it.
5. Refit the mesh filter and screw the inlet hose on again.
6. Turn on the tap and ensure that the connections are completely water-tight.





## TROUBLESHOOTING GUIDE

Depending on the model, your washing machine is equipped with various automatic safety functions. This enables faults to be detected in good time and the safety system can then react appropriately. These faults are frequently so minor that they can be resolved within a few minutes.

### **The washing machine will not start, no indicator lamps are on.**

Check whether:

- the mains plug is inserted into the socket
- the wall socket is functioning correctly (use a table lamp or similar appliance to test it).

### **The washing machine will not start... and the “Start/Pause” indicator lamp flashes.**

Check whether:

- the door is properly closed (child safety);
- the “**Start/Pause**” button has been pressed;
- the “**Water tap closed**” indication lights up. Open the water tap and press the “**Start/Pause**” button.

### **The appliance stops during the programme** (varies depending on model)

Check whether:

- the door has been opened and the “**Start/Pause**” indicator lamp is flashing. Close the door and press the “**Start/Pause**” button again.
- Check if there is too much foam inside, machine enters kill-foam routine. The machine will run again automatically after a period.
- the washing machine’s safety system has been activated (see “Fault description table”).

### **Residue from detergent and additives left in the detergent drawer at end of wash.**

Check whether:

- the cover grid of the softener chamber and the separator of the main wash chamber are correctly installed in the detergent dispenser and all parts are clean (see “Care And Maintenance”);
- sufficient water is entering. The mesh filters of the water supply could be blocked (see “Care and Maintenance”);
- the position of the separator in the main wash chamber is adapted to the use of powder or liquid detergent (see “Detergent and Additives”).

### **Machine vibrates during spin cycle.**

Check whether:

- the washing machine is level and standing firmly on all four feet;
- the transport bolts have been removed. Before using the machine, it is imperative that the transport bolts are removed.

### **Final spin results are poor.**

The washing machine has an imbalance detection and correction system. If individual heavy items are loaded (e.g. bathrobes), this system may reduce the spin speed automatically or even interrupt the spin completely if it detects too great an imbalance even after several spin starts, in order to protect the washing machine.

- If the laundry is still too wet at the end of the cycle, remove some articles of laundry and repeat the spin cycle.
- Excessive foam formation may prevent spinning. Use the correct amount of detergent.
- Check that the spin speed selector has not been set to “0”.

### **If your washing machine has a time display: the programme time initially displayed is lengthened / shortened by a period of time:**

This is a normal capacity of the washing machine to adapt to factors that can have an effect on the wash programme time, e.g.:

- excess foam formation;
- load imbalance due to heavy items of laundry;
- prolonged heating time due to reduced inlet water temperature;

Because of influences like these, the time remaining in the programme run is recalculated, and updated if necessary. In addition, during the filling phase, the washing machine determines the load and if necessary adjusts the initial programme time displayed accordingly. During such update periods, an animation appears on the time display.

## **Fault Code List**

<b>Displayed on Display Window</b>	<b>Fault Description</b>
"F01"	Water inflow fault
"F03"	Drainage fault
"F13"	Door lock fault
"F14"	Door unlock fault
"F24"	Overflow or too much foam
else fault code, "F04-F98"	Electronic module fault
"Unb"	Unbalance alarm

### **"F01" displayed on screen**

The machine is not fed with water or insufficient water.

Check:

- Faucet is fully open and has enough water pressure.
- Water inlet pipe is knotted or not.
- Filtering net of water inlet pipe is blocked or not (refer to maintenance and repair).
- Water pipe is frozen or not.

Press **"Start/Pause"** key after fault is removed.

If fault occurs again, please contact with after-sale service (refer to after-sale service.).

### **"F03" displayed on screen**

The washer is not emptied. The washer stops the program being executed. Shut down the machine and disconnect power supply.

Check:

- Drain pipe is knotted or not.
- Filter in drain pump is blocked or not (refer to the cleaning of filter in drain pump)

**IMPORTANT: Ensure that the water has cooled before draining the appliance.**

- the drain hose is frozen up.

Plug in the appliance again.

Select and start the "Spin" programme or push the "**Start/Pause**" button for at least 3 seconds and restart the desired programme.

If the fault occurs again, please contact After-Sales Service (see "After-Sales Service").

#### **Fault code**

The washer stops when the program is running. The display window shows fault code "F13", "F14", "F24", else fault codes from "F04" to "F98" or "Unb".

#### **If faultcode "F13" is shown**

Door lock is abnormal. Start program for 20 sec and unlock the washer door (PTC) to check whether the door is closed.

Open or close it again.

After fault is removed, press "**Start/Pause**" key. If fault occurs again, disconnect power supply and contact with after-sale service.

#### **If fault code "F14" is shown**

Door open fault.

Action: Press "**Start/Pause**" button. The washing machine will try to open the door.

The alarm will not be removed until the door is unlocked. Or, turn the nub to Off for 3 seconds to turn off the machine. Choose the desired programme to start the machine. The alarm will be removed.

#### **If fault code "F24" is shown**

Water level reaches overflow level.

Remove it by pressing "Start/Pause" key and feed water.

Select and start required program. If fault occurs again, disconnect power supply and contact with after-sale service.

#### **If else fault code "F04" to "F98" is shown**

Electronic module fails.

Turn the nub to Off for 3 seconds to turn off the machine.

After fault is removed, press "Start/Pause" key. If fault occurs again, disconnect power supply and contact with after-sale service.

#### **If fault code "Unb" is shown**

Unbalance alarm shall be solved by the following methods

##### 1. Laundry winding

Turn the knob to "off" for 3 seconds for shutdown, open the door, shake the clothes and put them back into the washing machine, then select the single dewatering program to dry again.

##### 2. Too light-weighted laundry

Turn the knob to "off" for 3 seconds for shutdown, open the door, put in one or two towels, and then select the single dewatering program to dry again.

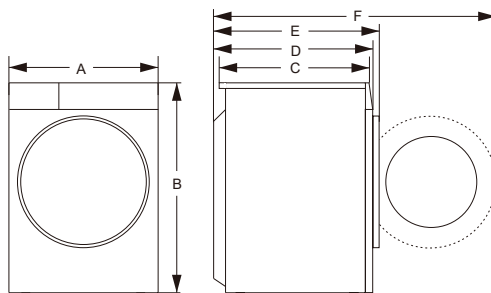
#### **Before contacting After-Sales Service:**

1. Try to remedy the problem yourself (see "Troubleshooting Guide").
2. Restart the programme to check whether the problem has solved itself.
3. If the washing machine continues to function incorrectly, call After-Sales Service.

## ■ Technical Specifications

Description	Value	
Model	PLDSI 126 C steam	PLDSI 147 C steam
Washing Capacity	6.0 kg	7.0 kg
Max.spin speed	1400rpm	
Net Weight	57 kg / 58 kg	
Rated Voltage	220-240V~	
Heating Power	1500W	
Washing Power	200W	

## ■ Dimensions (mm)



Index	Dimension (mm)
A	595
B	845
C	385
D	435
E	465
F	920

# PRODUCT INFORMATION SHEET

## Product Information Sheet

PHILCO 

COMMISSION DELEGATED REGULATION (EU) 2019/2016

**Supplier's name or trademark:** PHILCO

**Supplier's address:** FAST ČR, a.s. U Sanitasu 1621 Říčany 251 01, Czech Republic

**Model identifier:** PLDSI 126 C steam

**General product parameters:** Washmachine

Parameter	Value		Parameter	Value	
Rated capacity ( <sup>a</sup> ) (kg)	6.0		Dimensions in cm	Height	85
				Width	60
				Depth	47
(EEL <sub>w</sub> ) <sup>(a)</sup>	68.9		Energy efficiency class <sup>(a)</sup>	C	
Washing efficiency index <sup>(a)</sup>	1.031		Rinsing effectiveness (g/kg) <sup>(a)</sup>	4.2	
Energy consumption in kWh per cycle, based on the eco 40-60 programme. Actual energy consumption will depend on how the appliance is used.	0.558		Water consumption in litre per cycle, based on the eco 40-60 programme. Actual water consumption will depend on how the appliance is used and on the hardness of the water.	37	
Maximum temperature inside the treated textile <sup>(a)</sup> (°C)	Rated capacity	44	Remaining moisture content <sup>(a)</sup> (%)	52.4	
	Half	33			
	Quarter	26			
Spin speed <sup>(a)</sup> (rpm)	Rated capacity	1200	Spin-drying efficiency class <sup>(a)</sup>	B	
	Half	1200			
	Quarter	1200			
Programme duration <sup>(a)</sup> (h:min)	Rated capacity	3:18	Type	free-standing	
	Half	2:36			
	Quarter	2:36			
Airborne acoustical noise emissions in the spinning phase <sup>(a)</sup> (dB(A) re 1 pW)	74		Airborne acoustical noise emission class <sup>(a)</sup> (spinning phase)	B	

Off-mode (W)	0.49	Standby mode (W)	-
Delay start (W) (if applicable)	3.60	Networked standby (W) (if applicable)	not specified
<b>Minimum duration of the guarantee offered by the supplier:</b> 24 months			
<b>This product has been designed to release silver ions during the washing cycle</b>		NO	
<b>Additional information:</b>			
Weblink to the supplier's website, where the information in point 9 of Annex II to Commission Regulation (EU) 2019/2023 is found: <a href="http://www.philco.cz">www.philco.cz</a>			

(a) for the eco 40-60 program.

# Product Information Sheet



COMMISSION DELEGATED REGULATION (EU) 2019/2016

**Supplier's name or trademark:** PHILCO

**Supplier's address:** FAST ČR, a.s. U Sanitasu 1621 Říčany 251 01, Czech Republic

**Model identifier:** PLDSI 147 C steam

**General product parameters:** Washmachine

Parameter	Value		Parameter	Value	
Rated capacity ( <sup>a</sup> ) (kg)	7.0		Dimensions in cm	Height	85
				Width	60
				Depth	47
(EEI <sub>w</sub> ) ( <sup>a</sup> )	68.3		Energy efficiency class ( <sup>a</sup> )	C	
Washing efficiency index ( <sup>a</sup> )	1.031		Rinsing effectiveness (g/kg) ( <sup>a</sup> )	5.0	
Energy consumption in kWh per cycle, based on the eco 40-60 programme. Actual energy consumption will depend on how the appliance is used.	0.589		Water consumption in litre per cycle, based on the eco 40-60 programme. Actual water consumption will depend on how the appliance is used and on the hardness of the water.	42	
Maximum temperature inside the treated textile ( <sup>a</sup> ) (°C)	Rated capacity	46	Remaining moisture content ( <sup>a</sup> ) (%)	52.3	
	Half	34			
	Quarter	25			
Spin speed ( <sup>a</sup> ) (rpm)	Rated capacity	1400	Spin-drying efficiency class ( <sup>a</sup> )	B	
	Half	1400			
	Quarter	1400			
Programme duration ( <sup>a</sup> ) (h:min)	Rated capacity	3:28	Type	free-standing	
	Half	2:40			
	Quarter	2:40			
Airborne acoustical noise emissions in the spinning phase ( <sup>a</sup> ) (dB(A) re 1 pW)	76		Airborne acoustical noise emission class ( <sup>a</sup> ) (spinning phase)	B	

Off-mode (W)	0.49	Standby mode (W)	-
Delay start (W) (if applicable)	3.60	Networked standby (W) (if applicable)	not specified
<b>Minimum duration of the guarantee offered by the supplier:</b> 24 months			
<b>This product has been designed to release silver ions during the washing cycle</b>		NO	
<b>Additional information:</b>			
Weblink to the supplier's website, where the information in point 9 of Annex II to Commission Regulation (EU) 2019/2023 is found: <a href="http://www.philco.cz">www.philco.cz</a>			

(a) for the eco 40-60 program.



## TECHNICAL INFORMATION

Technical information can be found on the type plate on the inside of the appliance and on the energy label. The QR code, on the supplied energy label, contains a link to register the appliance in the EU Eprel database. Keep the energy label, the instructions for use, together with other documents supplied with the device.

## TESTING INFORMATION

The delivered device is in accordance with EcoDesign and EN 60456:2016, EN 60456:2016/A11:2020, CLC/TS 50707:2020, CLC/TS 50677:2019, EN 50564:2011, EN 60704-1:2010+A11:2012, EN 60704-2 4: 2012+A11:2020, EN 60704-3:2019. Air access requirements for proper operation of the device, the minimum distance from the wall and the dimensions of the device are part of this manual. If you have any further questions, please contact the manufacturer.

## CUSTOMER CARE AND SERVICE

Always use original spare parts.

Model name and serial number can be found on the rating plate. Position of rating plate can be changed without notice.

The original spare parts for some specific components are available for a minimum of 7 or 10 years, based on the type of component, from the placing on the market of the last unit of the model.

When contacting our authorized service, have the model designation, serial number and defect description available.

To download documents, visit [www.philco.cz](http://www.philco.cz).

To report a defect and obtain additional service information, visit <https://philco.cz/podpora-a-servis>.

Subject to change without notice.

## INSTRUCTIONS AND INFORMATION REGARDING THE DISPOSAL OF USED PACKAGING MATERIALS

Dispose of packaging material at a public waste disposal site.

## DISPOSAL OF USED ELECTRICAL AND ELECTRONIC APPLIANCES



The meaning of the symbol on the product, its accessory or packaging indicates that this product shall not be treated as household waste. Please, dispose of this product at your applicable collection point for the recycling of electrical & electronic equipment waste. Alternatively in some states of the European Union or other European states you may return your products to your local retailer when buying an equivalent new product. The correct disposal of this product will help save valuable natural resources and help in preventing the potential negative impact on the environment and human health, which could be caused as a result of improper liquidation of waste. Please ask your local authorities or the nearest waste collection centre for further details. The improper disposal of this type of waste may fall subject to national regulations for fines.

### **For business entities in the European Union**

If you wish to dispose of an electrical or electronic device, request the necessary information from your seller or supplier.

### **Disposal in other countries outside the European Union**

If you wish to dispose of this product, request the necessary information about the correct disposal method from local government departments or from your seller.



This product meets all the basic EU regulation requirements that relate to it.

Changes to the text, design and technical specifications may occur without prior notice and we reserve the right to make these changes.

Original of this user manual is in czech language.

Výrobce/Manufacturer:  
Fast ČR, a.s.  
U Sanitasu 1621  
Říčany 251 01, CZECH REPUBLIC

Distributor:  
FAST PLUS, a.s.  
Vlčie hrdlo 324/90  
821 07 Bratislava, SLOVAKIA

Distributor:  
FAST POLAND Sp. z o. o.  
Kwiatniowa 36  
05-090 Wypędy, POLAND

Distributor:  
FAST HUNGARY Kft.  
H-2310 Szigetszentmiklós  
Kántor utca 10, HUNGARY

**PHILCO**<sup>®</sup> 

**is a pending or registered trademark of Electrolux Home Products, Inc. and used under a license from Electrolux Home Products, Inc.**