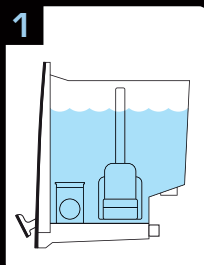


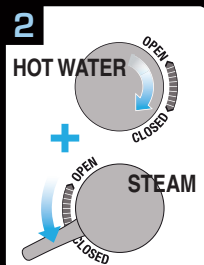
# Quick Start Guide

This Quick Start Guide is designed for first time use. Refer to the Instruction Booklet for more information.

## A Before First Use



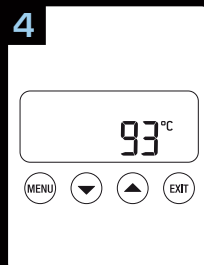
1 Fill water tank



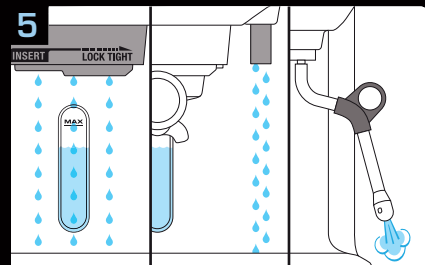
2 Turn Steam Wand & Hot Water to CLOSED position



3 POWER on

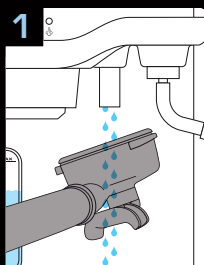


4 STANDBY mode

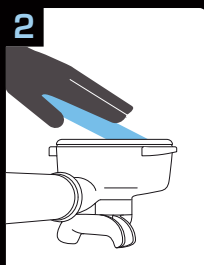


5 Run water through the Group Head, Steam Wand & Hot Water outlet to flush machine

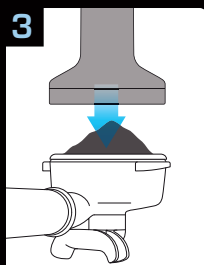
## B Making Espresso



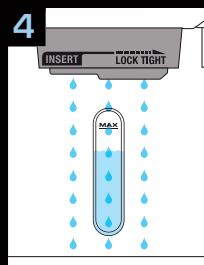
1 Pre-warm filter basket and portafilter



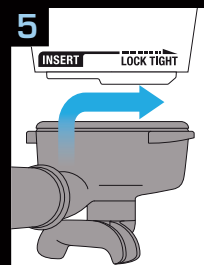
2 Wipe filter basket & portafilter dry



3 Dose & tamp



4 Flush Group Head for a few seconds

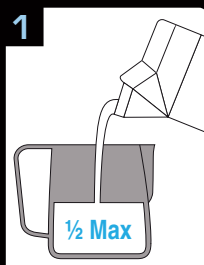


5 Insert & lock portafilter into Group Head

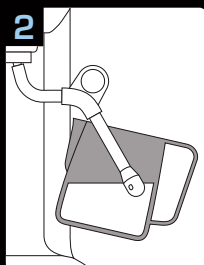


6 Press 1 or 2 CUP button to begin extraction

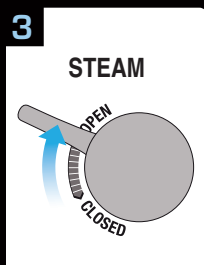
## C Texturing Milk



1 Half fill jug with cold milk to below spout position



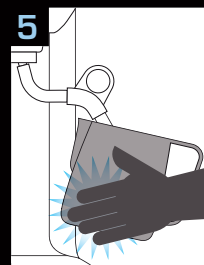
2 Insert steam wand to 3 o'clock position inside jug



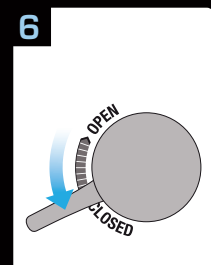
3 Lift Steam Lever to OPEN position



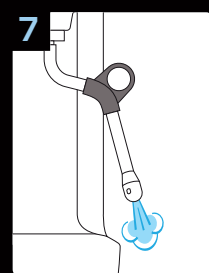
4 Spin milk in whirlpool motion



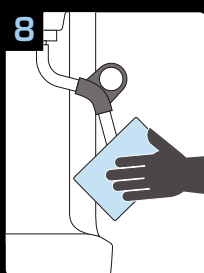
5 Stop when jug is hot to touch



6 Lower Steam Lever to CLOSED position

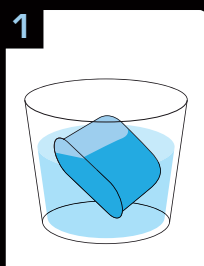


7 Run steam to clear milk from wand after texturing



8 Wipe Steam Wand after each use

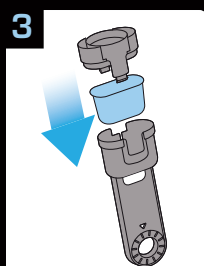
## D Installing Filter



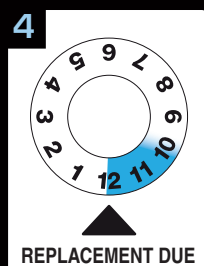
1 Soak the water filter for 5 minutes



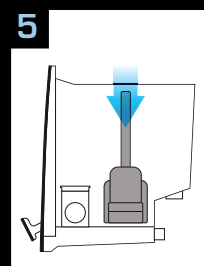
2 Rinse filter & mesh



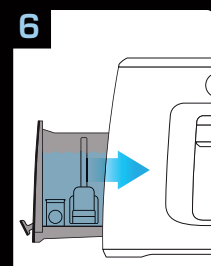
3 Assemble



4 Set date 2 months ahead



5 Install filter in water tank



6 Insert & lock water tank

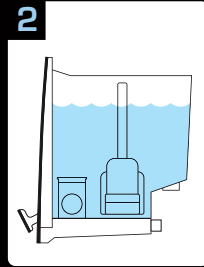
# Cleaning Guide

Maintaining your espresso machine.

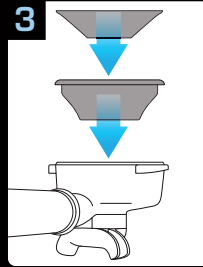
## A Machine Cleaning Cycle



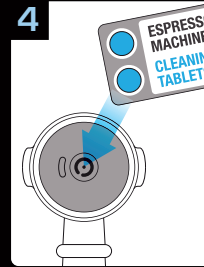
1 Cleaning required



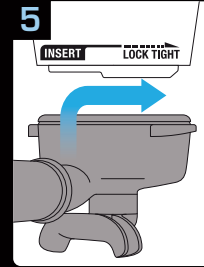
2 Fill tank with water



3 Insert cleaning disc & filter basket into portafilter



4 Place tablet on top



5 Insert & lock portafilter into Group Head



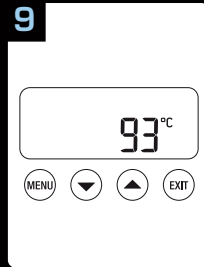
6 Press MENU button and select CLEAN CYCLE



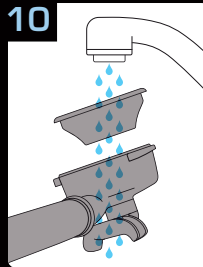
7 Press MANUAL button to start cycle



8 Countdown will begin



9 LCD returns to STANDBY when cycle is finished



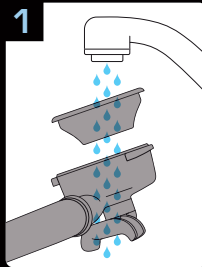
10 Rinse the filter basket & portafilter before use



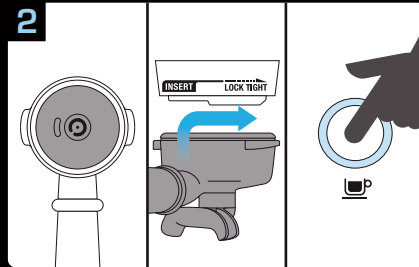
11 Call Customer Service for tablets

To purchase the cleaning tablets contact Catler Customer Service.

## B Daily Cleaning Of Filter Baskets & Portafilter

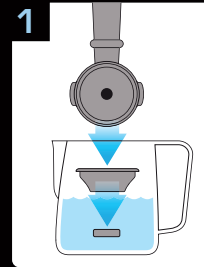


1 Wash & rinse filter baskets & portafilter

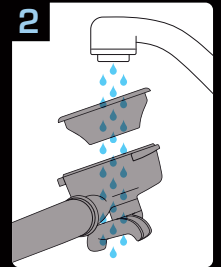


2 Clear water backflush daily. See Instruction Book for further instructions

## C Weekly Cleaning Of Filter Baskets & Portafilter

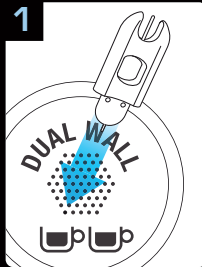


1 Soak in hot water with cleaning tablet



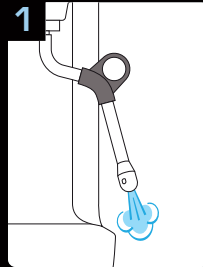
2 Rinse thoroughly

## D Unblocking Dual Wall Filter Baskets

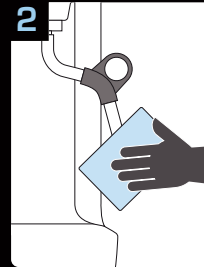


1 Use cleaning tool to unblock. Repeat steps C1-C2

## E Cleaning Steam Wand

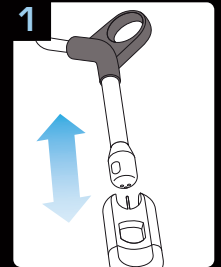


1 Run steam to clear milk from wand after texturing



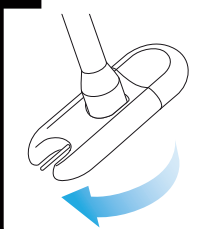
2 Wipe steam wand after each use

## F Steam Wand Blocked?



1 Clean holes with pin

## 2 STILL BLOCKED?

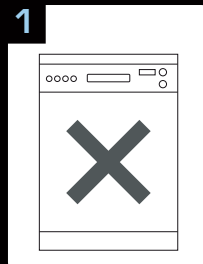


Remove tip



3 Soak tip overnight then re-attach

## G Cautions



1 Do not clean any parts in a dishwasher

## H Questions?



1 Customer Service Centre or refer to the Instruction Book