



EN ■ Food Chopper

READ CAREFULLY AND STORE FOR FUTURE USE.

- This appliance may be used by persons with physical or mental impairments or by inexperienced persons, if they are properly supervised or have been informed about how to use the appliance in a safe manner and understand the potential dangers.
- Children must not use this appliance or play with it. Keep this appliance and the power cord out of reach of children.
- Before connecting this appliance to a power socket, make sure the rated voltage stated on its rating label corresponds to the voltage in your power socket.
- This appliance is designed for household use and is used for chopping foods such as meat, fruits, vegetables, hard or semihard cheese, herbs, nuts with shells removed, etc. Do not use it to process foods that are too hard such as coffee beans, cocoa beans, ice cubes, nutmeg, etc.
- Do not use the appliance in an industrial environment, outdoors or for purposes other than those for which it is intended.



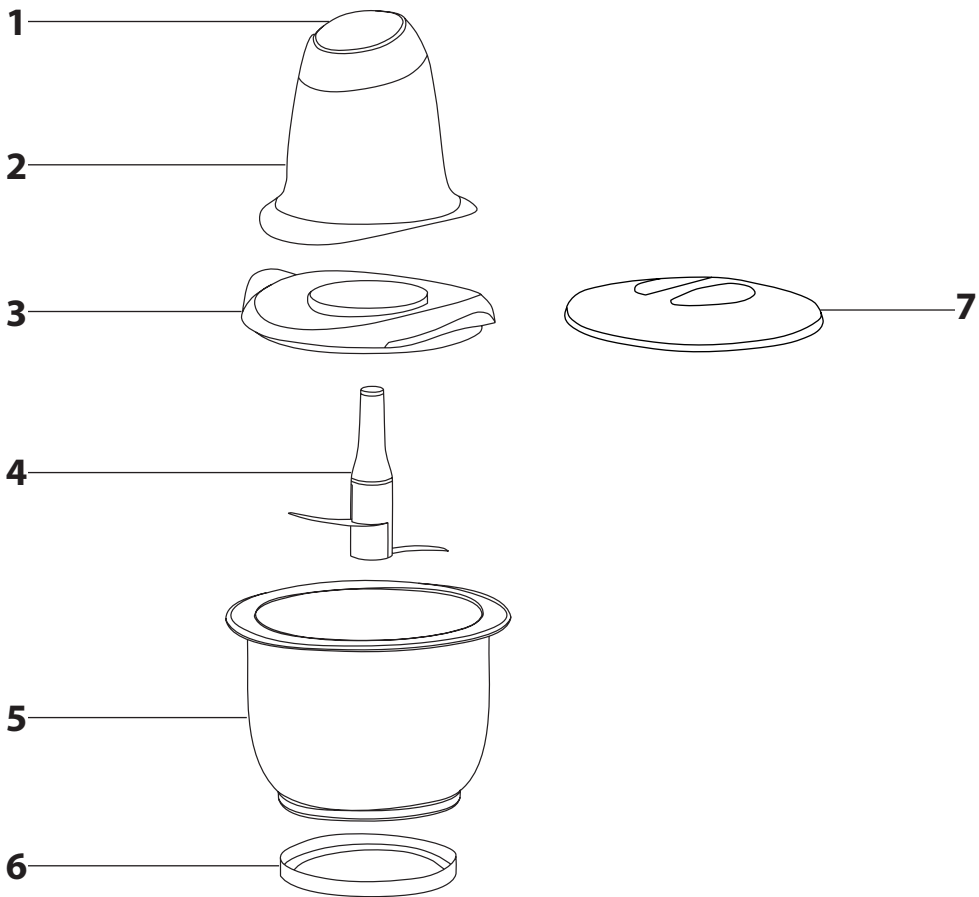
Warning:

Incorrect use may lead to injuries.

- Do not place the appliance on an electric or gas stove or in its vicinity, on the edge of a table or on an unstable surface. Only place the appliance on an even, dry and stable surface.
- Only use the appliance with the original accessories that came with it.
- Make sure that the appliance is correctly assembled before putting it into operation.
- When handling hot foods, pay extra attention. Hot steam or splashing hot foods may cause scalding. Allow hot foods to cool down to a temperature of at least 45°C before putting them into the bowl of the appliance. The operating time of the appliance is 30 seconds. Before turning it on again, allow it to cool down for at least 2 minutes.
- When handling the blade assembly, especially when taking it out of the bowl, when emptying the bowl and when cleaning it, take special care to avoid injury on its blades.
- Do not turn on the appliance when it is empty. The incorrect use of the appliance may negatively affect its lifetime.
- Always turn off the appliance and disconnect it from the power socket if you will not be using it and if you will be leaving it without supervision, before assembly, disassembly, cleaning and moving it.

- Check that the motor unit is turned off, disconnected from the power socket and that the rotating parts have come to a complete stop before removing the motor unit off the bowl.
- Do not submerge the motor unit and its power cord in water or any other liquid, or wash these parts under running water.
- Ensure that the power plug contacts do not come into contact with moisture. Do not place heavy items on the power cord. Make sure the power cord does not hang over the edge of a table or that it is not touching a hot surface.
- Do not disconnect the appliance from the power socket by pulling on the power cord. This could damage the power cord or the socket. Disconnect the power cord from the power socket by pulling on the plug.
- If the power cord is damaged, it must be replaced by an authorised service centre or by another similarly qualified person, this will prevent the creation of a dangerous situation. It is forbidden to use the appliance if it has a damaged power cord.
- Do not use the appliance when it is not functioning properly or showing signs of damage.
- In order to prevent a hazardous situation arising, do not repair the appliance yourself or modify it in any way. Have all repairs performed at an authorised service centre. By tampering with the appliance, you risk voiding your legal rights arising from unsatisfactory performance or quality warranty.

A



- Prior to using this appliance, please read the user's manual thoroughly, even in cases where you have previously familiarised yourself with the operation of similar types of appliances. Only use the appliance in the manner described in this user's manual. Keep this user's manual in a safe place where it can be easily retrieved for future reference.
- We recommend saving the original cardboard box, packaging material, purchase receipt and responsibility statement of the vendor or warranty card for at least the duration of the legal liability for unsatisfactory performance or quality. In the event of transportation, we recommend that you pack the appliance in the original box from the manufacturer.

DESCRIPTION OF THE APPLIANCE

- | | |
|--|--|
| A1 Pulse button
for turning the motor unit
on and off | A4 Blade assembly
A5 1-litre glass bowl
A6 Rubber anti-slip ring
A7 Storage lid |
| A2 Motor unit | |
| A3 Bowl cover | |

BEFORE FIRST USE

1. Take the appliance and its accessories out of the packaging materials.
2. Thoroughly wash the cover **A3**, blade assembly **A4** and bowl **A5** in warm water and neutral kitchen detergent. Then rinse with clean water and allow it to dry naturally or dry it out thoroughly using a wiping cloth. The glass bowl **A5** can also be washed in a dishwasher. Other parts are not intended for washing in a dishwasher..



Attention:

When cleaning the blade assembly **A4**, be very careful not to injure yourself on its sharp edge.

ASSEMBLING AND DISASSEMBLING THE APPLIANCE

1. Before you start assembling or disassembling the appliance, check that the motor unit **A2** is turned off and disconnected from the power socket and that the rotating parts have come to a complete stop.
2. Place the bowl **A5** into the anti-slip ring **A6** and place it on a dry, even and stable surface.
3. Seat the blade assembly **A4** on to the central pin at the bottom of the bowl **A5** and cover the bowl **A5** with the cover **A3**. Push the cover **A3** down along the entire perimeter so that it is securely seated on the edge of the bowl **A5**.
4. Place the motor unit **A2** on to the cover **A3** and check that it has slid in properly. Now the appliance is assembled.
5. To disassemble proceed in the reverse sequence.

OPERATING THE APPLIANCE

1. Assemble the chopper according to the instructions in the chapter Assembling and disassembling the appliance. Place the food into the bowl **A5** after seating the blade assembly **A4** on the central pin. Fill the bowl **A5** to a maximum of $\frac{3}{4}$ of its volume.

2. Connect the power cord to an electrical power socket and press the pulse button **A1** to start the chopper. Hold down the button **A1** for several seconds and then release it. When the button **A1** is released, the chopper will stop. If the food inside is not sufficiently chopped up, run the chopper again for a short time. Short pulse switching will limit excessive pulverisation of the food.



Attention:

The maximum continuous operating time of the appliance is 30 seconds. Then allow it to cool down for 2 minutes.

3. If food sticks to the inside of the bowl **A5**, turn off the chopper and disconnect it from the power socket. Make sure that the blade assembly **A4** has stopped rotating. Take off the motor unit **A2** and the cover **A3**. Clean the inside of the bowl **A5** using a spatula. Assemble the chopper, plug the power cord into a power socket and continue processing food.
4. After you finish using it, disconnect the power cord from the power socket. Make sure that the blade assembly **A4** has stopped rotating. Take off the motor unit **A2** and the cover **A3**. First, carefully take the blade assembly **A4** out of the bowl **A5** and only then empty out its contents.
5. Then clean all used parts according to the instructions in chapter Cleaning and maintenance.

QUICK GUIDE TO PROCESSING INGREDIENTS

- First, cut up the food into smaller cubes of approximately 2×2 cm and only then process with the chopper. With vegetables like onion, it is sufficient to cut them into quarters.

Ingredients	Maximum load	Processing time
Meat	300 g	30 s
Fruit and vegetables	200 g	15 s
Hard and semi-hard cheeses	150 g	10 s
Nuts with shells removed	100 g	15 s
Herbs	50 g	10 s



Note:

The above food processing times are only a reference. The actual processing time depends on the size of the ingredients, their amount and the required final consistency.

CLEANING AND MAINTENANCE

- Before cleaning it, make sure that the appliance is turned off, disconnected from the power socket and that the rotating parts have stopped.
- Disassemble the appliance into its individual parts. Thoroughly wash the cover **A3**, blade assembly **A4** and bowl **A5** in warm water and neutral kitchen detergent. Then rinse with clean water and allow these parts to dry naturally or dry them out thoroughly using a wiping cloth. If the anti-slip ring **A6** becomes soiled, you may wash it in the same way. The glass bowl **A5** can also be washed in a dishwasher. Other parts are not intended for washing in a dishwasher.



Attention:

When cleaning the blade assembly **A4**, be very careful not to injure yourself on its sharp edge.

- To clean the outer surface of the motor unit **A2**, use a cloth lightly dipped in a weak detergent solution. After applying the detergent solution, wipe the surface with a cloth lightly dampened in clean water and then wipe dry.
- Never submerge the motor unit **A2** or the power cord in water or in any other liquid. Do not use solvents, abrasive cleaning products, etc. for cleaning the appliance. Otherwise the surface coat of the appliance may be damaged.

Disposal in other countries outside the European Union.

This symbol is valid in the European Union. If you wish to dispose of this product, request the necessary information about the correct disposal method from the local council or from your retailer.



This product meets all the basic requirements of EU directives related to it.

STORAGE

- When not using the appliance, store it in a dry place out of the reach of children.

TECHNICAL SPECIFICATIONS

Rated voltage range	220–240 V
Rated frequency	50/60 Hz
Rated power input	230 W
Electric shock protection class	II
Noise level	85 dB(A)
Container volume.....	1 l

The declared noise emission level of the appliance is 85 dB(A), which represents a level A of acoustic power with respect to a reference acoustic power of 1 pW.

Explanation of technical terminology

Safety class for electrical shock protection:

Class II – electrical shock protection is provided by double or heavy-duty insulation.

Changes to text and technical parameters are reserved.

INSTRUCTIONS AND INFORMATION REGARDING THE DISPOSAL OF USED PACKAGING MATERIALS

Dispose of used packaging material at a site designated for waste in your municipality.

DISPOSAL OF USED ELECTRICAL AND ELECTRONIC EQUIPMENT



This symbol on products or original documents means that used electric or electronic products must not be added to ordinary municipal waste. For proper disposal, renewal and recycling hand over these appliances to determined collection points.

Alternatively, in some European Union states or other European countries you may return your appliances to the local retailer when buying an equivalent new appliance.

Correct disposal of this product helps save valuable natural resources and prevents potential negative effects on the environment and human health, which could result from improper waste disposal. Ask your local authorities or collection facility for more details.

In accordance with national regulations penalties may be imposed for the incorrect disposal of this type of waste.

For business entities in European Union states

If you want to dispose of electric or electronic appliances, ask your retailer or supplier for the necessary information.