



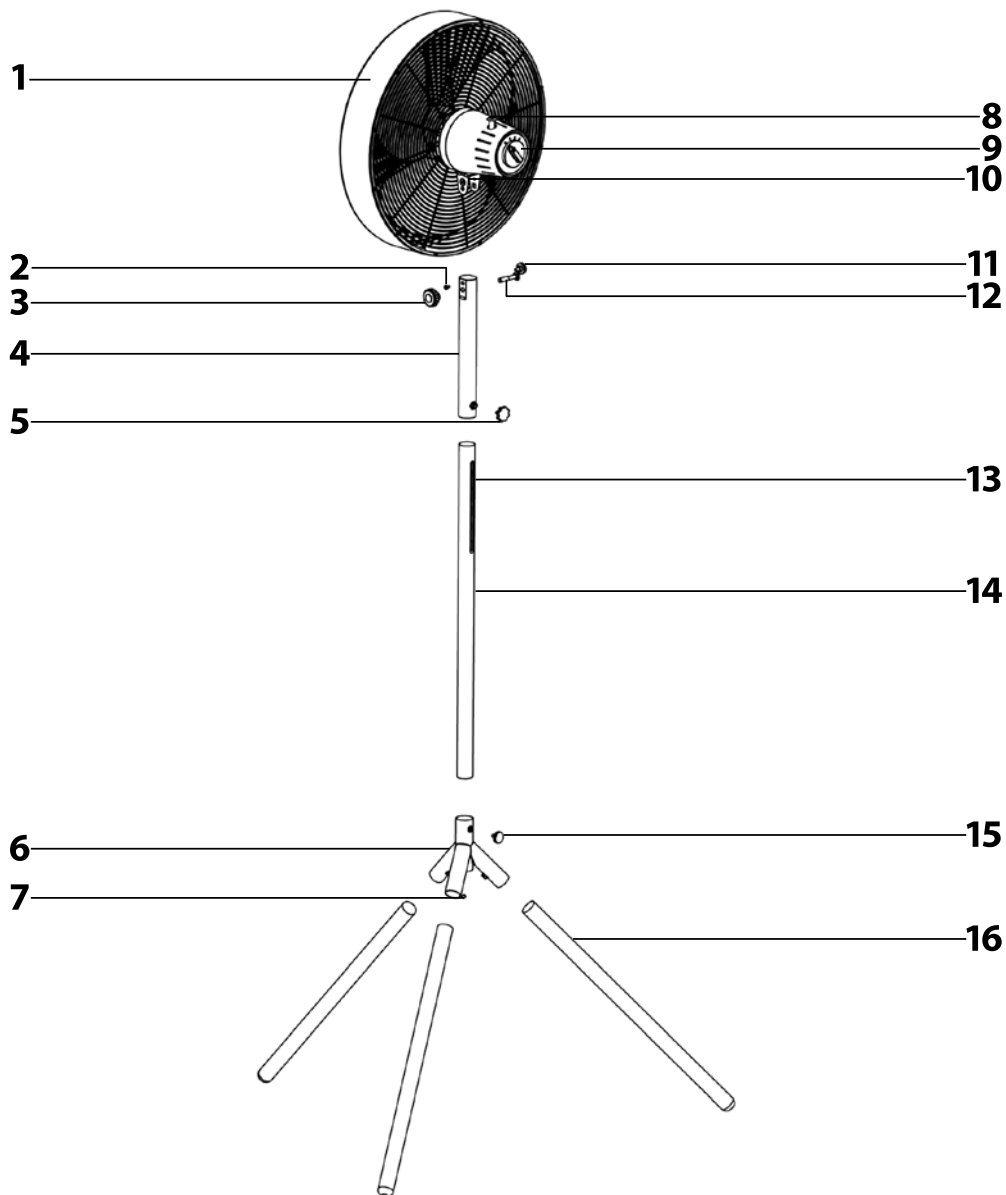
### EN ■ Desktop Fan

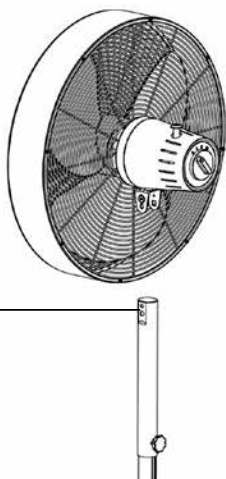
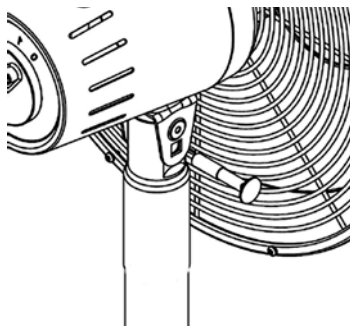
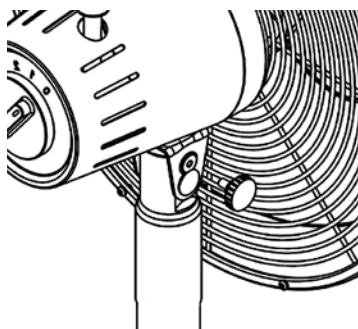
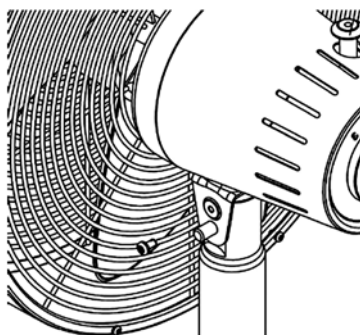
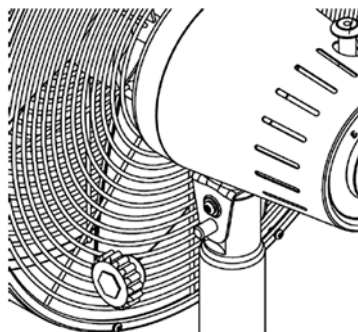
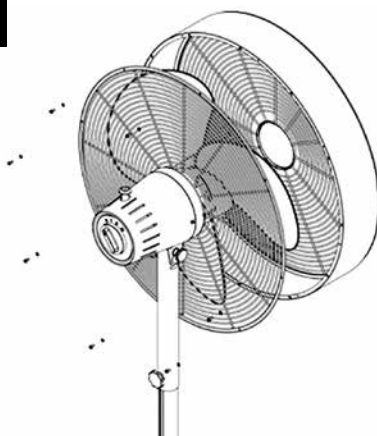
### **READ CAREFULLY AND STORE FOR FUTURE USE.**

- This appliance may be used by children 8 years of age and older and by persons with physical or mental impairments or by inexperienced persons, if they are properly supervised or have been informed about how to use the product in a safe manner and understand the potential dangers. Cleaning and user maintenance must not be performed by children unless they are older than 8 years of age and under supervision. Keep this appliance and the power cord out of reach of children that are younger than 8 years of age. Children must not play with the appliance.
- Before connecting the appliance to a power socket, check that the rated voltage on its rating label matches the electrical voltage in the power socket.
- Connect the appliance only to a properly grounded socket.
- The appliance is designed for use at home, in offices and similar types of areas. Do not use it in very dusty or humid rooms such as laundries or bathrooms, in areas where chemical or explosive substances are stored, in industrial surroundings or outdoors.
- Do not place the appliance in the vicinity of an open flame or appliances that are sources of heat.
- Do not place the appliance on unstable surfaces such as carpets with very long and thick fibres. The appliance may only be used on a dry, stable, smooth and horizontal surface.
- Only use original parts to assemble the appliance. Before starting to assemble the appliance, make sure that it is turned off and disconnected from the power socket.
- Prior to connecting the appliance to a power socket, make sure that the appliance is correctly assembled according to the instructions in this user's manual. Do not start the appliance without the protective grills properly installed.
- Do not touch the appliance with wet or damp hands. This applies especially when it is connected to a power socket.
- Do not cover the appliance with any items while it is running. Never insert fingers or other items through the protective grille.

- Avoid coming into contact with the rotating parts of the appliance.
- Never submerge the appliance or its power cord in water or any other liquid and do not wash it under running water.
- Make sure the power cord does not hang over the edge of a table or that it is not touching a hot surface.
- Always turn off the appliance and disconnect it from the power socket when leaving it without supervision, when not using it and before moving, disassembling or cleaning it.
- Never attempt to remove the protective cover of the motor unit.
- Disconnect the appliance from the power socket by pulling on the plug, never pulling on the power cord. Otherwise, this could damage the power cord or the socket.
- If the power cord is damaged, it must be replaced by an authorised service centre or by another similarly qualified person, this will prevent the creation of a dangerous situation. It is forbidden to use the appliance if it has a damaged power cord.
- Do not use the appliance if it is not working correctly, if it has been damaged or has been submerged in water. To avoid a hazardous situation arising, do not repair the device yourself or modify it in any way. Have all repairs performed at an authorised service centre. By tampering with the appliance, you risk voiding your legal rights arising from unsatisfactory performance or quality warranty.

A



**B****C****D****E****F****G**

- Prior to using this appliance, please read the user's manual thoroughly, even in cases, when one has already familiarised themselves with previous use of similar types of appliances. Only use the appliance in the manner described in this user's manual. Keep this user's manual in a safe place where it can be easily retrieved for future use.
- We recommend saving the original cardboard box, packaging material, purchase receipt and responsibility statement of the vendor or warranty card for at least the duration of the legal liability for unsatisfactory performance or quality. In the event of transportation, we recommend that you pack the appliance in the original box from the manufacturer.

## DESCRIPTION OF THE FAN

- A1** Fan head  
**A2** Locking screw  
**A3** Large knob for setting the tilt angle of the fan head  
**A4** Fan head holder  
**A5** Fan height setting screw  
**A6** Connecting piece  
**A7** Screws – 3 pcs  
**A8** Oscillation toggle switch  
**A9** Fan power and speed setting knob  
 0 – off, I – low speed, II – medium speed, III – high speed  
**A10** Fan head mounts  
**A11** Small knob for setting the tilt angle of the fan head  
**A12** Connecting screw  
**A13** Fan height setting hole  
**A14** Wooden connecting pole  
**A15** Safety screw  
**A16** Wooden legs – 3 pcs

- B1** Top narrow hole



### Note:

The fan is supplied disassembled. Its parts have been designed to fit together properly and to enable you to easily disassemble, clean and store it as required.

## BEFORE ASSEMBLING

- Take the appliance and its accessories out of the packaging materials. Before disposing of the packaging materials, make sure that no part of the appliance is missing.

## ASSEMBLING THE APPLIANCE

- You will need a screwdriver and a hex key to assemble the appliance. These accessories are not included with the device.
- To assemble the base of the fan, you will need connecting piece **A6** and the wooden legs **A16**. Turn the connecting piece **A6** upside down. Using a hex key, loosen the screws **A7** that were screwed in at the factory. With the flat end, insert the 3 wooden legs **A16** into the 3 tubes of the connecting piece **A6** and push them in firmly. Using a hex key, tighten the screws **A7**.
- Place the base of the fan (tripod) on to an even and clean floor, and check that the legs **A16** are not moving or loose in any way.
- Release the safety screw **A15**. Insert the connecting pole **A14** into the top tube of the connecting piece **A6** to enable the safety screw **A15** to be screwed into the small hole in the connecting pole. Tighten the safety screw **A15**.
- Remove the connecting screw **A12** and the large knob **A3** from the fan head holder **A4**. Then release the fan height setting screw **A5** and seat the fan head holder **A4** on to the connecting pole **A14**. Check that the fan height setting screw **A5** is on the same side as the fan height setting hole **A13**. Tighten the fan height setting screw **A5** at the required height.

- Screw the locking screw **A2** and the small knob **A11** out of the fan head mount **A10**.
- There are a total of 4 holes – 2 top and 2 bottom in the top part of the fan head holder **A4**. The locking screw **A2** is inserted into the wide top hole; the small knob **A11** is inserted into the narrow top hole. The bottom holes are round and the connecting screw **A12** is inserted from one side and the large knob **A3** is inserted from the other side.
- When installing the fan head **A1**, it is important to have the fan head holder **A4** turned in the correct direction – see figure B (make sure that the side with the narrow hole B1 is correctly turned). Seat the fan head **A1** on to the holder **A4**. Pull the connecting screw **A12** through the bottom hole through the fan head mount **A10** the fan head holder **A4** – see figure C. Then screw in the small knob **A11** into the narrow hole and tighten it in place – see figure D. Using a screwdriver, screw in the locking screw **A2** – see figure E. Finally, screw in the large knob **A3** – see figure F.

## USING THE FAN

- Place the fan on a horizontal, stable, dry and smooth surface within reach of a power socket. Connect the power cord to a power socket. Before connecting to a power socket, ensure that the fan is correctly assembled.

## SETTING THE SPEED AND TURNING OFF THE FAN

- To set the air flow speed, use knob **A9**. The individual positions of knob **A9** are described below:  
 0 – turn off the fan;  
 I – low air flow speed setting;  
 II – medium air flow speed setting;  
 III – high air flow speed setting.
- When you have finished using the fan, always turn it off by setting knob **A9** to position 0 (off) and disconnect it from the power socket.

## SETTING HORIZONTAL OSCILLATION

- The horizontal oscillation of the fan head **A1** can be set using the toggle switch **A8**. When the fan is running, push down the toggle switch **A8** to start horizontal oscillation. The fan head **A1** will oscillate from side to side at an angle of approximately 80°. To turn off the oscillation, pull the toggle switch **A8** upwards.

## SETTING THE TILT ANGLE OF THE FAN HEAD

- Make sure that the fan is turned off before setting the tilt angle of the fan head **A1**. Loosen the small and large knob, and holding the fan head, set the required tilt angle and then tighten the small and large knob.



### Note:

The fan head **A1** may only be tilted up and down in a limited range. Do not set the tilt angle by force.

## SETTING THE HEIGHT OF THE FAN HEAD

- To set the height of the fan head **A1**, loosen the fan height setting screw **A5**. Slide the fan head mount **A4** in or out. When the fan head **A1** is at the required height, tighten the fan height setting screw **A5**.

## CLEANING AND MAINTENANCE

- Before cleaning it, make sure that the fan is turned off and disconnected from the power socket.
- Keep the fan clean. Before cleaning, turn the fan off and disconnect the power cord from the power socket. Do not disassemble the fan.
- To clean the outer surface of the fan, use a clean, lightly dampened cloth. Then wipe everything so that it is thoroughly dry. Make sure that when cleaning, no water leaks into the motor unit.
- Do not submerge the fan or its power cord in water and do not wash it under running water.
- For cleaning do not use steel wool, cleaning products with an abrasive effect, petrol and other solvents.
- The fan blades may also be cleaned using a vacuum cleaner with a brush nozzle fitted. First it is necessary to remove the front protective grille by removing the screws located on the outer edge of the rear protective grille – see figure G.

STORAGE

- If you will not be using the fan for a longer period of time, store it in a clean, dry location that is out of reach of children.

TECHNICAL SPECIFICATIONS

Rated voltage range .....	220–240 V ~
Rated frequency .....	50/60 Hz
Rated power input .....	50 W
Noise level .....	64 dB(A)
Fan blade diameter .....	40 cm
Maximum air flow of the fan .....	76.10 m³/min
Operation value .....	1.73 (m³/min)/W
Maximum air flow speed .....	2.65 m/s
Standard for measuring the operating value .....	IEC 60879:1986+cor1:1992,
Contact for further information .	FAST ČR, a.s., Černokostelecká 1621, 251 01 Říčany, Czechia

The declared noise emission level for fan model SFN 4080WH is 64 dB(A), which represents a level A of acoustic power with respect to a reference acoustic power of 1 pW.

We reserve the right to change text and technical specifications.

INSTRUCTIONS AND INFORMATION REGARDING THE DISPOSAL OF USED PACKAGING MATERIALS

Dispose of used packaging material at a site designated for waste in your municipality.

DISPOSAL OF USED ELECTRICAL AND ELECTRONIC EQUIPMENT



This symbol on products or original documents means that used electric or electronic products must not be added to ordinary municipal waste. For proper disposal, renewal and recycling hand over these appliances to determined collection points. Alternatively, in some European Union states or other European countries you may return your appliances to the local retailer when

buying an equivalent new appliance.  
Correct disposal of this product helps save valuable natural resources and prevents potential negative effects on the environment and human health, which could result from improper waste disposal. Ask your local authorities or collection facility for more details. In accordance with national regulations penalties may be imposed for the incorrect disposal of this type of waste.

For business entities in European Union states

If you want to dispose of electric or electronic appliances, ask your retailer or supplier for the necessary information.

Disposal in other countries outside the European Union

This symbol is valid in the European Union. If you wish to dispose of this product, request the necessary information about the correct disposal method from the local council or from your retailer.



This product meets all the basic requirements of EU directives related to it.