

SENCOR®

SCF 4200WH

SCF 4201BK



EN ■ Convection heater

Translation of the original manual

This product is suitable only for well insulated areas or for infrequent use.

Information relating to local electric heaters according to Commission Directive EU 2015/1188 is provided in the attachment to this user's manual.

READ CAREFULLY AND STORE FOR FUTURE USE.

- This appliance may be used by children 8 years of age and older and by persons with physical or mental impairments or by inexperienced persons, if they are properly supervised or have been informed about how to use the appliance in a safe manner and understand the potential dangers. Children must not play with the appliance. Cleaning and maintenance performed by the user must not be performed by unsupervised children.
- If the power cord is damaged, it must be replaced by the manufacturer, its service technician or by a similarly qualified person, as this will prevent a dangerous situation from arising. It is forbidden to use the appliance if it has a damaged power cord.
- Children younger than 3 years of age should be prevented from accessing the appliance unless they are under constant supervision.
- Children from 3 to 8 years of age must only turn this appliance on/off under the condition that it is located or installed in its intended normal operating position and that they are under supervision or were informed about the safe operation of the appliance and understand the potential hazards. Children from 3 to 8 years of age must not insert the plug into the power socket, regulate or clean the appliance or carry out maintenance performed by the user.



ATTENTION:

Certain parts of this product may become very hot and cause burns. Special attention should be paid when children and handicapped people are present.



WARNING:

Do not cover.

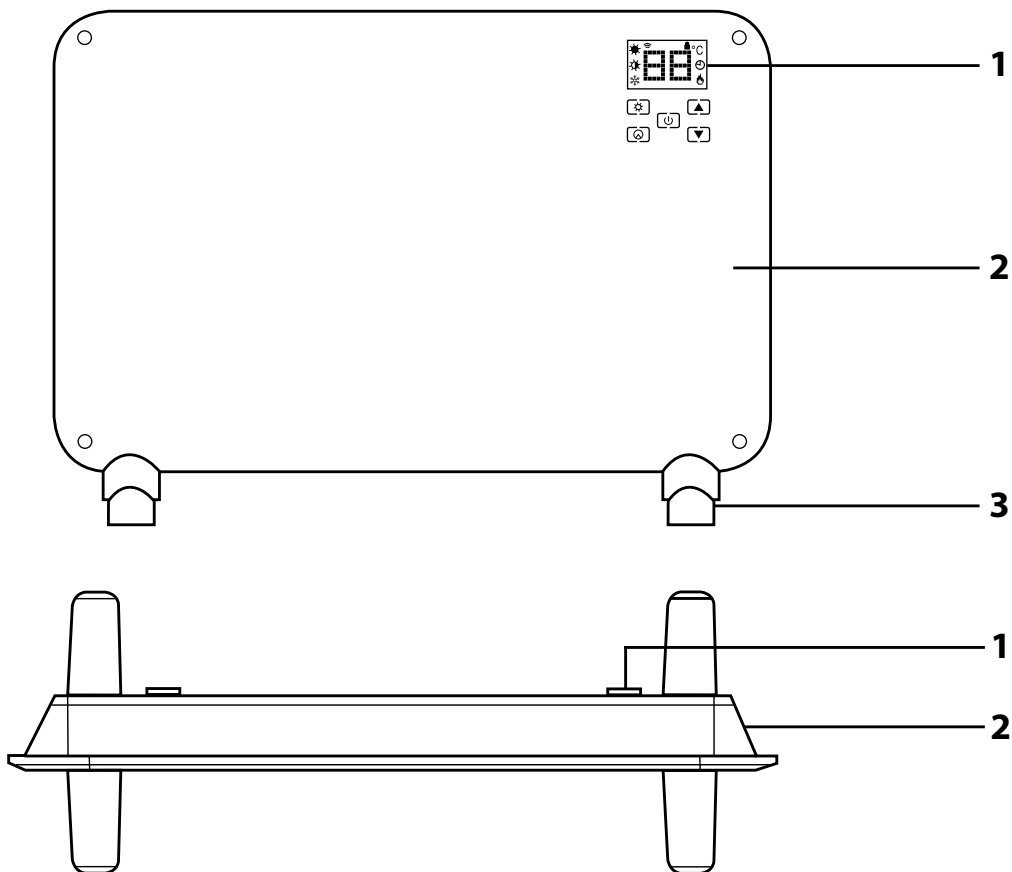
To prevent overheating, do not cover the convection heater.

- This appliance must not be located directly underneath a power socket.
- Do not use this appliance in the direct vicinity of a bath, shower or swimming pool.
- Children must not play with the appliance.
- This appliance is designed for household use only.
- This appliance is not intended for outdoor use or for commercial purposes such as, for example use at a construction site.
- Before connecting the appliance to a power socket, check that the nominal voltage on its rating label matches the voltage in the power socket to which you wish to connect it.

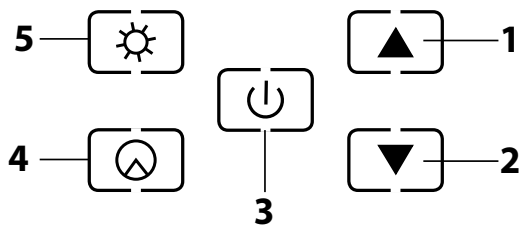
- Connect the appliance only to a properly grounded socket. Do not connect it to an extension cord or two way adapter.
- Do not handle the appliance or its power cord when you have wet hands.
- When installing the appliance, follow the instructions in this user's manual precisely. For a wall-mounted installation of the appliance, only use the supplied screws, or screw recommended and approved by the manufacturer.
- Do not use this appliance in a bathroom, laundry or in rooms with an elevated level of humidity, or place it in such locations, where there is a risk of water being poured on it or where it could come into contact with sprayed water.
- Do not locate the appliance in the vicinity of an open fire.
- Do not use the appliance in rooms with high dustiness or in locations where explosive or flammable substances are used or stored, e.g. petrol, paints, aerosols, etc., or where explosive or toxic fumes could be present, or in industrial surroundings.
- Do not place the appliance on inclining or unstable surfaces such as carpets with very long and thick fibres, couches, etc. Only place the appliance on a horizontal, dry, clean, smooth and stable surface.
- Do not place any objects into the openings of the appliance. This could lead to an electrical short circuit, fire or damage to the appliance.
- During operation there needs to be sufficient free space around the appliance. Leave at least 1 m of free space in front of the appliance, and leave at least 0.5 m free space on its sides.
- Do not use the appliance in the vicinity of curtains, drapes or other flammable materials. During operation, the appliance must be located at least 1 m away from flammable materials.
- We do not recommend using this appliance in a room measuring less than 6 m².
- This appliance must not be used with a programming device, timer switch, a remote control system or any other device which switches the appliance on automatically, because there is a danger of a fire if the appliance is covered or incorrectly located.
- Increased attention and supervision must be paid when the appliance is used in the vicinity of animals.
- The appliance must not be left without supervision when it is in operation. Do not leave the appliance in operation when feeling sleepy or during sleep.
- Do not use the appliance for drying clothing.
- To turn off the appliance, use the On/Off button, then set the main switch to the 0 position. Then disconnect the power cord from the power socket.
- Always turn off the appliance and disconnect it from the power socket when not using it, when leaving it without supervision, before moving or cleaning it and before performing maintenance. Do not move the appliance during operation. Allow the appliance to cool down before moving it, cleaning it or before carrying out maintenance.

- Keep the appliance clean. Clean it according to the instructions in chapter Cleaning and maintenance. Do not perform any maintenance on the appliance apart from the cleaning procedure described in chapter Cleaning and maintenance.
- To prevent potential injury by electrical shock, do not submerge this appliance or its power cord in water or in any other liquid.
- Locate the power cord in such a way that it cannot be tripped over, that it is not in contact with a hot surface or sharp objects. Do not locate it under a carpet, carpet runner, etc.
- Disconnect the appliance from the power socket by gently pulling the plug of the power cord, and not the power cord itself. Otherwise, this could damage the power cord or the socket.
- Do not use the appliance when it is not functioning correctly or after it has fallen on the floor, been submerged in water or is damaged in any other way. Hand it over to an authorised service centre for inspection or repair.
- Never repair the appliance yourself or make any adjustments to it. To prevent a dangerous situation from arising, have all repairs performed at an authorised service centre. By tampering with the appliance, you risk voiding your legal rights arising from unsatisfactory performance or quality warranty.
- The manufacturer is not responsible for any damages caused by the incorrect use of this appliance.

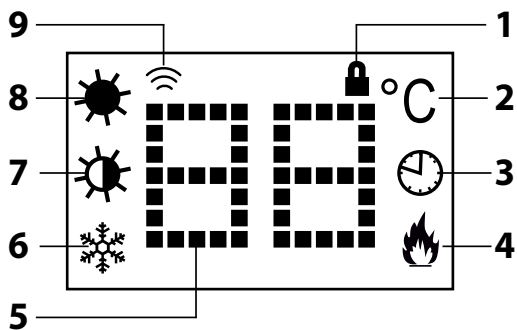
A



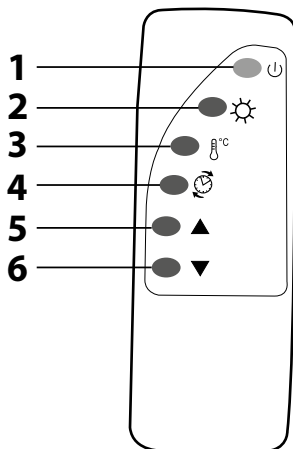
B



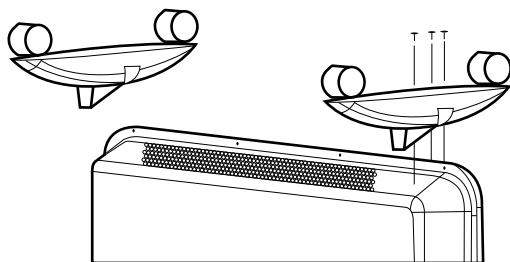
C



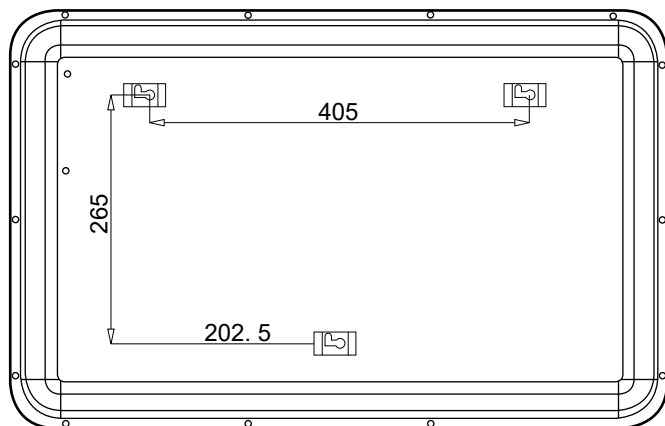
D



E



F



EN Convection heater

User's manual

- Prior to using this appliance, please read the user's manual thoroughly, even in cases, when one has already familiarised themselves with previous use of similar types of appliances. Only use the appliance in the manner described in this user's manual. Keep this user's manual in a safe place where it can be easily retrieved for future use.
- We recommend saving the original cardboard box, packaging material, purchase receipt and responsibility statement of the vendor or warranty card for at least the duration of the legal liability for unsatisfactory performance or quality. In the event of transportation, we recommend that you pack the appliance in the original box from the manufacturer.

DESCRIPTION OF THE APPLIANCE

- | | |
|-------------------------------|---|
| A1 Display | A5 Main power switch (located on the side) |
| A2 Front panel | A6 Wall mounting set (not shown) |
| A3 Travel wheels | |
| A4 Wall mounting hooks | |

DESCRIPTION OF THE CONTROL PANEL

- | | |
|-------------------------|---|
| B1 Button ▲ | B4 Timer button |
| B2 Button ▼ | B5 Operating mode selection button |
| B3 On/Off button | |

DESCRIPTION OF THE DISPLAY

- | | |
|--|--|
| C1 Child lock icon | C6 Anti-frost mode icon |
| C2 °C icon | C7 Low heating power mode icon |
| C3 Timer icon | C7 High heating power mode icon |
| C4 Heating icon | C9 WiFi icon |
| C5 Temperature or timer display | |

DESCRIPTION OF THE REMOTE CONTROL

- | | |
|---|--------------------------------|
| D1 On/Off button | D4 Timer setting button |
| D2 Operating mode setting button | D5 Plus (+) button |
| D3 Temperature setting button | D6 Minus (-) button |

BEFORE FIRST USE

- Before first use, take the appliance and its accessories out of the packaging material and remove all promotional labels and stickers. Check that neither the appliance nor any of its parts is damaged.

INSTALLATION

- The convection heater may be used as a mobile heat source (necessary to install the travel wheels **A3**) or it may be mounted on a wall (travel wheels **A3** must be removed).



Warning:

Before any type of installation, always make sure that the power plug is disconnected from the power socket.

Installing the travel wheels

- Put a blanket or another soft underlay on the floor. Then place the convection heater upside down on to this blanket.
- On the underside of the convection heater there are three drilled holes on either side. Align these holes with the holes in the travel wheels **A3** and, using the supplied self-tapping screws, screw them to the underside of the convection heater – see figure E. Tighten securely. Check that the travel wheels **A3** are correctly attached to the convection heater.
- Turn the convection heater over and carefully put it down on the travel wheels **A3**. Check that the wheels move freely and that they are not blocked in any way.

Wall mounted installation

- Before mounting the convection heater on a wall, it is important that you check that the installation location has no wires, conduits, pipes, etc. in the wall.
- Prior to installation, also check that the installation location is at a sufficient distance from the power socket.



Warning:

Only use the supplied set of screws and dowels for the installation. Under no condition should dowels and screws be used that have a different diameter, different specifications and which are not approved by the manufacturer as suitable for the installation of this type of product.

- Drill two holes of 8 mm diameter 40 mm deep into the wall as shown in figure F.
- Insert a plastic dowel into each of the drilled holes. Using a screwdriver, secure the screws and leave their heads protruding out approximately 6 mm.
- Put the convection heater on to the wall by sliding the screw heads into the holes on the hanging hooks **A4**.



Warning:

The convection heater must be installed at least 15 cm above the ground and 50 cm from the ceiling. The convection heater must always be installed horizontally. Any electrical installations must be performed by a qualified electrician. The convection heater must not be installed behind doors or in an outdoor environment.

USING THE CONVECTION HEATER

Inserting batteries into the remote control

- Remove the battery compartment cover located on the underside of the remote control. Insert 2x type AAA 1.5V batteries (batteries not included) Ensure that the correct polarity is adhered to as marked on the bottom of the battery compartment. Put the cover back on.
- When replacing batteries, proceed in the same manner. Always replace both batteries at the same time. Avoid using a combination of new and old batteries or batteries of various types.
- If you wish to use the remote control, point it at approximately the level of the display **A1**. The maximum signal range is 6 m. If the remote control is positioned in such a way that obstacles prevent the transmission of the signal, then the signal may not be transmitted at all.



Note:

When not using the remote control for an extended period of time, remove the batteries from the remote control. Never put the batteries in a fire, short circuit them or damage them in any way. Dispose of them ecologically at the end of their lifetime. Never throw batteries out with communal waste.

Turning on / off

- Prior to first use, check that the voltage in your power socket corresponds to the voltage on the rating label.
- Insert the power plug into a power socket.
- Set the main switch **A5** to position I (On). A sound is made, the display **A1** is lit and the temperature is shown.
- To turn on the convection heater, press button **B3** on the convection heater or button **D1** on the remote control.
- The icon of the last set operating mode will be shown on the display **A1**.
- When you have finished using it, press the On/Off button **B3** on the convection heater or button **D1** on the remote control, and the convection heater will turn itself off, however, it will remain in stand-by mode. To completely turn off the convection heater, set the main switch **A5** to position 0 (Off) and disconnect the power plug from the power socket.



Note:

Upon first use or after it has not been used for an extended period of time, a slight odour may be sensed or a small amount of smoke may be emitted from the convection heater. This is completely normal and will quickly disappear.

Child safety lock

- The child safety lock function enables the control panel to be locked and prevents accidental changes to your settings.
- To turn on the lock function, hold down button ▲ until the child safety lock icon **C1** appears on the display **A1**. All the control buttons will be disabled.
- To cancel the child safety lock function, hold down button ▲ until the child safety lock icon **C1** disappears from the display **A1**.

Selecting an operating mode

- The convection heater has three operating modes: low heating power mode (input 750 W), high heating power mode (input 1500 W) and an Anti-Frost mode.
- Press button **B5** on the convection heater or button **D2** on the remote control and then use buttons ▲/▼ on the convection heater or the +/- buttons on the remote control to select the required operating mode. The icon of the selected mode (**C6**, **C7** or **C8**) will be lit on the display **A1**.



Note:

If also the heating icon **C4** is lit on the display **A1**, this means that the convection heater is running and is heating to the set temperature. As soon as the set temperature is reached, the heating icon **C4** will turn off and only the icon of the selected operating mode will remain lit.

Setting the temperature

- Press button **B5** on the convection heater twice or button **D3** on the remote control once. The temperature digits will start flashing. Set the temperature of the selected mode using the ▲/▼ buttons on the convection heater or the +/- buttons on the remote control. Your settings are saved when the temperature digits stop flashing. You can set the temperature in the range from 5 to 50 °C.

Setting the timer

- While the convection heater is running, press button **B4** on the convection heater or button **D4** on the remote control. The timer icon **C3** will be shown on the display **A1** and the timer digits "00" will start flashing. Set the convection heater operating time using the ▲/▼ buttons on the convection heater or the +/- buttons on the remote control. Your settings are saved when the timer digits stop flashing. The timer icon **C3** will remain lit on the display **A1**. The set time in hours will start counting down on the display **A1**. When the set time has elapsed, the convection heater will turn off and switch to the stand-by mode.
- The operating time can be set in the range from 1 to 24 hours.

- If you need to cancel the timer, press button **B4** on the convection heater or button **D4** on the remote control. The timer digits will start flashing. Using the **▲/▼** buttons on the convection heater or the **+/-** buttons on the remote control, set "00". Your settings are saved when the timer digits stop flashing. The timer icon **C3** on the display **A1** will turn off.



Note:

The convection heater will start running in the last selected operating mode and temperature. If you need to change the operating mode or temperature, proceed according to the instructions in part "Selecting an operating mode" and "Setting the temperature". The mode and temperature can be changed at any time while the timer is running.

Delayed start

While the convection heater is off, press button **B4** on the convection heater or button **D4** on the remote control. The timer icon **C3** will be shown on the display **A1** and the timer digits "00" will start flashing. Use the **▲/▼** buttons on the convection heater or the **+/-** buttons on the remote control to set the time after which the convection heater is to turn on. Your settings are saved when the timer digits stop flashing. The timer icon **C3** will remain lit on the display **A1**. The set time in hours will start counting down on the display **A1**. After the set time has elapsed, the convection heater will automatically turn on in the last selected mode and temperature.

The delayed start can be set in the range from 1 to 24 hours.

If you need to cancel the timer, press button **B4** on the convection heater or button **D4** on the remote control. The timer digits will start flashing. Using the **▲/▼** buttons on the convection heater or the **+/-** buttons on the remote control, set "00". Your settings are saved when the timer digits stop flashing. The timer icon **C3** on the display **A1** will turn off.

Controlling the convection heater using a smartphone

- Thanks to the "TuyaSmart" application, you can also control the convection heater directly from your mobile phone.
- Install the "TuyaSmart" application on to your smartphone. The application is available for operating systems iOS (iTunes) and Android (Google Play).

google

Itunes



- In order to control the convection heater using the installed application, WiFi must be turned on. To turn on WiFi, hold down the On/Off button **B3** for approximately 5 seconds. The WiFi icon **C9** will start flashing. If the WiFi icon **C9** flashes quickly, this indicates a fast connection; if it flashes slowly, this indicates a compatible connection. To toggle between the fast and compatible connection, hold down the button **B3** for approximately 5 seconds. When connecting for the first time, we recommend the fast connection, i.e. icon **C9** flashes quickly.



Note:

Turning on WiFi and changing the speed can only be performed using button **B3** on the convection heater. In this case, the remote control will not function.

- Open the "TuyaSmart" application and log in.
- Click on "Add Device" and select "Heater" from the list.
- In the next step, you will be requested to turn on the convection heater and to check whether you have a fast WiFi connection. Confirm by tapping on the respective icon.
- Now enter the password for your WiFi network and confirm. Wait until a connection is established.
- Then click "Done" and you will be able to control your convection heater via this application in your smartphone.
- The WiFi icon **C9** will always be lit when a successful connection is established.



Note:

In the event that the connection fails, click on "AP Mode" (application mode) and confirm compatible connection instead of fast connection.



Note:

Unlike in the basic convection heater controls described above, when the application is used it will also be possible to set a weekly timer. This timer is only available in the application. Set the weekly timer according to the instructions in the application.

Thermal protection

- The appliance is equipped with a thermal fuse that automatically turns it off upon overheating.
- Should such a situation occur, turn the appliance off and disconnect it from the power socket. Then allow it to cool down for at least 15 minutes.
- Before you put the appliance back into operation, check that its vents are not blocked.
- If you are unsuccessful putting the appliance back into operation, please contact an authorised service centre.

CLEANING AND MAINTENANCE

- Disconnect the power plug from the power socket and allow the appliance to cool down before cleaning it.
- For cleaning, do not use cleaning products with an abrasive effect, solvents, etc. that could damage the appliance.



Warning:

To prevent the risk of injury by electrical shock, do not submerge the appliance, power cord or power plug in water or any another liquid.

- Keep the appliance in a clean condition. Clean the appliance regularly to ensure dust does not accumulate inside.
- To clean the outer surface of the of the appliance, use a clean, dry cloth. To remove dust from the outer surface, you may also use a vacuum cleaner.

Storage

- When not using the appliance for an extended period of time, disconnect the power plug from the power socket, allow the appliance to cool down and clean it according to the instructions in chapter "Cleaning and maintenance".
- Before storing it, check that the appliance is clean and dry.
- Store the appliance in a dry, clean and well-ventilated location not exposed to extreme temperatures and out of children's reach.

TECHNICAL SPECIFICATIONS

Rated voltage range.....	220 – 240 V~
Rated frequency.....	50/60 Hz
Rated power input.....	1,500 W
Temperature range.....	5 – 50 °C
Protection class.....	IP24

We reserve the right to change text and technical specifications.

INSTRUCTIONS AND INFORMATION REGARDING THE DISPOSAL OF USED PACKAGING MATERIALS

Dispose of used packaging material at a site designated for waste in your municipality.

DISPOSAL OF USED ELECTRICAL AND ELECTRONIC EQUIPMENT



This symbol on products or original documents means that used electric or electronic products must not be added to ordinary municipal waste. For proper disposal, renewal and recycling hand over these appliances to determined collection points. Alternatively, in some European Union states or other European countries you may return your appliances to the local retailer when buying an equivalent new appliance.

Correct disposal of this product helps save valuable natural resources and prevents potential negative effects on the environment and human health, which could result from improper waste disposal. Ask your local authorities or collection facility for more details.

In accordance with national regulations penalties may be imposed for the incorrect disposal of this type of waste.

For business entities in European Union states

If you want to dispose of electric or electronic appliances, ask your retailer or supplier for the necessary information.

Disposal in other countries outside the European Union.

This symbol is valid in the European Union. If you wish to dispose of this product, request the necessary information about the correct disposal method from the local council or from your retailer.



This product meets all the basic requirements of EU directives related to it