



FZS 2306-E

Electric string trimmer

USER'S MANUAL

Thank you for purchasing this electric string trimmer. Before you start using it, please, carefully read this user's manual and save it for possible future use.

TABLE OF CONTENTS

1. GENERAL SAFETY REGULATIONS	4
2. EXPLANATION OF THE INSTRUCTION LABELS ON THE MACHINE	5
3. SAFETY INSTRUCTIONS.....	7
4. DESCRIPTION OF THE POWER TOOL.....	8
5. ASSEMBLY	9
6. STARTING THE TRIMMER.....	11
7. CUTTING	12
8. MAINTENANCE	14
9. DISPOSAL.....	14
10. DECLARATION OF CONFORMITY.....	15
11. TECHNICAL SPECIFICATIONS.....	16

1. GENERAL SAFETY REGULATIONS

Important safety notice


- ✿ Carefully unpack the product and take care not to throw away any part of the packaging until all the product parts have been identified.
- ✿ Keep the product in a dry place out of reach of children.
- ✿ Read all warnings and instructions. Failure to comply with the warnings and instructions may lead to electric shock, fire and/or serious injuries.

Packaging

The product's packaging prevents damage during transport. This packaging is a resource and can be recycled.

User manual

Before starting to work with the machine, please read the following safety regulations and instructions for use. Get familiar with the controls and correct use of the equipment. Keep the user's manual in a safe place for easy future reference. Save the original packaging, including the internal packing material, guarantee card and proof of purchase receipt for at least the time of the guarantee. If you need to transport this power tool, pack it in the original cardboard box for maximum protection during shipping or transport (e.g. when moving or when you need to send this power tool to a service centre for repair).

 **Note:** If you hand over the appliance to somebody else, do so together with this user's manual. Make sure you use the appliance properly by following the instructions in the included User manual. The user's manual also contains operating, maintenance, and repair instructions.

The manufacturer assumes no responsibility for accidents or damages arising from failure to comply with these instructions.

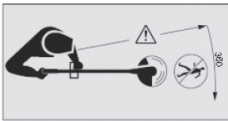
2. EXPLANATION OF THE INSTRUCTION LABELS ON THE MACHINE



Warning!



Read the user's manual before using.



Keep other persons at a sufficient distance!



Do not use in rain or in wet conditions.



Always wear eye protection.



Use protective gloves when working.



Use solid insulating work footwear.



Use ear protection.



In case of damage to the power cord, disconnect the tools from the mains immediately.



Be careful about items thrown off by the appliance. Keep the nearby standing persons at a safe distance



Be careful not to be hit by deflect objects.

3. SAFETY INSTRUCTIONS

⚠ ATTENTION!

Adhere to safety rules when using this power tool. For your safety and the safety of other person, please read these instructions before using this appliance. Please keep these instructions for possible future use.

- * Wear safety glasses while working with this appliance.
- * Wear safety gloves while working with this appliance.
- * Do not expose this appliance to rain or high moisture.
- * Get familiar to the operation and correct use of this trimmer.
- * Never allow children or persons unfamiliar with these instructions to use this trimmer.
- * Do not allow children, other persons and home pets to get close to this trimmer; the grass being trimmed and flying around may contain stones or chips. If there are other persons, especially children nearby, stop using the trimmer.
- * When working with the trimmer, do not allow other persons or pets do get closer than 15 m.
- * Always use the trimmer only under daylight or good artificial light.
- * Before using the trimmer or after any impact, always check it for any signs of wear or damage and repair if needed. Do not use the sting strimmer if the cutting tool is not properly secured in place or if it is damaged.
- * Always check if the trimmer is in a good working condition, otherwise it might endanger the user.
- * Always use the protective covers while operating the string trimmer.
- * Do not use the trimmer if the protective elements are damaged.
- * Remove stones, metal particles, roots and other hard objects and plastic bags, as well as nylon strings and other items from the working area that cannot be crushed.
- * Before starting the trimmer, make sure that the nylon edge does not touch any stones or chips.
- * Never put your feet and hands in the trimming area, in particular while starting the engine.
- * Protect yourself against injury caused by the cutting edge along the trimming string. After spooling on a new trimming line, always return the string trimmer to its normal operating position before starting it.
- * Do not use spare parts or accessories the have not been supplied or recommended by the manufacturer.
- * Always make sure that the vent holes are free of chips.
- * Do avoid an inadvertent start, do not carry the machine with your finger on the start/stop switch.
- * Keep stable and safe position when working with the trimmer.
- * Clear the working area of wires, stones and chips.
- * Do not trim hard objects. This could result in injury or damage to the string trimmer.

⚠ ATTENTION!

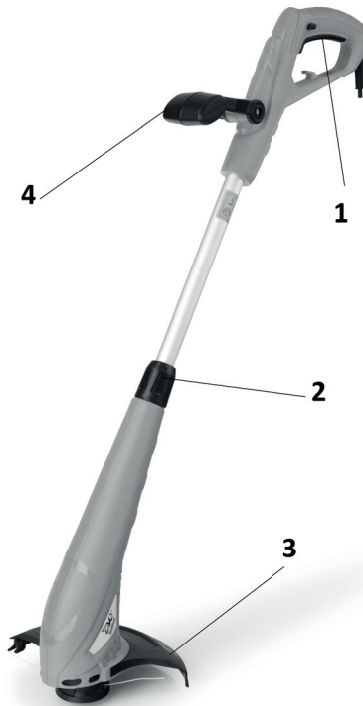
Cutting elements continue to rotate even after the motor is turned off!

- * Do not try to stop the cutting tool (nylon string) with your hands. Always allow it to stop on its own. This applies also for the metal three tooth blade.
- * Do not use the trimmer to cut grass that does not touch the ground such as grass on dwarf walls or rockeries.
- * Do not cross paths or gravel pathways with the trimmer still running.

4. DESCRIPTION OF THE POWER TOOL

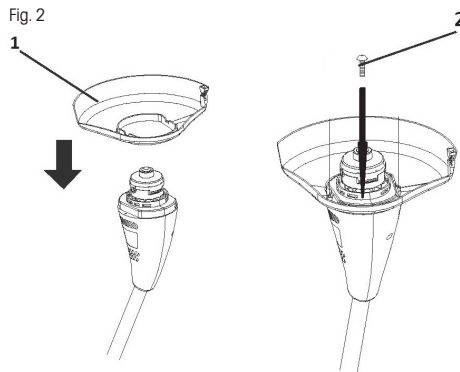
1. Start/stop trigger
2. Telescopic handle lock
3. String trimmer head guard
4. Handle

Fig. 1



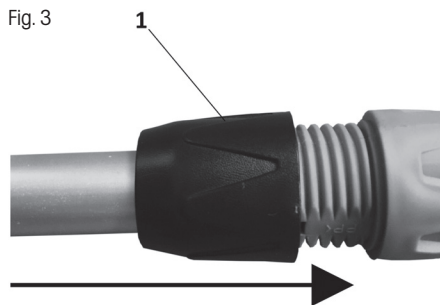
5. ASSEMBLY

- ✿ Insert the string head plastic cover on the motor bottom section and secure with the attached screw, see Fig.2.



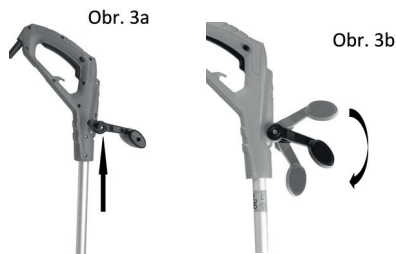
TELESCOPIC HANDLE ADJUSTMENT

- ✿ Release the lock nut. Fig. 3, point 1.
- ✿ Pull out or retract the handle's bar as needed
- ✿ Tighten the lock nut



FIXING THE HANDLE

- ✿ Attach the handle to the trimmer using the supplied screw and nut (Fig.3a)
- ✿ Before tightening the handle screw, you can adjust its position (Fig.3b)

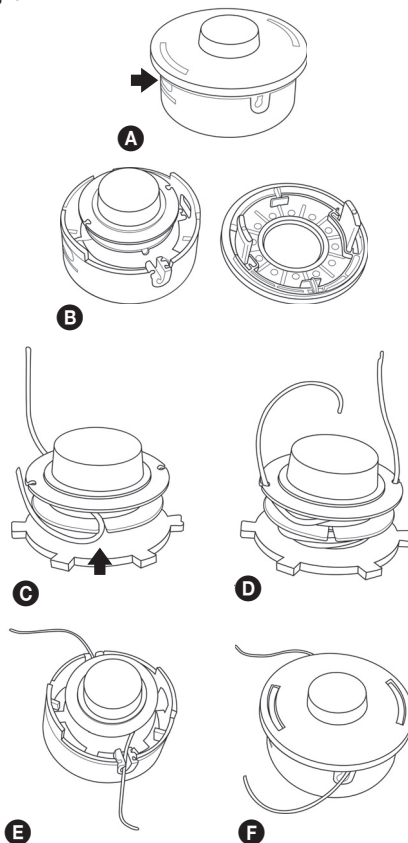


- ✿ Winding string trimmer line on to the trimmer head
 1. Push in the retaining latches on the side of the head and take off the cover (see Fig. 5, points A&B)
 2. Remove the coil from the string head. Prepare about 2 cm of string with 1.4 mm in diameter.
 3. Fold the string in half and secure bend in the groove (see Fig. 5, point C)
 4. Then, wind both ends in parallel onto the coil clockwise. Secure the ends of the wound on string trimmer line into the prepared holes (see Fig. 5, point D)
 5. Put the coil back in the string head and secure with the cover (see Fig. 5, point E&F)

⚠ WARNING

Use only good quality nylon string trimmer line with a diameter of 1.4 mm. Never use wire or wire-reinforced string trimmer line instead of the nylon string trimmer line. Only use the original string trimmer head.

Fig. 5



6. STARTING THE TRIMMER

✿ POINTS TO BE CHECKED BEFORE STARTING THE WORK

1. Check whether any screws, nuts and installation elements are loose. Tighten any loose screws.
2. Make sure that the plastic head guard is securely fastened in place.
3. Check the string trimmer head for damage.

WARNING

- ✿ Before starting the trimmer, make sure that the string moves freely and does not touch any foreign object.
- ✿ Hold the string trimmer firmly with both hands. Always stand so that your body is on the left of the shaft tube. Never hold the handle with crossed arms. These instructions also apply to left-handers.

CAUTION: Exposure to vibrations may damage the health of persons that suffer from circulatory or nerve system problems. If any physical problems become evident, such as desensitisation, loss of sensitivity, loss of usual strength or changes in skin colour, please contact a doctor. These systems usually manifest themselves on fingers, hands or wrists.

Starting the trimmer

Press the start/stop trigger (fig. 1, point 1). The trimmer will run at maximum speed.

Turn off the motor

Release the start/stop trigger (fig. 1, point 1).

7. CUTTING

⚠ WARNING!

When working with any string trimmer or brush cutter model, there is a danger of deflecting stones, metal or small objects and the cut material. Carefully read all the safety directives. Follow all the instructions provided in this user's manual.

⚠ WARNING!

Use head, eye, face and hearing protection. Use appropriate footwear that will protect your feet and which will ensure a firm stance on slippery surfaces. Do not wear ties, jewellery or loose clothing that could become caught in the moving parts of the tool. Do not wear footwear with an open tip. Do not work barefoot or with bare legs. In certain situations you must use full face and head protection. Take care to avoid recoil and jamming of the blade.

⚠ DANGEROUS ZONE

NOBODY APART FROM THE OPERATOR MAY ENTER THE DANGER ZONE OF A 15 METRE RADIUS. THE OPERATOR MUST USE APPROPRIATE EYE, HEARING, FACE, FOOT, LEG AND BODY PROTECTION. PERSONS LOCATED IN THE DANGER ZONE OR IN THE RISK ZONE AFTER THE DANGER ZONE MUST USE EYE PROTECTION AGAINST DEFLECTED OBJECTS. THE RISK IS REDUCED WITH INCREASING DISTANCE FROM THE DANGER ZONE.

CUTTING WITH THE NYLON STRING TRIMMER HEAD

- ✿ The string head is rotating CLOCKWISE.
- ✿ **The string feeding is semi-automatic. While trimming, simply gently tap the head on the ground, which will push down the button on the underside of the head and the string trimmer line will slide out. The string trimmer line is then shortened to the maximum permitted length on the blade integrated in the plastic guard.**

TRIMMING GRASS

- ✿ While doing this, drive the trimmer slowly into the material to be cut. Slowly tilt the head so that the trimmed material is ejected away from you. If you are trimming all the way up to obstacles such as fences, walls and trees, then approach at such an angle that all material is ejected away from you. Slowly move the head with the nylon string trimmer line from right to left until the grass is trimmed all the way to the obstacle but avoid the string trimmer line coming into contact with the obstacle.
- ✿ When trimming near a wired fence or fencing, proceed carefully to avoid contact with the wires. If you exceed the minimum distance from the fence, the string trimmer line will be shortened after impact.
- ✿ When trimming weeds, you can cut one stalk after another. Place the trimmer head with string trimmer line at the bottom part of the weed - never the top because the stem may start quivering and the string trimmer line may become caught in it. Rather than attempting to cut the weed directly, it is better to use only the end of the string trimmer line and to cut the stem slowly.

CLEARING AND TRIMMING EDGES

- ✿ Both activities are done with the nylon string head tilted under a big angle. Clearing means removing the top vegetation after which only soil remains.
- ✿ Trimming edges means cutting grass on the lawn edges that protrudes into pavements and pathways.
- ✿ During clearing and trimming edges, hold the tool under a steep angle and in such a position to avoid debris, cut material and stones being thrown back towards you if they bounce off hard surface. Despite the pictures showing how to perform clearing and trimming of edges, every user must find their own position that will suit their body dimensions and working conditions.

WARNING!

If a head with a nylon line is used, the correct protective guard must be fitted. If the nylon line extends out too far, it may start fluttering. If you use a head with a nylon line, always use the protective plastic guard with the cutter blade.

WARNING!

Be very careful when working above soil or gravel because the nylon line may deflect small stones at a very high speed.

The protective guard on this tool cannot stop objects that ricochet off hard surfaces.

WARNING!

Do not trim in places where there are wires and wire mesh. Use protective aids. Do not trim in locations where you cannot see what the trimmer is trimming.

8. MAINTENANCE

- ✿ The trimmer string may dry over time. To keep it in an excellent condition at all times, store spare pre-wound coils or a loose coil in a plastic bag with a spoonful of water added.
- ✿ To clean the appliance, use only fine soap and a damp cloth. Do not submerge the power tool in water or spray it with a hose. Do not allow any liquid to enter inside. Do not clean with pressurised water.
- ✿ The string trimmer at the protective cover edge may get blunt over time. We recommend that it is regularly resharpened with a file.

9. DISPOSAL

INSTRUCTIONS AND INFORMATION ON DISPOSING OF USED PACKAGING MATERIALS

Dispose of used packaging material at a site designated for waste in your municipality.



The appliance and its accessories are manufactured from various materials, e.g. metal and plastic. Take damaged parts to a recycling centre. Inquire at the relevant government department.



This appliance meets all the basic requirements of the EU directives.

Changes in the text, design and technical specifications may be made without prior notice and we reserve the right to make these changes.

User manual in the original language.

FAST[®]**FAST ČR, a.s.**Černokostelecká 1621, 251 01 Říčany, Czech Republic
tel.: +420 323 204 111, fax: +420 323 204 110

Declaration of Conformity

Product/ brand: Electric Lawn Trimmer/ **FIELDMANN****Type/ model:** **FZS 2306-E** as factory model DT2120
AC 230-240V, 50Hz, 350W, Class II, IPX0, Cutting length: 250mm
LpA: 74,65 dB(A), LwA: 96dB(A)**Manufacturer:** FAST ČR, a.s.
Černokostelecká 2111, 100 00 Praha 10, Czech Republic
VAT no: CZ26726548**This declaration of conformity is issued under the sole responsibility of the manufacturer.****The object of the declaration described above is in conformity with the relevant Union harmonisation legislation:**Directive MD 2006/42/EC
Directive EMC 2014/30/EU
Directive RoHS 2011/65/EU
Directive Noise 2000/14/EC**The relevant harmonised standards and the other technical specifications:**EN 60335-1:2012+A11
EN 50636-2-91:2014
EN 55014-1:2006+A1+A2
EN 55014-2:2015
EN 61000-3-2:2014
EN 61000-3-3:2013**Place of issuance:** Prague**Name:** Ing. Zdeněk Pech
Chairman of the Board**Date of issuance:** 20. 8. 2019**Signature:****FAST**[®] FAST ČR, a.s. 
Černokostelecká 1621, 251 01 Říčany
IČO: 26726548 tel.: +420/ 323 204 111
DIČ: CZ26726548 fax: +420/ 323 204 110

IČO: 26 72 65 48, DIČ: C7-26 72 65 48

Bankovní spojení: Komerční banka Praha 1, č.ú. 89309011/0100, Česká spořitelna Praha 4, č.ú. 2375682/0800,
ČSOB Praha 1, č.ú. 8010-0116233383/0300

11. TECHNICAL SPECIFICATIONS

Model	FZS 2306 E
Voltage/Frequency	230-240V ~ /50Hz
Electric motor power input	350 W
Cutting coverage	25 cm
Type of string trimmer head	Semi-automatic
Idling speed	12,000 rpm
Trimmer line diameter	1.4 mm
Weight	1.7 kg

Sound pressure level LpA: 74,65 dB(A), K=3 dB(A)

Guaranteed sound power emission level LwA: 96dB(A)

Vibrations..... 4.783m/s² K=1.5m/s²