



FZR 4615 LIBES

---

# Petrol Lawnmower

## INSTRUCTIONS FOR USE

**Thank you for purchasing this rotary petrol lawnmower. Before you start using it, please, carefully read this user's manual and save it for possible future use.**

### TABLE OF CONTENTS

1. GENERAL SAFETY REGULATIONS.....	4
Important safety notice .....	4
Packaging .....	4
User manual.....	4
2. EXPLANATION OF THE INSTRUCTION LABELS ON THE MACHINE.....	5
3. DESCRIPTION OF THE LAWNMOWER (FIG. 1) .....	7
4. ASSEMBLY/PREPARATION.....	7
5. ASSEMBLING THE LAWNMOWER.....	8
6. BEFORE STARTING THE LAWNMOWER .....	9
ADDING OIL .....	9
ADDING FUEL.....	9
7. CONTROLLING AND OPERATING THE LAWNMOWER .....	10
STARTING THE LAWNMOWER.....	10
CONTROLLING TRAVEL.....	11
APPLICATION RANGE FOR THE PETROL LAWNMOWER .....	11
MOWING WITH THE GRASS CATCHER .....	11
MOWING WITH REAR DISCHARGE .....	11
MOWING WITH SIDE DISCHARGE .....	11
MULCHING.....	12
SETTING THE MOWING HEIGHT.....	12
REPLACING THE MOWING BLADES .....	12
CHANGING THE MOTOR OIL.....	13
8. SAFETY INSTRUCTIONS .....	13
General safety instructions .....	13
Instructions for use .....	13
9. MAINTENANCE.....	14
Lawn care.....	14
Maintenance .....	15
Service.....	15
Warranty does not cover.....	16
Storage .....	16
10. TECHNICAL SPECIFICATIONS.....	17
11. MAINTENANCE INTERVAL .....	18
12. TROUBLESHOOTING.....	19
14. DISPOSAL .....	21

# 1. GENERAL SAFETY REGULATIONS

## IMPORTANT SAFETY NOTICE

- ✿ Unpack the product carefully and do not throw away any of the packaging until you have found all the parts of the product.
- ✿ Store the machine in a dry place out of children's reach.
- ✿ Read all the warnings and instructions. Failure to comply with the warnings and instructions may lead to electric shock, fire and/or serious injuries.


## PACKAGING

The product's packaging prevents damage during transport. This packaging is a resource and can be recycled.

## USER MANUAL

Before starting to work with the machine, please read the following safety regulations and instructions for use. Get familiar with the controls and correct use of the equipment. Keep the user's manual in a safe place for easy future reference. Save the original packaging, including the internal packing material, guarantee card and proof of purchase receipt for at least the time of the guarantee.

If you need to ship this machine, pack it in the original cardboard box to ensure maximum protection during shipping or transport (e.g. when moving or when you need to send this product for repair).

 **Note:** If you hand over the appliance to somebody else, do so together with this user's manual. Make sure you use the appliance properly by following the instructions in the included User manual. The user's manual also contains operating, maintenance, and repair instructions.

**The manufacturer assumes no responsibility for accidents or damages arising from failure to comply with these instructions.**

## 2. EXPLANATION OF THE INSTRUCTION LABELS ON THE MACHINE



Before putting into operation, please carefully read the user's manual.



Keep other persons away from the work area.



Attention, rotating blades! Protect yourself against the danger of injury to limbs.



Emission of toxic gasses. Do not use the petrol lawnmower in enclosed or unventilated areas.



Hot surfaces, risk of burns!



Before carrying out maintenance, turn off the engine and disconnect the spark plug.



Never add fuel while the engine is running.



Indicates that there is a risk of injury to persons, death or damage to the machine if instructions are not followed.



Use ear protection.  
Use eye protection.  
Use breathing protection.



Always maintain a distance from moving parts.



Travel along the slope on contours, not up and down.



Conforms to all relevant European directives.



Petrol is extremely flammable and therefore allow the engine to cool down for 2 minutes before adding more fuel.

### 3. DESCRIPTION OF THE LAWNMOWER (FIG. 1)

1. Start / brake lever
2. Travel lever
3. Top Handle
4. Screws with wing nuts
5. Lower handle
6. Fuel tank
7. Air filter cover
8. Side discharge deflector
9. Central mowing height adjustment lever
10. Rear deflector
11. Grass catcher
12. Starter battery slot
13. Start button



Fig. 1

### 4. ASSEMBLY/PREPARATION

Before assembling and starting the petrol lawnmower, first carefully read the entire user's manual and the instructions contained in it.

**⚠ IMPORTANT INFORMATION:** The lawnmower is supplied **WITHOUT FUEL AND OIL** in the engine. Your new lawnmower was tested at the production plant meaning that a small amount of residual oil may be in the engine.

#### **TAKING THE LAWNMOWER OUT OF THE CARDBOARD PACKAGING**

Take the lawnmower out of the cardboard packaging and check that no loose parts are left in the packaging.

## 5. ASSEMBLING THE LAWNMOWER

**⚠ IMPORTANT INFORMATION:** Carefully unfold the lawnmower handle careful not to pinch your finger or damage the lawnmower's control cables.

### 1. ASSEMBLING THE HANDLE

1. Insert the bottom part of the handle (Fig. 2 – point 1) into the respective hole on the lawnmower (see arrow) and secure in place with 4 screws – two screws on each side of the handle.
2. Attach the top part of the handle (Fig. 2 – point 2) to the bottom part of the handle using the included screws with wing nuts (Fig.2 – point 3).

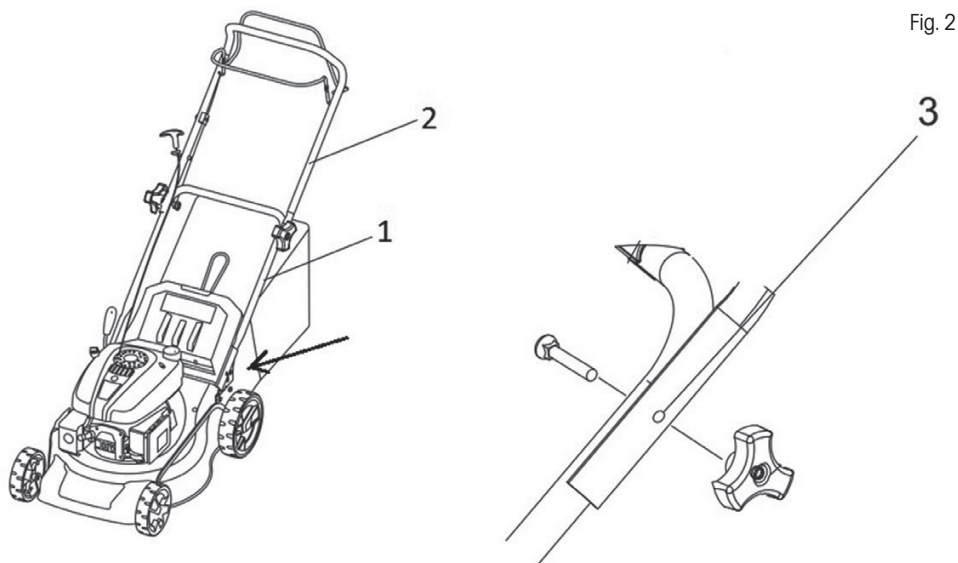


Fig. 2

### 2. INSTALLING THE HANDLE PANEL

Attach the plastic handle panel using the included screws (Fig. 3).



Fig. 3

### 3. ASSEMBLING THE GRASS CATCHER

Secure the plastic hooks at the end of the textile part of the grass catcher into the steel frame (Fig. 4).



Fig. 4

**⚠ IMPORTANT:** The grass catcher is equipped with a full indicator. It is a plastic flap at the rear of the grass catcher. When the grass catcher is not full, the flap is raised. When it closes, it is necessary to tip out the grass catcher.

## 6. BEFORE STARTING THE LAWNMOWER

### ADDING OIL

**The lawnmower is supplied without motor oil. Before first start up, add motor oil SAE30 or 15W-40 (approx 400 ml) according to the following instructions.**

1. When pouring in the oil, place the lawnmower on a level surface.
2. Pull the cap with the oil dipstick out of the oil refill hole (Fig. 5).
3. After adding oil, put the dipstick back into the hole and tighten it.
4. The oil level must be between the upper (MAX) and lower (MIN) limit (Fig. 5).

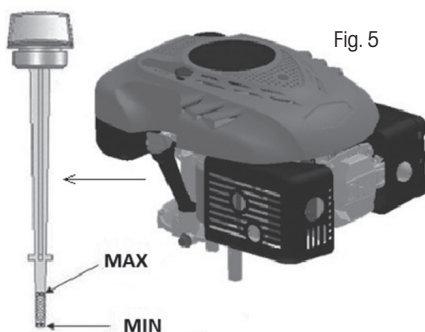


Fig. 5

**⚠ Caution!** DO NOT OVERFILL the oil tank, otherwise a large amount of smoke will come out of the exhaust when the lawnmower is started up.

**⚠ IMPORTANT INFORMATION:** Check the oil level before every use of the lawnmower. Add oil if necessary. Add oil up to the MAX level mark on the oil dipstick.

**⚠ IMPORTANT INFORMATION:** Replace the oil after the first 5 hours of operation and subsequently after every 25 hours of operation.

### ADDING FUEL

**The suitable type of fuel for this engine is NATURAL 95**

After unscrewing the fuel tank cap (Fig 1 – point 7), add the fuel, pouring it in all the way up to the collar of the fuel tank but do not overfill it.

Always add fresh, clean and approved lead-free petrol with an octane rating of at least 95.



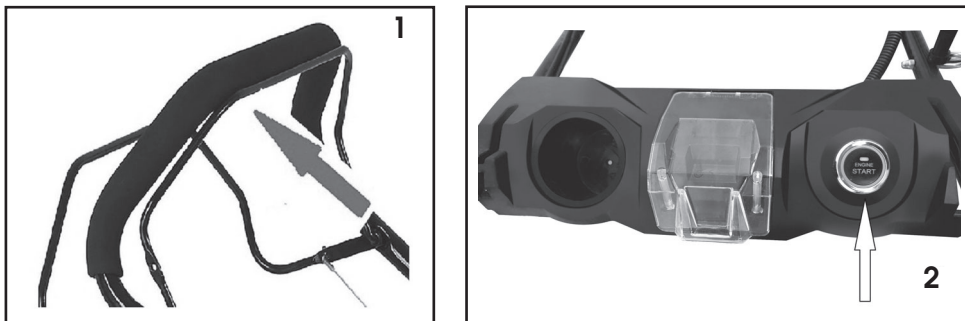
- ⚠ Caution!** In the event that you spill any oil or fuel on the lawnmower when refilling, wipe it away immediately.  
Do not store or add fuel or handle it in any way in the vicinity of an open fire.
- ⚠ Caution!** Fuels mixed with alcohol or fuels with ethanol or methane additives may bind moisture to themselves, which may result in separation during storage and the formation of acids. Subsequently during storage the acid vapours may damage the fuel system of the lawnmower engine. These fuels must not be used in the lawnmower.
- ⚠ IMPORTANT INFORMATION:** When not using the lawnmower for longer than 30 days, drain the fuel tank, start the engine and let it run until the fuel lines and the carburettor are empty (the engine will stop on its own). This will prevent future engine problems.  
Before using it again, add fresh fuel into the fuel tank. For more information, see chapter Storage instructions.

## 7. CONTROLLING AND OPERATING THE LAWNMOWER

### STARTING THE LAWNMOWER

1. Pull the start/brake lever towards the handle and hold it there (Fig. 6 – point 1).
2. Press the START/STOP button (Fig. 6 – point 2).
3. To turn off the engine, release the Start/brake lever.

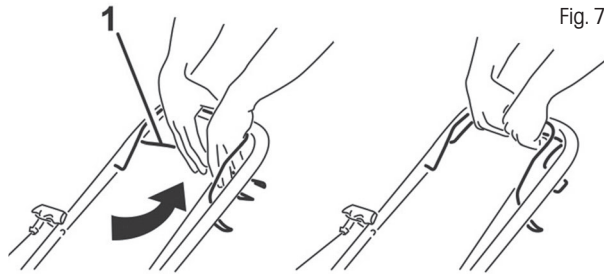
Fig. 6



- ⚠ Caution!** A small amount of smoke may be emitted when the engine is started up for the first time as the protective layers in the engine are burnt off. This is completely normal and does not constitute a problem.
- ⚠ Caution!** The starter lithium battery is NOT recharged while mowing. It is possible to start the machine about 100 times with one battery charge. The battery is equipped with a status indicator for determining the current capacity. The battery is equipped with a thermal fuse. Allow the battery to cool down when it is overheated.

## CONTROLLING TRAVEL

The travel is controlled using the travel lever (Fig. 7, point 1). When the lever is pulled to the handle, the lawnmower will start moving. To stop, release the lever. This lawnmower has one constant speed.



## APPLICATION RANGE FOR THE PETROL LAWNMOWER

Mowing with collection of grass clippings in a grass catcher  
 Mowing with rear discharge of grass clippings  
 Mowing with side discharge  
 Mulching - mowing with loose placement of grass clippings on the lawn

**⚠ Caution! Do not use the mower on slopes with an inclination of more than 20°, otherwise motor seizure might occur!**

## MOWING WITH THE GRASS CATCHER

When the grass catcher is installed, grass clippings are discharged into the grass catcher

**⚠ Caution!** In case of poor mown grass catching, increase the mowing height and check if the lawn is wet.

## MOWING WITH REAR DISCHARGE

Without the grass catcher installed, the grass catcher cover serves as a deflector that directs the movement of the grass clippings towards the ground. A row of grass clippings is thereby formed behind the lawnmower

## MOWING WITH SIDE DISCHARGE

**⚠ Caution!** Attach and remove the side discharge deflector only when the engine is turned off.

Use your hand to lift the side discharge cover and attach the side discharge deflector (Fig. 8). In order to mow with the side discharge, it is necessary to install a mulching plug into the discharge chute.



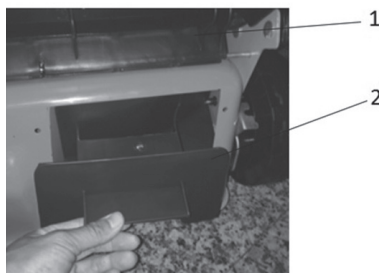
## MULCHING

**⚠ Caution!** Attach and remove the mulching plug only when the engine is turned off.

**⚠ Caution!** Use only original mulching accessories when mulching.

1. Remove the grass catcher and hold the plastic grass catcher cover with your hand (Fig. 9 – point 1).
2. Install the mulching plug into the discharge chute (Fig. 9 – point 2) and make sure that the plug is seated firmly.

Fig. 9



**⚠ IMPORTANT INFORMATION:** Do not mulch tall grass all at once, this will prevent overloading the lawnmower mechanism and the engine.

## SETTING THE MOWING HEIGHT

The mowing height is set centrally using the central mowing height adjustment lever (Fig. 1 – point 11)

You can select from 5 positions in the range of 25 to 75 mm.

The middle mowing height is the most suitable for the majority of lawns.

Lawn damage may result when the lowest height is set.

**⚠ Caution!** For maximum effectiveness, please always trim the grass by 1/3 of its length only. Mow the overgrown grass gradually and after each mowing, lower the height by one step. To keep quality lawn, do not use the lowest mowing height setting.

## REPLACING THE MOWING BLADES

**⚠ Caution!** Contact an authorised service centre

**⚠ Caution!** Prior to removing the blade, drain the oil from the oil tank.

If you wish to replace the mowing blade, remove the bolt (Fig. 10). Perform the installation according to the provided picture.

Tighten the screw. The tightening torque is 40 Nm. When replacing the blade, replace the fastening bolt as well.

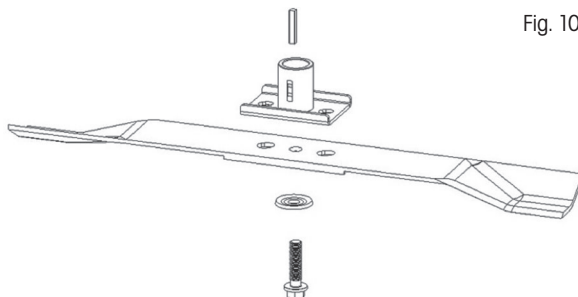


Fig. 10

## CHANGING THE MOTOR OIL

**⚠ Caution!** For this task, we recommend that you contact an authorised service centre.

The drain plug is located under the engine (Fig. 11 – point 1). Place a suitable container for catching the used oil under the engine and remove the plug. Tilt the lawnmower so that all the oil can drain from the oil tank. After draining the oil, put the plug back into the hole, making sure that the plug is securely in its place and wipe away any drops of spilled oil.

Add type SAE30 or 15W-40 oil into the oil tank.

When the oil dipstick is inserted into the hole and screwed in, the oil level should be between the Min and Max marks (Fig. 11). Do not overfill the oil tank.

Start the engine and allow it to run for a short time. Stop the engine, wait 1 minute and remeasure the oil level in the oil tank. Add oil to the required level if necessary.

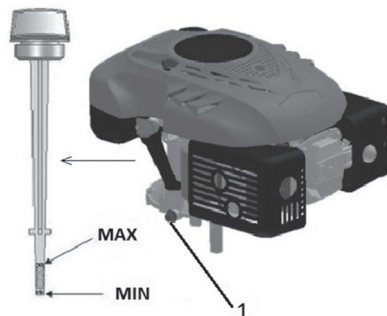


Fig. 11

# 8. SAFETY INSTRUCTIONS

## GENERAL SAFETY INSTRUCTIONS

- ✿ This product is used exclusively for mowing grass. Do not use it for any other purposes than those intended. Otherwise, there is a risk of damaging it or an injury.
- ✿ Never allow children or persons who are not acquainted with the contents of this user's manual to work with the machine.
- ✿ The person operating the lawnmower is responsible for the safety of persons in the work area. Never operate the lawnmower in the near vicinity of other people, children or freely roaming animals.
- ✿ Before starting mowing, check the terrain where the lawnmower will be used and remove stones, wires, sticks, splinters, bones and other foreign objects, which could become caught in it or deflected or cause injuries.

## INSTRUCTIONS FOR USE

- ✿ All nuts, pins and bolts must be properly tightened so that the machine is in a safe and operational condition.
- ✿ Never use the lawnmower without the grass catcher or protective cover.
- ✿ Never use the lawnmower with loose mowing blades. Always check in advance that all respective bolts are securely tightened. Blunt blades must be sharpened evenly. Damaged blades must be replaced.
- ✿ When working with the lawnmower, wear long pants and solid footwear.
- ✿ Never start the lawnmower in enclosed or poorly ventilated areas where fumes could accumulate. Emissions from the engine contain carbon monoxide, which is life threatening.
- ✿ Work only during sufficient light conditions (in daylight or sufficient artificial lighting).
- ✿ Do not use the lawnmower when it is raining or if the grass is wet.
- ✿ Proceed especially carefully when mowing in elevated terrain (on a slope). Always mow perpendicular to the slope, parallel to the contour, and not directly up/down.
- ✿ Under no condition leave the lawnmower running without supervision; if you leave the lawnmower, turn off the engine.

- ✿ Never lift the rear part of the lawnmower when starting it and always keep your limbs away from the cutting deck or the rear grass ejection chute while the engine is running.
- ✿ Never modify the engine's speed setting.
- ✿ On lawnmowers with travel, release the travel lever before starting the engine.
- ✿ Never transport the lawnmower while its engine is running.
- ✿ Stop the engine and disconnect the spark plug in the following cases:
  - when performing any task whatsoever under the mowing deck or in the rear grass ejection chute.
  - when performing maintenance, repairs or inspecting the machine.
  - before carrying, lifting or transporting the lawnmower.
  - when you leave the lawnmower without supervision or you are getting ready to adjust the mowing height.
  - before removing and emptying the grass catcher.
  - when an impact with a foreign object occurs, stop the engine and carefully inspect to ensure that there is no damage. In the event of damage, take the lawnmower to a specialised service centre for repairs.

**⚠ ATTENTION:** The mowing blade continues to rotate for several seconds after the engine is turned off.

- if the lawnmower is vibrating abnormally (immediately identify and remedy the cause of the vibration).
- For the purpose of ensuring safe operation, regularly check that the pins, bolts and nuts on the lawnmower are securely tightened.

**⚠ ATTENTION:** FUEL IS A VERY FLAMMABLE LIQUID.

- ✿ Store fuel in a suitable container.
- ✿ Only add fuel in an open and well ventilated location. When handling fuel, do not smoke or use a mobile phone.
- ✿ Only add fuel when the engine is turned off. Never open the fuel tank or add fuel if the engine is hot or if it is running.
- ✿ If fuel is spilled, do not start the engine. Take the lawnmower away from the location where the fuel was spilled and take care to avoid possible ignition. Continue with work only after the spilled fuel has evaporated and the fuel fumes have dissipated;
- ✿ After adding fuel, securely tighten the fuel tank cap and the cap on the fuel canister.

**⚠ ATTENTION:** Before carrying out maintenance or repairs, stop the engine and disconnect the spark plug.

## 9. MAINTENANCE

### LAWN CARE

- ✿ Various forms of care are required depending on the type of grass area.
- ✿ Therefore, always read the instructions included on seed packages with respect to the mowing height for the growing conditions in the given locality.
- ✿ It is necessary to always keep in mind that the larger part of grass consists of a stem and one or more leaves. When the leaves are cut off completely, the lawn is damaged and the renewal of growth will be much more difficult.
- ✿ The following instructions generally apply:
  - excessively low mowing causes disruption to the roots and subsequently "spotty" appearance;

- in summer, mowing must be higher to prevent the soil from drying out;
  - mowing wet grass may result in a lower efficiency of the blade due to grass catching on the blade and grass being ripped out of the ground;
  - in the event of exceptionally tall grass it is appropriate to perform the first mow at the maximum permitted mowing height of the machine and then mow again only after two or three days.
- ☼ The lawn will have a better appearance when it is mowed regularly over its entire area at the same height with alternating mowing directions.

## MAINTENANCE

- ☼ All nuts, pins and bolts must be properly tightened so that the machine is in a safe and operational condition. Regular maintenance is the basic prerequisite for ensuring safety of the user, maintain the lawnmower's operating condition and high performance.
- ☼ Never store a machine with petrol in the fuel tank inside a building where the fumes could come within range of an open fire, sparks or sources of high temperature
- ☼ Before storing in any enclosed area, allow the engine to cool down.
- ☼ To reduce the risk of a fire, ensure that the lawnmower and in particular the engine, exhaust muffler, battery and also the location of spare fuel storage are free of grass, leaves or excessive amounts of lubricant.
- ☼ Regularly inspect the condition of the deflector and the grass catcher; replace if damaged.
- ☼ Drain the fuel in a well ventilated area when the engine has cooled down.
- ☼ When removing or installing the mowing blade, use thick work gloves.
- ☼ It is necessary to check the balance of the mowing blade every time that it is sharpened.

**⚠ ATTENTION:** Before carrying out maintenance or repairs, stop the engine and disconnect the spark plug.

- ☼ Regularly inspect the lawnmower and ensure that all grass deposits are removed from the underside of the chassis.
- ☼ Regularly lubricate the axle of the chassis and the bearings using a suitable lubricant.
- ☼ Regularly inspect the condition of the blades because they have a significant effect on the performance of the lawnmower. Blades should always be sharp and balanced.
- ☼ In regular intervals, check that all nuts and bolts are tightened. Nuts and bolts that are worn out or incorrectly tightened may cause serious damage to the engine or the frame.
- ☼ If the blade strongly impacts an obstacle, stop the lawnmower and take it to an authorised service centre.
- ☼ **BLADE:** the blade is made from pressed steel. To achieve the best possible mowing results, regularly sharpen the blades, approximately after every 25 hours of operation. Check that the blade is always correctly balanced. To do this, insert a steel axle (with a diameter of 2-3 mm) into the middle hole. If it is correctly levelled, the axis will remain in the horizontal position.
- ☼ If the blade does not remain in the horizontal position, replace it.
- ☼ When removing the blade, screw out the bolt, check the load bearing part of the blade. If the parts are worn out or damaged, replace them.

**⚠ ATTENTION:** Always use only original spare parts. Poor quality spare parts may cause serious damage to the lawnmower and create a safety hazard.

## SERVICE

- ☼ In the event that after purchasing the product you find any kind of defect, contact the service department. When using the product, follow the instructions contained in the included user's manual.

- ✿ A complaint will not be accepted if you modified the product or if you did not follow the instructions in the user's manual.

### **WARRANTY DOES NOT COVER**

- ✿ Normal wear and tear of operating parts of the machine as a result of its use
- ✿ Servicing tasks related to standard maintenance of the machine (e.g. cleaning, lubrication, tuning, etc.). Defects caused by external effects (e.g. climatic conditions, dustiness, inappropriate use, etc.)
- ✿ Mechanical damage resulting from the machine being dropped, impact, etc.
- ✿ Damages resulting from unprofessional handling, overloading, use of incorrect parts, inappropriate tools, etc.
- ✿ On returned products that were not properly protected against mechanical damage during transport, the risk of potential damage is borne exclusively by the owner.

### **STORAGE**

- ✿ If you will not be using the machine for an extended period of time, store it according to the following instructions. This will extend the lifetime of the machine.
- ✿ Fully drain fuel from the fuel tank and the carburettor.
- ✿ Screw out the spark plug and pour a small amount of motor oil into the socket. Gently pull the pull cord 2 to 3 times.
- ✿ Use a clean cloth to clean the exterior surfaces. Store the machine in a clean dry location.

## 10. TECHNICAL SPECIFICATIONS

Engine	DV0150
Engine type	OHV, air cooled, 4-stroke
Rated power	2.70 kW
Engine rpm	2800 rpm
Displacement	150 cm <sup>3</sup>
Starting	Manual & electric 10.8V 2Ah Liion Battery
Fuel tank volume	0,8 l
Recommended fuel	Petrol - lead-free, at least 95 octane
Oil tank volume	0,4 l
Recommended oil	SAE30, 15W-40
Setting the mowing height	Central, 7 positions
Adjustable mowing height range	25-75 mm
Mowing coverage	460 mm
Wheel size	Front 178 mm, rear 200 mm
Grass catcher capacity	55 l
Chassis	steel
Declared noise level	96 dB (A)
Maximum vibration level	8.125 m/s (K=1.5)
Weight	32.5 kg

Amendments to text and technical parameters are reserved.

The text, design and technical specifications can be changed without prior notice and we reserve the right to make these changes



## 11. MAINTENANCE INTERVAL

<b>Regular maintenance schedule,</b> always perform at a monthly or hourly interval – whichever comes first		Before each use	After 5 hours of operations for new machines	Every 6months or after 25 hours of operation	Every year
Cleaning the machine, tightening the connecting screws		X			
Engine oil	Level check	X			
	Replacement		X	X	
Air filter	Inspection	X			
	Cleaning			X	
	Replacement				X
Spark plug	Inspecting & Cleaning			X	
	Replacement				X
Checking the mowing mechanism	Inspection				X(*)
Idling	Checking & Adjusting				X(*)
Valve movement	Checking & Adjusting				X(*)
Combustion chamber	Cleaning				X(*)
Fuel lines	Inspecting & Cleaning				X(*)
General preventative inspection					X(*)

\*entrust this maintenance to an authorized service centre

**⚠ Caution!** If the mower is used in arduous or dusty conditions, change the oil and clean the air filter at more frequent intervals

## 12. TROUBLESHOOTING

Problem	Probable cause	Procedures
Unable to start the engine	Choke valve damper in wrong position	Move the choke lever to the correct position
	The fuel tank is empty	Fill the fuel tank with fuel
	The air filter is dirty	Clean the air filter
	Loose spark plug	Tighten the spark plug to 25-30 Nm
	The ignition cable is loose or disconnected from the spark plug	Install the ignition cable to the spark plug
	Incorrect gap between spark plug electrodes	Install a new spark plug with the correct gap between the electrodes
	Faulty ignition module	Contact the repair shop
The engine is difficult to start or loses power	Dirt, water or old fuel in the tank	Drain the fuel and clean the tank. Fill the tank with fresh clean fuel
	Clogged air vent in fuel tank cap	Clean or replace the fuel filler cap
	The air filter is dirty	Clean the air filter
	Dirt, water or old fuel in the tank	Drain the fuel and clean the tank. Fill the tank with fresh clean fuel
	Clogged air vent in fuel tank cap	Clean or replace the fuel filler cap
	The air filter is dirty	Clean the air filter
The engine runs irregularly	Faulty spark plug	Install a new spark plug with the correct gap between the electrodes
	Incorrect gap between the electrodes	Set the gap between the electrodes at 0.7 to 0.8 mm
	The air filter is dirty	Clean the air filter
The engine is idling poorly	The air filter is dirty	Clean the air filter
	The air gaps in the engine cover are clogged	Remove debris from the gaps
	The cooling fins and air passages below the engine fan are clogged	Remove debris from cooling fins and air passages
The engine stops at high speed	The gap between the spark plugs is too small	Set a gap of 0.7 to 0.8 mm
The motor is overheating	Limited airflow	Remove any debris from the gaps on the engine cover, fan cover, and air passages
	Unsuitable spark plug	Install a new spark plug with the correct gap between the electrodes
The mower vibrates violently	The cutting unit is loose	Tighten the mower blade
	The cutting unit is not balanced	The mower blade must be balanced
	Bent crankshaft	Contact the repair shop

# FAST<sup>®</sup>

FAST ČR, a.s.  
Černokostecká 1621, 251 01 Říčany, Czech Republic  
tel.: +420 323 204 111, fax: +420 323 204 110

## Declaration of Conformity

**Product/ brand:** Gasoline powered lawnmower/ FIELDMANN

**Type/ model:** FZR 4615-LiBES as factory model DM46ES-DO150  
150 cm<sup>3</sup>; 2,7kW/ 2800 min<sup>-1</sup>, Cutting width 460mm, Lpa 81,6dB(A), Lwa 96dB(A)

**Manufacturer:** FAST ČR, a.s.  
Černokostecká 2111, 100 00 Praha 10, Czech Republic  
VAT no: CZ26726548

This declaration of conformity is issued under the sole responsibility of the manufacturer.

The object of the declaration described above is in conformity with the relevant Union harmonisation legislation:

Directive Machinery 2006/42/EC  
Directive EMC 2014/30/EU  
Directive Noise 2000/14/EC + 2005/88/EC  
Directive Emission of gaseous 2016/1628/EU  
Directive RoHS 2015/863/EU

The relevant harmonised standards and the other technical specifications:

EN ISO 5395-1:2013+A1  
EN ISO 5395-2:2013+A2  
EN ISO 14982:2009  
EN ISO 3744:1995



**Place of issuance:** Prague

**Name:** Ing. Zdeněk Pech  
Chairman of the Board

**Date of issuance:** 21. 8. 2019

**Signature:**

**FAST<sup>®</sup>** FAST ČR, a.s. ©  
Černokostecká 1621, 251 01 Říčany  
IČO: 26726548 tel.: +420/ 323 204 111  
DIČ: CZ26726548 fax: +420/ 323 204 110

IČO: 26 72 65 48. DIČ: C7-26 72 65 48

Bankovní spojení: Komerční banka Praha 1, č.ú. 89309011/0100, Česká spořitelna Praha 4, č.ú. 2375682/0800,  
ČSOB Praha 1, č.ú. 8010-0116233383/0300

## 14. DISPOSAL

### **INSTRUCTIONS AND INFORMATION ON DISPOSING OF USED PACKAGING MATERIALS**

Dispose of used packaging material at a site designated for waste in your municipality.



The appliance and its accessories are manufactured from various materials, e.g. metal and plastic.

Take damaged parts to a recycling centre. Inquire at the relevant government department.



This appliance meets all the basic requirements of the EU directives.

The text, design and technical specifications may be changed without prior notice and we reserve the right to make these changes.

Translation of the original user's manual

