



FDPP 2175-E

English	1-12
Čeština.....	13-24
Slovenčina	25-36
Magyarul	37-48
Polski	49-60

Soldering Gun

USER'S MANUAL

Thank you for your purchase of the Soldering Gun. For your personal safety, read and understand the Instruction Manual before using. Keep the Instruction Manual in a safe place for future reference.

TABLE OF CONTENTS

1. GENERAL SAFETY INSTRUCTIONS	2
2. DESCRIPTION OF THE MACHINE AND CONTENTS.....	6
3. OPERATING INSTRUCTIONS	7
4. MAINTENANCE	8
5. SAFETY INSTRUCTIONS	9
6. TECHNICAL SPECIFICATIONS.....	11
7. DISPOSAL.....	11
8. DECLARATION OF CONFORMITY	12

1. GENERAL SAFETY INSTRUCTIONS

⚠ WARNING! Carefully read the instruction manual before use.

IMPORTANT SAFETY WARNINGS

- ✿ Unpack the product carefully and be sure not to throw away any part of the package before having found all components of the product.
- ✿ Keep the product in a dry place out of reach of children.
- ✿ Read all cautions and instructions. The failure to adhere to warning cautions and instructions may result in an accident, fire and/or a serious injury.

PACKAGING

The product is placed in a package preventing damage during transport. This package is a raw material therefore it can be handed-over for recycling.

INSTRUCTIONS FOR USE

Before beginning to work with the machine, read the following safety rules and instructions for use. Familiarize with operating elements and the proper use of the device. Keep the manual in a safe place for future reference.

We recommend keeping the original package including the inner packaging materials, cash voucher and guarantee card for a period of warranty at minimum.

For a case of transportation, pack the machine into the original box from the manufacturer, thus ensuring a maximum protection of the product during a possible transport (e.g. moving or sending into a service station).

📖 Note: If you hand the machine over to next persons, hand it over together with the manual.

Adherence to the attached instructions for use is a precondition for the proper use of the machine. The operation manual includes also instructions for operation, maintenance and repairs.

The manufacturer does not take any responsibility for accidents or damages resulting from the failure to adhere to this manual.

CAREFULLY READ, REMEMBER AND KEEP THESE SAFETY INSTRUCTIONS

⚠ WARNING! In the use of electric machines and power tools, it is necessary to respect and follow the following safety instructions for the reasons of protection against electric shock, personal injury and danger of fire. The term "power tool" in the instructions below refers both to mains-operated (corded) power tool or battery-operated (cordless) power tool.

Save all warnings and instructions for future reference.

WORKPLACE

- ☼ Keep the work area clean and well lit. Cluttered or dark areas in the workplace invite accidents. Store power tools that you don't currently use.
- ☼ Do not operate power tools in environments with danger of occurrence of a fire or explosion, such as in the presence of flammable liquids, gases, or dust. Power tools create sparks which may ignite the dust or fumes.
- ☼ Keep unauthorised persons, especially children, away from the work area while operating a power tool! Distractions can cause you to lose control over the performed activity. In no event leave your power tool unattended. Keep the equipment away from animals.

ELECTRICAL SAFETY

- ☼ Power tool plugs must match the mains socket outlet. Never modify the plug in any way. Do not use any adapter plugs with earthed (grounded) power tools. Undamaged plugs and matching outlets will reduce risk of electric shock. Damaged or fouled supply cables increase the risk of electric shock. If the power cord is damaged, it must be replaced by a new power cord which is available at the authorised service centre or the importer.
- ☼ Avoid body contact with earthed or grounded surfaces such as pipes, radiators, cooking ranges and refrigerators. There is an increased risk of electric shock if your body is earthed or grounded.
- ☼ Do not expose power tools to rain or wet conditions. Never touch the power tool with wet hands. Never wash the power tool under running water or immerse it in water.
- ☼ Never use the supply cable for other than intended purposes. Never use the cord for carrying or pulling the power tool. Never unplug the plug from the outlet by pulling the cable. Keep electric cables away from sharp or hot objects to prevent mechanical damage.
- ☼ The power tool was designed to be powered solely by alternating electric current. Always check if the electric voltage matches the information specified in the type label of the power tool.
- ☼ Never use power tool with damaged electric cable or plug or which has been dropped or is in any way damaged.
- ☼ If an extension cord is used, always check whether its technical parameters match the information specified in the type label of the power tool. When operating a power tool outdoors, use an extension cord suitable for outdoor use. If extension drums are used, these must be rolled out to prevent overheating of the cord.
- ☼ If a power tool is operated in a damp location or outdoors, its operation is only permitted if connected to an electric circuit protected by a residual current device <math><30\text{ mA}</math>. Use of residual current device (RCD) reduces the risk of electric shock.
- ☼ Hold the power tool by insulated gripping surfaces only as the cutting or drilling tool may contact hidden wiring or its own power cord during operation.

PERSONAL SAFETY

- ✿ Be careful, stay alert and watch what you are doing when operating a power tool. Concentrate on your work. Do not use a power tool while you are tired or under the influence of drugs, alcohol or medication. A moment of inattention while operating power tools may result in serious personal injury. Do not eat, drink and smoke while operating a power tool.
- ✿ Use personal protective equipment. Always wear eye protection. Use protective equipment corresponding to the type of work you are doing. Protective equipment such as dust mask, non-skid safety shoes, hard hat, or hearing protection used in accordance with the working conditions will reduce the risk of personal injury.
- ✿ Prevent unintentional starting. Do not carry the power tool while it is energised or with your finger on the switch or trigger. Ensure the switch or trigger is in the "off" position before connecting to power source. Carrying power tools with your finger on the switch or energising power tools that have the switch on may result in serious injuries.
- ✿ Remove any adjusting key or wrench before turning the power tool on. An adjusting wrench or a key left attached to a rotating part of the power tool may result in personal injury.
- ✿ Keep proper footing and balance at all times. Do not overreach. Never overestimate your own capabilities. Never use power tools while you are tired.
- ✿ Dress properly. Wear work clothes. Do not wear loose clothing or jewellery. Keep your hair, clothing, gloves and other part of your body away from moving or hot parts of the power tool.
- ✿ Connect the equipment to dust exhaustion. If the tools are provided for the connection of dust collection or exhaustion devices, ensure these are properly connected and used. Use of such devices can reduce dust-related hazards.
- ✿ Fix the work-piece tightly. Use a cabinet clamp or a cramp to fix the work-piece you are about to machine.
- ✿ Never use power tools if you are under the influence of alcohol, drugs, medication or other narcotic or addictive substances.
- ✿ This equipment is not intended for use by persons (including children) with limited physical, sensual or mental capacities or lack of experience or knowledge unless they are supervised or instructed about the use of the equipment by a person responsible for their safety. Children must be supervised to make sure they are not playing with the equipment.

POWER TOOL USE AND MAINTENANCE

- ✿ Always disconnect the power tool from the mains in case of any problem during the work, before cleaning the power tool or its maintenance, during each transportation and after the completion of the work! Never operate a power tool if it is damaged in any way.
- ✿ Immediately stop working if the power tool generates abnormal noise or smell.
- ✿ Do not overload the power tool. The power tool will operate better and safer if it is used at the rate for which it was designed. Use correct power tool which is intended for the given activity. The correct power tool will do the job it was designed for better and safer.
- ✿ Do not use the power tool if it cannot be safely turned on and off using the control switch. Use of such power tool is dangerous. Defective switches must be repaired by a certified service provider.
- ✿ Disconnect the tool from the power source before making any adjustments, changing accessories or maintenance. Such preventive safety measure prevents the risk of starting the power tool accidentally.
- ✿ Store idle power tools out of the reach of children and unauthorised persons. Power tools can be dangerous in the hands of untrained users. Store the power tools in a dry and safe place.

- ✿ Keep the power tool in good condition. Check the adjustment of moving parts and their mobility. Check for any damage to the protective guards or other parts which could affect safe operation of the power tool. If damaged, have the power tool properly repaired before further use. Many accidents are caused by poorly maintained power tools.
- ✿ Keep cutting tools sharp and clean. Properly maintained cutting tools with sharp cutting edges facilitate work, reduce the risk of injury and are easier to control. Use of accessories other than those specified in the instructions for use could result in damage to the power tool and cause injuries.
- ✿ Use the power tool, accessories and tool bits etc. in accordance with these instructions and in the manner intended for the particular type of power tool taking into account the working conditions and the work to be performed. Use of the power tool for purposes other than those the power tool was intended for could result in hazardous situations.

USE OF CORDLESS POWER TOOLS

- ✿ Before inserting the battery, make sure the switch is in the "O-OFF" position. Inserting a battery into a switched-on power tool could result in hazardous situations.
- ✿ Charge batteries only using the chargers prescribed by the manufacturer. Using a charger intended for other battery type could result in its damage and occurrence of fire.
- ✿ Use only batteries intended for particular power tool. Use of different batteries could cause injury or occurrence of fire.
- ✿ If the battery is not used, keep it separately from metal objects such as clamps, keys, bolts and other small metal items which could cause connection of one battery contact with the other. Short-circuiting the battery could result in injury, burns or occurrence of fire.
- ✿ Handle the batteries with care. Rough handling could result in leak of chemical substance from the battery. Avoid contact with such substance and if, nonetheless, any contact occurs wash the affected area under running water. If eyes get into contact with the chemical substance seek immediately medical aid. Chemical substance from the battery can cause serious injuries.

SERVICE

- ✿ Do not replace parts of the power tool, do not make any repairs or interfere in any way with the construction of the power tool. Have your power tool repaired by qualified repair persons.
- ✿ Any repair or modification of the product without our company's authorisation is impermissible (it could cause injury or damage to the user).
- ✿ Always have your power tool repaired in a certified service centre. Use only original or recommended replacement parts. This will ensure that your safety and the safety of your power tool is maintained.

2. DESCRIPTION OF THE MACHINE AND CONTENTS

DESCRIPTION OF THE MACHINE (FIG. 1.)

1. Soldering Tip
2. Screw
3. Light
4. Switch
5. Handle
6. Plug



Fig. 1

PARTS LIST (FIG. 2.)

1. Soldering Tip
2. Movable elastic
3. Heat insulation fixed staff impiece
4. Transformer
5. Cabinet(a)
6. Cabinet(b)
7. Nameplate
8. Screw
9. Cord
10. Cord armor
11. Terminal board
12. Switch
13. Push button
14. LED

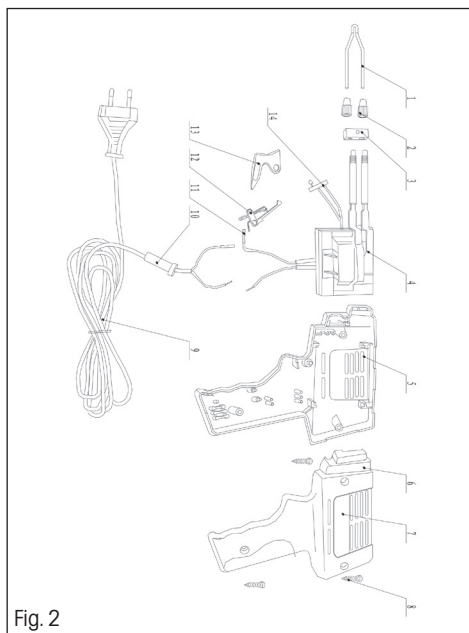


Fig. 2

NOTE:

Some parts are listed and shown for illustration purposes only and are not available individually as replacement parts.

3. OPERATING INSTRUCTIONS

Before using the Gun, make sure your voltage and electric current frequency match with the technical information above. The numbers shown here refer to the illustration above.

1. Using the **Cord (#6)**, connect the gun to a 230V/50Hz power supply.
 2. Holding the gun by the **Handle (#5)** place the **Solder Tip (#1)** on the point you wish to solder.
 3. Turn on the **Switch (#4)** and the **Light (#3)** will shine on.
 4. It will take 6 to 8 seconds for the gun to reach temperature (230 degrees C).
 5. When finished soldering, turn off the **Switch (#4)**.
- ☼ As you depress the **Switch (#4)** the gun will continue to heat up. Do not depress the **Switch (#4)** for long periods of time while soldering. To attain a constant temperature depress the **Switch (#4)** for 48 seconds.
 - ☼ When you let go of the **Switch (#4)**, the temperature diminishes quickly. Depressing the **Switch (#4)** quickly raises the temperature.
 - ☼ Keeping the gun at a constant temperature extends the life of the gun.
 - ☼ Before using the gun, lubricate the **Soldering Tip (#1)**.
 - ☼ This gun is energy efficient as it reaches temperature very quickly.
 - ☼ The shape of the Soldering Tip (#1) allows you to partially contact the workpiece.

PLEASE READ THE FOLLOWING CAREFULLY

THE MANUFACTURER AND/OR DISTRIBUTOR HAS PROVIDED THE PARTS DIAGRAM IN THIS MANUAL AS A REFERENCE TOOL ONLY. NEITHER THE MANUFACTURER NOR DISTRIBUTOR MAKES ANY REPRESENTATION OR WARRANTY OF ANY KIND TO THE BUYER THAT HE OR SHE IS QUALIFIED TO MAKE ANY REPAIRS TO THE PRODUCT OR THAT HE OR SHE IS QUALIFIED TO REPLACE ANY PARTS OF THE PRODUCT. IN FACT, THE MANUFACTURER AND/OR DISTRIBUTOR EXPRESSLY STATES THAT ALL REPAIRS AND PARTS REPLACEMENTS SHOULD BE UNDERTAKEN BY CERTIFIED AND LICENSED TECHNICIANS AND NOT BY THE BUYER. THE BUYER ASSUMES ALL RISK AND LIABILITY ARISING OUT OF HIS OR HER REPAIRS TO THE ORIGINAL PRODUCT OR REPLACEMENT PARTS THEREOF, OR ARISING OUT OF HIS OR HER INSTALLATION OF REPLACEMENT PARTS THEREOF.

Save these instructions.

4. MAINTENANCE

The gun and the **Soldering Tip (#1)** are designed to easily disconnect for occasional replacement.

TIP REPLACEMENT

Unscrew the two screws connecting the **Soldering Tip (#1)** to the gun. Pull off the old tip, replace it, and replace the two screws.

LAMP REPLACEMENT

ATTENTION!

1. Before using, verify the electricity requirements and visually inspect the gun and your workstand.
2. Never use the gun. in the rain.
3. Make sure no foreign objects are in the gun's internal parts.
4. Never dismantle the gun. Contact an authorized service technician.
5. Disconnect the gun from the power source when not in use.
6. This gun is primarily designed for indoor use.

5. SAFETY INSTRUCTIONS

⚠ WARNING! When using electric tools basic safety precautions should be followed to reduce the risk of fire, electric shock, and personal injury. Read the entire manual before attempting to operate the soldering gun. Save this manual.

1. Keep work area clean.

Cluttered areas and benches invite injuries.

2. Consider work area environment.

Never expose power tools to rain. Do not use power tools in damp or wet locations. Keep work area well lit. Don't use power tools near flammable liquids or gasoline.

3. Guard against electric shock.

Prevent body contact with grounded surfaces (pipes, radiators, ranges, refrigerators) when open operating power tools.

4. Keep children away from power tools.

Do not let anyone contact the tool or the power cord. Keep all visitors out of the work area.

5. Store idle tools.

When not in use, tools should be stored in a dry, out of reach, or locked location, away from children.

6. Do not force tool.

It will operate more efficiently and safer at the normal rate it was designed for.

7. Use right tool.

Don't force small tools to do the job of heavy tools. Operate tools for intended use only.

8. Dress Properly.

Do not wear loose clothing or jewelry. They may become caught in moving parts. Rubber gloves and non-skid footwear are recommended when working outdoors. Wear a protective hair covering to contain long hair.

9. Use proper safety glasses.

If necessary, use a face shield or dust mask.

10. Don't abuse cord.

Never carry the tool by the cord or yank it out of a power receptacle. Keep cord away from heat, all liquids, and sharp edges.

11. Don't overreach.

Keep proper footing and balance at all times.

12. Maintain tools with care.

For safety and performance, keep tools clean and sharp. Follow regular maintenance procedures. Inspect tool cords and extension cords periodically. If damaged, use a certified service technician to repair. Keep handle dry, clean, and free from grease or oil.

13. Disconnect tools.

Disconnect when not in use, servicing, or performing maintenance.

14. Remove adjusting keys and wrenches.

Before turning on the tool, make sure no adjustment keys or tools are connected to the tool.

15. Avoid unintentional starting.

Never carry a plugged in tool with your finger on the switch. Turn switch off before plugging it in.

16. Outdoor extension cords.

When working outdoors, use outdoor rated extension cords.

17. Stay alert.

Use common sense. Pay attention to your work. Do not operate tool when overtired.

18. Check for damaged parts.

Before using, check the tool for damaged parts to insure safe operation. Check alignment of moving parts, for broken parts, binding of moving parts, proper mounting, and any conditions that might affect safe operation. Any guard or part that is damaged should be replaced or repaired by a authorized service technician. Do not use the tool if switch does not turn on or off properly. Have defective switches replaced by an authorized service technician.

19. Warning.

Use of any accessory or attachment other than those recommended in this manual may present the risk of personal injury.

20. Authorized service technician repairs only.

This electric power tool is must only be repaired by an authorized service center. Do not repair yourself or you may cause damage to the tool and put yourself in danger.

6. TECHNICAL SPECIFICATIONS

Power:	175W
Voltage:	230V ~
Frequency:	50Hz
Insulation:	Class II

7. DISPOSAL

INSTRUCTIONS AND INFORMATION ON DISPOSAL OF USED PACKAGING.

Put any used package material to the place determined by the municipality for waste disposal.

DISPOSAL OF USED ELECTRIC AND ELECTRONIC EQUIPMENT



This symbol on products or accompanying documents means that used electric or electronic products must not be put to ordinary municipal waste.

Hand over such products to determined collection points for proper disposal, restoration and recycling. Alternatively, in some countries of the European Union or other European countries you can return your products to your local dealer when you buy an equivalent new product. By dutiful disposal of this product you can preserve precious natural resources and you help prevent any potential adverse effects on the environment and human health which could be the results of wrong waste disposal. Ask your local authority or the nearest collection point for additional details. In case of improper disposal of this waste kind penalties can be imposed in accordance with national regulations.

FOR COMPANIES IN THE EUROPEAN UNION COUNTRIES

Should you want to dispose of electric and electronic devices, ask your dealer or vendor for necessary information.

DISPOSAL IN OTHER COUNTRIES OUTSIDE THE EUROPEAN UNION



Should you want to dispose of this product, ask your local authorities or your dealer for necessary information about disposal method.

This product fulfils all basic requirements of the EU directives that apply to it.

Text, design and technical specifications can change without prior notice and we reserve the right for their change.

8. DECLARATION OF CONFORMITY

FAST[®]

FAST ČR, a.s.
 U Sanitásu 1621, 251 01 Říčany, Czech Republic
 tel.: +420 323 204 111, fax: +420 323 204 110

EU DECLARATION OF CONFORMITY

Product / brand: Soldering Gun / **FIELDMANN**

Type / model: **FDPP 2175-E** as factory model JS98-C
 AC 220 – 240 V, 50Hz, 175W, Class II

Manufacturer: FAST ČR, a.s.
 U Sanitásu 1621, 251 01 Říčany, Czech Republic
 VAT no: CZ24777749

This declaration of conformity is issued under the sole responsibility of the manufacturer.

The object of the declaration described above is in conformity with the relevant Union harmonization legislation:

Directive LVD 2014/35/EU Directive EMC 2014/30/EU
 Directive RoHS 2011/65/EU

The relevant harmonized standards and the other technical specifications:

EN 60335-1:2012+A11+A13+A1+A14+A2+A15	EN IEC 55014-1:2021
EN 60335-2-45:2002+A1+A2	EN IEC 55014-2:2021
EN 62233:2008	EN IEC 61000-3-2:2019+A1
EN 62471:2008	EN 61000-3-3:2013+A1+A2

CE

Place of issuance: Prague
Date of issuance: 22. 08. 2023

Name: Petr Uher - Responsible Person
Signature:

FAST[®] **FAST ČR, a.s.**
 U Sanitásu 1621, 251 01 Říčany
 tel.: +420 323 204 111
 IČO: 247 77 749, DIČ: CZ 247 77 749

IČO: 24777749, DIČ: CZ24777749

Bankovní spojení: Komerční banka Praha 1, č.ú. 89309011/0100, ČSOB Praha 1, č.ú. 8010-0116233383/0300
 Česká spořitelna Praha 4, č.ú. 2375682/0800

