



**EN ■ User Manual**

**Electric scooter**

**CZ ■ Uživatelská příručka**

**Elektrická koloběžka**

**SK ■ Používateľská príručka**

**Elektrická kolobežka**

**HU ■ Felhasználói kézikönyv**

**Elektromos robogó**

**PL ■ Podręcznik użytkownika**

**Hulajnoga elektryczna**



## Table of Contents

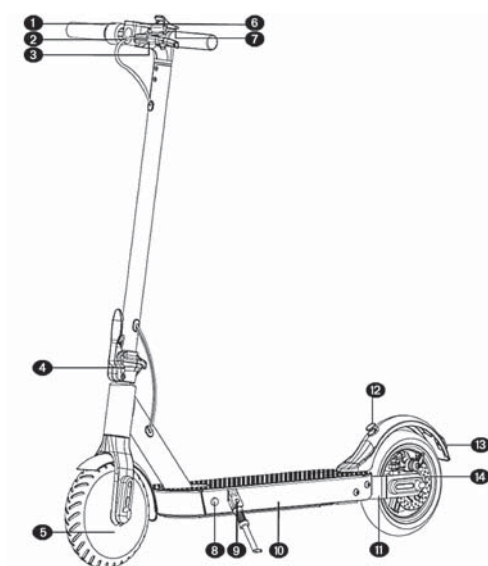
1.	Contents of the package and scooter description .....	4
1.1.	Supply content .....	4
1.2.	SCOOTER TWO LONG RANGE 2021 description .....	4
2.	Operation .....	5
2.1.	Control panel and application .....	5
2.2.	Multifunction button .....	5
2.3.	Driving modes.....	6
2.4.	Starting the operating mode.....	6
3.	Assembling the SCOOTER TWO LONG RANGE 2021 .....	7
4.	Charging .....	8
5.	Protecting the battery against excessive discharging .....	9
6.	Folding and transport .....	10
7.	Steering the SCOOTER TWO LONG RANGE 2021 .....	11
8.	Safety instructions .....	12
9.	Maintenance and adjustment .....	13
10.	Technical specifications .....	14
11.	EU Declaration of conformity .....	17

# 1. Contents of the package and scooter description

## 1.1. Supply content

- 1x Electric scooter SCOOTER TWO LONG RANGE 2021
- 1x Charging adapter
- 1x Hex key set
- 4x Handlebar fastening screw
- 1x User's manual

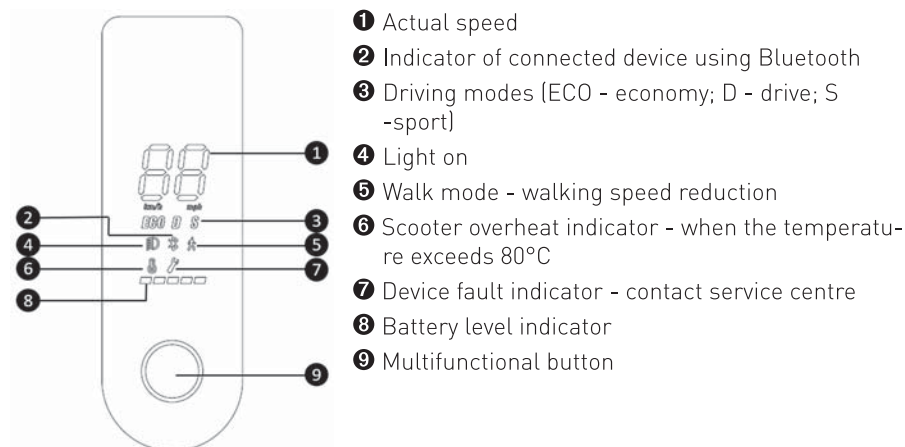
## 1.2. SCOOTER TWO LONG RANGE 2021 description



- |   |  |
|---|--|
| ① Speed control                         | ⑪ Rear swingarm                                |
| ② LED light                             | ⑫ Notch to retain the handlebar in folded mode |
| ③ Mechanical brake and bell             | ⑬ Rear LED light/brake light                   |
| ④ Folding mechanism release lever       | ⑭ Mechanical disc brake                        |
| ⑤ Electric motor / front electric brake |  |
| ⑥ Power on/off/control panel            |  |
| ⑦ Transport mode lock hook              |  |
| ⑧ Charging connector                    |  |
| ⑨ Stand                                 |  |
| ⑩ Battery compartment                   |  |

## 2. Operation

### 2.1. Control panel and application



While using your SCOOTER TWO LONG RANGE 2021, you can also use “**SENCOR SCOOTER**” mobile app available for download at Google Play a and Apple APP Store. This app offers users for example number of kilometers ridden, cruise control setting function and many others. For more information about the app / user's manual, please refer to [www.sencor.cz](http://www.sencor.cz) website.

### 2.2. Multifunction button



**CAUTION:**

**The adjustment of riding properties should always be performed before starting the ride.**

- 1) Short press the multifunction button while the power is off to turn the SCOOTER TWO LONG RANGE 2021 on.
- 2) Hold down the multifunction button for 2 seconds while the power is on to turn the SCOOTER TWO LONG RANGE 2021 off.
- 3) Short press the multifunction button while the power is on to turn on the LED flashlight.
- 4) When switched on, a short double-press of the multi-function button switches between driving modes.

## 2.3. Driving modes

Switching between driving modes is done by double-clicking the multi-function button.

<b>Walk</b>	up to 6 km/h
<b>Eco</b>	up to 10 km/h
<b>Drive</b>	up to 20 km/h
<b>Sport</b>	up to 25 km/h

## 2.4. Starting the operating mode

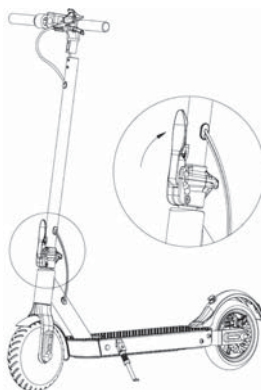
- 1) Turn on the scooter.
- 2) Press and hold the speed control fully until the display shows 16.
- 3) Hold the gear lever and press the brake lever at the same time.
- 4) Release the brake lever.
- 5) You will be switched to the last set driving mode.

**WARNING:**

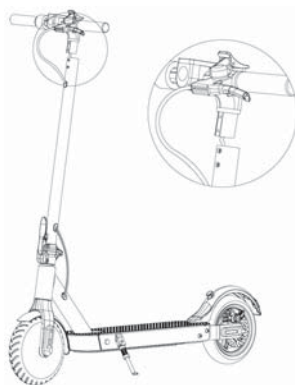
**Always start the operating mode when the SENCOR SCOOTER TWO LONG RANGE 2021 is not in motion.**

### 3. Assembling the SCOOTER TWO LONG RANGE 2021

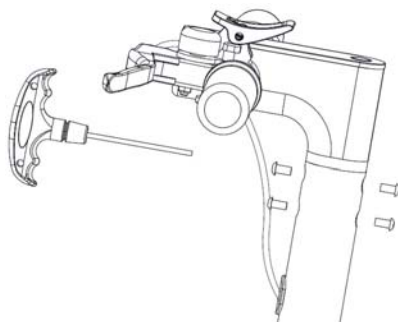
1. Unfold the handlebar rod and secure it firmly with the lock lever.



2. Make sure that the control unit connectors are connected to the control panel. The connector with the cords must be connected properly to avoid loosening later on.



3. Carefully connect the handlebar with the handlebar tube. Take care to avoid damage to the connecting wire while it's being inserted into the steering tube. The LED flashlight must point in the ride direction.
4. Screw the handlebar and the handlebar tube together. Insert two hex screws from the front and two hex screws from the opposite side as shown. Tighten the screws firmly. Regularly check if the screws don't get loose while using the product.

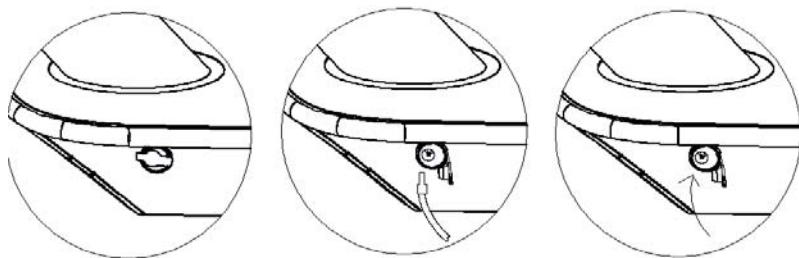


5. Turn on the SCOOTER TWO LONG RANGE 2021

## 4. Charging

Check if the battery is fully charged before starting your ride. Turn on the control panel and check the battery level.

The charging is performed with the supplied charging adapter. First remove the rubber cap of the charging connector in the SCOOTER TWO LONG RANGE 2021 and connect the charging adapter. Then connect the adapter to your power outlet. When the charging process is finished and the charging adapter is disconnected, cover the charging connector opening again with the rubber cap. Regularly check if the protective cap covers the charging connector whenever the charging does not take place.



The charging indicator is located on the charging adapter and shows 2 statuses as follows:

1. **Red LED:** Indicates the battery charging process
2. **Green LED:** Indicates the battery is fully charged



**CAUTION:**

**For charging, use only the original accessories supplied with the appliance. When the battery operating time becomes very short, the battery lifetime has been used up; we recommend that you have the battery replaced at your authorized centre.**

**CAUTION:**

**Please check the battery location area after each ride. In case of a mechanical damage near the battery, the scooter must not be stored in enclosed spaces.**

**Recommendation:**

If the unit is not to be used for an extended period of time, we recommend to fully charge the battery once every two to three months. We do not recommend storing the unit with a flat battery to prevent irreparable damage to the battery (loss of capacity).

## 5. Protecting the battery against excessive discharging

The electric scooter is equipped with the protection of each component against damage due to operational overload and lower battery charging level.

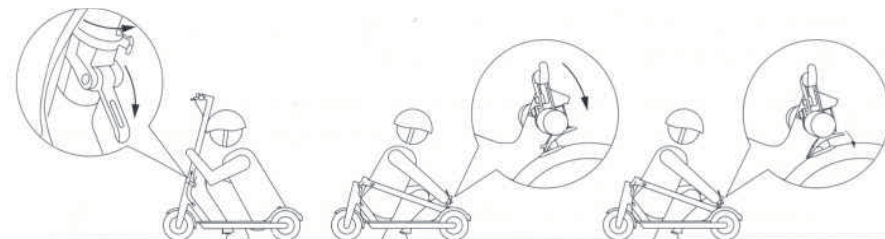
1. If the scooter is subject to a higher load for example due to frequent riding uphill or riding up a steep hill, the control unit/battery overheating protection will be enabled, limiting the power for a necessary period of time. The speed will be reduced to a maximum of 15km/h.
2. If the battery level drops below 30%, the maximum scooter speed will be limited to 15km/h. If the battery level drops below 25%, the maximum speed will be limited to 10km/h.

**CAUTION:**

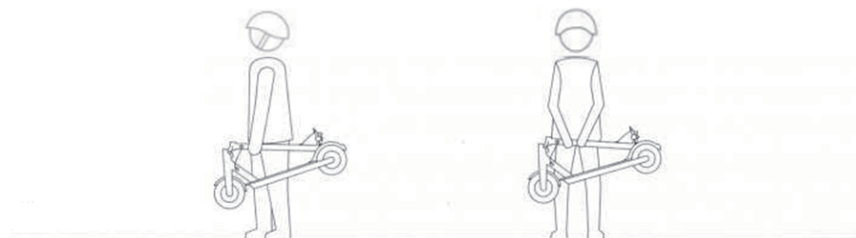
**Do not repair and/or tamper with the electric scooter (SCOOTER TWO LONG RANGE 2021) protection mechanisms. This will prevent the damage to the individual components of the electric scooter (SCOOTER TWO LONG RANGE 2021).**

## 6. Folding and transport

1. The scooter must be turned off. Hold the scooter, unlock the folding mechanism release lever at the bottom of the handlebar tube and push the released level in the ride direction.



2. Fold the released handlebar tube towards the rear mudguard and lock it using the hook on the handlebar and notch on the rear mudguard. Correct transport mode folding
3. To carry the scooter, hold the SCOOTER TWO LONG RANGE 2021's handlebar tube. For more convenient transport, we recommend to hold the handlebar tube in one third of its length on the side near front wheel.



## 7. Steering the SCOOTER TWO LONG RANGE 2021

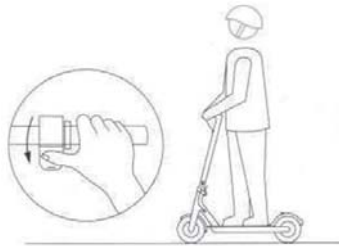
**CAUTION:**

- Before each ride, use helmet and protectors to prevent injury in case of falling.
- Before each ride, please check if the mechanical brake is fully functional.

1. Place one foot on the scooter tread and gently bounce off the ground with the other foot.

**CAUTION:**

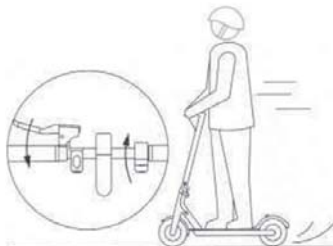
- Always push off on the side where the scooter stand is not located.



2. Once the scooter is in motion, press the speed control lever to start the motor. As soon as the scooter starts on its own, place the other foot on the scooter surface.

**Note:**

Motor starting and speed control of your electric scooter can be performed when 5km/h speed is reached.



3. Stopping is essential for safe driving. First release the speed control and then push the mechanical hand brake on the left side of the handlebar.
4. Try the first turns on a flat surface and at slow speed. To turn, move your centre of gravity slightly by tilting gently to the desired direction of travel and slowly turning the handlebars.

## 8. Safety instructions

This electric SCOOTER TWO LONG RANGE 2021 is designed for entertainment and recreational use. This is not a means of transport. Observe the safety of everyone in both private and public areas, follow the instructions below as well as local traffic regulations.

When meeting pedestrians, pay close attention to your ride and make sure pedestrians are aware of your presence. If you are outside their angle of view, ring the bell, slow down and overtake (overtake from the left in case of right-hand traffic).

Higher driving speed means automatically a longer braking path. Keep safe speed in case of unexpected need to stop and keep a safe distance from others. Even on a flat surface, you may encounter situations or terrain that cause you to lose balance, skid or other unexpected situations that can cause you to fall. Always pay close attention to driving.

Check the mechanical brake, battery charge status, wear of components and wheels before each ride. In case of loose parts or unusual noises, carry out a thorough check and contact an authorized service centre if necessary.

**Neither the manufacturer nor the distributor are liable for any financial damages, injuries, accidents, legal disputes or conflicts resulting from non-observance of the safety instructions.**

- Do not drive in the rain and avoid slippery surfaces.
- If you encounter an obstacle on your way, stop and carry the scooter over the obstacle.
- Exercise caution when passing through low ceilinged areas.
- Do not accelerate downhill and always brake well in advance.  
If you encounter a steep descent (e.g. a steep hill), stop and guide your scooter.
- Do not add speed while pushing the scooter.
- Always avoid obstacles.
- Avoid carrying heavy luggage on the handlebar.
- Always keep both feet on the scooter tread while riding.
- Operate SCOOTER TWO LONG RANGE 2021 in designated driving areas. Observe the local regulations of the regions, parks, cities and states where you want to operate the scooter.
- Do not turn sharply at high speeds.
- Do not ride through puddles, water or in rain.

- Do not ride with other person even in case of children.
- Do not step on the mudguards.
- Do not touch the brake components.
- Always hold on the handlebar.
- Do not try to ride up the stairs, down the stairs or jump with your scooter.

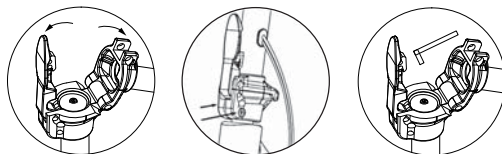
## 9. Maintenance and adjustment

The brake mechanism must be adjusted before the first ride. Contact a specialized provider (e.g. a bike service) for proper adjustment. Adjustments cannot be made under warranty or post-warranty service at the manufacturer or distributor.

If the brakes are too tight or too loose, use a 4mm hex key and loosen the brake screw anticlockwise to adjust the brake cable length. Then tighten the screw firmly. To fine tune, adjust the brake cable tension by turning the nut on the mechanical brake attached to the handlebar.



In the transport mode, there is a screw (4mm Allen) accessible in the handlebar tube joint to tighten its fastening. Before tightening the hex screw in the handlebar tube joint, the hex screws in the joint socket must be loosened first as shown by the arrows on the figure.



## 10. Technical specifications

SCOOTER TWO LONG RANGE 2021	
<b>Key features</b>	
Maximum speed up to 25km/h	
Travel range up to 45km	
Rear wheel suspension	
Aluminium framework	
SENCOR SCOOTER app available at Google Play and APP Store	
LED lighting	
LED display (mode, speed, battery, lighting, Bluetooth)	
<b>Drive</b>	
Engine power	400W
Speed	Walk up to 6 km/h
	Eco up to 10 km/h
	Drive up to 20 km/h
	Sport up to 25 km/h
Range	up to 45km @ 55kg weight
	up to 37km @ 90kg weight
Cruise control	Yes
Maximum climb angle	up to 15°
<b>Wheels</b>	
10-inch front and rear perforated tires	
Dual braking system - electrical and mechanical	
Disc brake	
<b>SENCOR SCOOTER app</b>	
Available at Apple App Store and Google Play	
Using application security lock	
Range, distance ridden, running time, speed, battery level, etc.	
Bluetooth 4.0	
<b>Technical specifications</b>	
Maximum load	120kg
Dimensions	112 x 44 x 118cm (unfolded)
	112 x 44 x 51cm (folded)
Weight:	16kg
Working temperature	0 to 40°C
Storage temperature	0 to 45°C
<b>Adapter</b>	
Input voltage	100-240V AC 50/60 Hz
Input current	2A

Output voltage	42V
Connector	Φ 5.5 x 10mm
<b>Battery</b>	
Capacity	15Ah Li-ion
Charging time	max, 9 hours
Number of cells	50
Protection against	short-circuit, overvoltage, overcharging, overheating
Battery protection against	excessive discharge
Input charging voltage	42V
Rated voltage	37V

Charging adapter	Value and accuracy	Unit
Manufacturer's name or trademark, company ID and address	JIN XIN YU POWER (SHENZHEN) SUPPLY CO., LTD XVE No.38, yuanxin roadm, tongle longgang area, shezhen, guandong 914403003601080704W	-
Model identification code	XVE083-4200200	-
Input voltage	AC 110-240	V
Input frequency	50/60"	Hz
Output voltage	DC 42.0	V
Output current	2.0	A
Output power	84.0	W
Average efficiency in active mode	86	%
Efficiency at low load (10%)	85.7	%
No load power consumption	0.18	W

<b>Bluetooth</b>	
Version	4.0
Maximum Transmitter Power	100mW @ 2.4GHz - 2.4835GHz

<b>NOISE EMISSIONS</b>	
The weighted sound pressure level of a moving vehicle is less than 70dB [A].	

**INSTRUCTIONS AND INFORMATION ON DISPOSING OF USED PACKAGING MATERIALS**

Take the packaging material to a designated municipal waste facility.

**DISPOSING OF USED ELECTRICAL AND ELECTRONIC EQUIPMENT**

This symbol on products or original documents means that used electric or electronic products must not be added to standard municipal waste. For proper disposal and recycling, take these products to designated collection points. Or in some European Union states or other European countries the products can be returned to the local retailer when buying an equivalent new product. Correct disposal of this product helps save valuable natural resources and prevents damage to the environment caused by improper waste disposal. Ask your local authorities or collection facility for more details. In accordance with national regulations penalties may be imposed for the incorrect disposal of this type of waste.

**For business entities in European Union states**

If you want to dispose of electric or electronic devices, ask your retailer or supplier for the necessary information.

**Disposal in other countries outside the European Union**

This symbol is valid in the European Union. If you wish to dispose of this product, request the necessary information about the correct disposal method from the local council or from your retailer.



FAST ČR, a.s. hereby declares that the radio device type SCOOTER TWO LONG RANGE 2021 conforms to the 2014/53/EU directive.

Changes in the text, design and technical specifications may be made without prior notice and we reserve the right to make such changes.

The original version of the instructions is in the Czech language, other language versions are made by the appropriate translation.



**FAST®****FAST ČR, a.s.**Černokostelecká 1621, 251 01 Říčany, Czech Republic  
tel.: +420 323 204 111, fax: +420 323 204 110**EU DECLARATION OF CONFORMITY****Product / brand:** ELECTRIC SCOOTER / SENCOR**Type / model:** SCOOTER TWO LONG RANGE 2021 as factory model E9 MAX  
DC 37,0V (Li-ion battery 15Ah), IPX4, Class III  
Adapter Input AC 100-240; 50/60 Hz; 2,0A; Class II; IP20  
Output DC 42,0V; 2,0A; 84,0W**Manufacturer:** FAST ČR, a.s.  
Černokostelecká 2111, 100 00 Praha 10, Czech Republic  
VAT no: CZ26726548**The object of the declaration described above is in conformity with the relevant Union harmonisation legislation:**

Directive MD 2006/42/EC	Directive LVD 2014/35/EU
Directive RED 2014/53/EU	Directive EMC 2014/30/EU
Directive Noise 2000/14/EC	Directive RoHS 2011/65/EU

**The relevant harmonised standards and the other technical specifications:**

EN 60335-1:2012+AC+A11	EN 60950-1:2006+A11+A1+A12+A2
EN 62233:2008	EN IEC 61000-6-1:2019
EN 55014-1:2017	EN 61000-6-3:2007+A1+AC
EN 55014-2:2015	EN 14619:2015
EN IEC 61000-3-2:2019	EN ISO 12100:2010
EN 61000-3-3:2013+A1	EN 60204-1:2006+A1+AC
EN 62479:2010	EN 300 328 V2.1.1
EN 301 489-1 V2.2.0	EN 301 489-17 V3.2.0
EN 17128:2020	

**Place of issuance:** Prague**Name:** Ing. Zdeněk Pech  
Chairman of the Board**Date of issuance:** 11. 1. 2021**Signature:**

**FAST®** FAST ČR, a.s. ©  
Černokostelecká 1621, 251 01 Říčany  
IČO: 26726548 tel.: +420/ 323 204 111  
DIČ: CZ26726548 fax: +420/ 323 204 110

IČO: 26 72 65 48, DIČ: CZ-26 72 65 48

**Bankovní spojení:** Komerční banka Praha 1, č.ú. 89309011/0100, Česká spořitelna Praha 4, č.ú. 2375682/0800,  
ČSOB Praha 1, č.ú. 8010-0116233383/0300

# SENCOR®

## EN Warranty conditions

**Warranty card is not a part of the device packaging.**

This product is warranted for the period of 24 months from the date of purchase to the end-user. Warranty is limited to the following conditions. Warranty is referred only to the customer goods using for common domestic use. The claim for service can be applied either at dealer's shop where the product was bought, or at below mentioned authorized service shops. The end-user is obligated to set up a claim immediately when the defects appeared but only till the end of warranty period. The end user is obligated to cooperate to certify the claiming defects. Only completed and clean (according to hygienic standards) product will be accepted. In case of eligible warranty claim the warranty period will be prolonged by the period from the date of claim application till the date of taking over the product by end-user, or the date the end-user is obligated to take it over. To obtain the service under this warranty, end-user is obligated to certify his claim with duly completed following documents: receipt, certificate of warranty, certificate of installation.

### **This warranty is void especially if apply as follows:**

- Defects which were put on sale.
- Wear-out or damage caused by common use.
- The product was damaged by unprofessional or wrong installation, used in contrary to the applicable instruction manual, used in contrary to legal enactment and common process of use or used for another purpose which has been designed for.
- The product was damaged by uncared-for or insufficient maintenance.
- The product was damaged by dirt, accident of force majeure (natural disaster, fire, and flood).
- Defects on functionality caused by low duality of signal, electromagnetic field interference etc.
- The product was mechanically damaged (e.g. broken button, fall).
- Damage caused by use of unsuitable media, fillings, expendable supplies (batteries) or by unsuitable working conditions (e.g. high temperatures, high humidity, quakes).
- Repair, modification or other failure action to the product by unauthorized person.
- End-user did not prove enough his right to claim (time and place of purchase).
- Data on presented documents differs from data on products.
- Cases when the claiming product cannot be indentified according to the presented documents (e.g. the serial number or the warranty seal has been damaged).

### **Authorized service centers**

Visit [www.sencor.com](http://www.sencor.com) for detailed information about authorized service centers.