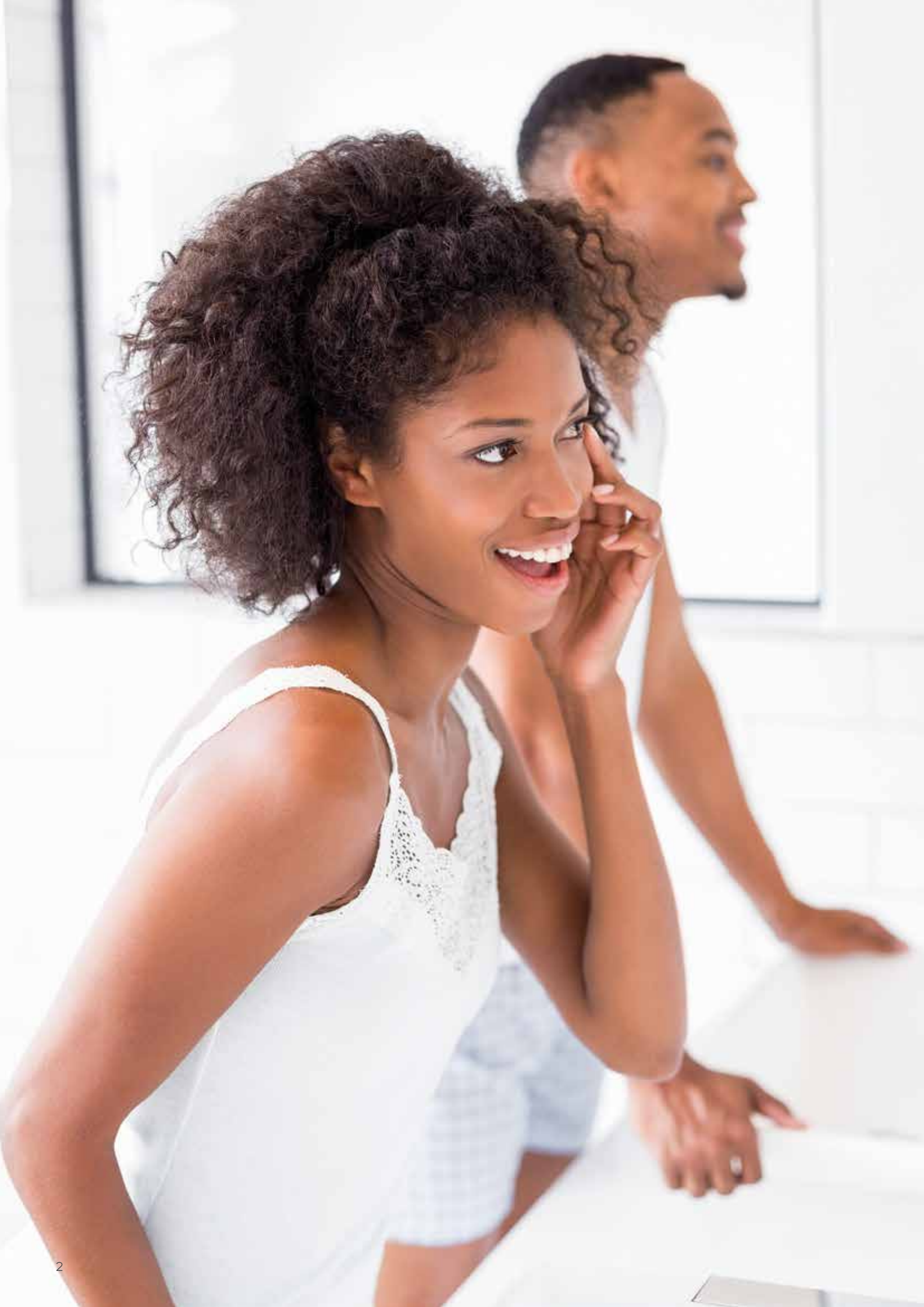


SENCOR®

PERSONAL CARE
2022/2023



OVERVIEW OF PERSONAL CARE CATEGORIES:

HAIR CARE

- FLAT IRONS

- CURLING IRONS

- HAIR DRYERS

MEN'S HAIR CLIPPERS AND ELECTRIC SHAVERS

- HAIR CLIPPERS

- ELECTRIC SHAVERS

DENTAL CARE

- SONIC TOOTHBRUSHES

- ORAL IRRIGATORS

HEALTH CARE

- PERSONAL SCALES

- SMART KITCHEN SCALE

- BLOOD PRESSURE MONITORS

BODY CARE

- ELECTRIC BLANKETS



SENCOR

INNOVATIVE PRODUCTS TO CHERISH YOUR HEALTH AND PAMPER YOUR BEAUTY

In the early 70's in Japan, SENCOR set out on an exciting journey to deliver product innovation and variety, different and original designs, colours, unique features and availability. The product portfolio may have changed to reflect the new needs of people around the world, but the passion to deliver well-designed products highly valued by customers at a reasonable price remains unchanged.

We have only one life to live. SENCOR health and beauty products are here to pamper and help, offering countless personal choices when it comes to hair dryers, curling irons, flat irons, clippers, shavers, electric toothbrushes, oral irrigators, blood pressure monitors, personal scales and electric blankets. All are designed with and for care.

With SENCOR, health and beauty are no longer at odds. Our hair dryers create stunning hairdos, while using advanced functions to ensure hair and overall health: ionisation maintains lively and shiny hair, and the special hairdryer surface features an antibacterial treatment. And the flat and curling irons don't lag too far behind: there are up to 14 different temperature settings to provide gentle styling with unparalleled results and

an ionisation function with an antistatic effect that protects hair from overdrying.

Today's men understand the importance of being well-groomed, and with the help of SENCOR clippers and shavers, daily shaving and styling is an easy task. With an emphasis on safe and comfortable use, men with all skin types can now enjoy barber-quality styling at home. Super-easy maintenance ensures the clippers and shavers are always clean and ready for hygienic use to the highest standard.

SENCOR electric toothbrushes care for both teeth and gums, offering various pre-set programs to suit even those with different health conditions. Their operating speed and gentle bristles provide effective cleaning and protect against cavities and gum disease. But there is even more: oral irrigators provide extra care, using a stream of high-pressure pulsating water to remove plaque and food particles from between teeth and below the gum line. Such treatment is highly appreciated not only by people with braces and dental implants, which are tricky to clean, but also by anyone wishing to maintain perfect oral health.



SENCOR says yes! Our stressful jobs and busy lifestyles may lead to hypertension regardless of age. At-home examinations are therefore an important part of health care, offering the possibility of diagnosing blood pressure disorders and getting necessary medical treatment, or having the certainty that everything is fine.

Body weight – well, it can be a bit of an issue. Be in control of your body weight with one of the personal scales featuring advanced tracking functions such as muscle or body fat weight, bone weight, body water weight, Body Mass Index (BMI), or Basal Metabolic Rate (BMR). The state-of-the-art models come with Bluetooth, connecting the scale with the SENCOR app, which keeps a history of all measurements, describes the trends and generates reports to help you reach your desired body shape.

During cold days throughout the year, you will surely appreciate an electric blanket. Forget about the tiny blankets of the past. Today's electric blankets are big enough to heat up a double bed. With two controllers, each side of a bed can set its own temperature. Can you feel the pleasure of spending a chilly evening in a warm bed with a good book to read?

So, don't hesitate and enter our world of modern healthcare and beauty appliances to see that innovations are not something SENCOR just talks about.

At SENCOR, product development is a way of life.

WHY CHOOSE SENCOR

Decades of experience from all the world's markets enable us to produce successful appliances for personal care. **Our hair dryers and irons featuring ionisation** deliver both precise styling and gentle care, together with health protection ensured by their antibacterial surfaces. Men will appreciate **shavers with advanced 4D technology**, which adapt to any face shape, leaving it professionally groomed without a sign of irritation. Family oral health is within reach thanks to **electronic sonic toothbrushes and oral irrigators with the unique Quadpacer feature**. To stay in control of both your health and comfort, a **smart body scale linked to a mobile app, accurate home blood pressure monitors and generously-sized electric blankets** are here to help. Combined with durability and reasonable prices, our appliances are ready to deliver unique value for your health and beauty.

HAIR CARE

Show the whole world how great your hair can be. With a few modern beauty helpers, your hairstyle will soon be ready to impress. Find your ideal hair dryer, see the newest flat irons, and see how it feels to have curly hair. Our top modern appliances do their best to convince you that going to the hairdresser is no longer necessary; our devices can now provide the style and hair care you need to look like a movie star.





STRAIGHT

TO YOUR STUNNING
HAIR SHAPE

FLAT IRONS

When an occasion or your mood calls for straight hair, a flat iron is the best tool, no matter the kind of hair nature has blessed you with.

For such a small appliance, our flat irons possess numerous advanced features to deliver an outstanding user experience. Up to 14 different temperature settings can be selected to suit your hair, while the titanium surface delivers an unparalleled elegant look, and a special brush attachment ensures everything looks natural. Steam moistening ensures the gentlest care, while an argan oil applicator supports extra-nourished and glossy hair. As far as comfort is concerned, SENCOR flat irons do their best to make your styling as easy and effortless as it gets. The ultra-light design keeps your hands from tiring, while the 360 ° swivel helps avoid any tangled cords. Moreover, freedom of movement is provided by an extra-long power cord with a protective textile coating.

So, don't hesitate. Choose the right flat iron for you and get the elegant look you've always wanted.

WHY CHOOSE A SENCOR FLAT IRON

- Titanium-coated ironing plates for optimal heat transfer and elegant results
- Slim design, ideal for hair straightening and styling
- Up to 14 different temperature settings to suit any hairstyle
- Ultra-light design for effortless styling
- Long power cord with protective textile coating and 360° swivel

STEAM MOISTENING CARE

With SENCOR flat irons, there's no need to worry about daily use. The steam moistening feature protects the beauty of your hair and ensures gentle treatment despite frequent styling. Because SENCOR truly cares.

EVERYDAY STYLING





Flat Iron

SHI 5600GD

An unparalleled choice for those expecting their flat iron to do more than just straighten.

One special brush attachment maintains your hair's natural look, while another combs out your hair while ironing. To deliver extra nourished and glossy hair, an applicator of argan oil is included. The 14 temperature settings, titanium-coated ironing plates and slim design deliver comfort and impressive results.



100-230 °C



360° SWIVEL



TITANIUM SURFACE
on the ironing plates



ARGAN OIL
applicator for extra hair nourishment



FEATURES

- **Power input: 55 W**
- **Slim design ideal for hair straightening and styling**
- **14 temperature settings from 100-230 °C**
- Titanium-coated ironing plates for maximum comfort and elegant results
- 180-cm long power cord with protective textile coating and 360° swivel

ACCESSORIES

- Special attachment to evenly apply the argan oil when ironing
- Hair straightening brush attachment to maintain a natural appearance
- Attachment for combing out hair while ironing



Flat Iron

SHI 5300GD

Perfect results and gentle care? Yes, thanks to this flat iron featuring titanium coated ironing plates and steam moistening.

With the help of the hair straightening brush, your hair can look truly natural. No matter whether you are straightening hair or styling locks, the four temperature settings with optimal heat transfer ensure great results. The ultra-light design and display with a white backlight make everyday styling fun.

FEATURES

- **Power input: 50 W**
- **Hair straightening brush for maintaining a natural appearance**
- **Steam moistening for the gentlest care and perfect results**
- 4 temperature settings: 170/190/210/230 °C
- Ultra-light design and display with white backlight

STEAM MOISTENING



HAIR STRAIGHTENING BRUSH



360° SWIVEL

TITANIUM SURFACE
on the ironing plates



Flat Iron

SHI 5500GD

The titanium-coated ironing plates operate at 14 temperature settings (100–230 °C) to provide optimal heat transfer for elegant results. Thanks to its slim design, this flat iron is ideal for hair straightening and styling.

Moreover, special attachments enable hair combing while ironing. Great comfort when handling the iron is ensured by its ultra-light design, display with white backlight, and a long power cord (180 cm) with 360° swivel to prevent twisting and tangling.

FEATURES

- **Power input: 50 W**
- **14 temperature settings (100–230 °C) for personalised styling**
- **Titanium-coated ironing plates provide optimal heat transfer**
- Power cord with protective cover for maximum safety
- Display with white backlight



100–230°C



SUITABLE
for dry and moist hair



SUITABLE
for dry and moist hair

Flat Iron

SHI 5200GD

This ultra-light flat iron features four temperature settings 170/190/210/230° C and titanium-coated ironing plates to deliver elegant results.

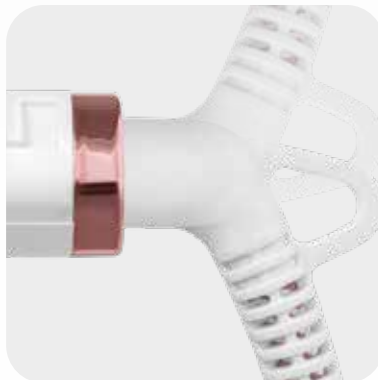
The gentlest care is ensured by steam moistening, and unbeatable comfort is delivered by the power cord which swivels 360° to prevent twisting and tangling. Safety is assured with the open-and-close safety lock and protective textile on the power cord.

FEATURES

- **Power input: 50 W**
- **Steam moistening for the gentlest care and perfect results**
- **Slim design ideal for straightening hair and styling locks**
- Ultra-light design, only 295 g
- Ironing surface with optimal heat transfer for more comfortable use
- Display with white backlight



170–230°C



360° SWIVEL

TITANIUM SURFACE
on the ironing plates



Flat Iron

SHI 4500GD

Featuring infrared heating and titanium-coated ironing plates, this flat iron delivers gentle care, comfort and elegant results.

14 temperature settings from 100° C to 230° C, together with a slim design, make it an ideal tool for straightening hair and styling locks. Comfortable use is enhanced by its ultra-light design (only 300g) and a display with a white backlight.

FEATURES

- **Power input: 60 W**
- **Infrared heat up for gentle care**
- **Slim design ideal for straightening hair and styling locks**
- Titanium-coated ironing plates for maximum comfort and elegant results
- Ultra-light design, only 300 g
- Comfortable and safe to use thanks to the 180-cm long power cord with 360° swivel



STEAM MOISTENING



TITANIUM SURFACE
on the ironing plates



Flat Iron

SHI 4400GD

To deliver the gentlest care, this flat iron features infrared heating and 14 different temperature settings from 100 to 230° C. Elegant results are achieved with its slim design, which is ideal for hair straightening and styling.

Handling is super-easy too, thanks to its ultra-light design (only 250g) and 180-cm long power cord with 360° swivel, while optimal heat transfer is ensured by titanium-coated ironing plates. The display with a white backlight gives you full control of the process.

**FEATURES**

- **Power input: 45 W**
- **Infrared heat up for gentle care**
- **14 temperature settings 100–230 °C**
- Titanium-coated ironing plates for elegant results



Flat Iron

SHI 6300GD

Straight hair, slightly wavy or with distinctive crimping?

Change your look every day with the three types of interchangeable ironing plates that this hair iron features. Four temperature settings (140/160/180/200° C) and titanium-coated ironing plates provide everything you need for maximum comfort and elegant results.

FEATURES

- **4 temperature settings 140/160/180/200 °C**
- **180-cm long power cord with 360° swivel and protective cover for maximum safety**
- **Display with white backlight**

ACCESSORIES

- Completely smooth ironing plate for straight ironing
- Slightly wavy ironing plate for light crimping
- Very wavy ironing plate for distinctive crimping

Flat Iron

SHI 3100VT

Choose one of five temperature settings (150/170/190/220/230° C) of the ironing surface to achieve the desired look!

Titanium-coated ironing plates and an ultra-light design ensure uncompromising comfort, while the 180-cm long power cord covered with protective textile provides maximum safety.

**FEATURES**

- **Power cord swivels 360 ° to prevent twisting and tangling**
- **Ultra-light design, only 235 g**
- **Digital display with elegant white backlight**

Flat Iron

SHI 1100BK

This flat iron with passive ionisation technology is ideal for both hair straightening and styling.

The titanium-coated ironing plates ensure optimal heat transfer, providing maximum comfort and delivering the best results possible. Use has never been this easy, thanks to its ultra-light design (only 235 g) and long 360° swivel power cord that prevents twisting and tangling. An open-and-close lock and covered power provide maximum safety.

**FEATURES**

- **Power input: 45 W**
- **Ultra-light design, only 235 g**
- **360° swivel power cord to prevent twisting and tangling**
- 180-cm long power cord for maximum comfort
- Passive ionisation technology

Flat Iron

SHI 131BK

The PTC technology used in this flat iron provides fast heating, while the combined ceramic tourmaline technology enables hair to glide smoothly along the pressing surface.

Moreover, the special floating, pressing surfaces protect hair from damage with no need to apply heavy pressure.

**FEATURES**

- **LED operation indicator and a display showing the current temperature**
- **360° swivel power cord to prevent twisting and tangling**
- **Integrated lock for convenient storage**

Flat Iron

SHI 110BK

Advanced technologies, such as PTC heating and tourmaline ceramics, deliver fast heating and smooth hair straightening.

Styling is extraordinarily easy thanks to the 360° swivel power cord that prevents it from getting tangled.

**FEATURES**

- **PTC technology for rapid plate heating and temperature operation**
- **Special floating sole plate construction prevents hair damage and reduces the pressure needed**
- **The power cable with 360° swivel to prevents twisting and tangling**



HAVE FUN,
HAVE CURLS

CURLING IRONS

Born with straight hair but eager to go curly? No need to get a perm; our curling irons will let you change your look every other day. All you have to do is decide the size of your new curls, and the curling iron with its brushes will do the rest. Up to seven easily interchangeable attachments offer tremendous styling options, and the cold air function, which delivers extra long-lasting styling, can be used anytime while using the curling iron.

As far as hair health is concerned, the ionisation function with an anti-static effect provides gentle care, which can be augmented by an appropriate selection between two temperature levels.

Your comfort is in no way compromised: adapters are easy and quick to change, and the 360° swivel cord helps avoid any twisting or tangling.

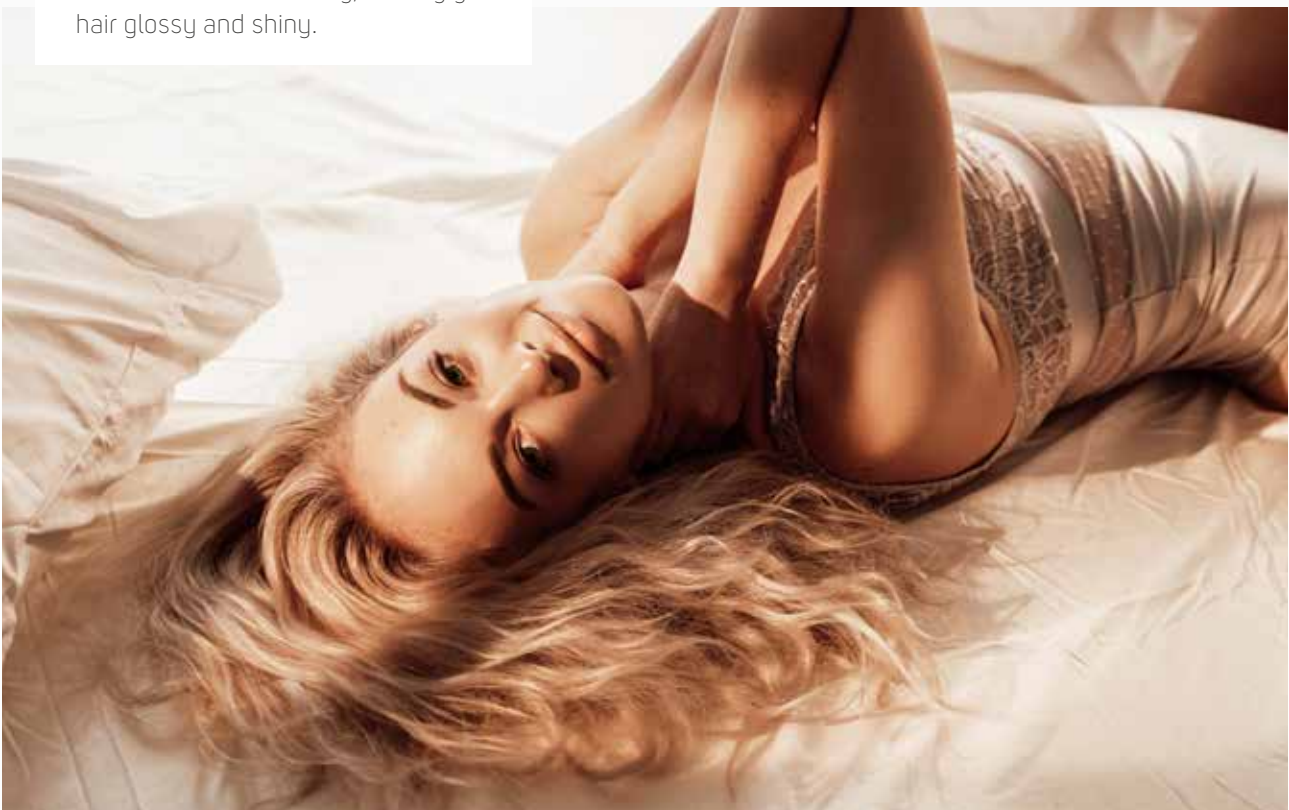
WHY CHOOSE A SENCOR CURLING IRON

- Ionisation function with antistatic effect
- 7 exchangeable attachments and two temperature levels for uncompromising styling options
- Cold air button for long-lasting styling
- Easy and quick-to-change adapters with a fuse and hanging loop
- 360° swivel cord eliminates twisting and tangling

THE MIRACLE OF IONISATION

No more tangling and struggling with static electricity when styling your hair! Our ionisation feature automatically removes static electricity, leaving your hair glossy and shiny.

LET IT SHINE





Automatic Hair Curler

SHS 0900GD

Want to give yourself the perfect curls anytime? That won't be a problem with the SHS 0900GD automatic hair curler. Its titanium barrel delivers fast curling hair that is smooth and shiny.

Eleven temperature settings (ranging from 120 to 220 °C) suit any type of hair. It's ready in just 45 seconds, and the curler is highly customizable with 5 rotation speeds and 10 different time settings (3–12 s). Give your hair perfectly symmetrical curls with a curler rotation in both directions.



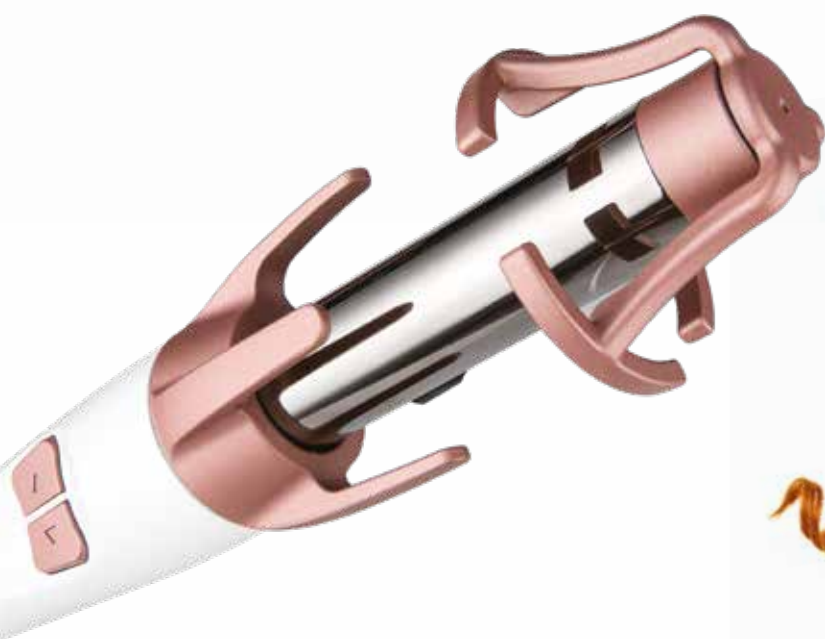
360° SWIVEL



TITANIUM SURFACE
on the ironing plates

FEATURES

- **Titanium barrel for fast curling hair that is smooth and shiny**
- **11 temperature settings (120–220 °C) for different types of hair**
- **Digital display with white backlight**
- High performance heater for rapid heat-up in 45 s
- 5 rotation speeds, 10 time settings (3–12 s)
- Curling in both directions
- 2 m cord ensures improved flexibility
- Clever heat proof design to protect fingers
- Tangle-free innovative construction
- Travel case for added comfort and ease of transport

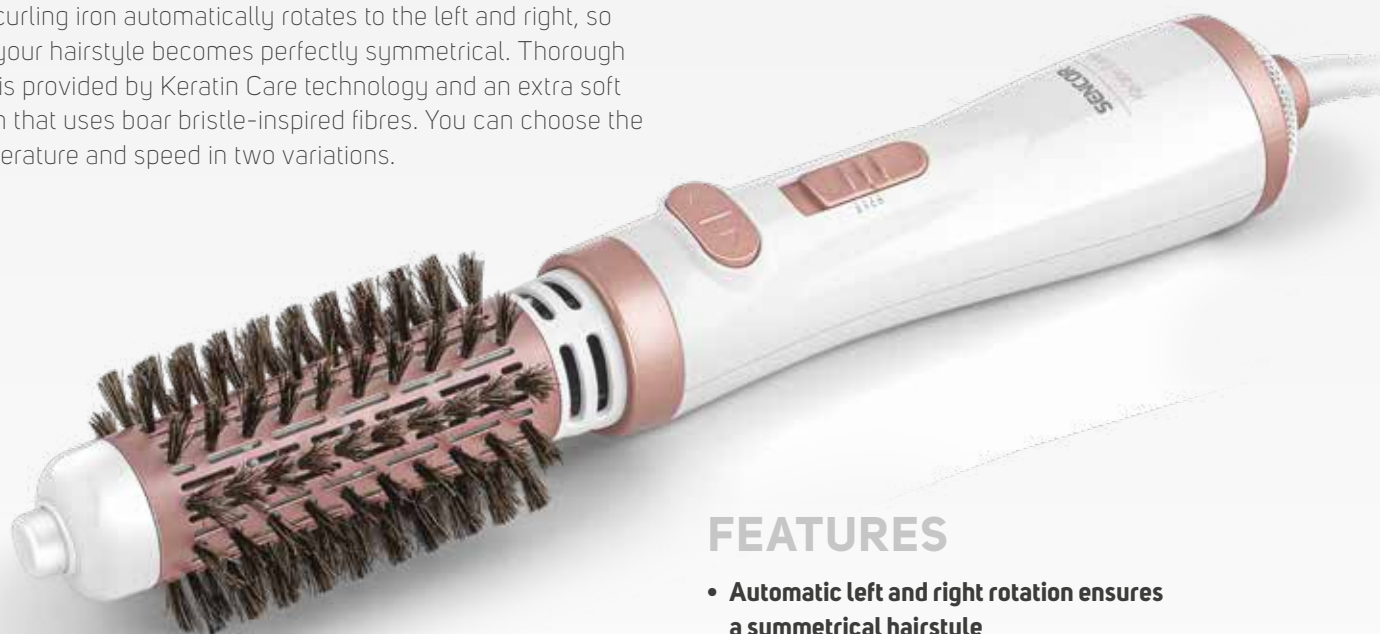


Hot Air Curling Iron

SHS 0910GD

Create perfect waves quickly and easily with this hot air curling iron.

The curling iron automatically rotates to the left and right, so that your hairstyle becomes perfectly symmetrical. Thorough care is provided by Keratin Care technology and an extra soft brush that uses boar bristle-inspired fibres. You can choose the temperature and speed in two variations.



FEATURES

- Automatic left and right rotation ensures a symmetrical hairstyle
- Hair care with Keratin Care+ technology and BoarBristles extra soft brush
- Two speed and two temperature settings
- Handy hanging loop and 360° swivel cord



TWO-WAY ROTATION
for a symmetrical hairstyle



COLD AIR FUNCTION
for long-lasting styling



360° SWIVEL CORD



Curling Iron

SHS 8603BK

If you haven't been given curly hair, the SHS 8603BK can give you what nature has deprived you of. Its extra smooth DeepBlack ceramic coating will deliver stylish curling.

It's ready to go in just 60 seconds, so you won't wait long for a fabulous wavy hairdo. It has clever functionality as well, with an integrated folding stand and a 360° swivel power cord to eliminate twisting and tangling.

FEATURES

- **Extra smooth DeepBlack ceramic coating**
- **LED power on indicator**
- **Diameter of the tongs 19 mm**
- Integrated folding stand
- Rapid heat-up in 60 s
- 360° swivel power cord to eliminate twisting and tangling
- Power input 38 W



Curling Iron

SHS 0920BK

Perfectly styled hair is truly within your reach with this wide curling iron.

The extra-large diameter of the tongs (33 mm) and the extra-smooth keratin ceramic surface ensure precise styling, which is also gentle on your hair. Five different temperature settings adapt perfectly to what you need. Your comfort is ensured by the integrated folding stand and the swivel end, which keeps the power cord from twisting and tangling.

FEATURES

- **Extra smooth keratin ceramic surface is both effective and gentle on the hair**
- **Individual styling thanks to 5 temperature settings**
- **Oversized 33 mm tong diameter for easier hair styling**
- Quickly ready to use, heating time of only 60 s
- Integrated folding stand for easy storage
- 360° swivel power cord end prevents twisting and tangling





Hair Curling Iron

SHS 0850BK

The unique conical shape of this curling iron will give your hair perfectly natural waves.

During styling, you can choose from five different temperature settings depending on what you need. You'll also appreciate the quick heat-up time; the curling iron is ready to work in just 60 seconds. The integrated folding stand and the 360° swivel tip make it easy to use because the power cord doesn't get tangled up.

FEATURES

- **Extra smooth keratin ceramic surface for efficient and gentle styling**
- **Variability thanks to 5 temperature settings**
- **LED on indicator**
- Conical shape, tong diameter 13–25 mm
- Integrated folding stand
- Quick heat-up time in 60 s
- 360° swivel power cord end to prevent twisting and tangling



EASY TO USE
with LED indicators



HAIR NUTRITION
KeratinCare+



360° SWIVEL
power cord

Hot Air Curling Iron

SHS 7551VT

● SHS 7551VT ● SHS 7551RD

This hot air curling iron delivers the exact wavy hairstyle you want. Two temperature settings and seven exchangeable attachments (curling tongs, round brush, half brush, round brush with retractable pins, a large round brush, a straightening brush, and flow concentrator) offer plenty of styling options.

Adapters are easily interchangeable and the power cord rotates 360° to prevent twisting and tangling. The ionisation function protects the hair and delivers an anti-static effect.

**FEATURES**

- **7 interchangeable attachments, 2 temperature levels and a cold-air button for unlimited styling**
- **Ionisation function with anti-static effect that protects the hair**
- **360° swivel power cord prevents twisting and tangling**
- Easy and quick-to-change adapters with a fuse and hanging loop
- Safety fuse against overheating
- Power 1000 W

ACCESSORIES

- Curling tongs (diameter 18 mm, operational length 115 mm)
- Round brush (diameter 20 mm, operational length 95 mm)
- Half brush (width 39 mm, operational length 90 mm)
- Round brush with retractable pins
- A large round brush
- Straightening brush
- Flow concentrator





Hot Air Curling Iron

SHS 8401BK

Two temperature settings, a cold-air button, and five different attachments. A combination that guarantees perfectly styled hair.

The attachments are easy to change, yet safe; it comes equipped with an integrated safety lock. Your hair will be perfectly smooth thanks to the ionisation function, which prevents static electricity. Your comfort is ensured by a hanging loop and a swivel end that prevents the power cord from twisting and tangling.

FEATURES

- **Two temperature settings and a cold-air button**
- **Keratin technology and ionisation with anti-static effect**
- **5 interchangeable attachments with integrated safety lock**
- Curling tongs (diameter 18 mm, working length 115 mm)
- Round brush (diameter 20 mm, working length 95 mm)
- Half brush (width 39 mm, working length 90 mm)
- Round brush with retractable spines (diameter 28 mm, working length 100 mm)
- Large round brush (diameter 31 mm, working length 110 mm)
- Hanging loop for easy storage
- 360° swivel power cord end to prevent twisting and tangling

Hot Air Curling Iron

SHS 3000BK

This hot air curling iron packs many excellent features in a small package! The two temperatures and speed levels let you create great hairstyles, while the thermally-insulated end ensures safe handling.

Its round brush (19 mm diameter, rotation option with a lock) can be easily removed for a more comfortable cleaning, and the 360° swivel power cord reduces twisting and tangling, which makes SHS 3000BK a real treat.

FEATURES

- **Thermally-Insulated End for Safe Handling and Turning of Hair Strands**
- **Brush Removal Option for Easy Cleaning**
- **Hanging Loop**
- 360° Swivel Power Cord End Limits Twisting and Tangling
- Safety Fuse to Prevent Overheating
- Rated Power of 400 W



Cosmetic Mirror

SMM 3090

A special cosmetic mirror designed for the personal hygiene of men, women and teenagers. Examine your hairstyle or skin in perfect detail.

FEATURES

- **18 cm in diameter and two-sided design**
- **One side features a standard reflection, while the other has 5× magnification enabling flawless care for every detail**
- **LED diode backlight**
- Economical operation (consumption max. 5 W)
- All stainless-steel design



STYLING YOUR HAIR

WITH CARE

HAIR DRYERS

Healthy, shiny, perfectly-styled hair, it's what we all dream of and exactly what SENCOR hairdryers deliver. Their gentle care starts with a range of three temperatures at two speed levels, providing extra fast or extra even drying. To make your hair look absolutely stunning, ionisation seals the cuticles of each strand to retain moisture, protecting your hair from overdrying and breaking. If you wish to add extra volume, replace the air nozzle with a diffuser, which will easily create more voluminous hair. Once you are satisfied with the hairstyle, press the cold-air button to set it. Voilà!

The practical aspects will please you too. Our modern hairdryers feature a hanging loop for easy storage, allow you to move freely thanks to their long power cords, use a rubber coating to protecting their shine and even have a special anti-bacterial surface treatment. Maintenance is super-easy as they feature a washable rear grill. And when on holiday or a business trip, your hair will look great thanks to the travel hair dryers with folding handles that fit into any size of luggage.

WHY CHOOSE A SENCOR HAIR DRYER

- Ultra-light design for effortless use
- Different temperature and speed settings to create optimal styling
- Diffuser for extra hair volume
- Perfect grip with antibacterial surface treatment
- Ionisation function for healthy and shiny hair

ENJOY THE STYLING OPTIONS

A stylish hairstyle should highlight your beauty, and SENCOR is here to help you achieve this. Use different attachments, temperature levels and speeds to create just the look as you want.

HOME HAIR SALON



Hair Dryer

SHD 8200GD

The true ionic function generates millions of negative ions to give you silkier and shinier hair without crinkling. It also enables fast drying and reduces static electricity, leaving your hair beautiful and healthy.

Featuring three temperature levels, the SHD 8200GD is ready to offer its low temperature flow for extra gentle drying and well-hydrated hair. For quicker results, just use the faster of two speeds available, and cut the drying time by 33%.

FEATURES

- **True ionic function with millions of negative ions for silkier and healthier hair, reduced static electricity and hair damage prevention**
- **Argan oil and keratin protection**
- **Compact size with professional AC motor and ergonomically shaped handle**
- 3 temperature levels and 2 speeds
- Cool shot function for perfect fixation
- Removable rear grill for easier cleaning
- Wave-shaped heating spiral for constant temperature preventing hair damage



ACCESSORIES

- 2 slim concentrators (hair drying and shaping)
- Volume diffuser

Hair Dryer

SHD 8275BK

Do you want a hair dryer that gently cares for your hair and is durable enough to last a long time?

Then choose the SHD 8275BK. Its AC motor ensures trouble-free operation, while KeratinCare+ technology and the ionisation function support your hair's health. With practical accessories, it's sure to become your everyday indispensable helper.

FEATURES

- **Long-lasting AC motor**
- **KeratinCare+ technology to care for hair health**
- **Ionisation function eliminates static electricity**

ACCESSORIES

- 2 slim concentrators (hair drying and shaping)
- Volume diffuser



Hair Dryer

SHD 8100GD

With the SHD 8100GD true ionic function, argan oil and keratin join their powers to protect your hair and give it a silkier look and feel.

This compact hair dryer features a professional AC motor with three temperature levels and two speeds, so your hair can dry extra gently or extra fast (cutting the drying time by 30%). The final cool shot fixes your hairstyle in place for long lasting look.

FEATURES

- **True ionic function with millions of negative ions for silkier and healthier hair, reduced static electricity and hair-damage prevention**
- **Argan oil and keratin protection**
- **Compact size with professional AC motor and ergonomically shaped handle**
- 3 temperature levels and 2 speeds
- Cool shot function for perfect fixation
- Removable rear grill for easier cleaning
- Wave-shaped heating spiral for constant temperature preventing hair damage



ACCESSORIES

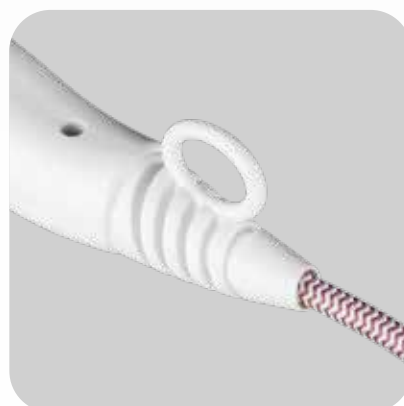
- Slim concentrator
- Volume diffuser



COOL SHOT
compact size



ARGAN OIL & KERATIN
Protection



HANGING LOOP
Profi Length of Cable

Hair Dryer

SHD 6700VT

● SHD 6700VT ● SHD 6701RD

Air nozzle and diffuser: two key attachments necessary for any impressive hairstyle. With an input of 2000 W running three temperature and two speed settings, the desired look is achieved with surprising ease.

This ultralight-design hairdryer with a 2.6 meter long power cord provides a high degree of comfort, while the rubber-coated rear part of the handle makes it easy to hold. A thermal fuse protects the motor from overheating, while scratches on the finish are prevented by rubber side guards.

FEATURES

- **Power input of 2000 W**
- **Ultra-light design and 2.6 m power cord for uncompromising comfort**
- **Exclusive styling results with 3 temperature and 2 speed settings**
- Air nozzle, diffuser and cold-air button for any hairstyle desired
- Removable rear vent cover for easier cleaning
- Thermal fuse protects the motor from overheating
- Hanging loop and rubber-coated rear part of the handle for safe storage and gripping

ACCESSORIES

- Slim concentrator
- Volume diffuser



THREE TEMPERATURE
and two speed settings



REMOVABLE
rear vent cover

Hair Dryer

SHD 6600WH

● SHD 6600RD ● SHD 6600VT ○ SHD 6600WH

The fantastic 2000 W of input power and 3 temperature settings at 2 speeds are all you need when it comes to impressive styling. The air nozzle delivers precise, long-lasting hairstyling thanks to the cold-air treatment feature. There are no limitations when using this hairdryer: the ultra-light design keeps your arm from getting tired, and the 2.6 m long power cord allows you to move as needed.

Practical aspects have been resolved too: the hairdryer offers a rubber-coated rear part of the handle for a sure grip, removable rear vent cover for easier cleaning, a hanging loop for easy storage and rubber side guards that eliminate surface scratches. To ensure uncompromising durability, a thermal fuse protects the motor from overheating.

FEATURES

- **Power input of 2000 W**
- **Ultra-light design and rubber-coated rear part of the handle for comfortable use**
- **3 temperature settings and 2 speeds to deliver unparalleled results**
- Air nozzle and cold-air button for precise and long-lasting styling
- Removable rear vent cover for easier cleaning
- Rubber side guards prevent the hairdryer from becoming scratched when put down
- Thermal fuse protects the motor from overheating
- Length of the power cord: 2.6 m



Hair Dryer

SHD 6800RG

Protect and refine your hair while creating impressive hairstyles with the SHD 6800RG.

Take care of your hair with Argan oil and keratin along with ionic function, so that your hair is and gently and perfectly dried. Ions also make hair shinier, easy to comb, and less prone to damage. The ergonomically shaped handle is suitable for both left- and right-handers, making it easy to use for everyone.

FEATURES

- **Professional AC motor with a power input of 2300 W**
- **Argan oil and keratin for silkier hair**
- **3 temperature levels and 2 speeds to suit any type of hair**
- Cool Shot function for long-lasting hairstyle fixation
- Ionic function for healthier and shinier hair, faster drying and reduced static electricity
- Ergonomically shaped handle for left- and right-handers
- Removable rear grill for easier cleaning
- Wave-shaped heating spiral for constant temperature
- Hanging loop
- Thermal fuse to protect against overheating

**ACCESSORIES**

- Slim concentrator
- Volume diffuser

Hair Dryer

SHD 108VT

Indulge in the premium care of ionisation: this function generates negative ions that seal the hair cuticles to retain moisture, protecting your hair from overdrying and breaking.

Your hair styling options are endless thanks to 2 speeds (gentle and strong air flow) at 3 temperature levels (low, medium and high). The cold-air button delivers faster hairstyle fixation and shaping. An outstanding wave-shaped heating spiral and honeycomb-shaped air outlet openings for optimal air flow make this hairdryer really special.

FEATURES

- **Power input of 2200 W**
- **Ionisation function protects hair from overdrying and breaking**
- **2 speeds (gentle and strong air flow) and 3 temperature levels (low, medium and high)**
- Cold-air button for to set your hairstyle and shaping
- Honeycomb-shaped air outlet openings for optimal air-flow



Hair Dryer

SHD 0045BK

This travel-ready hair dryer is reliable and compact, making it perfect to bring along for trips. Its folding handle makes it easy to take along on holidays and business trips.

It features a long-life DC motor (with an input power of 1600 W), which powers three temperature levels (low, medium, and high) and two speeds (gentle and strong air current). With a removable rear grid, hanging loop and a 1.8 meter power cord, your styling will be a truly pleasant experience.

FEATURES

- **Long life DC motor with 1600 W of power input**
- **3 temperature levels (low, medium, and high) and 2 airflow speeds (gentle and strong)**
- **Amazing hair when travelling thanks to the folding handle**
- Cool Shot function for fixing your hairstyle
- Removable rear grill for easier cleaning
- Hanging loop
- Thermal fuse to protect against overheating

Travel Hair Dryer

SHD 7200GD

Featuring three different temperature levels and two speeds, the SHD 7200GD is a great choice for anyone who wants healthy and beautiful hair.

With the help of the ionic function, your hair gets silkier and shinier, while reduced static electricity results in easy combing. Two exchangeable accessories, a slim concentrator, and a volume diffuser, offer you any kind of a hairstyle.

FEATURES

- **Long-life DC motor with 2000 W of power input**
- **Three temperature levels and two speeds**
- **Ionic function for healthy and beautiful hair**
- Wave-shaped heating spiral for constant temperature
- Amazing hair when travelling thanks to the folding handle
- Cool shot function fixes your hair in place
- Slim concentrator and volume diffuser



ACCESSORIES

- Air nozzle



ACCESSORIES

- Slim Concentrator
- Volume Diffuser

Travel Hair Dryer

SHD 7100BK

The Ionic function on the SHD 7100BK prevents your hair from crinkling, leaving it silkier and shinier than ever before. Ions also reduce static electricity for easy combing and support faster drying without hair damage..

The hair dryer is reliable thanks to its long-life DC motor, which powers 3 temperature levels and 2 speeds. And it goes without saying that the dryer is convenient and safe to use.

FEATURES

- **Long-life DC motor with 2000 W of power input**
- **Three temperature levels and two speeds**
- **Ionic function for healthy and beautiful hair**
- Wave-shaped heating spiral for constant temperature
- Cool shot function fixes your hair in place
- Ergonomically shaped handle
- Hanging loop

ACCESSORIES

- Slim Concentrator



Travel Hair Dryer

SHD 6400B

● SHD 6440V ● SHD 6400B

Gentle air flow at a low temperature, or strong air flow at high temperature?

Choose whichever your hairstyle requires and set the result with the cool shot button. Rubber side guards protect the hairdryer from scratches, and the 850 W DC motor ensures outstanding durability.

FEATURES

- **Foldable handle and DC motor**
- **2 power settings (gentle air flow / low temperature and strong air flow / high temperature)**
- **Air concentrator and cool shot button for outstanding results**
- Rubber side guards protect against scratches
- Hanging loop for easy storage
- 850 W DC motor







HAIR CLIPPERS & SHAVERS

Barber-quality grooming at home? Sure, when you say yes to the newest SENCOR hair clippers and electric shavers! Their precise styling and gentle care will deliver outstanding results whenever you need them. Just imagine a new look, use our products and impress everyone around you.



A full-page photograph of a barbershop interior. A barber in a blue shirt and patterned tie is smiling while spraying water from a clear bottle onto the hair of a customer. The customer is seated in a black barber chair, wearing a black cape and light-colored jeans. Another person is visible in the background, and the shop has shelves of products and modern lighting.

TURNING YOUR BATHROOM INTO A **BARBER** **SHOP**

HAIR CLIPPERS

No matter whether you are up for a complete change of your look or just need a quick beard trim, SENCOR clippers will do it so fast and easily. Choose among numerous interchangeable length attachments or go for comb-free trimming to style your hair just as you wish. The precise work of professional titan blades and the firm grip of an ergonomic handle provide a sure hand when styling.

Moreover, multi-grooming sets offer attachments for nose and body hair trimming, beard trimming, contour shaping and precise alignment.

The inside of the clippers conceals an exceptionally quiet professional high-speed motor. These appliances are also fast to charge, and some are able to achieve a full battery charge in just two hours, giving you 120 minutes of grooming time without a tangled power cord.

ALWAYS IN FASHION

Men's hairstyle fashion may change, but a set of SENCOR clippers will always deliver top-notch results. No wonder, its numerous attachments give you absolute freedom in hair and body grooming.

WHY CHOOSE SENCOR HAIR CLIPPER

- Numerous attachments for unlimited hair styling and body care options
- Graphic trim-length indicator allows complete control
- Rapid charging technology and long battery operating time
- Professional quality blades and quiet high-speed motor
- Sure grip thanks to the ergonomic handle, and free movement with cord-free use

VARIABLE USE



Hair Clipper

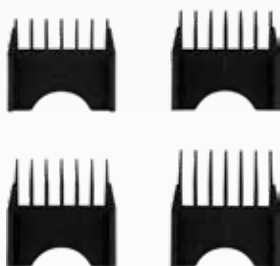
SHP 8900BK

The SHP 8900BK hair clippers were made to style cool hairdos and beards even at home.

The quiet, high-speed motor always guarantees a job well done, and the Direct Drive technology allows the clippers to be used while charging, so that you can trim and charge anytime you want. Choose from 25 different lengths with clipping with or without an attachment.

FEATURES

- **Quiet, high-speed motor for perfect results**
- **Direct Drive technology for freedom of use and charging**
- **Titanium coated blades**
- Clipping without an attachment 0.8 / 1.2 / 1.6 / 2.0 / 2.5 mm
- 4 replaceable comb attachments 3 / 6 / 9 / 12 mm
- 25 different lengths to choose from
- Ergonomic handle for a sure grip
- Up to 3 hours of battery powered operation
- Two speeds: classic a turbo mode
- LED display with battery status



ACCESSORIES

Cleaning brush, Oil for the cutting unit, 4 comb attachments (3 / 6 / 9 / 12 mm), Charger



Hair Clipper

SHP 8400BK

Modern hair clippers that handle beards and nose hair with ease thanks to its 8 attachments (3–25 mm) and 46 mm blade. Its hard plastic travel case also makes it ideal away from home.

Fast charging takes only 2 hours, providing up to 1 hour of battery operation. With the use of Direct Drive technology, the clippers can be powered from a socket, either directly or while charging, even without a fully charged battery.

FEATURES

- **Rapid charge technology achieves a full battery within just 2 hours**
- **8 exchangeable trim-length attachments (3 / 6 / 9.5 / 13 / 16 / 19 / 22 / 25 mm) and option to trim without the comb attachment**
- **Professional titanium blades (width 46 mm)**
- Exceptionally quiet, professional high-speed motor
- Battery-powered operation time of 2 hour
- Ergonomic chrome-plated handle prevents slipping
- Graphic trim-length indicator
- LED charging indicator of a built-in 2200 mAh Li-Ion battery
- All-plastic travel case for easy handling and storage

ACCESSORIES

Cleaning brush, Oil, Comb, Hair trimming length attachments 3 mm / 6 mm, 9.5 mm / 13 mm / 16 mm / 19 mm / 22 mm / 25 mm, Charger, Travel case



Hair Clipper

SHP 8305BK

A professional multi-grooming set with 12 interchangeable attachments for hair, beard and nose hair.

With its attachments of various lengths, it can cut hair to between 3 and 12 mm in length, beards to between 4 and 8 mm in length, shape contours and align. The quick-charge technology provides a full charge in as little as 2 hours, and the built-in 600 mAh Li-Ion battery provides 60 minutes of operation.

FEATURES

- **12 interchangeable attachments**
- **Exceptionally quiet, professional high-speed motor**
- **Rapid charge technology achieves a full charge within just 2 hours**
- Professional titanium blades (width 9 / 30 / 39 mm)
- Operating time of up to 60 minutes
- Direct Drive Technology
- Ergonomic chrome-plated handle prevents slipping in the hand
- Option to trim without the comb attachment
- Graphic trim-length indicator
- LED charging indicator



ACCESSORIES

Practical charging stand, nose hair removal attachment, beard trimmer attachment, contour styling attachment, standard hair clipper attachment, large hair clipper attachment, hair clipper attachment 3 mm / 6 mm / 9 mm / 12 mm, beard clipper attachment 4 mm, 6 mm, 8 mm, oil, cleaning brush, all-plastic travel case for easy handling and storage

Hair Clipper

SHP 7411BK

This multi-grooming set with 12 interchangeable attachments lets you take care of the whole body, given that it can handle nose and body hair, beard trimming, contour shaping and precise alignment, and hair cutting from 3 to 12 mm in length.

The device can be powered by cable or battery; charging is provided by a micro USB connector, making it usable all over the world. The operating time when powered by the 600 mAh Li-Ion battery is 2 hours, and the battery fully charges in 2 hours.

FEATURES

- **12 interchangeable attachments**
- **Micro USB charging**
- **Exceptionally quiet professional high-speed motor**
- Rapid charge technology achieves a full charge within just 2 hours
- Power source cable/battery
- Ergonomic handle prevents slipping
- Battery operating time of 2 hours
- Titanium blades (blade width 6 / 26 / 34mm)
- Option to trim without the comb attachment
- Graphic cutting length indicator
- LED charging indicator



ACCESSORIES

Practical stand, comb, nose hair trimmer, body hair shaver, facial hair shaver, design hair trimmer, standard hair trimmer, large hair trimmer, hair trimmer 3mm / 6mm / 9mm / 12mm, facial hair length regulator, body hair length regulator, oil

Hair Clipper

SHP 7201SL

Use this hair clipper set with 7 attachments for the cutting and precise trimming of nose hair, beards and hair to achieve an uncompromising look.

The device can be used for up to 45 minutes and is powered by a battery that charges in 8 hours. To ensure long-life durability, the clippers meet the requirements of the IPX 5 protection rating, proving their dust and water resistance. The Ni-MH battery capacity is 2× 600 mAh.

FEATURES

- **7 interchangeable attachments**
- **Titanium blades**
- **Fully charged in 8 hours**
- High-speed motor
- Power source cable/battery
- Ergonomic handle prevents slipping
- Battery operating time 45 minutes
- Blade width 41 / 32 / 20 mm
- Option to trim without the comb attachment
- Graphic cutting length indicator
- LED charging indicator

ACCESSORIES

Practical stand, nose hair trimmer, facial hair shaver, standard hair trimmer, design hair trimmer, large hair trimmer, facial hair length regulator, body hair length regulator



Hair Clipper

SHP 6201RD

Enjoy grooming with these multipurpose clippers, powered by a high-speed motor, using six interchangeable attachments and titanium blades to deliver outstanding results when hairstyling and trimming facial, body or nose hair.

An ergonomic handle prevents slipping and provides a firm grip for the best results. The appliance is fully charged in 8 hours with 45 minutes of operating time.

FEATURES

- **Titanium blades and six interchangeable attachments**
- **High-speed motor**
- **Option to trim without the comb attachment**
- Graphic cutting length indicator
- Integrated Ni-Mh battery fully charged in 8 hours, delivering 45 minutes of operating time
- LED charging indicator
- Ergonomic handle prevents slipping
- Blade width 41 / 32mm

ACCESSORIES

Nose trimmer, facial shaver, standard hair trimmer, full-size trimmer, facial hair length regulator, body hair length regulator



Hair Clipper

SHP 5207CH

Perfectly groomed hair from the comfort of your own home? No problem! Thanks to the high-speed motor of the SHP 5207CH hair clipper, you can create a professional hairstyle with barber-shop quality.

Moreover, using it is comfortable and pleasant; the device works quietly and the ergonomic handle allows for a firm grip. The powerful battery gives you up to 90 minutes of use without charging.



FEATURES

- **Ultra-quiet, high-speed motor guarantees professional hair care**
- **High-quality blades with a titanium coating**
- **2 comb attachments (10 and 20 mm) and 38 cutting height settings (1.0-20.0 mm) allow for variable styling**
- Ergonomic handle prevents slipping
- Fully washable under running water
- Usage time of up to 90 minutes
- USB-C charging cable

TITANIUM COATING
BLADES

ERGONOMIC HANDLE

Hair Clipper

SHP 4502BL

● SHP 4501BK ● SHP 4502BL

No matter whether powered by cable or battery, these clippers deliver precise grooming thanks to an ergonomic handle that prevents slipping.

Trimming is possible with or without the comb attachments with the unique Lock-Up system and cutting length graphically indicated.

FEATURES

- **Power source cable/battery**
- **Removable length attachment for easy cleaning**
- **Ergonomic handle prevents slipping**
- Battery operating time of 40 minutes, LED charging indicator
- Blade width of 39 mm
- Option to trim without the comb attachment
- 2 comb attachments with a unique Lock-Up system (short attachment with lengths of 3, 9, 15 and 24mm and a long attachment with lengths of 14, 20, 26 and 35mm)
- Graphic cutting length indicator

ACCESSORIES

Practical stand, charger / power adapter, 2 comb attachments, cleaning brush



Hair Clipper

SHP 4302RD

The ultra-quiet, high-speed motor and removable length attachment for easy cleaning make these clippers very convenient to use.

The regulator sets the cutting length from 1 to 8 mm.

Grooming can be done with or without the comb attachment with the cutting length graphically indicated. The appliance is powered both by a cable and battery (50 minutes of operating time).

FEATURES

- **Battery or ac-powered to adapt to any place or situation**
- **Ergonomic handle prevents slipping**
- **Battery operating time of 50 minutes**
- Option to trim without the comb attachment
- Regulator for setting the cutting length from 1 to 8 mm, graphically indicated
- Integrated Nimh battery with LED charging indicator

ACCESSORIES

Charging/power adapter, cleaning brush



WATER RESISTANT



CUTTING LENGTH
regulator

Hair Clipper

SHP 3500BL

Run by a quiet, high-speed motor, the SHP 3500BL delivers uncompromised results. No matter if you style your hair with or without an attachment, its stainless-steel blades ensure a job well done.

The length can be easily set by a rotary control and combined with the comb attachment, as there are an impressive 20 lengths to choose from. The ergonomic handle ensures a firm grip.

FEATURES

- **Quiet, high-speed motor for perfect results**
- **Direct Drive Technology for freedom of use and charging**
- **Stainless steel blades**
- Smooth length setting with a rotary control
- Clipping without an attachment 0,5 / 1 / 2 / 3 / 4 / 5 / 6 / 7 / 8 / 9 / 10 mm
- 110 mm comb attachment
- 10 different lengths to choose from
- Ergonomic handle for a sure grip
- Up to 1 hour of battery-powered operation
- Fully charged in 2 hours

ACCESSORIES

Cleaning brush, Oil for the cutting unit, 1 comb attachments (10 mm), USB charging cable





Hair Clipper

SHP 3301BL

With an operating time of 50 minutes and 25 mm wide blades, this clipper provides an excellent opportunity to achieve an impressive look.

The ultra-quiet, high-speed motor, ergonomic handle that prevents slipping, removable length attachment for easy cleaning, and LED charging indicator make this a highly practical tool to use.

FEATURES

- **Battery or ac-powered to adapt to any place or situation**
- **Ultra-quiet, high-speed motor for a pleasant experience**
- **Ergonomic handle prevents slipping**
- Battery operating time of 50 minutes
- 25 mm blade width, option to trim without the comb attachment
- Graphic cutting length indicator for easy orientation
- Regulator for setting the cutting length from 1 to 8 mm, graphically indicated
- Integrated Nimh battery with LED charging indicator

ACCESSORIES

Charging/power adapter, cleaning brush



25 MM BLADE



EASY-TO-CLEAN attachment



Hair Clipper

SHP 320SL

The uncompromising quality of stainless steel blades prevents any signs of rust.

Four comb attachments in different sizes (3, 6, 9 and 12 mm) and comb-free trimming are ideal for variable grooming. The trimming length can be adjusted even when styling without the attachment, and the ergonomically-shaped handle provides a sure grip for precise clipping.

FEATURES

- **Stainless steel protects the blades from rust**
- **Styling with four comb attachments (3, 6, 9 and 12 mm) or even without**
- **Trimming length adjustment lever when cutting without the attachment**
- Ergonomically-shaped handle and hanging loop for comfortable use

ACCESSORIES

4 comb attachments, cutting unit cover, comb, scissors, cleaning brush, oil





Hair Clipper

SHP 460CH

With four different attachments, the SHP 460CH will conjure up any hairstyle. This clipper is powered by a professional motor that gives it the power it needs but is also very quiet.

A special attachment protects the high-quality stainless steel blade. The ergonomically-shaped handle and the practical hanging loop make it comfortable to use.



FEATURES

- Very quiet, professional, high-speed motor guarantees comfortable hair clipping
- Blade made of high-quality stainless steel
- Includes 4 attachments; sizes 3 mm, 6 mm, 9 mm, and 12 mm and 1 protective attachment
- Ergonomic handle prevents slipping
- Easy storage thanks to the hanging loop

ACCESSORIES

Barber comb, scissors, cleaning brush, oil for the blade, protective attachment, 4 comb attachments



AMPLE SET OF ACCESSORIES
for variable styling



EASY-TO-EXCHANGE
comb attachments



BLADES MADE
of quality steel

Hair Clipper

SHP 211SL

Choose any of the 4 comb attachments (3, 6, 9 and 12 mm) or groom without the comb attachment to achieve the desired look.

The stainless steel blade never rusts, and the ergonomically-shaped handle turns hygiene into an enjoyable experience. The hanging loop keeps the clippers right where you need them.

FEATURES

- **4 comb attachments (3, 6, 9 and 12 mm) or comb-free grooming to achieve the desired look**
- **Trimming length adjustment lever when cutting without the attachment**
- **Ergonomically-shaped handle for a sure grip**
- Hanging loop to keep the clipper ready to use



ACCESSORIES

4 comb attachments, cutting unit cover, comb, scissors, cleaning brush, oil



Nose Ear Hair Trimmer

SNC 101BL

Trim your nose, ear and side-burn hair with the uncompromising precision and comfort of two interchangeable heads.

Stainless-steel blades deliver outstanding, rust-free quality, while the washable cutting heads allow effortless cleaning.

FEATURES

- **Nose, ear and sideburn hair trimming with 2 interchangeable heads**
- **Stainless-steel blades for premium durability**
- **Washable cutting heads to achieve maximum hygiene**
- Integrated lighting and rubber surface for comfortable use

ACCESSORIES

Practical stand, cleaning brush, 1x AA alkaline battery



AN UNPARALLELED
**SMOOTH
SHAVE**
WITH NO SIGNS
OF IRRITATION

MEN'S ELECTRIC SHAVERS

A smooth shave without a sign of skin irritation: that's exactly how SENCOR electric shavers work. Enjoy the comfort of 4D technology with tilting shaving heads that perfectly adjust to all facial contours, ensuring a flawless shave so gentle on your skin. To give you the freedom to move, the shaver features cordless operation powered by an integrated rechargeable battery. These modern batteries are fast-charging and can last up to one month of daily use before recharging is needed.

To provide the appliance enough power for a perfect shave with minimum friction, an ultra-quiet, high-speed motor is included.

Your comfort is guaranteed by an ergonomically-shaped handle that fits the hand perfectly, and a water-resistant unit which can be easily washed under running water.

WHY CHOOSE A SENCOR ELECTRIC SHAVER

- 4D technology for perfect results without signs of skin irritation
- Fast charging with up to one month of daily use
- Ultra-quiet, high-speed motor for a pleasant experience with minimal friction
- Built-in Li-Ion battery with LED charging indicator

4D SHAVE TECHNOLOGY

SENCOR knows how important it is to leave your skin irritation-free after shaving. Having developed its 4D technology with tilting shaving heads, SENCOR shavers fully adjust to facial contours, ensuring a flawless and gentle shave.

NO IRRITATION



Electric Shaver

SMS 7000BK

The unique self-cleaning head and stainless-steel blades are just a few of the many features offered by the SMS 7000BK. The Direct Drive technology lets you style and charge anytime you wish, while the quiet, high-speed motor makes shaving a pleasant experience.

This electric shaver is designed for dry shaving but can be easily rinsed. After fast charging (fully charged in 3.5 hours), it's ready to deliver up to 3 hours of battery-powered operation.

FEATURES

- **Quiet, high-speed motor for perfect results**
- **Direct Drive Technology for freedom of use and charging**
- **Unique self-cleaning head**
 - Suitable for dry shaving
 - Stainless steel blades
 - Titanium coated trimmer
 - Ergonomic handle for a sure grip
 - Safe to rinse in water
 - LED display with battery status
 - Up to 3 hours of battery-powered operation
 - Fast-charging technology, fully charged in 3.5 hours
 - Safety lock feature preventing random switching on

ACCESSORIES

- Cleaning brush
- Trimmer
- USB-C charging cable
- USB charging adapter



UNIQUE SELF-CLEANING
head



TITANIUM COATED
trimmer



Electric Shaver

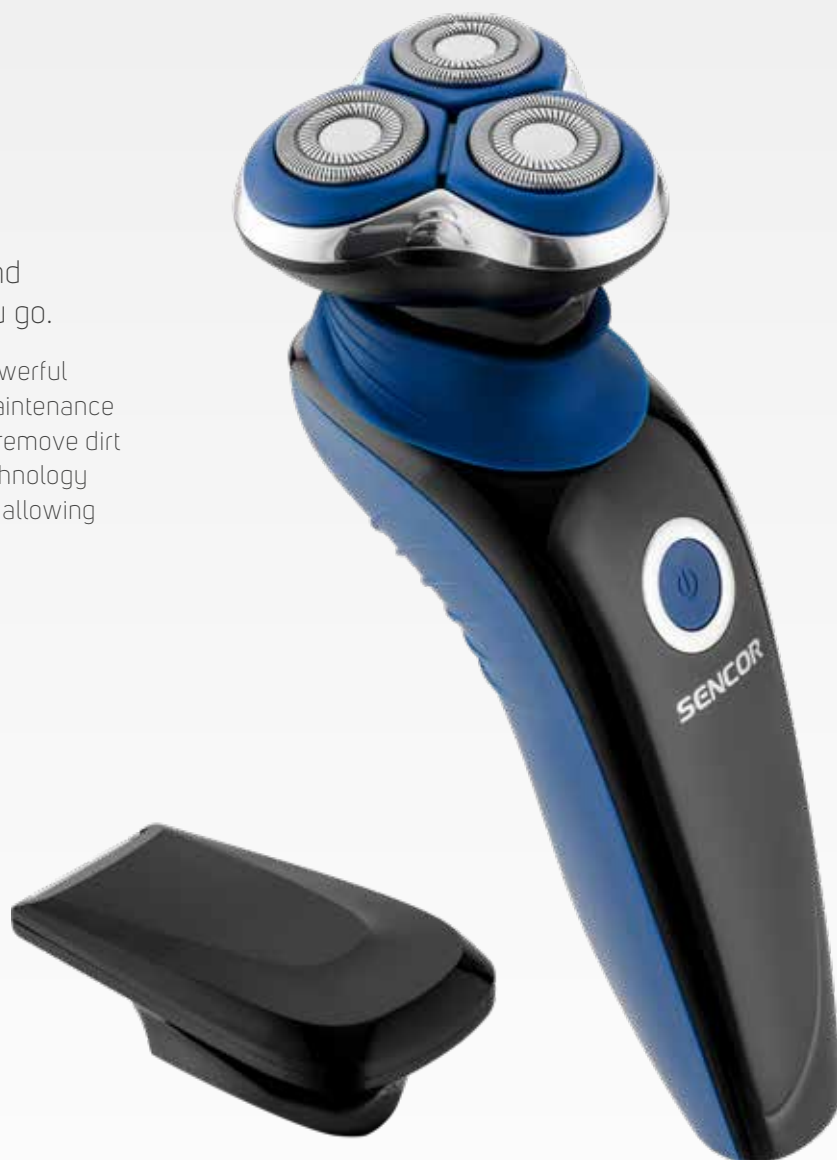
SMS 5520BL

This dry shaver will keep your beard and sideburns looking perfect wherever you go.

Its high-quality stainless steel blades and powerful professional motor ensure perfect results. Maintenance is easy, just rinse the shaver with water and remove dirt with the included brush. The Direct Drive technology makes using the shaver as easy as possible, allowing simultaneous charging and shaving.

FEATURES

- **Direct Drive technology allows simultaneous shaving and charging**
- **Professional motor is powerful and extremely quiet**
- **LED indicator shows the battery charge level**
- Fast charging (100% capacity in 1.5 hours)
- Up to 60 minutes of operation per a single charge
- Ergonomic handle and stainless steel blades for comfortable use



STAINLESS STEEL
blades



ERGONOMIC
handle



SIDEBURNS STYLING
attachment



CHARGE LEVEL
LED indicator



Electric Shaver

SMS 5510BK

The ergonomic handle and professional motor ensure that shaving beards, trimming sideburns, and removing smaller hairs can be done comfortably.

The battery charges quickly; just an hour and a half and the machine is ready for 60 minutes of intensive use. But there's no need to wait for a full battery, as Direct Drive technology allows you to shave and charge at the same time. An intuitive LED indicator shows the battery status.

FEATURES

- **Direct Drive technology allows simultaneous shaving and charging**
- **Professional motor is powerful and extremely quiet**
- **LED indicator shows the battery charge level**
- Fast charging (100% capacity in 1.5 hours)
- Up to 60 minutes of operation per a single charge
- Ergonomic handle and stainless steel blades for comfortable use



SIDEBURNS STYLING
attachment



CHARGE LEVEL
LED indicator



4D TECHNOLOGY
guarantees tilting of the
shaving heads in four
independent directions



ERGONOMIC
handle



Electric Shaver

SMS 5011SL

● SMS 5011SL ● SMS 5012GR ● SMS 5013RD

A perfect shave without nicks and cuts is provided by three separate pivoting razor heads that move in four independent directions thanks to 4D technology, thus following all contours of the face. The razors in the highest line are water-resistant.

The shaver is equipped with a high-quality battery that lasts for up to 1 month (1-2 minutes of daily operation) when fully charged.

A trimming attachment for precise trimming of whiskers and mustaches, together with a cleaning brush and travel case included.

FEATURES

- **4D technology for a perfect fit to your face**
- **Shaving blades with an extended service life**
- **Ultra-quiet, high-speed motor**
- Built-in Li-Ion battery (500 mAh)
- LED charging indicator
- Charging time of 2 hours
- Cordless operation
- Available in 3 colours



SPECIAL BLADES
with prolonged
durability



INDEPENDENTLY
tilting shaving heads



4D TECHNOLOGY
guarantees tilting
of the shaving
heads in four
independent
directions



THE ENTIRE UNIT
is water-resistant



Electric Shaver

SMS 4210BK

With this dry shaver, there's no need to wait until the battery is 100% full.

Thanks to its Direct Drive technology, it can take care of your look even when charging. The ultra-quiet, high-speed motor and stainless steel blades ensure a professional and comfortable shave. Just rinse the shaver under running water after the job is done.

With the Li-Ion battery, the shaver charges very quickly and works for up to 50 minutes after a single charge. The battery is back to full power in just two hours.



SIDEBURNS STYLING
attachment



EASY STORAGE
with the practical stand



EASY TO RINSE
under running water



DRY SHAVE
with stainless steel blades

FEATURES

- **Direct Drive technology allows simultaneous shaving and charging**
- **Professional motor is powerful and extremely quiet**
- **Ideal for comfortable shaving of the beard and hair**
- Blades are made of high-quality stainless steel
- Appliance can be rinsed under running water
- Works for 45 minutes after a single charge



Electric Shaver

SMS 4013RD

● SMS 4011BL ● SMS 4013RD

A handy electric razor available in 2 colours, with 3 independent pivoting heads that follow the contours of your face. The shaving blades are durable and have an extended service life.

Cordless operation provides easy handling, while the LED indicator alerts you to a low battery.

FEATURES

- **Three replaceable pivoting razor heads**
- **Cordless operation powered by a built-in rechargeable battery**
- **Lock against accidental switch-on**
- Built-in NiMH battery (600 mAh)
- Operating time: 75 minutes



GROOMING TRIMMER



Electric Shaver

SMS 2001BK

● SMS 2001BK ● SMS 2002RD

A classic electric razor for quick and easy shaving without skin irritation.

The two independently moving razor heads have self-sharpening blades with a long service life. The razor provides cordless operation powered by a built-in rechargeable battery, while the practical LED indicator alerts you when charging is needed.

FEATURES

- **Two independent pivoting razor heads**
- **Self-sharpening shaving blades with an extended service life**
- **Ergonomic design fits perfectly into your hand**
- Smooth shaving with minimal friction
- Operating time of 45 minutes

Multifunction Blade

SHP 0450BK

The SHP 0450BK multifunctional hair and beard trimmer is powered by a professional motor that gives the device the power it needs but is also very quiet.

This makes using it both a comfortable and pleasant experience. Three different attachments (1, 3, or 5 millimetres) allow individual styling, while the ergonomic handle ensures a firm grip. Direct Drive technology lets you style your hair even when the trimmer is charging.



FEATURES

- **Direct Drive technology** allows simultaneous shaving and charging
- The professional motor is powerful and extremely quiet
- Individual styling with 3 interchangeable attachments (1 / 3 / 5 mm)
- Blades made of high-quality stainless steel
- Battery fully charged in two hours
- 45 minutes of operation per charge

DRY SHAVE
for hair and beards



USB-C
charging cable



ERGONOMIC HANDLE
for a firm grip



EASY TO RINSE
under running water



EASY HAIR
and sideburns styling



THREE DIFFERENT
exchangeable attachments

DENTAL CARE

When it comes to oral care, we strive for both health and beauty. Our advanced technologies promote healthy teeth and gums, prevent oral diseases and fight bad breath. Enjoy the help of modern SENCOR electric toothbrushes and oral irrigators and get an unrivaled, bright smile.





A close-up, profile shot of a woman with long, light brown hair, looking upwards and to the right. She is holding a bright red apple in her mouth, with a small bite taken out of it. She is wearing a large, white, teardrop-shaped earring with black beads and a chunky, dark, textured bracelet on her right wrist. The background is a dark, textured blue.

BECAUSE ONLY
PERFECTLY
CLEAN
CAN BE HEALTHY

ELECTRIC SONIC TOOTHBRUSHES

The brand new range of Sencor sonic toothbrushes uses the frequency of 40,000 oscillations per minute to deliver uncompromised results. Compared to a normal toothbrush, plaque is removed more efficiently, while the gums are treated with maximum care. Our Quadpacer technology divides the process into four phases, which helps you be in full control of the thorough cleaning process. The pre-set programs are designed to suit any user, and the UV sterilizer eliminates all germs and bacteria.

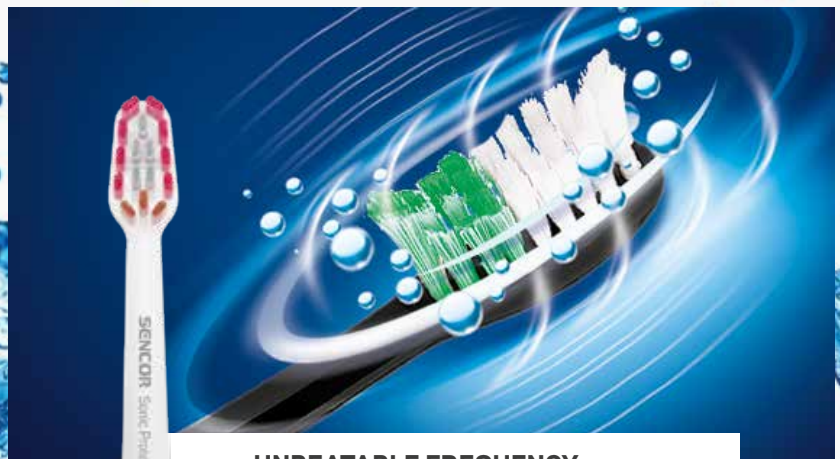
To give you a versatile clean, each toothbrush can hold different heads. The premium head efficiently fights plaque; the whitening brush makes your teeth shine; the sensitive head treats your gums with true gentleness; the interdental brush takes care of any hard-to-reach places.

Naturally, all models are water-safe and low in energy consumption.

WHY CHOOSE A SENCOR ELECTRIC SONIC TOOTHBRUSH

- 40,000 oscillations per minute to deliver perfect cleaning results
- Pre-set programs that suit any user
- Quadpacer technology for more mindful brushing
- Uncompromising health care with a UV sterilizer
- Battery life up to 45 days thanks to low energy consumption

SONIC POWER



UNBEATABLE FREQUENCY

No hand can be as efficient as a SENCOR sonic toothbrush. At a pace of up to 40,000 oscillations per minute, it delivers impressive cleaning results for both your teeth and gums.



Electric Sonic Toothbrush

SOC 4210BL

● SOC 4210BL ● SOC 4211GD

The brand new generation of sonic toothbrushes SOC 4210BL and SOC 4211GD will pamper your teeth and gums with its 4 pre-set programs. With up to 40,000 strokes per minute and Quadpacer technology, the toothbrush helps you achieve the best cleaning results possible.

Both types are equipped with a case featuring a USB connector and UV sterilization. An induction charger and cup are also included. If you're looking for a versatile clean, the premium head option is perfect for you. And to whiten and polish your teeth, you'll find a special whitening head that's ready to get the job done.





FEATURES

- **Up to 40,000 strokes per minute**
- **Sonic technology and UV sterilization**
- **Quadpacer technology for a more conscious cleaning**
- LED battery power level indicator
- Extremely low consumption, the battery lasts up to 45 days under daily use
- IPX7 waterproof protection level (protection against submersion in water)
- Replaceable toothbrush heads
- Magnetic silencing technology ensures silent operation at 65 dB (A)



GLASS CUP WITH INDUCTIVE CHARGER



COMPATIBLE SOC 4X

Compatible with Philips toothbrushes

Premium Toothbrush Head SOX 101, 102

This head offers versatile cleaning for everyday use. The new W-shaped generation of toothbrush heads allows multiple teeth to be cleaned at once. In addition, the specially bundled and shaped fibers make cleaning more effective than with a conventional head.



Whitening Toothbrush Head SOX 103, 104

This smaller head delivers gentler cleaning using anchorless technology, in which the fibers are placed in the head without metal bands. This makes the head ideal for sensitive teeth and also gums, which require gentle treatment.





Sensitive Toothbrush Head SOX 105

Those with very sensitive teeth, as well as children, will enjoy using this head. Its fine fibers help to treat gingivitis and periodontitis, and they are gentle on sensitive tooth necks and implants. The silicone side of the head is specifically designed for tongue cleaning. *



Interdental Toothbrush Head SOX 107

When it comes to a truly thorough cleaning, interdental areas have to be treated with a special toothbrush head. Its shape allows it to get into the difficult-to-reach gaps between teeth, leaving them healthy and clean.



Electric Sonic Toothbrush

SOC 3313PW

The 48,000 strokes per minute work hard to deliver perfect cleaning results. Sonic technology reliably breaks up the plaque around teeth and removes it. All this makes oral hygiene significantly more efficient than a conventional toothbrush, up to 75% more efficient to be exact. The UV light built into the case sterilizes the head in just 8 minutes after each brushing.

This sonic toothbrush comes with two special heads. The premium head provides a comprehensive solution for everyday cleaning. Its bristles are soft, enabling gum regeneration while also preventing tooth decay. The whitening head uses special 3D-shaped sets of bristles, which are firm enough to remove any sign of pigmentation, leaving the teeth shiny and white.

**FEATURES**

- **Up to 48,000 strokes per minute**
- **Sonic technology and UV sterilization**
- **LED battery power level indicator**
- Ergonomically-shaped handle guarantees comfortable handling
- Extremely low consumption, the battery lasts up to 45 days under daily use
- IPX7 waterproof protection level (protection against submersion in water)
- Replaceable toothbrush heads
- Magnetic silencing technology ensures silent operation at 65 dB (A)



Electric Toothbrush

SOC 3311BK

● SOC 3311BK ○ SOC 3312WH

This top-range SENCOR sonic toothbrush with its modern design guarantees perfectly clean teeth and gums as well as maximum user comfort.

Compared to a normal toothbrush, brushing your teeth with an electric sonic toothbrush is more effective in removing plaque and a gentler way to care for your gums. The special case will not only recharge your toothbrush, but its UV stabilizer will also eliminate any germs or bacteria.



FEATURES

- **Frequency: up to 48,000 oscillations per minute**
- **5 pre-set programs**
- **Quadpacer technology: divides cleaning into 4 phases**
- Charging station with UV sterilizer
- Battery life up to 45 days thanks to low energy consumption
- Protection against water immersion
- 2 cleaning heads



Electric Toothbrush

SOC 2200SL

● SOC 2200SL ● SOC 2201RS ● SOC 2202TQ

Five cleaning and regeneration programs offer a wide range of dental care options. A single button is all you need to turn it on, off and switch programmes. Indicator lights let you know your selected frequency and firmness program.

These series 2 sonic toothbrushes come in modern, stylish colours and include a travel charging case.

**FEATURES**

- **Frequency: up to 45,000 oscillations per minute**
- **5 cleaning modes**
- **Special motion mode for healthy gums**
- Quadpacer technology
- Travel charging case
- Protection against water immersion
- Charging station
- 2 cleaning heads



5 PRE-SET PROGRAMS



CHARGING STATION

Electric Toothbrush

SOC 1101RD

● SOC 1100SL ● SOC 1101RD ● SOC 1102TQ

A simple design in three pastel colours: red, blue, and grey - these are the sonic toothbrushes from SENCOR's series 1 basic model line. With just the push of a button, these toothbrushes offer up to 10 frequency and hardness programs. The highest frequency is 41,000 oscillations per minute.

The extremely low energy consumption guarantees a battery life of up to 45 days with regular daily use. The ergonomic handle makes it comfortable to use, and it's great for older kids with adult teeth.

FEATURES

- **Frequency: 41,000 oscillations per minute**
- **1 toothbrush body**
- **2 basic heads**
- 1 charging station/stand
- 1 travel case



ERGONOMIC HANDLE



TRAVEL CASE



COMPATIBLE SOC 1X, SOC 2X, SOC 3X



Premium Toothbrush Head SOX 015

This premium toothbrush head delivers a truly versatile cleaning. Its gentle fibers, which support gum regeneration and prevent dental diseases, make it ideal for everyday use.



Whitening Toothbrush Head SOX 016

Specially bundled and 3D shaped fibers deliver harder impact, which is highly helpful when it comes to pigmentation removal, teeth polishing and whitening.





Sensitive Toothbrush Head SOX 017, 018

Having sensitive teeth and gums does not have to deprive you of the comfort of an electric toothbrush. All you need is a special head, which treats your gums and teeth with care.





Children's Toothbrush

SOC 0910BL

● SOC 0910BL ● SOC 0911RS ● SOC 0912GR

Let your kids enjoy the benefits of electronic sonic toothbrushes that deliver unparalleled hygiene results.

With a brushing speed of up to 26,000 oscillations per minute, the two pre-set cleaning and regeneration programs remove plaque several times better than standard tooth brushing.

Intelligent timer - Quadpacer technology - divides tooth brushing into 4 blocks for the best cleaning results. The LED indicator informs you about the battery power level, while extremely low energy consumption enables the battery to last up to 15 days.

FEATURES

- **Quadpacer technology divides the process into 4 blocks for the best cleaning results**
- **Extremely low energy consumption: the battery lasts up to 15 days**
- **Ergonomically-shaped handle for comfortable use**
- IPX7 waterproof protection level
- Replaceable toothbrush heads
- Worldwide compatibility with 100-240 V enables charging anywhere in the world
- Included contents: 1 toothbrush body, 2 basic heads, 1 charging station and stand in one





QUADPACER TECHNOLOGY
for mindful teeth brushing



LOW ENERGY
consumption



ERGONOMICALLY-SHAPED
handle



SOX 012, 013, 014

Spare toothbrush heads feature a silicone back for tongue cleaning and a front side with special bristles that indicate when the head is ready to be replaced.

**FEEL
THE FLOW**
TO REACH A NEW
LEVEL OF DENTAL CARE

ORAL IRRIGATORS

If you take dental care seriously, you cannot forget oral irrigators. Able to effectively remove bacteria, food particles and plaque from interdental areas and periodontal pockets, an oral irrigator is the best companion for achieving the ultimate oral health. Regular use helps to prevent gum disease, dental tartar and caries, as well as combating unpleasant bad breath.

SENCOR oral irrigators possess advanced features to deliver unrivaled hygiene. A magnetic irrigator holder, high volume tank and powerful pump with several water pressure levels work to address all gum requirements and conditions, including sensitive gums suffering from disease. Different pre-set modes deliver whatever is needed at the moment: a cleaning mode is suitable for everyday use, a massage mode to support blood circulation in the gums and a fresh mode to freshen up and clean the surface.

Take a step ahead in dental hygiene and get yourself an oral irrigator to ensure a healthy smile for years to come.

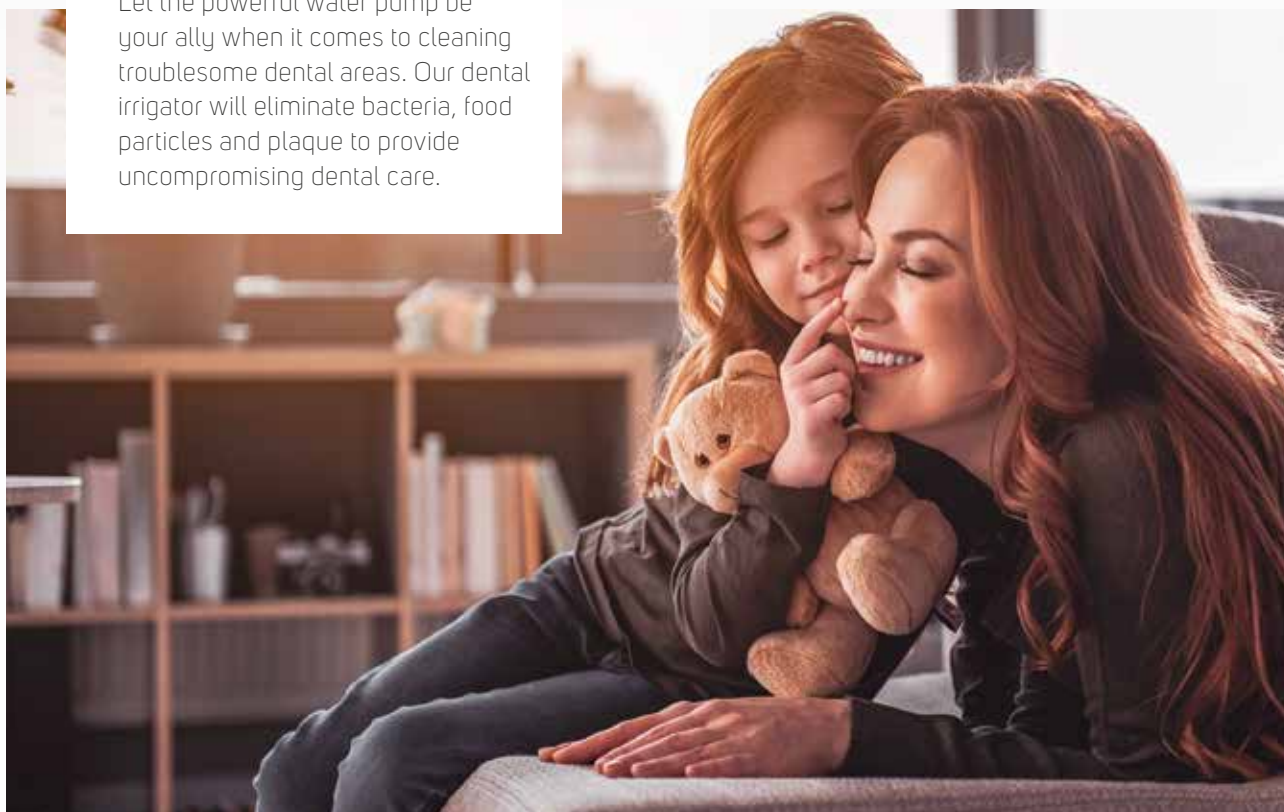
WHY CHOOSE A SENCOR ELECTRIC ORAL IRRIGATOR

- Effectively removes bacteria, food particles and plaque from interdental spaces and periodontal pockets.
- Fights gum disease, dental tartar, caries and unpleasant bad breath
- Features various replaceable heads and cleaning modes to deliver the desired result
- Its water pressure reaches areas that are usually hard to reach
- 2-minute timer with Quadpacer technology ensures quality cleaning
- Comfortable to use with 100 cm long water tube and 360° rotating head

PROTECTIVE FLOW

Let the powerful water pump be your ally when it comes to cleaning troublesome dental areas. Our dental irrigator will eliminate bacteria, food particles and plaque to provide uncompromising dental care.

CARES FOR YOU



Oral Irrigator

SOI 3312WH

Remove bacteria, food particles and plaque from interdental areas and periodontal pockets with this powerful oral irrigator. Five pre-set cleaning and regeneration programs, supported by a pump frequency of 1400 pulses per minute, treat overall oral health.

Four replaceable heads provide a variety of treatments: standard head removes bacteria from teeth and gums, a specialised cleaner cares for the tongue, the cavity cleaner is there for hard-to-reach or sensitive areas and the orthodontic head cleans around braces or hard-to-reach areas around bridges.

FEATURES

- **Tank capacity of 600 ml and 100 cm long water tube for convenient use**
- **Pump frequency of 1400 pulses/minute with 5 water pressure levels to address all gum needs, including sensitive and diseased gums**
- **2-minute timer for optimal cleaning, featuring Quadpacer technology evenly dividing the cleaning process**
- Magnetic irrigator holder for maximum hygiene
- 360° rotating head to clean hard-to-reach spaces





100 CM LONG
water tube



FIVE CLEANING
programs



TANK CAPACITY
600 ml



EXCHANGEABLE HEADS
for uncompromising oral health



SOX 010

SPARE ORAL IRRIGATOR HEADS
Compatible with SENCOR SOI 3x oral irrigator



Oral Irrigator

SOI 2201RS

● SOI 2200SL ● SOI 2201RS ● SOI 2202TQ

Prevent gum disease, cavities, tartar build-up and bad breath with this oral irrigator, which effectively removes bacteria, food particles and plaque from interdental areas and periodontal pockets. Four types of exchangeable heads work under continuous water pressure control with 10 possible water pressure levels to clean any hard-to-reach areas. The massage function helps to improve blood supply to the gums and improves their regeneration.

Usage is comfortable and safe: the water flow can be turned on and off directly on the handle, and the safe energy source is suitable even for damp bathrooms.

FEATURES

- **4 types of exchangeable heads for uncompromising oral health included**
- **Suitable for braces or bridge cleaning**
- **Magnetic irrigator holder for maximum hygiene**
- Quadpacer technology to evenly divide the cleaning time
- Tank capacity: 600 ml
- Pump frequency: 1400 pulses/minute

ACCESSORIES

- Standard head ideal for normal cleaning, removes bacteria from between the teeth and gums
- Tongue cleaner for cleaning the tongue, removes bacteria, food particles and dead cells from the surface
- Cavity cleaner for cleaning hard-to-reach or sensitive areas, the special construction ensures quality cleaning even when low pressure is used
- Orthodontic head for cleaning around braces or hard-to-reach areas around bridges



SOX 007, 008

SPARE ORAL IRRIGATOR HEADS

Compatible with SENCOR SOI 2x oral irrigator



Oral Irrigator

SOI 1101RD

○ SOI 1100SL ● SOI 1101RD ● SOI 1102TQ

Eliminate bacteria, food particles and plaque in interdental areas and periodontal pockets with this oral irrigator featuring replaceable heads for perfect cleaning.

By massaging the gums, the oral irrigator improves their blood supply, thus providing regeneration. A water current with a pressure of 620 kPa gets into hard-to-reach areas in three modes: the regular mode used for everyday cleaning, soft for taking care of sensitive areas and pulse which improves the blood supply and massages the gums.



FEATURES

- **5 types of exchangeable heads for uncompromising health and hygiene**
- **Suitable for braces or bridge cleaning**
- **Charging time of 8 hours for the battery to last 2 weeks when cleaning 2x per day**
- LED "recharge needed" indicator
- Tank capacity: 150 ml
- Pump frequency: 1400 pulses/minute
- Water pressure: 620 kPa

ACCESSORIES

- Standard head ideal for normal cleaning, removes bacteria from between teeth and between the teeth and gums
- Tongue cleaner for cleaning the tongue and mouth, removes bacteria, food particles and dead cells from the surface
- Cavity cleaner for cleaning hard-to-reach or sensitive areas, special construction ensures quality cleaning even when low pressure is used
- Orthodontic head for cleaning around braces or hard-to-reach areas around bridges



TANK CAPACITY
600 ml



4 EXCHANGEABLE
heads



SOX 005, 006

SPARE ORAL IRRIGATOR HEADS

Compatible with SENCOR SOI 2x oral irrigator



HEALTH CARE

If a healthy lifestyle is what you're looking for, SENCOR advanced personal scales and home blood pressure monitors will become your daily companions. The scale will provide you with all the important data and measurement memory to help you adjust your diet or workout in order to achieve your weight goals, while the blood pressure monitor will inform you about possible risks, so that you can take timely action to protect your health as soon as the first sign of any disorder appears.



A woman with dark hair in a ponytail, wearing a grey sports bra, is drinking from a white water bottle with a black cap. She is standing in front of a window with a brick wall below it. The text "INTELLIGENT TOOLS FOR YOUR HEALTHY LIFESTYLE" is overlaid on the bottom right of the image.

INTELLIGENT TOOLS

FOR YOUR HEALTHY
LIFESTYLE

PERSONAL SCALES

No longer is a personal scale a simple device that displays a single number. This modern appliance can be considered a nutritional consultant, providing you with information on your BMI, BMR, body fat and hydration, and calorie intake per day for reference.

Advanced SENCOR scales communicate with a special app; different user profiles can be set (including age, gender and height) with their weight targets and the extent of standard daily physical activity defined. That means every user can easily and accurately follow his or her own weight gain or loss.

Thanks to their slim design and tempered glass surface, our scales are elegant and practical, able to support loads of up to 180 kg and show results within 100 g of accuracy. The extra-large backlit LCD display makes data easy to read, and the Auto On function makes the scale ready to work just as you step on it. Take control of your weight with the support of our state-of-the-art personal scales!

WHY CHOOSE A SENCOR PERSONAL SCALE

- Bluetooth connection with the app to track body weight changes
- Slim design and tempered safety glass surface for easy cleaning
- Convenient use with Auto On function (weighs immediately when stepped on) and automatic shut-off when idle
- Extra-large backlit LCD display for easy reading
- Low battery and overload indicator
- Data lock function for more accurate measurement (the weight measured remains visible for 10 seconds)

SENCOR HEALTH



TRACK YOUR ACHIEVEMENTS

Streamline your way to your optimal body weight with SENCOR's personal scale connected to our app, which keeps your complete measurement history, outlines trends and creates reports to help you achieve a healthier life.

Personal Scale

SBS 8802BL

This fitness scale uses Bluetooth to provide access to your data anytime you wish by communicating with the SENCOR HOME App (both for iOS and Android). Its stylish surface is made of indium tin oxide glass, which is 6 mm thick and features a large white LED display for easy reading.

Multiple user profiles log the percentage of body fat, hydration, muscle, bone, and protein, altogether with your visceral fat index, body lean mass, and skeletal muscle. Get accurate measurements from hand-grip sensors with 8 electrodes and 6 measuring channels.



EXTRA-LARGE BACKLIT
LCD display



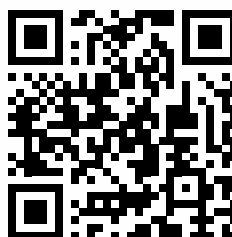
BLUETOOTH
communication with SENCOR
Application



SENCOR HOME application

- Multiple User Profiles
- 15 Languages: EN, CZ, SK, HU, PL, RU, HR, IT, ES, FR, DE, PT, AR, GR, FI
- Measurement history
- Trends
- Reports

Download SENCOR app from Google PLAY and App Store



FEATURES:

- **Bluetooth and SENCOR HOME app for iOS & Android**
- **Large white LED display on indium tin oxide glass (6 mm)**
- **Auto ON/OFF**
- Hand grip with sensors, 8 electrodes and 6 measuring channels for accurate results
- Multiple user profiles, data storage, connection to Apple Health
- Measures: body fat %, hydration %, muscle %, bone %, protein %, visceral fat index, body lean mass, skeletal muscle
- Health report with body score and suggestion
- Weighing capacity: 180 kg / Division: 100 g



Tempered glass fitness scales with an ultra-slim design show the measured weight on a large LCD display and measure the following parameters:

BMR (NUMBER OF CALORIES THE BODIES NEEDS IN A RELAXED STATE IN ORDER TO MAINTAIN ALL BODY FUNCTIONS)

AMR (NUMBER OF CALORIES THE BODIES NEEDS DURING PEAK ACTIVITY)

% OF BODY FAT

% OF WATER IN THE BODY

% OF MUSCLE MASS IN THE BODY

% OF BONES

BMI



Personal Scale

SBS 8000BK

The most modern smart scale will meet the needs of even the most discerning customers. Thanks to Bluetooth, it enables the user to follow all key parameters on his or her smartphone or tablet.



This model's app enables the user to set multiple user profiles in 15 languages. Based on user preference, it can measure weight in kilograms or pounds. The app does not only allow the user to enter his or her age, gender and height, it also lets him or her enter a target weight and an amount of standard daily physical activity. Every user can therefore accurately follow his or her weight gain or loss. The app also offers a lexicon of key terms and a guide to all the scale's functions.

The ultra-slim scale made from 6 mm thick tempered glass can be used by individuals weighing up to 180 kilograms. Thanks to the Auto-On function, the scale starts weighing as soon as the user steps on it. The scale, featuring an easily readable LCD display, is powered by two 1.5V batteries (AAA).

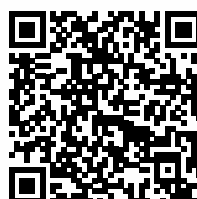
**FEATURES**

- **Bluetooth**
- **Measures key body parameters**
- **Calculates calories needed per day for reference**
- Memory for multiple users
- Soft-touch buttons
- Slim design (22 mm)
- Glass surface for easy cleaning
- Tempered safety glass (6 mm)
- Weight up to 180 kg (within a 100 g range)
- Auto-On function (weighs immediately when the scale is stepped on)
- Extra-large, white backlit LCD display (74×35.6 mm)
- Option to select measuring units (kg/lb)
- Weak battery and overload indicator
- Automatic shut-off when idle
- Data lock function for more accurate measurement (the measured weight remains visible for 10 seconds)

**SENCOR HEALTH aplikace**

- Multiple users profiles
- 15 languages EN, CZ, SK, HU, PL, RU, HR, IT, ES, FR, DE, PT, AR, GR, FI
- Measurement history
- Trend
- Reports

Download SENCOR app from Google PLAY and App Store





Personal Fitness Scale

SBS 6026BK

○ SBS 6025WH ● SBS 6026BK

This personal fitness scale will give you an overview of your body's condition quickly and easily.

Measuring more than just weight, it provides information on various body parameters and analyses them (share of body fat, water, muscle, bones, BMI). The scale is also easy to control using the touch buttons and backlit display. And its glass weighing platform design will complement any room.

FEATURES

- **Measures body parameters: body fat %, water %, muscle %, bones %, BMI**
- **Memory for 12 users with automatic user recognition function**
- **Hardened safety glass (6 mm) and large backlit LCD display**
- Combination of glass and stainless steel surface for easy maintenance
- Touch controls
- Weighing range up to 180 kg (resolution 100 g)
- Auto-On function (scale weighs immediately when stepped on)
- Special active athlete mode
- Unit selection option (kg/lb/st:lb)
- Flat battery indicator and overload indicator
- Automatic shut-off when idle



Personal Scale

SBS 5050BK

● SBS 5050BK ○ SBS 5051WH

A smart glass scale with an ultra-slim design featuring a large LCD display, memory for 12 user profiles and a weight limit of 150 kilograms.

This smart scale will not only accurately calculate the user's BMI and BMR, but also recommend the optimal daily calorie intake and percentage of fat and water in the body. A light indicates when the battery is low. The scale is powered by 1 lithium battery (included).

FEATURES

- **Ultra-Slim Design (20 mm) with a tempered glass surface for easy cleaning (6 mm)**
- **Extra-large LCD Display (74 × 28.5 mm) and big press buttons for easy use**
- **Memory for 12 users**
- Weight up to 150 kg (sensitivity 100 g)
- Calculates BMI, BMR function, and daily calorie intake for reference
- Auto-On function (weighs immediately when stepped on) and automatic shut-off when idle
- Option to select measuring units (kg/lb)
- Low battery and overload indicator
- Data lock function for more accurate measurement (measured weight remains visible for 10 seconds)



Personal Scale

SBS 2300BK

● SBS 2300BK ○ SBS 2301WH ● SBS 2302SN

The glass surface made of 5 mm tempered safety glass ensures that this slim-design scale (21 mm) has both an elegant look and is easy to clean.

The Auto-On function activates the scale immediately when stepped on, providing accurate measurement thanks to four high precision sensors. In order to achieve even more accurate weighing, the data lock function keeps the measured weight visible on the display for 10 seconds. The maximum load is 150 kg, and an overload indicator informs if this is exceeded. The scale is powered by 1x CR2032 lithium battery and features a low battery indicator.

FEATURES

- **Tempered safety glass (5 mm) surface for easy cleaning**
- **Slim design (21 mm) with extra-large LCD display (74 × 28.5 mm)**
- **Weight limit of 150 kg (sensitivity 100 g) with 4 high-precision sensors for accurate weighing**
- Auto-On function (weighs immediately when stepped on) and automatic shut-off when idle
- Data lock function displays data for 10 seconds, providing more accurate results
- Option to select measuring units (kg/lb)
- Low battery and overload indicator
- Power source: 1x CR2032 Lithium Battery (Included)



Personal Scale

SBS 113SL

This ultra-slim personal scale made of tempered glass offers an appealing, clean design and a large LCD display.

Thanks to 4 sensors, it can measure up to 150 kilograms with great precision. It is powered by 1 lithium battery.

FEATURES

- **4 high precision sensors for accurate weighing**
- **Glass surface for easy cleaning of the tempered safety glass (6 mm)**
- Slim design (24 mm)
- Weight up to 150 kg (sensitivity 100 g)
- Auto-On function (weighs immediately when the scale is stepped on)
- The extra large LCD display (74 × 28.5 mm)
- Data lock function for more accurate measuring
- Option to select measuring units (kg/lb)
- Weak battery and overload indicator
- Automatic shut-off when idle



A NUTRITIONIST

IN YOUR KITCHEN

NUTRITION SCALES

Can a scale be smart? This one by SENCOR certainly is! The new range of kitchen scales connects via Bluetooth to the SENCOR FOOD app and provides you with the complete nutritional information you need.

The SENCOR FOOD app is compatible with the popular Dine4fit app, which has an impressive database of foods and their nutritional values. The app first shows you the weighed amount. You select the item from the list of foods to which the figure relates, and the app itself evaluates the amount of fats, sugars, proteins, and other nutritional parameters. With one click, you can cross-reference each meal in your Calorie Charts to keep a long-term record.

Of course, SENCOR hasn't forgotten about style. That's why the nutrition scales from the metallic range are available in nine colours. The large round display, which, of course, is perfectly legible and clear, highlights its design.

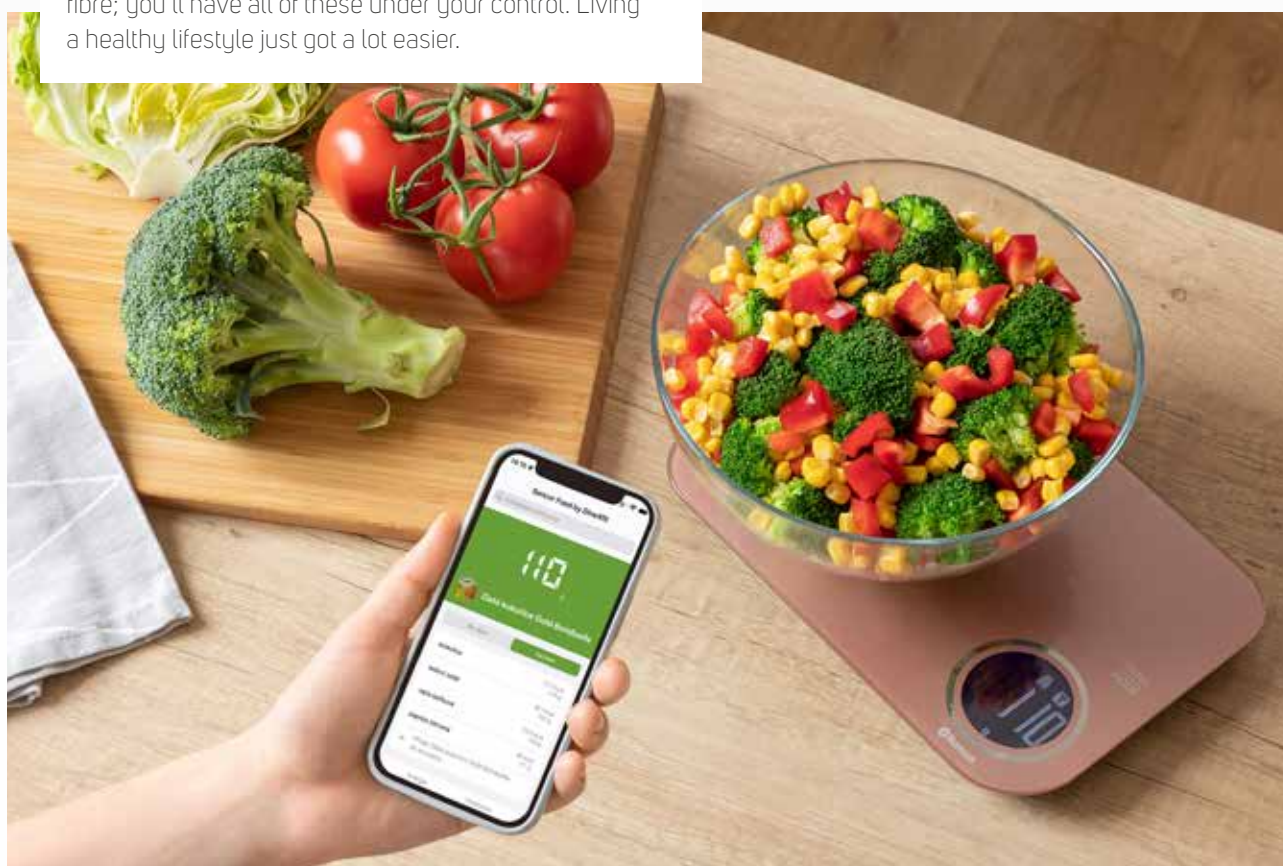
WHY CHOOSE A SENCOR NUTRITION SCALE

- Connects to your mobile device via Bluetooth
- SENCOR FOOD interface from the authors of the Dine4fit app
- Extensive database of foods and their nutritional values
- Read data can be easily transferred to your personal diet in the Dine4fit app

MODERN TECHNOLOGY AT THE SERVICE OF HEALTH

Would you like to have your own nutritionist at home? Our nutritional scales give you just that. Using Bluetooth, they connect to the SENCOR FOOD app on your phone and give you a perfect overview of calories and food nutrients. Carbohydrates, proteins, fats, cholesterol, or fibre; you'll have all of these under your control. Living a healthy lifestyle just got a lot easier.

SENCOR FOOD APP





Smart Kitchen Scale

SKS 7078BK

● SKS 7070GG ● SKS 7071GR ● SKS 7072BL
 ● SKS 7073VT ● SKS 7074RD ● SKS 7075RS
 ● SKS 7076GD ● SKS 7077CH ● SKS 7078BK

The smart kitchen scale and the SENCOR FOOD app will help you keep perfect track of your calorie and nutrient intake.

Just connect the scale to your phone. Its display will show the weight, and once you enter what you weigh, you get the nutritional information. The scale is not only smart but looks great. With nine different metallic colours and a round display, it will suit any kitchen.

SENCOR



FEATURES

- **The original SENCOR FOOD app with a vast food database**
- **Displays nutritional values so you can optimise your diet (carbohydrates, proteins, fats, cholesterol, fiber, etc.)**
- **White backlit, round LCD display**
- Weighing capacity of up to 5 kg/11 lb (1 g/0.1 oz resolution)
- Automatic shutdown when idle
- 3 modes: weighing/milk volume measurement/water volume measurement
- Intelligent TARA function





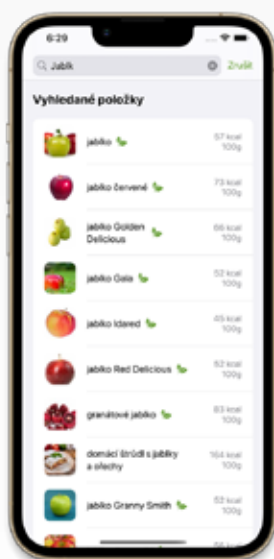
The app was developed in collaboration with the creators of the Dine4Fit app. Thanks to this cooperation, SENCOR FOOD offers direct access to a vast and regularly-updated database of foods and their nutritional values.

The scale connects to your phone automatically when the app is launched. All you need to do for pairing is turn on the Bluetooth function on your smart device. An internet connection is required to search for food items.

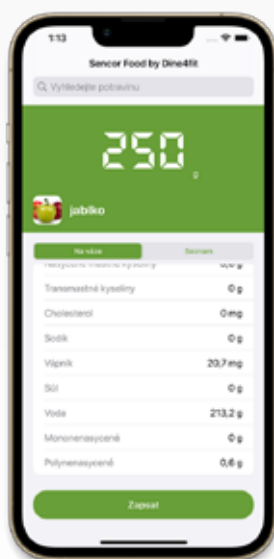
SENCOR FOOD offers two weighing modes: "On the scale" for a quick display of information

about the item currently being weighed, and "List" mode, which allows you to find out the cumulative nutritional value of multiple foods. This mode is useful, for example, when following a recipe to prepare a dish.

The SENCOR FOOD app is interlinked with the Dine4Fit app. Once you've finished weighing, you can enter the items into your Dine4Fit profile with a single click and keep a long-term overview of your food intake (some advanced features of the Dine4Fit app may be charged).



EXPANSIVE DATABASE
of food items



CLEARLY PRESENTED
nutritional facts



INFORMATION
on the weighed item



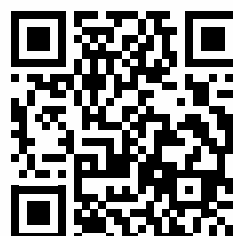
NUTRITIONAL FACTS
for several items



SENCOR FOOD application

- detailed nutritional values and calorie calculator
- access to 400,000 food items in the database
- linked to the Dine4Fit app - option to import data into a daily menu

Download SENCOR app from Google PLAY and App Store





FEEL THE HEARTBEAT,
FEEL LIFE

BLOOD PRESSURE MONITORS

You may have experienced changes in your blood pressure when having it measured at your general practitioner's or the hospital. No wonder, an unusual place can cause us stress and thus influence the measurement results. A home blood monitor is therefore a great tool for tracking daily systolic and diastolic blood pressure and heart rate. All measurements are easy to read thanks to a large LCD display.

Use of the home blood pressure monitor is very simple: the device features an adjustable pressure cuff, automatic inflation and air release of the cuff, and memory for up to 60 measurements, including the date and time for each measurement.

With a SENCOR blood pressure monitor, you can be in control of how your heart performs and take care of your health in the comfort of your own home.

FROM THE COMFORT OF YOUR HOME

Measure your systolic and diastolic blood pressure and heart rate whenever you wish from the comfort of your home. The SENCOR blood pressure monitor is your new ally for health management.

WHY CHOOSE

A SENCOR BLOOD PRESSURE MONITOR

- Easy at-home measurement of systolic and diastolic blood pressure and heart rate
- Cardiac arrhythmia warning indicator to protect your health
- Large LCD display for comfortable reading
- Memory for up to 60 measurements, date and time of measurement included
- Adjustable cuff with automatic inflation and air release

FOR YOUR HEALTH



Blood Pressure Monitor

SBP 6800WH

Easy and convenient blood pressure measurement? Yes, with SBP 6800WH! This appliance has been designed for easy measurement in your home.

Featuring the ComfortMe Technology, you can accurately monitor yourself without any pain or irritation. The reliability and accuracy of its blood pressure and heart rate measurement has been proven under vigorous testing by major health organisations.

FEATURES

- **MWI Technology for the accurate measurement of blood pressure and heart rate**
- **ComfortMe Technology for pleasant blood pressure monitoring**
- **Body movement detection**
- Irregular heartbeat indication
- Adjustable pressure cuff diameter, 22–42 cm
- Averaging function: calculates the average of the 3 most common data sets
- Large LCD 3-line display: 65 × 50 mm
- Memory for 60 measurements with date and time
- Range of measurement (pulse): 40–199 beats/min
- Range of measurement (pressure): 0–299 mmHg
- Measuring accuracy: blood pressure 3 mmHg, pulse 5% measured
- Three Mechanical Buttons: START/STOP, SET, MEM



BATTERY POWERED
4x AAA



ADJUSTABLE BLOOD
PRESSURE CUFF
22–24 cm



LARGE LCD DISPLAY
65 x 50 mm

Blood Pressure Monitor

SBD 1470WH

This small digital blood pressure monitor is easy to use at home or when you are on the move. The device measures systolic and diastolic blood pressure and heart rate on the wrist. The blood pressure cuff can be set to an arm girth of up to 19.5 cm.

The device has a large LCD display and memory for up to 60 measurements. It displays increased blood pressure values (hypertension) graphically and can also alert you to cardiac arrhythmia. Model SBD 1470 features a low-battery indicator. Powered by four AAA batteries.

FEATURES

- **For easy measurement under domestic conditions**
- **Measures systolic and diastolic blood pressure and heart rate**
- **Cardiac arrhythmia warning indicator**
- Graphic display of increased blood pressure values (mild / medium / severe hypertension)
- Adjustable pressure cuff diameter of 13.5–19.5 cm
- Large LCD display (31 × 44 mm)
- Memory for up to 60 measurements (for 1 user) including recording the data and time of each measurement
- Automatic inflation and air release of the cuff



Blood Pressure Monitor

SBP 690

A device for measuring systolic and diastolic blood pressure and heart rate on the arm.

The large LCD display shows perfectly legible readings. Large and graphically distinctive buttons allow easy operation. It graphically indicates suspected hypertension and/or cardiac arrhythmia. It provides memory for up to 60 measurements for one user. The device indicates low battery and data remain in the memory even after battery replacement. Powered by four AA batteries.

FEATURES

- **For easy measurement under domestic conditions**
- **Measures systolic and diastolic blood pressure and heart pulse rate**
- **Memory for up to 60 measurements (for 1 user)**
- Graphic display of increased blood pressure values (mild / medium / severe hypertension)
- Cardiac arrhythmia warning indicator
- Adjustable pressure cuff diameter of 22–42 cm
- Extra large LCD display (61 × 93 mm)
- Memory for up to 60 measurements (for 1 user) including a recording of the date and time of each measurement
- Automatic inflation and air release of the cuff





BODY CARE

No more having a cold bed when a warm duvet is what you need the most. With a SENCOR electric blanket, you will enjoy a nicely heated bed anytime you need one. And what's more – you do not have to negotiate with your partner about the temperature, since each side of the double-bed sized electric blanket can have its own controller! So slip into your bed and feel pampered.



A close-up photograph of a middle-aged couple smiling and embracing outdoors. The man, on the left, has a beard and is wearing a teal sweater and a patterned scarf. The woman, on the right, has blonde hair and is wearing a yellow knit sweater. The man is holding a white mug. The background is a soft-focus outdoor setting with greenery.

ENJOY THE
PLEASURE OF A
**WARM
BED**

ELECTRIC BLANKETS

Chilly days may come at any time of year. But no worries, with a SENCOR electric blanket, your bed will always be a warm and welcoming place after a hard day. Electric blankets come in three designs: you can choose the single or double-bed size, or decide in favor of a foot warmer to suit your needs.

When using the largest blanket, no compromises on your personal preferences are necessary, since each side features its own remote control to adjust the temperature just as you wish.

Your comfort is guaranteed by the gentle-to-the-skin material, while an automatic switch-off after three hours, overheating protection and automatic cut-off in case of damage secure your safety.

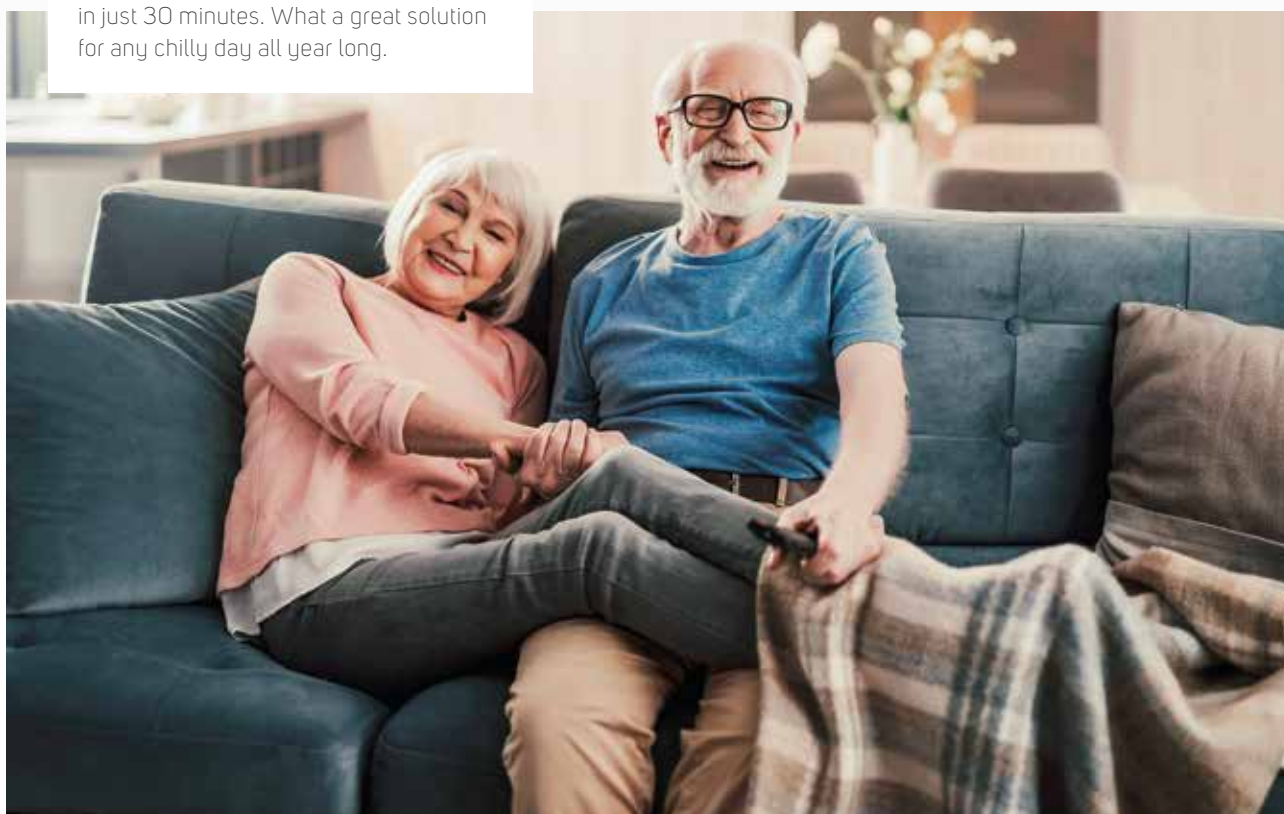
WHY CHOOSE A SENCOR ELECTRIC BLANKET

- Dimensions for either a double or single bed
- Remote control and temperature setting for your comfort
- Easy maintenance thanks to removable cables with remote controls
- Gentle-on-the-skin material ensures a pleasant experience
- "On" indicator light and overheating protection for your safety

GOOD BYE, COLD BED

Never ever again will you have to warm up the bed yourself since the SENCOR electric blanket can do the job for you in just 30 minutes. What a great solution for any chilly day all year long.

HEATED BLANKET



Electric Blanket

SUB 2001B

● SUB 2000G ● SUB 2001B

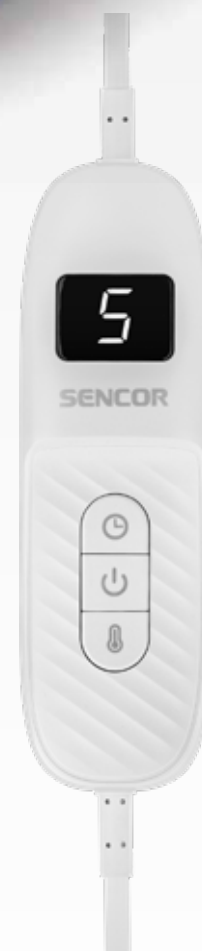
Whenever you start feeling cold, all you have to do is to switch your heated overblanket on. Its extra soft, fluffy material will pamper you, just as the nine different temperature settings will keep you perfectly warm to your liking. Japanese wire technology makes it highly reliable and also safe to use.

The triple safety system features electronic overheating protection, automatic cut-off in case of damage, and an automatic switch-off after three hours.



FEATURES

- **Extra soft, fluffy Sherpa material**
- **Japanese wire technology ensures a reliable product**
- **9 illuminated temperature settings**
- **XL size**
- Washable with a detachable controller
- Electronic overheating protection
- Automatic cut-off in case of damage
- Automatic switch-off after 3 hours
- Rapid heat up
- Size: 180 × 130 cm
- Power: 160 W



XL SIZE 180 X 130 CM



WASHABLE WITH
DETACHABLE CONTROLLER



EXTRA SOFT,
FLUFFY SHERPA

Electric Blanket SUB 291

With two independent remote controls and two temperature levels, this electric blanket delivers so much comfort for two people on a double bed (160 × 140 cm). The recommended preheating time is 30 min. The blanket, made of 100% polyester, is washable (cables with remote controls can be easily removed). The indicator informs you if it is turned on, and the overheating protection ensures your safety.

FEATURES

- **Dimensions for two people on a double bed (160 × 140 cm)**
- **2 independent remote controls and 2 temperature setting levels**
- **Recommended preheating time 30 min.**
- Washable (removable cables with remote controls)
- Material: 100% polyester (synthetic fleece)
- "On" indicator light and overheating protection
- Length of power cord: 2.0 m
- Power input 2×60 W



Electric Blanket SUB 2700WH

Enjoy the gentle-on-the-skin and breathable soft fleece fabric with stamp welding which provides greater durability. The blanket is easy to attach to the mattress with elastic cords and easy to wash thanks to the detachable controller. Unparalleled comfort is ensured by three illuminated temperature settings and a generous double-bed size (160 × 140 cm). Japanese wiring technology delivers high reliability with an advanced safety system, featuring automatic switch-off after three hours, electronic overheating protection and automatic cut-off in case of damage.

FEATURES

- **The comfort of gentle-on-the-skin and breathable materials**
- **Soft fleece fabric (polyester) with stamp welding for greater durability**
- **Japanese wire technology ensures high reliability**
- Highly comfortable extra-sponge layer
- 3 illuminated temperature settings
- Easy to attach to the mattress with elastic cords
- Washable with a detachable controller
- Double Size: 160 × 140 cm
- High-level safety system featuring electronic overheating protection and automatic cut-off in case of damage
- Automatic switch-off after 3 hours



SOFT FLEECE FABRIC



DOUBLE-BED SIZE



WASHABLE
thanks to removable cables with
remote controls

Electric Blanket

SUB 281BE

Two independent remote controls and the size of a double bed (160 × 140 cm) make this electric blanket a real pleasure. Two temperature setting levels are ready to provide the desired comfort after the recommended 30 minute preheating time.

The blanket, made of 100% polyester (Polar Fleece), is washable thanks to the removable cables with remote controls.

FEATURES:

- **Size of a double bed (160 × 140 cm)**
- **2 temperature setting levels with 30 minute recommended preheating time**
- **Washable 100% polyester polar fleece thanks to the removable cables with remote controls**
- "On" indicator light and overheating protection
- Length of power cord: 2.0 m
- Power input 2×60 W



Electric Blanket

SUB 1700WH

This single-bed sized electric blanket will pamper you with its highly comfortable extra-sponge layer. All materials used are gentle-on-the-skin and breathable, and the soft fleece fabric with stamp welding provides extra durability.

Japanese wiring technology ensures extraordinary durability, also supported by overheating protection. Choose one of three temperature settings and have the blanket heated rapidly to provide you with a warm place to rest whenever you need one.

FEATURES

- **3 illuminated temperature settings**
- **Easy to attach to the mattress with elastic cords**
- **Washable with a detachable controller**
- High-level safety system featuring overheating protection and automatic cut-off in case of damage
- Automatic switch-off after 3 hours
- Single bed size: 150 × 80 cm



ELECTRONIC TEMPERATURE
CONTROL



Electric Blanket

SUB 181BE

Great to use and easy to maintain: this electric blanket, which fits a single bed (150 x 80 cm), will give your bed uncompromising temperature comfort no matter how cold the weather gets.

With two temperature setting levels, you can select the one that best suits you, and when needed, you can wash it thanks to its removable cable.

FEATURES

- **Dimensions for one person**
- **Remote control**
- **Recommended preheating time of 30 min.**
- "On" indicator light
- Overheating protection
- Length of power cord: 2.0 m
- Power input of 60 W
- Washable, 100% polyester (Polar Fleece) thanks to the removable cable with remote control



Electric Blanket

SUB 0700BE

Your feet will never be cold again with our foot warmer. The extra-soft, fluffy fabric will give you the most pleasant experience.

Three illuminated temperature settings and automatic switch-off function after 90 minutes make it comfortable to use. A high level of safety is ensured by the electronic overheating protection and automatic cut-off in case of damage.

FEATURES

- **Skin-friendly with breathable microfleece**
- **Electronic temperature control of three illuminated temperature settings**
- **Automatic switch-off after 90 minutes**
- High-level safety system: electronic overheating protection and automatic cut-off in case of damage
- Washable, removable fluffy lining
- Fabric: 100% Polyester
- Product size: 30 x 30 x 24 cm
- Power input: 100 W



BREATHABLE MICROFLEECE



REMOVABLE FLUFFY LINING

FLAT IRONS



MODEL	SHI 5600GD	SHI 5300GD	SHI 5200GD	SHI 5500GD	SHI 4500GD
Power	55 W	50 W	50 W	50 W	60 W
Plate surface	titanium coating	titanium coating	titanium coating	titanium coating	titanium coating
Cable	textile cord - gold	textile cord - gold	textile cord - gold	textile cord - gold	textile cord - gold
Travel case	yes	yes	yes	yes	yes
Magnetic giftbox	yes	yes	yes	yes	yes
White display	yes	yes	yes	yes	yes

FLAT IRONS



MODEL	SHI 4400GD	SHI 6300GD	SHI 3100VT	SHI 1100BK	SHI 131GD	SHI 110BK
Power	45 W	50 W	42 W	45 W	40 W	40 W
Ion	yes active	yes passive (on soleplate)	yes passive (on soleplate)	yes passive (on soleplate)	-	-
Travel case	yes	yes	-	-	-	-
Magnetic giftbox	yes	yes	-	-	-	-
White display	yes	yes	-	-	-	-

AUTOMATIC HAIR CURLER



MODEL	SHS 0900GD	SHS 0910GD
Temperature settings	11	2
Cold air	yes	yes
Ionisation	yes	yes
Number of attachments	-	2
Power	45 W	1000 W

CURLING IRONS



MODEL	SHS 8603	SHS 0920BK	SHS 0850BK
Temperature settings	1	5	5
Cold air	-	-	-
Ionisation	-	yes	-
Number of attachments	-	-	-
Power	38 W	62 W	42 W

HOT AIR CURLING IRON



MODEL	SHS 7551VT SHS 7551RD	SHS 8401BK	SHS 3000BK
Temperature settings	2	2	2
Cold air	yes	yes	yes
Ionisation	yes	yes	-
Number of attachments	7	2	-
Power	1000 W	1000 W	400 W

HAIR DRYERS



MODEL	SHD 8200GD	SHD 8275BK	SHD 8100GD	SHD 6701RD SHD 6700VT
Motor	AC	AC	AC	DC
Power	2400 W	2400 W	2100 W	2000 W
Power levels	3	3	3	3
Speeds	2	2	2	2
Cool shot	yes	yes	yes	yes
Ionisation	yes	yes	yes	-
Folding handle	-	-	-	-
Removable rear vent cover	yes	yes	yes	yes
Diffuser	yes	yes	yes	yes
Length of power cord	3 m	2 m	2.2 m	2.6 m

HAIR DRYERS



MODEL	SHD 6600V SHD 6600 SHD 6600W	SHD 6800RG	SHD 108VT
Motor	DC	AC	DC
Power	2000 W	2300 W	2200 W
Power levels	3	3	3
Speeds	2	2	2
Cool shot	yes	yes	yes
Ionisation	-	yes	yes
Folding handle	-	-	-
Removable rear vent cover	yes	yes	yes
Diffuser	-	yes	yes
Length of power cord	2.6 m	1.7 m	1.7 m

HAIR DRYERS



MODEL	SHD 0045BK	SHD 7200GD	SHD 7100BK	SHD 6400V SHD 6400B
Motor	DC	DC	DC	DC
Power	1600 W	2000 W	2000 W	850 W
Power levels	3	3	3	2
Speeds	2	2	2	1
Cool shot	yes	yes	yes	yes
Ionisation	-	yes	yes	-
Folding handle	yes	yes	yes	yes
Removable rear vent cover	yes	yes	yes	-
Diffuser	-	yes	-	-
Length of power cord	1.8 m	1.7 m	1.8 m	1.7 m

HAIR CLIPPERS



MODEL	SHP 8900BK	SHP 8400BK	SHP 8305BK	SHP 7411BK
Power	Network / Aku	Network / Aku	Network / Aku	Network / Aku
Interchangeable attachments	7	8	12	12
Blade width	46 mm	46 mm	39 mm	34 mm
Titanium blades	yes	yes	yes	yes
Direct Drive	yes	yes	yes	yes
Charging time	2 hours	2 hours	2 hours	2 hours
Operating time	3 hours	2 hours	1 hour	2 hours
Travel case	-	yes	yes	-
Stand	-	-	yes	yes

HAIR CLIPPERS



MODEL	SHP 4302RD	SHP 3500BL	SHP 3301BL	SHP 320SL
Operation	Network / Aku	Network / Aku	Network / Aku	Network
Guide comb attachments	1	4	1	4
Blade width	35 mm	28 mm	25 mm	45 mm
Charging time	8 hours	2 hours	8 hours	-
Operating time	50 minutes	1 hour	50 minutes	-
Stand	-	-	-	-

HAIR
CLIPPERS

MODEL	SHP 7201SL	SHP 6201RD	SHP 5207CH	SHP 4502BL SHP 4501BK
Power	Network / Aku	Network / Aku	Network / Aku	Network / Aku
Interchangeable attachments	7	6	2	2
Blade width	41 mm	41 mm	40 mm	39 mm
Titanium blades	yes	yes	yes	
Direct Drive	yes	yes	yes	
Charging time	8 hours	8 hours		8 hours
Operating time	45 minutes	45 minutes	90 minutes	40 minutes
Travel case	-	-	-	
Stand	yes	-	-	yes

HAIR
CLIPPERS

MODEL	SHP 460CH	SHP 211SL	SHP 101BL
Operation	Network	Network	-
Guide comb attachments	4	4	-
Blade width	45 mm	45 mm	-
Charging time	-	-	-
Operating time	-	-	-
Stand	-	-	yes

MEN'S ELECTRIC SHAVERS



MODEL	SMS 7000BK	SMS 5520BL	SMS 5510BK	SMS 501x	SMS 4210BK
4D technology	yes	yes	yes	yes	yes
Floating heads	3	3	3	3	3
Operation	Corded/cordless	Corded/cordless	Corded/cordless	Corded/cordless	Corded/cordless
Operating time	3 hours	60 minutes	60 minutes	40 minutes	50 minutes
Charging time	3.5 hours	1.5 hours	1.5 hours	2 hours	2 hours
Trimmer	yes	yes	yes	yes	yes
Travel case	-	-	-	yes	-

MEN'S ELECTRIC SHAVERS



MODEL	SMS 401x	SMS 2001BK SMS 2002RD
4D technology	-	-
Floating heads	3	2
Operation	Corded/cordless	Corded/cordless
Operating time	75 minutes	45 minutes
Charging time	8 hours	8 hours
Trimmer	-	-
Travel case	-	-

MULTIFUNCTION BLADE



MODEL	SHP 0450BK
Powered by	LION Battery
Replaceable attachments	3
Width of blade	29 mm
Titan blade	-
Direct Drive	yes
Charging time	2 hours
Operation time	45 minutes
Travel case	-
Stand	-

ELECTRIC SONIC TOOTHBRUSHES



MODEL	SOC 4210BL SOC 4211GD	SOC 3313PW	SOC 3311BK SOC 3312WH
Programs	4	5	5
Speeds	-	-	-
Oscillations per minute	40,000	48,000	48,000
Quadpacer	yes	yes	yes
Battery life	45 days	45 days	45 days
UV sterilizer	yes	yes	yes
Case with a USB port	yes	yes	yes
Case	yes	yes	yes
IP code	IPX7	IPX7	IPX7
Glass Cup with Inductive Charger	yes	-	-



ELECTRIC SONIC TOOTHBRUSHES

MODEL	SOC 2200SL SOC 2201RS SOC 2202TQ	SOC 1101RD SOC 1100SL SOC 1102TQ	SOC 0910BL SOC 0911RS SOC 0912GR
Programs	5	1	1
Speeds	-	10	2
Oscillations per minute	45,000	41,000	26,000
Quadpacer	yes	yes	yes
Battery life	45 days	45 days	15 days
UV sterilizer	-	-	-
Case with a USB port	yes	-	-
Case	yes	yes	-
IP code	IPX7	IPX7	IPX7

ORAL IRRIGATORS



MODEL	SOI 3312WH	SOI 2200SL SOI 2201RS SOI 2202TQ	SOI 1100SL SOI 1101RD SOI 1102TQ
Number of operation modes	3	3	3
Auto timer	quad pace 4*30sec	quad pace 4*30sec	quad pace 4*30sec
Water tank capacity	600 ml	600 ml	150 ml
Number of nozzles	4	4	5
Number of sets in packaging	2	2	2
360° rotation of the head	yes	yes	yes
Mouth wash compatable	yes	yes	yes
Travel case	no	no	yes
Special case for nozzles	yes	yes	no

PERSONAL SCALES



MODEL	SBS 8802BL	SBS 8000BK	SBS 6025WH SBS 6026BK	SBS 5050BK SBS 5051WH	SBS 2302SN SBS 2300BK SBS 2301WH	SBS 113SL
Weight capacity	180 kg	180 kg	180 kg	150 kg	150 kg	150 kg
Increments of measurement	100 g	100 g	100 g	100 g	100 g	100 g
Ultra-slim design (height in mm)	22 mm	22 mm	23 mm	20 mm	21 mm	24 mm
Platform	glass	glass	glass	glass	glass	glass
Tempered safety glass (height in mm)	6 mm	6 mm	6 mm	6 mm	5 mm	6 mm
LCD display	Large White LED Display	74 × 35.6 mm	62 × 62 mm	74 × 28.5 mm	74 × 28.5 mm	74 × 28.5 mm
Available weight units	kg/lb	kg/lb	kg/lb	kg/lb	kg/lb	kg/lb
Bluetooth	yes	yes	-	-	-	-
Measures body fat (%)	yes	yes	yes	yes	-	-
Measures body water (%)	yes	yes	yes	yes	-	-
Measures muscle mass (%)	yes	yes	yes	-	-	-
Measures bone mass (kg)	yes	yes	yes	-	-	-
Auto-On technology	yes	yes	yes	yes	yes	yes
Memory for up to x users	multiple user account	multiple user account	12	12	12	12
Batteries	4× 1.5V AAA (included)	2× 1.5V AAA (included)	3× 1.5 V AAA (included)	1× CR2032 (included)	1× CR2032 (included)	1× CR2032 (included)

SMART KITCHEN SCALE



MODEL	SKS 707x
Color	
Weight capacity	5 kg
Available weight units	g/kg/oz/bl:oz
Choice of weight units	yes
Platform	glass
LCD display	yes
SENCOR FOOD app	linked to the Dine4Fit app with 400,000 food items in the database
Calories, sodium etc.	yes
Overload indicator	yes
Low battery indicator	yes
4 sensors for more precise measurement	yes
Auto-off when idle	yes
Liquid volume measurement	yes

BLOOD PRESSURE MONITOR



MODEL	SBP 6800WH	SBD 1470WH	SBP 690
Measuring	blood pressure, heart pulse rate	blood pressure, heart pulse rate	blood pressure, heart pulse rate
Cardiac arrhythmia warning indicator	yes	yes	yes
LCD display	65 × 50 mm	31 × 44 mm	61 × 93 mm
Pressure cuff diameter	22–42 cm	13.5–19.5 cm	22–42 cm
Memory	60 measurements (for 1 user)	60 measurements (for 1 user)	60 measurements (for 1 user)
Batteries	4× AAA batteries	4× AAA batteries	4× AA batteries

www.sencor.com